




## NOVA RIDE PF30-24 Bottom Bracket Installation Guide

[Home](#) » [NOVA RIDE](#) » NOVA RIDE PF30-24 Bottom Bracket Installation Guide 

### NOVA RIDE PF30-24 Bottom Bracket Installation Guide



#### Contents

- [1 TOOLS NEEDED](#)
- [2 INSTALATION RAPIDE](#)
- [3 WARRANTY TERMS](#)
- [4 CONTACTS](#)
- [5 Documents / Resources](#)
- [6 Related Posts](#)

### TOOLS NEEDED

- Dégraissant



- Lithium grease



- Crankset remover



- Torque wrench



- Mounting press

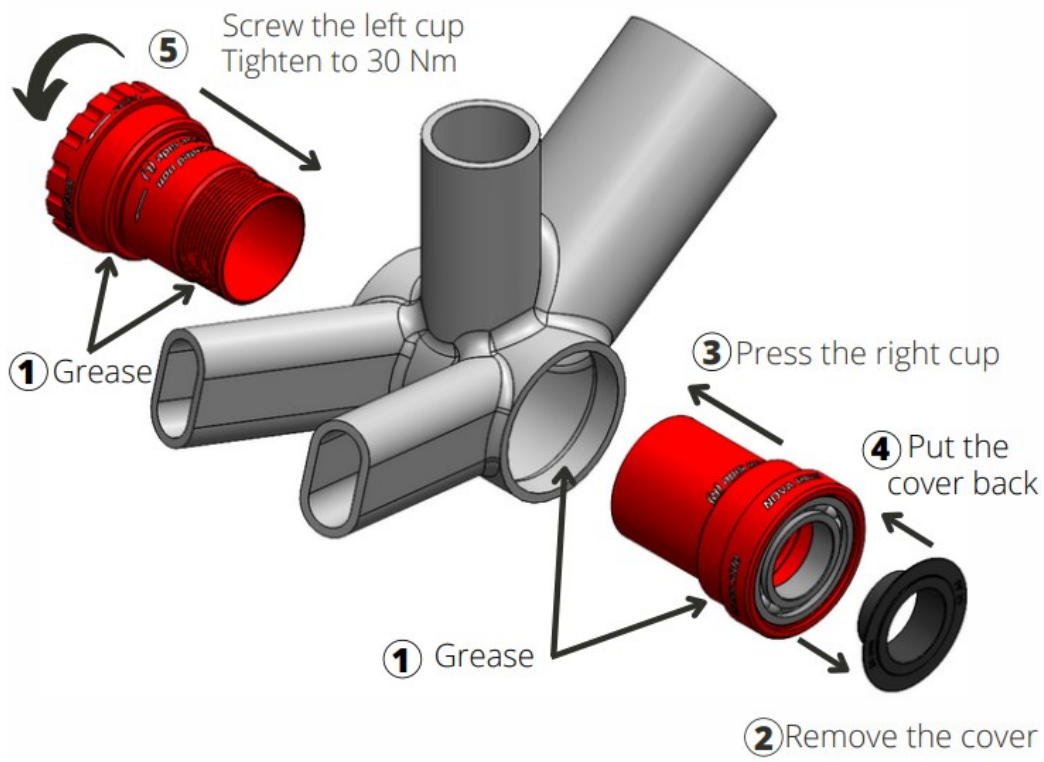


Scan this QR Code to access all our installation videos and social media.



**INSTALLATION RAPIDE**

**Non drive Side (Left)**



#### Drive Side (Right)

#### Clean and degrease the frame



#### Grease the frame and the bottom bracket thread



#### Take the right cup from the bottom bracket and remove the cover



By using a press, press the right cup (press side) into the frame, on drive side.



Put the cover back on the right cup.



Screw the left cup (thread side), on the non drive side, clockwise first by hand and then using the Nova Ride key





You can also screw it with the socket and the torque wrench

Last step : Reinstall your crankset and your chain

## **WARRANTY TERMS**

Nova Ride warrants all products to be free from defects in materials and

workmanship. The warranty is effective from the original date of purchase. The warranty covers all Nova Ride products. It is non-transferable and valid to the original purchaser of the product only.

CNC Alloy cups : Lifetime warranty.

Bearings : 4 years warranty.

Any Nova Ride product found to be defective in materials and/or workmanship will be repaired or replaced at the discretion of Nova Ride. It is the sole responsibility of the product's user to inspect and examine the product on a regular basis to determine the need for correct maintenance or replacement.

Not covered under the warranty program : Products determined to be tampered with, modified or neglected, products that have been misused, products in lack of maintenance, products that are subject to normal wear and tear, products affected by a crash or sudden obscure impact, products damaged due to improper installation/reinstallation, products used for any purpose other than the intended use and second hand purchased products.

## **CONTACTS**

Email for After Sales Service – pour SAV (Service après-vente)

[sav@novatoride.com](mailto:sav@novatoride.com)

Email for Products info – pour information produits

[info@novatoride.com](mailto:info@novatoride.com)

### **Instagram**

nova2ride

### **Facebook**

novaridecomponents

### **YouTube**

NOVA RIDE

### **LinkedIn**

NOVA RIDE



### **Strava**

Nova Ride Cycling Club



# NOVA RIDE

## Documents / Resources

 NOVA RIDE — INSTALLATION MANUAL MANUEL DE MONTAGE  BOTTOM BRACKET PF30 - 24 / 29 / 30 mm	<a href="#">NOVA RIDE PF30-24 Bottom Bracket</a> [pdf] Installation Guide PF30-24 Bottom Bracket, PF30-24, Bottom Bracket, Bracket
--	---