



nous L6Z Smart ZigBee Switch Instruction Manual

[Home](#) » [NOUS](#) » nous L6Z Smart ZigBee Switch Instruction Manual 

Contents

- [1 nous L6Z Smart ZigBee Switch](#)
- [2 SCANNER](#)
- [3 Documents / Resources](#)
 - [3.1 References](#)

nous

nous L6Z Smart ZigBee Switch



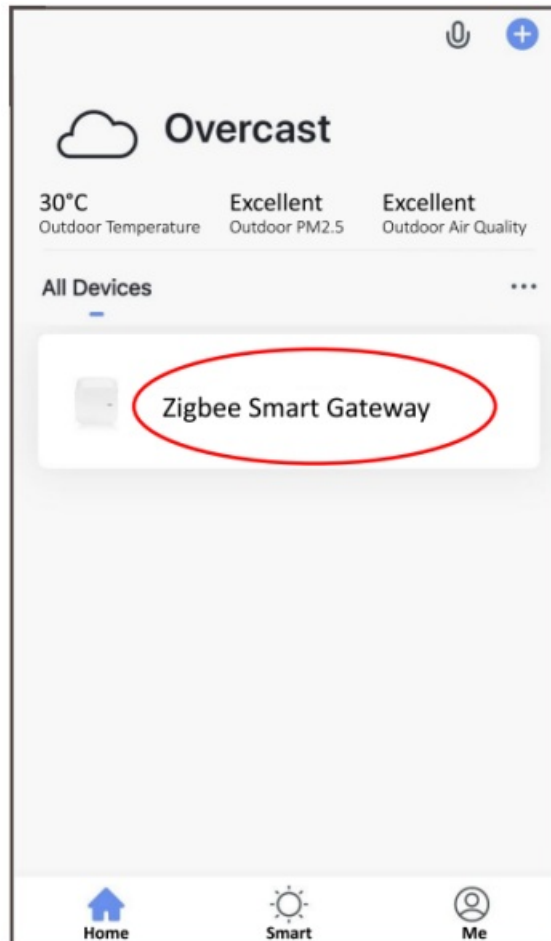
Checklist before using the device:

- Your smartphone or tablet is connected to WiFi with the internet. You have the correct WiFi PWD

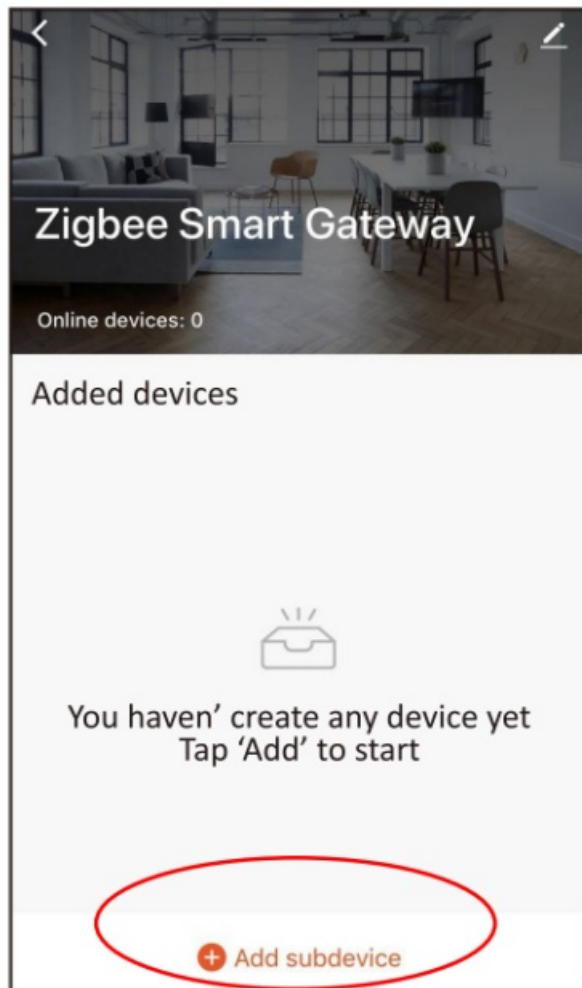
- Your smartphone or tablet must have access to the App Store Google Play. Your router is MAC-open

User Guide

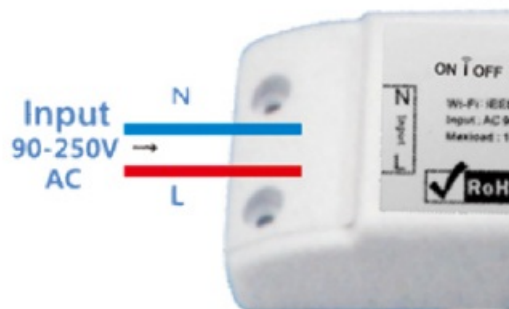
- Start with the “Nous Smart Home” APP.
- Register a Nous Smart Home If you have a Nous Smart Home just log in.
 - Open the Nous Smart Home app, on the smart gateway homepage (your ZigBee Hub has to be connected to the app already),
 - **Click:** Zigbee Smart Gateway



- Press + and Add device



- **Power on:** ON/OFF operating principle: The connected appliances work/stop through live wire power on/off.



Appliance wiring instruction



Celling lamp wiring instruction

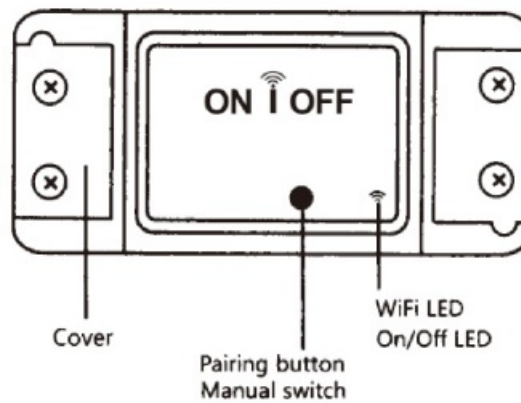


One wire wiring instruction

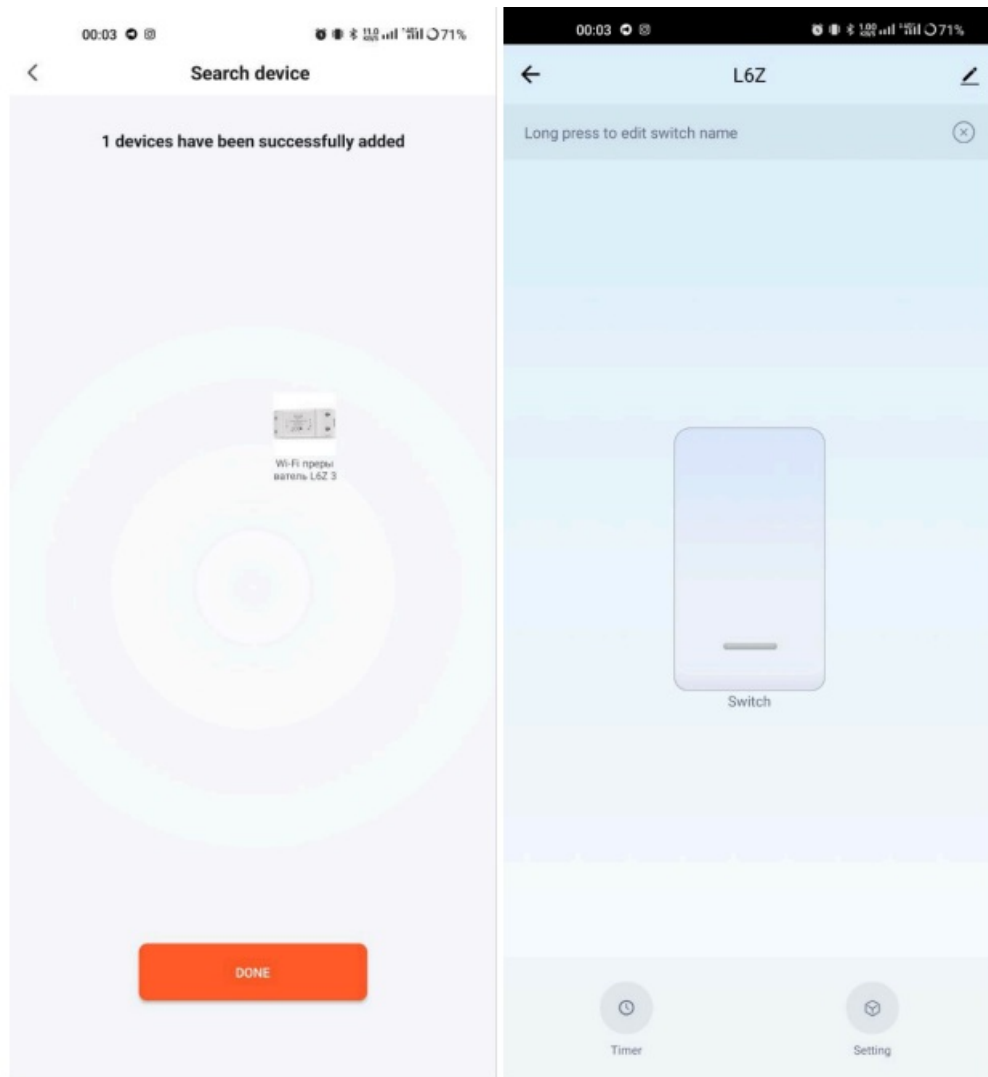


Note: The ZigBee Switch must be powered up by N and L wires

- Press the reset button for 5 seconds, till the blue LED blink, then click “LED already blink” on the app.

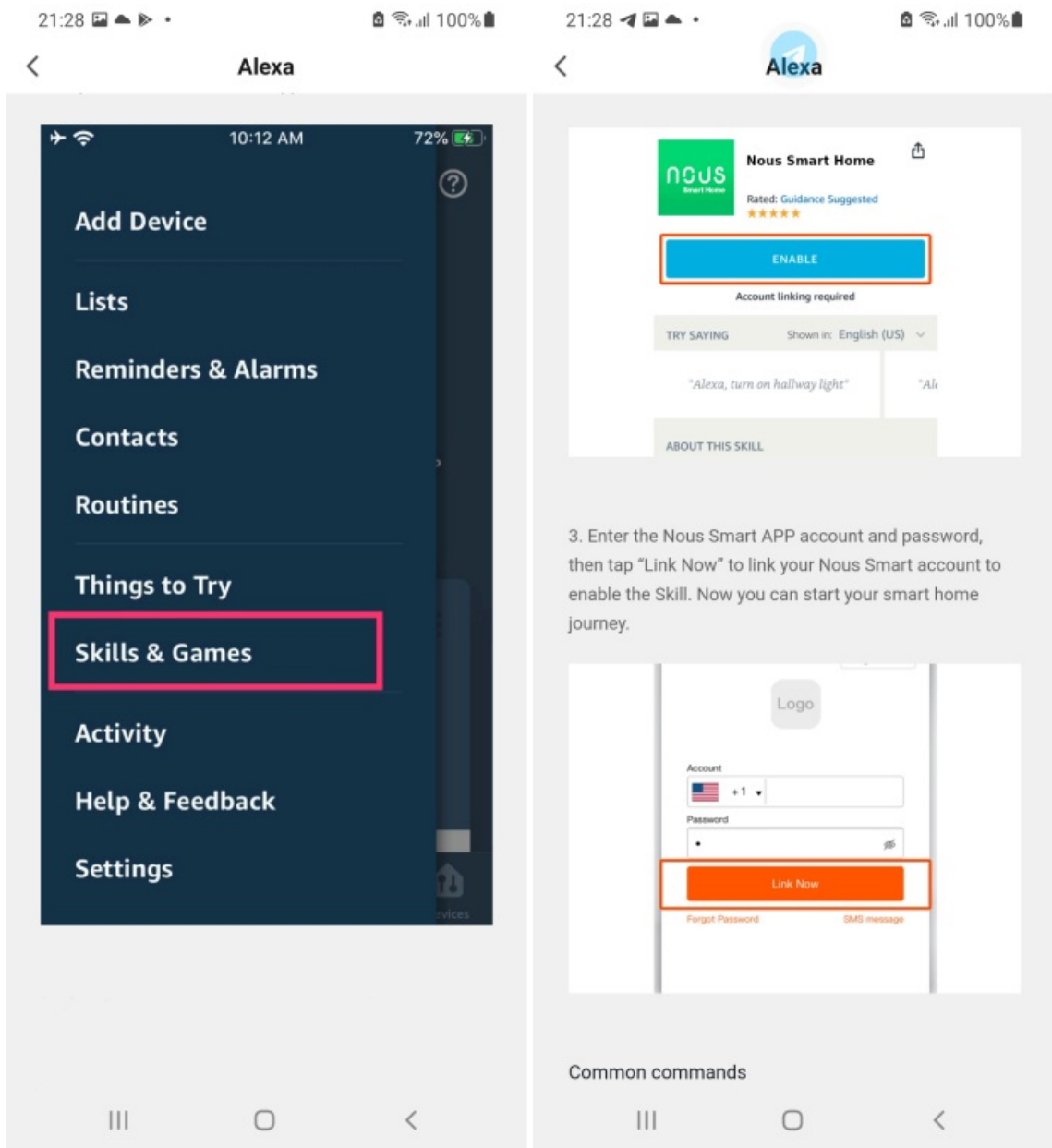


- Waiting for a few seconds, you can see that this device is shown and you may rename it.



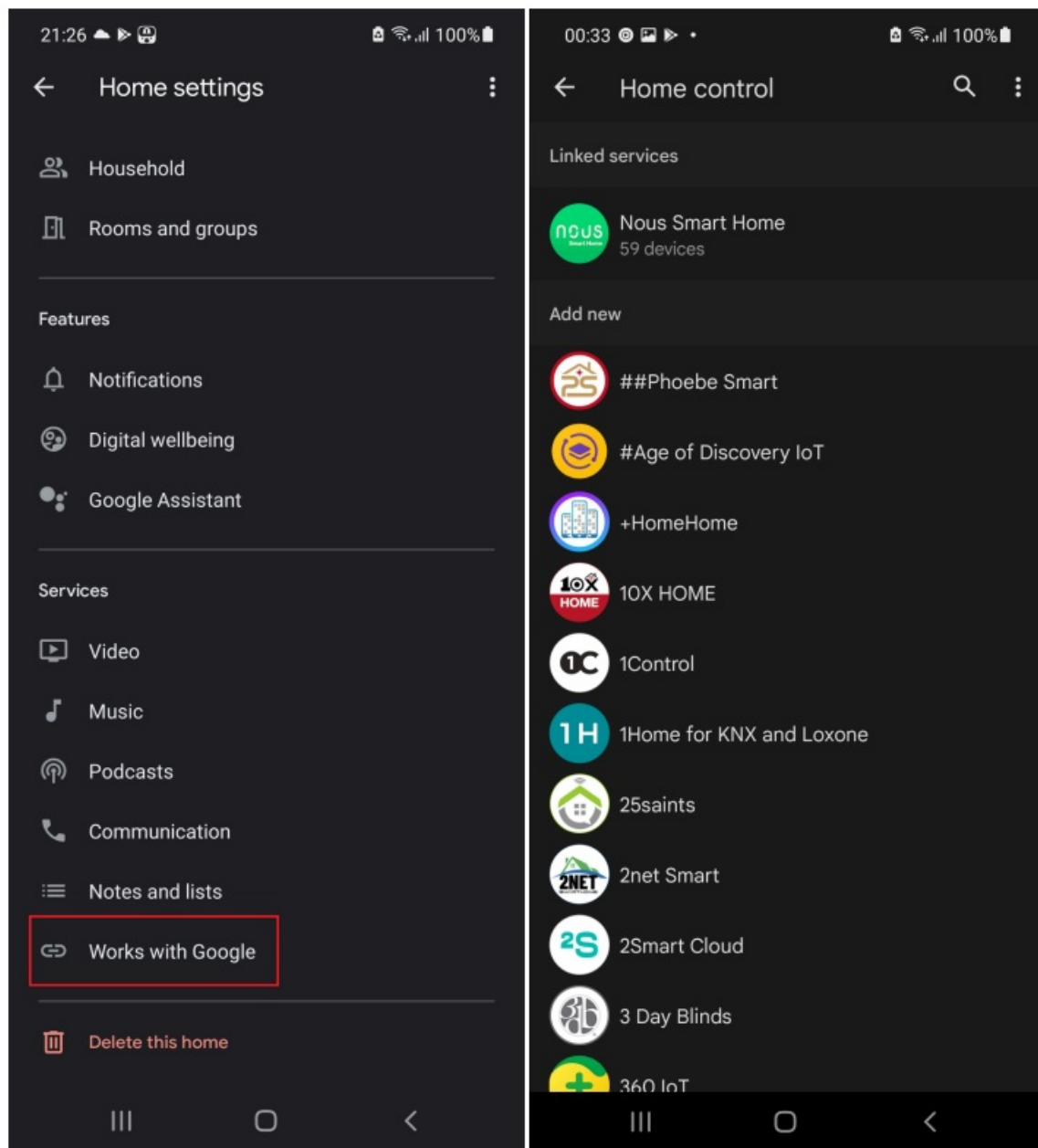
How to connect your device with Alexa

1. You have to have the Alexa app on your smartphone
2. Go to settings and press "Skill and Games"
3. Search for the Nous Smart Home skill
4. Enable it
5. Link your Nous account with Alexa
6. Ask Alexa to discover new devices



How to connect your device with Google Home

1. You have to have Google Home app on your smartphone
2. Go to the home settings and press "works with google"
3. Search for the Nous Smart Home
4. Link the account with the Google Home
5. All devices from Nous Smart app will appear in Google Home after synchronization



Troubleshooting

Q1: How to set the indicator light as rapid flashing?

- Power on the device. Power on after 10 and then power on.
- Hold the reset button for 5s.
- Confirm indicator light is now rapidly flashing

Q2: How to set the indicator light as slow flashing?

- Power on the device. Power on after 10 and then power on.
- Hold the reset button for 5s
- Confirm indicator light is now rapidly flashing.
- Hold the reset button for 5s until the indicator light is slowly flashing.

The newly added device needs 1 minute to connect to networks and the internet if it stays offline for a long time please judge the problem by the network's LED status. Networks LED quickly blinks one time every second;


This translation may be inaccurate because it was made with the Google Translate service

SCANNER

You will need Nous Smart Home App. Scan the QR code or download it from direc and you will need Nous E1 or other Tuya cmpatible ZigBee Gateway/Hub



Documents / Resources

	<p>nous L6Z Smart ZigBee Switch [pdf] Instruction Manual L6Z Smart ZigBee Switch, L6Z, Smart ZigBee Switch, ZigBee Switch, Switch</p>
---	---

References

- [User Manual](#)