



Nouis L5 WiFi Smart Remote IR Controller Instruction Manual

[Home](#) » [NOUS](#) » Nouis L5 WiFi Smart Remote IR Controller Instruction Manual 

Contents

- [1 Nouis L5 WiFi Smart Remote IR Controller](#)
- [2 Product Information](#)
- [3 Specifications](#)
- [4 Product Introduction](#)
- [5 Documents / Resources](#)
 - [5.1 References](#)

noUS

Nouis L5 WiFi Smart Remote IR Controller



Product Information

The WiFi Smart Remote IR Controller L5 allows users to create smart application scenes for ordinary appliances in their homes by adding a smart remote controller. It can control various devices such as air conditioning units, TVs, and set-top boxes through the Nous Smart Home App.

Specifications

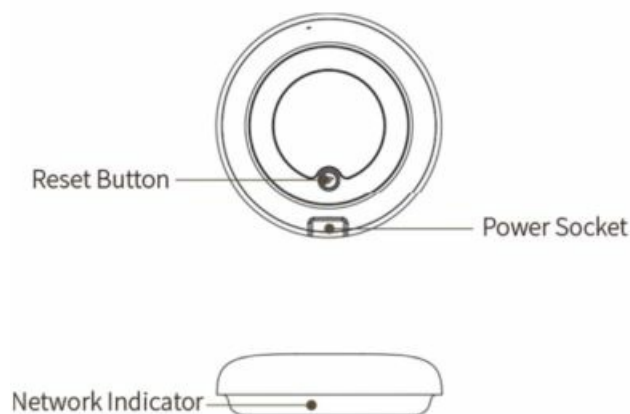
- **Model:** L5
- **Connectivity:** WiFi (2.4GHz band)
- **Compatibility:** Infrared remote-controlled devices

You will need the Nous Smart Home App. Scan the QR code or download it from direct link



Product Introduction

Users can make the smart application scene of ordinary appliances in home by adding a smart remote controller.



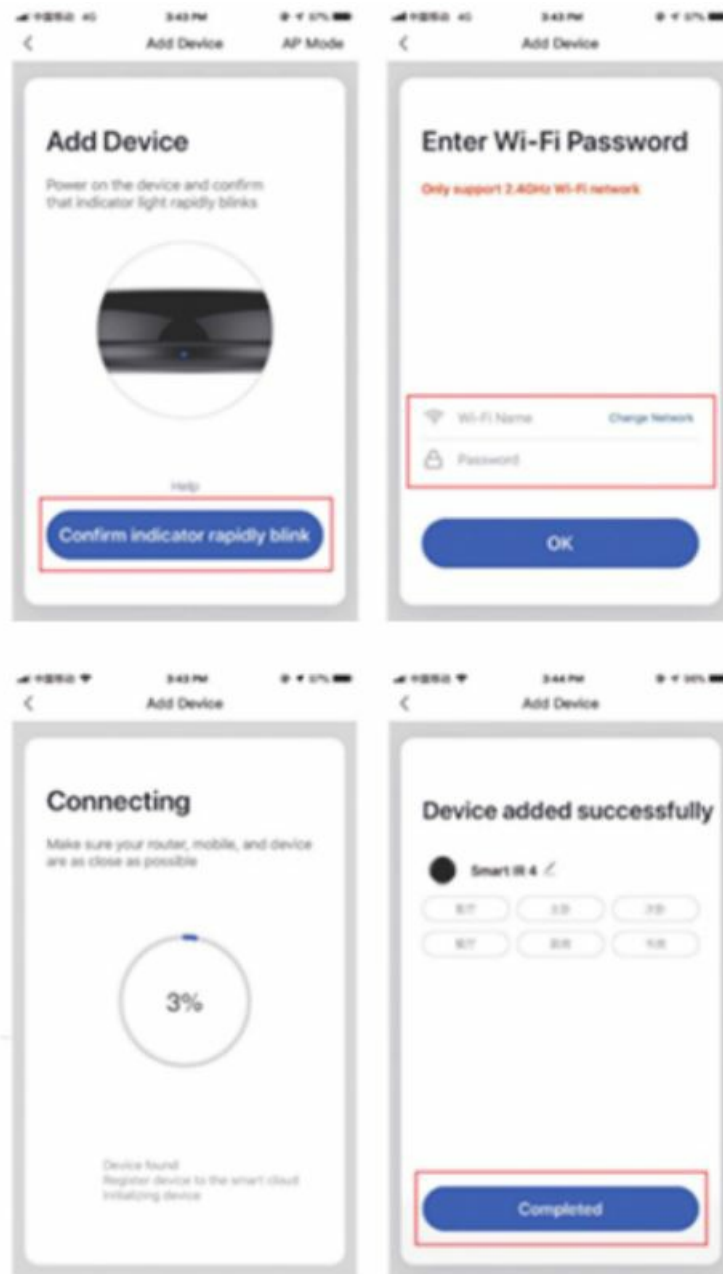
Using Device

Connect the device to the power source while ensuring that the phone is connected to the 2.4GHz band WiFi.

Add the device

- Open the "Nous Smart Home" app and click on "Add Device" or "+";

- Select “Remote Controller” in the “Device List” and add the device
- Network Reset (Default mode)
- Press and hold the reset button for more than 5s until the network indicator flashes. Follow the APP instructions to add the device;
- Go to the “Add Device” page and click the “Confirm indicator is flashing” button; enter your WI-FI password;
- Connect the device (the device cannot be interrupted when connected), and click the “End” button after the device is successfully added;
- The device can be found in the My Home list once the device has been successfully added.

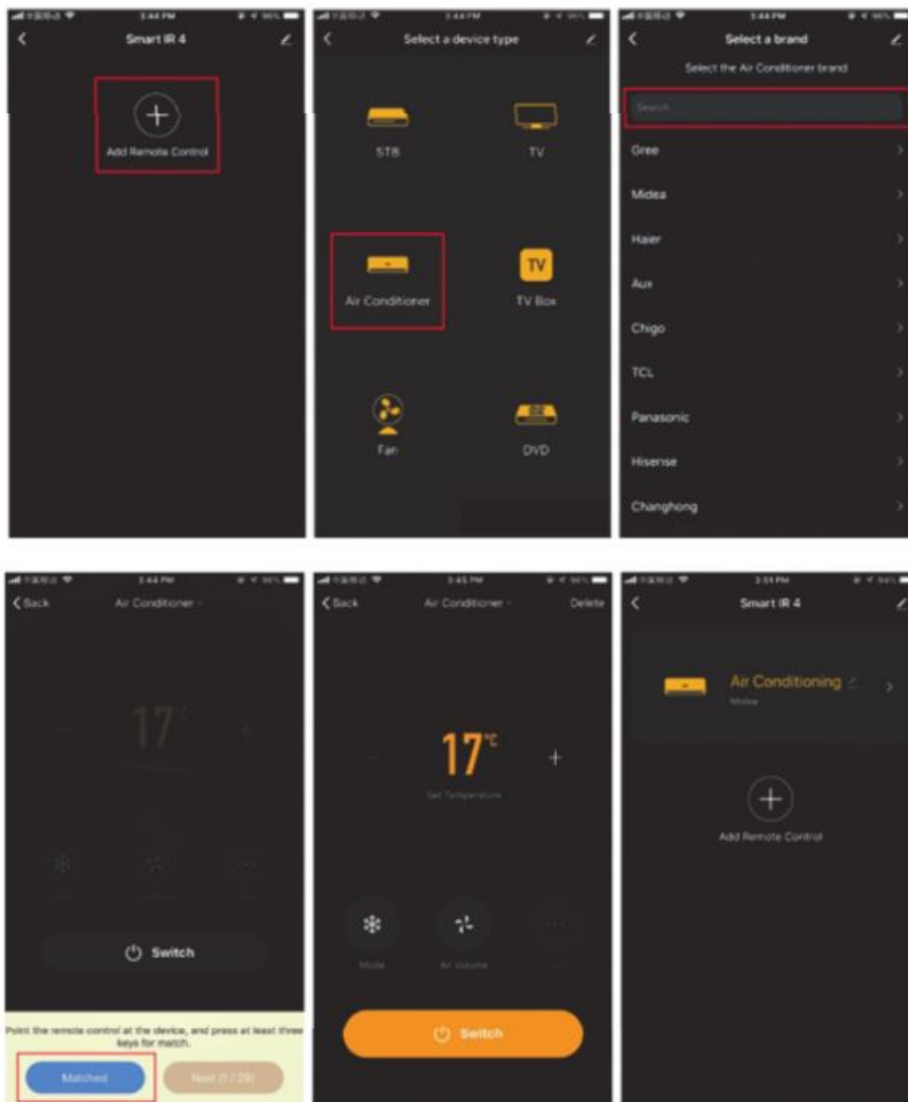


Add a fixed remote control

Add a fixed remote control

Adding fixed-class electrical remote control such as airconditioning remote control, TV remote control, set-top box remote control, etc, based on the existing classification, this method of adding remote control is simple and fast, but limited by the code database data.

It can not guarantee that the electrical appliance can be 100% controlled by the infrared remote control. The appliance may not be able to support control.



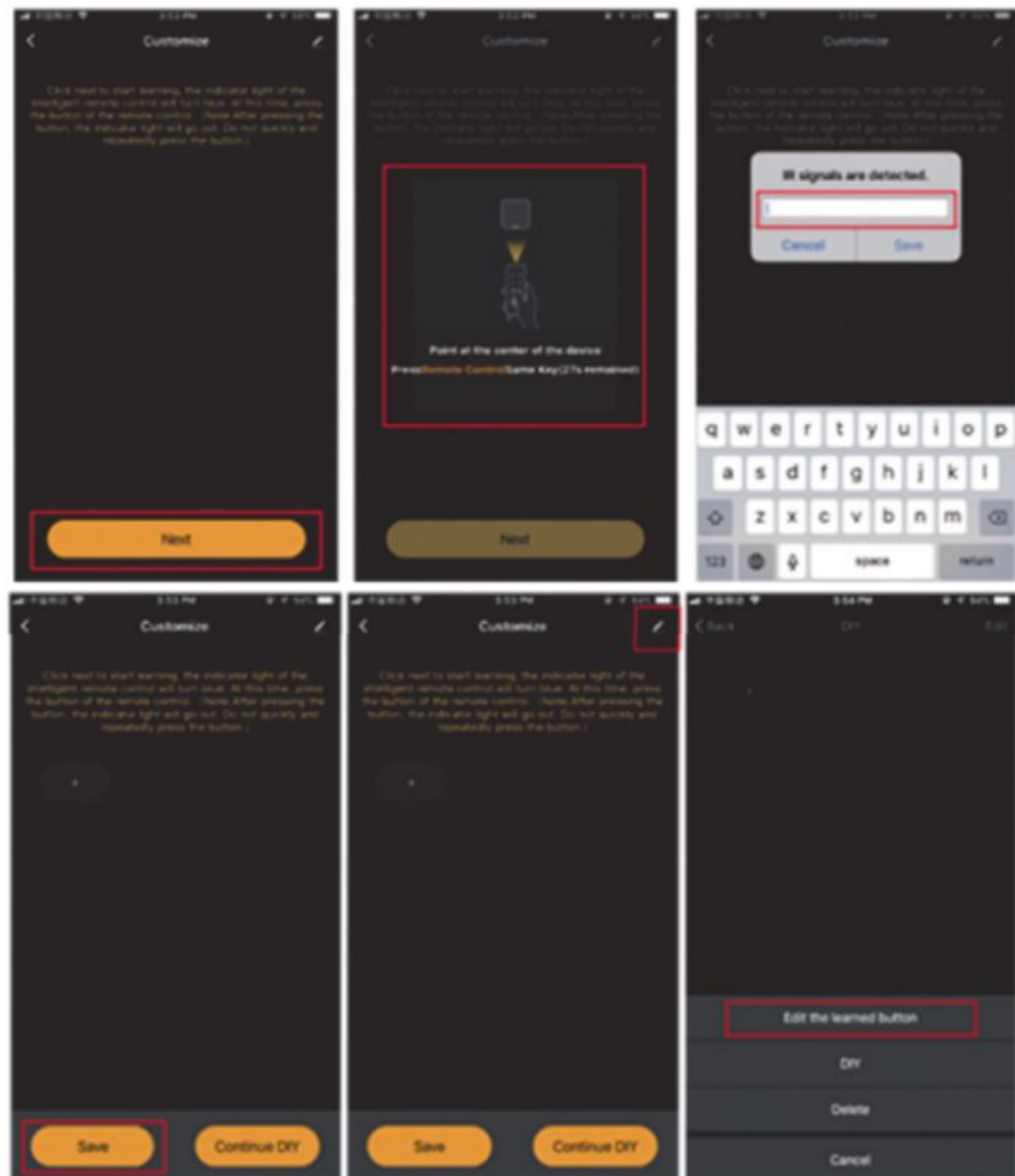
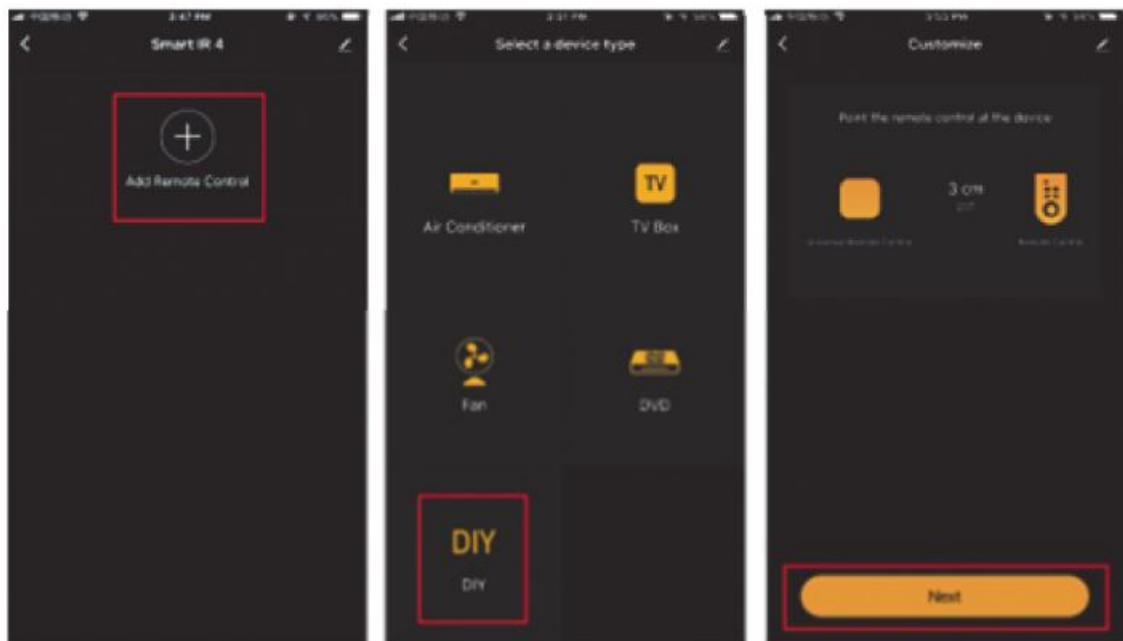
Network reset (Compatibility mode)

- Network reset (Compatibility mode)
- Press and hold the reset button for more than 5s, the indicator light flashes blue and enter the flashing state;
- press and hold the reset button for more than 5s to enter the slow flash mode, and follow the APP instructions to add equipment;
- Go to the “Add Device” page and click the “Confirm indicator is flashing” button; enter your WI-FI password;
- Connect the device (the device cannot be interrupted when connected), and click “End” button after the device is successfully added;
- The device can be found in the My Home list once the device has been successfully added.


DIY Function

If you can't find the remote control for controlling the appliance through the above two methods, you can use the learning function (DIY) to get the smart remote control ability to control the appliance.

- When the infrared is emitted, the indicator light flashes to indicate normal operation.
- The infrared launch tube is in the area above the indicator light. Please point the device remote control 3cm away at the indicator area when learning (DIY).



Documents / Resources

	<p>Nous L5 WiFi Smart Remote IR Controller [pdf] Instruction Manual</p> <p>L5 WiFi Smart Remote IR Controller, L5, WiFi Smart Remote IR Controller, Smart Remote IR Controller, Remote IR Controller, IR Controller, Controller</p>
---	---

References

- [🌐 Nous Smart](#)
- [User Manual](#)