



nous L13Z Smart ZigBee Switch Module Instruction Manual

[Home](#) » [NOUS](#) » nous L13Z Smart ZigBee Switch Module Instruction Manual 

Contents

- [1 nous L13Z Smart ZigBee Switch Module](#)
- [2 Checklist before using the device](#)
- [3 How to connect your device with Alexa](#)
- [4 How to connect your device with Google Home](#)
- [5 Troubleshooting](#)
- [6 Documents / Resources](#)
 - [6.1 References](#)



nous L13Z Smart ZigBee Switch Module



You will need Nous Smart Home App. Scan the QR code or download it from direct link



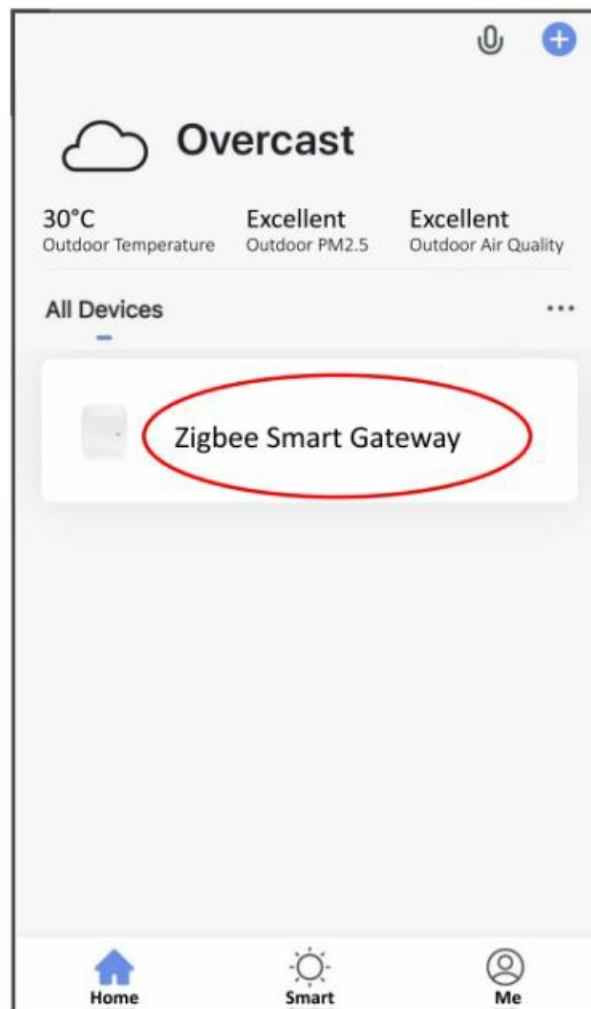
- and you will need Nous E1 or other Tuya-compatible ZigBee Gateway/Hub

Checklist before using the device

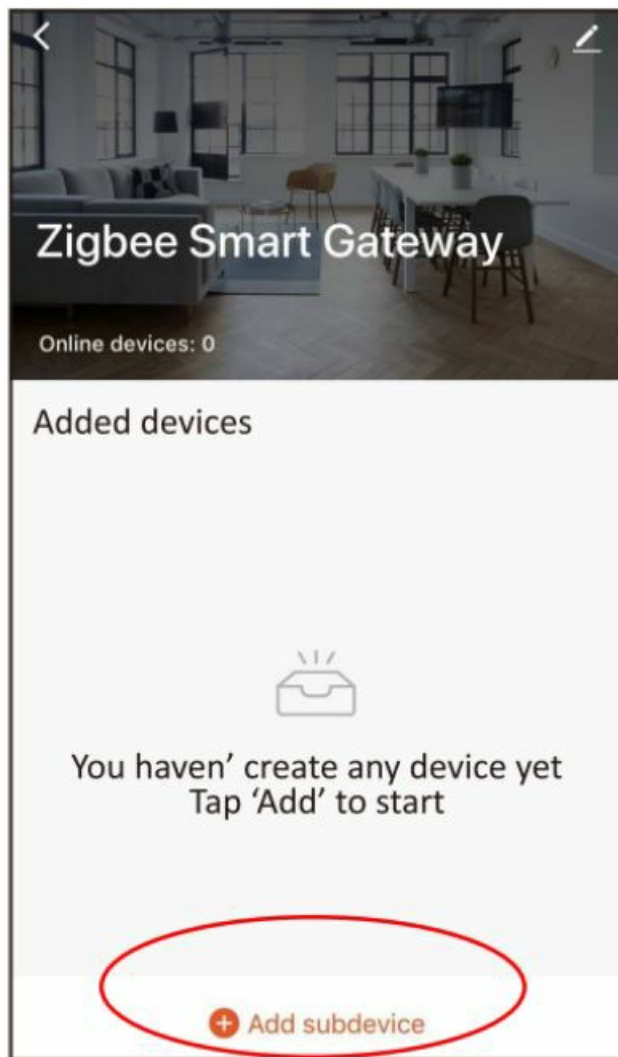
- Your smartphone or tablet is connected to WiFi with the internet.
- You have the correct WiFi PWD
- Your smartphone or tablet must have access to the App Store and Google Play.
- Your router is MAC-open

User Guide

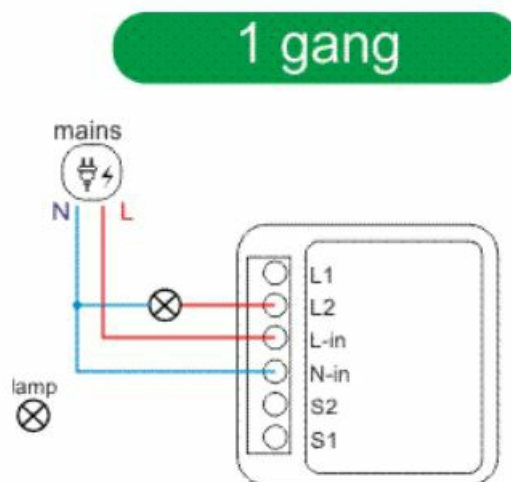
- Start with the "Nous Smart Home" APP.
- Register a Nous Smart Home If you have a Nous Smart Home just log in. Open the Nous Smart Home app, on the smart gateway homepage (your ZigBee Hub has to be connected to the app already), Click: Zigbee Smart Gateway



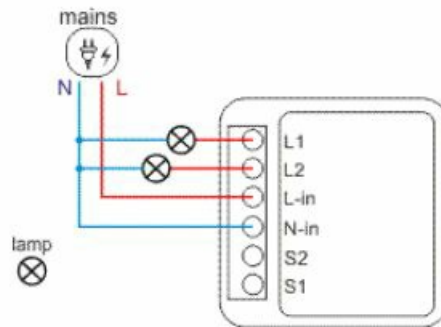
- Press + and Add device



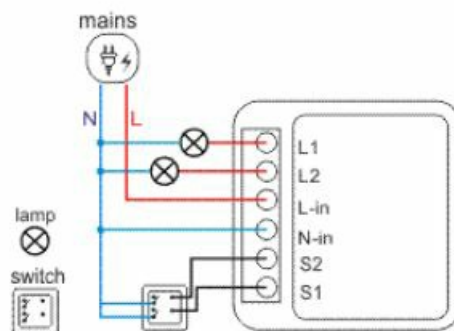
- Power on ON/OFF operating principle: The connected appliances work/stop through live wire power on/off.



2 gang

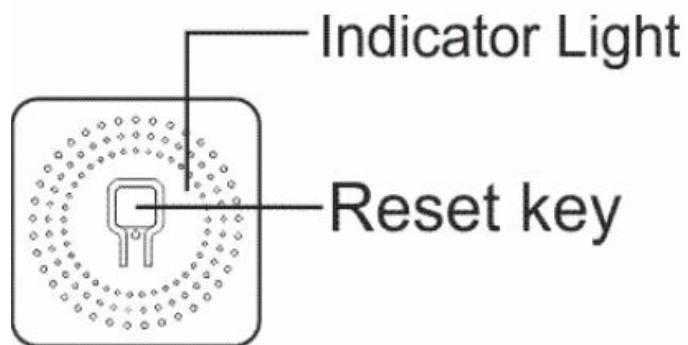


2 gang 1 way

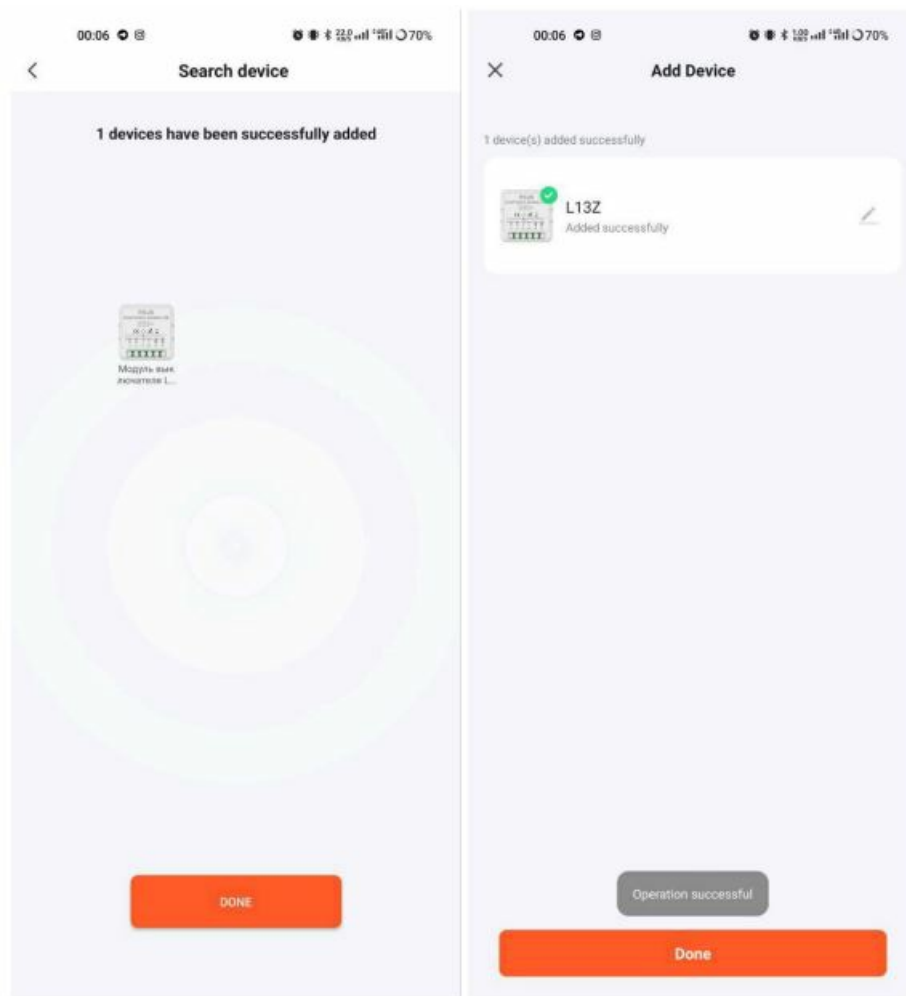


Note: The ZigBee Switch must be powered up by N and L wires

- Press the reset button for 5 seconds, till the blue LED blink, then click “LED already blink” on the app.

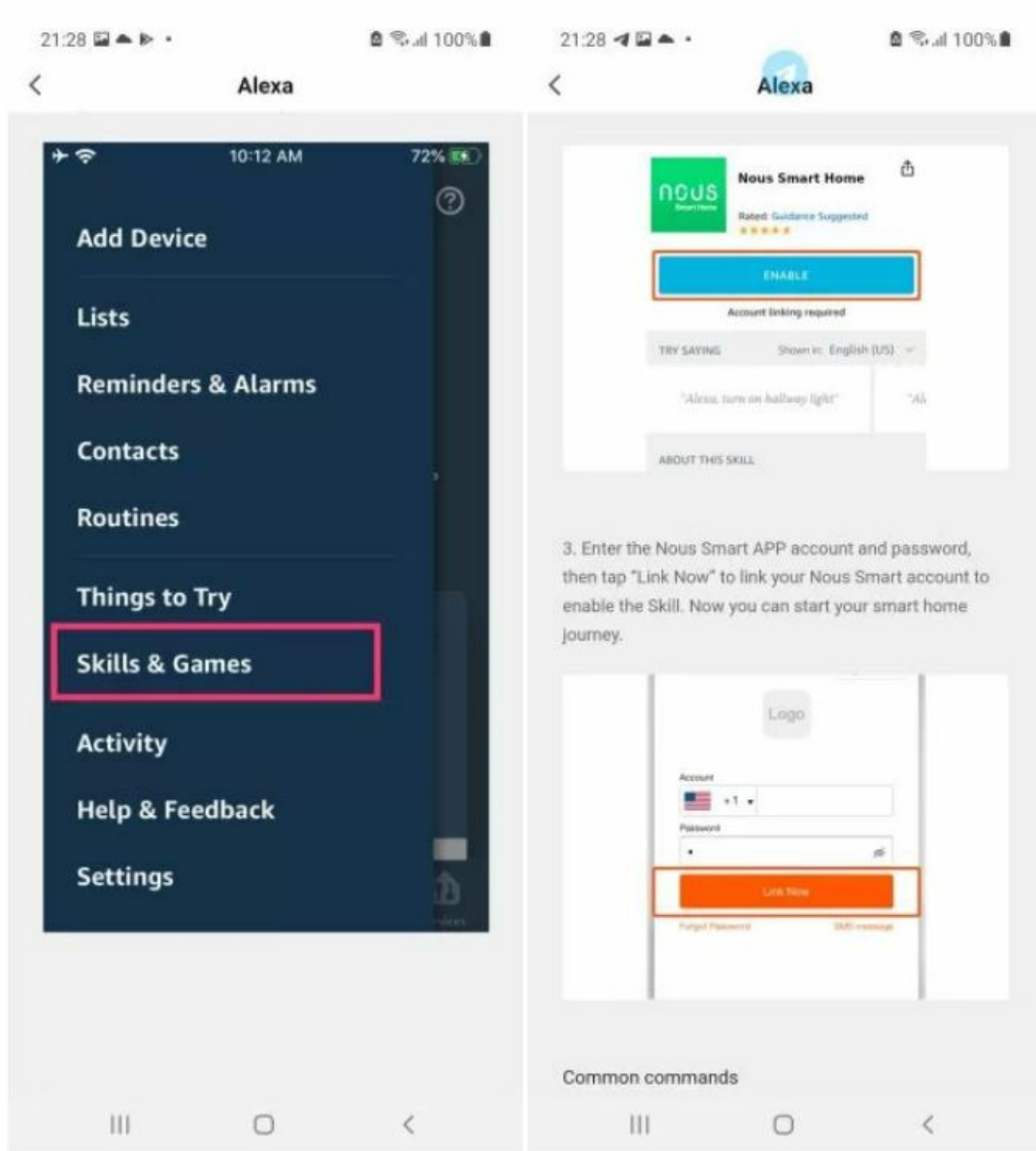


- Waiting for a few seconds, you can see that this device is shown and you may rename it.



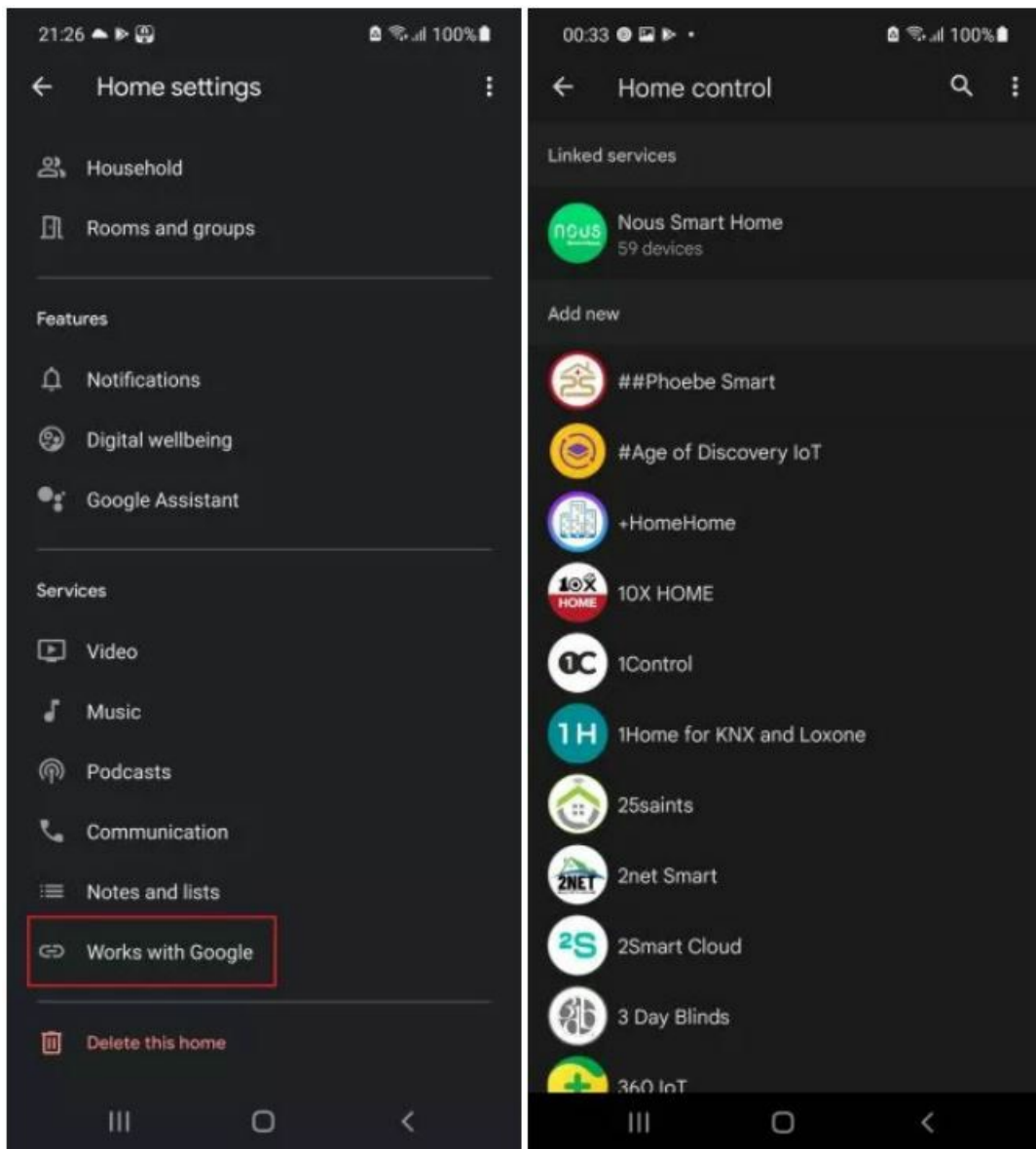
How to connect your device with Alexa

1. You have to have the Alexa app on your smartphone
2. Go to settings and press "Skill and Games"
3. Search for the Nous Smart Home skill
4. Enable it
5. Link you Nous account with Alexa
6. Ask Alexa to discover new devices



How to connect your device with Google Home

1. You have to have the Google Home app on your smartphone
2. Go to the home settings and press "works with Google"
3. Search for the Nous Smart Home
4. Link the account with the Google Home
5. All devices from the Nous Smart app will appear in Google Home after synchronization



Troubleshooting

Q1: How to set the indicator light as rapid flashing?

- Power on the device. Power off after 10s and then power on.
- Hold the reset button for 5s.
- Confirm indicator light is now rapidly flashing


Q2: How to set the indicator light as slow flashing?

- Power on the device. Power off after 10s and then power on.
- Hold the reset button for 5s
- Confirm indicator light is now rapidly flashing.
- Hold the reset button for 5s until the indicator light is slowly flashing.

The newly added device needs 1 minute to connect to networks and the internet if it stays offline for a long time please judge the problem by the network's LED status. Networks LED quickly blinks one time every second;

- This translation may be inaccurate because it was made with Google Translate service

Documents / Resources

	<p>nouis L13Z Smart ZigBee Switch Module [pdf] Instruction Manual L13Z, L13Z Smart ZigBee Switch Module, Smart ZigBee Switch Module, ZigBee Switch Module , Switch Module, Module</p>
---	---

References

- [🌐 Nouis Smart](#)
- [User Manual](#)