

nous L12Z Smart ZigBee Curtain Module Instruction Manual

[Home](#) » [NOUS](#) » nous L12Z Smart ZigBee Curtain Module Instruction Manual 



INSTRUCTION MANUAL Smart ZigBee Curtain Module L12Z

Contents

- [1 L12Z Smart ZigBee Curtain Module](#)
- [2 Checklist before using the device:](#)
- [3 User Guide](#)
- [4 How to connect your device with Alexa](#)
- [5 How to connect your device with Google Home](#)
- [6 Troubleshooting](#)
- [7 Documents / Resources](#)
 - [7.1 References](#)

L12Z Smart ZigBee Curtain Module

You will need Nous Smart Home App. Scan the QR code or download it from [direct link](#) and you will need Nous E1 or other Tuya compatible ZigBee Gateway/Hub



<https://a.smart321.com/noussmart>

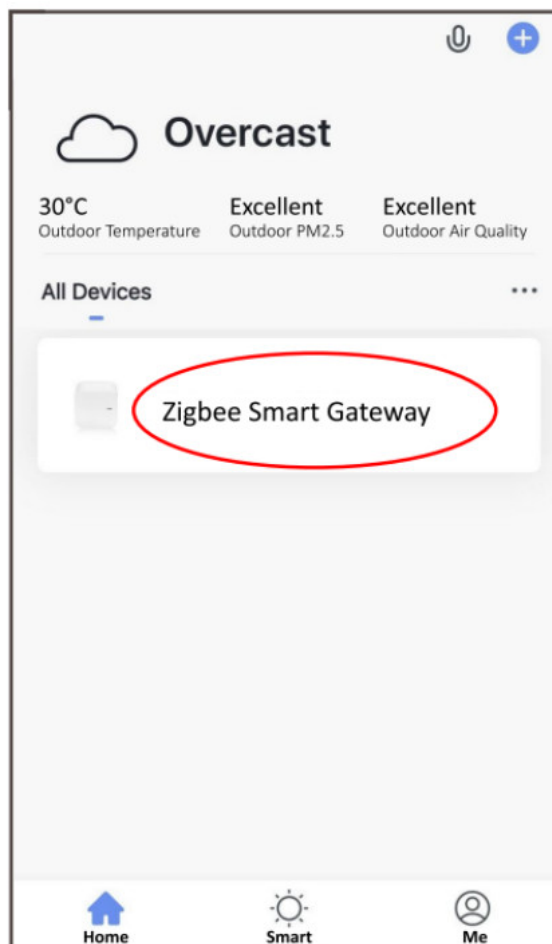
Checklist before using the device:

- Your smart phone or tablet has connected to a WiFi with internet.
- You have the correct WiFi PWD
- Your smart phone or tablet must have access to App Store Google Play.
- Your router is MAC-open

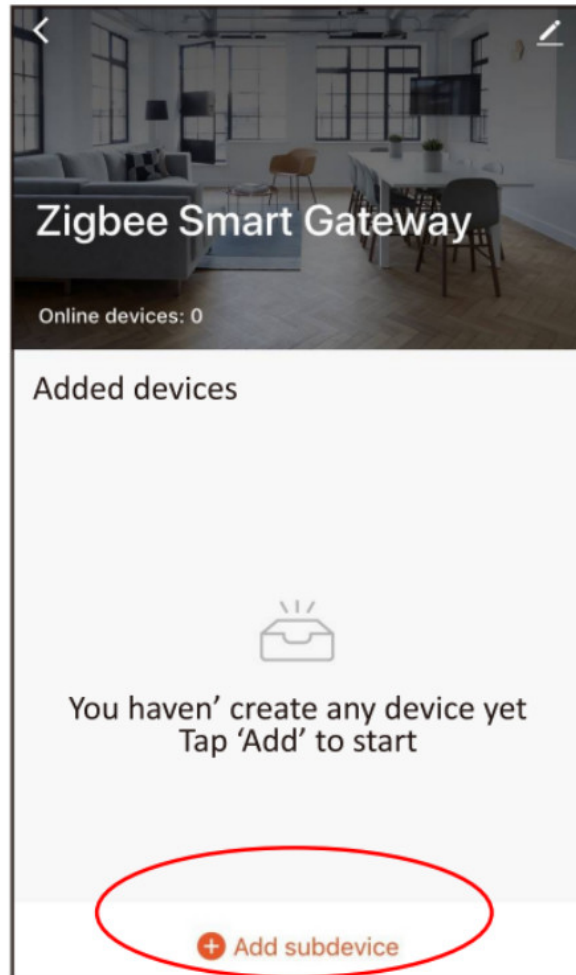
User Guide

- Start with “Nous Smart Home” APP.
- Register an Nous Smart Home If you have Nous Smart Home just log in.
- Open Nous Smart Home app, on smart gateway homepage (your ZigBee Hub has to be connected to the app already),

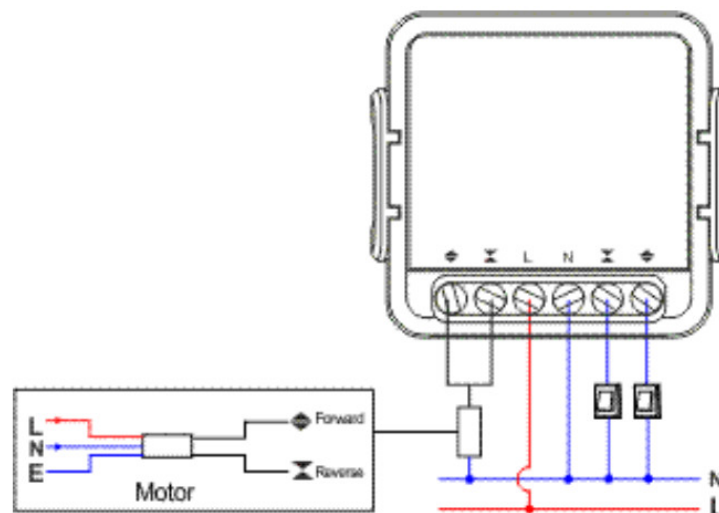
Click: Zigbee Smart Gatewa



- Press + and Add device

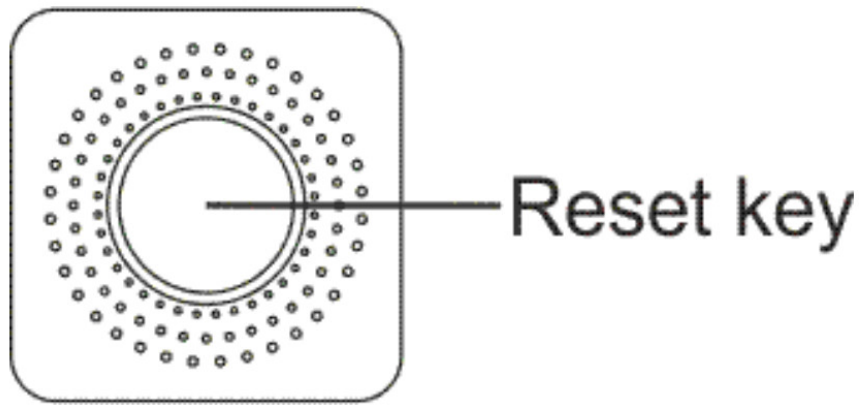


- Power on
- ON/OFF operating principle: The connected appliances work/stop through live wire power on/off.

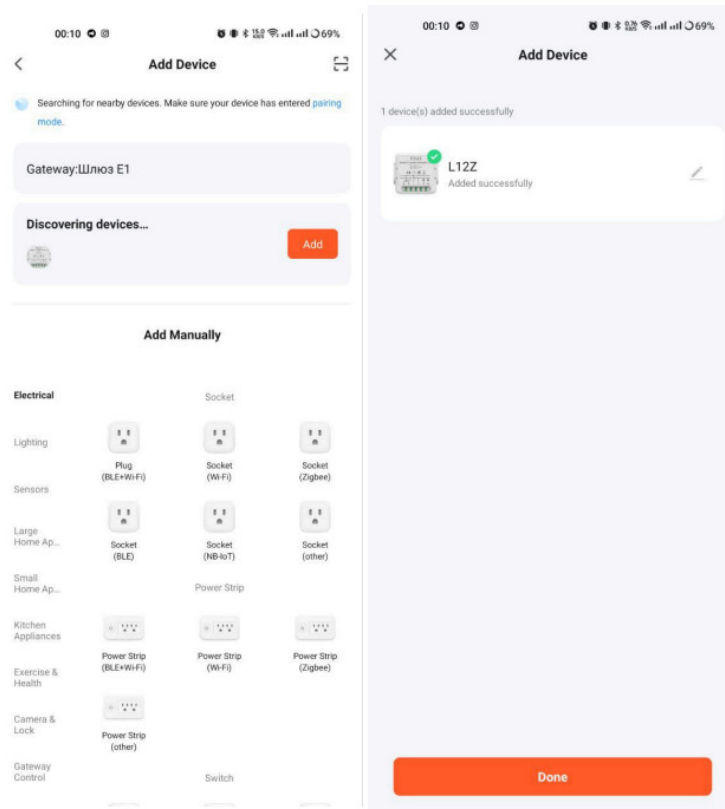


Note: The ZigBee Switch must be powered up by N and L wires

- Press the reset button for 5 seconds, till the blue LED blink, then click "LED already blink" on the app

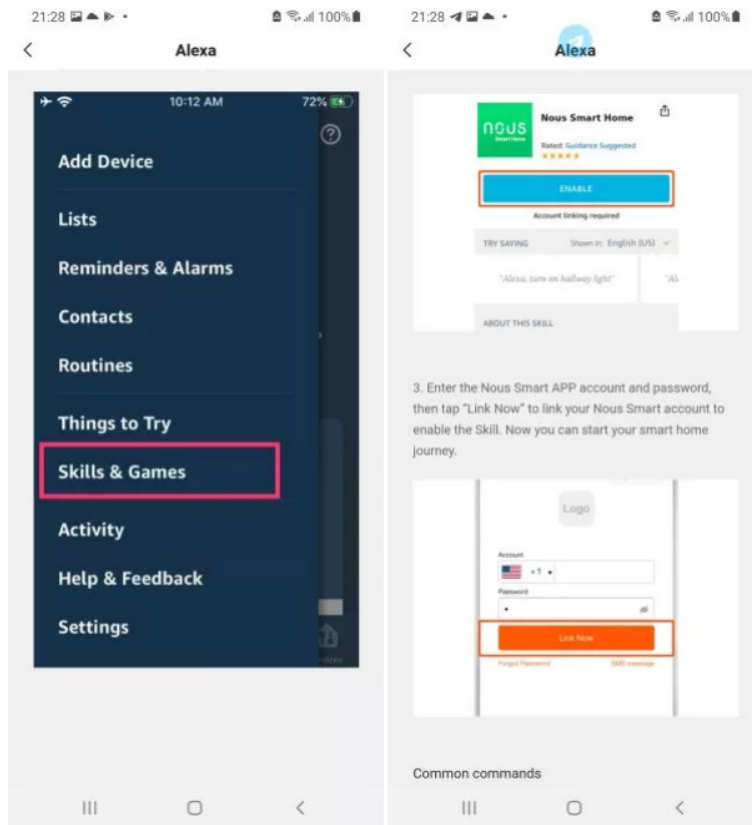


- Waiting for a few seconds, you can see the this device is shown and you may rename it.



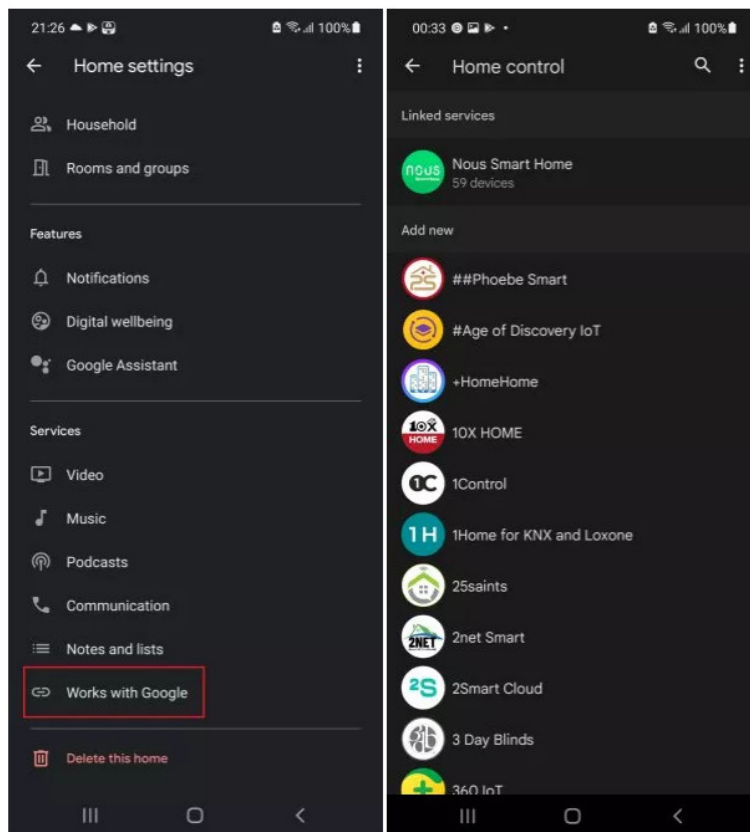
How to connect your device with Alexa

1. Go to settings and press "Skill and Games"
2. You have to have Alexa app on your smartphone
3. Search for the Nous Smart Home skill
4. Enable it
5. Link your Nous account with Alexa
6. Ask Alexa to discover new devices



How to connect your device with Google Home

1. Go to the home settings and press "works with google".
2. You have to have Google Home app on your smartphone.
3. Search for the Nous Smart Home.
4. Link the account with the Google Home.
5. All devices from Nous Smart app will appear in Google Home after synchronization.



Troubleshooting

Q1: How to set indicator light as rapid flashing?

Power on device. Power off after 10s and then power on. Hold the reset button for 5s. Confirm indicator light is now rapidlyflashing


Q2: How to set indicator light as slow flashing?

Power on device. Power off after 10s and then power on. Hold the reset button for 5s Confirm indicator light is now rapidly flashing. Hold reset button for 5s until indicator light is slowly flashing.

The new added device needs 1min to connect to networks and the internet if it stays offline for a long time please judge the problem by the networks LED status. Tetworks LED quickly blinks one time every second;

* This translation may be inaccurate because it was made with google translate service

nous

	<p>nouis L12Z Smart ZigBee Curtain Module [pdf] Instruction Manual</p> <p>L12Z Smart ZigBee Curtain Module, L12Z, Smart ZigBee Curtain Module, ZigBee Curtain Module, Curtain Module, Module</p>
--	--

References

- [🌐 Nouis Smart](#)
- [User Manual](#)