

nous E3 Window Sensor



nous E3 Window Sensor Instruction Manual

[Home](#) » [NOUS](#) » nous E3 Window Sensor Instruction Manual 

Contents

- 1 nous E3 Window Sensor
- 2 Specifications
- 3 Product Information
- 4 Usage Instructions
- 5 Maintenance
- 6 FAQ
- 7 PRECAUTIONS
- 8 Know about the Contact Sensor
- 9 Quick Installation Guide
- 10 Replace the battery
- 11 Documents / Resources
 - 11.1 References

nous

nous E3 Window Sensor



Specifications

- **Model:** XYZ-1000
- **Power:** 120V, 60Hz
- **Dimensions:** 10 x 8 x 12 inches
- **Weight:** 5 lbs
- **Material:** Plastic

Product Information

- The XYZ-1000 is a versatile home appliance designed to simplify your daily tasks.
- With its compact size and lightweight design, it is easy to use and store.
- The product is made of durable plastic, ensuring longevity and reliability.

Usage Instructions

- Before using the XYZ-1000, ensure all parts are properly assembled according to the user manual.
- Follow the step-by-step instructions provided to set up the product correctly.
- Plug the XYZ-1000 into a power outlet with the provided power cord.
- Make sure the voltage matches the specifications mentioned.
- Press the power button to turn on the appliance.
- The XYZ-1000 offers multiple operating modes for different functions.
- Refer to the user manual to understand each mode and select the appropriate one based on your requirements.

Maintenance

- Regularly clean the XYZ-1000 after each use to prevent dirt buildup.
- Follow the cleaning instructions in the manual to ensure optimal performance and longevity of the product.

FAQ

- **Q:** Can the XYZ-1000 be used for both wet and dry ingredients?
- **A:** Yes, the XYZ-1000 is designed to handle both wet and dry ingredients efficiently. Make sure to follow the recommended guidelines in the user manual for each type of ingredient.
- **Q:** How do I troubleshoot if the appliance stops working suddenly?
- **A:** If the XYZ-1000 stops working unexpectedly, check the power source, and connections, and ensure all parts are assembled correctly. If the issue persists, refer to the troubleshooting section in the user manual or contact customer support for assistance.

INSTRUCTION MANUAL

Door/Window Sensor E3

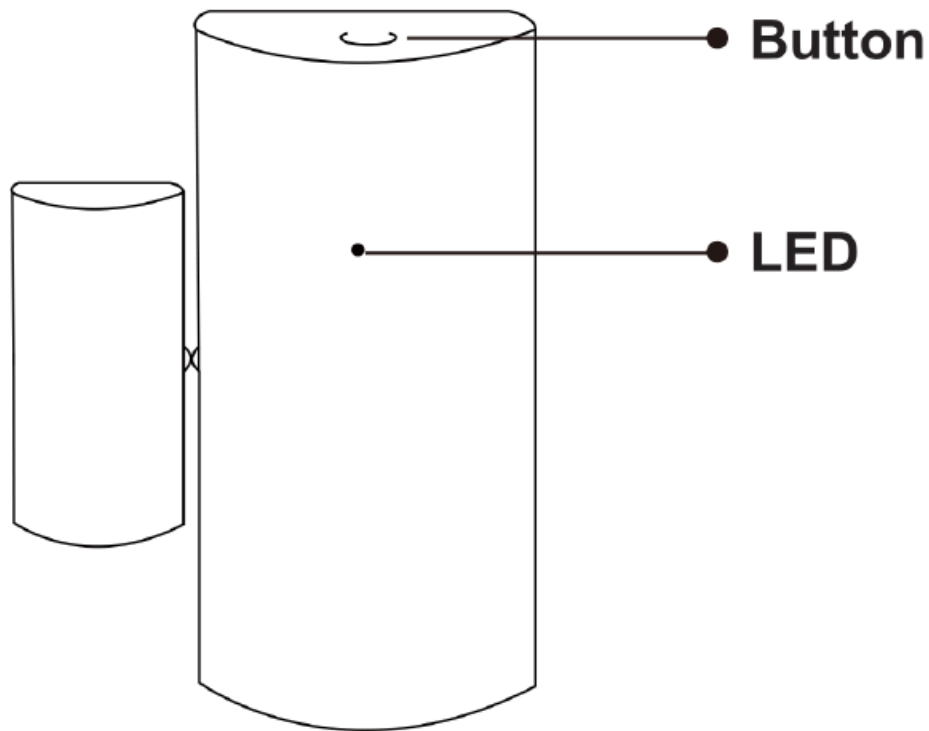
- You will need the Nous Smart Home App. Scan the QR code or download it from [direct link](#)



PRECAUTIONS

- Read this manual carefully.
- Use the product within the temperature and humidity limits specified in the technical data sheet.
- Do not install the product near heat sources, such as radiators, etc.
- Do not allow the device to fall and be subject to mechanical loads.
- Do not use chemically active and abrasive detergents to clean the product. Use a damp flannel cloth for this.
- Do not disassemble the product yourself – diagnostics and repair of the device must be carried out only in a certified service center.

Know about the Contact Sensor



Button

- Reset or enter configuration mode: Press and hold the button for 5 seconds until the blue LED blinks, and the device will enter configuration mode.

LED

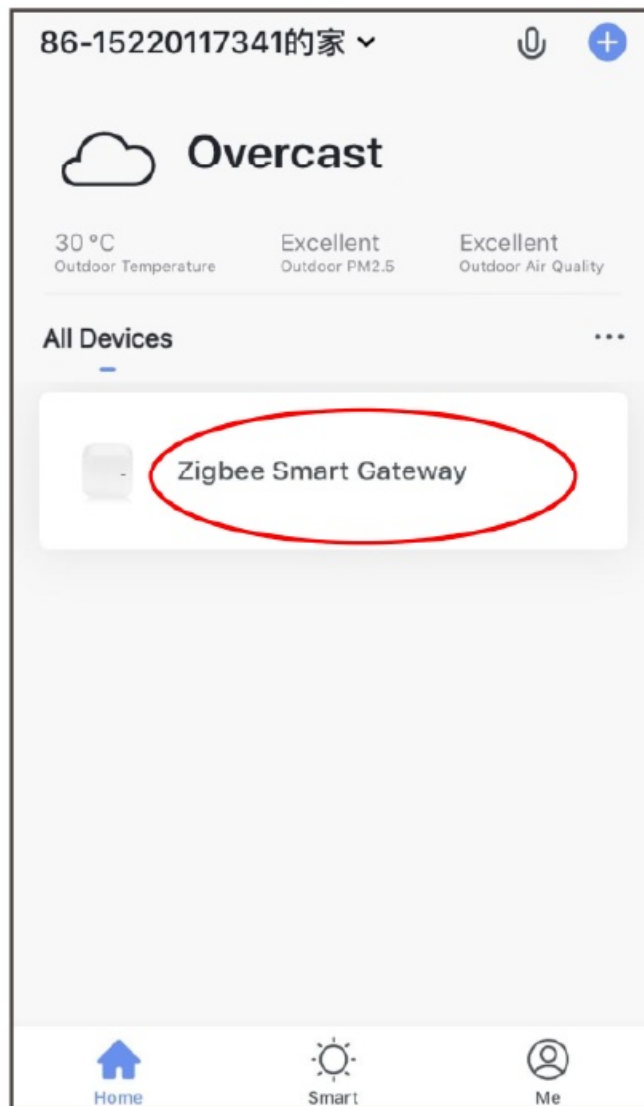
- **Blinking:** The device enters Zigbee network configuration mode(preparing to connect the gateway)
- **OFF:** The device is under standby status

Quick Installation Guide

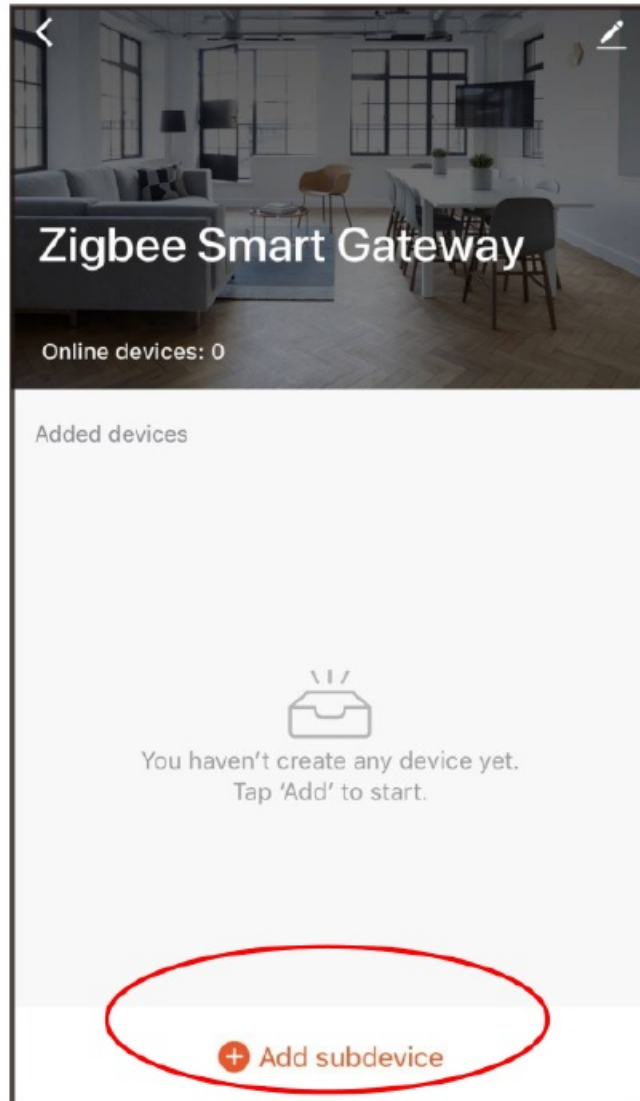
Note: Please make sure the gateway is added and on-line before the next step

- (If you have installed the NOUS Smart Home on your mobile phone, please go to step 2) Scan the QR code or search NOUS Smart Home in the APP Store or Google Play to install APP(new user must register their account first).
- Open NOUS Smart Home app, on the smart gateway homepage, Click: Zigbee Smart Gateway

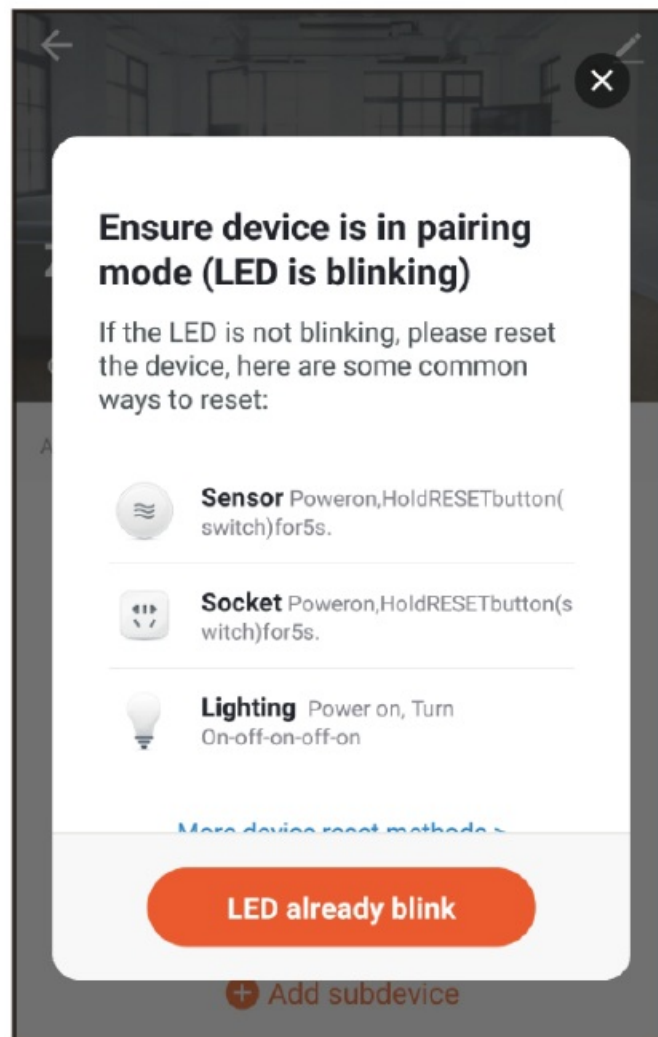
1



2 Click "+Add subdevice"

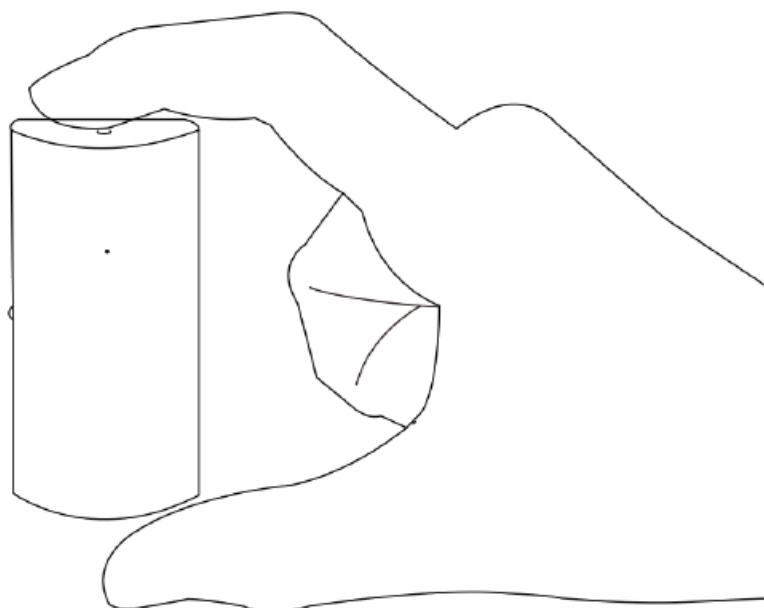


3



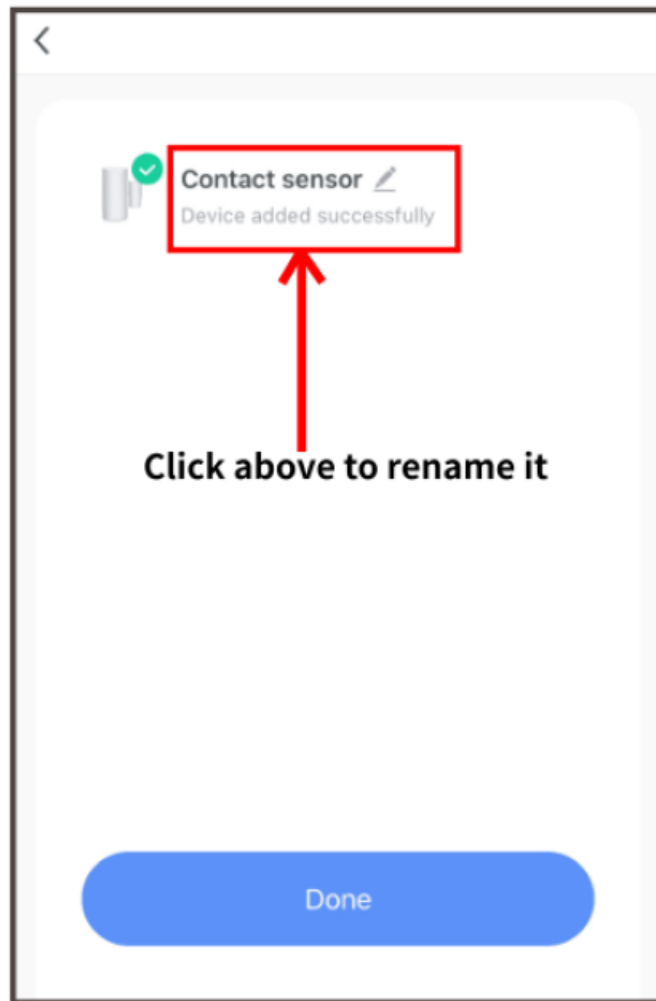
- Remove the insulation sheet and press the reset button for 5 seconds, till the blue LED blink, then click “LED already blink” on the app.

4

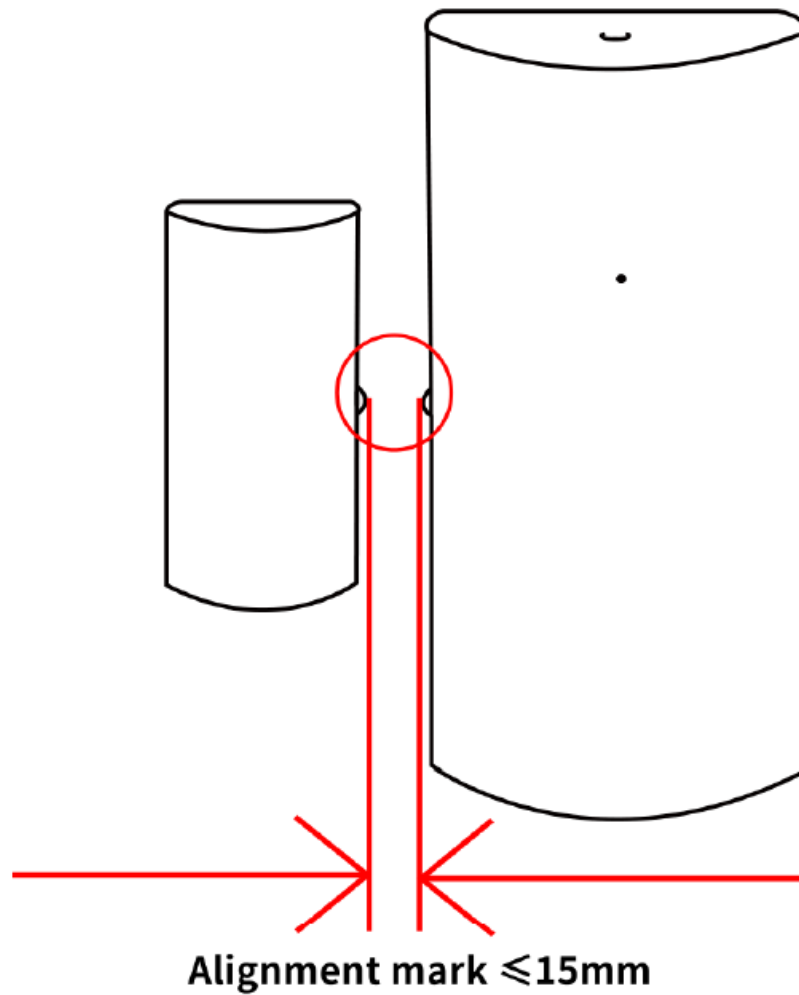


- After waiting for a few seconds, you can see that this device is shown and you may rename it.

5

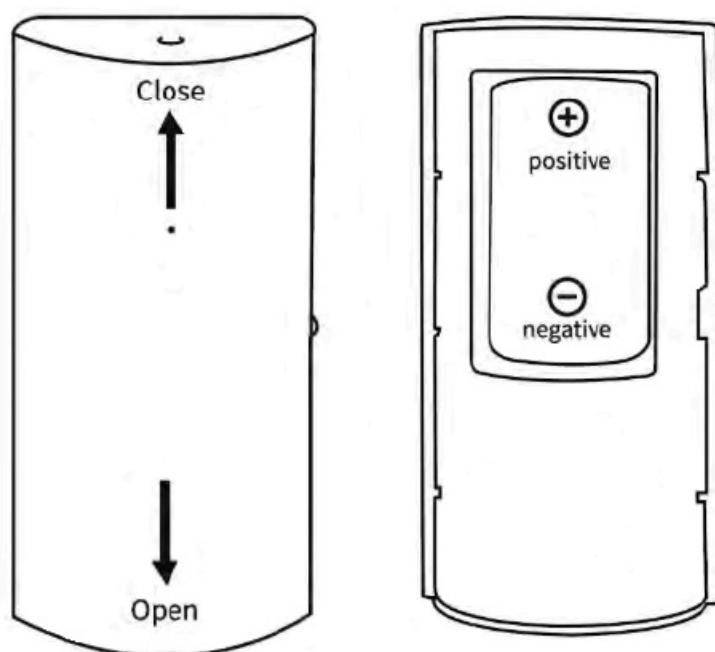



- Put it where you need it.
- The alignment marks must be as close together as possible.
Must be < 15mm



Replace the battery

- Open the back cover of the device
- Insert the new battery into the battery compartment (Please notice the battery positive and negative)



	nous E3 Window Sensor [pdf] Instruction Manual E3 Window Sensor, E3, Window Sensor, Sensor
--	---

References

- [User Manual](#)

Manuals+, Privacy Policy

This website is an independent publication and is neither affiliated with nor endorsed by any of the trademark owners. The "Bluetooth®" word mark and logos are registered trademarks owned by Bluetooth SIG, Inc. The "Wi-Fi®" word mark and logos are registered trademarks owned by the Wi-Fi Alliance. Any use of these marks on this website does not imply any affiliation with or endorsement.