



Nous A8 Smart WiFi Socket Instruction Manual

[Home](#) » [NOUS](#) » **Nous A8 Smart WiFi Socket Instruction Manual** 

Contents

- [1 Nous A8 Smart WiFi Socket](#)
- [2 Product Information](#)
- [3 Product Usage Instructions](#)
- [4 How to add your device to the Nous Smart app](#)
- [5 How to connect your device with](#)
 - [5.1 Alexa](#)
- [6 How to connect your device with Google Home](#)
- [7 How to disconnect and wipe all data](#)
- [8 Documents / Resources](#)
 - [8.1 References](#)
- [9 Related Posts](#)

nous

Nous A8 Smart WiFi Socket



Product Information

Product Name: Smart WiFi Socket Nous A8

Requirements:

- Nous Smart Home App

Compatibility:

The Smart WiFi Socket Nous A8 is compatible with the following:

- Alexa
- Google Home

Product Usage Instructions

How to Add Your Device to the Nous Smart App:

1. Plug in the device.
2. Ensure that the indicator is blinking rapidly. If not, hold the power button for 5 seconds until it starts blinking fast.
3. Turn on Bluetooth and Location on your phone temporarily.
4. Open the Nous Smart app.
5. Press the “+” button and select “Add device”.
6. The app will perform an autoscan and suggest adding a new device.
7. Confirm the connection and enter your WiFi network data.
8. Start the pairing process.
9. Once pairing is complete, you can rename your device if desired. It is now ready to be used.

10. If the autoscan does not detect your device, you can manually select it from the list and proceed with the connection from step number 7.

How to Connect Your Device with Alexa:

1. Ensure that you have the Alexa app installed on your smartphone.
2. Go to settings and select "Skill and Games".
3. Search for the "Nous Smart Home" skill and enable it.
4. Link your Nous account with Alexa.
5. Ask Alexa to discover new devices.

How to Connect Your Device with Google Home:

1. Ensure that you have the Google Home app installed on your smartphone.
2. Go to the home settings and select "Works with Google".
3. Search for "Nous Smart Home".
4. Link your account with Google Home.
5. All devices from the Nous Smart app will appear in Google Home after synchronization.

How to Disconnect and Wipe All Data:

Please refer to the product manual for instructions on how to disconnect and wipe all data.

You will need Nous Smart Home App. Scan the QR code or download it from direct link



How to add your device to the Nous Smart app

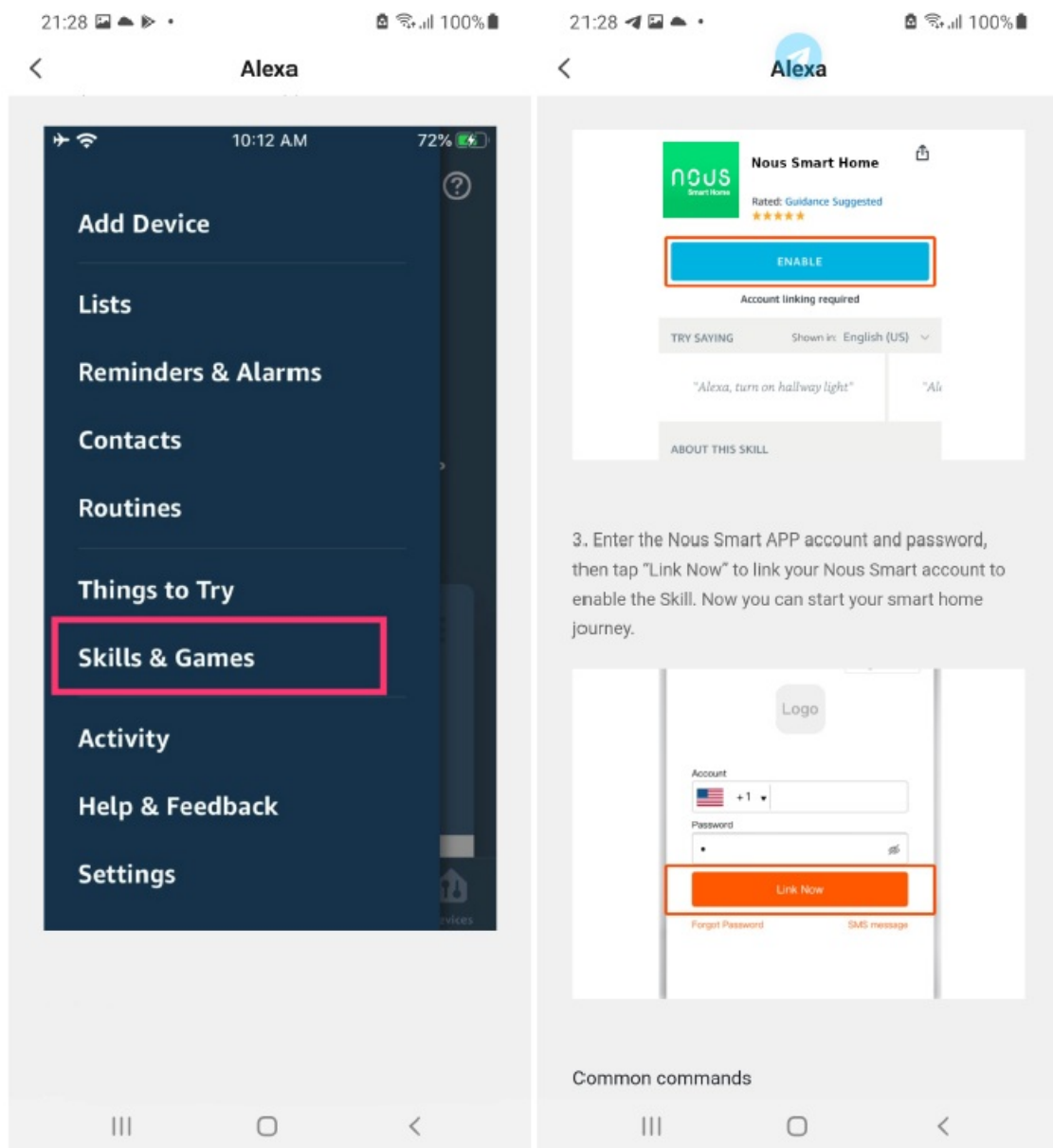
1. Plug in the device
2. Make sure that indicator is blinking rapidly(if not, hold power button for 5 seconds untill it starts blinking fast)
3. Turn on Bluetooth and Location on your phone(temporarily)
4. Open Nous Smart app
5. Press + and Add device
6. Autoscan will appear and it will suggest you to add new device
7. Confirm connection and your WiFi network data
8. Start pairing
9. After pairing is done, you can rename your device if you wish and its ready to be used
10. If autoscan does not see your device, you can pick it manually from the list and procced to connection from

step number 7.

How to connect your device with

Alexa

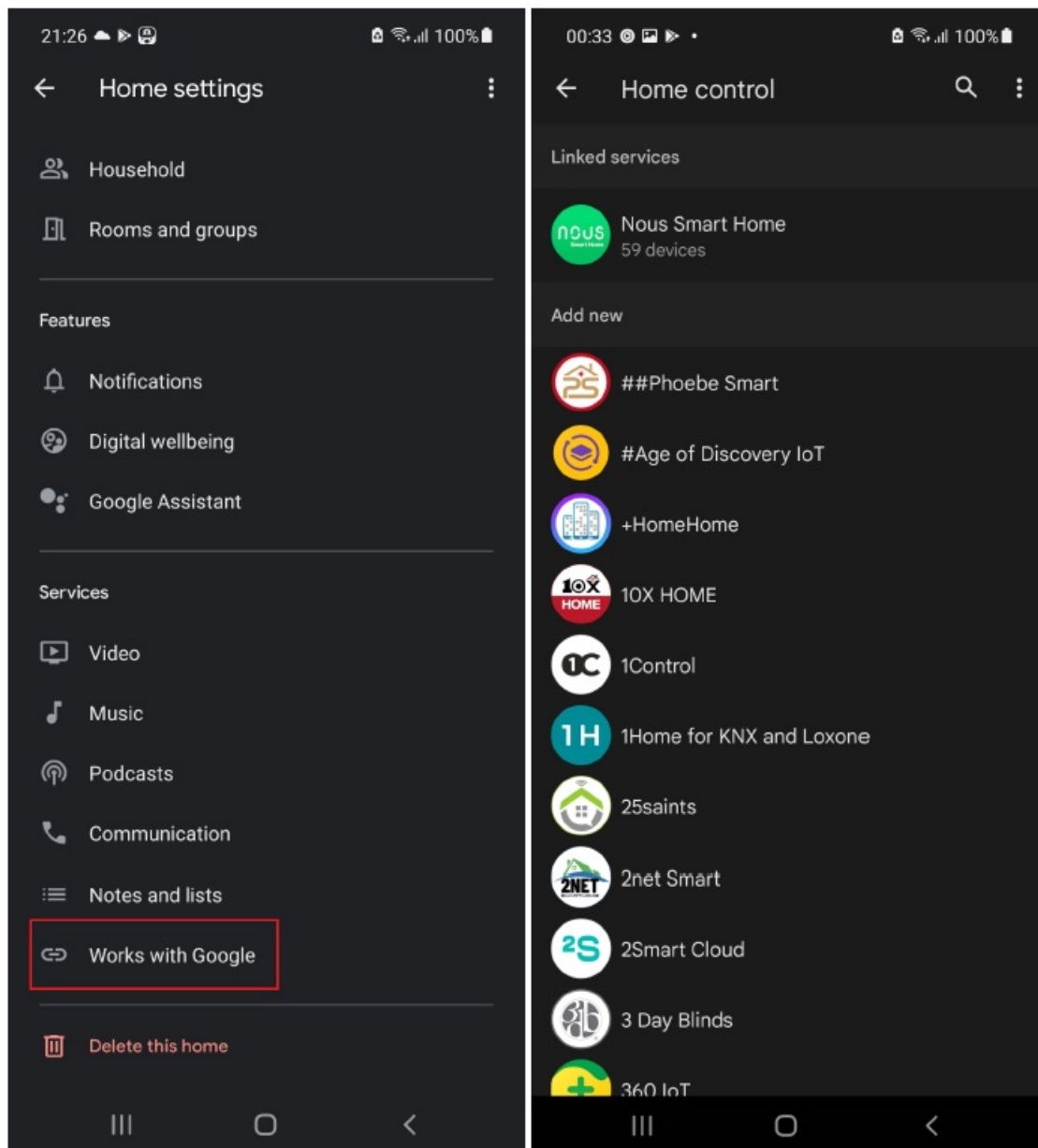
1. You have to have Alexa app on your smartphone
2. Go to settings and press "Skill and Games"
3. Search for the Nous Smart Home skill
4. Enable it
5. Link your Nous account with Alexa
6. Ask Alexa to discover new devices



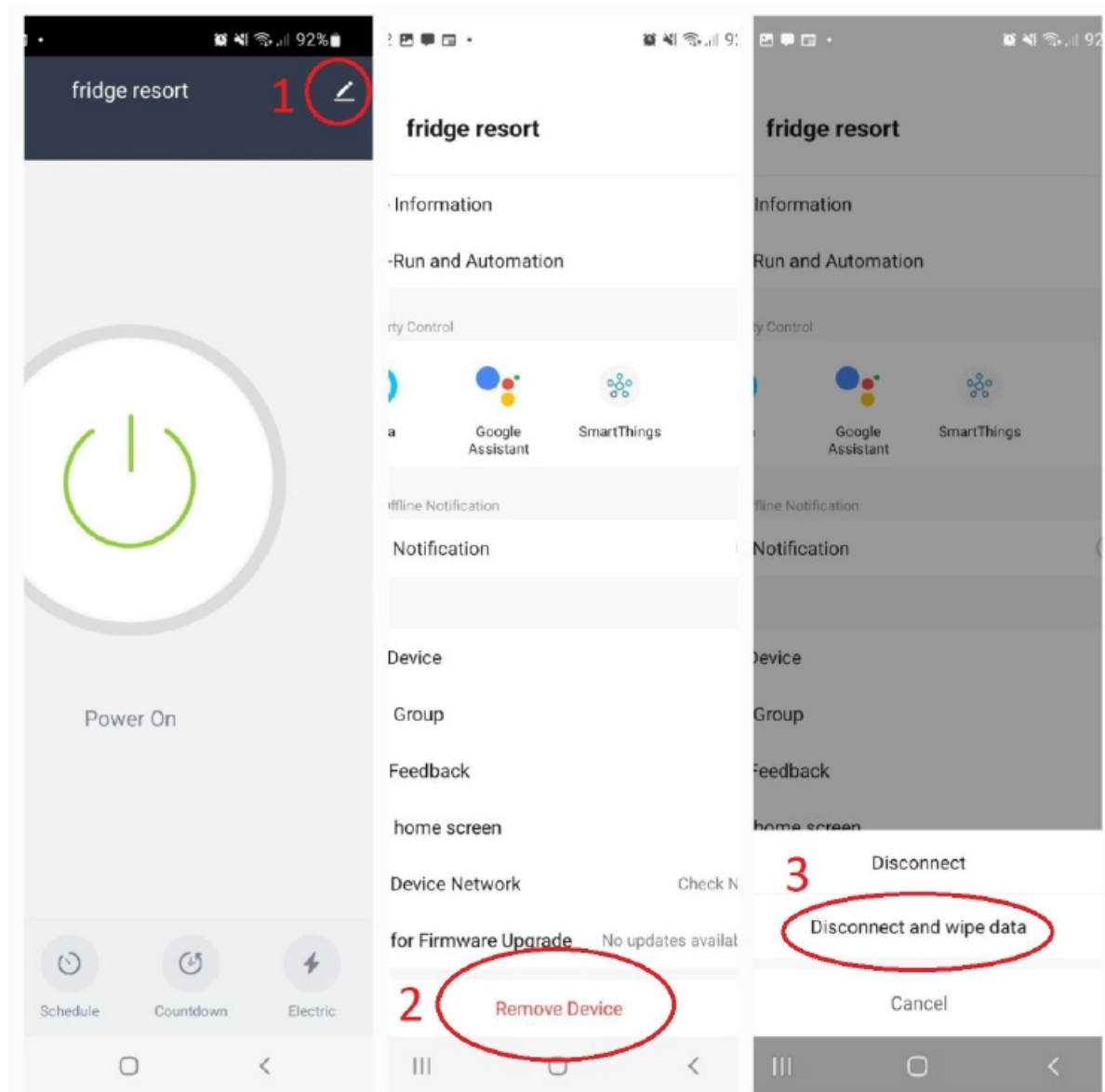
How to connect your device with Google Home

1. You have to have Google Home app on your smartphone
2. Go to the home settings and press "works with google"
3. Search for the Nous Smart Home


4. Link the account with the Google Home
5. All devices from Nous Smart app will appear in Google Home after synchronization



How to disconnect and wipe all data



Documents / Resources

<p>Instruction manual Smart WiFi Socket Nouis A8</p>  <p>How to add your device to the Nouis Smart app</p> <p>How to connect your device with</p>	<p>Nouis A8 Smart WiFi Socket [pdf] Instruction Manual A8, A8 Smart WiFi Socket, Smart WiFi Socket, WiFi Socket, Socket</p>
--	---

References

- [Nouis Smart](#)