



## Nous A1Z Smart ZigBee Socket Instruction Manual

[Home](#) » [NOUS](#) » Nous A1Z Smart ZigBee Socket Instruction Manual 

# nous

Instruction manual  
Smart ZigBee Socket Nous A1Z



You will need Nous Smart Home App. Scan the QR code or download it from [direct link](#)



<https://a.smart321.com/noussmart>

and you will need Nous E1, Nous E7 or other Tuya compatible ZigBee Gateway/Hub

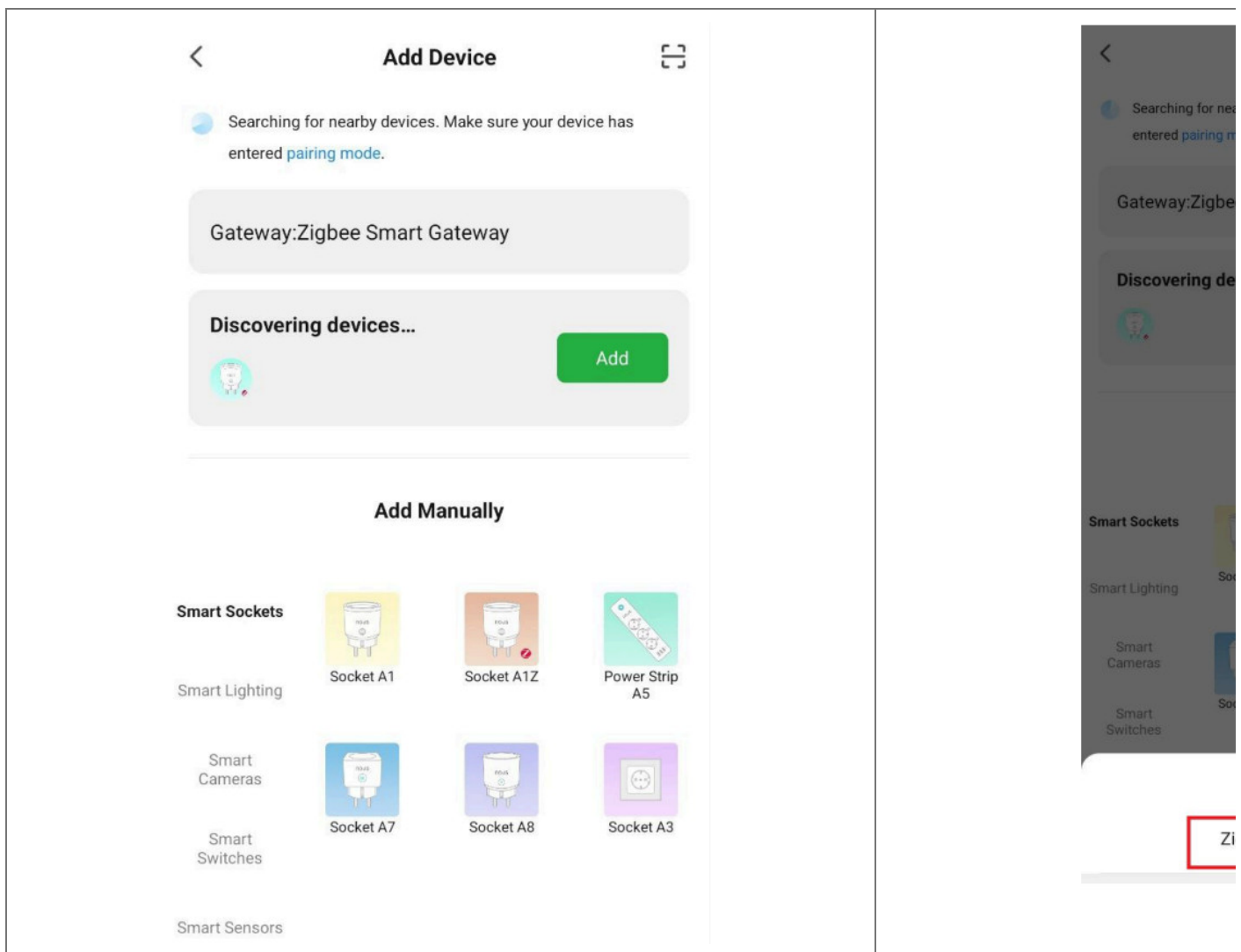
## Contents

- 1 How to add your device to the Nous Smart app
- 2 How to connect your device with Alexa
- 3 How to connect your device with Google Home
- 4 How to disconnect and wipe all data
- 5 Documents / Resources
  - 5.1 References

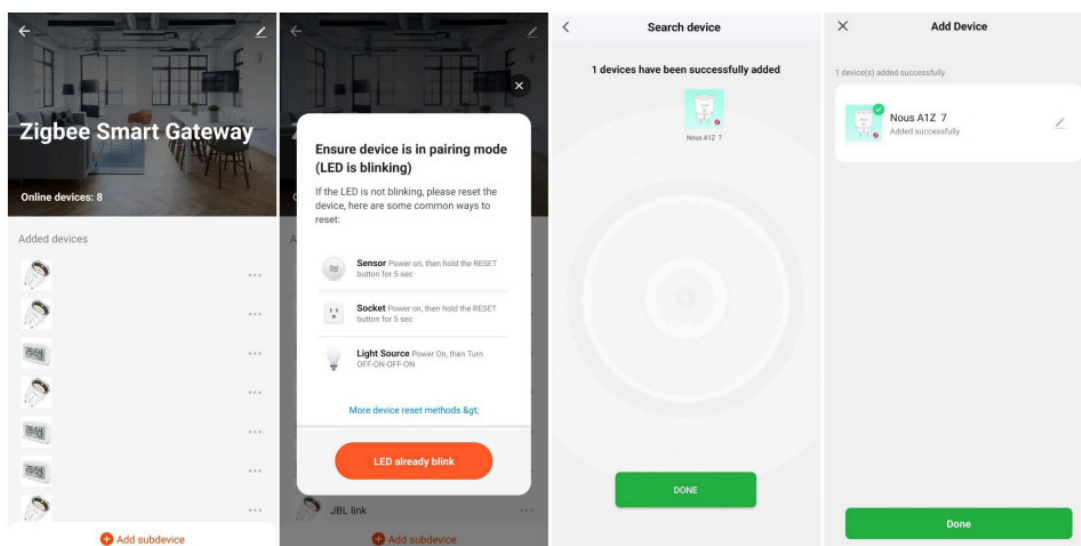
## How to add your device to the Nous Smart app

1. Plug in the device (your ZigBee Hub has to be connected to the app already)
2. Make sure that indicator is blinking rapidly (if not, hold power button for 5 seconds until it starts blinking fast)
3. Turn on Bluetooth and Location on your phone (temporarily)
4. Open Nous Smart app
5. Press + and Add device
6. Autoscanner will appear and it will suggest you to add new device
7. Start pairing
8. Confirm connection and your WiFi network data
9. After pairing is done, you can rename your device if you wish and it's ready to be used
10. If autoscanner does not see your device, you can pick it manually from the list of devices and proceed to connection from step number 7.

**Note:** The device name will also be used by Amazon Alexa and Google Home  
**autoscanner connection or manual connection**



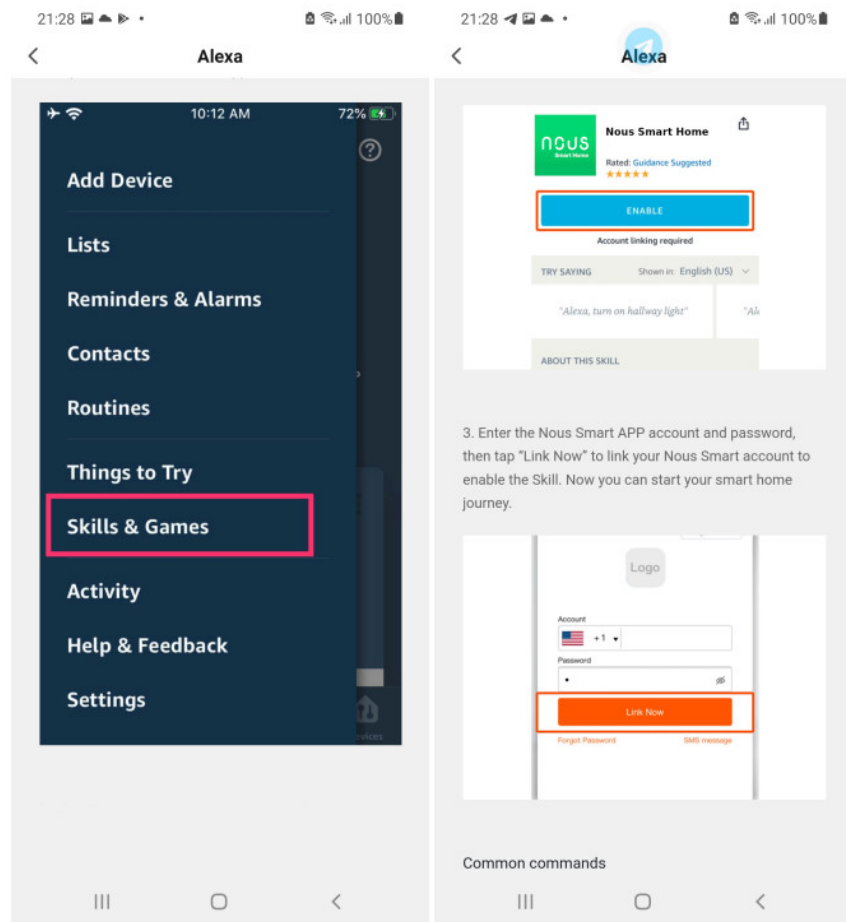
## connection with zigbee hub



## How to connect your device with Alexa

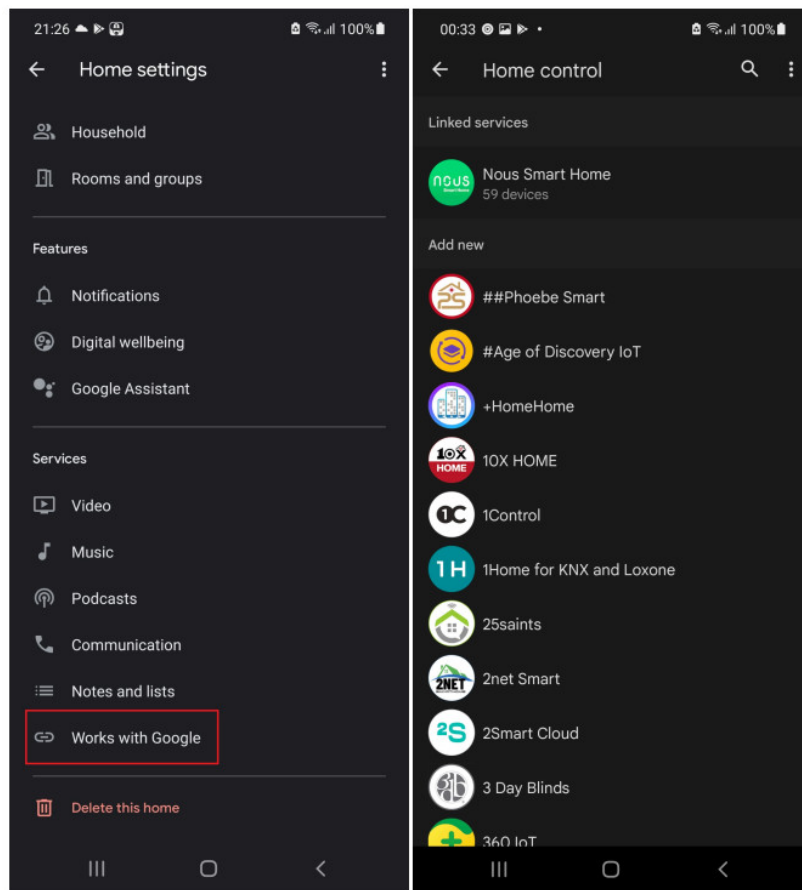
1. Go to settings and press "Skill and Games"
2. You have to have Alexa app on your smartphone
3. Search for the Nous Smart Home skill
4. Enable it

5. Link your Nouis account with Alexa
6. Ask Alexa to discover new devices

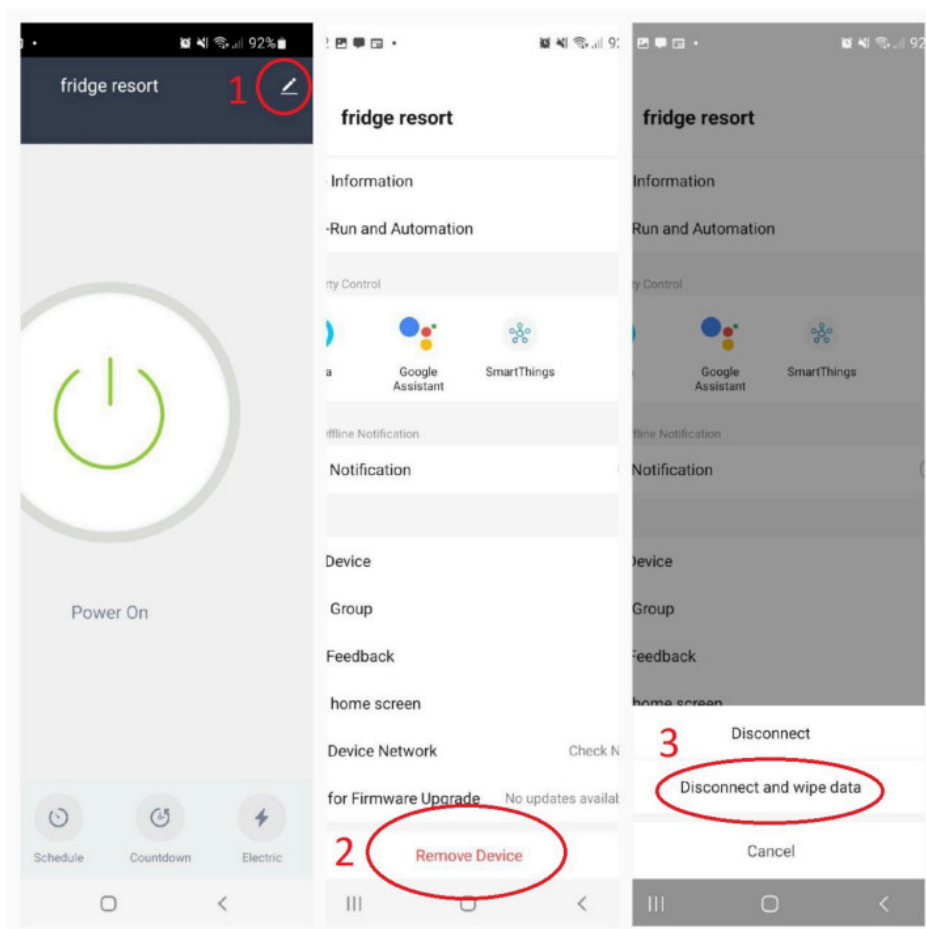


## How to connect your device with Google Home

1. Go to the home settings and press "works with google"
2. You have to have Google Home app on your smartphone
3. Search for the Nouis Smart Home
4. Link the account with the Google Home
5. All devices from Nouis Smart app will appear in Google Home after synchronization




## How to disconnect and wipe all data



# nous

---

## Documents / Resources

	<p><a href="#">Nous A1Z Smart ZigBee Socket</a> [pdf] Instruction Manual A1Z Smart ZigBee Socket, A1Z, Smart ZigBee Socket, ZigBee Socket, Socket</p>
---	---

## References

- [User Manual](#)