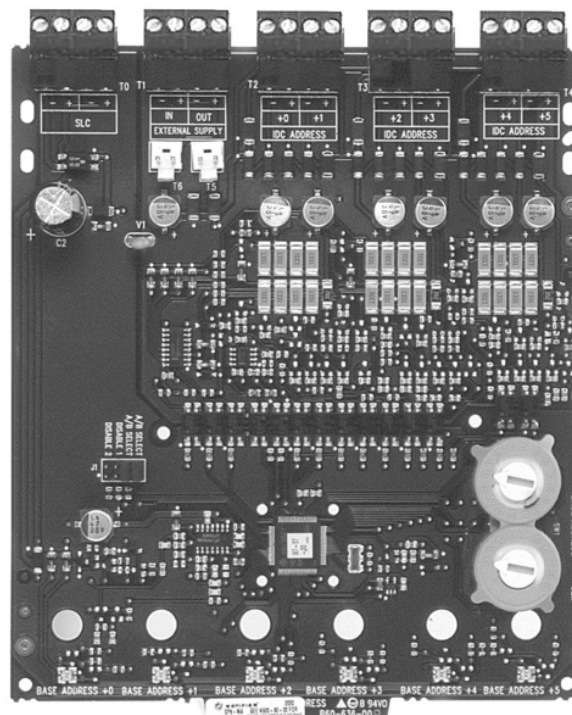


# NOTIFIER XP6-MA Six Zone Interface Module Instruction Manual

[Home](#) » [NOTIFIER](#) » NOTIFIER XP6-MA Six Zone Interface Module Instruction Manual 



**XP6-MA(A)**  
**Six Zone Interface Module**  
**Intelligent/Addressable Devices**  
**DN-6925:D**  
**H-354**  
**Instruction Manual**



## Contents

### [1 General](#)

### [2 Features](#)

### [3 Specifications](#)

### [4 Agency Listings and Approvals](#)

### [5 Product Line Information](#)

### [6 Documents / Resources](#)

#### [6.1 References](#)

### [7 Related Posts](#)

## General

NOTIFIER's XP6-MA six-zone interface module provides an interface between the intelligent alarm system and a two-wire conventional detection zone. A common SLC input is used for all modules, and the initiating device circuits share a common external supervisory supply and ground. Otherwise, each module operates independently from the others.

The first module is addressed from 01 to 154 while the remaining modules are automatically assigned to the next five higher addresses. Provisions are included for disabling a maximum of two unused modules. All two-wire detectors being monitored must be two-wire-compatibility-listed with the modules. The XP6-MA transmits the status of a zone of two-wire detectors to the fire alarm control panel. Status conditions are reported as normal, open, or alarm. The interface module supervises the zone of detectors and the connection of the external power supply.

Each XP6-MA module has panel-controlled bicolor LED indicators. The panel can cause the LEDs to blink, latch on, or latch off.

## Features

- Six addressable Class B or three addressable Class A initiating device circuits.
- Removable 12 AWG (3.1 mm<sup>2</sup>) to 18 AWG (0.78 mm<sup>2</sup>) plugin terminal blocks.
- Status indicators for each point.
- Up to two unused addresses may be disabled.
- Rotary address switches.
- Class A or Class B operation.
- FlashScan® or CLIP operation.
- Mount one or two modules in a BB-XP cabinet (optional).
- Mount up to six modules on a CHS-6 chassis in a CAB-3 Series, CAB-4 Series, BB-25 cabinet (optional), or EQ Cabinet Series.
- Mounting hardware included.

## Specifications

**Standby current:** 2.0 mA (SLC current draw with all addresses used; if some addresses are disabled, the standby current decreases).

**Alarm current:** 40 mA (assumes all six LEDs solid ON).

**Temperature range:** 32°F to 120°F (0°C to 49°C).

**Humidity:** 10% to 85% noncondensing.

**Dimensions:** 6.8" (172.72 mm) high x 5.8" (147.32 mm) wide x 1.25" (31.75 mm) deep.

**Shipping weight:** 1.1 lb. (0.499 kg) including packaging.

**Mounting options:** CHS-6 chassis, BB-XP cabinet, BB-25 cabinet, CAB-3 Series cabinet (see DN-3549), CAB-4 Series cabinet (see DN-6857), or EQ series cabinet (see DN-60262).

**Wire gauge:** 12 AWG (3.1 mm<sup>2</sup>) to 18 AWG (0.78 mm<sup>2</sup>).

**XP6-MA is shipped in Class B position:** Remove shunt for Class A operation.

**Maximum SLC wiring resistance:** 40 or 50 ohms, panel dependent.

**Maximum IDC wiring resistance:** 25 ohms.

**External supply voltage: DC voltage:** 18 – 28 volts powerlimited.

**Ripple voltage:** 0.1 Vrms maximum. External supply current: 90 mA maximum per address in alarm. In Class B operation, 540 mA maximum for all six addresses in alarm. In Class A operation, 270 mA maximum for all three addresses in alarm.

**Compatible detectors:** See the Notifier Device Compatibility Document.

## Agency Listings and Approvals

These listings and approvals apply to the modules specified in this document. In some cases, certain modules or applications may not be listed by certain approval agencies, or listing may be in process. Consult factory for latest listing status.

- **UL Listed:** S635 (XP6-MA).
- **ULC Listed:** S635 (XP6-MAA).
- **MEA Listed:** 386-02-E.
- **CSFM:** 7300-0028:0219, 7165-0028:0243.
- FM Approved.
- **FDNY:** COA#6085, #6121.
- City of Chicago.
- City of Denver.

## Product Line Information

**XP6-MA:** Six-zone conventional-detector interface module.

**XP6-MAA:** Same as above with ULC Listing.

**BB-XP:** Optional cabinet for one or two modules. Dimensions, DOOR: 9.234" (23.454 cm) wide (9.484" [24.089 cm] including hinges), x 12.218" (31.0337 cm) high, x 0.672" (1.7068 cm) deep; BACKBOX: 9.0" (22.860 cm) wide (9.25" [23.495 cm] including hinges), x 12.0" (30.480 cm) high x 2.75" (6.985 cm); CHASSIS (installed): 7.150" (18.161 cm) wide overall x 7.312" (18.5725 cm) high interior overall x 2.156" (5.4762 cm) deep overall.

**BB-25:** Optional cabinet for up to six modules mounted on CHS-6 chassis (below). Dimensions, DOOR: 24.0" (60.96 cm) wide x 12.632" (32.0852 cm) high, x 1.25" (3.175 cm) deep, hinged at bottom; BACKBOX: 24.0" (60.96 cm) wide x 12.550" (31.877 cm) high x 5.218" (13.2537 cm) deep.

**CHS-6:** Chassis, mounts up to six modules in a CAB-3 Series (see DN-3549) CAB-4 Series (see DN-6857) cabinet, EQ Cabinet Series (see DN-60229), or BB-25.

NOTIFIER® and FlashScan® are registered trademarks of Honeywell International Inc.

©2013 by Honeywell International Inc. All rights reserved. Unauthorized use of this document is strictly prohibited.



This document is not intended to be used for installation purposes. We try to keep our product information up-to-date and accurate. We cannot cover all specific applications or anticipate all requirements. All specifications are subject to change without notice.



For more information, contact Notifier.

Phone: (203) 484-7161, FAX: (203) 484-7118.

[www.notifier.com](http://www.notifier.com)


Made in the U.S. A.

DN-6925:D


05/16/2013

[firealarmresources.com](http://firealarmresources.com)

## Documents / Resources

	<p><a href="#">NOTIFIER XP6-MA Six Zone Interface Module</a> [pdf] Instruction Manual XP6-MA, XP6-MA Six Zone Interface Module, Six Zone Interface Module, Interface Module, Module</p>
---	---

## References

-  [Fire Alarm Resources | Download fire alarm documents](#)
-  [Home \(USA\) | NOTIFIER by Honeywell | Engineered Fire Alarm System.](#)

Manuals+.