

NOTIFIER INSPIRE™ CONFIGURATION GUIDE

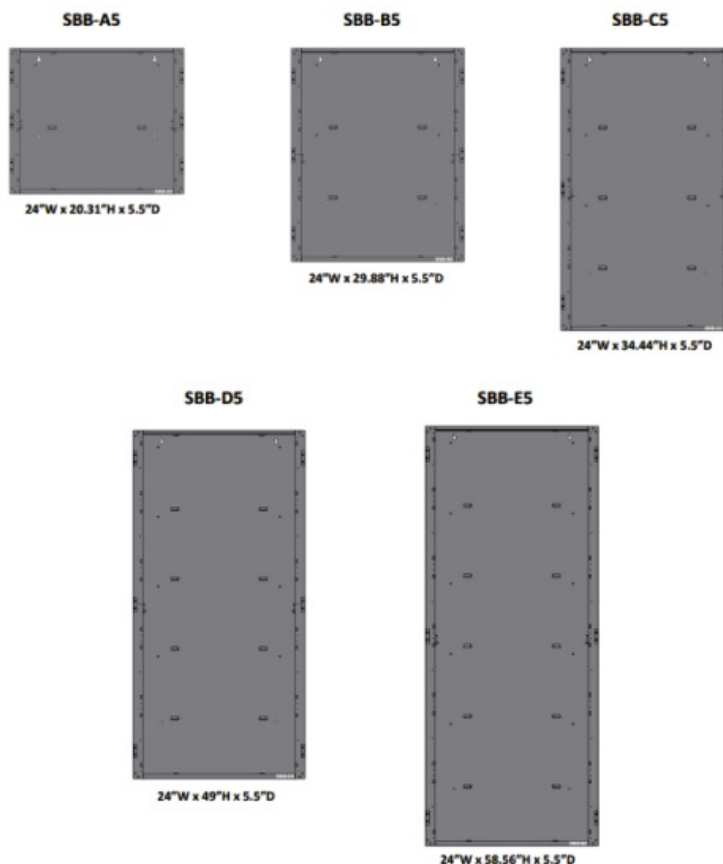
REV A

10/4/2022

Contents [[hide](#)]

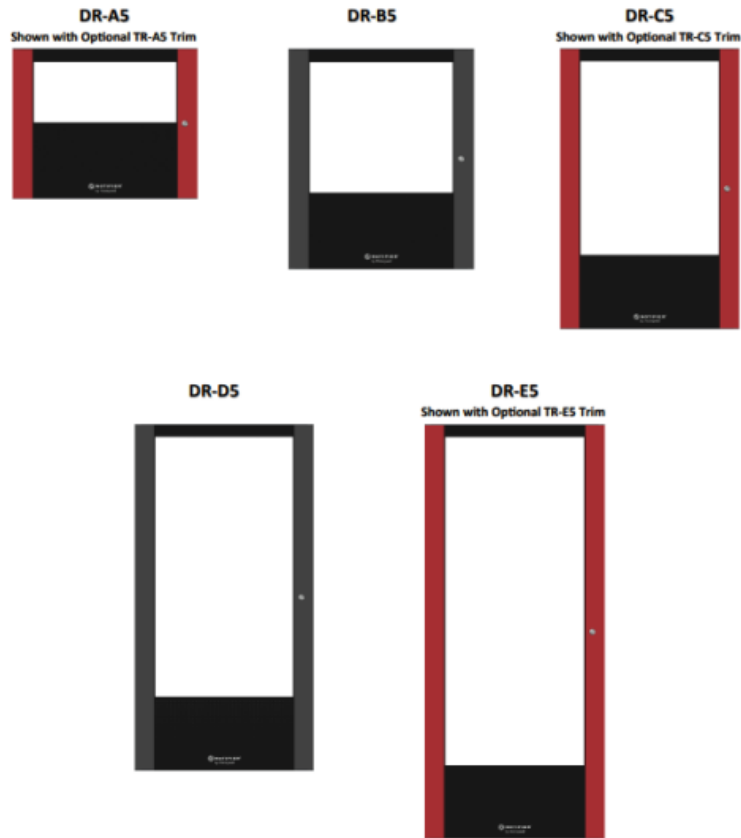
- 1 CAB-5 Series Backbox Options
- 2 CAB-5 Series Cabinet Mounted Chassis
- 3 CAB-5 Series Dress Panels
- 4 CAB-4 Series Retrofit Chassis
- 5 NOTIFIER INSPIRE Annunciator Modules and SLC
- 6 NOTIFIER INSPIRE Off-Premise Communication
- 7 High-Speed Network Cards
- 8 Standard Speed Network Cards
- 9 NOTIFIER INSPIRE PANEL LICENSING
- 10 SPECIAL RETROFIT CONSIDERATION:
- 11 Documents / Resources
 - 11.1 References

CAB-5 Series Backbox Options



CAB-5 Series Door Options

("B" after any part number below will result in a solid "blank" door)



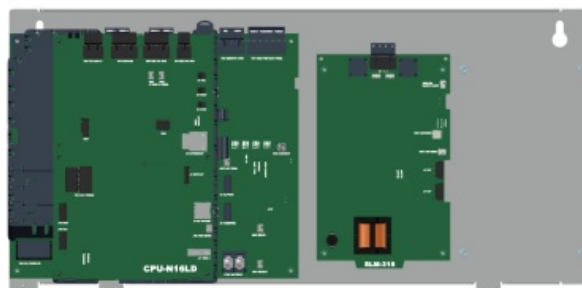
Note: All doors shown hinged left but may be hinged right flipping the trim and lock.

CAB-5 Series Cabinet Mounted Chassis

CPU-N16LND/CPU-N16LD

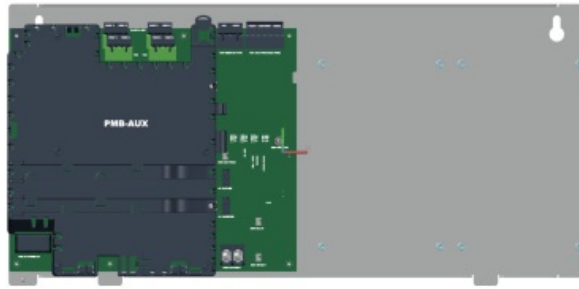
Includes Inspire Panel Core, CAB-5 Chassis, Power Supply, and SLM-318 Card Chassis supports up to 6 Cards (2 wide x 3 deep)

* CPU-N16LD includes the 10" display (not shown)



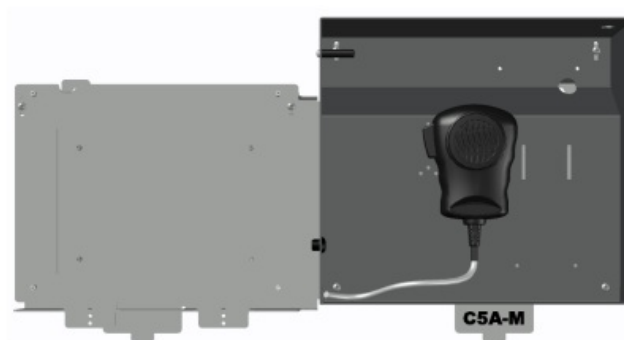
PMB-AUX

Includes CAB-5 Chassis and Power Supply Chassis supports up to 6 Cards (2 wide x 3 deep)



C5A-M

Includes CAB-5 Audio Chassis, Audio Well and Microphone Chassis supports DVC and up to 2 Cards (Limited Access) Audio Well supports optional TELH-1 Telephone (DVC-EM and DVC-KDB ordered separately) Mounts in Rows 1, 2, or 3 (adjustable for Rows 1 or 3)



C5A-NW

CAB-5 Audio Chassis Only

Chassis mounts DVC and up to 2 Cards

(DVC-EM and DVC-KDB must be ordered separately)

Mounts in Rows 1, 2, or 3 (adjustable for Rows 1 or 3)



CHS-ADP

CAB-5 Adaptor for mounting CAB-4 series chassis or equipment (i.e. CHS-4L, CHS-6, etc.)



CAB-5 Series Dress Panels

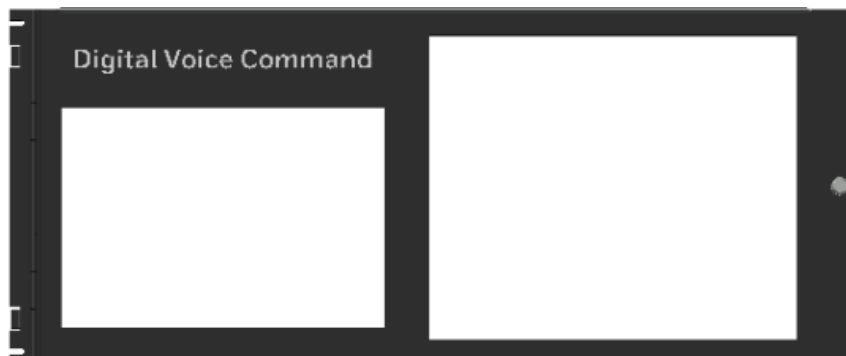
DP-T2A

Mounts 10" Display with 2 ACM-30 Locations (or ABP-1 Blank Covers)



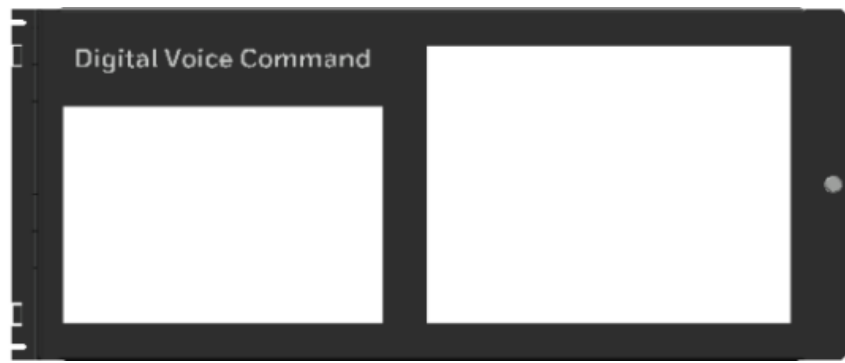
DPA-C5

Used to Cover C5A-M



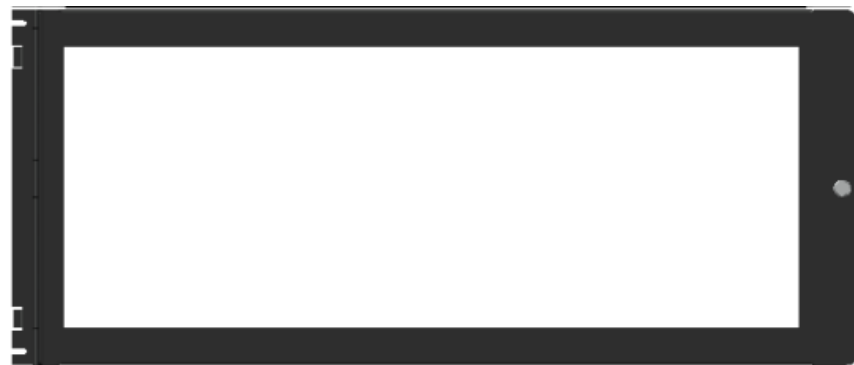
DPA-2A5

Used with C5A-NW with 2 ACM-30 Locations (or ABP-1 Annunciator Blank Covers)



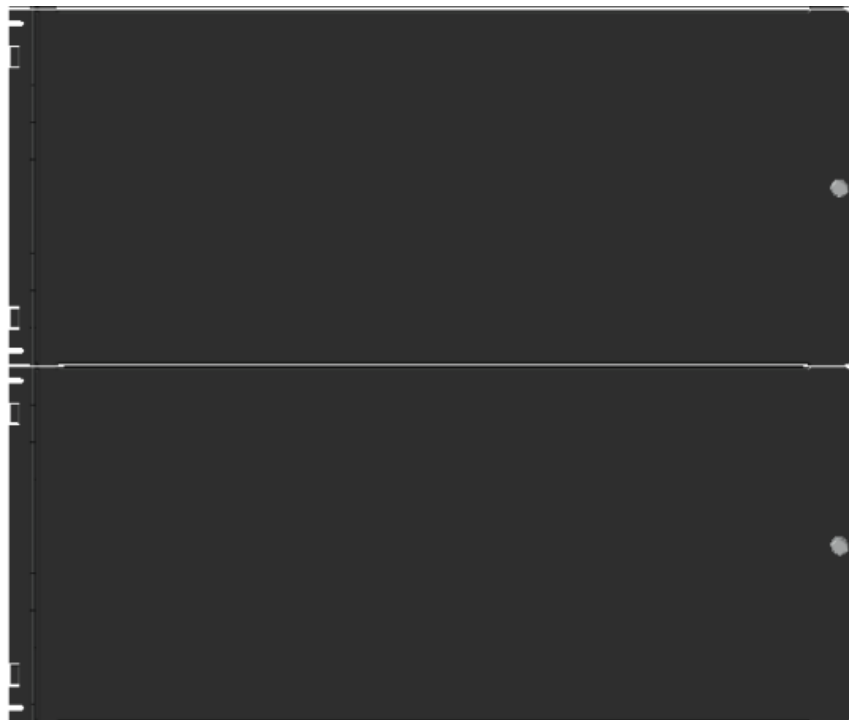
DP-4A

Mounts 4 ACM-30 Annunciators (or ABP-1 Annunciator Blank Covers)



DP-BLN

Blank Dress Panel



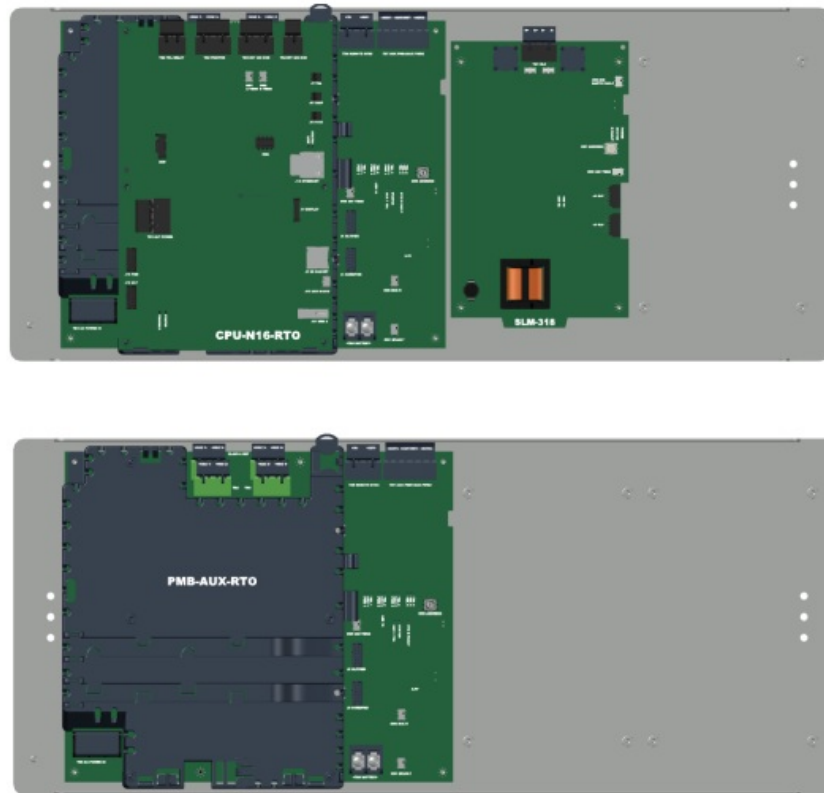
BP-5

Covers Bottom Section of CAB-5 Enclosures

CAB-4 Series Retrofit Chassis

CPU-N16-RTO

Includes Inspire Panel Core, CAB-4 Chassis, Power Supply, 10" Display and SLM-318 Card Chassis supports up to 6 Cards (2 wide x 3 deep) (Display not shown)



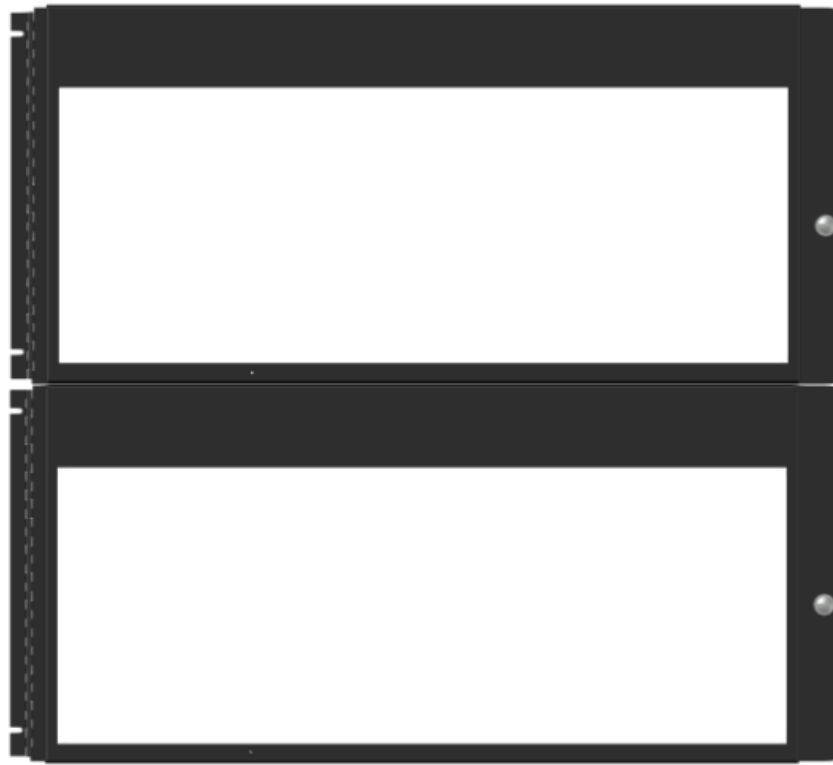
PMB-AUX-RTO

Includes CAB-4 Chassis and Power Supply Chassis supports up to 6 Cards (2 wide x 3 deep)

CAB-4 Series Retrofit Dress Panels

DP-T2A-CB4

Mounts 10" Display with 2 ACM-30 Locations (or APD-1 Annunciator Blank Covers)



DP-4A-CB4

Mounts 4 ACM-30 Annunciators (or ADP-1 Annunciator Blank Covers)

NOTIFIER INSPIRE Annunciator Modules and SLC

ACM-30

Provides 30 programmable capacitive-touch control points and 60 mappable multi-colored LEDs.

80 ACM-30s per CPU, 10 Router Addresses, 15 Peripherals per Router Options Order ACM-30CBL (includes four 6" and one 48" ribbon cable) when configuring ACM-30s as Peripherals

* Only DP-T2A-CB4 or DP-4A-CB4 retrofit dress panels are supported for CAB-4 Series.



ABP-1

Covers unused ACM-30 position

Provides mounting options for cards (limited).

* Only DP-T2A or DP-4A-CB4 retrofit dress panels are supported for CAB-4 Series.

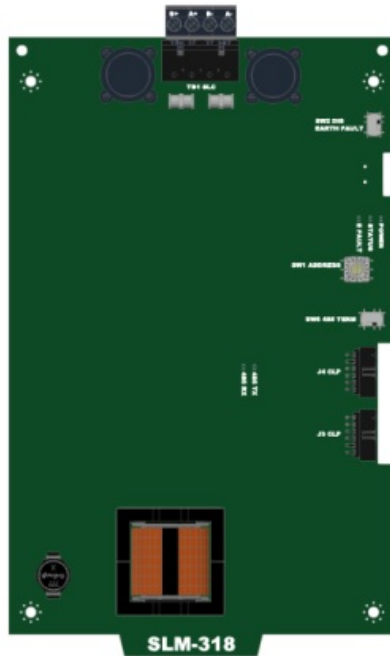


SLM-318

Provides SLC Communications to Inspire Series panels for up to 159 Detectors and 159 Modules via Flashscan protocol.

Up to 10 SLM-318 cards may be on a N16 Panel. More than 5 SLM-318 cards requires a PMB-AUX.

CLIP protocol may be activated via a panel license.



NOTIFIER INSPIRE Off-Premise Communication

HON-CGW-MBB

CLSS Gateway in surface-mount plastic enclosure (required for wireless/cellular communications)

Options

50160636-001: 30" NUP Cable and Notifier lock and key set

32351718-001: 10' NUP Cable

CCM-ATT-HON: AT&T Cellular Communication Module

CCM-VZ-HON: Verizon Cellular Communication Module



CHS-CGW

Use CHS-CGW for mounting the gateway on the CPU-N16 or PMB-AUX chassis only*

* For wired sole-path IP communication only

Note: Wireless/cellular communication is NOT supported within metal enclosures.

Order the HON-CGW-MBB separately and remove the gateway from the plastic enclosure.

Must be mounted in the far right position of CPU-N16 or PMB-AUX chassis and does not support cards stacked in front. If in the 3rd card position, do not mount ACM-30 in front on dress panel.

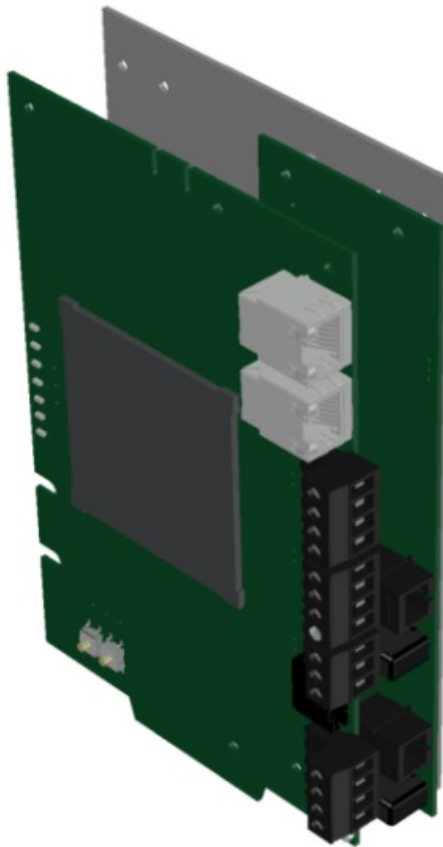


CGW-DACT-NF

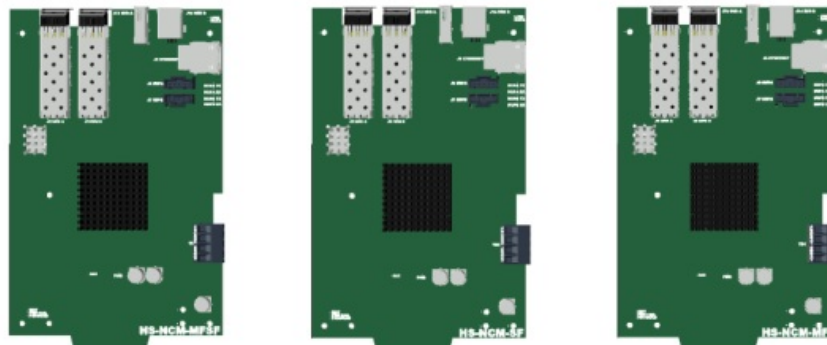
POTS Dialer which comes with Gateway board, POTS card, and mounting chassis for mounting in any standard card location. Requires 2 stacked card locations.

Gateway board is dedicated for dialer control and will not function as a standard CLSS gateway.

Must be mounted in the far right position of chassis and does not support cards stacked in front.



High-Speed Network Cards



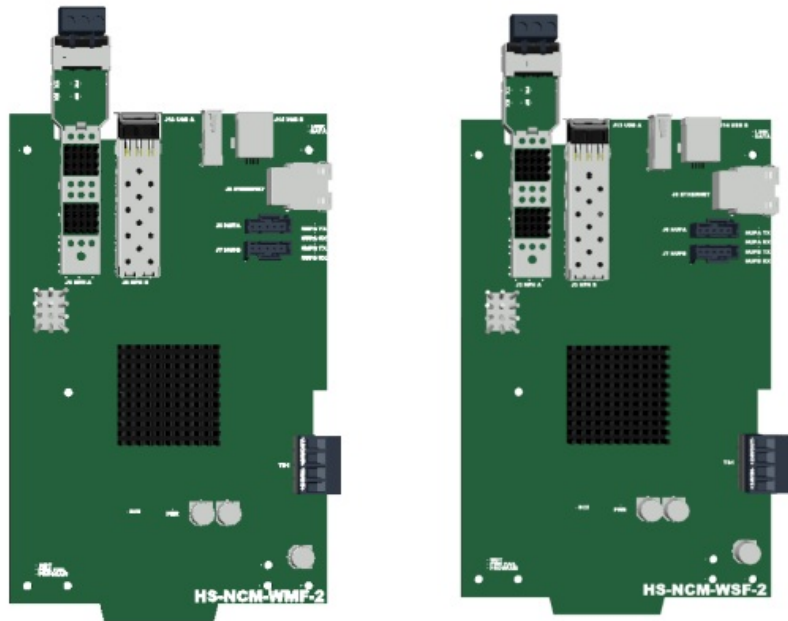
HS-NCM-MFSF / HS-NCM-SF / HS-NCM-MF

HS-NCM-MFSF provides one Multi-Mode LC port and one Single-Mode fiber LC port for High-Speed network communication.

HS-NCM-SF provides two Single-Mode fiber LC ports for High-Speed network communication.

HS-NCM-MF provides two Multi-Mode fiber LC ports for High-Speed network communication.

Each HS-NCM card allows for connection to up to 2 network nodes via NUP connectors.

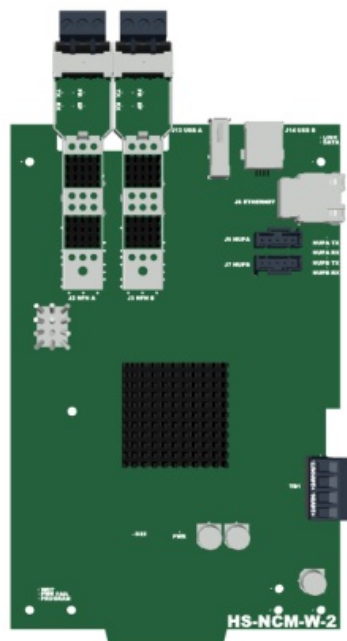


HS-NCM-WMF-2 / HS-NCM-WSF-2

HS-NCM-WMF-2 provides one Multi-Mode fiber LC port and one wired port for High-Speed network communication.

HS-NCM-WSF-2 provides one Single-Mode fiber LC port and one wired port for High-Speed network communication.

Each HS-NCM card allows for connection to up to 2 network nodes via NUP connectors.

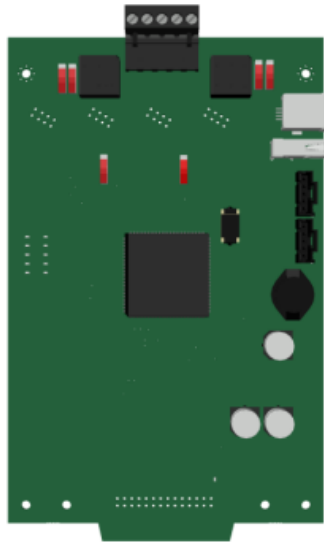


HS-NCM-W-2

HS-NCM-WMF-2 provides two wired LC ports for High-Speed network communication.

Each HS-NCM card allows for connection to up to 2 network nodes via NUP connectors.

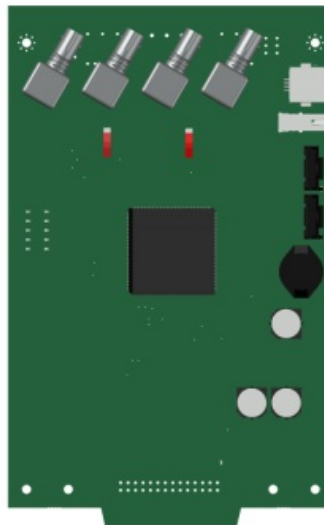
Standard Speed Network Cards



NCM-W

NCM-W provides two wired ports for Standard-Speed network communications.

Each NCM-W card allows for connection to 1 network node via one NUP connector.



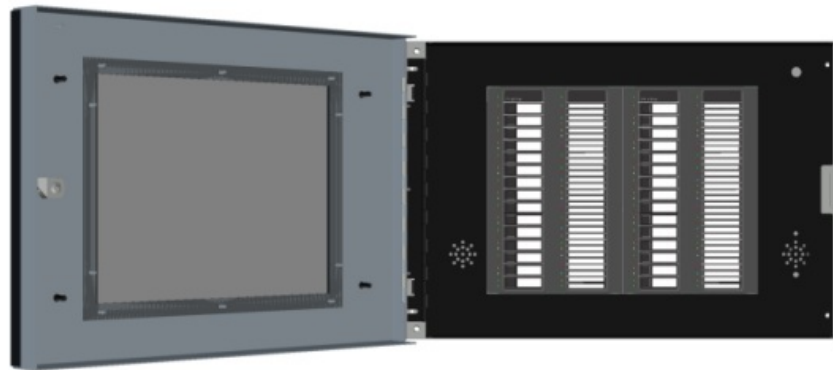
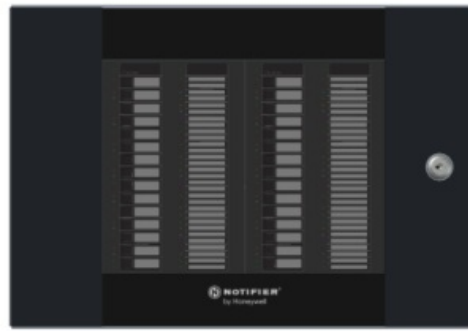
NCM-F

NCM-F provides two Multi-Mode Fiber ST ports (Tx and Rx for each port) for Standard-Speed network communications.

Each NCM-F card allows for connection to 1 network node via one NUP connector.

NOTIFIER INSPIRE Dual Annunciator Display Cabinet (ABB-2)

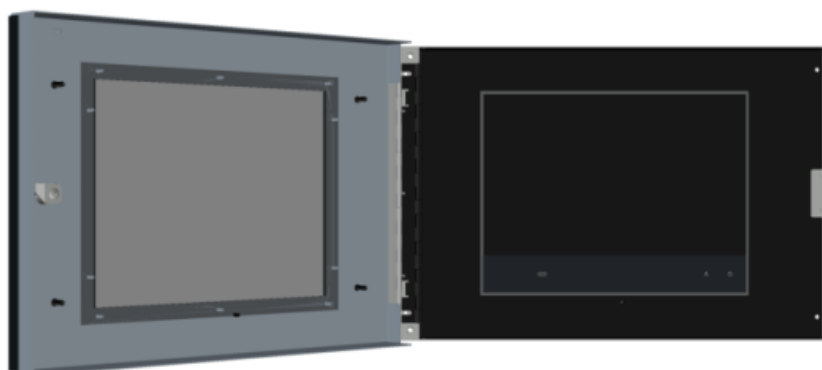
Remote ABB-2 Enclosure shown with Two ACM-30 annunciators (ordered separately)

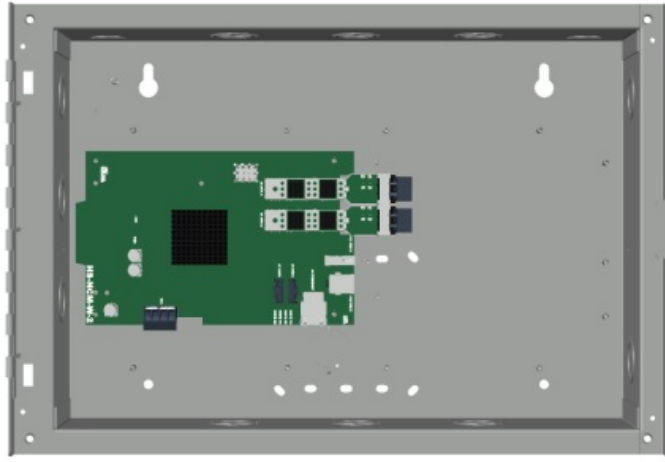


Backbox support mounting a single High-Speed Network Card or two standard Network cards

NOTIFIER INSPIRE NCD Cabinet (NBB-2)

Remote ABB-2 Enclosure shown with a NCD Display and a High-Speed Network Card (ordered separately)





Interior View (Shown with HS-NCM-W-2)

Backbox support mounting a single High-Speed Network Card or two standard Network cards

NOTIFIER INSPIRE Single Annunciator Display Cabinet (ABB-1) #1

Remote ABB-1 Enclosure with an ACM-30 annunciator (ordered separately)



Backbox support mounting a single standard Network

ONYX Remote NCD Cabinet (ABS-TD)

Remote ONYX NCD Enclosure shown with NCD display and Standard NCM-F Card (ordered separately)



Backbox support mounting a single Standard Network card only in the left position

NOTIFIER INSPIRE Remote Location Display (RLD)



NOTIFIER INSPIRE PANEL LICENSING

NOTIFIER INSPIRE N16 Panel Includes:

250 General Zones

250 Logic Zones

8 Custom Action Buttons

Flashscan SLC Protocol

Additional functionality may be added through one-time software licenses.

- N16-CAC Adds 8 Custom Action Buttons (32 maximum per N16 Panel)
- N16-CLIP Adds CLIP SLC Protocol for a single SLM-318 Card
- N16-GZN Adds 250 General Zones (2000 maximum per N16 Panel)
- N16-LGZ Adds 250 Logic Zones (2000 maximum per N16 Panel)
- N16-NWD Enables Display of Network Events on a N16 Panel for more than 2 nodes
- N16-UZC Enables Zone Coding on a N16 Panel

NCD Network Display Includes:

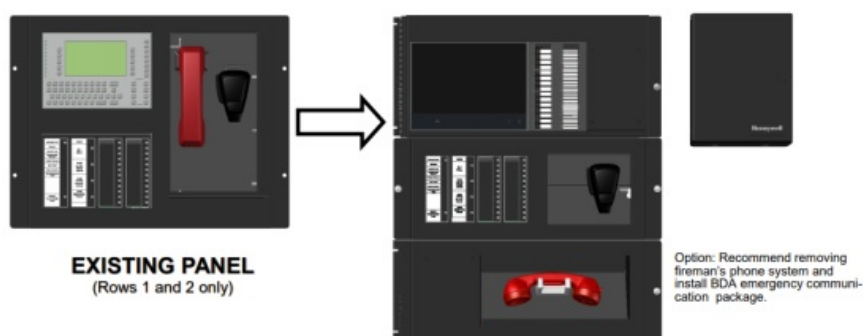
250 Logic Zones

8 Custom Action Buttons

- NCD-CAC Adds 8 Custom Action Buttons (32 maximum per NCD)
- NCD-LGZ Adds 250 Logic Zones (2000 maximum per NCD)

SPECIAL RETROFIT CONSIDERATION:

NFS2-3030 Voice retrofit where existing application includes CA-2 and DPA-2



INSPIRE Retrofit

(Requires 1 available Row)

Existing Equipment not shown

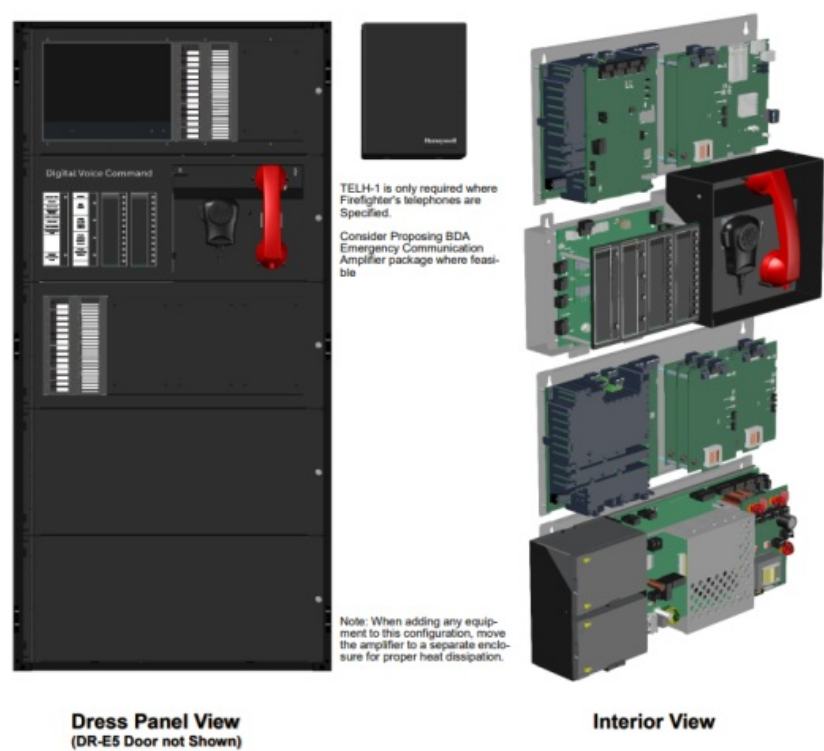
QUANTITY	PART NUMBER	DESCRIPTION
1	CA-1	CHASSIS, DVC, ONE ROW
1	CFFT-1	SINGLE NEW CHASSIS FOR MOUNTING FIREFIGHTER'S TELEPHONE. INCLUDES CFFT-1 CHASSIS, PHONE WELL, TELH-1 AND HARDWARE. ORDER DP-CFFT DRESS PLATE SEPARATELY
1	CMIC-1	CHASSIS WITH PAGING MICROPHONE WITH WELL; USED WITH CA-1
1	DPA-1	DRESS PLATE, DVC, ONE ROW

1	DP-CFFT	DRESS PLATE USED WITH CFFT-1
As Required	ABP-1	ANNUNCIATOR BLANK PLATE, FOR CAB-5
1	DP-T2A-CB4	DRESS PANEL; MOUNTS 10" TOUCHSCREEN DISPLAY AND 2 A CM-30 IN CAB-4
1	50160636-001	CLSS GATEWAY KIT. INCLUDES 30" NUP CABLE AND NOTIFIER LOCK AND KEY SET
Choose 1	CCM-ATT-HON	CLSS CELLULAR COMMUNICATION MODULE FOR ATT
	CCM-VZ-HON	CLSS CELLULAR COMMUNICATION MODULE FOR VERIZON
1	HON-CGW-MBB	CLSS GATEWAY, WITH ENCLOSURE (NOTIFIER LOCK AND CABLE KIT, 50160636-001 SOLD SEPARATELY)
As Required	ACM-30	INSPIRE SERIES ANNUNCIATOR CONTROL MODULE CONFIGURABLE FOR ACTIVATION AND INDICATION
1	CPU-16-RTO	N16X INTELLIGENT FIRE ALARM CONTROL PANEL; 10" TOUCH SCREEN DISPLAY, CPU, UNIVERSAL AC INPUT POWER SUPPLY AND SIGNALING LOOP MODULE (318 DEVICES), EXPANDABLE TO 10, CHASSIS MOUNT. MOUNTS IN CAB-4
As Required	SLM-318	SIGNALING LOOP MODULE SUPPORTS 318 DEVICES PER LOOP MODULE.

****BATTERY BOXES AND SYSTEM BATTERIES ARE NOT INCLUDED AND SHOULD BE SELECTED BASED**

Sample Configuration #1— NOTIFIER INSPIRE N16x Voice

FACU With 7 SLC Loops, 1000 General Zones, 750 Logic Zones, 50 Watts of 70Vrms Speaker Power and Backup, Multimode Fiber Network, and CLSS cellular/wireless connectivity.



Sample Configuration #1—NOTIFIER INSPIRE N16x Voice BOM

FACU With 7 SLC Loops, 1000 General Zones, 750 Logic Zones, 50 Watts of 70Vrms Speaker Power and Backup, Multimode Fiber Network, and CLSS cellular/wireless connectivity.

QU ANT ITY	PART NO	DESCRIPTION
1	SBB-E 5	CAB-5 STANDARD BACK BOX SIZE E, FIVE ROW
1	DR-E5	E SIZE DOOR, LOCK & KEYS FOR CAB-5

1	DP-T2 A	DRESS PANEL; 10" TOUCHSCREEN DISPLAY AND 2 ANNUNCIATORS FOR CAB-5
1	DPA-05	DRESS PLATE FOR C5A-M; MICROPHONE AND TELEPHONE OPENING, FOR CAB-5
1	DP-4A	DRESS PANEL; MOUNTS 4 ACM-30 ANNUNCIATORS, FOR CAB-5
2	DP-BL N	DRESS PANEL BLANK; COVERS UNUSED CABINET ROW FOR CAB-5
1	BP-5	BATTERY DRESS PANEL FOR CAB-5 SERIES, CAB-5
2	ACM-3 0	INSPIRE SERIES ANNUNCIATOR CONTROL MODULE CONFIGURABLE FOR ACTIVATION AND INDICATION
4	ABP-1	ANNUNCIATOR BLANK PLATE, FOR CAB-5
1	HS-NC M-MF	HIGH-SPEED NETWORK COMMUNICATIONS MODULE, FIBER-OPTIC CABLE INTERFACE (MULTI-MODE).
6	SLM-3 18	SIGNALING LOOP MODULE SUPPORTS 318 DEVICES PER LOOP MODULE. <i>(1 SLM-318 is included with CPU-N16LD)</i>
1	CPU-N 16LD	N16X INTELLIGENT FIRE ALARM CONTROL PANEL; 10" TOUCHSCREEN DISPLAY, CPU, UNIVERSAL AC INPUT POWER SUPPLY AND SIGNALING LOOP MODULE (318 DEVICES), EXPANDABLE TO 10, CHASSIS MOUNT. FOR CAB-5 SERIES
1	CSA-M	DVC CHASSIS, SINGLE ROW FOR MOUNTING DVC, MICROPHONE AND FIREFIGHTER'S TELEPHONE. INCLUDES: WELL, MIC-1 AND HARDWARE. ORDER TELH-1 SEPARATELY. FOR CAB-5
1	DVC-E M	DIGITAL VOICE COMMAND, EXTENDED MEMORY

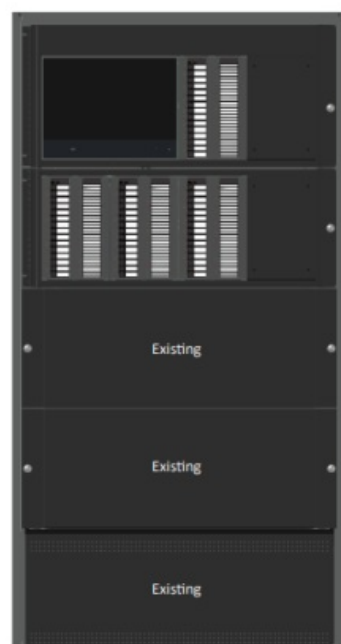
2	DS-FM	CONVERTS ONE DAX OR DAA2 DAL PORT TO MULTI-MODE FIBER <i>(One installed on DVC and one installed on DAA2-5070)</i>
1	DVC-K DB	DIGITAL VOICE COMMAND, KEYPAD
1	TELH-1	FIREFIGHTER'S TELEPHONE HANDSET ONLY
1	PMB-A UX	AUXILIARY POWER SUPPLY, 6 AMPS, UNIVERSAL AC INPUT, ON CHASSIS FOR CAB-5
1	CHS-A DP	ADAPTER PLATE TO MOUNT CAB-4 CHASSIS IN CAB-5
1	DAA2-5070	DIGITAL AMPLIFIER 50W, 70V, 120 VAC
1	BDA-70V	BACK-UP DIGITAL AMPLIFIER FOR 70 VOLT DAX OR DAA2 SERIES
1	CHS-B H1	CHASSIS, 12AH BATTERY HOLDER, FOR USE WITH DAA- NUMBERS
1	BAT-12 120-BP	FOUR (4) BAT-12120 BAT-12120 (12V, 12AH)
3	N16-G ZN	PANEL LICENSE – ADD 250 GENERAL ZONES FOR N16 PANEL [250 ZONES INCLUDED IN CPU. UP TO 2000 GENERAL ZONES PER CPU)
2	N16-L GZ	PANEL LICENSE – ADD 250 LOGIC ZONES FOR N16 PANEL [250 ZONES INCLUDED IN CPU, UP TO 2000 LOGIC ZONES PER CPU)
1	N16-N WD	PANEL LICENSE – ADD NETWORK DISPLAY MODE FOR N16 PANEL
1	501606 36-001	CLSS GATEWAY KIT. INCLUDES 30" NUP CABLE AND NOTIFIER LOCK AND KEY SET

Choose 1	CCM-A TT-HO N	CLSS CELLULAR COMMUNICATION MODULE FOR ATT
	CCM-V Z-HON	CLSS CELLULAR COMMUNICATION MODULE FOR VERIZON
1	HON-C GW-M BB	CLSS GATEWAY, WITH ENCLOSURE
1	323517 18-001	10' NUP CABLE FOR CLSS GATEWAY

****BATTERY BOX AND SYSTEM BATTERIES ARE NOT INCLUDED AND SHOULD BE SELECTED BASED**

Sample Configuration #2—Retrofit CAB4 to NOTIFIER INSPIRE N16x

FACU With 10 SLC Loops, 500 General Zones, 250 Logic Zones, 16 Custom Action buttons, and Wired IP CLSS Connectivity.



Dress Panel View
(DR-E4 Door not Shown)



Interior View
(Existing Equipment not Shown)

Note: For jurisdictions where the AHJ mandates a current PPU Label to include the INSPIRE part numbers, order a new BP2-4.

Sample Configuration #2—Retrofit to NOTIFIER INSPIRE N16x BOM

FACU With 10 SLC Loops, 500 General Zones, 250 Logic Zones, 16 Custom Action buttons, and Wired IP CLSS Connectivity.

QU ANT I- T Y	PART NO	DESCRIPTION
4	ACM-30	INSPIRE SERIES ANNUNCIATOR CONTROL MODULE CONFIGURABLE FOR ACTIVATION AND INDICATION
2	ABP-1	ANNUNCIATOR BLANK PLATE, FOR CAB-5
9	SLM-318	SIGNALING LOOP MODULE SUPPORTS 318 DEVICES PER LOOP MODULE.
1	N16-CAC	PANEL LICENSE – ADD 8 CUSTOM ACTION BUTTONS FOR N16 (8 SOFT BUTTONS INCLUDED WITH CPU, UP TO 32 BUTTONS)
1	N16-GZN	PANEL LICENSE – ADD 250 GENERAL ZONES FOR N16 PANEL (250 ZONES INCLUDED IN CPU. UP TO 2000 GENERAL ZONES PER CPU)
1	CPU-16-RTO	N16X INTELLIGENT FIRE ALARM CONTROL PANEL; 10" TOUCH SCREEN DISPLAY, CPU, UNIVERSAL AC INPUT POWER SUPPLY AND SIGNALING LOOP MODULE (318 DEVICES), EXPANDABLE TO 10, CHASSIS MOUNT. MOUNTS IN CAB-4
1	PMB-AUX-RTO	AUXILIARY POWER SUPPLY, 6 AMPS, UNIVERSAL AC INPUT, ON CHASSIS MOUNTS IN CAB-4
1	DP-T2A-CB4	DRESS PANEL; MOUNTS 10" TOUCHSCREEN DISPLAY AND 2 ACM-30 IN CAB-4
1	DP-4A-CB4	DRESS PANEL; MOUNTS 4 ACM-30 ANNUNCIATORS IN CAB-4

1	HON-C GWM B B	CLSS GATEWAY, WITH ENCLOSURE (<i>ENCLOSURE NOT USED I N THIS CONFIGURATION</i>)
1	323517 18-001	10' NUP CABLE FOR CLSS GATEWAY
1	CHS-C GW	HARDWARE FOR MOUNTING A CLSS GATEWAY ON THE CPU-N 16 OR PMB CHASSIS. WIRELESS/CELLULAR NOT SUPPORTED.

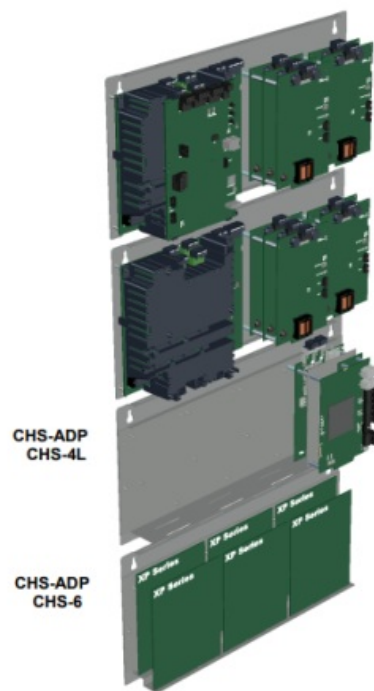
****BATTERY BOXES AND SYSTEM BATTERIES ARE NOT INCLUDED AND SHOULD BE SELECTED BASED**

Sample Configuration #3 — NOTIFIER INSPIRE N16x

FACU With 10 SLC Loops, 2000 General Zones, 2000 Logic Zones, High-Speed Wire Network, and POTS Dialer



Dress Panel View
(DR-D5 Door not Shown)



Interior View

Sample Configuration #3 — NOTIFIER INSPIRE N16x BOM

FACU With 10 SLC Loops, 2000 General Zones, 2000 Logic Zones, High-Speed Wire Network, and POTS Dialer

QU ANT I- T Y	PART NO	DESCRIPTION
4	ABP-1	ANNUNCIATOR BLANK PLATE, FOR CAB-5
1	BP-5	BATTERY DRESS PANEL FOR CAB-5 SERIES, CAB-5
1	CHS-4 L	CHASSIS, LOW PROFILE, FOR MOUNTING THE M-30, LDM. (ONLY NFS-3030/NFS-640)
1	CHS-6	CHASSIS, MOUNTS UP TO 6 XP-6 MODULES IN A BB-25 OR A ROW OF THE CAB-314 SERIES CABINET; ALSO MOUNTS ACPS-610.
2	CHS-A DP	ADAPTER PLATE TO MOUNT CAB-4 CHASSIS IN CAB-5
1	DP-4A	DRESS PANEL; MOUNTS 4 ACM-30 ANNUNCIATORS, FOR CAB-5
2	DP-BL N	DRESS PANEL BLANK; COVERS UNUSED CABINET ROW FOR CAB-5
1	DP-T2 A	DRESS PANEL; 10" TOUCHSCREEN DISPLAY AND 2 ANNUNCIATORS FOR CAB-5
1	DR-E5	E SIZE DOOR, LOCK & KEYS FOR CAB-5
1	SBB- D5	CAB-5 STANDARD BACK BOX SIZE D, FOUR ROW
2	XP10- M	XP10 TRANSPONDER MONITOR MODULE, 10 CIRCUITS CLASS A OR B.
4	XP6-M A	XP6 TRANSPONDER 2-WIRE DETECTOR MONITOR MODULE; 6 CIRCUITS CLASS A OR B.

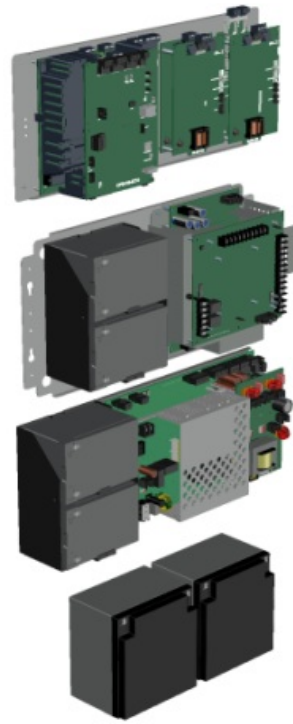
2	ACM-30	INSPIRE SERIES ANNUNCIATOR CONTROL MODULE CONFIGURABLE FOR ACTIVATION AND INDICATION
1	CPU-N16LD	N16X INTELLIGENT FIRE ALARM CONTROL PANEL; 10" TOUCHSCREEN DISPLAY, CPU, UNIVERSAL AC INPUT POWER SUPPLY AND SIGNALING LOOP MODULE (318 DEVICES), EXPANDABLE TO 10, CHASSIS MOUNT. FOR CAB-5 SERIES
1	PMB-AUX	AUXILIARY POWER SUPPLY, 6 AMPS, UNIVERSAL AC INPUT, ON CHASSIS FOR CAB-5
9	SLM-318	SIGNALING LOOP MODULE SUPPORTS 318 DEVICES PER LOOP MODULE.
7	N16-GZN	PANEL LICENSE – ADD 250 GENERAL ZONES FOR N16 PANEL [250 ZONES INCLUDED IN CPU. UP TO 2000 GENERAL ZONES PER CPU]
7	N16-LGZ	PANEL LICENSE – ADD 250 LOGIC ZONES FOR N16 PANEL [250 ZONES INCLUDED IN CPU, UP TO 2000 LOGIC ZONES PER CPU]
1	HS-NCM-W-2	HIGH-SPEED NETWORK COMMUNICATIONS MODULE, TWISTED-PAIR WIRE INTERFACE.
1	CGW-DAC-TNF	POTS Dialer

Sample Configuration #4 — NOTIFIER INSPIRE N16x DGP

EQ Series Enclosure containing No Display FACU With 3 SLC Loops, 500 General Zones, 250 Logic Zones, High -Speed Wire Network, 70V Digital Amplifier with Backup, and 12-Amp Strobe Expander



Exterior



Interior View

Sample Configuration #4 — NOTIFIER INSPIRE N16x DGP BOM

EQ Series Enclosure containing No Display FACU With 3 SLC Loops, 500 General Zones, 250 Logic Zones, HighSpeed Wire Network, 70V Digital Amplifier with Backup, and 12-Amp Strobe Expander

QUANTITY	PART NO	DESCRIPTION
1	BDA-70V	BACK-UP DIGITAL AMPLIFIER FOR 70 VOLT DAX OR DAA2 SERIES
1	CHS-BH1	CHASSIS, 12AH BATTERY HOLDER, FOR USE WITH DM- NUMBERS
1	DAA2-5070	DIGITAL AMPLIFIER 50W, 70V, 120 VAC
1	BAT-12120-BP	FOUR (4) BAT-12120 BAT-12120 (12V, 12AH)

1	BAT-1 2260- BP	TWO (2) BAT-12660 (12V, 26AH)
1	EQBB -D4	EQUIPMENT BACKBOX ASSEMBLY, FOUR TIERS, BLACK.
1	EQDR -D4	EQUIPMENT DOOR ASSEMBLY, VENTED, FOUR TIERS, BLACK.
1	CPU- 16-RT O	N16X INTELLIGENT FIRE ALARM CONTROL PANEL; 10" TOUCHS CREEN DISPLAY, CPU, UNIVERSAL AC INPUT POWER SUPPLY A ND SIGNALING LOOP MODULE (318 DEVICES), EXPANDABLE TO 10, CHASSIS MOUNT. MOUNTS IN CAB-4
2	SLM- 318	SIGNALING LOOP MODULE SUPPORTS 318 DEVICES PER LOOP MODULE.
1	N16- GZN	PANEL LICENSE – ADD 250 GENERAL ZONES FOR N16 PANEL [2 50 ZONES INCLUDED IN CPU. UP TO 2000 GENERAL ZONES PER CPU]
1	HS-N CM-W -2	HIGH-SPEED NETWORK COMMUNICATIONS MODULE, TWISTED- PAIR WIRE INTERFACE.
1	HPFF 12CM	12A NAC EXPANDER, CAB-4 CHASSIS-MOUNT, INCLUDES BATTE RY HOLDER FOR 12AH BATTERIES

**BATTERY BOX AND SYSTEM BATTERIES ARE NOT INCLUDED AND SHOULD BE
SELECTED BASED



©2022 by NOTIFIER by Honeywell Inc. All rights reserved.

Documents / Resources

	NOTIFIER INSPIRE N16e Control Panel [pdf] User Guide INSPIRE N16e Control Panel, INSPIRE N16e, Control Panel, Panel
---	--

References

- [User Manual](#)

Control Panel, INSPIRE N16e, INSPIRE N16e Control Panel, Notifier, NOTIFIER Panel

Leave a comment

Your email address will not be published. Required fields are marked *

Comment *

Name

Email

Website

☐ Save my name, email, and website in this browser for the next time I comment.

Post Comment

Search:

e.g. whirlpool wrf535swhz

Search

[Manuals+](#) | [Upload](#) | [Deep Search](#) | [Privacy Policy](#) | [@manuals.plus](#) | [YouTube](#)

This website is an independent publication and is neither affiliated with nor endorsed by any of the trademark owners. The "Bluetooth®" word mark and logos are registered trademarks owned by Bluetooth SIG, Inc. The "Wi-Fi®" word mark and logos are registered trademarks owned by the Wi-Fi Alliance. Any use of these marks on this website does not imply any affiliation with or endorsement.