



NOTIFIER FZM-1A Interface Module Installation Guide

[Home](#) » [NOTIFIER](#) » NOTIFIER FZM-1A Interface Module Installation Guide 

Contents

- [1 NOTIFIER FZM-1A Interface Module](#)
- [2 Specifications](#)
- [3 INSTALLATION AND MAINTENANCE INSTRUCTIONS](#)
 - [3.1 FZM-1A Interface Module](#)
- [4 BEFORE INSTALLING](#)
- [5 Documents / Resources](#)
 - [5.1 References](#)
- [6 Related Posts](#)



NOTIFIER FZM-1A Interface Module



Specifications

- **Normal Operating Voltage:** 15 to 32 VDC

- **Maximum Current Draw:** 5.1 mA (LED on)
- **Average Operating Current:** **EOL Resistance:** 3.9K Ohms
- **Maximum IDC Wiring Resistance:** 25 Ohms IDC Supply Voltage (between Terminals T10 and T11)
- **Regulated DC Voltage:** 24 VDC power limited
- **Ripple Voltage:** 0.1 Volts RMS maximum
- **Alarm Current:** 90 mA per module
- **Standby Current:** 13 mA Maximum @24 VDC
- **Temperature Range**
- **Humidity:** 10% to 93% Non-condensing
- **Dimensions**
- **Accessories:** SMB500 Electrical Box

INSTALLATION AND MAINTENANCE INSTRUCTIONS

FZM-1A Interface Module

SPECIFICATIONS

- **Normal Operating Voltage:** 15 to 32 VDC
- **Maximum Current Draw:** 5.1 mA (LED on)
- **Average Operating Current:** 270 μ A (LED flashing)
- **EOL Resistance:** 3.9K Ohms
- **Maximum IDC Wiring Resistance:** 25 Ohms
- IDC Supply Voltage (between Terminals T10 and T11)
- **Regulated DC Voltage:** 24 VDC power limited
- **Ripple Voltage:** 0.1 Volts RMS maximum
- **Alarm Current:** 90 mA per module
- **Standby Current:** 13 mA Maximum @24 VDC
- **Temperature Range:** 32°F to 120°F (0°C to 49°C)
- **Humidity:** 10% to 93% Non-condensing
- **Dimensions:** 4.5" H \times 4" W \times 1.25" D (Mounts to a 4" square by 2.125" deep box.)
- **Accessories:** SMB500 Electrical Box

BEFORE INSTALLING

- This information is included as a quick reference installation guide. Refer to the control panel installation manual for detailed system information. If the modules will be installed in an existing operational system, inform the operator and local authority that the system will be temporarily out of service. Disconnect power to the control panel before installing the modules.

NOTICE: This manual should be left with the owner/user of this equipment.

GENERAL DESCRIPTION

- The FZM-1A Interface Module is intended for use in intelligent, two-wire systems, where the individual address of each module is selected using the built-in rotary switches. This module allows intelligent panels to interface and monitor two-wire conventional smoke detectors. It transmits the status (normal, open, or alarm) of one full zone of conventional detectors back to the control panel. All two-wire detectors being monitored must be ULC compatible with this module. The FZM-1A has a panel controlled LED indicator. FZM-1A is capable of handling more than one detector in alarm condition.

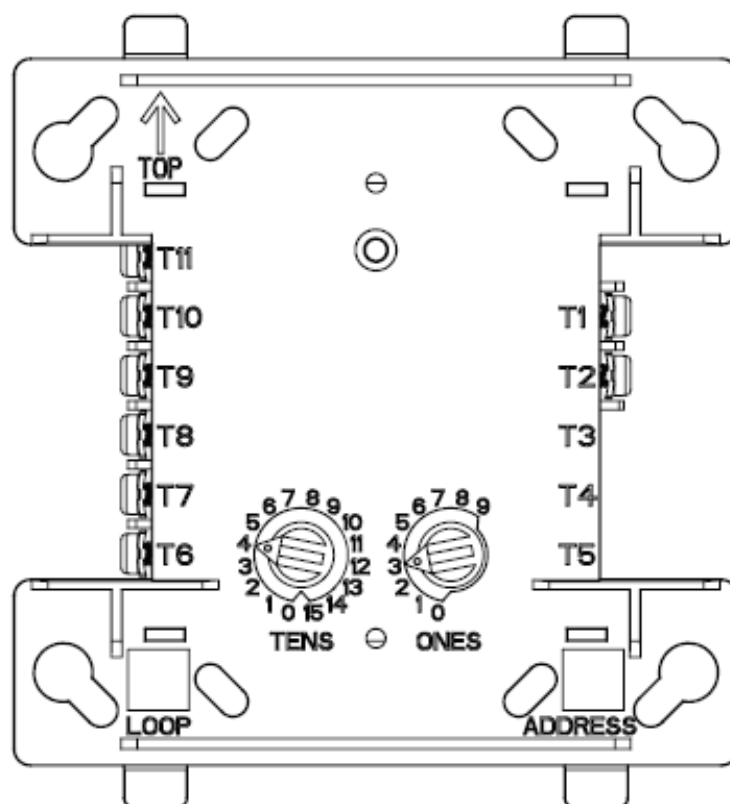
COMPATIBILITY REQUIREMENTS

To ensure proper operation, this module shall be connected to a compatible Notifies system control panel only (list available from Notified).

MOUNTING

- The FZM-1A mounts directly to 4-inch square electrical boxes. (See Figure 2.) The box must have a minimum depth of 2.125 inches. Surface mounted electrical boxes (SMB500) are available from Notified.

1. FIGURE 1. CONTROLS AND INDICATORS

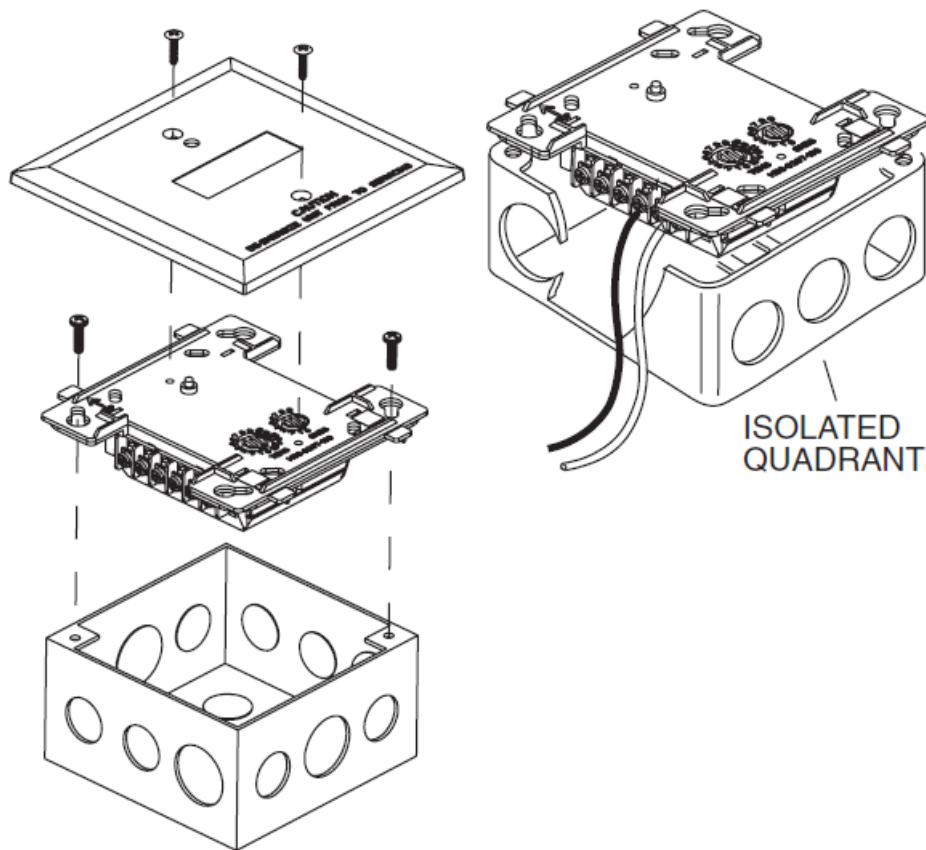


WIRING

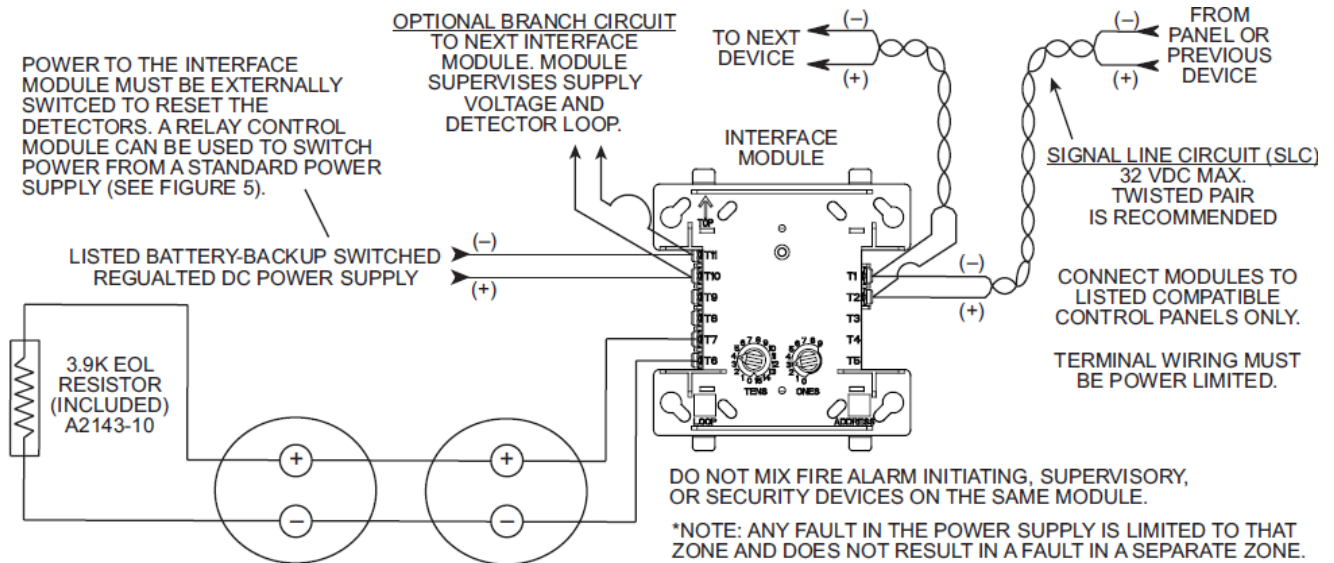
NOTE: All wiring must conform to applicable local codes, ordinances, and regulations. This module is intended for power-limited wiring only.

1. Install module wiring in accordance with the job drawings and appropriate wiring diagrams.
2. Set the address on the module per job drawings.
3. Secure module to electrical box supplied by installer. (See Figure 2.)

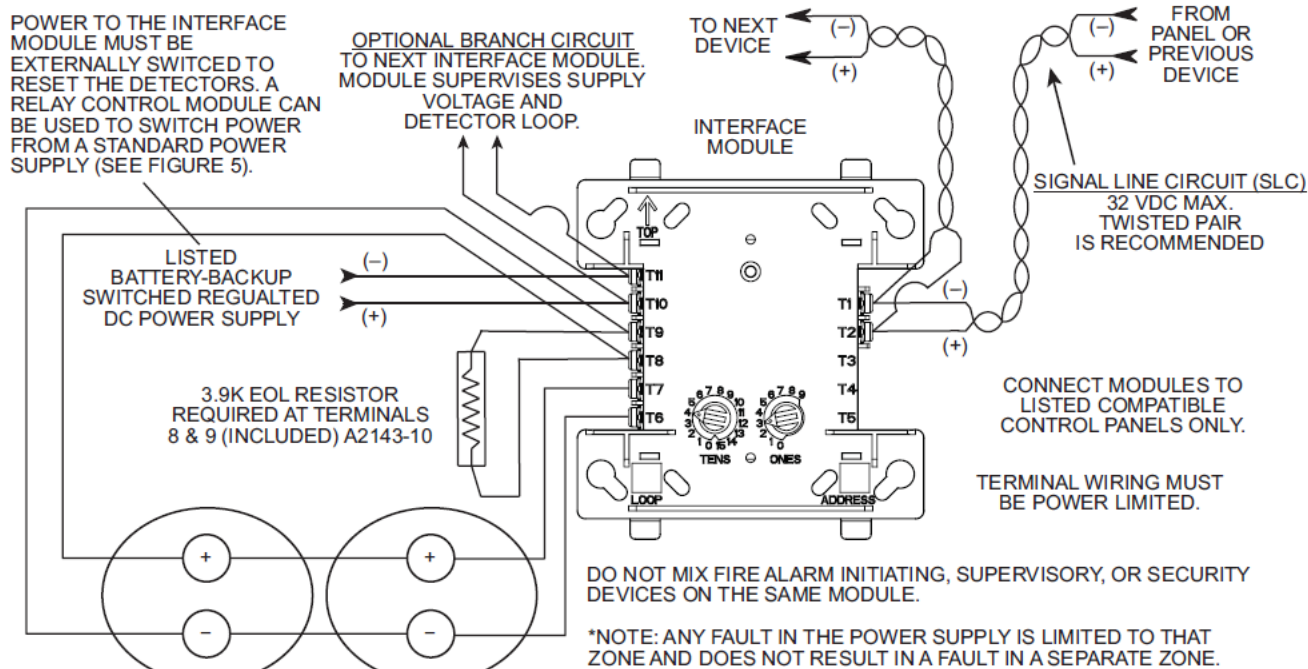
2. FIGURE 2. MODULE MOUNTING



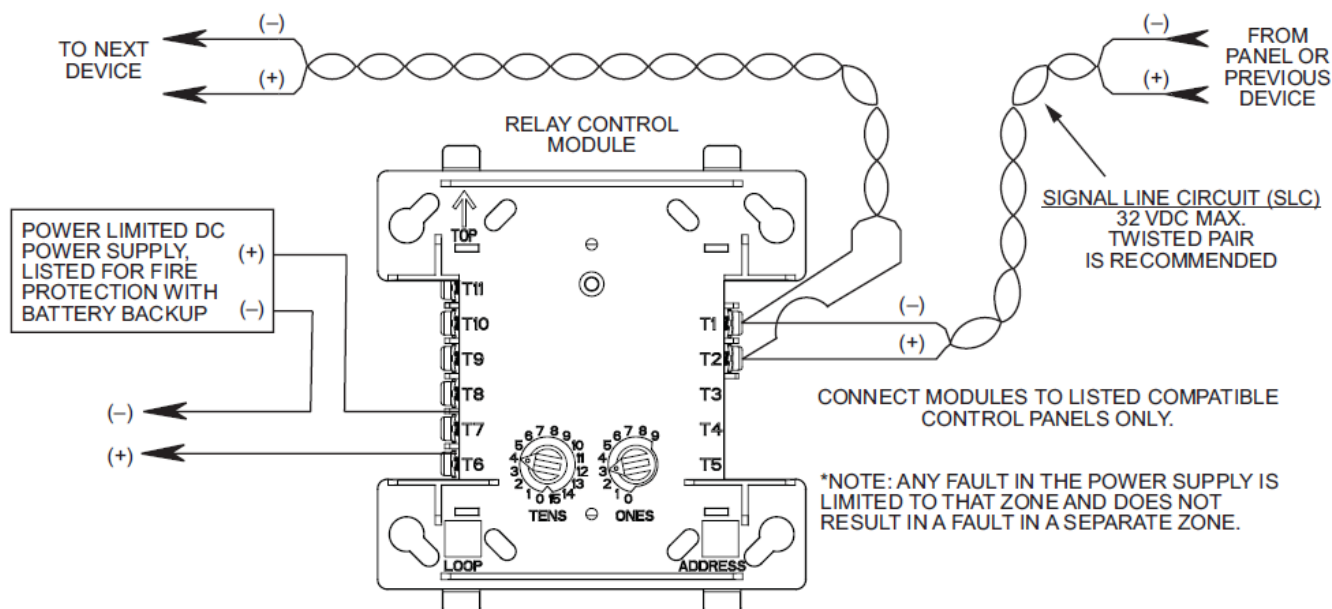
3. **FIGURE 3. INTERFACE TWO-WIRE CONVENTIONAL DETECTORS, NFPA CLASS B**

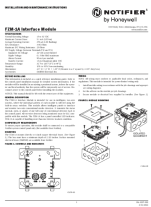


4. **FIGURE 4. INTERFACE TWO-WIRE CONVENTIONAL DETECTORS, NFPA CLASS A**



5. FIGURE 5. RELAY CONTROL MODULE USED TO DISCONNECT A POWER SUPPLY





[NOTIFIER FZM-1A Interface Module](#) [pdf] Installation Guide
FZM-1A, FZM-1A Interface Module, Interface Module, Module

References

- [NOTIFIER Home \(USA\) | NOTIFIER by Honeywell | Engineered Fire Alarm System.](#)
- [User Manual](#)