



NOTIFIER AFP1010 Fire Alarm Control Panel Owner's Manual

[Home](#) » [NOTIFIER](#) » NOTIFIER AFP1010 Fire Alarm Control Panel Owner's Manual 



NOTIFIER®

A Pittway Company

AM2020 and AFP1010 Fire Alarm Control Panel

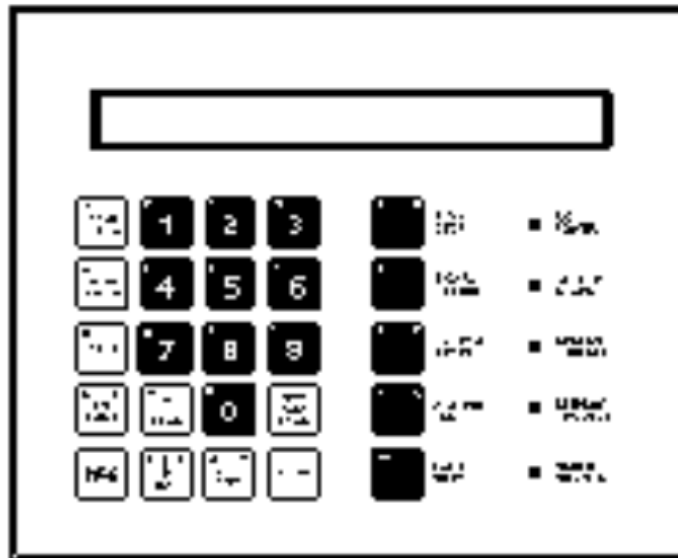
Operator's Instructions

**Frame and mount these Operator's Instructions
adjacent to the AM2020 for ready reference.**

Contents

- [1 The Display Interface Assembly \(DIA-1/DIA-2\)](#)
- [2 ACM-16AT and ACM-32A Annunciators](#)
- [3 AMG-1 Audio Message Generator](#)
- [4 ATG-2 Audio Tone Generator](#)
- [5 FFT-7 Fire Fighters Telephone](#)
- [6 FFT-7S Fire Fighters Telephone](#)
- [7 Documents / Resources](#)
 - [7.1 References](#)
- [8 Related Posts](#)

The Display Interface Assembly (DIA-1/DIA-2)



A.C. Power: A green LED will illuminate to indicate that the system is operating from the primary power supply.

System Alarm: A red LED will flash to indicate that the panel has detected at least one alarm condition in the system. The red LED will light steadily when all alarms have been acknowledged. The panel display will provide detailed information on any alarms received.

System Trouble: A yellow LED will flash to indicate any unacknowledged change of status in the system. The panel display will provide detailed information on the first change of status received. After all change of status conditions have been acknowledged, and while at least one trouble condition still exists, the SYSTEM TROUBLE LED will illuminate steadily.

Display Trouble: A yellow LED will illuminate when panel has detected a trouble condition in the panels display assembly.

Signal Silence: A yellow LED will illuminate steadily when all control modules in the system which can be silenced have been silenced. A flashing yellow LED indicates a partial signal silence condition (some of the control modules that can be silenced have been silenced).

Piezo Sounder: The local panel piezo sounder provides an audible indication of the system alarm or trouble conditions. The sounder will pulse when the system is in alarm, and will sound steadily when the system is in trouble. The sounder is silenced when all conditions have been acknowledged. If the sounder sounds steadily, and it cannot be silenced by the acknowledgement of all system alarm/trouble conditions, CALL YOUR SERVICE REPRESENTATIVE IMMEDIATELY. This sounder will also pulse momentarily whenever a keypad key is depressed.

ACK/STEP: This key is used to acknowledge system alarm or trouble conditions. When depressed, the operator acknowledges the new status of the device indicated on the display. Depression of this key will also step the display to the next device in alarm or trouble. After all such system alarm and trouble conditions have been acknowledged, the ACK/STEP switch may be used to step the display through the existing system alarm and trouble conditions.

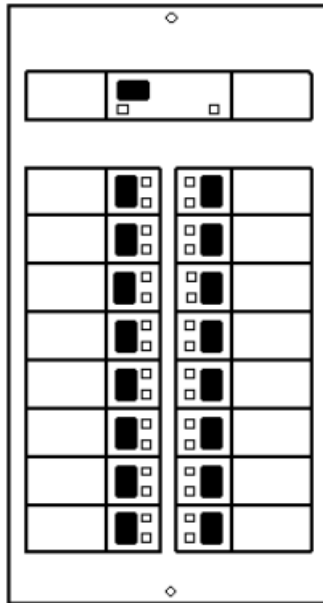
SIGNAL SILENCE: This key will deactivate all activated control modules that have been programmed to permit signal silencing.

SYSTEM RESET: This key is used to clear all system alarm and trouble conditions. If an alarm or trouble condition still exists after SYSTEM RESET, that alarm/trouble condition will resound.

SYSTEM TEST: This key is used to automatically perform a test of all intelligent detectors in the system. Results of the system detector test are then indicated on the panel's display monitor.

LAMP TEST: This key is used to perform a test of LEDs on the control panel and to test the LCD display. The test will illuminate the panel LEDs in sequence for a timed period and flash the LCD display. When the test has been completed, the panel LEDs and the LCD will return to their prior states.

ACM-16AT and ACM-32A Annunciators



System Trouble: This yellow LED illuminates to indicate a trouble in the AM2020 system.

On Line: This green LED flashes to show that the annunciator is communicating with the AM2020.

ACKNOWLEDGE The Local Silence/Acknowledge Switch lights all the LEDs on the ACM-16AT and acknowledges all status changes for both the annunciator and the expanders. Flashing LEDs on the annunciator will latch on solid and the piezo sounder will be silenced. **NOTE:**

Point LEDs: The red LED associated with each point will flash or illuminate steadily to indicate activation of that point (alarm or energization). The yellow LED associated with each annunciator point will flash or illuminate steadily to indicate a trouble condition on that point (ACM-16AT or AEM-16AT only).

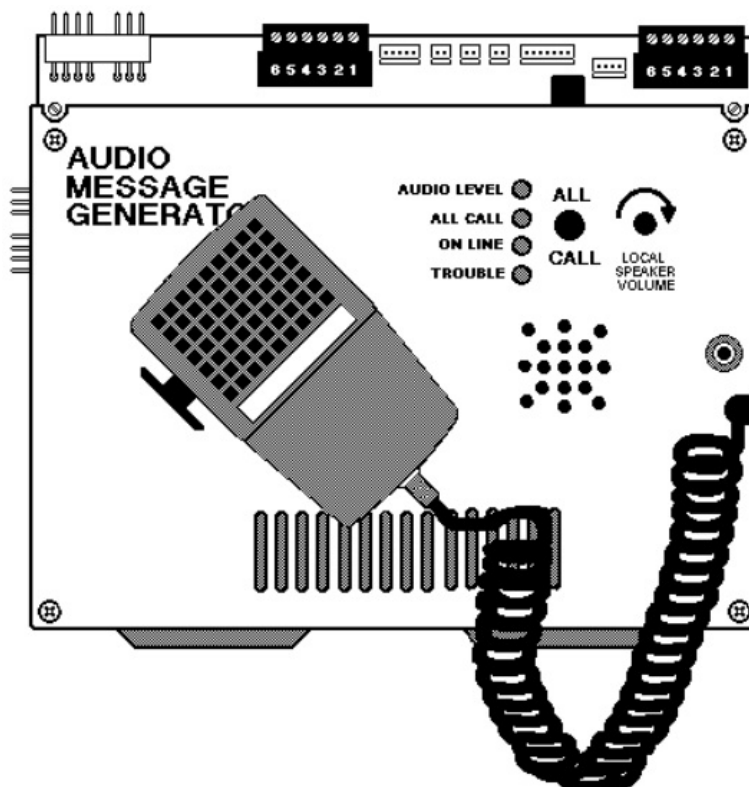
Point Control Switches: (ACM-16AT, AEM-16AT only)

Input circuits: The control switch serves as an Acknowledge for this point. Pressing the control switch after the onset of a trouble condition will cause the flashing yellow trouble LED to illuminate steadily.

Output circuits: The control switch does not serve as an Acknowledge for this point. Pressing the control switch toggles the state of the output circuit (if the circuit is ON, pressing the switch turns the circuit OFF and vice versa).

Software Zones: The control switch serves as an Acknowledge for the software zone.

AMG-1 Audio Message Generator



Audio Level: This green LED is illuminated when the audio level is correct. When paging, talk loudly enough to cause this LED to illuminate. If the AUDIO LEVEL LED is allowed to remain off for 30 seconds a system trouble will result.

All Call: This green LED toggles on and off with each depression of the ALL CALL SWITCH.

On Line: This green LED indicator is normally illuminated to show that the AM2020 is communicating with the Audio Message Generator.

Trouble: This yellow LED illuminates to indicate the presence of a trouble in local audio subsystem equipment (AMG, AA-30, FFT-7).

ALL CALL SWITCH: The All Call Switch, when pressed, can be used to activate all speaker circuits or a specific programmed group of speakers. These speaker circuits will deactivate when the All Call Switch is pressed again (toggle function), providing an alarm is not present. If an alarm is present, the speaker circuit will remain activated until manually turned off or until the system is reset. For dual-channel applications, either All CALL switch can be pushed.

SPEAKER VOLUME: The Local Speaker Volume control adjusts the volume of the speaker located on the AMG. It will not affect the volume of the speakers installed throughout the building. If necessary, turn the volume down to prevent feedback during paging.

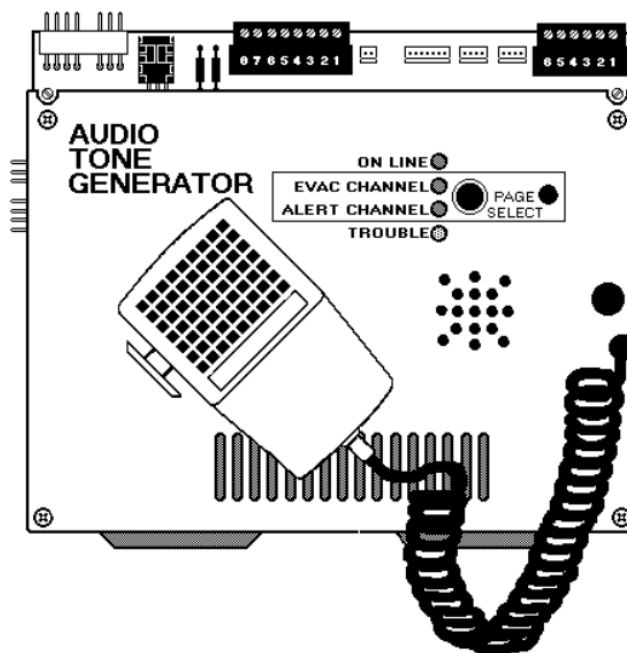
MICROPHONE: The microphone is used for paging. To page, select the speaker circuit(s) that you wish to page through by using the control switches on ACM-16AT Annunciators or by using the All Call Switch. Depress switch on side of microphone and speak into the microphone. Talk loudly enough to cause the green Audio Level LED to illuminate.

Speaker Circuit Select (ACM-16AT only): To turn a speaker circuit ON, press the control switch on the annunciator point mapped to that speaker circuit. The red LED on the point selected will illuminate. The control switch toggles the state of its circuit. If the speaker circuit has been previously activated automatically by the AM2020, pushing the control switch will cause the yellow LED on the annunciator point and the AM2020's Signal Silence LED to flash, indicating that a partial silence has been effected.

Tone/Message Select: To select an audio output function (voice message or audio tone), press the control switch on the annunciator. Note: An active audio function may have to be de-activated before selection of the next function.

Dual-Channel Select (ACM-16AT only): To select a channel, press the control switch on the annunciator point mapped to the desired channel. The RED LED on that point will illuminate. The control switch toggles the selection of the channel. Channels must be selected for each speaker zone in a dualchannel system.

ATG-2 Audio Tone Generator



The ATG-2 provides user-selected tones for single- or dual-channel output. The ATG-2 generates either a slow whoop, Hi/Lo or steady tone on the primary (EVAC) channel. In dual-channel operation, the ATG-2 also generates either a chime or a 20 pulses-per-minute tone on the secondary (ALERT) channel.

On Line: This green LED indicator is normally illuminated to show that the AM2020 is communicating with the Audio Tone Generator.

Evac Channel: This green LED illuminates to show that paging will occur over the EVAC channel.

Alert Channel: This green LED illuminates to show that paging will occur over the ALERT channel.

Trouble: This yellow LED illuminates to indicate the presence of a trouble in local audio subsystem equipment (AMG, AA-30, FFT-7).

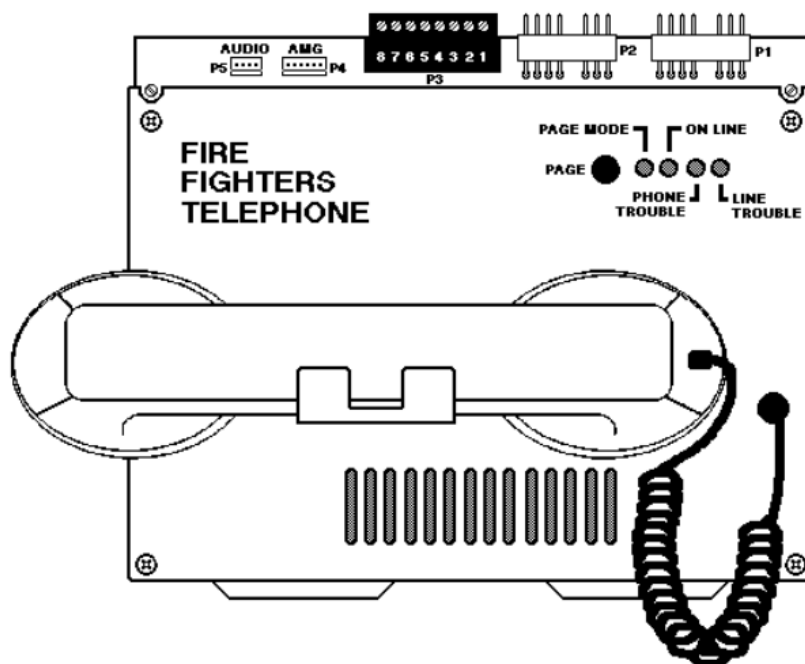
PAGE SELECT The Page Select Switch, when pressed, is

SWITCH: used to choose between EVAC and ALERT channels for paging. The respective LED will illuminate when that channel has been selected.

MICROPHONE: The microphone is used for paging. To page, select the desired channel by pressing the PAGE SELECT SWITCH until the respective LED illuminates.

Depress switch on side of microphone and speak into the microphone.

FFT-7 Fire Fighters Telephone



Page Mode: This green LED illuminates when the PAGE MODE SWITCH is depressed.

On Line: This green LED illuminates to show that the AM2020 is powering the Fire Fighters Telephone system.

Phone Trouble: This yellow LED illuminates to indicate a trouble in the Fire Fighters Master Telephone (FFT-7) Circuit.

Line Trouble: This yellow LED illuminates to indicate a trouble in the Fire Fighters Telephone wiring (wiring between the FFT-7 and other elements in the audio evacuation system (XP Transponder modules)).

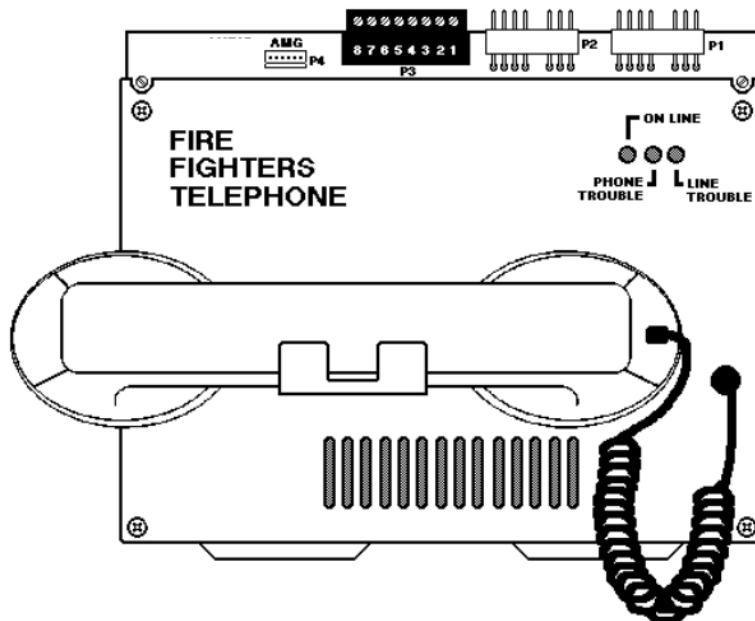
Page Switch: The Page Switch allows a firefighter to page from a Fire Fighters Telephone. To page, select the speaker circuit(s) that will carry the page by using the control switches on ACM-16AT annunciators, or by using the All Call Switch on the AMG-1 next to the FFT-7. Depress the Page Switch and talk loudly enough to cause the green Audio Level LED on the AMG-1 to illuminate.

Incoming Calls: The yellow LED on an annunciator point mapped to the telephone circuit will flash, the red LED will illuminate steadily, the piezo will beep. Do not press the Acknowledge Switch in this case! To answer the incoming call, pick up the master handset and press the control switch next to these annunciator points. Wait until the caller has been connected (audible click in the receiver). To disconnect the call, momentarily press the telephone circuit annunciator point control switch again.

Remote Phone Paging: Answer the incoming call from the telephone circuit as described above. Press the PAGE button on the AMG-1, illuminating the yellow Page Mode LED. Select speaker circuits by pressing control switches on the annunciator or by depression of the ALL CALL switch on the AMG-1 next to the FFT-7. Any fireman connected via the telephone circuit annunciator control switch can page through the selected speaker circuits.

FFT-7S Fire Fighters Telephone

(stand-alone version of the FFT-7)



On Line: This green LED illuminates to show that the AM2020 is powering the Fire Fighters Telephone system.

Phone Trouble: This yellow LED illuminates to indicate a trouble in the Fire Fighters Master Telephone (FFT-7S) Circuit.

Line Trouble: This yellow LED illuminates to indicate a trouble in the Fire Fighters Telephone wiring (wiring between the FFT-7S and other elements in the audio evacuation system, such as XP Transponder modules).

Incoming Calls: The yellow LED on an annunciator point mapped to the telephone circuit will flash, the red LED will illuminate steadily, the piezo will beep. Do not press the Acknowledge Switch in this case! To answer the incoming call, pick up the master handset and press the control switch next to this annunciator point(s). Wait until the caller has been connected (audible click in the receiver). To disconnect the call, momentarily press the telephone circuit annunciator point control switch again.

Enter the information or place your NOTIFIER representative

In the event of trouble, contact the local NOTIFIER Service Representative.

Name: _____

Company: _____

Address: _____

Telephone Number: _____



Documents / Resources

	<p>NOTIFIER AFP1010 Fire Alarm Control Panel [pdf] Owner's Manual AM2020, AFP1010, AFP1010 Fire Alarm Control Panel, Fire Alarm Control Panel, Alarm Control Panel, Control Panel</p>
--	---

References

- [Fire Alarm Resources | Download fire alarm documents](#)