



# NORTHCLIFFE RPIR360 PIR Sensor Pir Detectors Instruction Manual

[Home](#) » [NORTHCLIFFE](#) » NORTHCLIFFE RPIR360 PIR Sensor Pir Detectors Instruction Manual 

## Contents

- [1 NORTHCLIFFE RPIR360 PIR Sensor Pir Detectors](#)
- [2 INSTRUCTION FOR INSTALLATION AND USE](#)
- [3 SPECIFICATION](#)
- [4 Troubleshooting](#)
- [5 Documents / Resources](#)

**NORTHCLIFFE**  
MAKING LIFE BRIGHTER

**NORTHCLIFFE RPIR360 PIR Sensor Pir Detectors**



## INSRUCTION FOR INSTALLATION AND USE

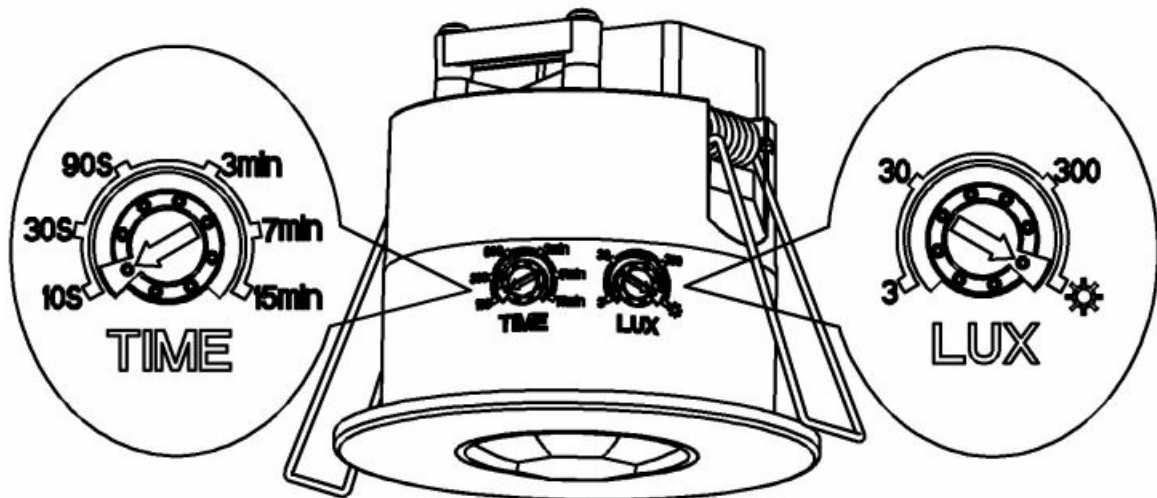


## SPECIFICATION

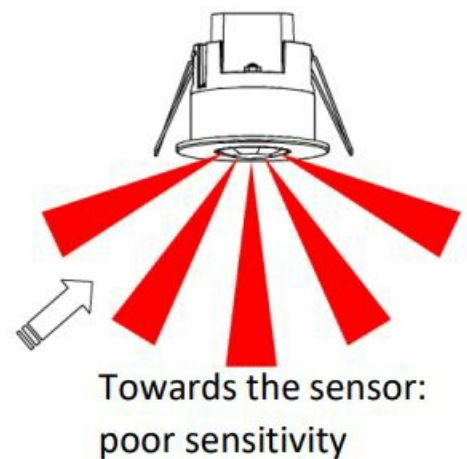
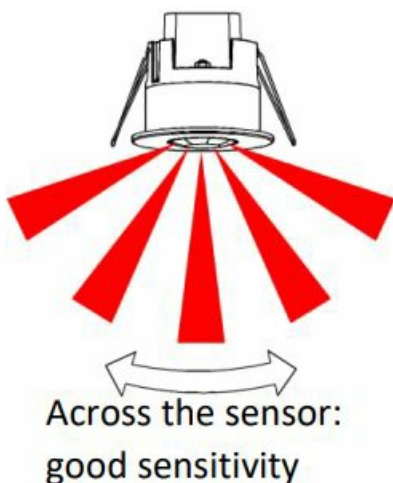
- Recessed PIR sensor
- **Body:** polycarbonate, white
- **Detection range:** 360°
- **Detection diameter:** 8m max (<24 °C)
- **Installation height:** 2.2-4.0m
- **Mains voltage:** 220-240V, 50-60Hz
- **Switching load:** 600W (Energy saving lamp & LED lamp)
- **Power consumption:** 0.5W
- **Dimensions:** Ø76\*68.4mm
- **Switching cycles:** 100000
- **Integrated daylight sensor. Daylight Threshold:** 3-2000lux (adjustable)
- **Hold time:** 10s-15min (adjustable)
- **Movement speed detection:** 0.6-1.5m/s
- **Operating temperature range, °C:** -20..+40
- **Protection class IEC:** II
- **Ingress protection:** IP65

## Function

- LUX – Set the daylight threshold level according to the environment. The light will not turn on if the ambient lux level exceeds the daylight threshold preset. Select the “☀” position for the sensor to work in daylight.
- TIME – Select the required hold time for the light on-time after presence detection. When the sensor receives a second signal, it will restart the hold time.

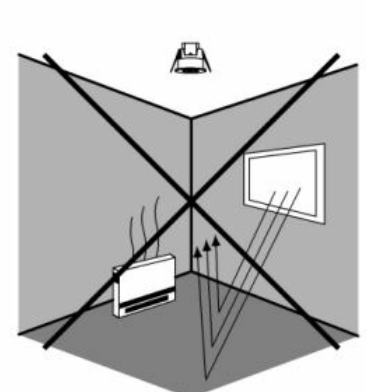
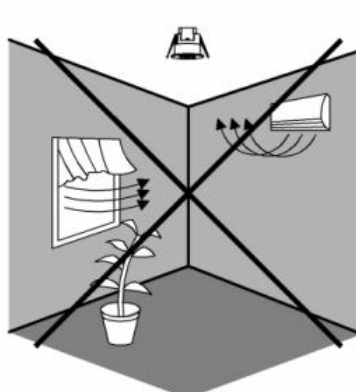
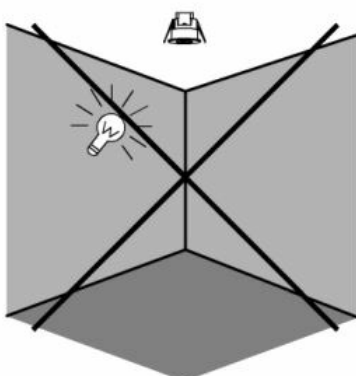


#### SENSOR R RPIR360 D8/4 W



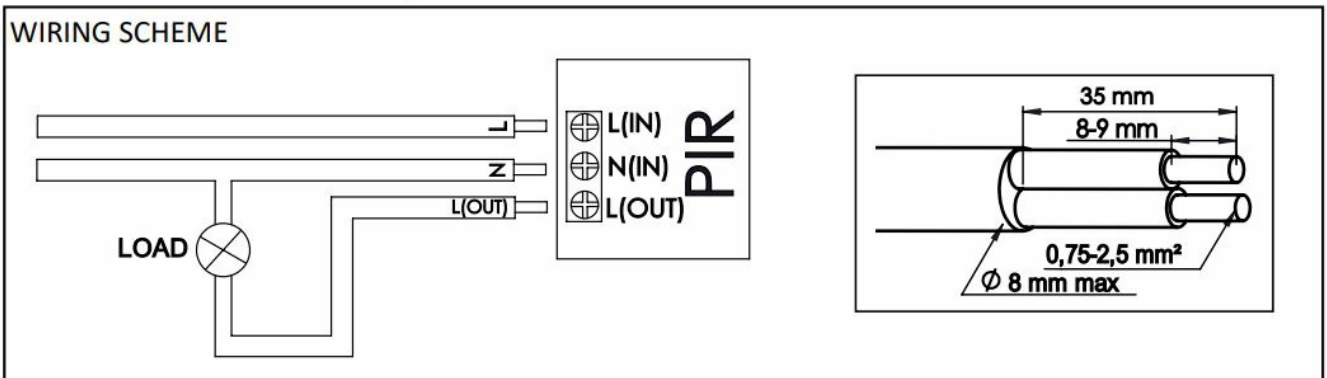
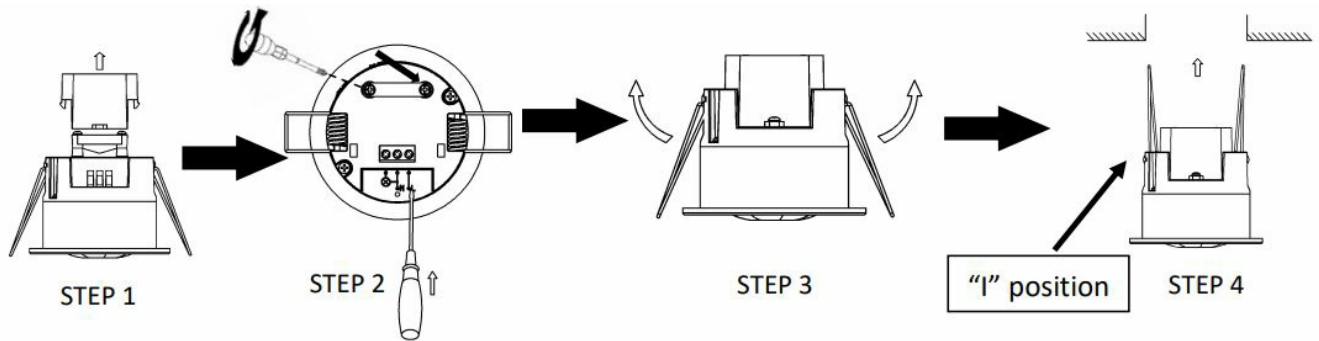
#### Installation advice

- Avoid pointing the detector towards objects with highly reflective surfaces, such as mirrors etc.
- Avoid mounting the detector near heat sources, such as heating vents, air conditioning units, light etc.
- Avoid pointing the detector towards objects that may move in the wind, such as curtains, tall plants etc.



## Connection

- Take off the cover which is at the back side of the sensor;
- Unscrew the strain relief, and connect the mains and load wires according to the wiring scheme;
- Screw the strain relief and put the cover back on the sensor;
- Fold the metal spring upwards to “I” position, and put the sensor into to the hole or installation box, then release the spring and the sensor will settle down into position;
- After the installation is finished you can switch on the power and test the functionality of the sensor.



## Test:

- Turn the TIME knob counterclockwise on the minimum (10s). Turn the LUX knob clockwise on the maximum “☀”.
- Switch on the power; the sensor and its connected lamp will have no signal at the beginning. After a warm-up period of 30 seconds, the sensor is ready for operation. If the sensor detects a movement the luminaire will turn on. If there is no movement detected, the luminaire should turn off within 10±3 seconds.
- Turn LUX knob counterclockwise on the minimum (3). If the ambient light is higher than 3lux, the sensor will not turn on the luminaire. If the ambient light is less than 3lux, the luminaire will be turned on.
- **Note:** when testing the sensor in daylight, turn the LUX knob to the “☀” position, otherwise the luminaire will not turn on! If the luminaire's power is more than 60W, of the distance between the luminaire and the sensor should be at least 60cm.

## Troubleshooting

- **The load does not work:**
  - Please check if the mains and load wires are connected properly;
  - Please check if the power of the load does not exceed the maximum limit;
  - Please check if the ambient light settings suit the installation location.

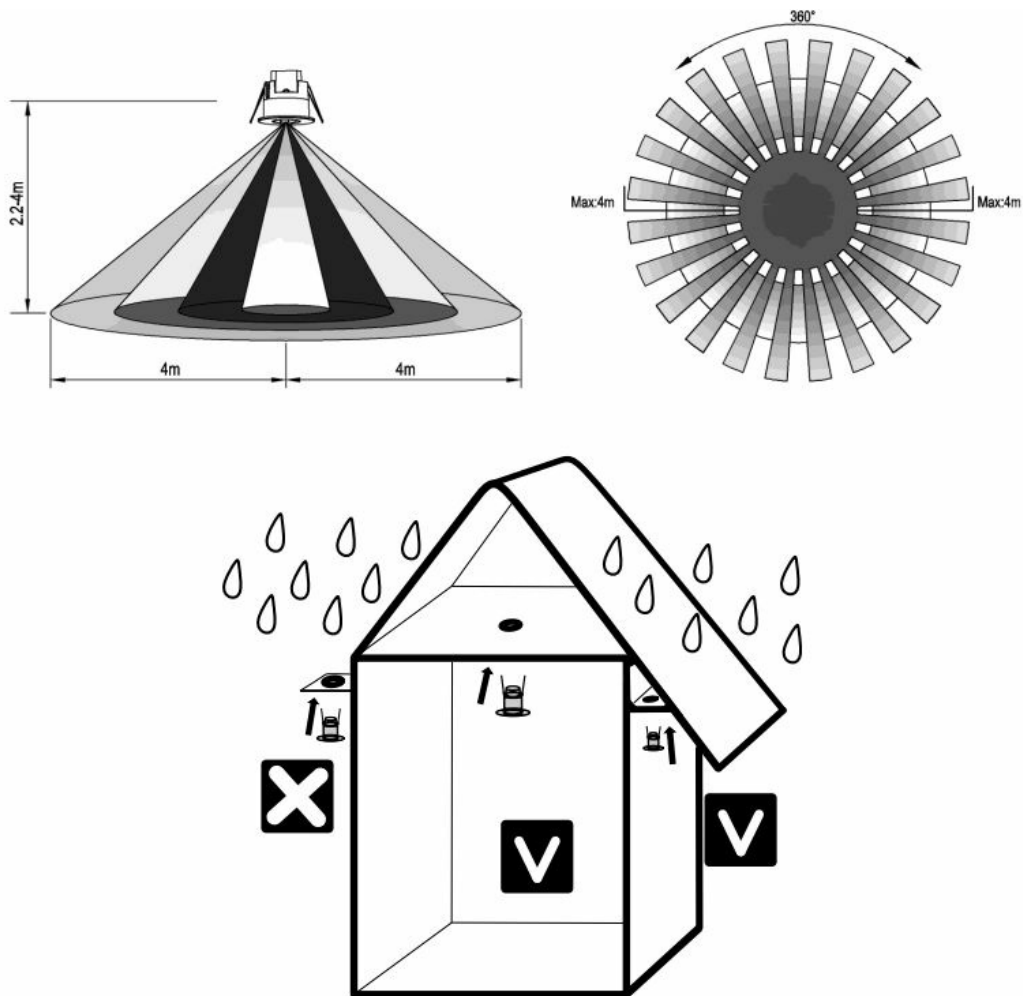
- **The sensitivity is poor:**

- Please check if there are no obstacles between the sensor and the moving object;
- Please check if the ambient temperature does not exceed the limits;
- Please check if the moving object is in the sensor's detection field;
- Please check if the installation height corresponds to the height required in the instruction;
- Please check if the object is moving towards or across the sensor's field of view and change the installation location if necessary.

- **The sensor can not shut off the load automatically:**

- Please check if there are no moving objects in the sensor's field of view;
- Please check the settings of the TIME knob;
- Please check if the power of the load does not exceed the maximum limit.

## Coverage area



## CAUTION! RISK OF ELECTRIC SHOCK

Installation can only be performed by an authorized electrician. Switch off the electricity supply before carrying out any work. Luminaire must be installed in compliance with all safety requirements. Attention! The exact model of the fixture marked on a label inside it.

- IMPORTANT INFORMATION FOR CORRECT DISPOSAL OF THE PRODUCT IN ACCORDANCE WITH EC DIRECTIVE 2002/96/EC.

- [www.northcliffe.org](http://www.northcliffe.org)

[illegible]

Manuals+,