



NORTH SPORE Repeat Cycle Timer Instructions

[Home](#) » [NORTH SPORE](#) » NORTH SPORE Repeat Cycle Timer Instructions 



Repeat Cycle Timer Instructions- Side A

Contents

- [1 PRODUCT OVERVIEW:](#)
- [2 TECHNICAL SPECIFICATIONS:](#)
- [3 OPERATION INSTRUCTIONS:](#)
- [4 Documents / Resources](#)

PRODUCT OVERVIEW:

Quality product at an affordable price. The Spartan Series repeat cycle timer is perfect for £02 control, pumps, fans and other 120 Volt appliances. Features a 5 second to 30 'minute 'ON" time and 5 second to 60 minute "OFF" time and a built in photocell for day or night use. Simple to operate and easy to use. Timer is set in 24 Hour Control Mode. Refer to side B to set in Day or Night mode.

TECHNICAL SPECIFICATIONS:

- Voltage: 125 Volt
- Hertz: 60Kz
- Max Operating Amps: 15 Amps Resistive Load
- Operating temperature: 32°F – 122°F (0°-50°)

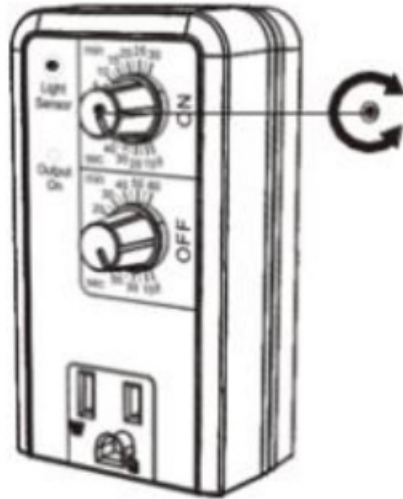
Includes 1 year repair or replacement warranty. For technical assistance call 888-808-4826 from Mon-Fri 8 AM-5 PM PST. Go to www.titancontrols.net for more information.

OPERATION INSTRUCTIONS:

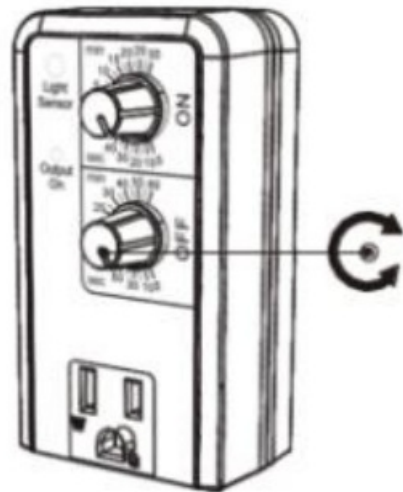
Step 1

Setting 'ON' & 'OFF' times for repeat cycle timer.

A. Rotate knob to set 'ON' time.

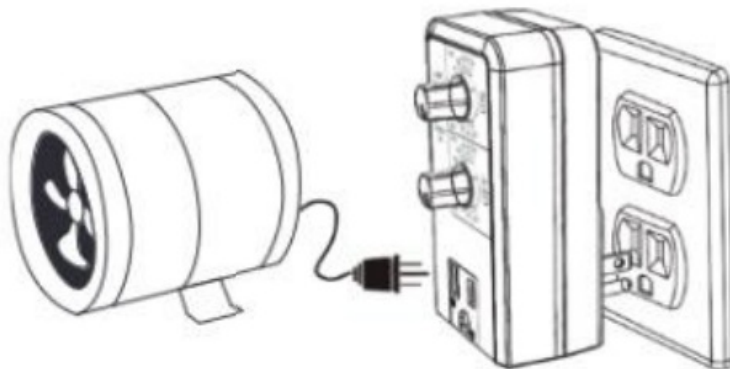


B. Rotate knob to set 'OFF' time.



Step2

Plug into outlet and appliance will cycle 'ON' then 'OFF' using current timer settings.



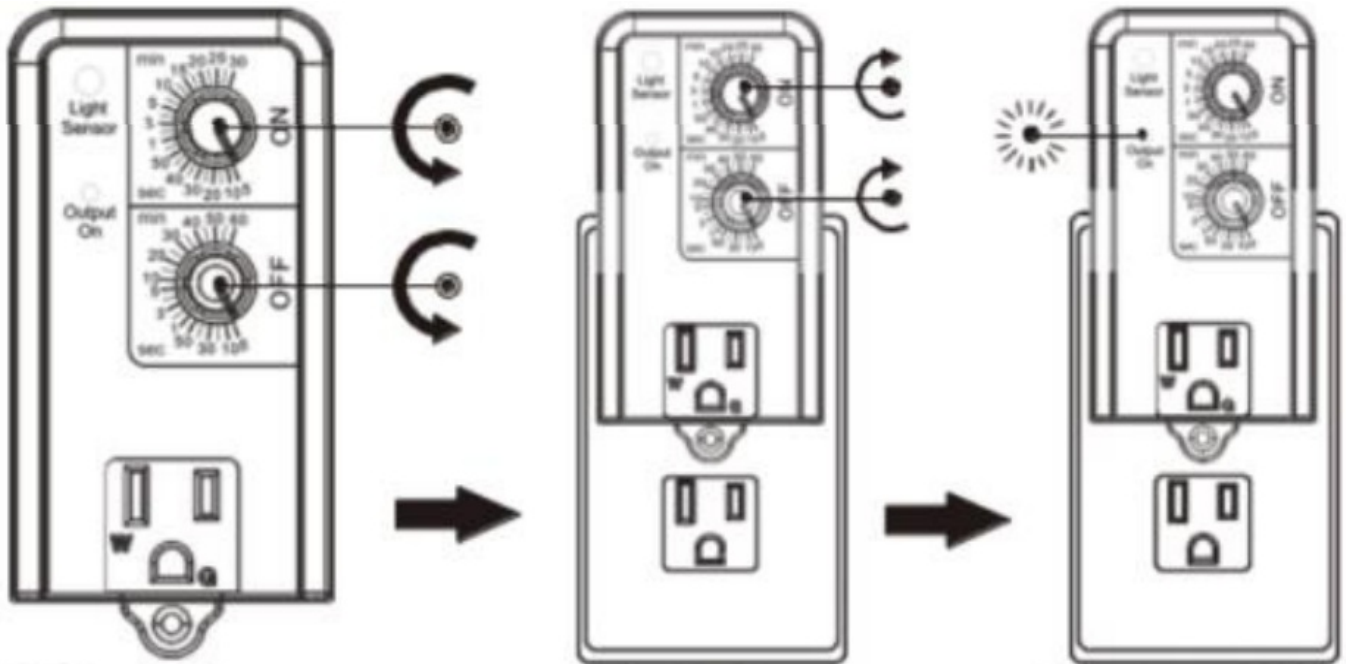
Continue to other side for Step 3.



Repeat Cycle Timer Instructions- Side B CHANGING MODES:

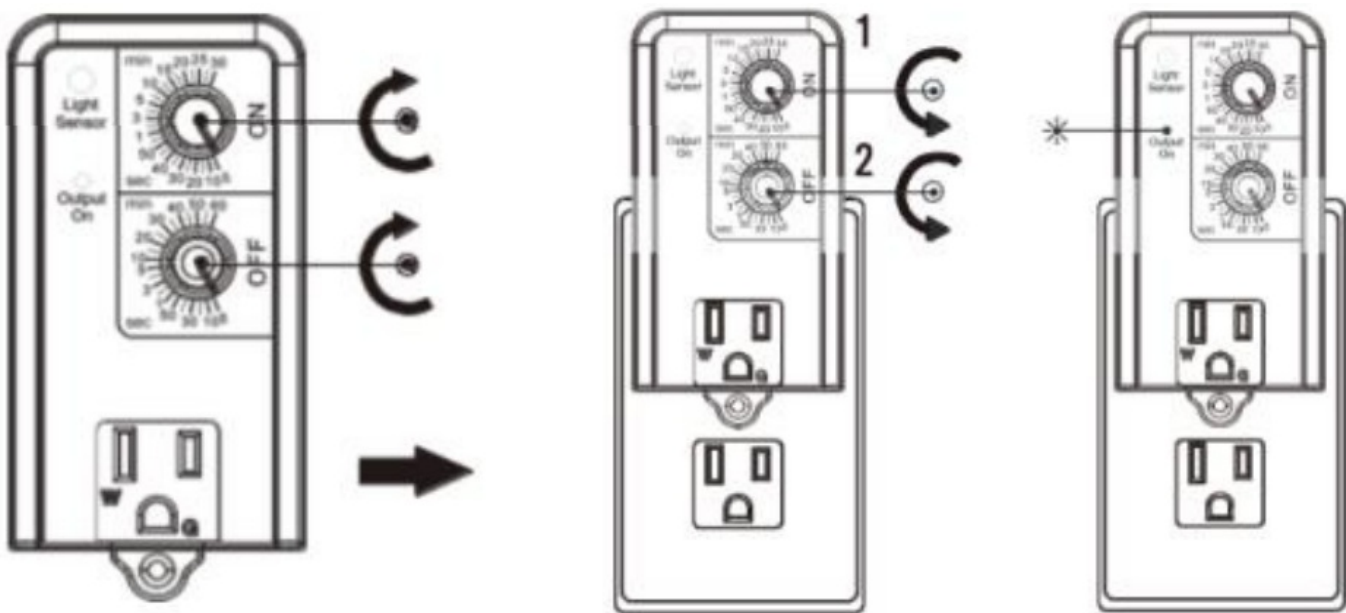
Step3

Sty ehour control



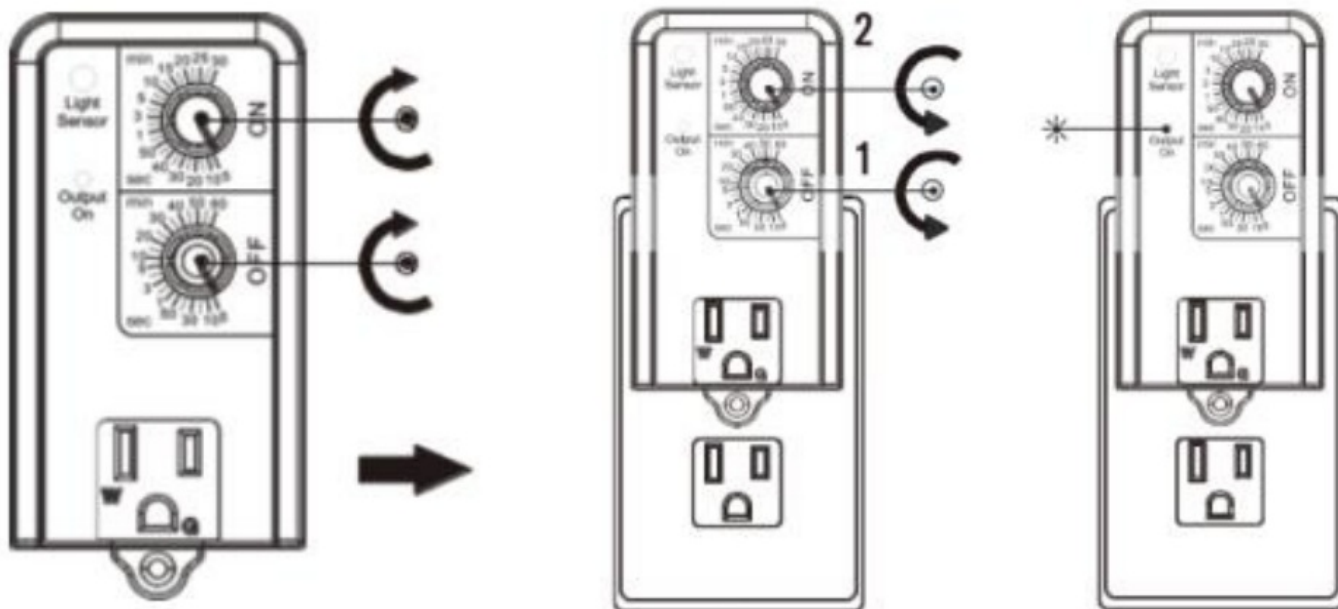
- A. Adjust both top & bottom knabs 1o mininu settings
- B. Plgin, then rutate top & bottom knobs to maximum sstting within 5 seconds.
- C. The 'Output On' LED activates bas on timer sstings.

Set to DAY control:



- A. Adjust both top & bottom knabs 1o mininu settings
- B. Pugin, then rotate top nob o minkum, then bottom knob to minimum settings ithin 5 seconds.
- C. The 'Output On' LED activates based on timer sittings.

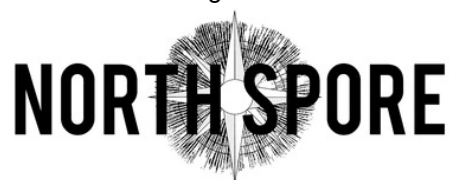
Set to NIGHT control:



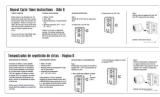
A Adjust both top & bottom knobs to 'maximum settings.

B. Pugin, then rotate ottom knob to minimum, then top knob to miimum settings withi 5 seconds.

C. The 'Output On' LED activates based on timer settings.



Documents / Resources

	<p>NORTH SPORE Repeat Cycle Timer [pdf] Instructions Repeat Cycle Timer, Cycle Timer, Timer</p>
---	---