

NORSUP PX Series WiFi Module User Manual



Contents

1 WIFI MODULE

1.1 ORIGINAL MANUAL

1.2 1. USER PRIVACY INSTRUCTIONS

1.3 2. DESCRIPTION

1.4 3. TECHNICAL PARAMETERS

1.5 4. INSTALLATION

1.6 5. FUNCTIONAL DESCRIPTION

1.7 6. ACCOUNT LOGIN

1.8 7. ADD DEVICE

1.9 8 WIFI CONFIGURE NETWORK

1.10 9. DEVICE MANAGEMENT

1.11 1. USER PRIVACY INSTRUCTIONS

1.12 2. DESCRIPTION

1.13 3. TECHNICAL PARAMETERS

1.14 4. INSTALLATION

1.15 5. FUNCTIONAL DESCRIPTION

1.16 6. ACCOUNT LOGIN

1.17 7. ADD DEVICE

1.18 8. IOS WIFI CONFIGURE NETWORK

1.19 9. ANDROID WIFI CONFIGURE NETWORK

1.20 10. DEVICE MANAGEMENT

2 Documents / Resources

2.1 References

3 Related Posts

WIFI MODULE

ORIGINAL MANUAL




NORSUP

DOWNLOAD NORSUPONE APP:

Google Play Store

Apple Appstore





Errors and technical modifications subject to change, reproduction as well as electronic duplication only with our written permission.

© NORSUP

Edition: 01.2023

1. USER PRIVACY INSTRUCTIONS

We take your privacy very seriously and we promise to inform you how we use the data. Users' private data, such as mailboxes, address, before uploading to the cloud, we will get your permission, and we will work hard to protect your data security.

2. DESCRIPTION

- Receive data signal from cloud server and transmit to the main device;
- Receive data signal from main device and transmit to cloud server;
- To achieve remote upgrade the WIFI module baseplate MCU by cloud server;
- To achieve the remote upgrade of the main device by WIFI module baseplate MCU.

3. TECHNICAL PARAMETERS

• OPERATING VOLTAGE:

DC8V~12V (Recommended value 12V)

• OPERATING CURRENT:

Max. recurrent peak 1A, average standby current 50mA

• TEMP. RANGE:

Operating Temp.: -30°C ~ +70°C ;

Storage Temp.: -40°C ~ +85°C

- **LED INDICATOR LIGHT:**

4 lights, Network configuration indicator, router connection indicator, cloud server connection indicator, 485 communication indicator;

- **DIMENSION (L×W×H)**

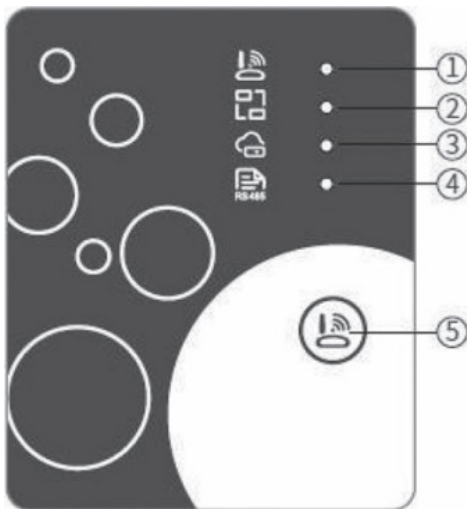
78mm×63mm×24mm

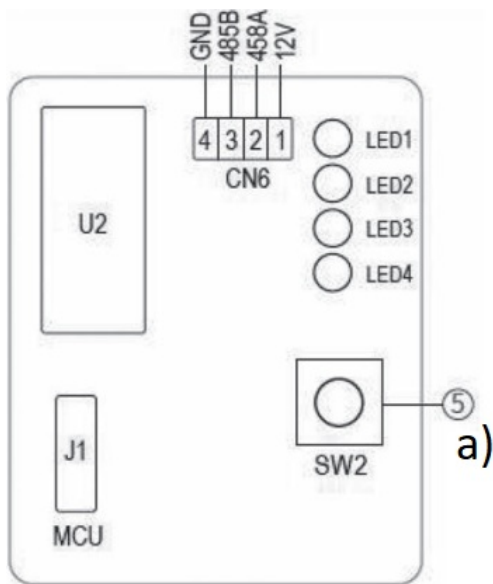
4. INSTALLATION

- There is a magnet on the back of the WIFI module, it can be installed indoors or outdoors, and avoid direct sunlight;
- Please scan the following QR code to download APP;



5. FUNCTIONAL DESCRIPTION





a) Configuration button

Short press:

Available to enter into AP Link configuration mode.

Item	Name	Long light	Slow flash	Extinguish
1	Network configuration indicator	Configuring Network	Smart-Link configuring	Done
2	Router connection indicator	Normal	Abnormal	—
3	Cloud server connection indicator	Normal	Abnormal	—
4	485 communication indicator	Normal	Abnormal	—

6. ACCOUNT LOGIN

Use email address and password to register, login or reset the password.

1. Account Registration: To register an account, click **1** (Fig.1) to jump to the Account Registration interface, fill in the relevant information and click **2** to receive verification code, while completed the application information, click **3** to read the details of the Privacy Policy, then click **4** to agree, and click **5**, registration is done.

Please note, the valid time of one verification code is 15min, please fill in the code within 15min, otherwise you need to ask for a new one.

2. Log in: Follow the instructions on the page (Fig.1), enter your registered email address and password, click **6** and jump to device list;

3. Forgot Password: When forget your password, click **7** (Fig.1), jump to the Forgot Password interface (Fig.3). Follow the instructions on the page, fill in the relevant information, click **8** to receive verification code from your

mailbox, click **9** to confirm and password reset is done.

7. ADD DEVICE

After log in, displays My Device interface (Fig. 4), follow the instruction to add WIFI or DTU.

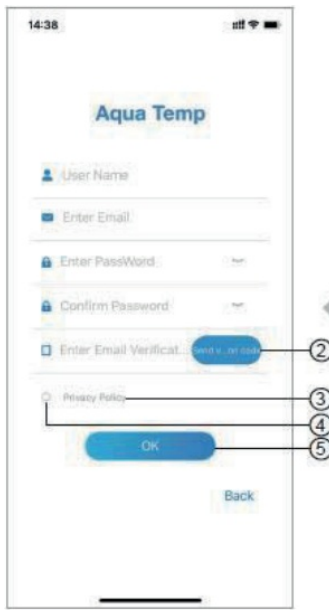


Fig. 2

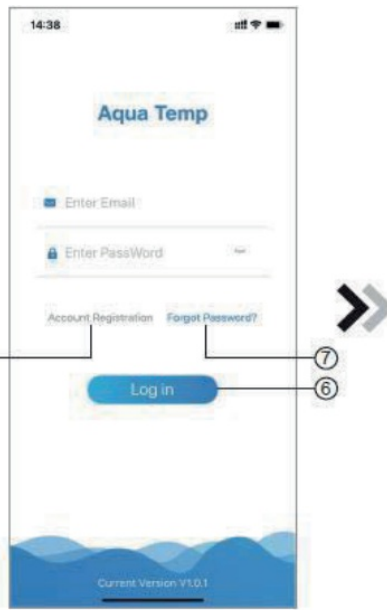


Fig. 1

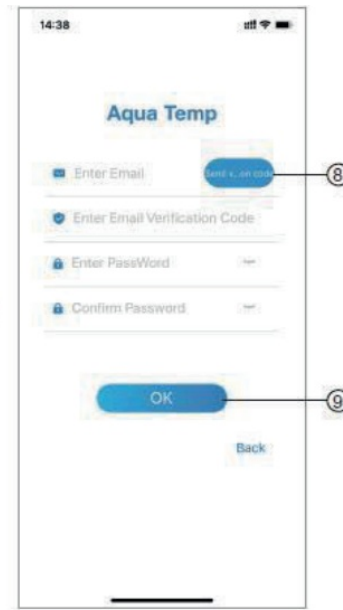


Fig. 3

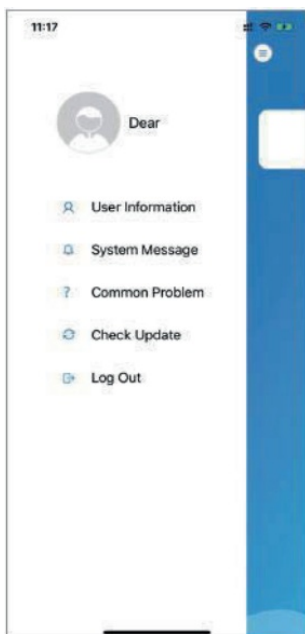


Fig. 5

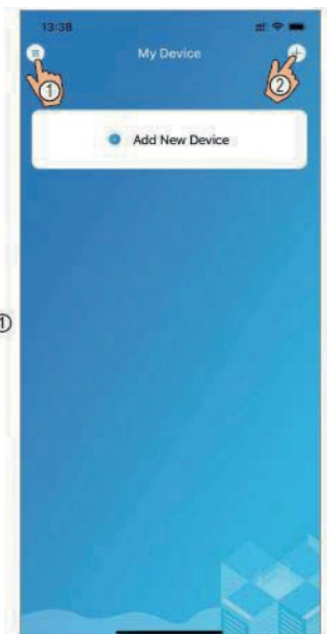


Fig. 4



Fig. 6

Fig. 1 – Login interface

Fig. 2 – Account Registration interface

Fig. 3 – Forgot Password interface

Fig. 4 – My Device interface

Fig. 5 – The left-hand menu

Fig. 6 – Add Device interface

8 WIFI CONFIGURE NETWORK

1. Follow the instructions on the page (Fig.7), press button on module and hold for 1s till two lights on, then AP connection is activated, click **10** to confirm, click **11** to turn the page;

2. Click **12** to enter the WIFI password for the current connection, click **13** to confirm;

3. Jump to system settings, connect specified WIFI, click **14** to select the “Smart_AP_xxx”, click **15** to popup window (Fig.10), follow the instruction and then jump to WIFI setting interface (Fig.11);

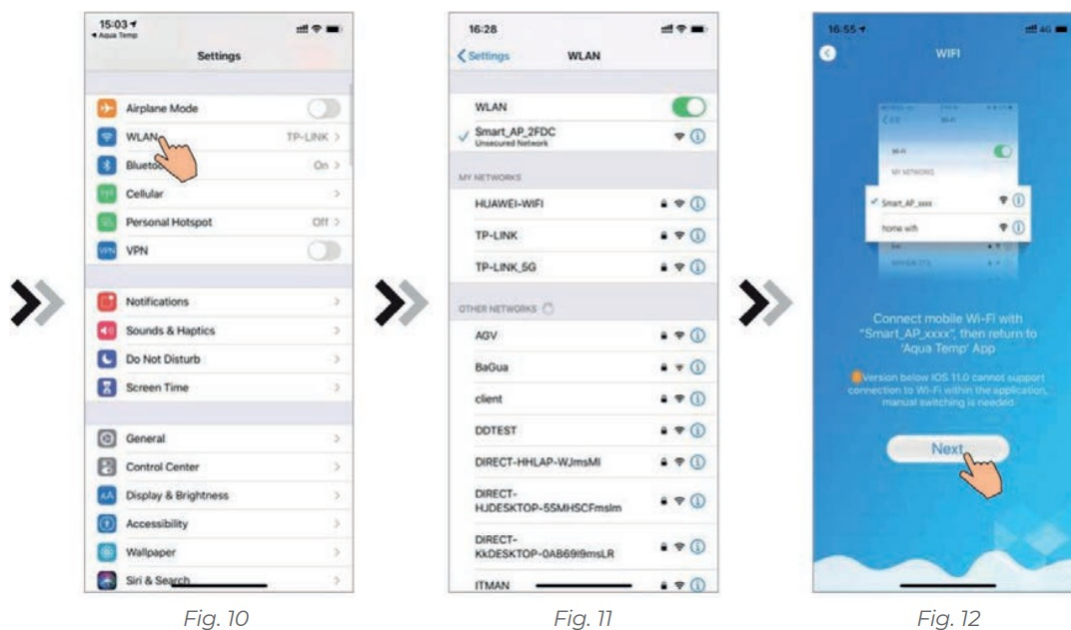
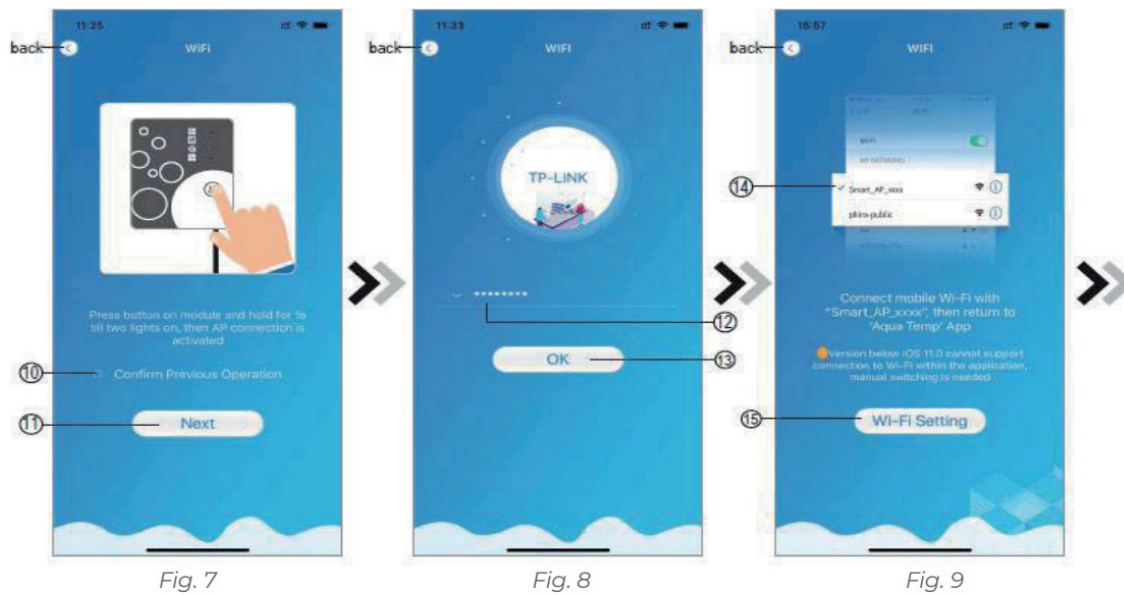


Fig. 7 WIFI Module On interface

Fig. 8 Enter password interface

Fig. 9 Connect specified WIFI

Fig. 10 Setting interface

Fig. 11 WIFI setting interface

Fig. 12 Connect specified WIFI

4. Slide the page back to configure network interface (Fig. 12), click **16** to join WLAN Network, click **17** to cancel, click **18** to turn next page (Fig. 13); click **19** to bond device (Fig. 14);

5. Click “OK” to allow this APP to use the camera for scanning the barcode on heat pump unit (Fig.15); click “OK”, device bond is done (Fig.16);

6. After WIFI and DTU bonding is done, jump back to My Device (Fig. 17).

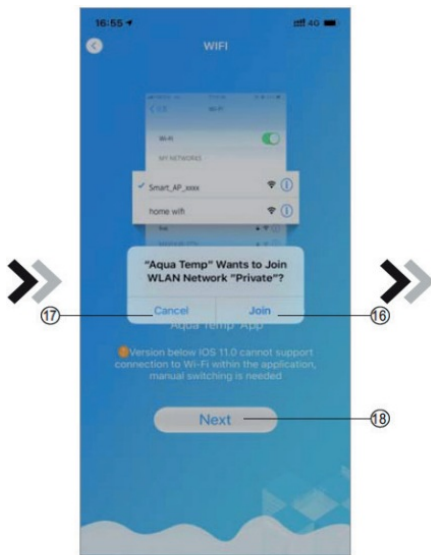


Fig. 13

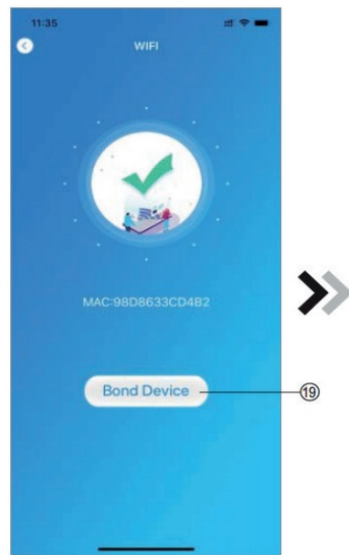


Fig. 14

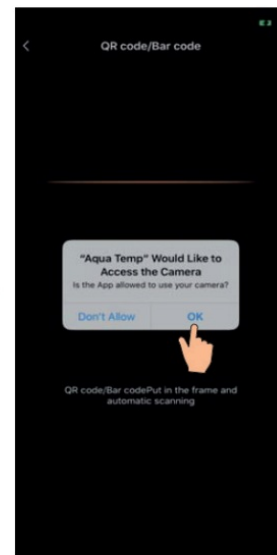


Fig. 15

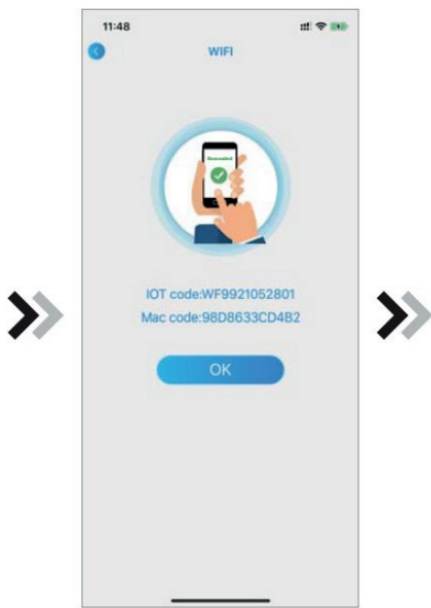


Fig. 16



Fig. 17

- Fig. 13 – Configure Network interface
- Fig. 14 – Bond Device interface
- Fig. 15 – Scanning interface
- Fig. 16 – Bond device done interface
- Fig. 17 – Device management interface

9. DEVICE MANAGEMENT

Device management operations are as below:

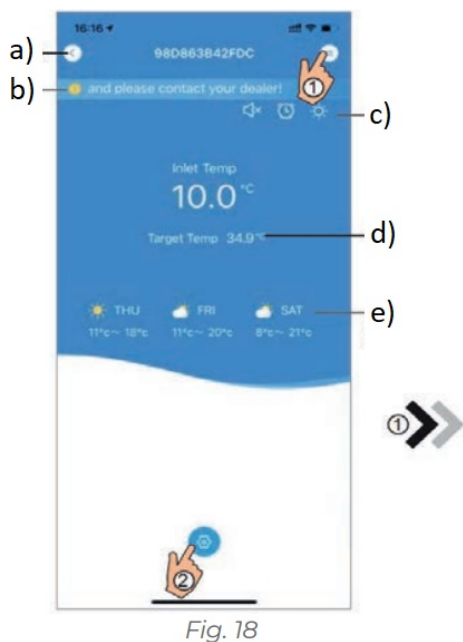


Fig. 18

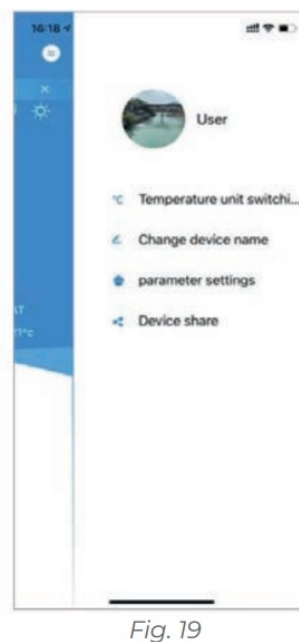


Fig. 19

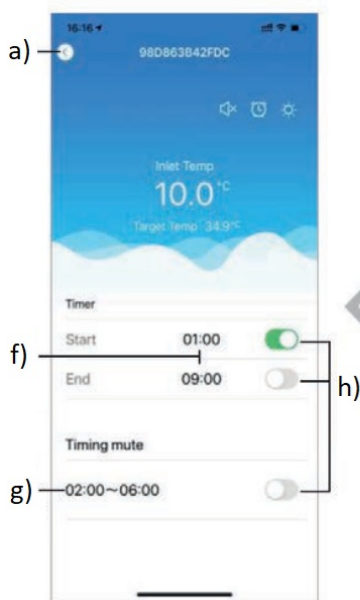


Fig. 21

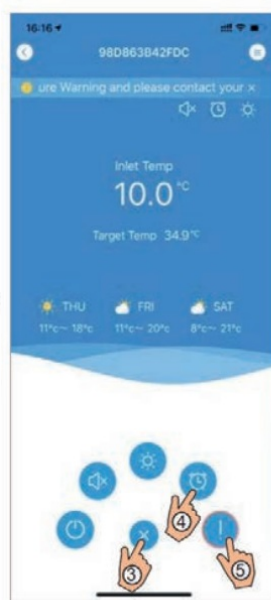


Fig. 20

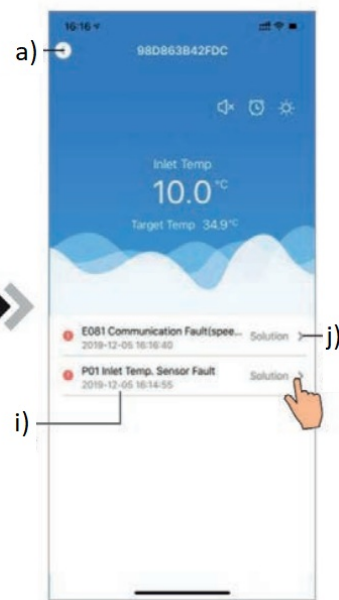


Fig. 22

- Fig. 18 – Device Main interface
 Fig. 19 – The right-hand menu interface
 Fig. 20 – Device Main interface
 Fig. 21 – Timing Settings interface
 Fig. 22 – Troubleshooting interface

- a) back
 b) Warning
 c) Display the current operating mode
 d) Click to adjust the target temp.
 e) Display the latest 3-day weather
 f) Click to adjust the timing settings
 g) Click to adjust the timing mute settings
 h) Click to switch on/off
 on: green
 off: grey

- i) Display the error
- j) Click to read the solution

Icon	Name	Functions
	ON/OFF	Click it to turn on/ off the unit
	Silent Mode Off	Display silent mode off, click it to activate the silent mode
	Silent Mode On	Display silent mode on, click it to turn off the silent mode
	Mode shift	Mode changing: Cooling–Heating–Auto
	Cooling	Display Cooling mode, click it to change operating mode
	Heating	Display Heating mode, click it to change operating mode
	Auto	Display Auto mode, click it to change operating mode
	Timing settings	Click it to jump to the timer on/ off and mute timer setting interface
	Troubleshooting	Click it to jump to the troubleshooting interface
	Menu	Click to unfold or collapse the menu

1. USER PRIVACY INSTRUCTIONS

We take your privacy very seriously and we promise to inform you how we use the data. Users' private data, such as mailboxes, address, before uploading to the cloud, we will get your permission, and we will work hard to protect your data security.

2. DESCRIPTION

- Receive data signal from cloud server and transmit to the main device;
- Receive data signal from main device and transmit to cloud server;
- To achieve remote upgrade the WIFI module baseplate MCU by cloud server;
- To achieve the remote upgrade of the main device by WIFI module baseplate MCU.

3. TECHNICAL PARAMETERS

- **OPERATING VOLTAGE:**

DC8V~12V (Recommended value 12V)

- **OPERATING CURRENT:**

Max. recurrent peak 1A, average standby current 50mA

- **TEMP. RANGE:**

Operating Temp.: -30°C ~ +70°C ;

Storage Temp.: -40°C ~ +85°C

- **LED INDICATOR LIGHT:**

4 lights, Network configuration indicator, router connection indicator, cloud server connection indicator, 485 communication indicator;

- **DIMENSION (L×W×H):**

78mm×63mm×24mm

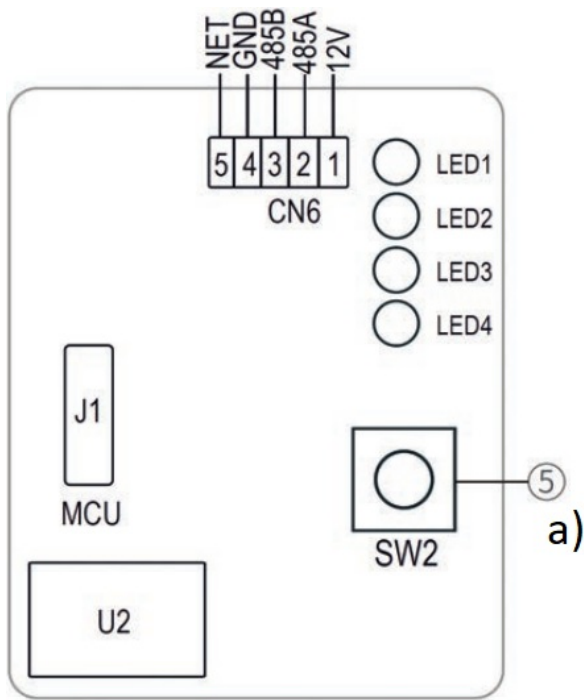
4. INSTALLATION

- There is a magnet on the back of the WIFI module, it can be installed indoors or outdoors, and avoid direct sunlight;
- Please scan the following QR code to download APP;



5. FUNCTIONAL DESCRIPTION





a) Configuration button

Short press:

Available to enter into AP Link configuration mode.

Item	Name	Long light	Slow flash	Extinguish
1	Network configuration indicator	Configuring Network	Smart-Link configuring	Done
2	Router connection indicator	Normal	Abnormal	—
3	Cloud server connection indicator	Normal	Abnormal	—
4	485 communication indicator	Normal	Abnormal	—

6. ACCOUNT LOGIN

Use email address and password to register, login or reset the password.

1. Account Registration: To register an account, click **1** (Fig.1) to jump to the Account Registration interface, fill in the relevant information and click **2** to receive verification code, while completed the application information, click **3** to read the details of the Privacy Policy, then click **4** to agree, and click **5**, registration is done. Please note the valid time of one verification code is 15min, please fill in the verification code within 15min, otherwise you need to ask for a new one.

2. Log in: Follow the instructions on the page (Fig.1), enter your registered email address and password, click **6** and jump to device list;

3. Forgot Password: When forgot your password, click **7** (Fig.1), jump to the Forgot Password interface (Fig.3). Follow the instructions on the page, fill in the relevant information, click **8** to receive verification code from your mailbox, click **9** to confirm and password reset is done.

7. ADD DEVICE

After log in, displays My Device interface (Fig. 4), follow the instruction to add WIFI or DTU.

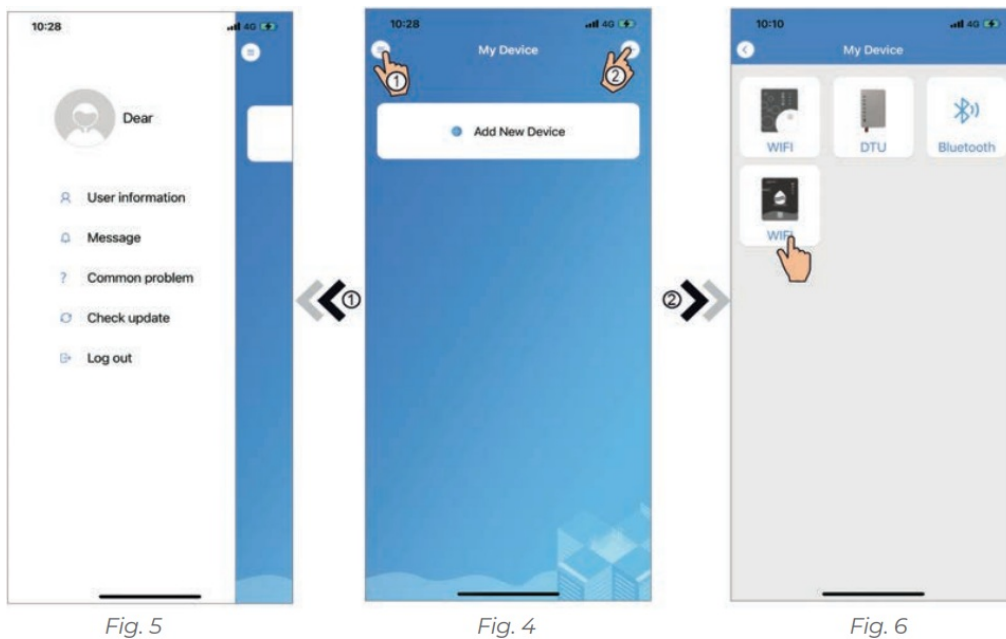
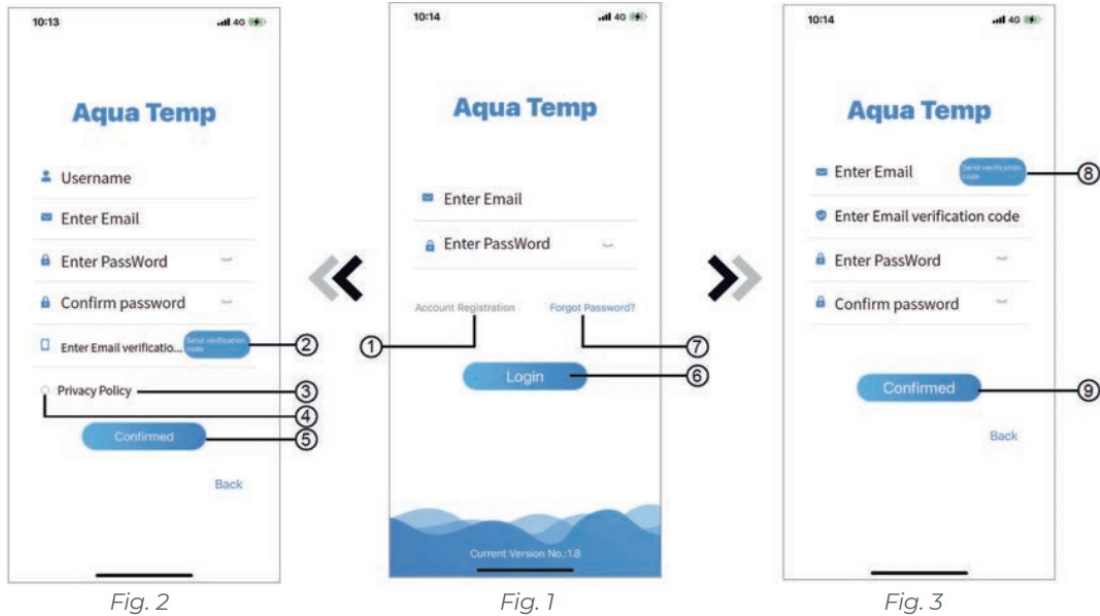


Fig. 1 Login interface
Fig. 2 Account Registration interface
Fig. 3 Forgot Password interface
Fig. 4 My Device interface
Fig. 5 The left-hand menu
Fig. 6 Add Device interface

8. IOS WIFI CONFIGURE NETWORK

1. Click **10** to confirm the permission of bluetooth, location and camera (Fig.7);

2. Follow the instructions on the page (Fig.8), press button on module and hold for 1s till two lights on then AP connection is activated, click **12** to next;

3. Click **13** to enter the WIFI password for the current connection, click **14** to confirm.

4. Click “OK” to allow bluetooth permission (Fig.10);

5. Click “Settings” (Fig.11) to enter bluetooth setting interface (Fig.12);

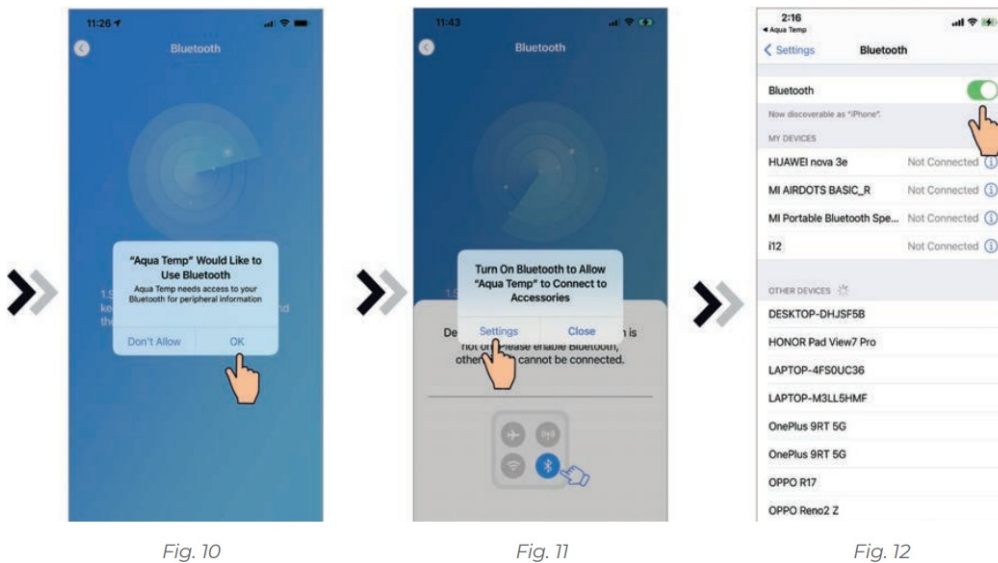
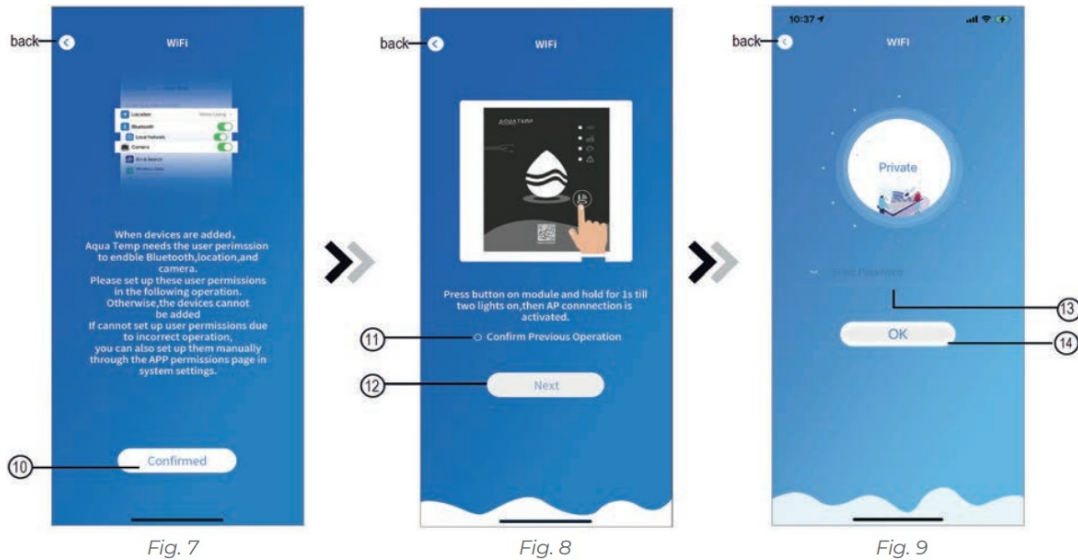


Fig. 7 Permission confirmed interface

Fig. 8 WIFI Module On interface

Fig. 9 Enter password interface

Fig. 10 Allow bluetooth permission

Fig. 11 Enable bluetooth permission

Fig. 12 Bluetooth setting interface

6. Turn on bluetooth and back to the APP, directly enter the searching device interface(Fig. 13), the APP automatically searches for WIFI module(Fig.14);

7. Click **15** to bond device (Fig.14);

8. Click “OK” (Fig.15) to allow the App to use the camera for scanning the WF code on the WIFI module (Fig.17.1), or click “manual input” to enter the WF code (Fig.17.2).

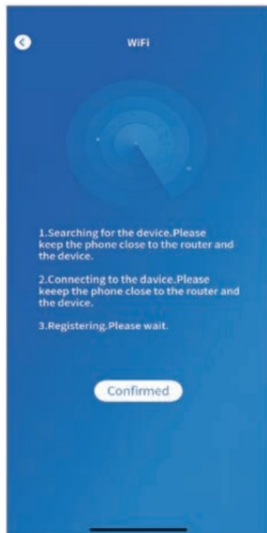


Fig. 13

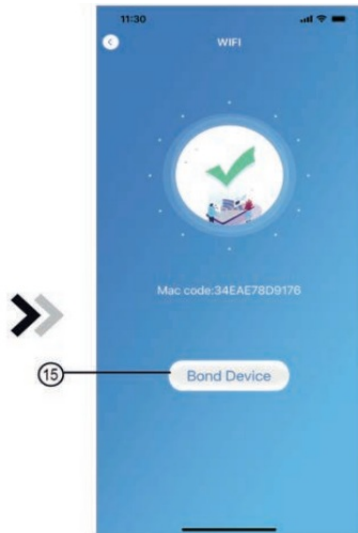


Fig. 14

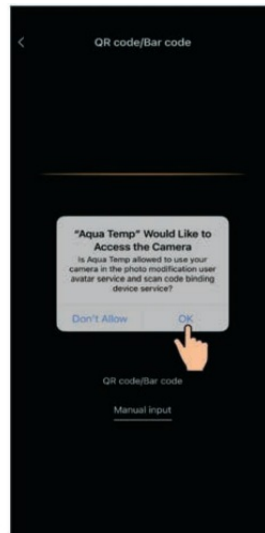


Fig. 15

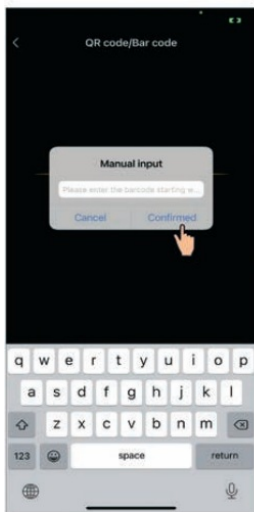


Fig. 17.2

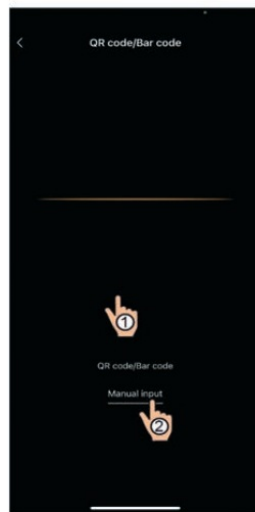


Fig. 16



Fig. 17.1

- Fig. 13 Searching device interface
- Fig. 14 Bond device interface
- Fig. 15 Enable camera permission
- Fig. 16 Scanning interface
- Fig. 17.1 WF barcode
- Fig. 17.2 Manual input interface

9. Click “Confirmed”, device bond is done (Fig.18).

10. After WIFI bonding is done, and jump back to My Device(Fig.19);

11. Click the device, directly to jump to device main interface(Fig.20)

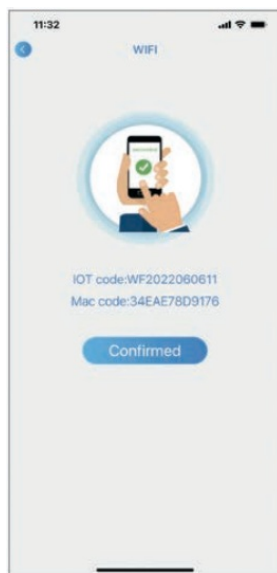


Fig. 18

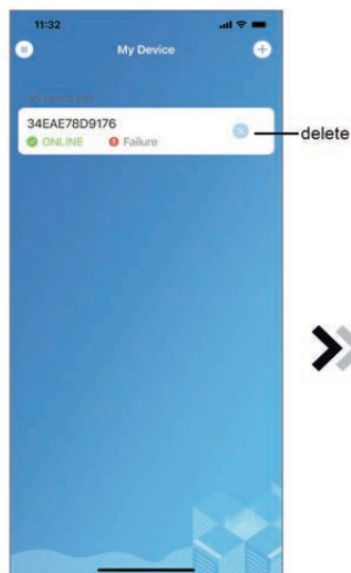


Fig. 19

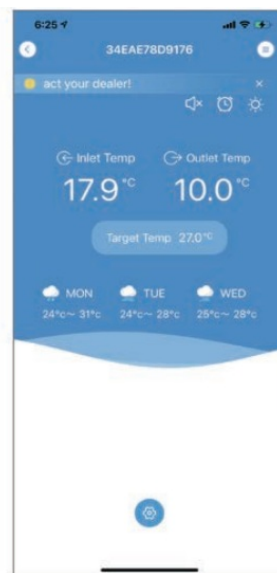


Fig. 20

Fig. 18 Bond device done interface

Fig. 19 Device management interface

Fig. 20 Device Main interface

9. ANDROID WIFI CONFIGURE NETWORK

1. Click **16** to confirm the permission of bluetooth, location and camera (Fig.21);
2. Follow the instructions on the page (Fig.22), press button on module and hold for 1s till two lights on then AP connection is activated, click **18** to next;
3. Click **19** to enter the WIFI password for the current connection, click **20** to confirm.



Fig. 21



Fig. 22

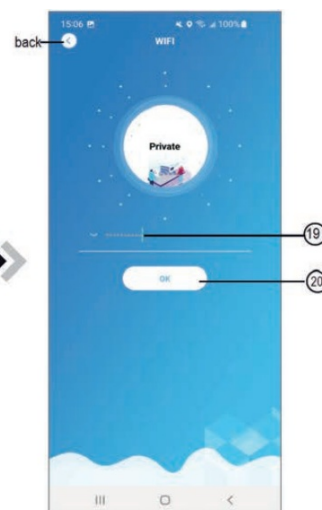


Fig. 23

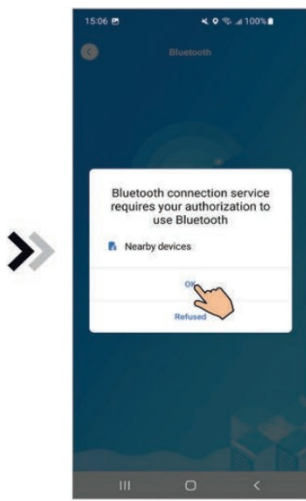


Fig. 24



Fig. 25

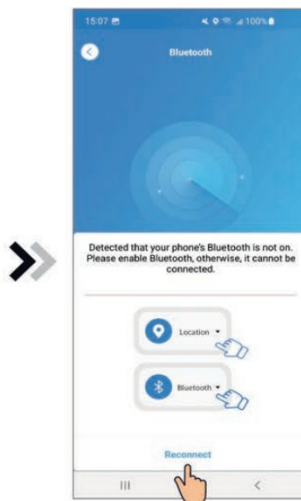


Fig. 26

Fig. 21 Permission confirmed interface

Fig. 22 WIFI Module On interface

Fig. 23 Enter password interface

Fig. 24 Enable bluetooth permission

Fig. 25 Enable location permission

Fig. 26 Reconnect interface

4. Click “OK” to enable bluetooth permission (Fig.24);

5. Click “Allow” to enable bluetooth permission (Fig.25);

6. Click “Reconnect” (Fig.26) directly jump to searching device interface (Fig.27), the APP automatically searches for WIFI module (Fig.28);

7. Click **21** to bond device (Fig.28);

8. Click “While using the app” allow the App to use the camera for scanning the WF code on the WIFI module (Fig.31.1), or click ‘manual input’ to enter the WF code (Fig.32.2).

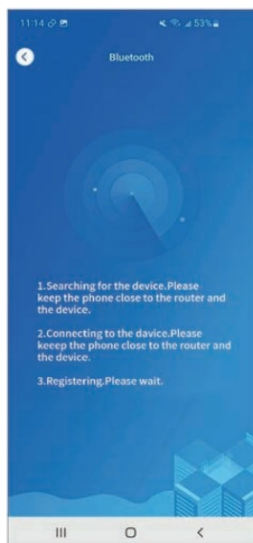


Fig. 27

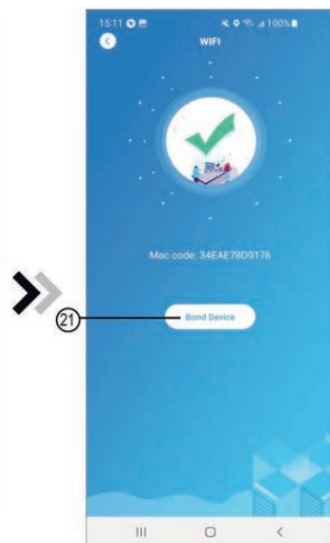


Fig. 28

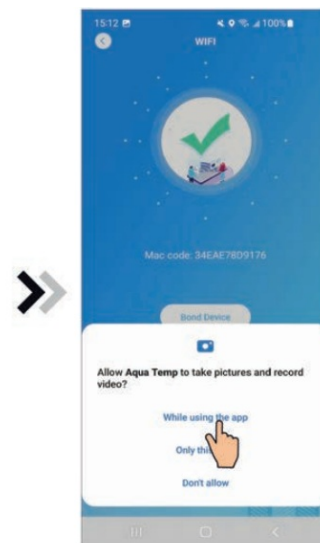


Fig. 29

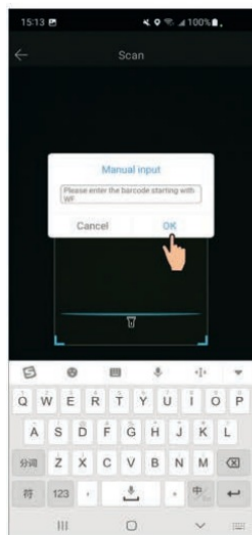


Fig. 31.2

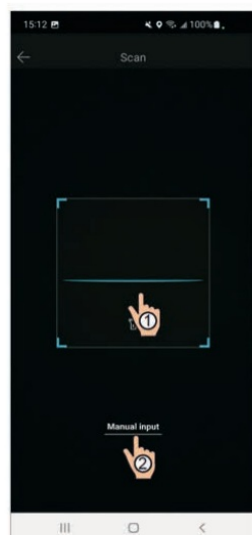


Fig. 30



Fig. 31.1

Fig. 27 Searching device interface

Fig. 28 Bond device interface

Fig. 29 Enable camera permission

Fig. 30 Scanning interface

Fig. 31.1 WF barcode

Fig. 31.2 Manual input interface

9. Click "OK", device bond is done (Fig.33).

10. After WIFI bonding is done, and jump back to My Device (Fig.19);

11. Click the device directly jump to device main interface (Fig.20)

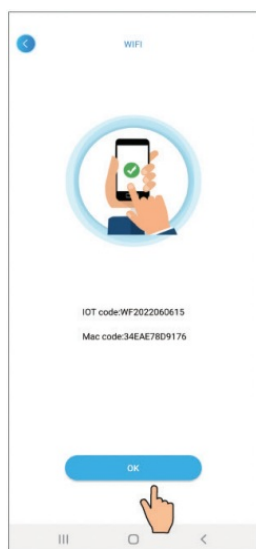


Fig. 32

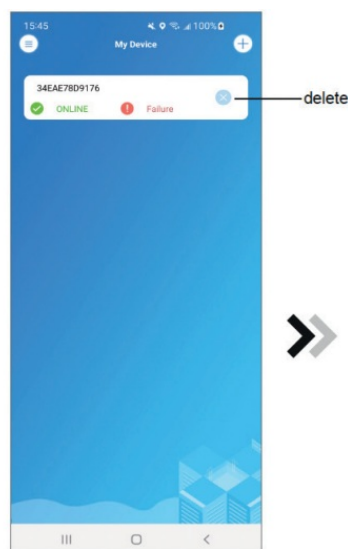


Fig. 33

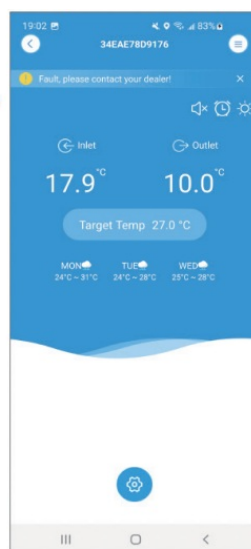


Fig. 34

Fig. 32 Bond device done interface

Fig. 33 Device management interface

Fig. 34 Device Main interface

10. DEVICE MANAGEMENT

Device management operations are as below :

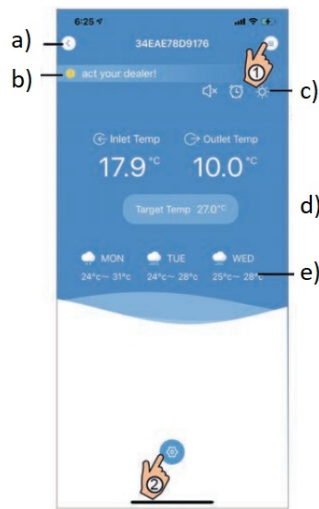


Fig. 35

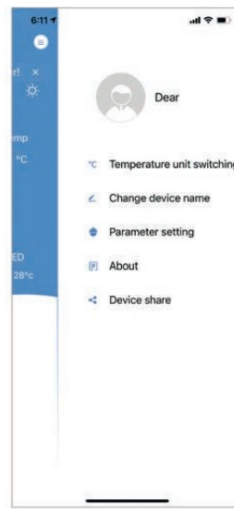


Fig. 36

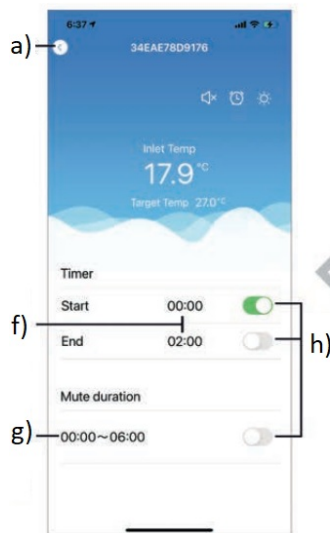


Fig. 37

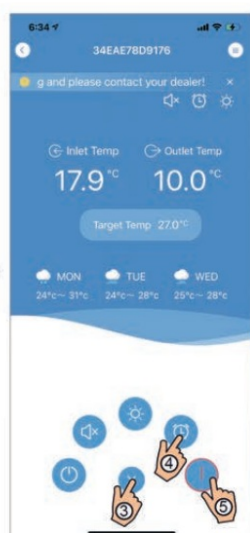










Fig. 38



Fig. 39

- Fig. 35 Device Main interface
 Fig. 36 The right-hand menu interface
 Fig. 37 Timing Settings interface
 Fig. 38 Device Main interface
 Fig. 39 Troubleshooting interface

- a) back
 b) Warning
 c) Display the current operating mode
 d) Click to adjust the target temp.
 e) Display the latest 3-day weather
 f) Click to adjust the timing settings
 g) Click to adjust the timing mute settings
 h) Click to switch on/off
 on: green
 off: grey
 i) Display the error
 j) Click to read the solution


Icon	Name	Functions
	ON/OFF	Click it to turn on/ off the unit
	Silent Mode Off	Display silent mode off, click it to activate the silent mode
	Silent Mode On	Display silent mode on, click it to turn off the silent mode
	Mode shift	Mode changing: Cooling–Heating–Auto
	Cooling	Display Cooling mode, click it to change operating mode
	Heating	Display Heating mode, click it to change operating mode
	Auto	Display Auto mode, click it to change operating mode
	Timing settings	Click it to jump to the timer on/off and mute timer setting interface
	Troubleshooting	Click it to jump to the troubleshooting interface
	Menu	Click to unfold or collapse the menu



Norsup installer brochure 2023.v1



Documents / Resources

 <p>WiFi MODULE</p> <p>NORSUP</p>	<p>NORSUP PX Series WiFi Module [pdf] User Manual PX Series, PV Series, PX Series WiFi Module, WiFi Module, Module</p>
--	--

References

- [N](#) Home ★ [Norsup](#)

