

NORDIC CWC-L0118 18V Cordless Window Cleaner



NORDIC CWC-L0118 18V Cordless Window Cleaner User Manual

[Home](#) » [NORDIC](#) » NORDIC CWC-L0118 18V Cordless Window Cleaner User Manual 

Contents

- 1 NORDIC CWC-L0118 18V Cordless Window Cleaner
- 2 PRODUCT SPECIFICATION
- 3 GENERAL POWER TOOL SAFETY WARNINGS
- 4 POWER TOOL USE AND CARE
- 5 INTENDED USE
- 6 WINDOW CLEANING SAFETY INSTRUCTION
- 7 ASSEMBLY
- 8 OPERATION
- 9 USING THE ACCESSORIES
- 10 CLEANING AND CARE
- 11 KEY COMPONENTS LIST
- 12 Documents / Resources
 - 12.1 References
- 13 Related Posts



NORDIC CWC-L0118 18V Cordless Window Cleaner



PRODUCT SPECIFICATION

- **Voltage:** 18V
- **Max Vacuum:** 1.8kpa
- **Cleaning Width:** 26cm
- **Tank Volume:** 76 ml

GENERAL POWER TOOL SAFETY WARNINGS

- Read all safety warnings and instructions. Failure to heed warnings and follow instructions may result in electric shock, fire, and/or serious injury.
- Keep safety warnings and instructions for future reference.
- The term “power tool” in the safety warnings refers to your mains-operated (corded) power tool or battery-operated (cordless) power tool.

WORKING AREA

- Keep the working area clean and well-lit. Untidy and dark areas can lead to accidents.
- Do not operate power tools in potentially explosive surroundings, for example, in the presence of inflammable liquids, gases or dust. Power tools create sparks that may ignite the dust or fumes.
- Keep children and bystanders at a distance when operating a power tool. Distractions can cause you to lose control of it.

ELECTRICAL SAFETY

- Always check that the power supply corresponds to the voltage on the rating plate.
- Power tool plugs must match the outlet. Never modify the plug in any way. Do not use adapter plugs with

earthed power tools. Unmodified plugs and matching outlets will reduce the risk of an electric shock.

- Avoid body contact with earthed surfaces such as pipes, radiators, kitchen ranges, and refrigerators. There is an increased risk of an electric shock if your body is earthed.
- Do not expose power tools to rain or wet conditions. Getting water inside a power tool will increase the risk of an electric shock.
- Do not damage the cord. Never use the cord for carrying, pulling or unplugging the power tool. Keep the cord away from heat, oil, sharp edges or moving parts. Damaged or entangled cords increase the risk of an electric shock.
- When operating a power tool outdoors, use an extension cable suitable for outdoor use. Using a cord suitable for outdoor use reduces the risk of an electric shock.
- If operating a power tool in a damp location is unavoidable, use a power supply protected by a residual current device (RCD). Using an RCD reduces the risk of an electric shock.

PERSONAL SAFETY

- Stay alert, watch what you are doing, and use common sense when operating a power tool. Do not use a power tool when you are tired or under the influence of drugs, alcohol or medication. A moment of inattention when operating a power tool may result in serious personal injury.
- Use safety equipment. Always wear eye protection. Using safety equipment such as a dust mask, non-skid safety shoes, a hard hat, or hearing protection whenever it is needed will reduce the risk of personal injury.
- Avoid accidental starts. Ensure the switch is in the off position before inserting the plug. Carrying power tools with your finger on the switch or plugging in power tools when the switch is in the on position makes accidents more likely.
- Remove any adjusting keys or spanners before turning on the power tool. A spanner or key left attached to a rotating part of the power tool may result in personal injury.
- Do not reach out too far. Keep your feet firmly on the ground at all times. This will enable you to retain control over the power tool in unexpected situations.
- Dress properly. Do not wear loose clothing or jewelery. Keep your hair, clothing and gloves away from the power tool. Loose clothes, jewelery or long hair can become entangled in the moving parts.
- If there are devices for connecting dust extraction and collection facilities, please ensure that they are attached and used correctly. Using such devices can reduce dust-related hazards.

POWER TOOL USE AND CARE

- Do not expect the power tool to do more than it can. Use the correct power tool for what you want to do. A power tool will achieve better results and be safer if used in the context for which it was designed.
- Do not use the power tool if the switch cannot turn it on and off. A power tool with a broken switch is dangerous and must be repaired.
- Disconnect the plug from the power source before making adjustments, changing accessories, or storing power tools. Such preventive safety measures reduce the risk of starting the power tool accidentally.
- Store power tools, when not in use, out of the reach of children and do not allow people who are not familiar with the power tool or these instructions to operate it. Power tools are potentially dangerous in the hands of untrained users.
- Maintain power tools. Check for misalignment or jammed moving parts, breakages or any other feature that

might affect the operation of the power tool. If it is damaged, the power tool must be repaired. Many accidents are caused by using poorly maintained power tools.

- Keep cutting tools sharp and clean. Properly maintained cutting tools with sharp cutting edges are less likely to jam and are easier to control.
- Use the power tool, accessories cutting tools, etc., under these instructions and in the manner intended for the particular type of power tool, taking into account the working conditions and the work that needs to be done. Using a power tool in ways for which it was not intended can lead to potentially hazardous situations.

SERVICE

- Your power tool should be serviced by a qualified specialist using only standard spare parts. This will ensure that it meets the required safety standards.

INTENDED USE

- The product is a battery operated wet and dry vacuum that can be used on wet and dry surfaces (e.g. windows, upholstery).
- The product is intended for indoor use only. Do not use it outdoors. Contact with moisture must be avoided under all circumstances.
- If you use the product for purposes other than those described, the product may be damaged. Improper use can result in short circuits, fires or other hazards.
- The product complies with the statutory national and European requirements. For safety and approval purposes, you must not rebuild and/or modify the product.
- Read the operating instructions carefully and store them in a safe place. Make this product available to third parties only together with the operating instructions.

ADDITIONAL SAFETY INSTRUCTIONS FOR BATTERIES AND CHARGERS

- Use only batteries and chargers applicable for this machine.

BATTERIES

- Never attempt to open for any reason.
- Do not store in locations where the temperature may exceed 40 °C.
- Charge only at ambient temperatures between 4 °C and 40 °C.
- When disposing of batteries, follow the instructions given in the section "Protecting the environment".
- Do not cause short circuits. If the connection is made between the positive (+) and negative (-) terminal directly or via accidental contact with metallic objects, the battery is short circuited and an intense current will flow causing heat generation which may lead to casing rupture or fire.
- Do not heat. If batteries are heated to above 100 °C, sealing and insulating separators and other polymer components may be damaged resulting in electrolyte leakage and/or internal short-circuiting leading to heat generation causing rupture or fire. Moreover do not dispose of the batteries in fire, explosion, and/or intense burning may result.
- Under extreme conditions, battery leakage may occur. When you notice liquid on the battery, proceed as

follows:

- Carefully wipe the liquid off using a cloth. Avoid skin contact.

In case of skin or eye contact, follow the instructions below:

1. Immediately rinse with water. Neutralize with a mild acid such as lemon juice or vinegar.
2. In case of eye contact, rinse abundantly with clean water for at least 10 minutes.
3. Consult a physician.

Fire hazard! Avoid short-circuiting the contacts of a detached battery. Do not incinerate the battery.

CHARGERS

- Never attempt to charge non-rechargeable batteries.
- Have defective cords replaced immediately?
- Do not be exposed to water.
- Do not open the charger.
- Do not probe the charger.
- The charger is intended for indoor use only.

SYMBOLS

In this manual and/or on the machine the following symbols may be used:



- Denotes risk of personal injury or damage to the tool.



- Read the manual before use



- Wear eye protection



- Wear ear protection



- Wear safety gloves



- Wear respiratory protection



- Under essential requirements of the European directive(s)



- Class II – The machine is double insulated; Earthing wire is therefore not necessary (only for charger)



- **MAX. 40°C** Ambient temperature 40°C max. (only for battery)



- Do not expose the charger and battery pack to water



- Use battery and charger only in closed rooms



- Do not incinerate the battery pack or charger

WINDOW CLEANING SAFETY INSTRUCTION

- Always switch the power off and remove the battery before assembling, disassembling, cleaning, and storage.
- Risk of overheating and fire! Do not block air inlets and outlets. Never use the product if openings are blocked.
- Do not vacuum highly flammable, smoldering or explosive material (e.g., gasoline, cigarettes, matches, etc.).
- Do not vacuum toxic materials (bleach, ammonia), fine dust (cement, drywall), or asbestos debris.
- Do not vacuum hard or sharp objects like glass, nails, screws or coins as they may damage the product.

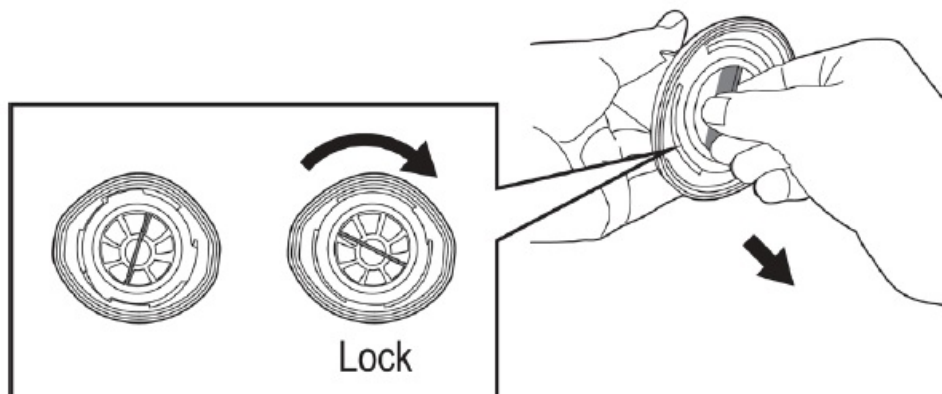
BEFORE YOU START

Fire hazard! Avoid short-circuiting the contacts of a detached battery. Do not incinerate the battery.

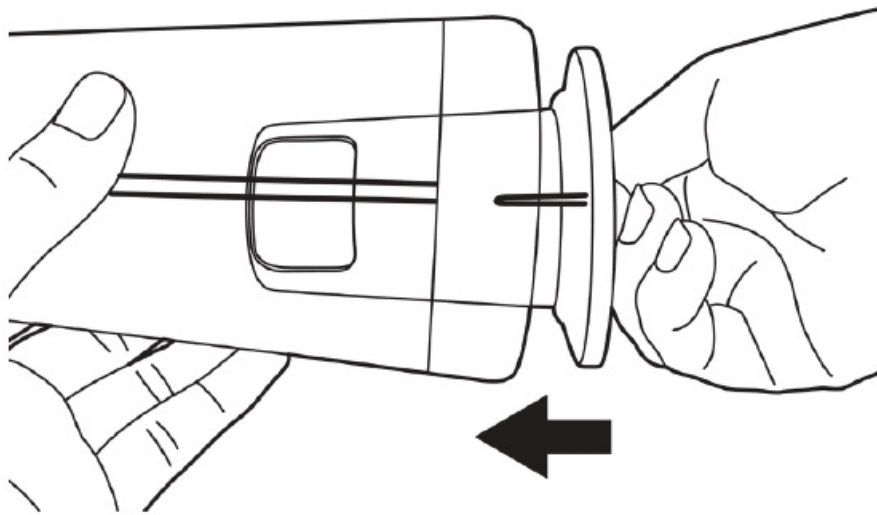
ASSEMBLY

Risk of leakage or damage! always check the filter assembly is correctly inserted and leveled in the dust cup.

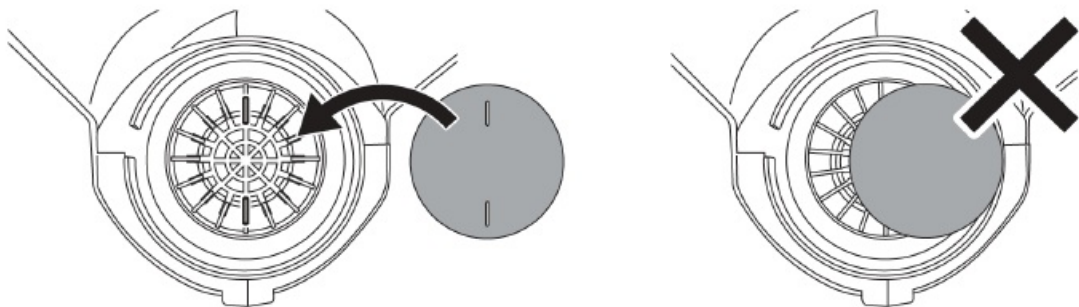
1. Insert the filter (11) into the filter holder (9) by aligning the tabs with the slots. Then turn the filter clockwise until it locks into place.



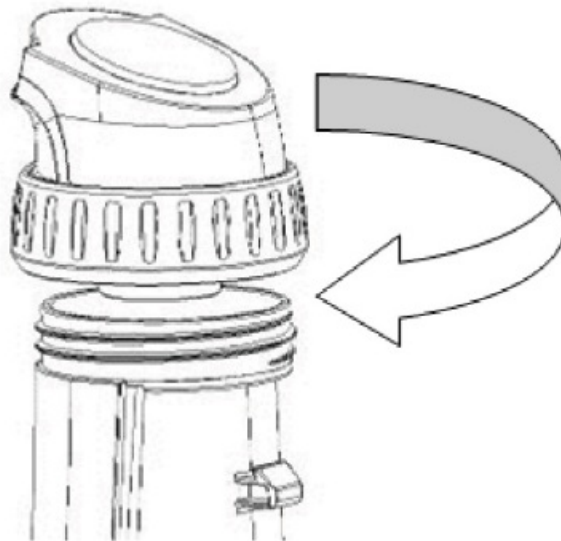
2. Align the rib (10) on the filter assembly (9, 11) with the groove in the back of the dust cup (7), then firmly push the filter assembly in until it is seated in the dust cup.



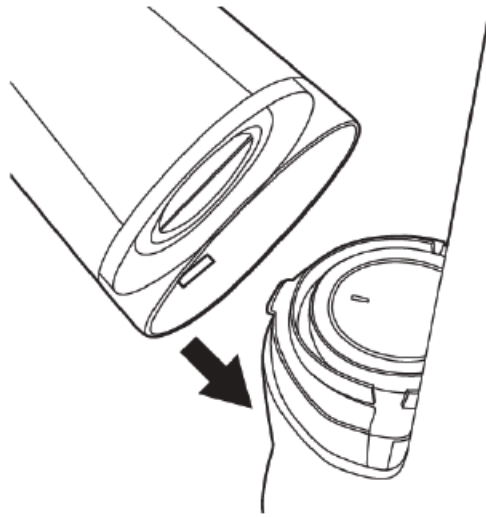
3. Put the sponge filter (12) on the motor unit, so that the two holes on the filter are inserted into the tabs on the motor unit.



4. Tighten the vacuum head (1) on the dust container (2) by turning the ring clockwise.



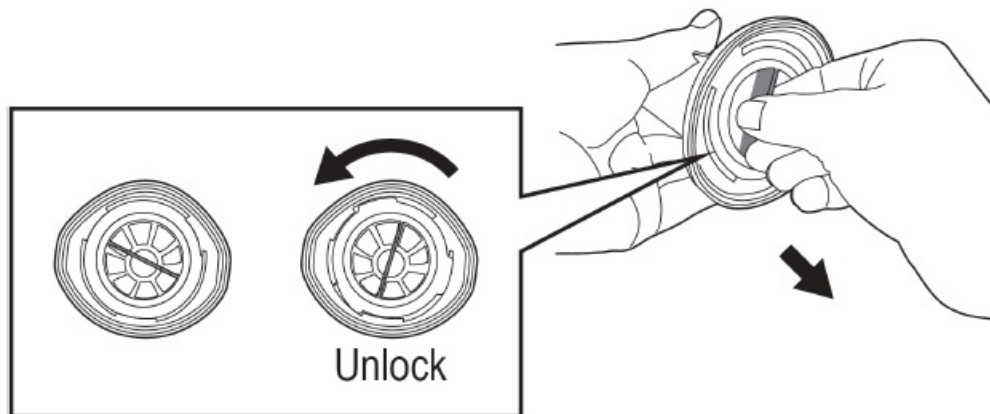
- Hold the dust cup (2) at an angle to insert the notch at the bottom into the front tab (13) on the motor unit.
- Then push the dust cup onto the motor unit until it snaps into place.



DISASSEMBLY

Risk of damage! Hold the dust cup before pressing the release buttons, as the dust cup will tilt out after the buttons are pressed.

1. Remove the rechargeable battery.
2. Hold the dust cup (2) with one hand, and then press the two release buttons (4) on the handle simultaneously to detach the dust cup.
3. Pull out the filter assembly (9, 11) from the dust cup.
4. Discard any dust or liquid from the dust cup.
5. Turn the filter (11) anti-clockwise to remove it from the filter holder (9).



- Remove the vacuum head (1) from the dust container by turning the ring anti-clockwise.
- Remove the foam filter (12) from the motor unit for cleaning.

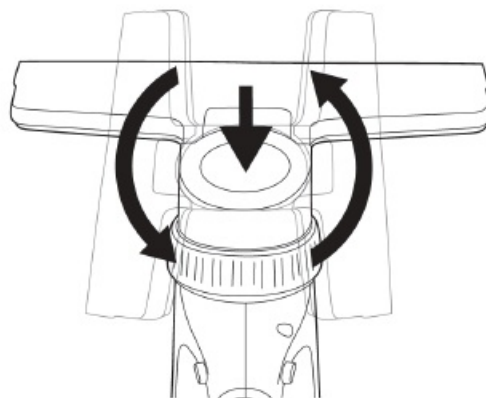
OPERATION

- Keep hair, loose clothing, fingers, and body parts away from openings and moving parts.

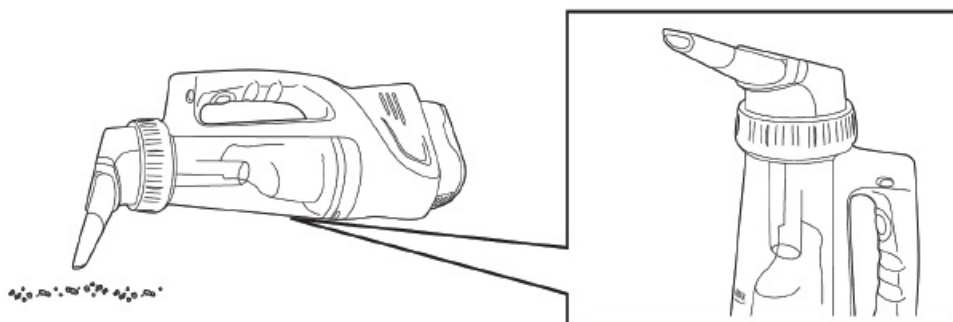
VACUUMING

1. Attach the desired accessory.
2. Press the On/Off button (5) to turn the vacuum cleaner on or off.

3. If you need to change the direction of the vacuum head, press the On/Off button to turn the vacuum cleaner off, push the vacuum head down to rotate it left or right (360° rotatable), and release to lock it in place.

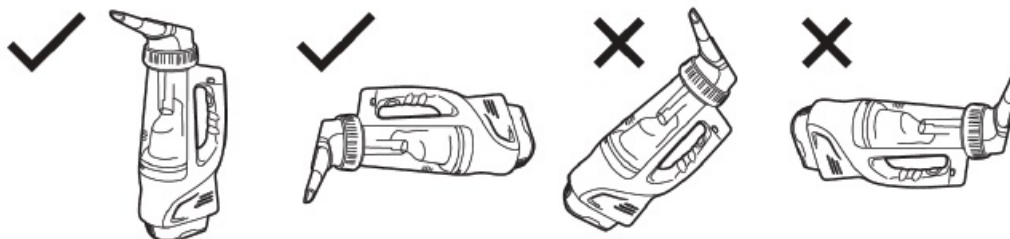


4. Regularly check the contents of the dust cup by holding the vacuum upright.



Important: Do not allow the contents to exceed the “MAX” level mark to prevent leakage or damage to the appliance.

5. Always hold the vacuum cleaner in an upright or horizontal position, as illustrated.



Important: DO NOT tilt the vacuum cleaner backward, as this will cause liquids to enter the motor unit and be expelled from the air outlet. This can damage the appliance.

EMPTYING THE DUST CUP

1. Press the On/Off button (5) to turn the vacuum cleaner off.
2. Hold the dust cup with one hand, and then press the two release buttons (4) simultaneously to detach the dust cup.

Important: To prevent damage, always hold the dust cup before pressing the release buttons, as the dust cup will tilt out after the buttons are pressed

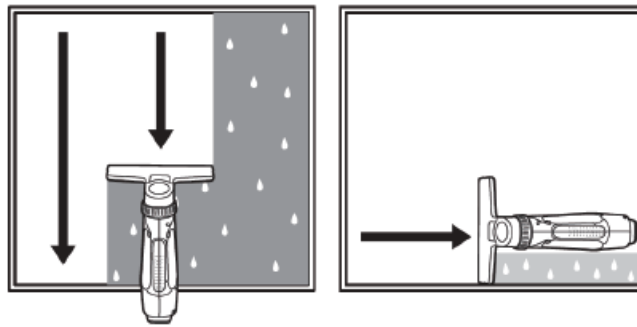
3. Pull out the filter assembly (9, 11) from the dust cup.
4. Empty the contents of the dust cup.
5. Reattach the filter assembly (9, 11) and the dust cup (2) to the vacuum cleaner to continue vacuuming.

USING THE ACCESSORIES

SCRAPER

Use the scraper (15) to wet vacuum a large glass or window. The scraper can be used after cleaning the glass surface with the spray bottle/scrubber.

1. Attach the scraper to the vacuum head.
2. Press the On/Off button to turn the vacuum cleaner on.
3. Vacuum from top to bottom, moving to the next section until the entire width of the surface is covered.



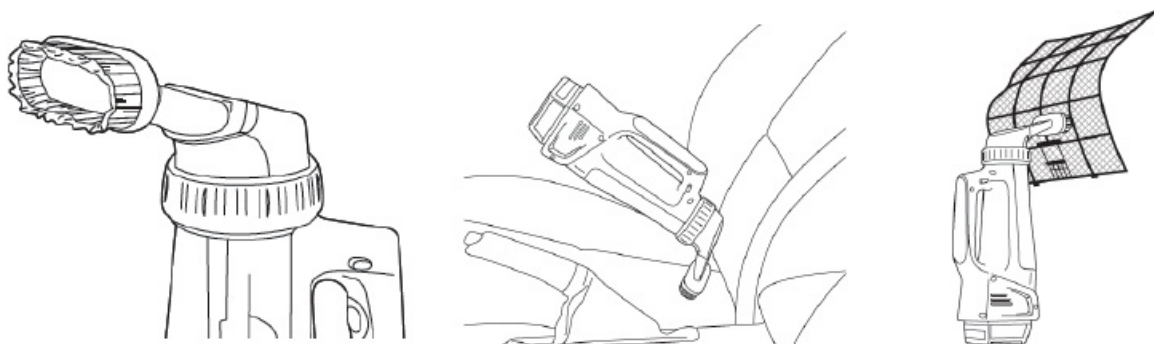
CREVICE TOOL

Use the crevice tool (14) to vacuum small corners. It can be used to vacuum liquids or dust.



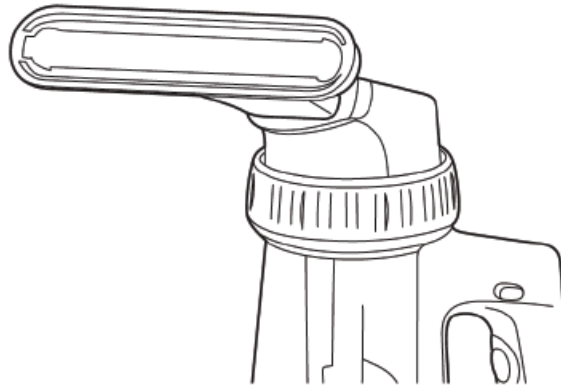
SMALL BRUSH

The small brush (16) can be used for various purposes (e.g., sofas, beds, floors, curtains). Only use this tool to vacuum dust.



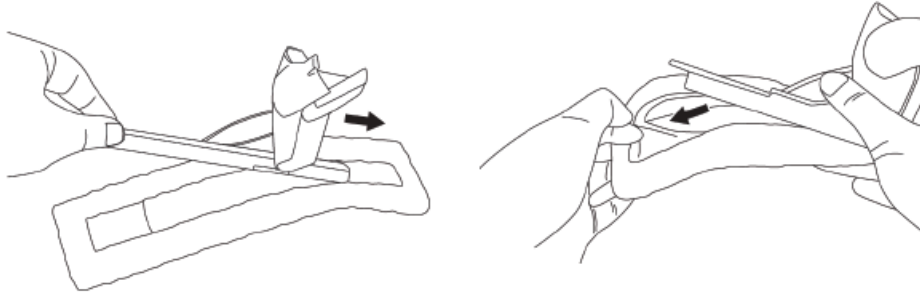
SCREEN BRUSH OR UPHOLSTERY NOZZLE

The upholstery nozzle (17) can be used to vacuum fabric sofas, (insect) window screens, and various other fabric furnishings.

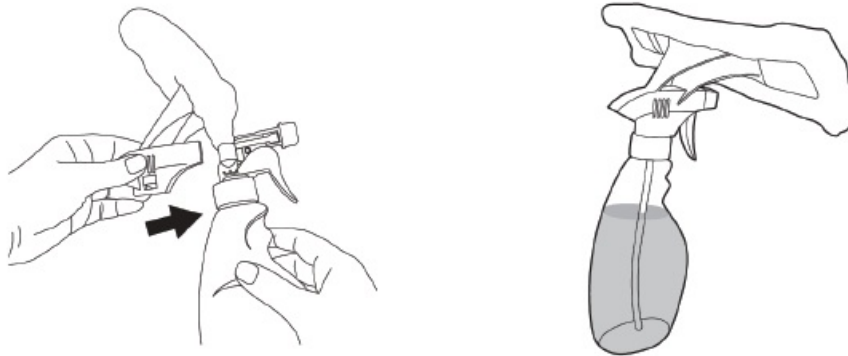


USING THE SPRAY BOTTLE WITH SCRUBBER

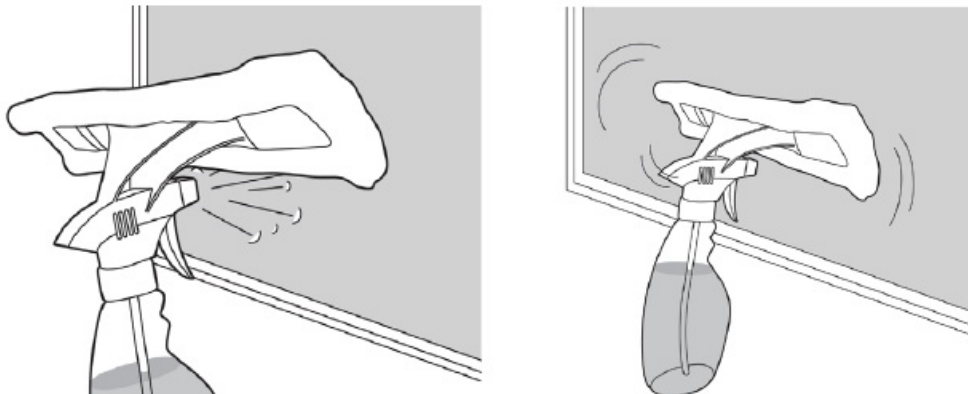
1. Fill the spray bottle (18) with water, or a mild window or glass cleaning solution, and close the spray head by turning it clockwise.
2. Insert the ends of the scrubber head (19) into the elastic holders of the pad (20).



3. Close the hook-and-loop fastener to secure the pad to the scrubber head.
4. Slide the scrubber head (19) onto the spray bottle.



5. Choose a nozzle setting: Spray / Stream / Off.
6. Spray the water or cleaning solution on the cleaning surface, and clean the surface with the scrubber pad.



7. Use the vacuum cleaner with the scraper attachment (15) to vacuum any remaining water.

CLEANING AND CARE

- **Important:** Always switch the power OFF and disconnect the rechargeable battery pack if leaving the product unattended, when changing accessories, cleaning, or after use.
- **Warning:** Do not use harsh cleaning agents, rubbing alcohol or other chemical solutions. They damage the housing and can cause the product to malfunction.
- **Warning:** Do not immerse the motor unit in water.

CLEANING

1. Empty the contents of the dust cup after each use.
2. Check the filters and clean them regularly.
3. Disassemble the vacuum cleaner for thorough cleaning when required.
4. Allow all parts to dry completely before reassembling and storing.

SPECIFIC CLEANING INSTRUCTIONS

- Our machines have been designed to operate over a long time with a minimum of maintenance.
- Continuous satisfactory operation depends upon proper machine care and regular cleaning.

MOTOR UNIT

- Clean with a soft, moist cloth. Keep the air inlets and outlets free of any obstructions (e.g. dust, hair, lint, etc.).

DUST CUP

- Empty the contents. Rinse with cold water. Wash with soapy water and a soft sponge if required. Dry thoroughly.

FILTER, FILTER, & FOAM FILTER

- Gently tap the filters to remove excess dust. Rinse under the tap until water runs clear. Allow to air dry completely.

VACUUM HEAD

- Clean with a soft, damp cloth.

CREVICE TOOL, SCRAPER, SMALL BRUSH, UPHOLSTERY NOZZLE

- Clean with a soft, damp cloth. Rinse with water if required.

SPRAY BOTTLE, SCRUBBER HEAD, PAD

- Clean with water or soapy water. Dry completely.

REPAIR

- This product does not contain any parts that can be repaired by the consumer. Contact a qualified specialist to have it checked and repaired.

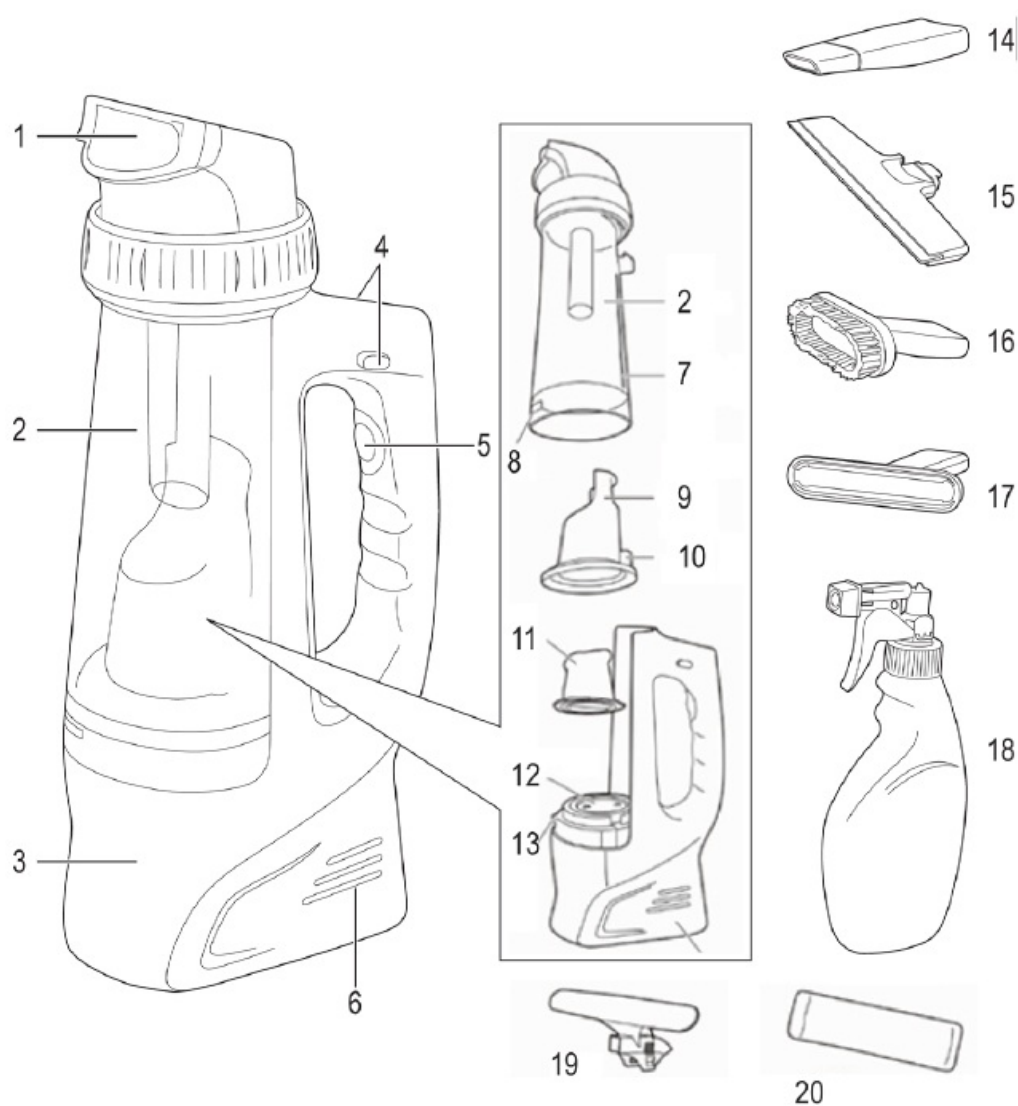
ENVIRONMENT

- Should your appliance need replacement after extended use, do not dispose of it with the household refuse, but in an environmentally safe way.
- Electronic devices are recyclable waste and must not be disposed of in the household waste. At the end of its service life, dispose of the product according to the relevant statutory regulations.
- Remove any rechargeable battery, if necessary, and dispose of it separately from the product.
- You must fulfill your statutory obligations and contribute to environmental protection.

KEY COMPONENTS LIST

1	AIR INLET / VACUUM HEAD (NOZZLE)
2	DUST CUP
3	MOTOR UNIT
4	DUST CUP RELEASE BUTTONS
5	ON/OFF BUTTON
6	AIR OUTLETS
7	GROOVE
8	NOTCH
9	FILTER HOLDER
10	RIB

11	FILTER
12	SPONGE FILTER
13	FRONT TAB
14	CREVICE TOOL
15	SCRAPER
16	SMALL BRUSH
17	UPHOLSTERY NOZZLE
18	SPRAY BOTTLE
19	SCRUBBER HEAD
20	SCRUBBER PAD



	<p>NORDIC CWC-L0118 18V Cordless Window Cleaner [pdf] User Manual</p> <p>POBA5380, CWC-L0118 18V Cordless Window Cleaner, CWC-L0118, 18V Cordless Window Cleaner, Cordless Window Cleaner, Window Cleaner, Cleaner</p>
--	---

References

- [User Manual](#)

[Manuals+](#), [Privacy Policy](#)

This website is an independent publication and is neither affiliated with nor endorsed by any of the trademark owners. The "Bluetooth®" word mark and logos are registered trademarks owned by Bluetooth SIG, Inc. The "Wi-Fi®" word mark and logos are registered trademarks owned by the Wi-Fi Alliance. Any use of these marks on this website does not imply any affiliation with or endorsement.