

[Home](#) » [NORDIC](#) » **NORDIC AM18051HDMI Wireless Display Transmitter and Receiver User Guide** 

Contents [[hide](#)]

- [1 NORDIC AM18051HDMI Wireless Display Transmitter and Receiver](#)
- [2 Introduction](#)
- [3 Installation](#)
- [4 Requirements](#)
- [5 Mechanical Requirements](#)
- [6 Documents / Resources](#)
 - [6.1 References](#)

NORDIC

NORDIC AM18051HDMI Wireless Display Transmitter and Receiver



Introduction

Brief

This document provides an overview of the requirements for the AM 18051 HDMI cale. It is a pair of Full HD wireless display transmitters & receiver. It integrates a powerful video encoder decoder and 5GhzWi-Fi 1110dule with high sensitivity antennas to provide the high-performance

Transmitter	
Main Chip	AM8360D
Model	AM18051HDMI cable Transmitter
Network	IEEE 802.11n 5GHz 1T1R
Interface	USB Type-C DP-ALT
Max. Resolution	1920×1080
Function	Screen Mirror/Extend
Color	White
Power	DC5V/0.5A

Receiver	
Model	AM18051HDMI cable Receiver
Main Chip	AM8268D
Network	IEEE 802.11n 5GHz 1T1R
Interface	HDMI
Max. Resolution	1920×1080
Function	Screen Mirror/Extend

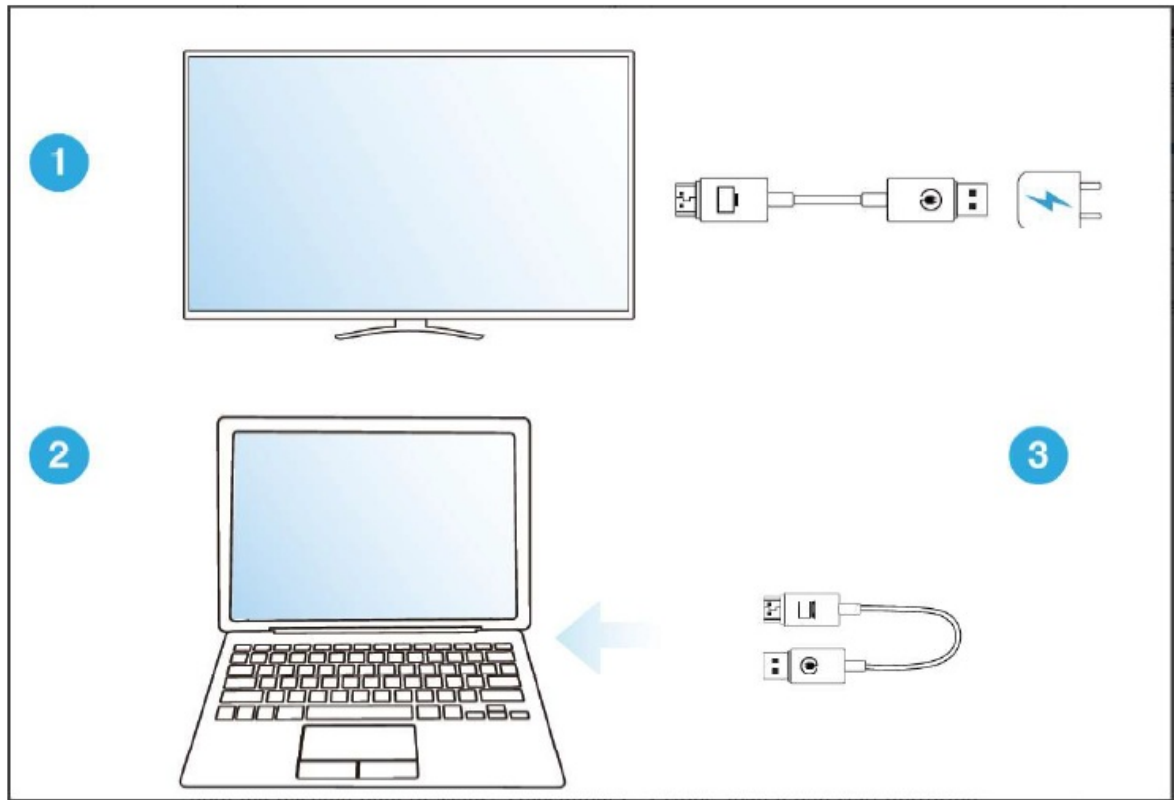
Color	White
Power	DC5V/0.5A

Product Feature

- Wi-Fi:
- IEEE 802.11n 5GHz ITIR
- Full HD Output
- Screen Mirror
- Screen Extend (Windows/macOS)
- Netflix App support (The standalone receiver cannot display DRM streaming)
- Proprietary Protocol
- Long Distance
- Low Power Consumption
- Low Latency
- CSA (Channel switch announcement) supported, auto channel switch if current channel jamming.

Installation

1.



Receiver : Connect Receiver to your TV and power on by an independent 5V/1A adapter.

2. Transmitter : Power and connect the HDMI connector to your
3. Laptop/MacBook/ Smart Phone supporting USB Type-C DP-Alt port. Wait a few seconds
4. until the flashing light of Transmitter stops, then it will start mirroring automatically.
5. Stop/Restart Mirror: Unplug/ Re-plug Transmitter to stop mirroring or restart mirroring

Manually Pair (If needed)

1. Turn on pairing mode for the receiver
 1. Power up the receiver by an external adapter (5 V 1A).
 2. Plug the receiver to the HDMI port on the monitor.
 3. Press the button through the pin hole on the receiver for 2 seconds. Release when the screen shows "Release the button to pair with".



2. Press the button on Transmitter
- Plug Transmitter on laptop to provide power. Press the button through the pine hole on Transmitter for 5 seconds to complete pairing while the screen shows



Requirements

The following sections is to identify the detailed requirements of the Transmitter and Receiver.

Hardware Specification

Blain Component

Transmitter	Hardware Component	Detailed Description
2.1.1.1	Main Chip	AM8360D
2.1.1.2	Wi-Fi	AM9421
Receiver		
2.1.1.4	Main Chip	AM8268D
2.1.1.5	Wi-Fi	AM9421

Hardware Interface

Transmitter	Feature	Detailed Description
-------------	---------	----------------------

2.1.2.1	HDMI Interface	HDMI 1.4a with HDCP 1.4
	USB Interface	Only for power input (5V/1A USB adapter)
2.1.2.2	Button (Pin hole)	Press 5s for pairing the Receiver as the
Receiver		
2.1.2.3	HDMI Interface	HDMI 1.4a with HDCP 1.4
2.1.2.4	USB Interface	Only for power input (5V/1A USB adapter)
2.1.2.5	Button (Pin hole)	Press 5s to start the pairing process

LED Indicator for

Transmitter	Status	Detailed Description
	Solid	Device is connected to RX successfully and is able to be operated properly.
	Blinking (Slow)	The device is ready and trying to connect to RX as Receiver is being connected up.

LED Light	Blinking (Fast)	The device is processing to pair with RX.
	Light off	The device has malfunctioned, OR no power input.
Receiver		
LED Light	Solid	Device is connected to 5V/1A power successfully.

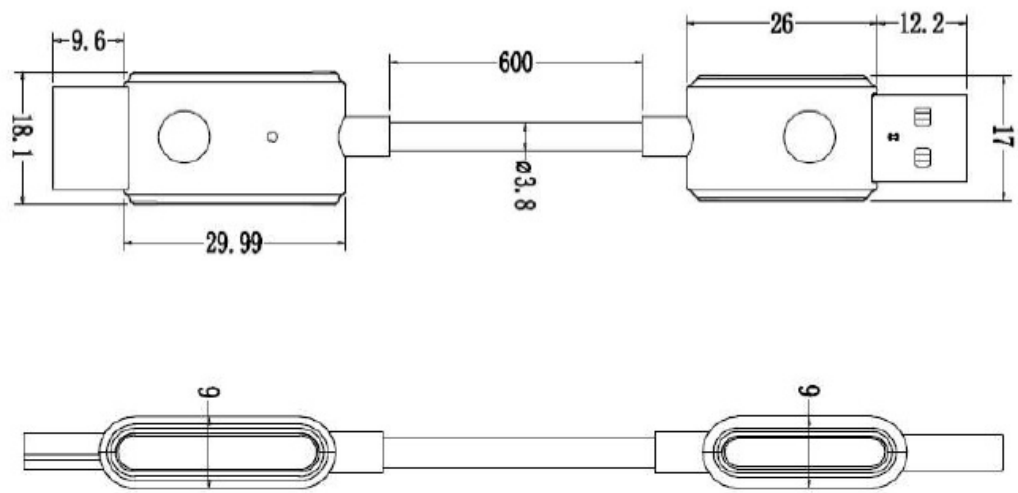
Electrical Characteristic

Transmitter	Feature	Detailed Description
2.1.4.1	Power Input	5V/0.5A
2.1.4.2	Power Consumption	2.5 W
Receiver		
2.1.4.3	Power Input	DC 5V/0.5A
2.1.4.4	Power Consumption	2.5W

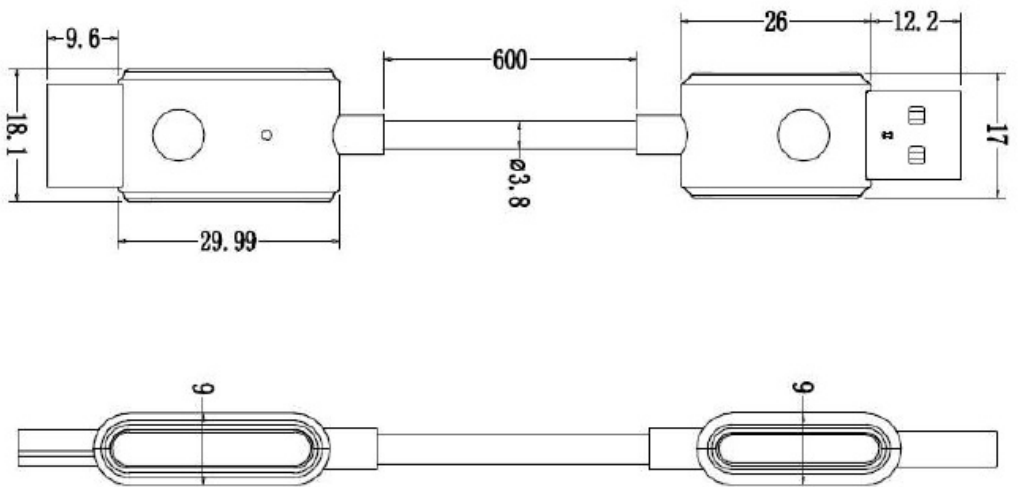
Mechanical Requirements

Dimension

Transmitter



Receiver



Package Specification


Transmitter	Feature	Detailed Description
2.2.2.1	Length	99mm
2.2.2.2	Width	18mm
2.2.2.3	Height	6mm
2.2.2.4	Weight	13g
Receiver		
2.2.2.5	Length	677mm
2.2.2.6	Width	17mm

2.2.2.7	Height	6mm
2.2.2.8	Weight	19g

Environmental Requirements

	Feature	Detailed Description
2.3.1	Operating Temperature Conditions	The product is capable of continuous reliable operation when operating in ambient temperature
2.3.2	Non-Operating Temperature Conditions	Neither subassemblies is damaged nor the operational performance be degraded when restored to the operating temperature after exposing to storage temperature in the range of – 2 to +70
2.3.3	Operating Humidity conditions	The product is capable of continuous reliable operation when subjected to relative humidity in the range of 10% and 90% non-condensing.
2.3.4	Non-Operating Humidity Conditions	The product is not be damaged nor the performance be degraded after exposure to relative humidity ranging from 5% to 90% non-condensing.

Documents / Resources

	<p>NORDIC AM18051HDMI Wireless Display Transmitter and Receiver [pdf]</p> <p>User Guide</p> <p>AM18051, AM18051HDMI Cable, AM18051HDMI Wireless Display Transmitter and Receiver, AM18051HDMI, Wireless Display Transmitter and Receiver, Display Transmitter and Receiver, and Receiver, Receiver</p>
---	--

References

- [User Manual](#)

■ NORDIC

🔍 AM18051, AM18051HDMI, AM18051HDMI Cable, AM18051HDMI Wireless Display Transmitter and Receiver, and Receiver, Display Transmitter and Receiver, NORDIC, Receiver, Wireless Display Transmitter and Receiver

Leave a comment

Your email address will not be published. Required fields are marked *

Comment *

Name

Email

Website

☐ Save my name, email, and website in this browser for the next time I comment.

Post Comment

Search:

e.g. whirlpool wrf535swhz

Search

This website is an independent publication and is neither affiliated with nor endorsed by any of the trademark owners. The "Bluetooth®" word mark and logos are registered trademarks owned by Bluetooth SIG, Inc. The "Wi-Fi®" word mark and logos are registered trademarks owned by the Wi-Fi Alliance. Any use of these marks on this website does not imply any affiliation with or endorsement.