

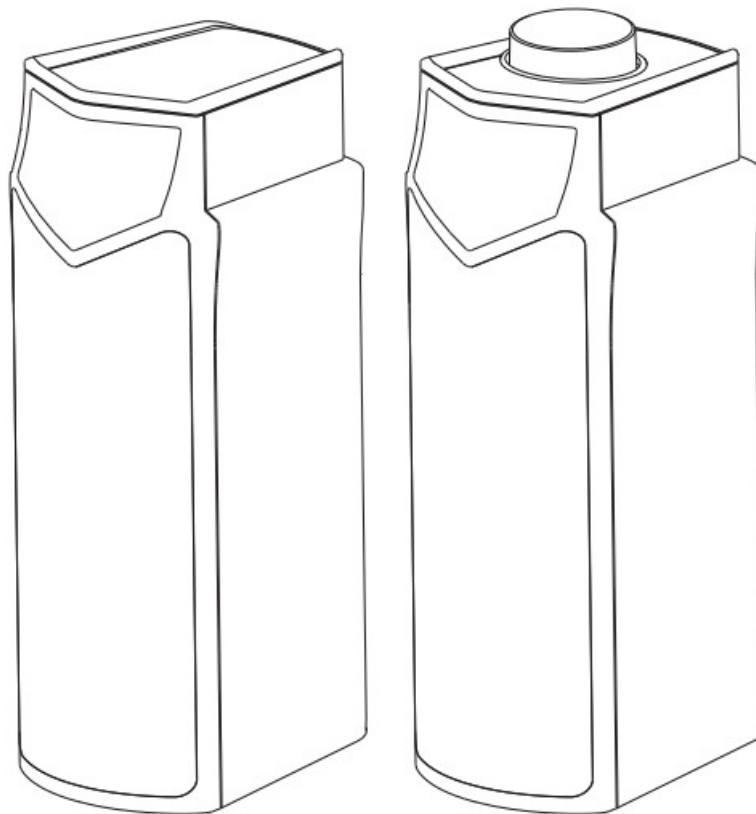


NOOTRY L1 Computer Speakers User Manual

[Home](#) » [NOOTRY](#) » NOOTRY L1 Computer Speakers User Manual 

NOOTRY

L1 Computer Speakers
User Manual



Contents

1 BUTTON COMMAND:

2 Cellphone, iPad, and Mobile Devices (Bluetooth Mode)

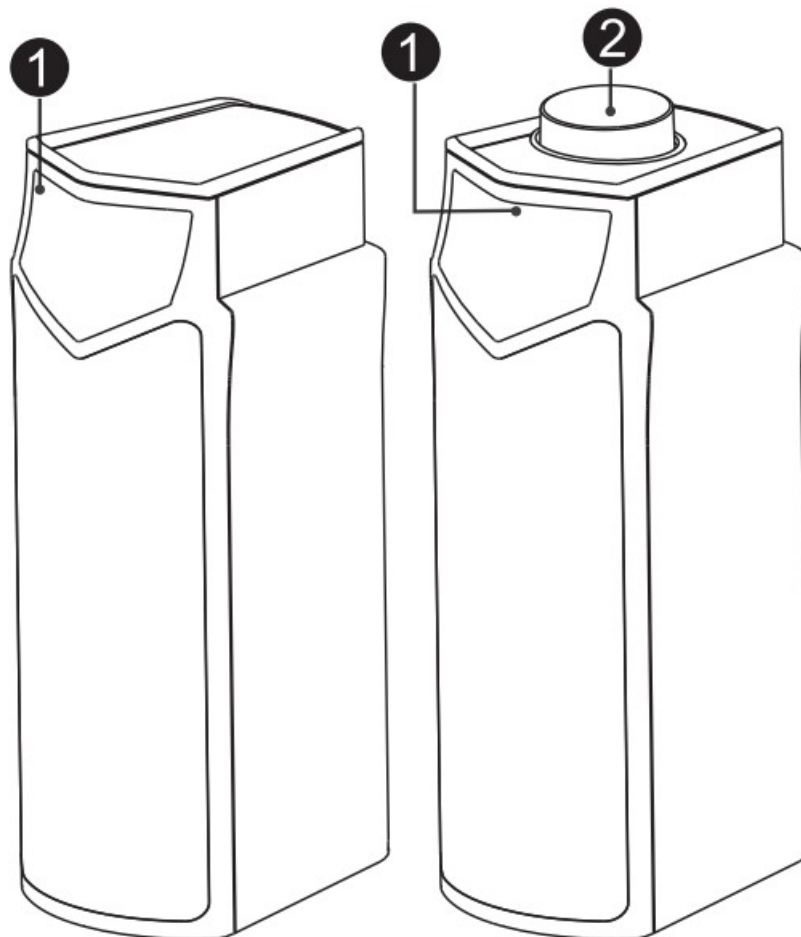
3 SPECIFICATIONS:

4 PACKAGE CONTENTS:

5 Documents / Resources

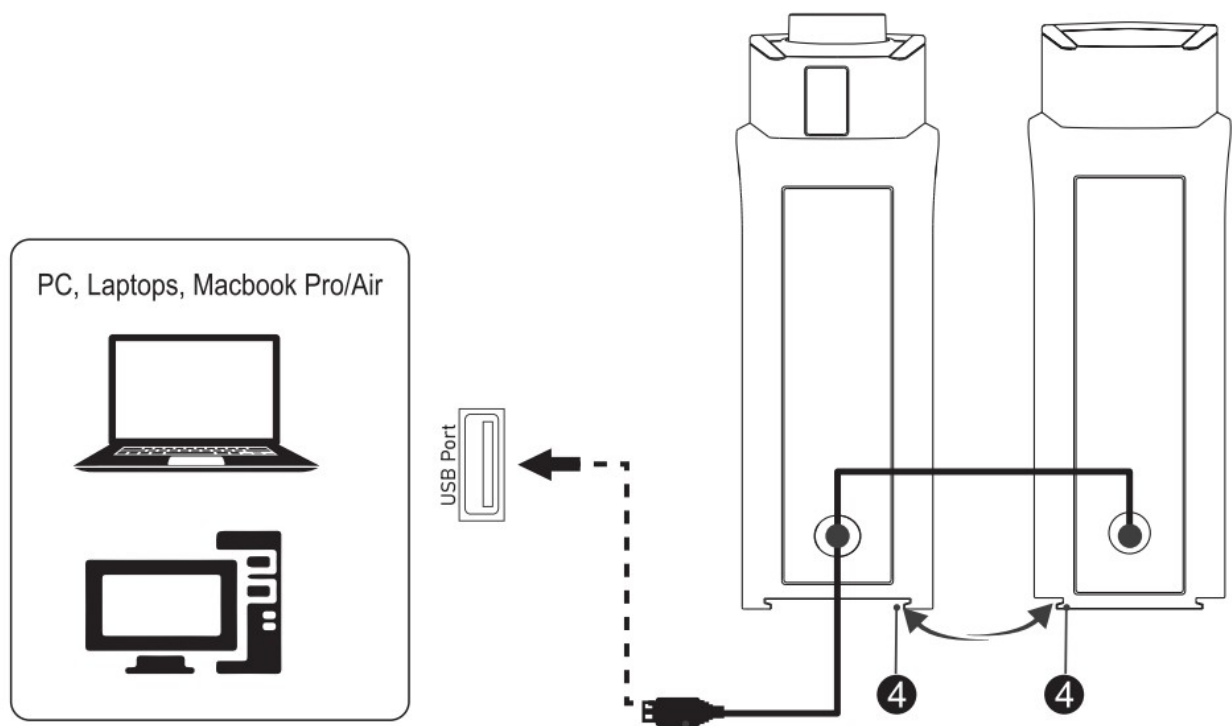
6 Related Posts

BUTTON COMMAND:



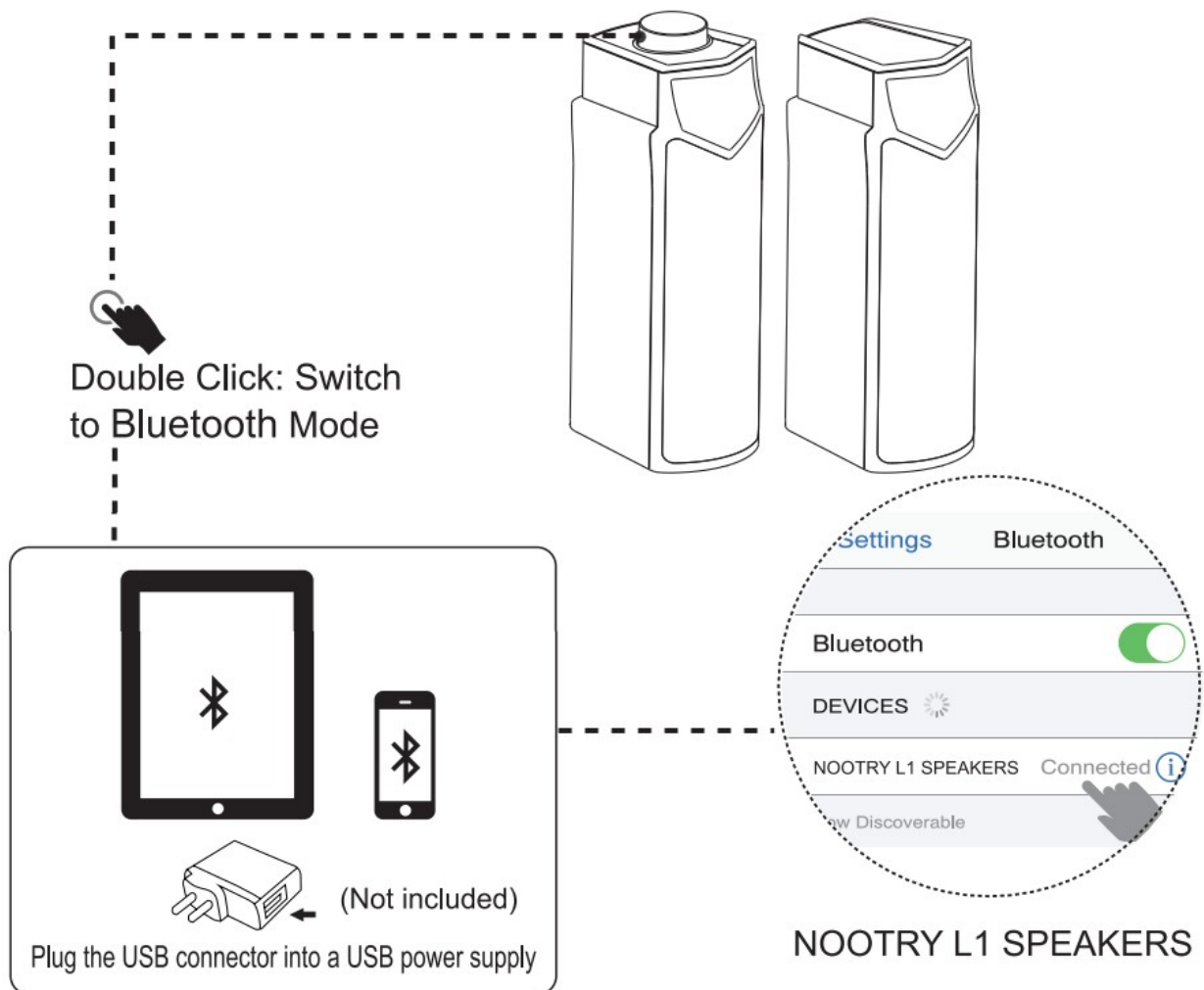
1. LED lighting effect
2. Multi-functional Button:
 - Long Press for 3 Seconds: Power ON/OFF
 - Double Click: Switch to Bluetooth/ USB Sound Card Mode
 - One Click: Change RGB Lighting Colors
 - Rotary Knob: Volume+/-
3. Audio Cable (USB-Powered Cable)
4. Slideway (Combine or Separate Each Speaker)

HOW TO SETUP: PC, Laptops, Macbook Pro/Air



1. Plug the USB connector into USB side ports on the computers;
2. Fix the settings: control panel/system preference – sound settings-choose “L1” as audio output – save changes.

Cellphone, iPad, and Mobile Devices (Bluetooth Mode)



1. Plug the USB connector into a USB power supply;
2. Double click the button to switch Bluetooth mode;
3. Turn On Bluetooth on your cellphones, search and select device name "L1" , connect it and pair.



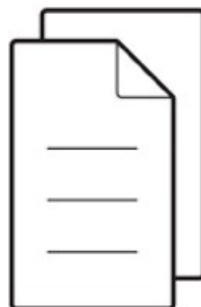
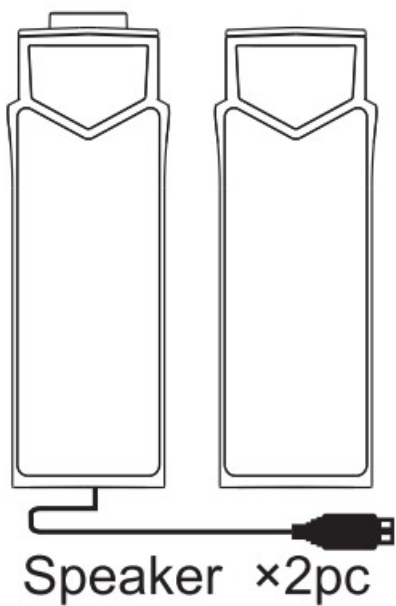
Note: This speaker adopts USB decoding. If the speaker is connected to your computer and there is no sound when playing music (not in silent mode), please go to the "Manage Audio Devices " of the computer control panel to find the audio device and switch it.

SPECIFICATIONS:

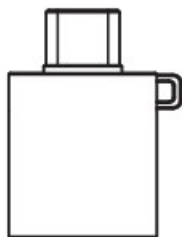
- Bluetooth Version: V5.3
- Bluetooth Receiving Distance: 515m
- Power Output (RMS): 6 W x 2
- Speaker Unit: 2"x2
- Frequency Range: 60Hz-20KHz
- Power Supply: USB 5V/1A to 2A (Not included)
- Product Size: W70xD93xH205mm

- Audio input: Bluetooth/USB Sound

PACKAGE CONTENTS:



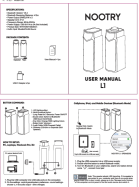
User Manual ×1pc



USB C Adapter x1pc

NOOTRY

Documents / Resources

	<p>NOOTRY L1 Computer Speakers [pdf] User Manual L1 Computer Speakers, L1, Computer Speakers, Speakers</p>
---	--