



NOMADIX EG 6000 Family Access Gateway User Guide

[Home](#) » [NOMADIX](#) » NOMADIX EG 6000 Family Access Gateway User Guide 

Contents

- [1 NOMADIX EG 6000 Family Access Gateway](#)
- [2 EG Family Quick Start Guide](#)
- [3 Included with each Edge Gateway](#)
- [4 Installation](#)
- [5 Initializing the Gateway](#)
- [6 Sample Network Setup](#)
- [7 Additional Documentation](#)
- [8 Documents / Resources](#)
 - [8.1 References](#)
- [9 Related Posts](#)

NOMADIX®

NOMADIX EG 6000 Family Access Gateway



EG Family Quick Start Guide

About this Guide

This Quick Start Guide provides instructions and reference material for getting started with the Nomadix Edge Gateway (EG) Products.

Documentation and Technical Support

For more detailed information about the individual gateways and all other Nomadix Product Documentation, User Guide, XML DTD, MIB and Radius Dictionary can be found using the following URL:

<http://www.nomadix.com/technical-support-documentation>

If you have any problems, please contact our technical support team at **+1.818.575.2590**, or via email: support@nomadix.com

Included with each Edge Gateway

The following is what is included with the Edge Gateway and optional items that can be ordered separately.

Included with the EG 1000		
Qty	Description	Comments
1	Power Cord for AC Adapter – TEKA-TE120300XX	Comes with multiple plugs for different jurisdictions
1	Bumper Kit for desktop installations.	
optional items available and sold separately		
	Part Number	Description
PMS	715-5001-001	EG-Series PMS Serial Interface Kit (Incl. cable and optical isolator)

Included with the EG 3000		
Qty	Description	Comments
1	Power Cord for AC Adapter – C5 to NEMA 5-15P – 1.8m – US/CA/MX/JP	Other countries are sold separately.
1	19" Rack Mount Brackets Kit and screws.	
1	Bumper Kit for desktop installations.	

optional items available and sold separately													
	Part Number	Description											
Country Specific Power Cables	715-4001-010	Power Cord for AC Adapter – C5 to CEE 7/7 – 1.8m – EU/RU											
	715-4001-011	Power Cord for AC Adapter – C5 to NEMA 5-15P – 1.8m – US/CA/MX/JP											
	715-4001-012	Power Cord for AC Adapter – C5 to BS 1363-1/SASO 2203:2003 – 1.8m – UK/IE/SG/HK/Arabia											
	715-4001-013	Power Cord for CN/AU/NZ/AR	A	Adapt	er	–	C	5	to	GB2099,	AS/NZS	3112	– 1.8m –
	715-4001-014	Power Cord for AC Adapter – C5 to SANS 164-3 – 1.8m – IN/ZA											
PMS	715-5001-001	EG-Series PMS Serial Interface Kit (Incl. cable and optical isolator)											

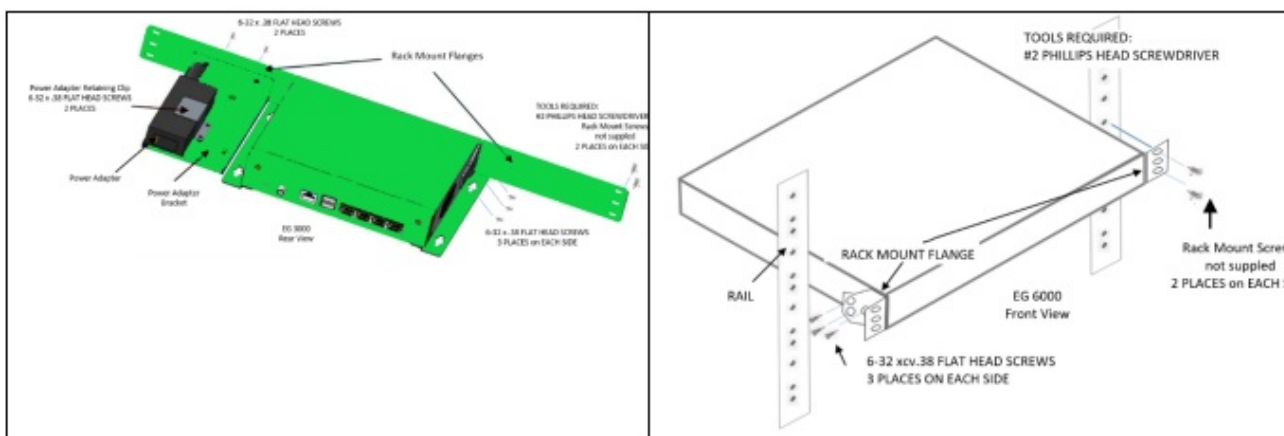
Included with the EG 6000		
Qty	Description	Comments
1	Power Cord – C13 to NEMA 5-15P – 1.8m – US/CA/MX/JP	Other countries are sold separately.
1	19” Rack Mount Brackets Kit and screws.	
1	Bumper Kit for desktop installations.	
optional Items available and sold separately		
	Part Number	Description
Country Specific Power Cables	715-4001-003	Power Cord – C13 to CEE 7/7 – 1.8m – EU/RU
	715-4001-004	Power Cord – C13 to NEMA 5-15P – 1.8m – US/CA/MX/JP
	715-4001-005	Power Cord – C13 to BS 1363-1/SASO 2203:2003 – 1.8m – UK/IE/SG/HK/Arabia
	715-4001-006	Power Cord – C13 to GB2099, AS/NZS 3112 – 1.8m – CN/AU/NZ/AR
	715-4001-007	Power Cord – C13 to SABS 164-1 – 1.8m – IN/ZA
PMS	715-5001-010	EG-Series PMS Serial Interface Kit

Installation

1. Unpack the Nomadix Edge Gateway and place the product on a flat and stable work surface.
2. Register the Gateway for support services by completing and returning the Nomadix Gateway Registration Form online at the following URL:
3. Install the Edge Gateway into the 19" rack. (EG 3000 or EG 6000 only)
- 4.
- 5.

Step #1	Install the Rack Mounting Flanges to each side of the EG 6000: using the (3) 6-32 flat head screws. Do not overtighten.	
Step #2	Using (4) 10-32 rack mounting screws, position the EG 6000 in the rack and secure to the vertical rails.	
EG 3000		EG 6000

6. Connect the AC mains power cord.
7. The Gateway is now ready for initialization



Initializing the Gateway

ETH1 Ethernet Port Connection

Configure the laptop's network setting to use the following Administration IP address settings

IP Address	Netmask	Gateway	DNS (if needed)
172.30.30.173	255.255.0.0	172.30.30.172	4.2.2.1

Attach the laptop to the Nomadix ETH1 or LAN port using an Ethernet cable and check the status as shown below.

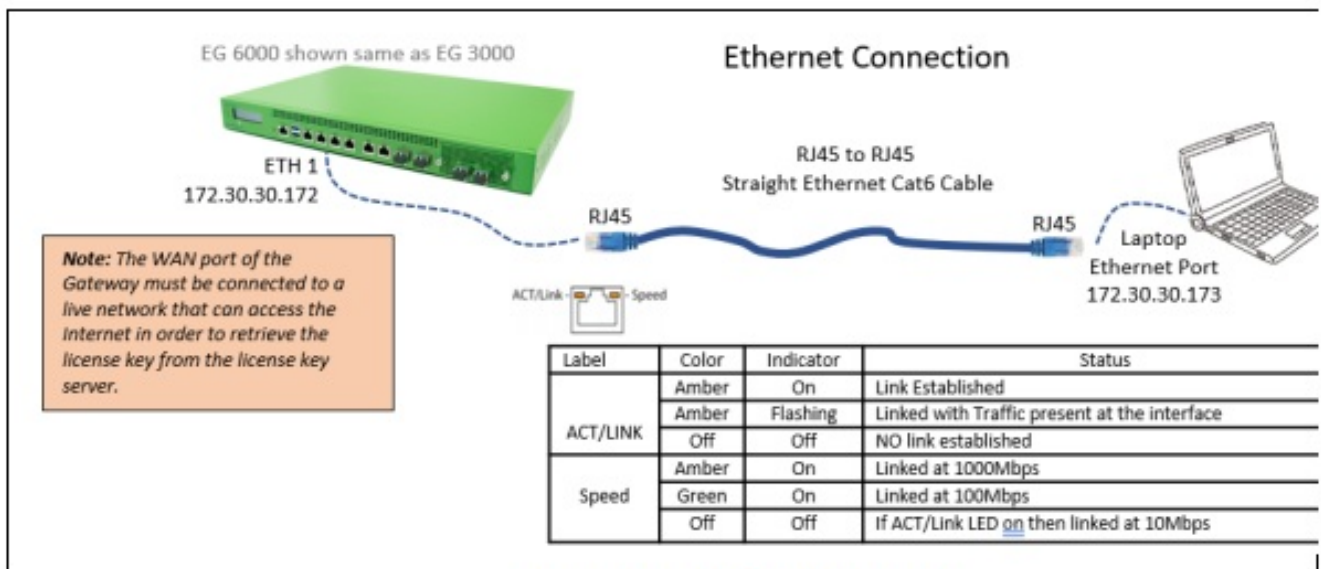


Figure 4: Ethernet Connection

On the PC/laptop open an SSH (Secure Shell) client connection using PuTTY, Hyperterm, Procomm (or equivalent) to the EG using the Gateway's default IP address 172.30.30.172. With everything connected and powered up, you are now ready to configure the Gateway's WAN for a static IP address, DHCP Client or PPPoE client using the appropriate configuration guidelines that follow in order to obtain the license key.

Go to Initial (startup) Configuration.

Once the key has been obtained, the web management interface (WMI) can be used to continue and finish the configuration.

Initial (startup) Configuration

Log in to the Gateway, by opening an SSH to 172.30.30.172 using the default Login= admin and password= admin. Type y[es] when prompted to configure settings.

The initial minimal WAN port configuration mode will be displayed as shown in Figure 3.

```
COM3 - PuTTY
Ready. Press enter to login.

NSE

Login: admin
Password: admin

NO LICENSE KEY HAS BEEN ENTERED. A LICENSE KEY MUST BE ENTERED
IN ORDER TO PROCEED WITH INSTALLATION.
SEE USER'S GUIDE FOR LICENSE KEY INFORMATION.

INSTALLATION WILL NOW TRY TO CONTACT THE NOMADIX LICENSE KEY SERVER.
IN ORDER TO PROCEED, THE NSE MUST BE ABLE TO CONNECT TO THE INTERNET.

DO YOU WANT TO CONFIGURE THE NSE'S IP AND DNS SETTINGS? [yes/no]: Y

Configuring minimal WAN interface connectivity parameters:
Configuration Mode [static] (static, dhcp, pppoe) :
```

Initial minimal WAN port configuration.

Select the desired configuration mode and use the following steps to configure the WAN port for either Static IP, DHCP client or PPPoE.

Step 1a: Static WAN IP Configuration

Accept static as the default configuration mode and enter the following mandatory settings shown in Figure 4.

```
COM3 - PuTTY
NO LICENSE KEY HAS BEEN ENTERED.  A LICENSE KEY MUST BE ENTERED
IN ORDER TO PROCEED WITH INSTALLATION.
SEE USER'S GUIDE FOR LICENSE KEY INFORMATION.

INSTALLATION WILL NOW TRY TO CONTACT THE NOMADIX LICENSE KEY SERVER.
IN ORDER TO PROCEED, THE NSE MUST BE ABLE TO CONNECT TO THE INTERNET.

DO YOU WANT TO CONFIGURE THE NSE'S IP AND DNS SETTINGS? [yes/no]: y

Configuring minimal WAN interface connectivity parameters:
Configuration Mode      [static      ] (static, dhcp, pppoe) : 5
IP Address              [67.130.148.85 ] : Enter WAN Ports IP Address
Subnet Mask             [255.255.255.0 ] : Enter WAN Ports Subnet Mask
Gateway IP Address      [67.130.148.254] : Enter WAN Ports Gateway IP Address
WAN 802.1Q tagging      [Disabled   ] :
VLAN ID                 [1          ] :
DNS Domain Name         [nomadix2.com] :
DNS IPv4 Server 1       [67.130.148.253] : Enter Primary DNS IP Address
DNS IPv4 Server 2       [8.8.8.8     ] :
DNS IPv4 Server 3       [216.146.35.35] :
DNS IPv6 Server 1       [::         ] :
DNS IPv6 Server 2       [::         ] :
DNS IPv6 Server 3       [::         ] :
```

Figure 4: Initial WAN port settings

A WAN port summary page will then be displayed as shown in Figure 5.

```
COM3 - PuTTY

Port Name                : WAN
Port Label               : WAN
Port Role                : wanIf
IPv6                     : Disabled
Configuration Mode       : static
IP Address               : IP Address entered
Subnet Mask              : Subnet Mask entered
Gateway IP Address       : Gateway IP Address entered
WAN 802.1Q tagging       : Disabled
VLAN ID                  : 1
DNS Domain Name          : nomadix2.com
DNS IPv4 Server 1        : DNS IP Address entered
DNS IPv4 Server 2        : 8.8.8.8
DNS IPv4 Server 3        : 216.146.35.35
DNS IPv6 Server 1        : ::
DNS IPv6 Server 2        : ::
DNS IPv6 Server 3        : ::
Additional NAT IP addresses : Disabled

  show all                - Show all WAN Interface configuration
  show interface <name>   - Show a single WAN Interface configuration
  modify interface <name> - Modify a single WAN Interface configuration

Type b to go back, <esc> to abort, ? for help.

Ethernet port/WAN interface configuration>
```

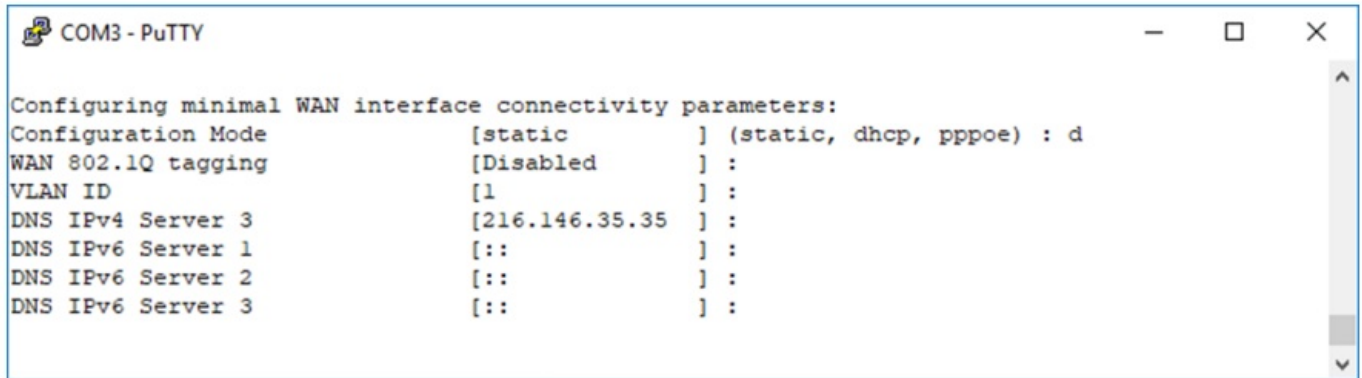
WAN port static IP configuration summary page

If everything is correct in the summary, type b[ack] to return to the previous menu and proceed to Step 2 to enter the location information.

Otherwise, select an option from the Ethernet port configuration menu to display or make changes to the WAN port settings. When finished with the settings, type b[ack] to return to the previous menu and proceed to Step 2 to enter the location information.

Step 1b: DHCP Client Configuration

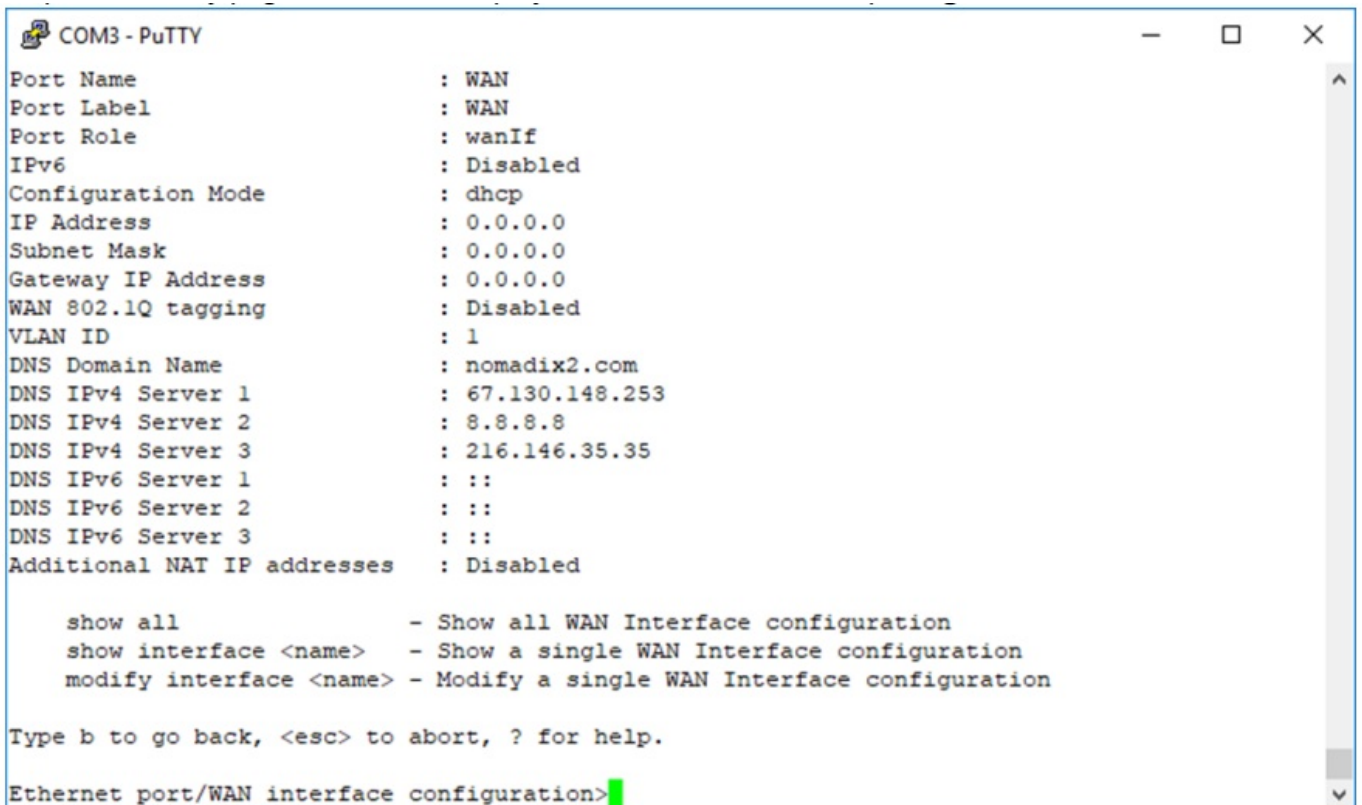
Type d[hcp] for the configuration mode as shown in Figure 6.



```
COM3 - PuTTY

Configuring minimal WAN interface connectivity parameters:
Configuration Mode      [static      ] (static, dhcp, pppoe) : d
WAN 802.1Q tagging      [Disabled   ] :
VLAN ID                 [1          ] :
DNS IPv4 Server 3       [216.146.35.35] :
DNS IPv6 Server 1       [::        ] :
DNS IPv6 Server 2       [::        ] :
DNS IPv6 Server 3       [::        ] :
```

Figure 6: Selecting DHCP Client for WAN configuration



```
COM3 - PuTTY

Port Name                : WAN
Port Label               : WAN
Port Role                : wanIf
IPv6                     : Disabled
Configuration Mode       : dhcp
IP Address               : 0.0.0.0
Subnet Mask              : 0.0.0.0
Gateway IP Address       : 0.0.0.0
WAN 802.1Q tagging       : Disabled
VLAN ID                  : 1
DNS Domain Name          : nomadix2.com
DNS IPv4 Server 1        : 67.130.148.253
DNS IPv4 Server 2        : 8.8.8.8
DNS IPv4 Server 3        : 216.146.35.35
DNS IPv6 Server 1        : ::
DNS IPv6 Server 2        : ::
DNS IPv6 Server 3        : ::
Additional NAT IP addresses : Disabled

  show all                - Show all WAN Interface configuration
  show interface <name>   - Show a single WAN Interface configuration
  modify interface <name> - Modify a single WAN Interface configuration

Type b to go back, <esc> to abort, ? for help.

Ethernet port/WAN interface configuration>
```

WAN port DHCP client configuration summary page

If everything is correct in the summary, type b[ack] to return to the previous menu and proceed to Step 2 to enter the location information.

Otherwise, select an option from the Ethernet port configuration menu to display or make changes to the WAN port settings. When finished with the settings, type b[ack] to return to the previous menu and proceed to Step 2 to enter the location information.

Step 1c: PPPoE Dynamic IP Client Configuration

Enter p[ppoe] when prompted. Enter the following mandatory settings for a PPPoE connection with dynamic PPP IP configuration shown in Figure 8.

```
COM3 - PuTTY

Ethernet port/WAN interface configuration>b

Please enter your Company Name      [Nomadix]           ]: enter company name
Please enter your Site Name         [USLAXDOCOM-USG2]    ]: enter site name
Please enter your Address (Line 1)  [30851 Agoura Rd.]   ]: enter address
                                   (Line 2) [           ]:
                                   (City)  [Agorua Hills] ]:
                                   (State) [CA]           ]:
                                   (ZIP/Postal Code) [91301] ]:
                                   (Country) [USA]        ]: enter country

Please select the venue type that most reflects your location
  1. Apartment
  2. Bar/Coffeeshop/Restaurant
  3. Convention Center
  4. Corporate Guest Access
  5. Education
  6. Hospitality
  7. Marina/Camp Ground
  8. Public Space
  9. Public Transport
 10. Airport
 11. Truckstop / Rest Area
 12. Car Rental Facility
 13. Club
 14. Health Club
 15. Bar
 16. Retail Business
 17. Marina
 18. Arena
 19. Theatre
 20. Metro Area / HotZone
 21. Indoor Public Space / Hospital / Museum / Library
 22. Gas Station
 23. Resort
 24. Lab / Test
 25. Other

Please enter a number from the above list [ 6]: 6
```

Figure 8: Selecting PPPoE with dynamic IP configuration

A WAN port summary page will then be displayed as shown in Figure 9.


```
COM3 - PuTTY
Port Name           : WAN
Port Label          : WAN
Port Role           : wanIf
IPv6                : Disabled
Configuration Mode   : pppoe
IP Address          : 0.0.0.0
Subnet Mask         : 0.0.0.0
Gateway IP Address  : 0.0.0.0
PPPoE Service Name  :
LCP Echo-Request Interval : 30
Maximum LCP Non-responses : 6
PPP Authentication User Name :
PPP Authentication Password :
PPP IP Configuration Mode : dynamic
PPP Static IP Address : 0.0.0.0
PPP Maximum TCP MSS : 1452
WAN 802.1Q tagging  : Disabled
VLAN ID             : 10
DNS Domain Name     : nomadix2.com
DNS IPv4 Server 1   : 67.130.148.253
DNS IPv4 Server 2   : 8.8.8.8
DNS IPv4 Server 3   : 216.146.35.35
DNS IPv6 Server 1   : ::
DNS IPv6 Server 2   : ::
DNS IPv6 Server 3   : ::
Additional NAT IP addresses : Disabled

show all             - Show all WAN Interface configuration
show interface <name> - Show a single WAN Interface configuration
modify interface <name> - Modify a single WAN Interface configuration

Type b to go back, <esc> to abort, ? for help.

Ethernet port/WAN interface configuration>
```

WAN port PPPoE client configuration summary page

Step 1d: PPPoE Static IP Client Configuration

Use the same steps for configuring dynamic PPPoE shown in Figure 8 above, but select static for PPP IP Configuration Mode, and enter your IP address for PPP Static IP Address. A summary page similar to Figure 9 above will be displayed. If everything is correct in the summary, type b[ack] to return to the previous menu and proceed to Step 2 to enter the location information. Otherwise, select an option from the Ethernet port configuration menu to display or make changes to the WAN port settings. When finished with the settings, type b[ack] to return to the previous menu and proceed to Step 2 to enter the location information.

Step 2: Entering Your Location Information

You will be required to enter location information to obtain the license key. Enter the following mandatory location information details

```
COM3 - PuTTY

Ethernet port/WAN interface configuration>b

Please enter your Company Name      [Nomadix]           ]: enter company name
Please enter your Site Name        [USLAXDOCOM-USG2]    ]: enter site name
Please enter your Address (Line 1) [30851 Agoura Rd.]   ]: enter address
                                   (Line 2) [          ]:
                                   (City)  [Agorua Hills] ]:
                                   (State) [CA]           ]:
                                   (ZIP/Postal Code) [91301] ]:
                                   (Country) [USA]        ]: enter country

Please select the venue type that most reflects your location
 1. Apartment
 2. Bar/Coffeeshop/Restaurant
 3. Convention Center
 4. Corporate Guest Access
 5. Education
 6. Hospitality
 7. Marina/Camp Ground
 8. Public Space
 9. Public Transport
10. Airport
11. Truckstop / Rest Area
12. Car Rental Facility
13. Club
14. Health Club
15. Bar
16. Retail Business
17. Marina
18. Arena
19. Theatre
20. Metro Area / HotZone
21. Indoor Public Space / Hospital / Museum / Library
22. Gas Station
23. Resort
24. Lab / Test
25. Other

Please enter a number from the above list [ 6]: 6
```

Step 3: Retrieving Your License Key

The system will now prompt you to accept or decline the End User License Agreement (EULA). You must accept the terms of the EULA before the Edge Gateway can retrieve its license key. To retrieve the license key, enter y[es] as shown in Figure 11. The EG retrieves the license key from the Nomadix license key server, then reboots.

```
COM3 - PuTTY

Configuring minimal WAN interface connectivity parameters:
Configuration Mode      [static] (static, dhcp, pppoe) : d
WAN 802.1Q tagging      [Disabled] :
VLAN ID                 [1] :
DNS IPv4 Server 3       [216.146.35.35] :
DNS IPv6 Server 1       [::] :
DNS IPv6 Server 2       [::] :
DNS IPv6 Server 3       [::] :
```

License key retrieval.

NOTE: The date and time the gateway receives a valid license from our server for the first time is considered the Software License Subscription start date.

Step 4: Configuring the System

Log in to the Edge Gateway and use the graphical Web Management Interface (WMI) to configure the product's features. You have now established a basic configuration for the EG that enables internet connectivity.

For additional information about the available EG features, refer to Chapter 2 of the User Guide specific to your EG. For example:

- To establish various billing and authentication methods, see Defining the AAA Services.
- To establish hotel billing, see Assigning a PMS Service.

Step 5: Configuring EG DHCP Server Settings

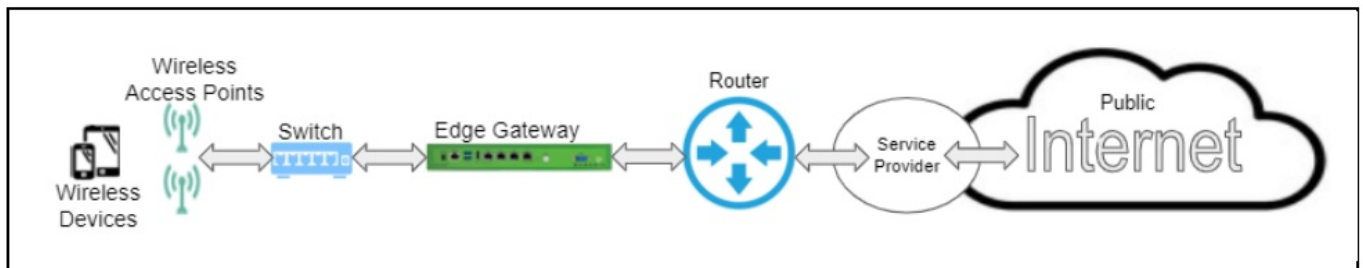
DHCP Server is enabled by default. To configure the DHCP Server, go to DHCP under the Configuration menu. You can either modify the default DHCP pool, add additional pools or delete the default DHCP pool and create a new pool. The total lease pool size recommendation is 75% more than the number of licensed subscribers. Table 3 shows the factory default DHCP server settings.

DHCP Parameters	Your Settings	Default Values
DHCP Services (Disable)		no
DHCP Relay (Yes / No) <i>If No, skip to DHCP Server</i>		no
DHCP Relay Server IP Address		blank
DHCP Relay Agent IP Address		blank
DHCP Server (Yes / No) <i>Only if the DHCP Relay is disabled</i>		yes
DHCP Server IP Address		10.0.0.4
DHCP Server Subnet Mask		255.255.255.0

DHCP Pool Start IP Address		10.0.0.12
DHCP Pool End IP Address		10.0.0.72
DHCP Lease Minutes		1440

Sample Network Setup

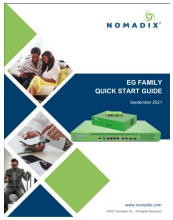
An example of a basic network including the Edge Gateway is shown in Figure 10.



Additional Documentation

Additional Product documentation can be found at: <http://www.nomadix.com/technical-support-documentation>
Nomadix Product Documentation

Documents / Resources



[NOMADIX EG 6000 Family Access Gateway](#) [pdf] User Guide EG 6000 Family Access Gateway

References

- [Networking Technology Solutions for Hotels & MDUs | Nomadix](#)
- [Internet Gateway Technical Support Documentation | Nomadix](#)
- [Product Registration - Nomadix](#)

Manuals+