



## NOKIA SU-42 Power Keyboard User Guide

[Home](#) » [Nokia](#) » NOKIA SU-42 Power Keyboard User Guide 

### NOKIA SU-42 Power Keyboard User Guide



## Contents

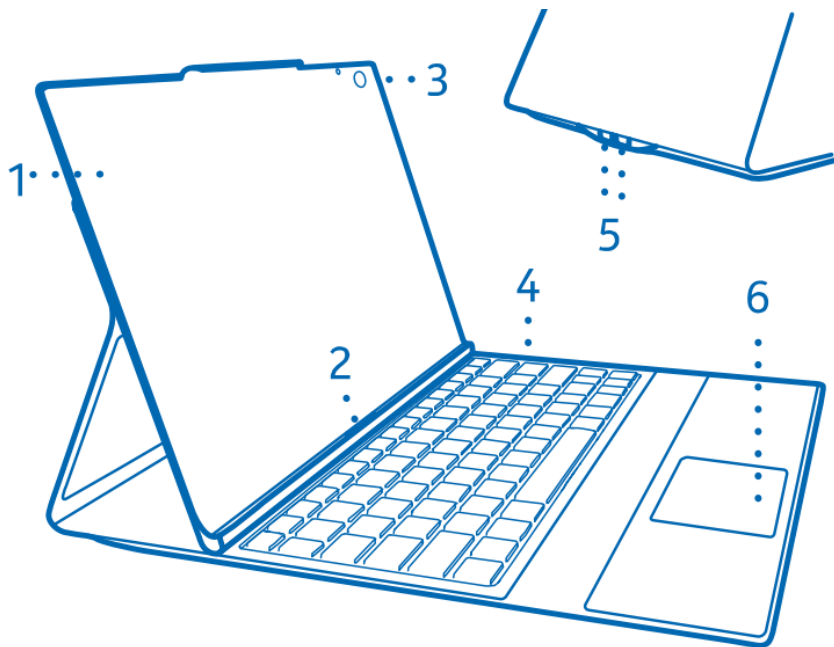
- 1 About your tablet cover
- 2 Parts
- 3 Fold the cover open
- 4 Dock and undock the tablet
- 5 Charge the cover battery
- 6 Product and safety information
- 7 Battery and charger info
- 8 Battery and charger safety
- 9 Copyrights and other notices
  - 9.1 Warranty
- 10 Documents / Resources
  - 10.1 References
- 11 Related Posts

## About your tablet cover

Get to know your new Nokia Power Keyboard. With the Nokia Power Keyboard, you can:

- Protect your tablet from bumps and scratches
- Type with the physical keyboard and use the touchpad – just like with a laptop
- Get additional power from your cover's battery when your tablet battery runs out

## Parts



Get to know your tablet cover.

- 1. Tablet holder
- 2. Keyboard dock
- 3. Camera and microphone window
- 4. Keyboard
- 5. USB connectors

## 6. Touchpad

This cover is compatible with the Nokia tablet.

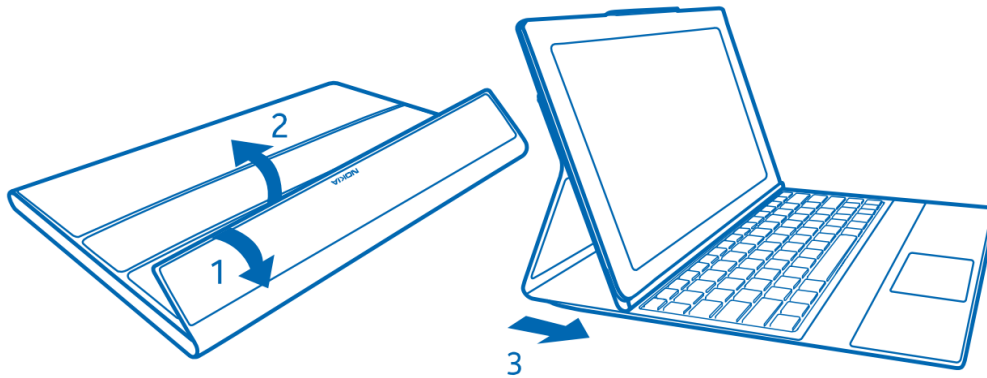
A compatible charger is not provided with the cover. It comes with the tablet.

Parts of the device are magnetic. Metallic materials may be attracted to the device. Do not place credit cards or other magnetic storage media near the device, because info stored on them may be erased.

The surface of this product is nickel-free.

Some of the accessories mentioned in this user guide may be sold separately.

### Fold the cover open



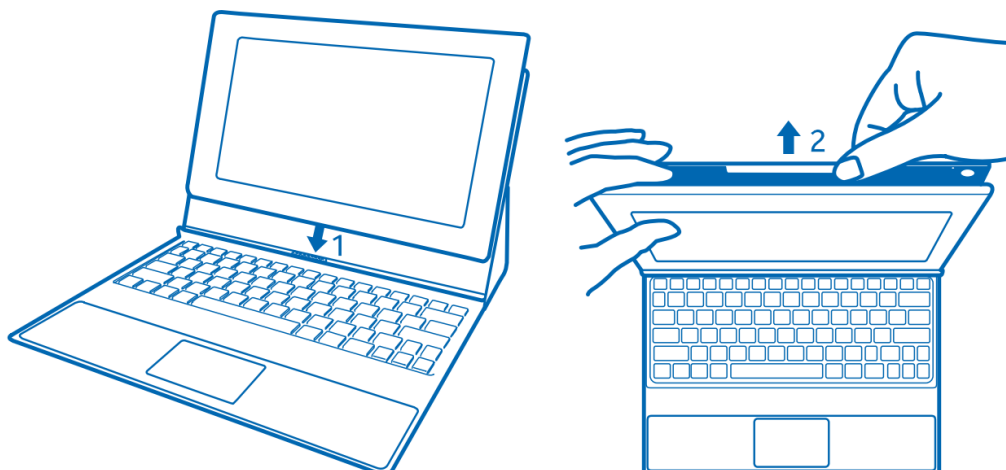
Not in the way when you don't need it, but ready in a snap – it's easy to open and close your cover.

1. Open the cover flap.
2. Open the tablet holder.
3. Lock the tablet holder into place so that the keyboard dock is next to the keyboard.

### Dock and undock the tablet

Turn your Nokia tablet into a laptop, and stretch the battery time further.

1. To dock your tablet, slide the tablet into the holder so that the dock connectors are aligned. Push the top edge of the tablet gently toward the holder until it locks into place.
2. To undock your tablet, put a finger between the tablet and the tablet holder, and pull the holder away from the tablet.



Your tablet uses the cover battery, and switches to use the tablet battery only after the cover battery is empty. Do not fold your tablet holder under the keyboard, as it may damage the cover.

## Charge the cover battery

The battery of your tablet running low? The battery inside the Nokia Power Keyboard gives you extra hours. Dock the tablet to the cover.

1. Connect the charger to a wall outlet.
2. Connect the charger cable to the tablet.



When charging, the tablet battery is charged first, then the cover battery.

## Product and safety information

### Take care of your device

- Keep the device dry. Precipitation, humidity, and all types of liquids or moisture can contain minerals that corrode electronic circuits. If your device gets wet, let the device dry.
- Do not use or store the device in dusty or dirty areas.
- Do not store the device in high temperatures. High temperatures may damage the device or battery.
- Do not store the device in cold temperatures. When the device warms to its normal temperature, moisture can form inside the device and damage it.
- Do not open the device.
- Unauthorized modifications may damage the device and violate regulations governing radio devices.
- Do not drop, knock, or shake the device. Rough handling can break it. If you believe the battery or charger is damaged, take it to a service center for inspection before continuing to use it.
- Only use a soft, clean, dry cloth to clean the surface of the device.

### Recycle



Always return your used electronic products, batteries, and packaging materials to dedicated collection points. This way you help prevent uncontrolled garbage disposal and promote the recycling of materials. All materials of

the device can be recovered as materials and energy. Check how to recycle your Nokia products at [www.nokia.com/recycle](http://www.nokia.com/recycle).

For more info on recycling, see "Mobile Phone Recycling Explained in 2 Minutes" [www.youtube.com/watch?v=jD5yLicr6Js](http://www.youtube.com/watch?v=jD5yLicr6Js).

## **Battery and charger info**

Your device has an internal, non-removable, rechargeable battery. Do not attempt to remove the battery, as you may damage the device.

Nokia may make additional battery or charger models available for this device.

Only use the battery with a charging system that has been qualified with the system per CTIA Certification Requirements for Battery System Compliance to IEEE 1625.

## **Battery and charger safety**

To unplug a charger or an accessory, hold and pull the plug, not the cord.

When your charger is not in use, unplug it. If left unused, a fully charged battery will lose its charge over time. Always keep the battery between 59°F and 77°F (15°C and 25°C) for optimal performance. Extreme temperatures reduce the capacity and lifetime of the battery. A device with a hot or cold battery may not work temporarily. Do not dispose of batteries in a fire as they may explode. Obey local regulations. Recycle when possible. Do not dispose as household garbage.

Do not dismantle, cut, crush, bend, puncture, or otherwise damage the battery in any way. If a battery leaks, do not let liquid touch skin or eyes. If this happens, immediately flush the affected areas with water, or seek medical help. Do not modify, attempt to insert foreign objects into the battery, or immerse or expose it to water or other liquids. Batteries may explode if damaged.

Use the battery and charger for their intended purposes only. Improper use, or use of unapproved or incompatible batteries or chargers may present a risk of fire, explosion, or other hazard, and may invalidate any approval or warranty. If you believe the battery or charger is damaged, take it to a service center before continuing to use it. Never use a damaged battery or charger. Only use the charger indoors.

## **Copyrights and other notices**

### **DECLARATION OF CONFORMITY**

Hereby, NOKIA CORPORATION declares that this SU-42 product is in compliance with the essential requirements and other relevant provisions of Directive 2004/108/EC.

The availability of products may vary by region. For more info, contact your Nokia dealer. This device may contain commodities, technology or software subject to export laws and regulations from the US and other countries. Diversion contrary to law is prohibited.

THE CONTENTS OF THIS DOCUMENT ARE PROVIDED "AS IS". EXCEPT AS REQUIRED BY APPLICABLE LAW, NO WARRANTIES OF ANY KIND, EITHER EXPRESS OR IMPLIED, INCLUDING, BUT NOT LIMITED TO, THE IMPLIED WARRANTIES OF MERCHANTABILITY AND FITNESS FOR A PARTICULAR PURPOSE, ARE MADE IN RELATION TO THE ACCURACY, RELIABILITY OR CONTENTS OF THIS DOCUMENT. NOKIA RESERVES THE RIGHT TO REVISE THIS DOCUMENT OR WITHDRAW IT AT ANY TIME WITHOUT PRIOR NOTICE.

TO THE MAXIMUM EXTENT PERMITTED BY APPLICABLE LAW, UNDER NO CIRCUMSTANCES SHALL NOKIA OR ANY OF ITS LICENSORS BE RESPONSIBLE FOR ANY LOSS OF DATA OR INCOME OR ANY SPECIAL, INCIDENTAL, CONSEQUENTIAL OR INDIRECT DAMAGES HOWSOEVER CAUSED.

Reproduction, transfer or distribution of part or all of the contents in this document in any form without the prior written permission of Nokia is prohibited. Nokia operates a policy of continuous development. Nokia reserves the right to make changes and improvements to any of the products described in this document without prior notice.

Nokia does not provide a warranty for or take any responsibility for the functionality, content, or end-user support of third-party apps provided with your device. By using an app, you acknowledge that the app is provided as is. Nokia does not make any representations, provide a warranty, or take any responsibility for the functionality, content, or end-user support of third-party apps provided with your device.

## FCC/INDUSTRY CANADA/MEXICO NOTICE



This device complies with part 15 of the FCC rules and Industry Canada license-exempt RSS standard(s). Operation is subject to the following two conditions: (1) This device may not cause harmful interference, and (2) this device must accept any interference received, including interference that may cause undesired operation. Any changes or modifications not expressly approved by Nokia could void the user's authority to operate this equipment.

**Note:** This equipment has been tested and found to comply with the limits for a Class B digital device, pursuant to part 15 of the FCC Rules. These limits are designed to provide reasonable protection against harmful interference in a residential installation.

This equipment generates, uses and can radiate radio frequency energy and, if not installed and used in accordance with the instructions, may cause harmful interference to radio communications. However, there is no guarantee that interference will not occur in a particular installation. If this equipment does cause harmful interference to radio or television reception, which can be determined by turning the equipment off and on, the user is encouraged to try to correct the interference by one or more of the following measures:

- Reorient or relocate the receiving antenna.
- Increase the separation between the equipment and receiver.
- Connect the equipment into an outlet on a circuit different from that to which the receiver is connected.
- Consult the dealer or an experienced radio/TV technician for help.

TM & © 2013 Nokia. All rights reserved. Third party products/names may be TMs of their respective owners.

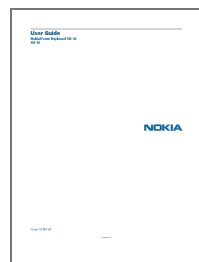
## Warranty

The warranty period Nokia provides for this product is 12 months. For details please visit the local Nokia online warranty text **web site** : [www.nokia.com/support](http://www.nokia.com/support).

© 2013 Nokia. All rights reserved.

The image shows the Nokia logo, which is the word 'NOKIA' in a bold, blue, sans-serif font. The letters are evenly spaced and have a clean, modern look.

## Documents / Resources

	<p><a href="#">NOKIA SU-42 Power Keyboard</a> [pdf] User Guide SU-42, SU-42 Power Keyboard, Power Keyboard, Keyboard</p>
---	--

## References

- [📄 Nokia and HMD phones support](#)
- [📄 Support | Nokia](#)
- [User Manual](#)

[Manuals+](#), [Privacy Policy](#)

This website is an independent publication and is neither affiliated with nor endorsed by any of the trademark owners. The "Bluetooth®" word mark and logos are registered trademarks owned by Bluetooth SIG, Inc. The "Wi-Fi®" word mark and logos are registered trademarks owned by the Wi-Fi Alliance. Any use of these marks on this website does not imply any affiliation with or endorsement.