




NODOR 8552 Eclipse Instruction Manual

[Home](#) » [NODOR](#) » NODOR 8552 Eclipse Instruction Manual 

Contents

- [1 NODOR 8552 Eclipse](#)
- [2 Product Information](#)
- [3 Product Usage Instructions](#)
- [4 Tools](#)
- [5 Dimensions](#)
- [6 Installation Instructions](#)
- [7 Using Instructions](#)
- [8 CARE & MAINTENANCE](#)
- [9 FAQs](#)
- [10 Contact](#)
- [11 Documents / Resources](#)
 - [11.1 References](#)
- [12 Related Posts](#)



NODOR 8552 Eclipse



Product Information

This is a ventilation hood product, designed to remove cooking smells and provide air circulation in the kitchen. It features multiple speed settings and a built-in light for visibility during cooking. The product also includes aluminum filters for trapping grease and can be used in both extraction and recirculation modes. The hood is powered by electricity and should be installed following the manufacturer's instructions.

Product Usage Instructions

To use the ventilation hood, follow these steps:

1. Ensure the electricity supply is switched off before performing any maintenance or installation work on the hood.
2. If the hood is not installed properly on the brackets and causing excessive vibration, take down the appliance and check that it is properly fixed.
3. If the fan blade is damaged or the fan motor is not fixed tightly, switch off the appliance and contact qualified service personnel for repair.
4. If the light is on but the fan does not work, there may be a jammed fan blade or a damaged motor. Switch off the appliance and contact qualified service personnel for repair.
5. If both the light and motor do not work, check the power connection for any loose connections. If necessary, contact Customer Services to check the power supply.
6. If the suction performance is reduced, try selecting a higher speed. If the issue persists, clean the aluminum filters according to the care and maintenance section of the user manual.
7. If there is an obstruction in the top vent, clear it. If an optional vent kit is installed, ensure it is fitted correctly according to the manufacturer's instructions.
8. If cooking smells linger even though the hood works normally, check if the carbon filter is fitted in recirculation mode or if it is full of grease. Fit or replace the carbon filter as necessary.
9. If the hood still does not work after checking all the points mentioned above, contact the technical service or your distributor for further assistance.

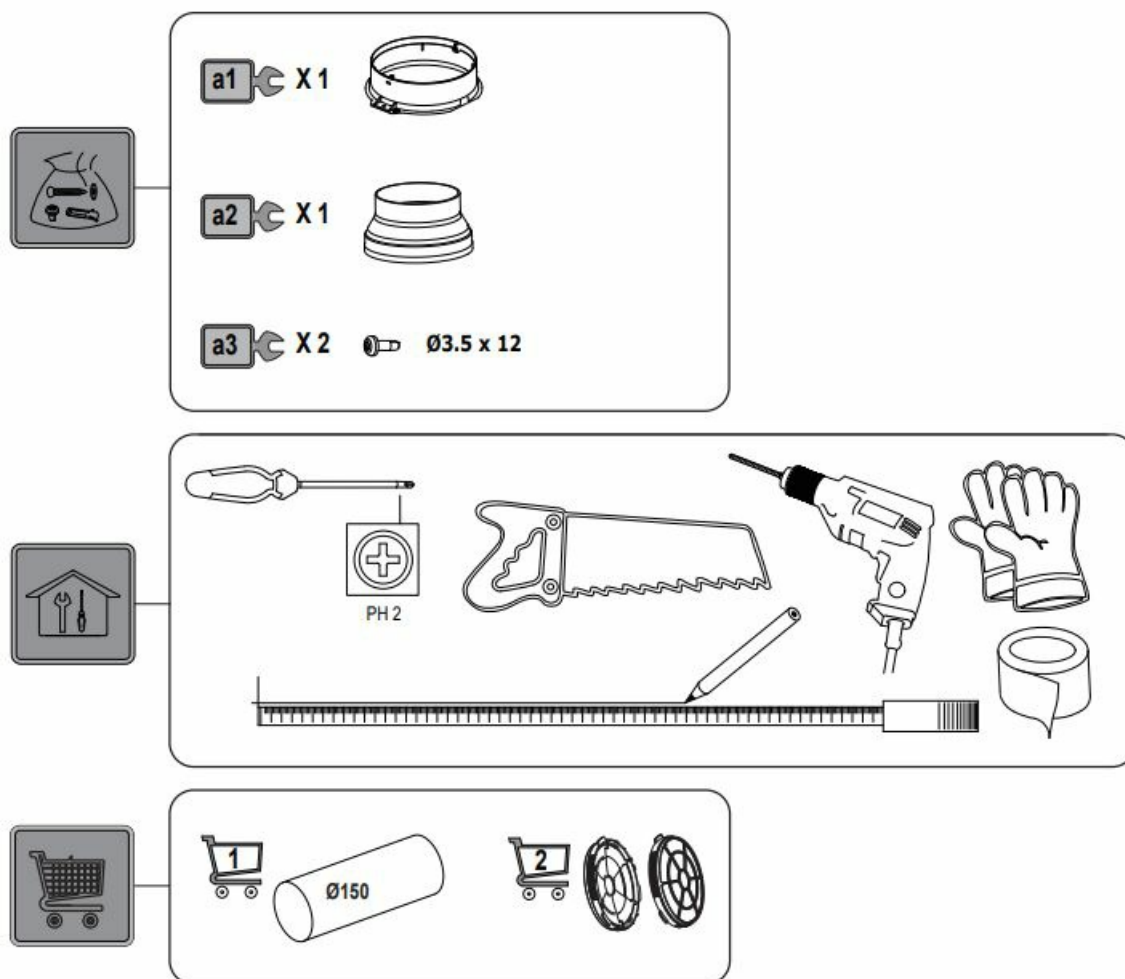
For additional information or assistance, you can contact the importer at the following telephone numbers: +(36-1) 427 0325, +(36-1) 427-0326, or fax: +(36-1) 427 0327. You can also visit their website at www.multikomplex.hu.

Please note that the provided information is based on the text-extract from the user manual and may not cover all aspects of product usage. For complete and accurate instructions, refer to the official user manual provided with

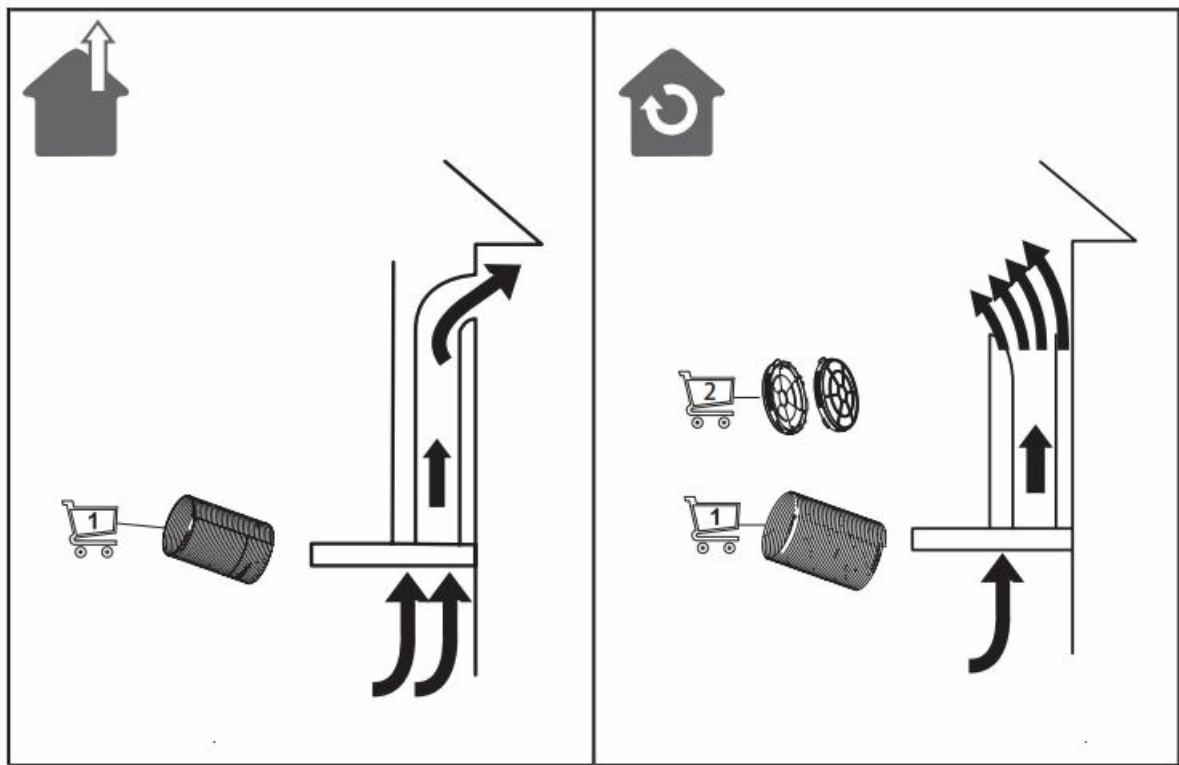
the product.

IMPORTANT: Please read carefully the separate safety guide before use.

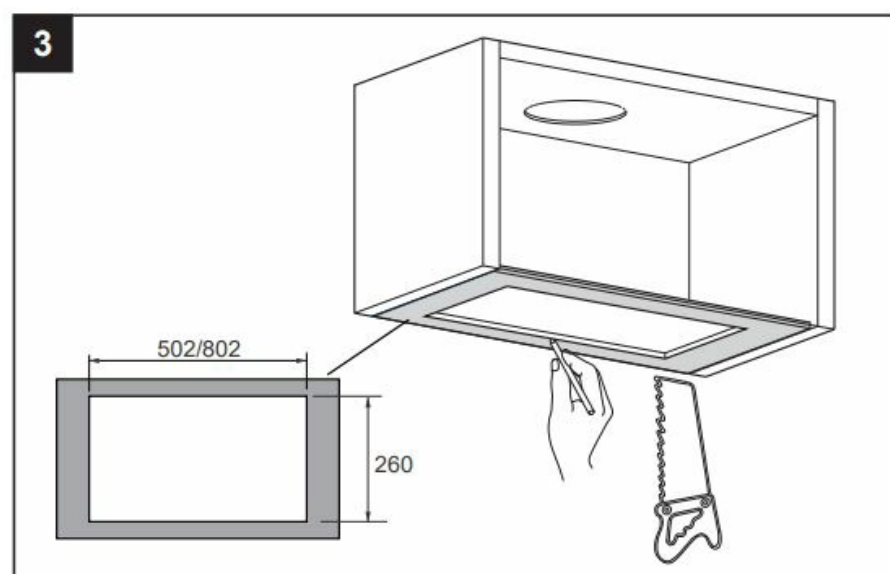
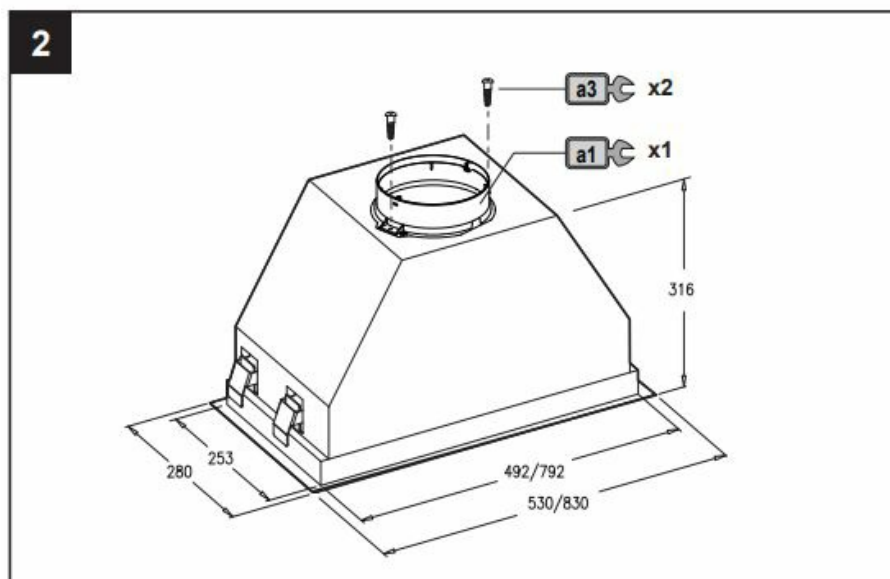
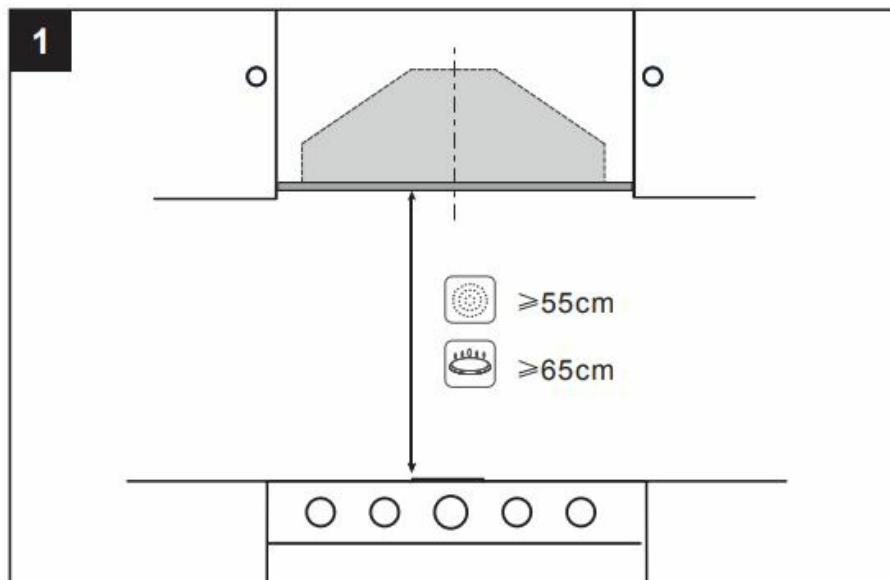
Tools



Warning

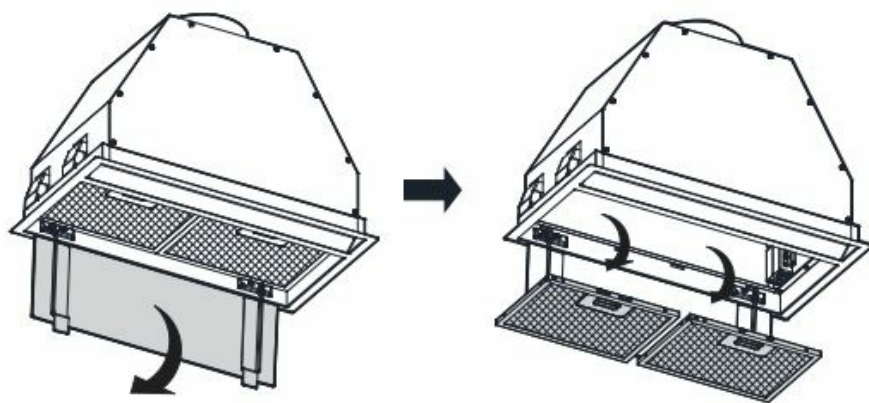


Dimensions

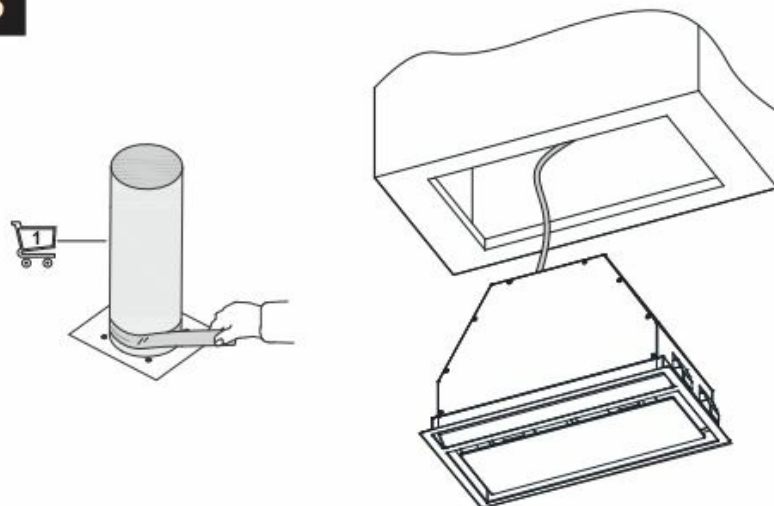


Installation Instructions

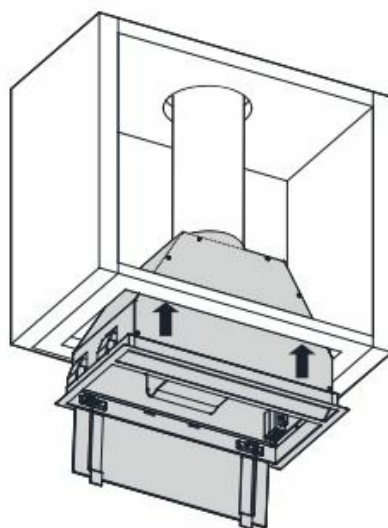
4

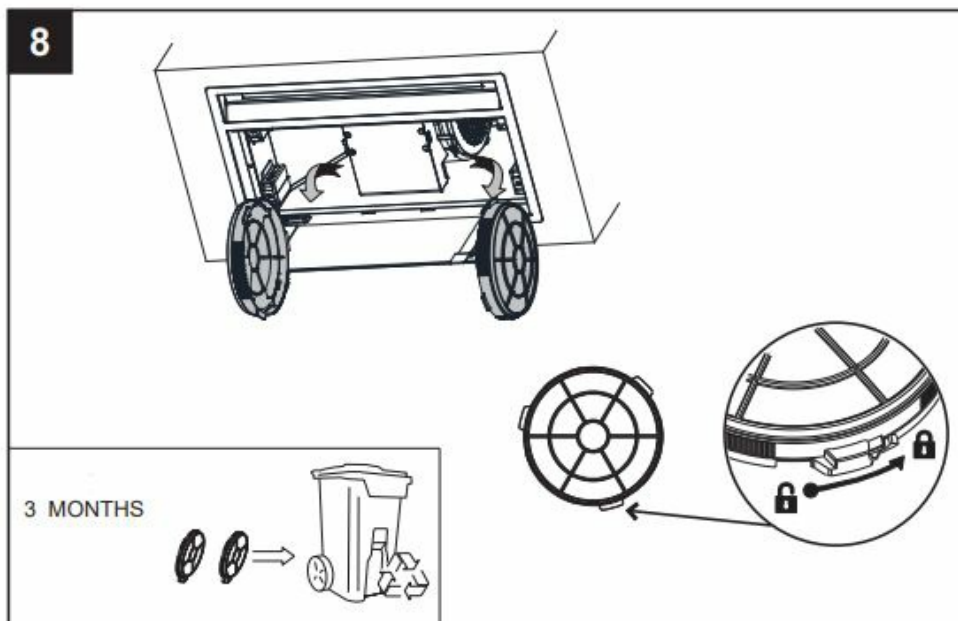
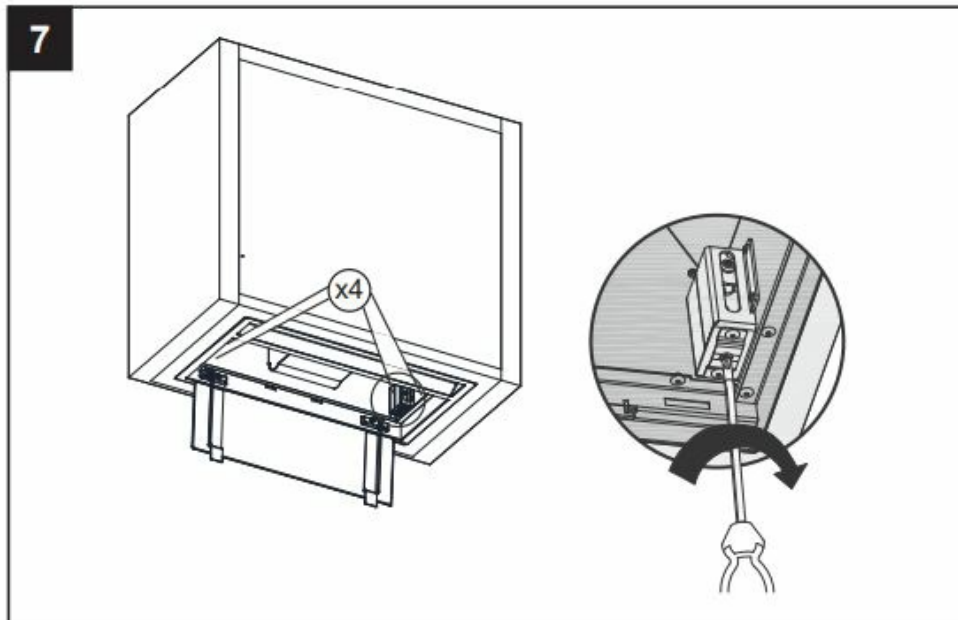


5



















6





Using Instructions

       	
	Filter clean warning display/button. Warning of the need to replace the filter – press to deactivate once the filter has been cleaned or replaced.
	Enable and disable extractor fan timer. Timer: the extractor fan works for 5 min. at the current speed and another 5 min. at each of the lower speeds until it stops.
	Lighting on and off. Keep pressed down to adjust the lighting intensity.
	Extractor fan on and off.
	Extractor fan speed – button: speed 1, 2 and 3/4. In panels with MAX button, MAX speed only will work during 5 minutes, once it runs out, the speed will decrease to 3rd speed.
	
	
	

CARE & MAINTENANCE

Warning: always switch off the electricity supply before carrying out maintenance work on the hood. In the event of a fault, contact an official distributor or authorised dealer.

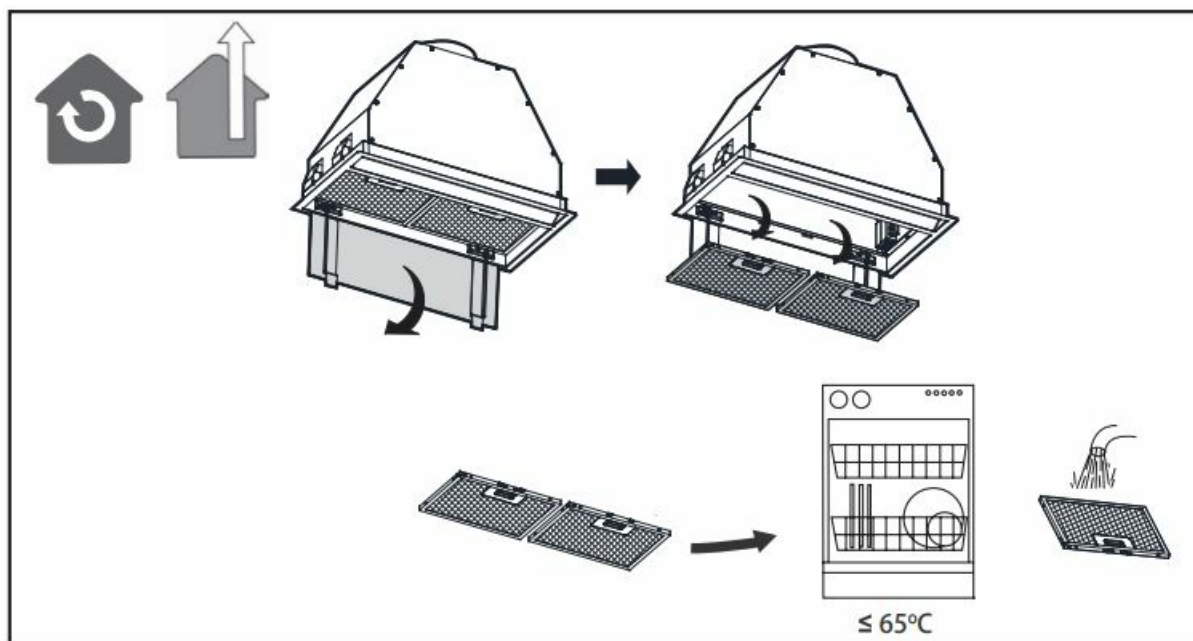
Cleaning the outside: use liquid, non-corrosive detergent and avoid using abrasive cleaning products and solvents. Do not use high-pressure or steam cleaning devices.

Important: increase the filter cleaning/replacement frequency if the hood is used for more than 2 hours a day. Always use genuine filters from the manufacturer.

Grease cleaning

To avoid fires, clean thoroughly once a month or whenever the display pilot light indicates as such. To do so, remove the filters and wash with hot water and detergent. If using a dishwasher (metal parts may turn black without this affecting their functional capacity), load the filters vertically to avoid solid residue from being deposited.

1 MONTH



FAQS

Problem	Possible cause	Solution
Excessive vibration.	The appliance is not installed properly on the brackets.	Take down the appliance and check it is properly fixed.
	The fan blade is damaged.	Switch off the appliance. Repair to be carried out by qualified service personnel only.
	The fan motor is not fixed tightly.	
The light is on, but the fan does not work.	The fan blade is jammed.	
	The motor is damaged.	
Both the light and motor do not work.	Light bulb blown.	Contact Customer Services on.
	Power connection loose.	Check power supply.
Suction performance reduced.	Speed may be too low.	Select a higher speed.
	Aluminium filters are dirty.	Clean the aluminum filters. (See Care and maintenance section).
	Top vent might be obstructed.	Clear any obstruction.
	Optional vent kit might be twisted.	Ensure that the vent kit is fitted according to the manufacturer's instructions.
	The installation may not comply with the manufacturer's instructions.	The vent hose should be correct diameter throughout with no reductions or restriction. (See installation section).
Works normally but cooking smells linger.	Carbon filter is not fitted in recirculation mode or is full of grease.	Fit carbon filter or replace the carbon filter (See Care and maintenance section).
The hood does not work.	Check that the hood is connected to power. Check that the fuses or automatic have not jumped.	
The hood still does not work.	If, after having checked the points mentioned above, your problem has not yet been solved, contact the technical service or your distributor.	

Contact


Importer

- MULTIKOMPLEX BUDAPEST LTD.
- The range hood expert... since 1995
- H-1211 Budapest Mansfeld Péter utca 27 (Former Bajáki Ferenc Street)
- **phone:** +(36-1) 427 0325, +(36-1) 427-0326;
- **fax:** +(36-1) 427 0327
- www.multikomplex.hu

TASTING APPLIANCES, S.L.

- **Offices:** c/ Anabel Segura, 11, Building A, 3a pl. 28108. Alcobendas. Madrid. Spain
- **Factory:** c/ del Ter 2, Apdo. 9. 08570. Torelló.Barcelona. Spain
- **T.** +34 938 594 100
- **Fax:** +34 938 594 101
- www.cnagroup.es
- cna@cnagroup.es
- **Customer Service:** 902 410 450 / +34 938 521 818 – info@cnagroup.es
- **SAT Central Portugal:** +351 214 349 771 – service@junis.pt

Documents / Resources

	<p>NODOR 8552 Eclipse [pdf] Instruction Manual 502-802, 8552 Eclipse, 8552, Eclipse</p>
---	---

References

-  [Fóoldal - Multikomplex](#)