



Nobsound MC1024 Way Microphone Headset Speaker Audio Switch Instruction Manual

[Home](#) » [Nobsound](#) » Nobsound MC1024 Way Microphone Headset Speaker Audio Switch Instruction Manual 

Nobsound MC1024 Way Microphone Headset Speaker Audio Switch



Contents

- 1 Introduction
- 2 Warm tips
- 3 Usage diagram(MCI 024-BOX)
- 4 Usage diagram(MCI 024)
- 5 Usage diagram(MCI 023)
- 6 Parameters
- 7 Contact information
- 8 Documents / Resources
 - 8.1 References

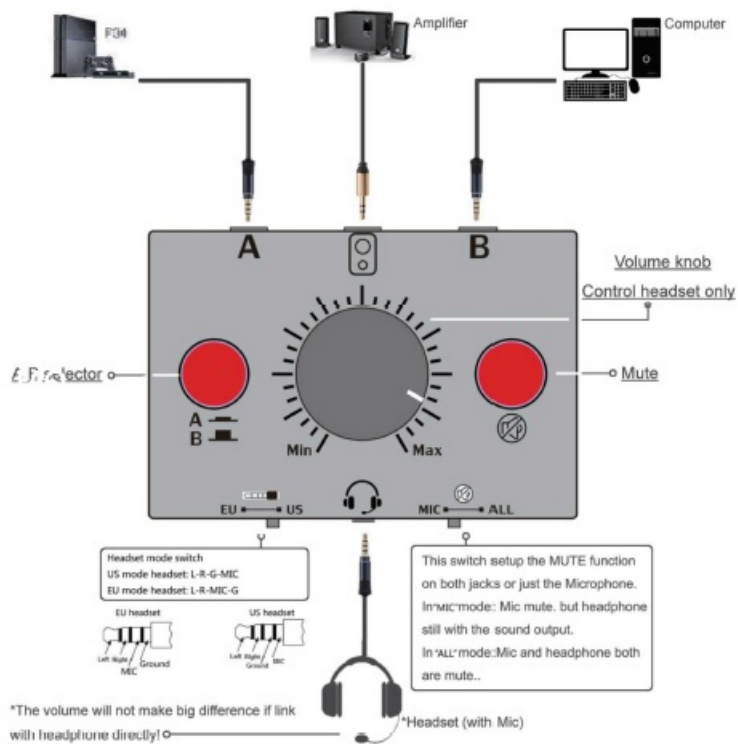
Introduction

- MC1023/MC1024/MC1024-BOX is a 2-way speaker/headphone switcher box with lull function, just need to connect audio sources such as computer, phone, game consoles, etc. to its A/B inputs, and connect headphones (also support headphones with microphone), amplifiers or speakers to its outputs. Via the A/B selector, you can quickly switch between two audio inputs without plugging in and out audio cables repeatedly.
- With volume control & One key mute, with a volume knob to adjust the volume, also supports mute the microphone alone or mute both the microphone and headphones, it's practical that you can mute your mic and hear others at the same time when playing games or at meetings.
- Multi-scene use: when playing games, you can switch between gaming computers and consoles at will, making it more flexible and convenient to use; for work meetings, supporting real-time interaction between multiple devices; for online chatting, you can switch between computers or mobile phones with each other.
- Compact design: with a compact structure and shape, sturdy and durable, equipped with enough cables and a set of feet for easy carrying on the desktop or outdoors; powerful and cost-effective.

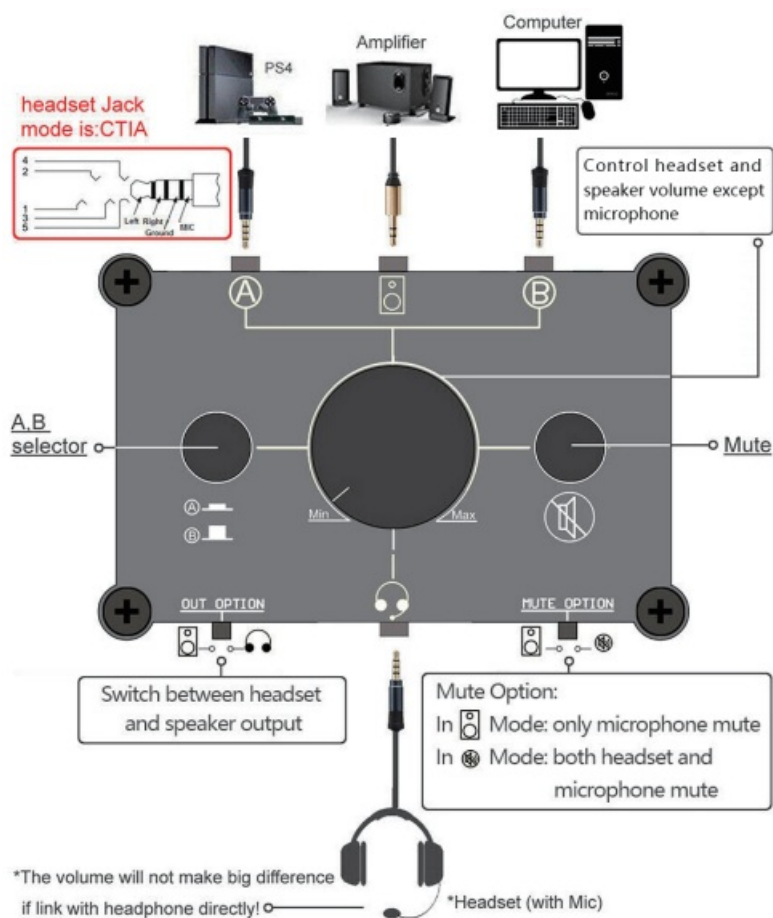
Warm tips

1. The A and B channels of MCI 023/MCI 024/MCI 024-BOX are connected to the common ground. In some cases, there may be some common ground noise generated when connecting two audio devices at the same time.
2. When switching the active speaker output to the headphone output via OUT OPTION switch, if there are some noise from the active speaker, it is not caused by the item itself but because the active speaker is no load.
3. For MC1024-BOX version, the 3.5mm headphone output with priority, the speaker output (3.5mm interface between A/B) will be auto disconnected when a headphone is plugged.
4. The volume knob only can control the volume of speakers and headphones, but cannot control the volume of microphones.

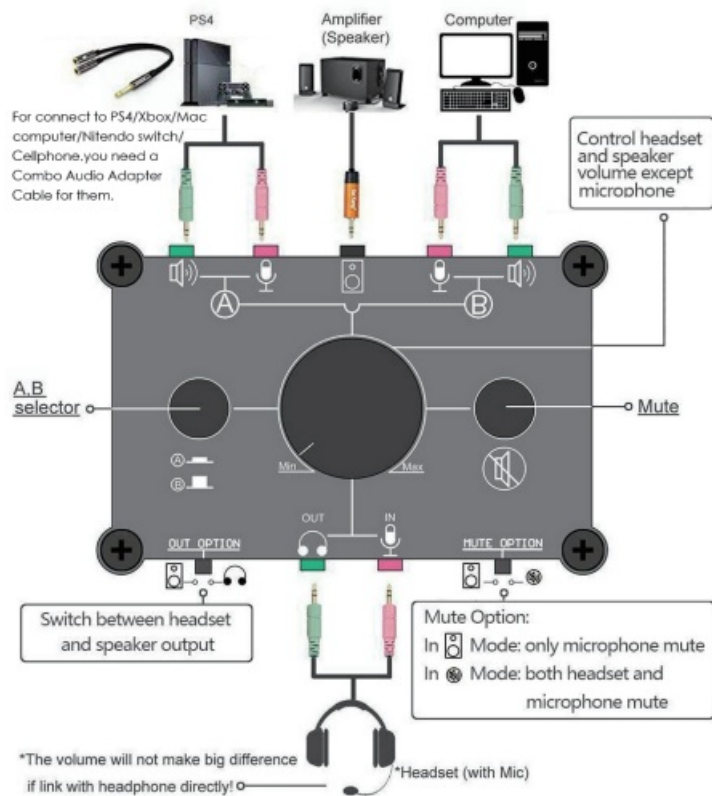
Usage diagram(MCI 024-BOX)



Usage diagram(MCI 024)



Usage diagram(MCI 023)



Parameters

Brand: Douk Audio

Model: MCI 023 / MCI 024 / MCI 024-BOX

Audio input/output: 3.5mm AUX

Mute function: support

Selection switch: support

Volume control: support

MC1024-BOX: Dimensions(W*D*H): 70*50*25mm / 2.76*1.97*0.98in

Package dimensions(W*D*H): 130*90*50mm / 5.12*3.54*1.97in

Net weight: 86g / 0.191b

MC1024 / MC1023:

Dimensions (W*D*H): 84*55*25 mm/ 3.31*2.17*0.98 in

Net Weight: 75g / 0.171b

Contact information

Website: www.doukaudio.com

Email: nobsound@doukaudio.com

(ID WeChat/WhatsApp: +86- 17704028602

Address: Room 1329, Wang Cheng Building, Long Guan East Road, Long Hua District, Shen Zhen, Guang Dong, China, 518000

Email: nobsound@doukaudio.com

WeChat/WhatsApp: +86- 17704028602

Address: Room 1329, Wang Cheng Building, Long Guan East Road, Long Hua District, Shen Zhen, Guang Dong, China, 518000



Documents / Resources



[Nobsound MC1024 Way Microphone Headset Speaker Audio Switch](#) [pdf] Instruction Manual
MC1024 Way Microphone Headset Speaker Audio Switch, MC1024, Way Microphone Headset Speaker Audio Switch, Microphone Headset Speaker Audio Switch, Headset Speaker Audio Switch, Speaker Audio Switch, Audio Switch, Switch

References

- [User Manual](#)