




NIVIAN v20230920 Wifi Camera User Manual

[Home](#) » [NIVIAN](#) » NIVIAN v20230920 Wifi Camera User Manual 

NIVIAN v20230920 Wifi Camera



Contents

- [1 ADD YOUR CAMERA TO THE MOBILE APP](#)
- [2 INFORMATION ABOUT RISKS](#)
- [3 DECLARATION OF CONFORMITY](#)
- [4 LIMITED WARRANTY](#)
- [5 USER RESPONSIBILITY](#)
- [6 Documents / Resources](#)
 - [6.1 References](#)
- [7 Related Posts](#)

ADD YOUR CAMERA TO THE MOBILE APP




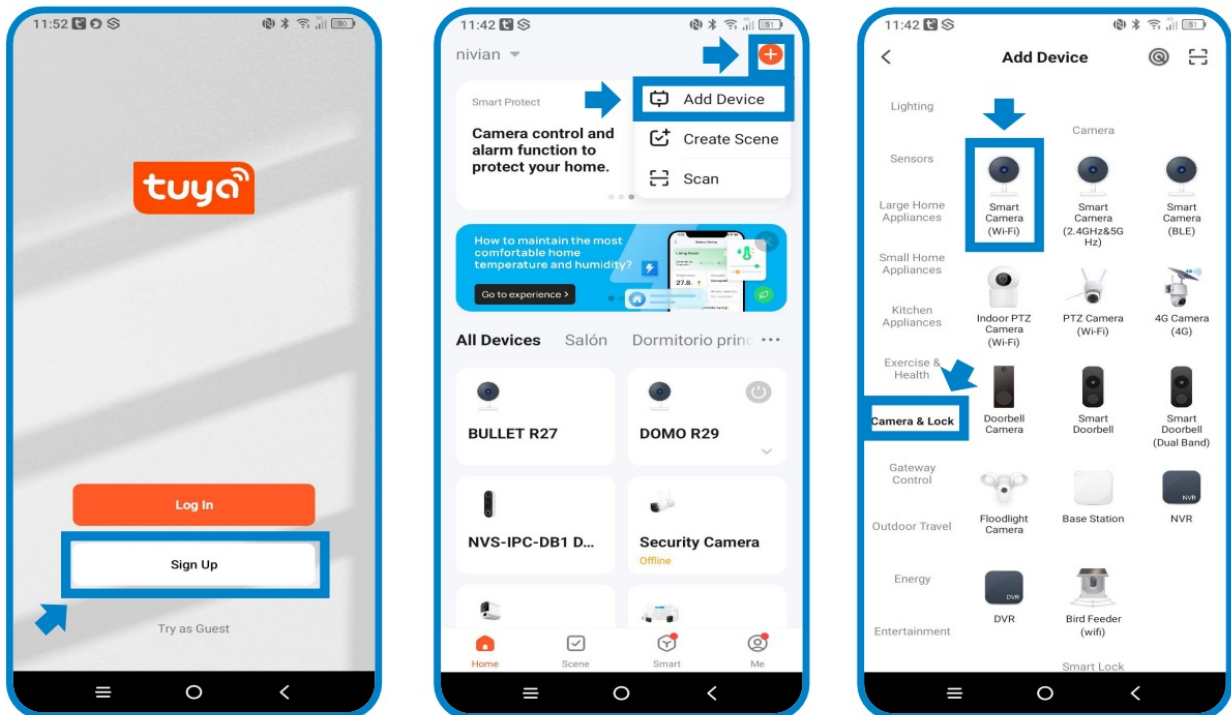
PRO TIP!

Before installing the camera in its final location, first, perform this settings near your Wi-Fi router and connect your mobile to the Wi-Fi network of 2.4GHz to which you are going to connect the camera.

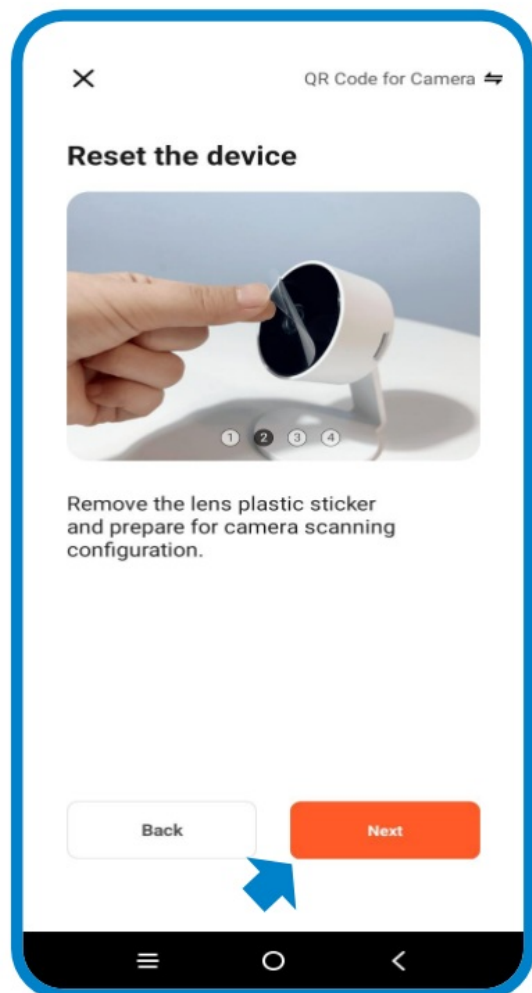
1. Download one of the two compatible apps, TUYA SMART or SMART LIFE, in your app store or scan its corresponding QR code:

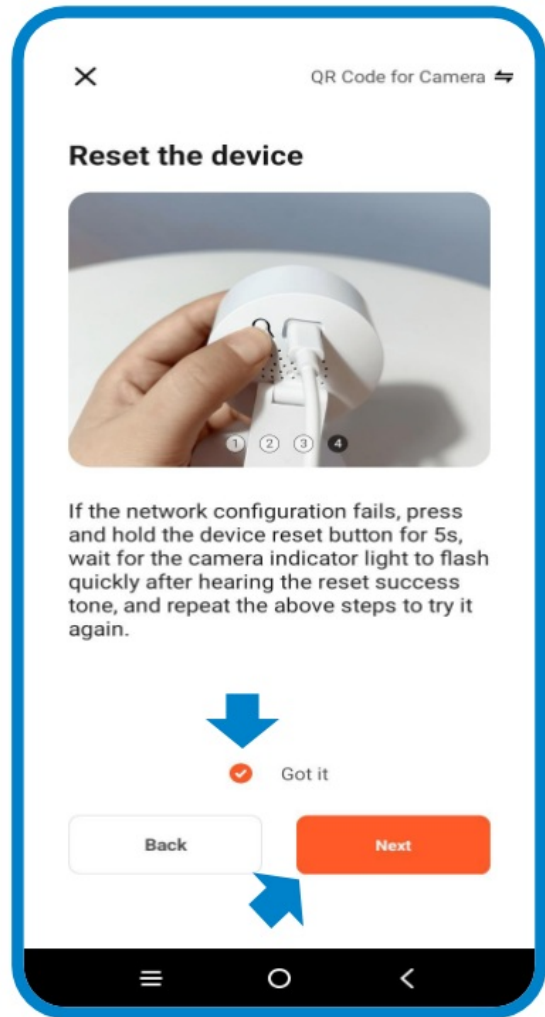
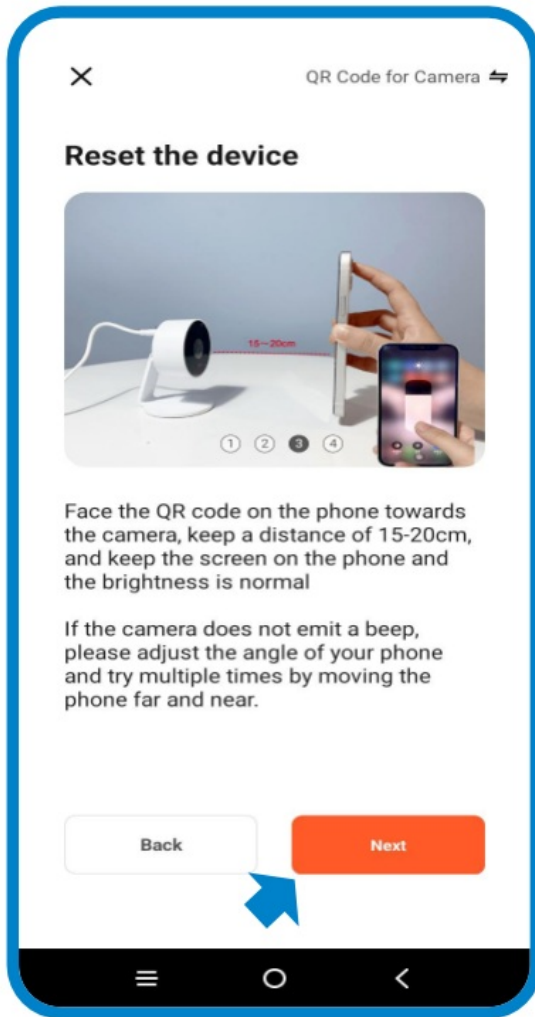


2. Sign up to create a new account or log in if you already have one.
3. Click on the icon  and select “Add device”.
4. In the left column, select “Camera & Lock,” then click continued “Smart Security Camera (Wi-Fi)”
5. Connect the camera to its power supply and wait a few seconds until you see The camera LED flashes and beeps repeatedly. You may need to press the camera’s Reset button for more than 5 seconds for it to reboot and activate its “Connection Mode” again.



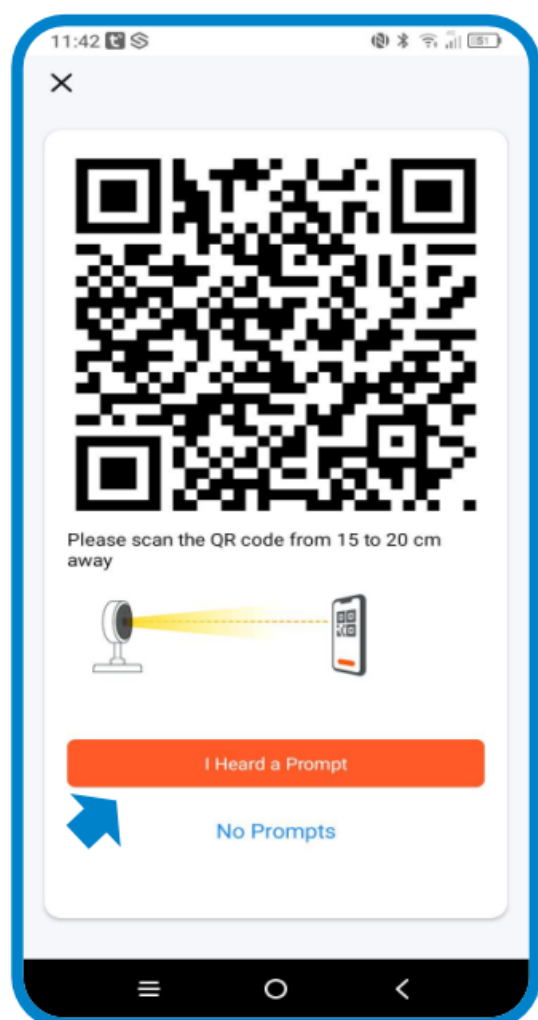
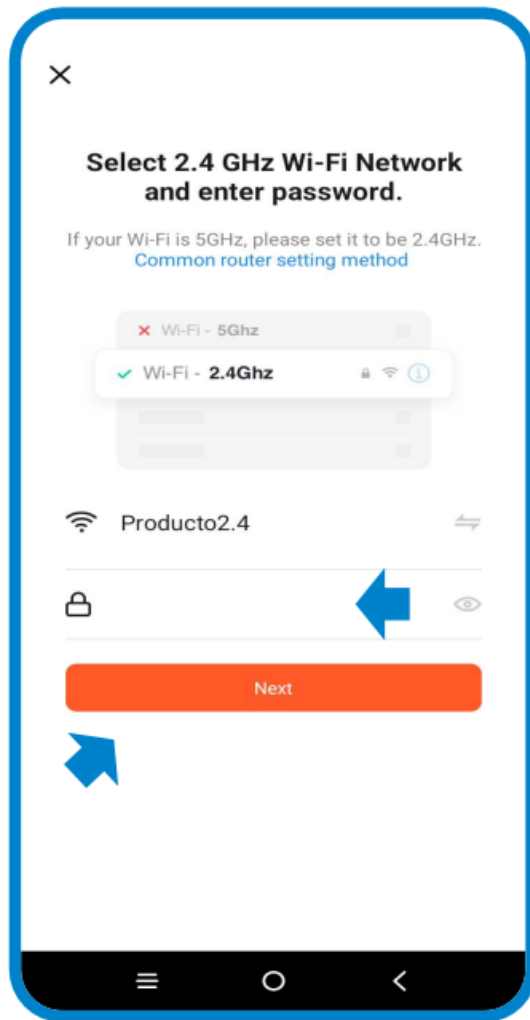
6. Follow the application instructions step by step.
 - The mobile must be connected to a 2.4Ghz Wi-Fi network.
 - Remove the lens protector.
 - Press the camera reset button.

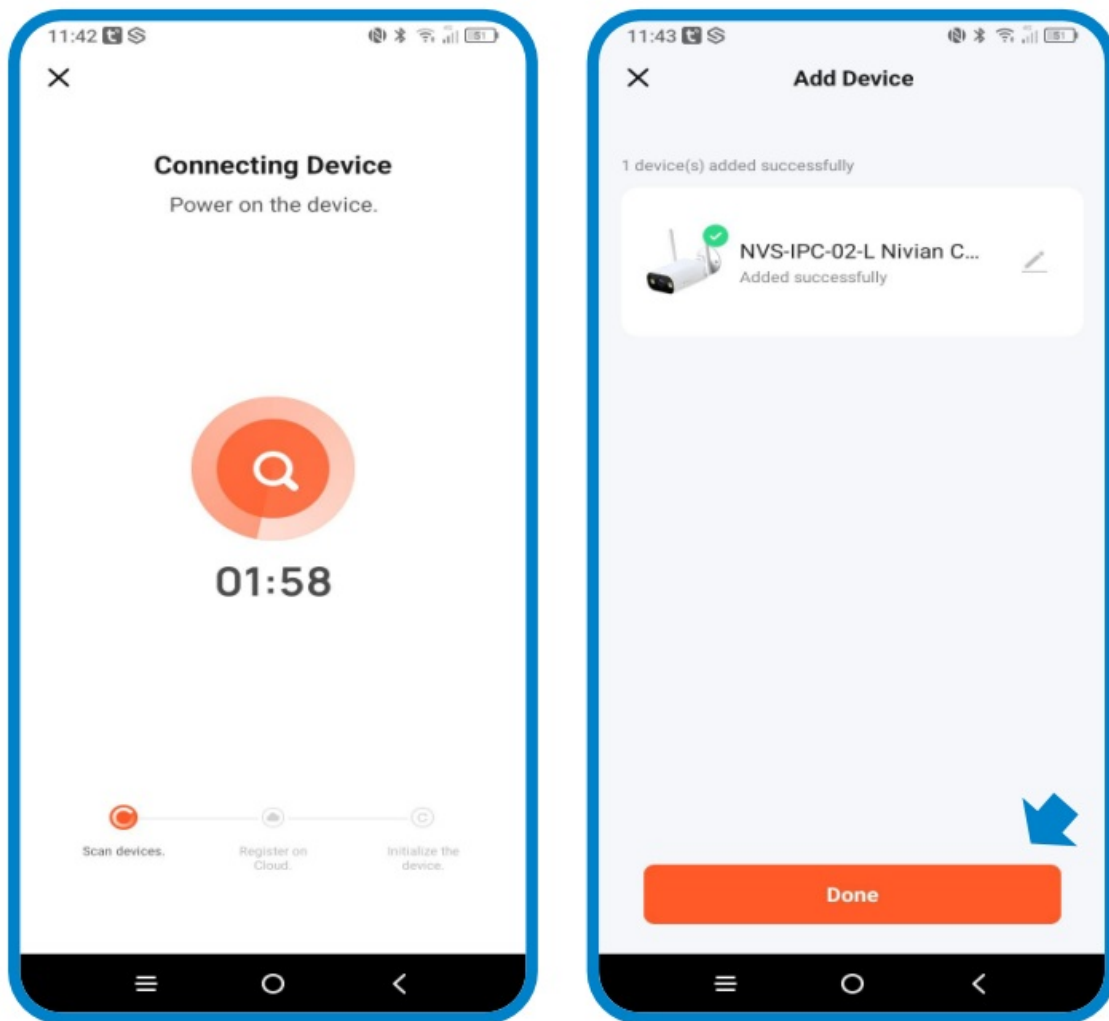




7. Follow the application instructions step by step.

- Enter the password for your Wi-Fi network.
- Place the civilian with the QR code that has been generated in front of the camera so that the camera can read it and connect to the Wi-Fi network.
- Once you have heard the double tone, press the "I heard the warning" button.
- A two-minute countdown will begin on the screen, the time in which the app will search for the camera and add it to the app





INFORMATION ABOUT RISKS



Keep the product away from heat sources and products flammable. Do not cover the product while it works. Do not apply aggressive or corrosive products on the product.



Avoid contact with water, liquids or higher humidity levels at 85%. If it gets wet, turn it off immediately and do not manipulate



Check that your electrical installation complies with current regulations. Poor installation can cause failures and even fires. Do not use power supplies or cables in poor condition.



Do not manipulate, apply pressure, or disassemble the equipment. This cancels the warranty and there is a risk of electric shock. If the equipment does not work correctly, smoke, suspicious odor or noise appears, unplug the power supply and contact customer service.



This product, its accessories and respective packaging, are not a toy. Keep them away from children, people or animals to those that may pose a risk.

DECLARATION OF CONFORMITY



Product manufactured in P.R.C.



This product and the accessories supplied, COMPLY WITH THE Applicable harmonized EUROPEAN STANDARDS listed in Directives: 2014/53/EU on radio equipment, 2014/30/EU on CE, 2011/65/EU RoHS, 2012/19/EU WEEE and 2006/66/EC batteries (where applicable), as well as the rest of the directives indicated in the DECLARATION OF CONFORMITY of the product.



All company, brand and product names are trademarks. registered trademarks of their respective companies.
©2018 Long Xian Import Export S.L. All rights reserved.



Products marked with this WEEE symbol cannot be disposed of as unsorted municipal waste in the European Union. For PROPER RECYCLING, discard the product and any batteries at designated collection points.

LIMITED WARRANTY

For a period of 36 months, starting from the date of the first purchase of the product, Long Xian Import Export S.L., as responsible for the Nivian brand, will respond to any lack of conformity that exists at the time of the delivery of the product, under the terms and conditions established in the legislation local, state and/or community.

THIS WARRANTY IS BASED ON SPECIFIC LEGAL REGULATIONS, WHICH MAY THERE ARE ADDITIONAL RIGHTS ACCORDING TO THE COUNTRY OR REGION, APPLICABLE EXCLUSIVELY IN THAT PLACE, WITHOUT BEING EXTENSIVE TO OTHERS.

Also, you can exercise this guarantee by going to the place where you purchased the product, according to the conditions set by the sales center.

In the event that the good does not comply with the contract, and after delivery of the receipt purchase or invoice, you can resort to the right to repair the good or its replacement, in accordance with the specific consumer regulations of the region.

This warranty will not be applicable if the defect has been caused by the buyer and/or by any third party, due to misuse, negligence or application of the good for a use other than that for which it was designed. The warranty right will be recognized when exercised within the warranty period and proof is provided shopping. This warranty does not cover shipping costs, insurance, or any other costs. secondary.

The warranty is valid for the European Union. For other countries consult the legislation current or your local distributor.

USER RESPONSIBILITY

Proper configuration of all passwords and other security settings Both the device and the network itself are important. Please keep in mind Please note that, in this case, we cannot be held responsible for possible damages.

This security system is offered as a complement that provides reliability limited in event detection. In no case does it represent a guarantee of protection, which will not be claimed for this purpose.

To the extent permitted by law, our company is not responsible for damages or losses linked to the use of the product or its accessory elements.

We simply guarantee its functionalities. Likewise, it is outside our responsibility for any type of illegitimate or inappropriate use.

Product specifications, as well as the contents of the manual and accessories, They are subject to change without prior notice.



Documents / Resources

A product image of the NIVIAN v20230920 Wifi Camera. The camera is white and spherical, mounted on a stand. The background shows a modern interior with a white chair and a table. The NIVIAN logo is visible in the top left corner of the image.	<p>NIVIAN v20230920 Wifi Camera [pdf] User Manual v20230920 Wifi Camera, v20230920, Wifi Camera, Camera</p>
--	---

References

- [User Manual](#)

[Manuals+](#), [Privacy Policy](#)

This website is an independent publication and is neither affiliated with nor endorsed by any of the trademark owners. The "Bluetooth®" word mark and logos are registered trademarks owned by Bluetooth SIG, Inc. The "Wi-Fi®" word mark and logos are registered trademarks owned by the Wi-Fi Alliance. Any use of these marks on this website does not imply any affiliation with or endorsement.