



NIUBEST Small Floating Shelf Installation Guide

[Home](#) » [NIUBEST](#) » NIUBEST Small Floating Shelf Installation Guide 

Contents

- [1 NIUBEST Small Floating Shelf](#)
- [2 Product Installation](#)
- [3 Installation Steps](#)
- [4 Specifications](#)
- [5 FAQs](#)
- [6 Installation](#)
- [7 Documents / Resources](#)
 - [7.1 References](#)
- [8 Related Posts](#)

NIUBEST

NIUBEST Small Floating Shelf



Product Installation

- **Materials Needed**

- Wood Board
- Screw
- Wall Plug

Installation Steps

- **Step 1: Marking the Wall**

- Mark two points on the wall with a level ruler to fix the distance.

- **Description of Diagram**

- The diagram illustrates a wall with two marks aligned horizontally, with a level ruler placed below them to ensure they are at the same height.

- **Step 2: Preparing the Wall**

- Drill holes at the marked points of the wall and hammer the wall plugs in.

- **Description of Diagram**

- The diagram shows three sequential images.
- The first image depicts a drill making a hole at one of the marked points.
- The second image shows a hammer being used to insert a wall plug into the drilled hole.
- The third image shows the drill again, this time implying the process is repeated for the second mark, with a notice specifying a wall thickness of 6-7mm for the drill bit.

- **Step 3: Mounting the Shelf**

- Align the board hole with the wall hole and twist into the screws to fix shelves.

- **Description of Diagram**

- The diagram illustrates three steps to mount the shelf. The first image shows aligning the shelf's hole with the wall hole. The second image depicts the shelf at an angle as it is partially mounted. The final image shows the shelf fully mounted against the wall with screws in place.

Specifications

Component	Description	Quantity
Wood Board	Shelf to be mounted on the wall	1
Screw	Hardware to fix the shelf to the wall	2
Wall Plug	Plastic insert for securing screws in the wall	2

FAQS

- **What tools are needed for installation?**

- A level ruler, drill, and hammer are required for the installation process.

- **How do I ensure the shelf will be level?**

- Use a level ruler to mark the points on the wall to ensure they are at the same height.

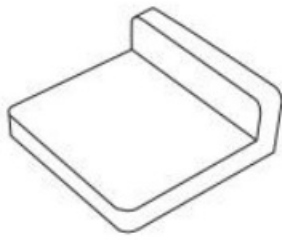
- **What size drill bit should be used?**

- The diagram suggests using a drill bit that accommodates a wall thickness of 6-7mm.

- **Can I install the shelf without wall plugs?**

- Wall plugs are recommended for secure installation, especially in drywall or masonry.

Installation



Wood Board



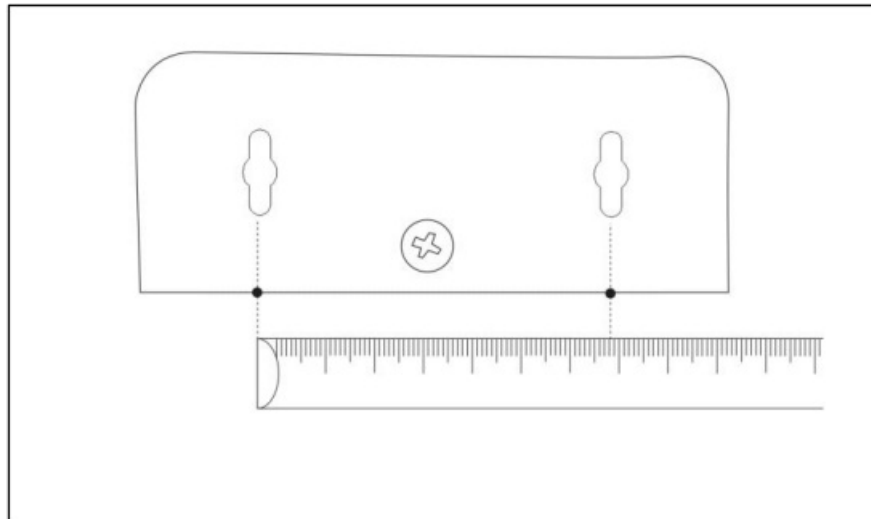
Screw



Wall Plug

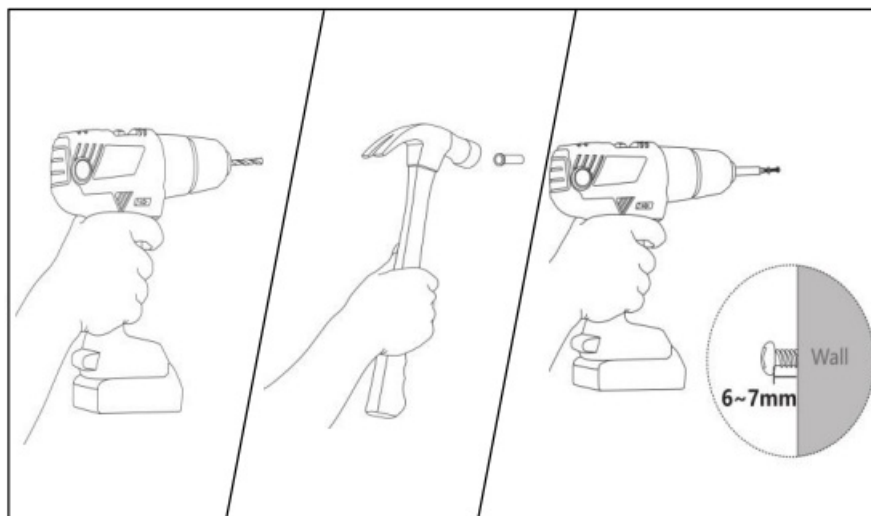
- **Step 1:**

- Mark two points on the wall with a level ruler to fix the distance.



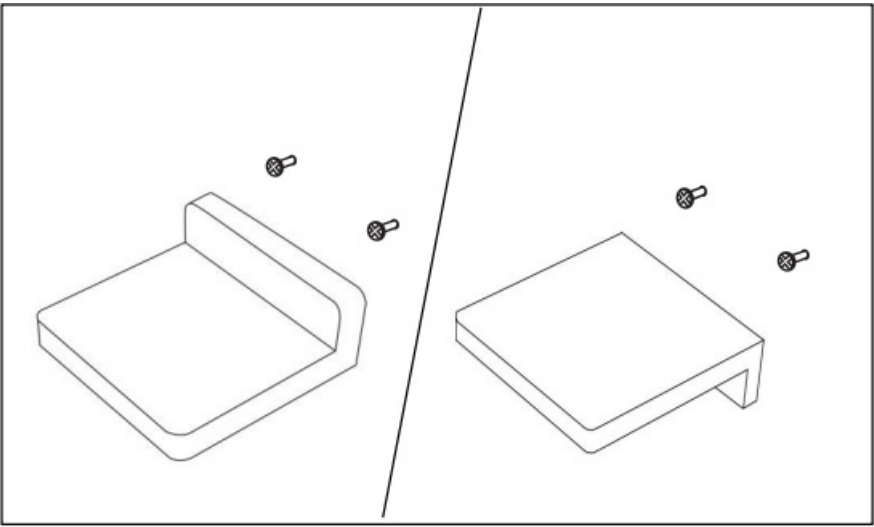
- **Step 2:**

- Drill holes at the marked points of the wall and hammer the wall plugs in.



- **Step 3:**

- Align the board hole with the wall hole and twist into the screws to fix shelves.



Documents / Resources

<div><div><div>Installation</div><div></div></div><div><div>Step 1</div><div>Mark two points on the wall with a level tape to fix the distance.</div></div><div><div>Step 2</div><div>Drill holes at the marked points of the wall and hammer the wall plugs in.</div></div><div><div>Step 3</div><div>Align the board hole with the wall hole and push into the screws to fix the board.</div></div></div>	<div><div>NIUBEST Small Floating Shelf [pdf] Installation Guide</div><div>Small Floating Shelf, Floating Shelf, Shelf</div></div>
--	---

References

- [User Manual](#)