

Contents [[hide](#)]

- [1 Nintendo BEE-021 Game Controller](#)
- [2 Specifications](#)
- [3 Product Usage Instructions](#)
- [4 FAQs](#)
- [5 Documents / Resources](#)
 - [5.1 References](#)



Nintendo BEE-021 Game Controller



Specifications

- Product Name SWITCH wireless Controller
- Battery 3.7V 950 mAh Li battery
- Charge Voltage DC5V
- Charge Current ≈500mA
- Charge Time ≈2.5 hours

- Product Model SZ-932B
- axis sens Six-axis gyro sensor
- Working voltage & current 3V & $\approx 25\text{-}100\text{mA}$
- Static working current $< 5\mu\text{A}$
- Working distance 6m

Product Usage Instructions

- To ensure proper operation and compliance with FCC/ISED guidelines, follow these steps:

Interference Prevention Measures:

1. Reorient or relocate the receiving antenna.
2. Increase the separation between the equipment and receiver.
3. Connect the equipment into an outlet on a circuit different from that to which the receiver is connected.
4. Consult the dealer or an experienced radio/TV technician, or visit Nintendo Consumer Service at support.nintendo.com for further assistance.

Note: Any changes or modifications not approved by the manufacturer may void the user's authority to operate this device.

Contact Information: Nintendo of America Inc., 4600 150th Ave NE, Redmond, WA 98052 [425-882-2040](tel:425-882-2040)

User Manual

Dear User:

Thank you very much for choosing this Switch game Controller. Please read this Manual in detail before to operate and using it correctly, and bring the superior performance of the product into full play. The descriptions in this Manual are based on the default settings of the device; all the pictures, statements and text information are for reference only. Please refer to the actual product. The content is subject to update without further notice. The update will be included in the new version of the Manual, and the Company

reserves the right of final interpretation. Available functions and additional services may vary by device, software or service provider. Please charge the Controller before use. If there are typographical errors or translation errors, we sincerely hope for all users' understanding!

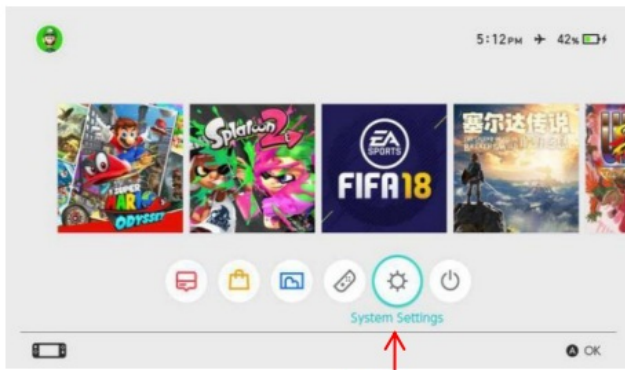
Controller Photo



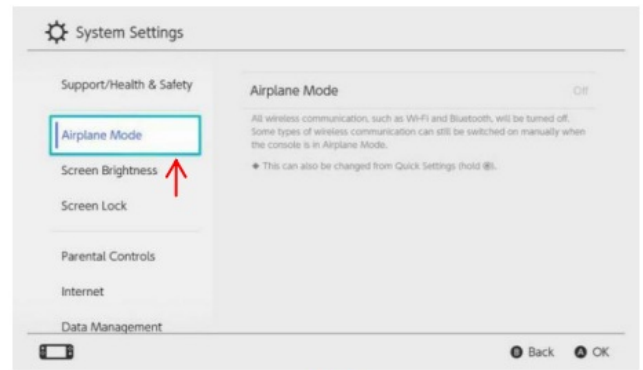
Mode and Connection operation instruction

Bluetooth Switch mode

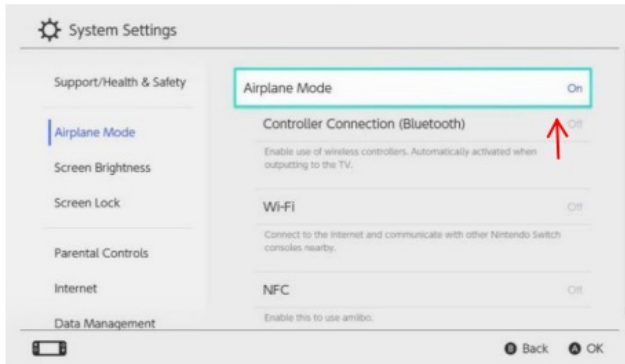
1. Turn the Switch console on, click the System Setting Menu button on the home screen, after enter to the next level of the Menu option and click the Airplane Mode option, then click the Controller to the next level of the Menu option and click the Airplane Mode option, then click the Controller to the next level of the Menu option and click the Airplane Mode option, then click the Controller option off.



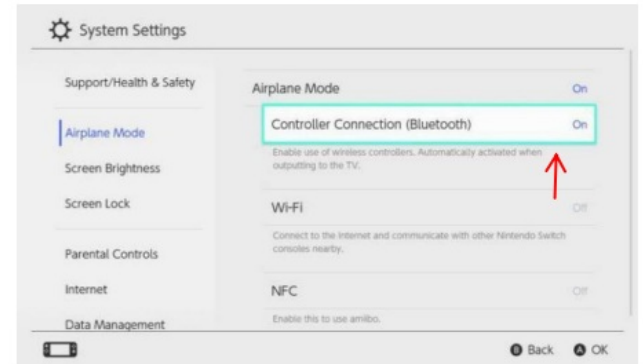
(1)



(2)

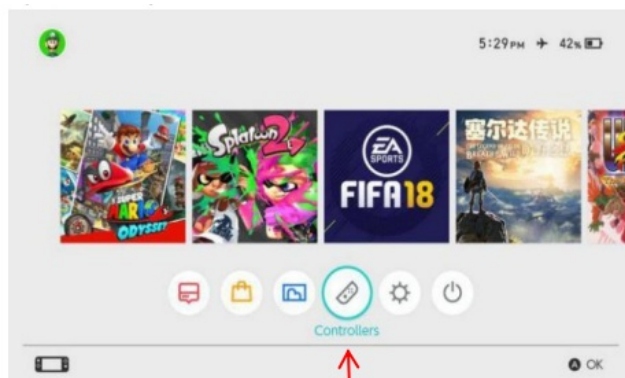


(3)

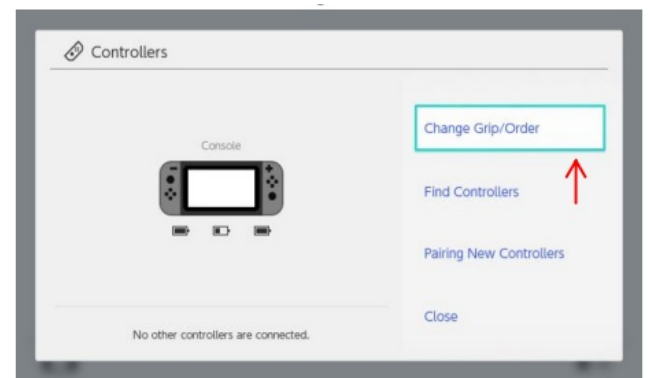


(4)

2. Enter the Switch console Bluetooth Pairing with Controller mode click the Controllers Menu button on the Console home screen, after entering the next level of Menu options, click the Change Grip/Order option, and the Console will automatically search for the matching Controller.



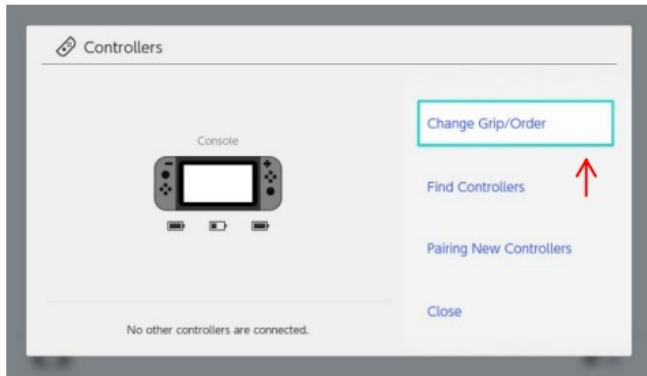
(5)



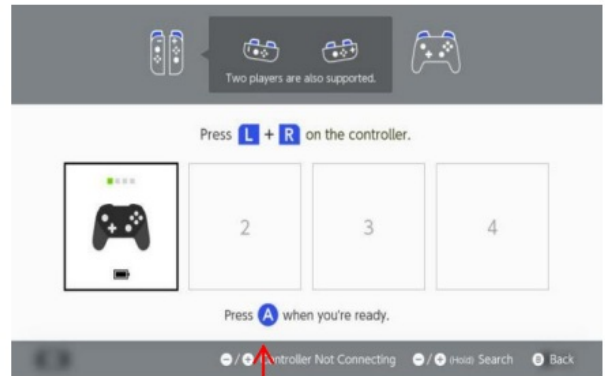
(6)

3. In the shutdown state, press the Y+HOME button of Controller or long press the HOME button 3S to enter Bluetooth pairing mode, LED1-LED4 light flashing quickly, after the successful connection, the Switch Console will automatic distribution Controller channel and the corresponding channel indicator light will always be on; Synchronous state or pairing with the Console: LED1-LED4 light flashing quickly.
4. In the shutdown state, directly insert the USB data cable into the USB port of the Switch console, if the console and the original charging base are integrated, insert the USB into charging base (Remark: need to open the wired controller connection option in the Console Setting), pair the console through the USB cable connection, and the

Controller will automatically connect back to the console through Bluetooth wireless mode after unplug the USB cable.



(7)



(8)

Bluetooth Android Mode

In the shutdown state, press and hold the Controller +HOME button to enter Bluetooth pairing mode, LED2+LED3 flashing quickly then open the Android device Bluetooth for search, find and click the “Gamepad” device name in the list of available devices to pair the LED2+LED3 are light on after pairing is successful.

Remark: In Android mode, the Controller has no vibration, axis functions.

Bluetooth IOS Mode

In the shutdown state, press the X+HOME button to enter pairing mode, LED1+LED4 flashing, then open IOS device Bluetooth for search, find and click the “Xbox Wireless Controller” device name in the list of available devices to pair. After the pairing succeeds, the corresponding LED1+LED4 is steady on.

Remark: The IOS device system needs to be 13.0 or above, the Controller has no vibration, axis functions in this mode.

Bluetooth PC (X-INPUT) Mode

In the shutdown state, press the X+HOME button to enter pairing mode, LED1+LED4 flashing, then open the PC Bluetooth for search, find and click the “Xbox Wireless Controller” device name in the list of available devices to pair. After the pairing succeeds, the corresponding LED1+LED4 is steady on, the Controller enter X-INPUT mode, which can be used directly in Windows 10 systems and above.

USB Mode

In the Controller power-off state, insert it into the PC USB port through the data cable, it is automatically recognised as X-INPUT mode (default mode) and LED1+LED4 are light on. In PC X-INPUT mode, long-press the “-”+”+” button 3S to switch to D-INPUT controller mode, and LED2+LED3 is light on.

MACRO Function

Macro programming function setting mode 1

Programmable k Cross arrow key (Up, Down, Left, Right) A B X Y ZL ZR L R L3 R3.

M1 power-on default as A key function, M2 power-on default as B key function.

1. Press together the M1/M2 +“+” key to enter the MACRO function setting, the motor vibrates prompand and t, and the current channel mode indicator blinks slowly.
2. Press the action keys that need to be programmed in sequence; the channel light will blink quickly after the key input, indicating that the key has been recorded.
3. Press the program key when you are finished editing, and the channel indicator will be on. (Each set of Macro programming can be programmed with 21 action keys. When the action keys exceed 21, the channel light will no longer flash quickly to prompt key input. his programming mode can record the sequence of key input, as well as the time.

Macro programming function setting mode 2:

Programmable key A B X Y ZL ZR L R L3 R3.

1. Press together the M1/M2 +“-” key to enter the MACRO function, setting the current channel mode indicator link slowly.
2. Press the action keys that need to be programmed in sequence such as the Cross key A B X Y ZL ZR L R L3, R3. The channel light will blink quickly after the key input, indicating that the key has been recorded.
3. Press the program key when you are finished editing, and the channel indicator will be on. This programming mode can realise the function of the M1/M2 key to achieve multiple keys being pressed at the same time..

4. Action press down: If the Macro key has been programmed with a set of action keys, click the Macro programming key to ensure that the action key can be pressed at the same time.

Macro programming function Cleared

1. Press any of the M1/M2 programming keys at the same time, and then press and hold the + key (or – key), then the channel light slowly flashes into the programming state.
2. Press the programming key again to clear the programming of the Macro key and restore the default Settings. The clear is complete, the channel indicator is on.

Remark: Macro key programming function with memory function after shutdown.

TURBO speed adjustment

Hold down the TURBO key and press the corresponding key to set TURBO. You can set the key: A, B, X, Y, L, ZL, R, ZR; To cancel the Settings, repeat the Settings There are three gear TURBO speed adjustment (5-10-15HZ); TURBO + right 3D rocker push up: increase the speed of continuous firing by 1 gear; TURBO+ right 3D joystick push down: Reduce the speed of continuous firing by 1 gear, default middle gear.

Motor vibration intensity adjustment

Press and hold TURBO+ left 3D rocker push up: increase motor vibration and strengthen; TURBO+ Left 3D rocker push down: decreases the motor vibration 100% - 75% – 50%- 0% 4 gear intensity adjustable, Controller default 100% vibration intensity.

RGB Light effect Setting

- Press and hold the LIGHT+R3 key together (right rocker push down) to switch the light effect mode. Each press can switch the light effect mode (Dazzling – Monochrome – Breathing).
- In Dazzling mode, press and hold the LIGHT+L3 key together (left rocker push down) to pause and save the current Dazzling light effect mode.
- In Monochrome mode press and hold the LIGHT+L3 key (left rocker push down) to switch the light colour.
- In Breathing mode, press and hold the LIGHT+L3 key (left rocker push down) to

pause and save the current mode press again to turn on the Breathing mode again.

- In each mode, the brightness of the RGB light can be adjusted by pressing the LIGHT+(UP/DOWN arrow key) at the same time, and the brightness of one step can be adjusted by pressing the combination key once; The LIGHT+UP combination key increases the brightness, and the LIGHT+DOWN combination key decreases the brightness.
- Long-press the LIGHT key 5S to close or open the RGB light. Light effect Settings With memory function will automatically save the current setting of the light effect mode.

Wake up / Re-Connection Function

- Press the HOME button for 1 second to wake up the controller, connect back and wake up the hibernating Switch console. The controller will automatically sleep if the connection fails in 15 seconds.
- The controller has a mode memory function, which will keep the current mode after shutdown. Press the HOME button to wake up the controller, and you can directly connect to the last saved mode.

Charging Indication

- In the controller shutdown state, the LED1-LED4 mode indicator blinks slowly while charging, and the LED is off after being fully charged.
- Battery low voltage alarm The current mode indicator is blinking (quickly). The current mode indicator blinks (slowly) when charging, and the current mode indicator is steady on when fully charged.

Automatic sleep/Power-On/Off

The console screen closed, the Controller automatically sleeps; the controller automatically sleeps if without no key action (including sensor action) after 5 minutes. In Bluetooth mode, long-press the HOME key for 5 seconds to close the controller.

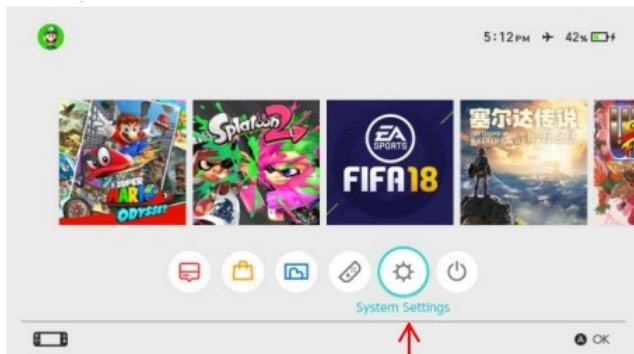
Lower voltage alarm

When the Controller battery is low, the current mode indicator blinks quickly, indicating that the battery is low. If you continue to use the Controller until the voltage is lower than

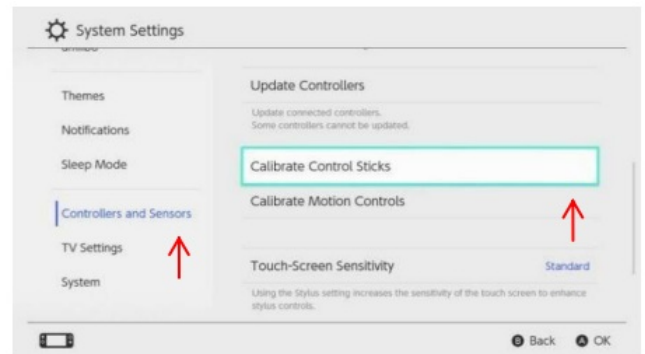
a certain value, the Controller will automatically enter the sleep state.

3D calibration

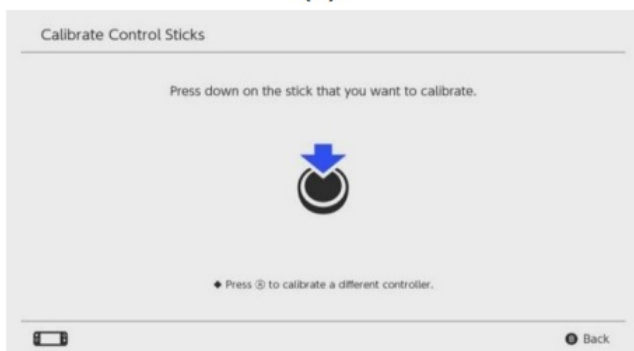
When there is a problem with the left and right 3D joysticks, you can calibrate the 3D joysticks through the console. Enter the calibration operation interface as shown in the following figure, and complete the corresponding actions according to the console instructions. When the console pops up to complete the calibration, the calibration is complete.



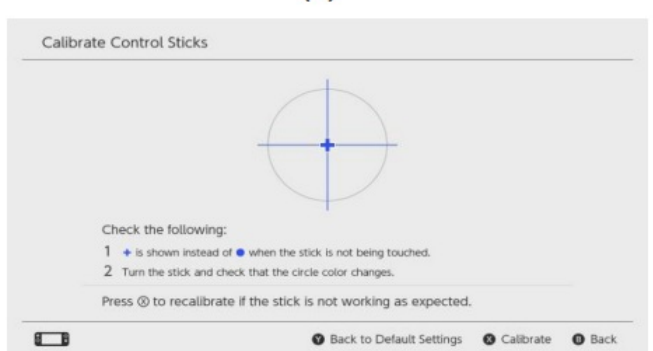
(1)



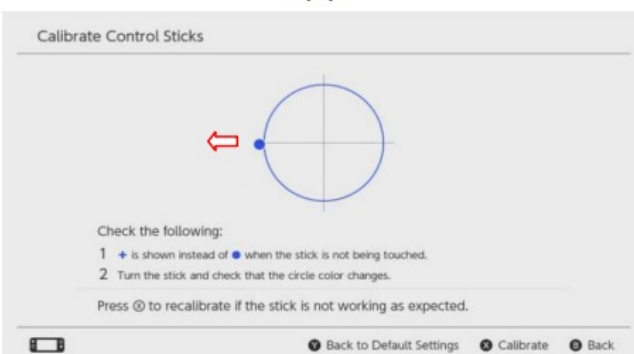
(2)



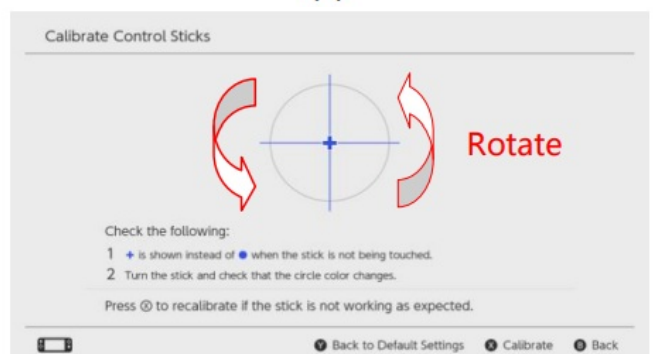
(3)



(4)



(5)

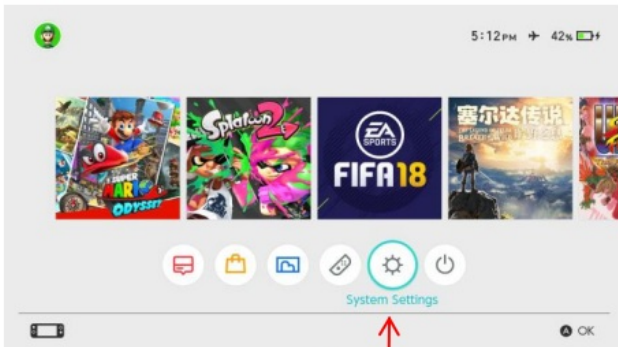


(6)

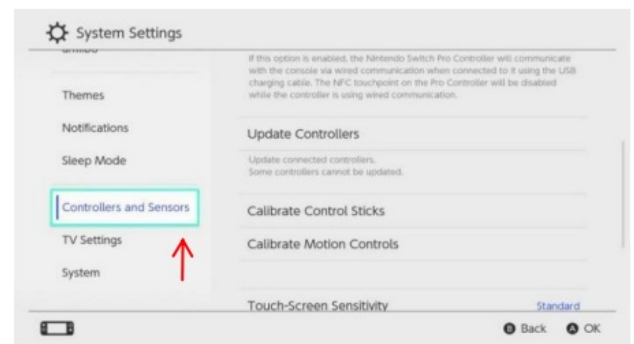
Six-axis Calibration

If the axis sensor on the Controller has abnormal problems, the axis sensor of the Controller can be restored to normal work through the axis calibration function . Axis calibration operations can be performed in any of the following ways.

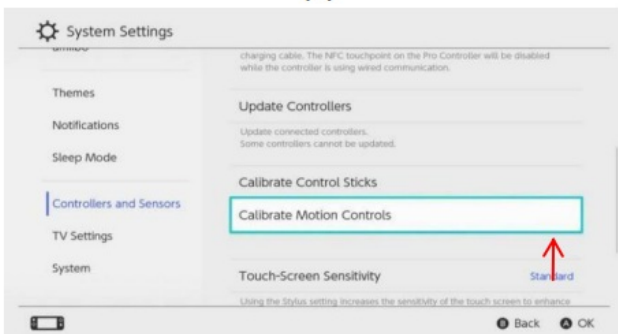
1. In the online state, enter the sensor calibration interface through the console. Keep the Controller flat on the plane and press “+” or “-”. When the console pops out calibration is completed, calibration is complete



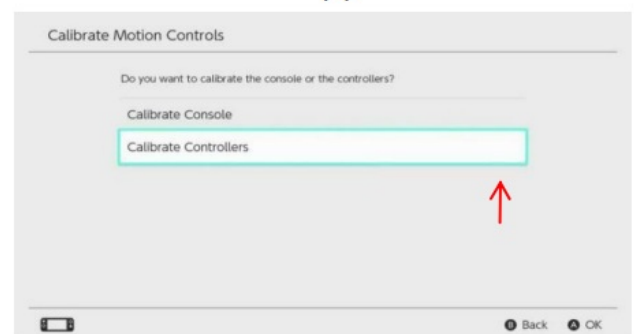
(1)



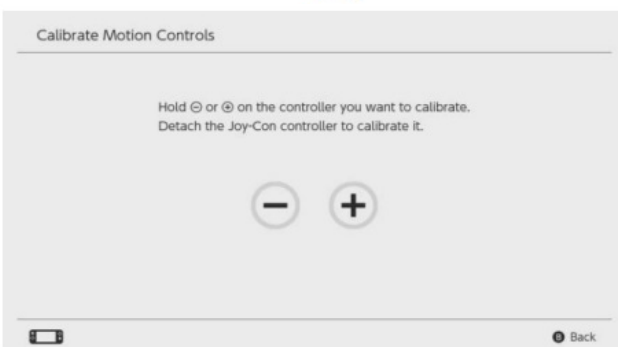
(2)



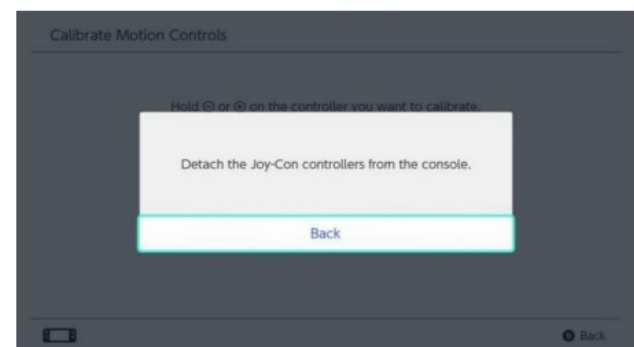
(3)



(4)



(5)

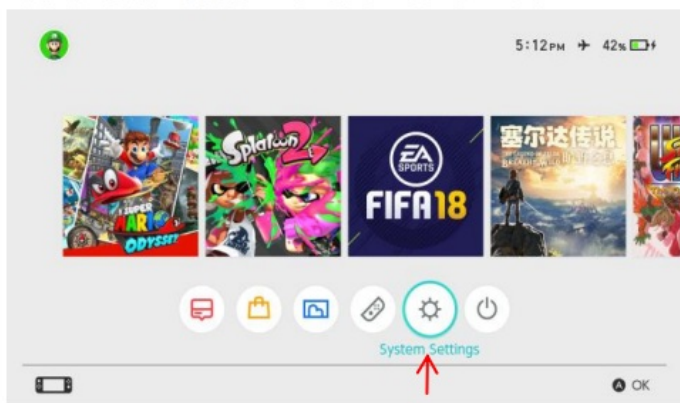


(6)

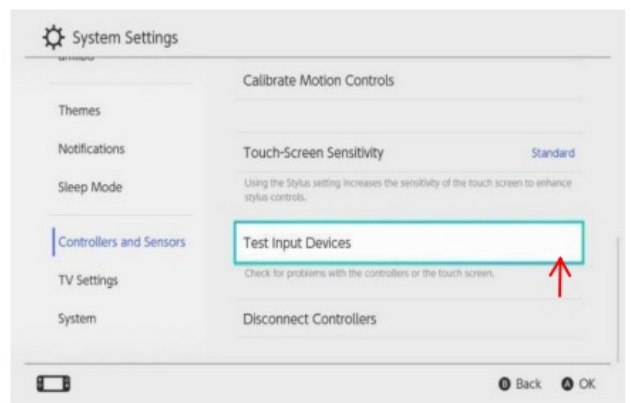
2. In shutdown state, press and hold the “A”+“-”+ HOME 3S to turn on the Controller. Two groups,s before and after the lights flashing, press the “+” button again LED lights extinguished. Calibration is complete.

Button Test

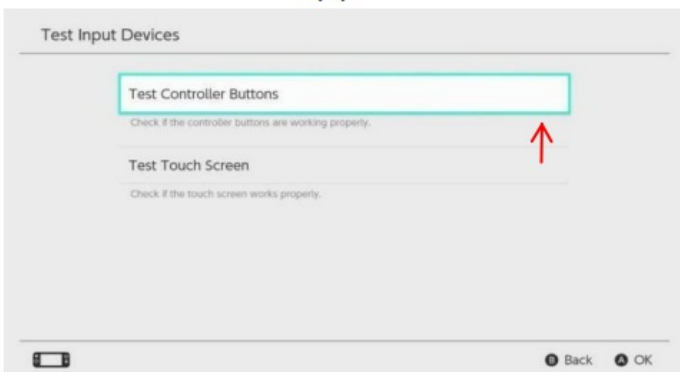
If the controller buttons fail or do not work, you can use the console button test option to test whether each button function is normal.



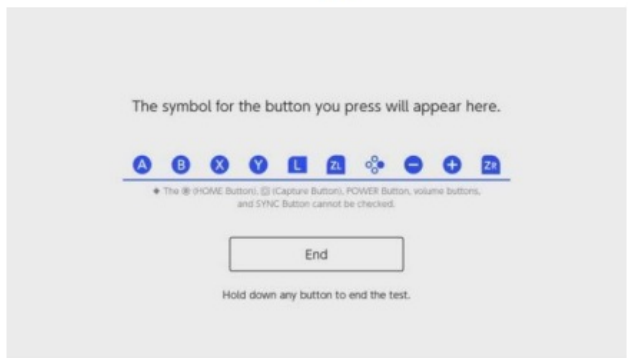
(1)



(2)



(3)



(4)

Reset Function

When the Controller function is abnormal or stops working, you can reset the Controller by pressing the Reset button at the bottom of the Controller.

FCC Statement

This equipment has been tested and found to comply with the limits for a Class B digital device, pursuant to part 15 of the FCC Rules. These limits are designed to provide reasonable protection against harmful interference in a residential installation. This equipment generates, uses and can radiate radio frequency energy and, if not installed and used per the instructions, may cause harmful interference to radio communications. However, there is no guarantee that interference will not occur in a particular installation. Suppose this equipment does cause harmful interference to radio or television reception, which can be determined by turning the equipment off and on. In that case, the user is encouraged to try to correct the interference by one or more of the following measures:

- Reorient or relocate the receiving antenna.
- Increase the separation between the equipment and receiver.
- Connect the equipment into an outlet on a circuit different from that to which the receiver is connected.

- Consult the dealer or an experienced radio/TV technician for help.

Caution: Any changes or modifications to this device not explicitly approved by the manufacturer could void your authority to operate this equipment.


This device complies with part 15 of the FCC Rules. Operation is subject to the following two conditions: (1) This device may not cause harmful interference, and (2) this device must accept any interference received, including interference that may cause undesired operation.

RF Exposure Information

The device has been evaluated to meet the general RF exposure requirements. The device can be used in portable exposure conditions without restriction.


FAQs


Documents / Resources

	Nintendo BEE-021 Game Controller [pdf] Owner's Manual BKEBEE021, bee021, BEE-021 Game Controller, BEE-021, Game Controller, Controller
---	---

References

- [User Manual](#)

 BEE-021, BEE-021 Game Controller, BEE021, BKEBEE021, controller, Game Controller,

 Nintendo Nintendo

Leave a comment

Your email address will not be published. Required fields are marked *

Comment *

Name

Email

Website

☐ Save my name, email, and website in this browser for the next time I comment.

Post Comment

Search:

e.g. whirlpool wrf535swhz

Search

Manuals+ | Upload | Deep Search | Privacy Policy | @manuals.plus | YouTube

This website is an independent publication and is neither affiliated with nor endorsed by any of the trademark owners. The "Bluetooth®" word mark and logos are registered trademarks owned by Bluetooth SIG, Inc. The "Wi-Fi®" word mark and logos are registered trademarks owned by the Wi-Fi Alliance. Any use of these marks on this website does not imply any affiliation with or endorsement.