

NINJA®

TB401EU Detect Power Blender plus Processor Pro



NINJA TB401EU Detect Power Blender plus Processor Pro Instruction Manual

[Home](#) » [Ninja](#) » NINJA TB401EU Detect Power Blender plus Processor Pro Instruction Manual 

Contents




- 1 NINJA TB401EU Detect Power Blender plus Processor Pro
- 2 IMPORTANT SAFETY INSTRUCTIONS
- 3 PARTS
- 4 BEFORE FIRST USE
- 5 BLENDSense TECHNOLOGY
- 6 USING THE CONTROL PANEL
- 7 PROCESSING MODE PROGRAMS
- 8 USING THE JUG
- 9 BLADE ASSEMBLIES
- 10 USING THE REVERSIBLE SLICING/SHREDDING DISC
- 11 USING THE SINGLE-SERVE CUP
- 12 CARE & MAINTENANCE
- 13 ORDERING REPLACEMENT PARTS
- 14 TROUBLESHOOTING GUIDE
- 15 GUARANTEE
- 16 TECHNICAL SPECIFICATIONS
- 17 FAQ
- 18 Documents / Resources
 - 18.1 References

NINJA®



IMPORTANT SAFETY INSTRUCTIONS

PLEASE READ ALL INSTRUCTIONS BEFORE USE • FOR HOUSEHOLD USE ONLY

	Read and review instructions for operation and use.
	Indicates the presence of a hazard that can cause personal injury, death, or substantial property damage if the warning included with this symbol is ignored.
	For indoor and household use only.
When using electrical appliances, basic safety precautions should always be followed, including the following:	

WARNING: To reduce the risk of injury, fire, electrical shock or property damage, basic safety precautions must always be followed, including the following numbered warnings and subsequent instructions. **DO NOT** use appliance for other than intended use

1. Read all instructions prior to using the appliance and its accessories.
2. This product is provided with Ninja Detect Total Crushing & Chopping Blades (Stacked Blade Assembly) and Chopping Blade Assembly. **ALWAYS** exercise care when handling blade assemblies. The blade assemblies are loose and sharp and are **NOT** locked in place in their containers. The blade assemblies are designed to be removable to facilitate cleaning and replacement if needed. **ONLY** grasp the blade assemblies by the top of the shaft. Failure to use care when handling the blade assemblies will result in a risk of laceration.
3. Handle the Hybrid Edge Blades Assembly with care, as the blades are sharp.
4. Before operation, ensure all utensils are removed from containers. Failure to remove utensils can cause containers to shatter and potentially result in personal injury and property damage.
5. **DO NOT** blend hot, effervescent, or carbonated liquids or ingredients. Doing so may cause excessive pressure buildup, resulting in risk of laceration and or the user being burned.

6. Remove the Hybrid Edge Blades Assembly from the Single-Serve Cup upon completion of blending. DO NOT store ingredients before or after blending them in the cup with the blade assembly attached. Some foods may contain active ingredients or release gases that will expand if left in a sealed container, resulting in excessive pressure buildup that can pose a risk of laceration, burns, or property damage.
7. Carefully observe and follow all warnings and instructions. This unit contains electrical connections and moving parts that potentially present risk to the user.
8. ALWAYS take your time and exercise care during unpacking and appliance setup. Blades are loose and sharp. ALWAYS exercise care when handling blade assemblies. This appliance contains sharp, loose blades that can cause laceration if mishandled.
9. Take inventory of all contents to ensure you have all parts needed to properly and safely operate your appliance.
10. Upon completion of processing, ensure the blade assembly is removed BEFORE emptying the container's contents. Remove the blade assembly by carefully grasping the top of the shaft and lifting it from the container. Failure to remove the blade assembly before emptying the container results in a risk of laceration.
11. If using the jug's pour spout, hold the cover in place on the container or ensure lid lock is engaged when pouring to avoid risk of laceration.
12. ONLY grasp the Hybrid Edge Blades Assembly by the outer perimeter of the blade assembly base. Failure to use care when handling the blade assembly will result in a risk of laceration.
13. Turn the appliance OFF, then unplug the appliance from the outlet when not in use, before assembling or disassembling parts, and before cleaning. To unplug, grasp the plug by the body and pull from the outlet. NEVER unplug by grasping and pulling the flexible cord.
14. Before each use, inspect blade assemblies for damage. If a blade is bent or damage is suspected, contact SharkNinja to arrange for replacement.
15. DO NOT use this appliance outdoors. It is designed for indoor household use only.
16. DO NOT modify the plug in any way.
17. DO NOT operate any appliance with a damaged cord or plug, or after the appliance malfunctions or is dropped or damaged in any manner. This appliance has no user-serviceable parts. If damaged, contact SharkNinja for servicing.
18. The entire supply cord is not suitable for replacement. If damaged, please contact SharkNinja for service.
19. Extension cords should NOT be used with this appliance.
20. To protect against the risk of electric shock, DO NOT submerge the appliance or allow the power cord to contact any form of liquid.
21. DO NOT allow the cord to hang over the edges of tables or counters. The cord may become snagged and pull the appliance off the work surface.
22. DO NOT allow the unit or the cord to contact hot surfaces, including stoves and other heating appliances.
23. ALWAYS use the appliance on a dry and level surface.
24. DO NOT allow children to operate this appliance or use as a toy. Close supervision is necessary when any appliance is used near children.
25. This appliance is NOT intended to be used by people with reduced physical, sensory, or mental capabilities, or lack of experience and knowledge, unless they have been given supervision or instruction concerning use of the appliance by a person responsible for their safety.
26. ONLY use attachments and accessories that are provided with the product or are recommended by SharkNinja. The use of attachments, including canning jars, not recommended or sold by SharkNinja may cause fire,

electric shock, or injury.

27. NEVER place a blade assembly or disc on the motor base without it first being attached to its corresponding container (jug, cup, or processor bowl) with the lid also in place.
28. Keep hands, hair, and clothing out of the container when loading and operating.
29. During operation and handling of the appliance, avoid contact with moving parts.
30. DO NOT fill containers past the MAX FILL or MAX LIQUID lines to avoid risk of injury due to damage to the lids or containers.
31. DO NOT operate the appliance with an empty container.
32. DO NOT microwave any containers or accessories provided with the appliance.
33. EVER leave the appliance unattended while in use.
34. DO NOT process dry ingredients with the Single-Serve Cup and Hybrid Edge Blades Assembly, the jug and Stacked Blade Assembly or the processor bowl and Chopping Blade Assembly.
35. DO NOT perform grinding operations with the Single-Serve Cup and Hybrid Edge Blades Assembly, the jug and Stacked Blade Assembly or the processor bowl and Chopping Blade Assembly.
36. NEVER operate the appliance without lids and caps in place. DO NOT attempt to defeat the interlock mechanism. Ensure the container and lid are properly installed before operation.
37. Keep hands and utensils away from moving blades or discs while processing food to reduce the risk of severe personal injury or damage to the blender. A scraper may be used ONLY when the blender is not running.
38. If you find unmixed ingredients sticking to the sides of the cup, stop the appliance, remove the blade assembly, and use a scraper to dislodge ingredients.
39. DO NOT open the jug's pour spout cap while blender is operating.
40. If you find unmixed ingredients sticking to the sides of the jug, stop the appliance, remove the lid, and use a spatula to dislodge ingredients. NEVER insert your hands into the jug, as you may contact one of the blades and experience a laceration.
41. DO NOT attempt to remove the container or lid from the motor base while the blade assembly is still spinning. Allow the appliance to come to a complete stop before removing lids and containers.
42. If the appliance overheats, a thermal switch will activate and temporarily disable the motor. To reset, unplug the appliance and allow it to cool for approximately 30 minutes before using again.
43. DO NOT expose the containers and accessories to extreme temperature changes. They may experience damage.
44. The maximum wattage rating for this appliance is based on the configuration of the Hybrid Edge Blades Assembly and Single-Serve Cup. Other configurations may draw less power or current.
45. DO NOT submerge the motor base or control panel in water or other liquids. DO NOT spray motor base or control panel with any liquid.
46. DO NOT attempt to sharpen blades.
47. Turn off the appliance and unplug the motor base before cleaning.
48. Unit is intended to create a dough ball. It is NOT intended to knead continuously. After dough ball forms, additional kneading should be done by hand on a work surface. If the unit moves excessively on the work surface, remove the dough ball and knead by hand.
49. NEVER feed food into processor bowl by hand. ALWAYS use the provided food pusher with the feed chute lid.

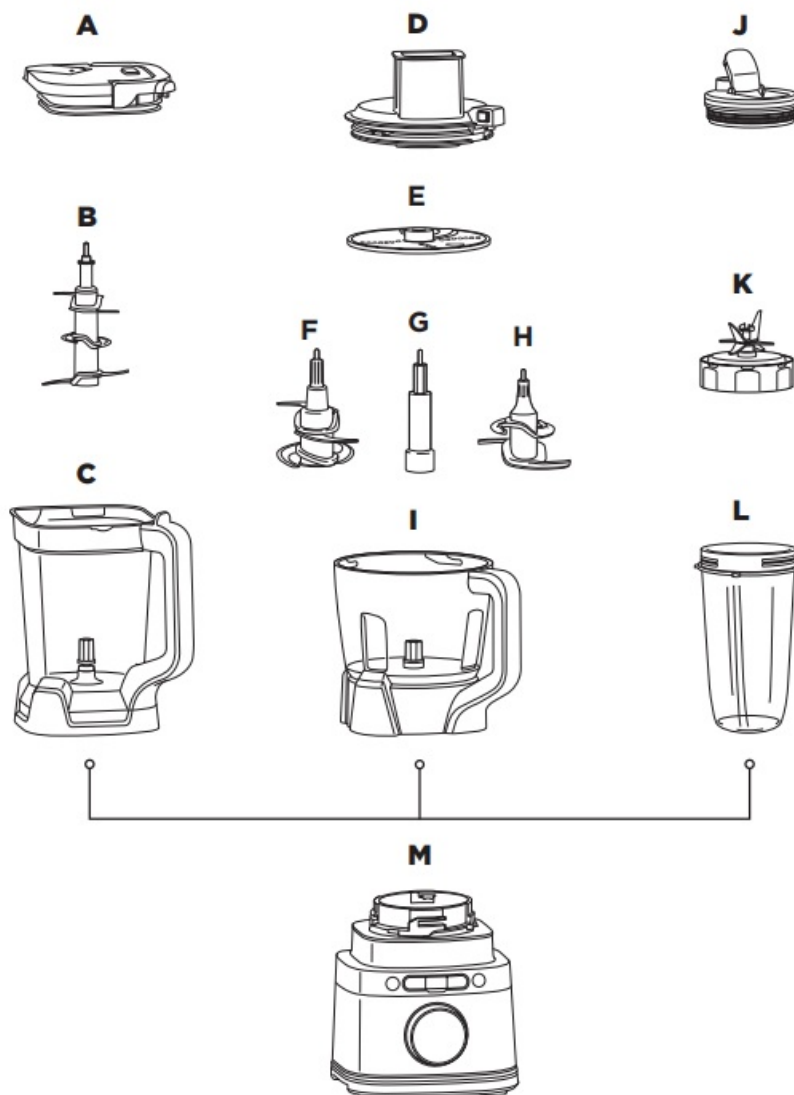
PARTS

- A Jug Lid With Pour Spout

- B Ninja Detect Total Crushing & Chopping Blades (Stacked Blade Assembly)
- C 2.1 L* Full-Size Jug
- D Power Food Processor Bowl Feed Chute Lid and Pusher
- E Reversible Slicing/Shredding Disc
- F Chopping Blade Assembly
- G Spindle
- H Dough Blade Assembly
- I 1.6 L Power Food Processor Bowl
- J Spout Lid
- K Hybrid Edge Blades Assembly
- L 600ml Single-Serve Cup
- M Motor Base

(attached power cord not shown)

*700ml max liquid capacity



To purchase more accessories and find great recipes, visit ninjakitchen.co.uk.

BEFORE FIRST USE


IMPORTANT: Review all warnings at the beginning of this Owner's Guide before proceeding

WARNING: The Stacked Blade Assembly and Chopping Blade Assembly are NOT locked in place in the jug. Handle the Stacked Blade Assembly and Chopping Blade Assembly by grasping the top of the shaft.

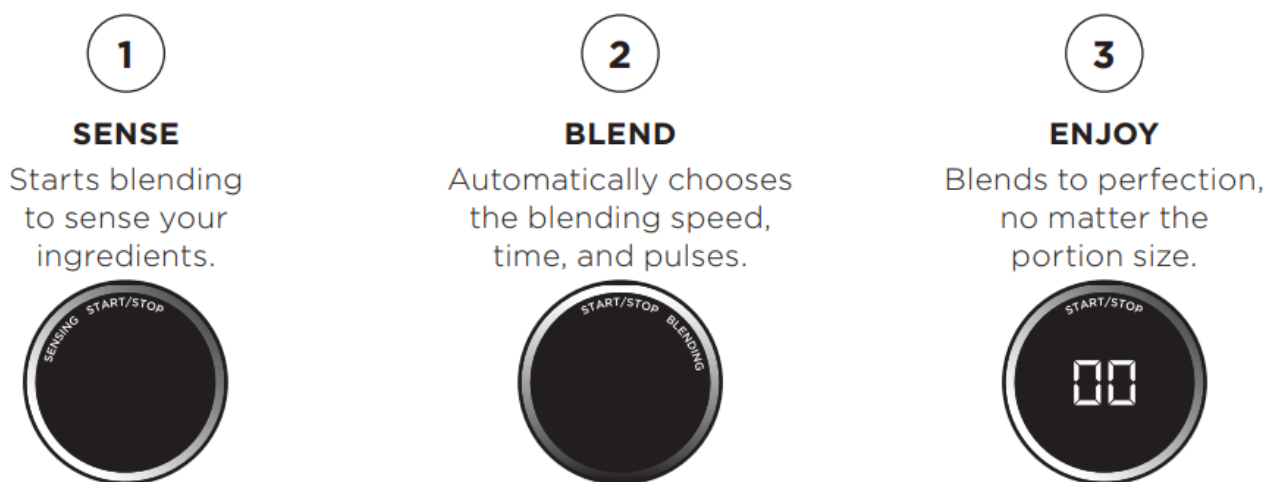
1. Remove all packaging materials from the unit. Exercise care when unpacking the Stacked Blade Assembly, Hybrid Edge Blades Assembly, and Chopping Blade Assembly, as the blades are loose and sharp.
2. Handle the Hybrid Edge Blades Assembly by grasping around the perimeter of the blade assembly base.
3. Wash containers, lids, and blade assemblies in warm, soapy, water using a dishwashing utensil with a handle to avoid direct contact with the blades. Exercise care when handling blade assemblies, as the blades are loose and sharp.
4. Thoroughly rinse and air-dry all parts.
5. Wipe control panel with a soft cloth. Allow it to dry completely before using.

NOTE: All attachments are BPA free. Accessories are top-rack dishwasher safe and should NOT be cleaned with a heated dry cycle. Ensure blade assemblies and lids are removed from the containers before placing in the dishwasher. Exercise care when handling blade assemblies

BLENDSENSE TECHNOLOGY

Intelligent BlendSense program revolutionises traditional blending by sensing your ingredients and blending to perfection every time. The BlendSense program will be active by default. Press  the button, then START/STOP. Once the program begins, it will automatically stop when blending is complete. To stop blending before the end of the program, press the dial again.

Simply press the dial to start the BlendSense program



BlendSense is best used to achieve smooth blends such as smoothies, frozen drinks, smoothie bowls, dips, purées, doughs and sauces.

INITIAL BLENDING



SENSING

In the first 15 seconds, actively adjusts speed and time based on ingredients and recipe size.

BLENDING POSSIBILITIES



BLENDING

Blends continuously without pulsing.



CRUSH AND MAX-CRUSH

Detects tougher and frozen ingredients, then adjusts the pulsing pattern for a smooth blend.



THICK MODE

Creates thick spoonable results.



DOUGH

Processes doughs and batters, including pie, pizza, and cookie doughs. Use with Dough Blade Assembly.

NOTE: Once blending possibility is selected, runtime will count up on the display in seconds. Total time varies from seconds up to almost two minutes

ERROR DETECTION



INSTALL


- Illuminates if no vessel is installed or if a vessel is installed incorrectly. To resolve, reinstall the vessel.



ADD LIQUID

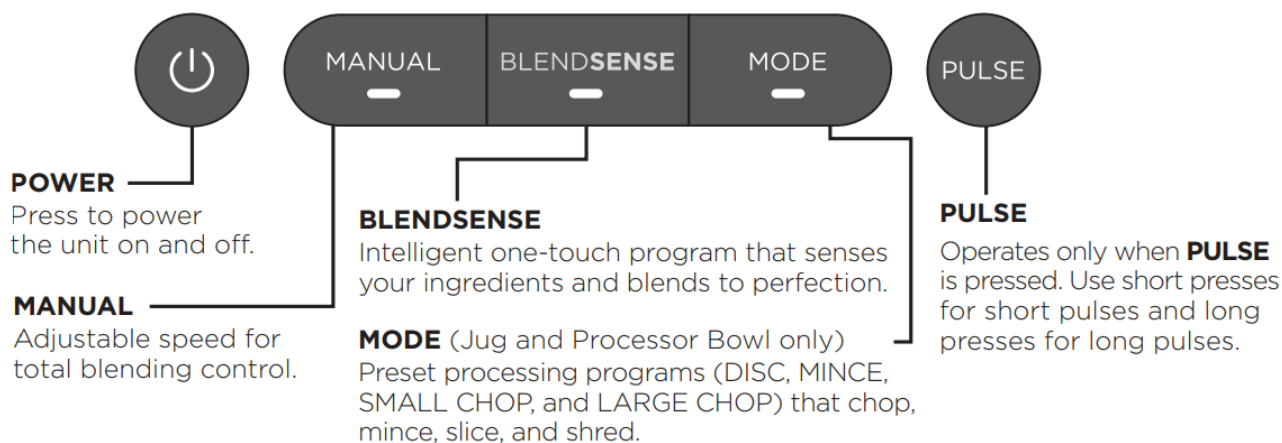


When using the Single-Serve Cup, this illuminates if, during blending, your recipe requires more liquid to blend.

When “ADD LIQUID ”  displays on the dial, press START/STOP and remove the cup from the base. Add 120-240ml of additional liquid. Reinstall the cup, then press START/STOP to run the BlendSense program again.

USING THE CONTROL PANEL

NOTE: Press the dial to START or STOP any program. Turn to select.



PROCESSING MODE PROGRAMS



- **DISC:** Processor Bowl only. Use with the Reversible Slicing/Shredding Disc. **MINCE, SMALL CHOP, AND LARGE CHOP:** Jug and Processor Bowl only. Smart preset programs combine unique pausing patterns that process for you. Press **MODE**, turn the dial to select your desired program, then press **START/STOP**. The program will automatically stop when complete. Press the dial again to stop the program sooner. They do not work in conjunction with the BlendSense program or Manual programs

NOTE: Number of seconds is displayed for the program's runtime

MANUAL PROGRAMS



Go manual for total control of your blending speed and textures. Press **MANUAL**, turn the dial to select your desired program, then press **START/STOP**. When selected, each speed runs continuously for 60 seconds. Press the dial again to stop the program sooner. Manual programs do not work in conjunction with the BlendSense program or Processing Mode programs.

VARIABLE SPEED CONTROL (Speeds 1–10): Jug only.

START SLOW (Speeds 1–3): Always start at low speed to better incorporate ingredients and prevent them from sticking to the sides of the vessel.

DIAL UP THE SPEED (Speeds 4–7): Smoother blends call for higher speeds. Low speeds are great for chopping veggies, but you'll need to ramp up for purées and dressings.

HIGH-SPEED BLENDING (Speeds 8–10): Blend until your desired consistency is reached. The longer you blend, the better the breakdown and smoother the outcome will be.

LOW, MEDIUM, HIGH Speeds: Single-Serve Cup and Processor Bowl only

NOTE: Once speed is selected, runtime will count up on the display in seconds.

USING THE JUG

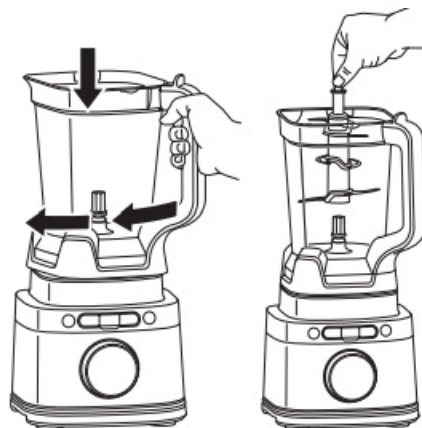
IMPORTANT:

- Review all warnings at the beginning of this Owner's Guide before proceeding.
- As a safety feature, if the jug and lid are not properly installed, the timer will display **INSTALL** and the motor will be disabled. If this happens, repeat step 5

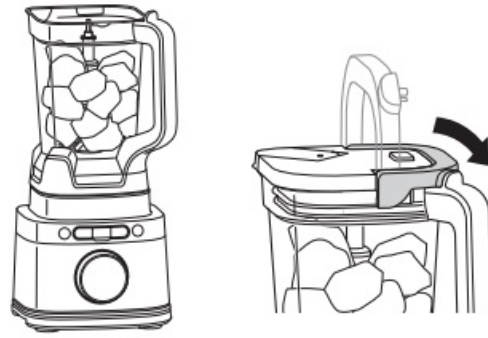
WARNING: Ninja Detect Total Crushing & Chopping Blades (Stacked Blade Assembly) are loose and sharp and **NOT** locked in place. If using the pour spout, ensure the lid is fully locked onto the blender jug. If pouring with the lid removed, carefully remove the Stacked Blade Assembly first, holding it by the shaft. Failure to do so will result in a risk of laceration.

NOTE:

- DO NOT add ingredients before completing the installation of the Stacked Blade Assembly.
 - If the Stacked Blade Assembly is not fully seated, you will not be able to install and lock the lid.
 - The jug lid handle will not fold down unless it is attached to the jug.
 - DO NOT process or grind dry ingredients.
 - For best results, blend fresh leafy greens and herbs in the single-serve cup
1. Plug in motor base and place on a clean, dry, level surface such as a countertop or table.
 2. Lower the jug onto the motor base. The handle should be aligned slightly to the right and the jug should be oriented so the **LOCK** symbols are visible on the motor base. Rotate the jug clockwise until it clicks into place.
 3. Exercising care, grasp the Stacked Blade Assembly by the top of the shaft and place it onto the drive gear inside the jug. Note that the blade assembly will fit loosely onto the drive gear.



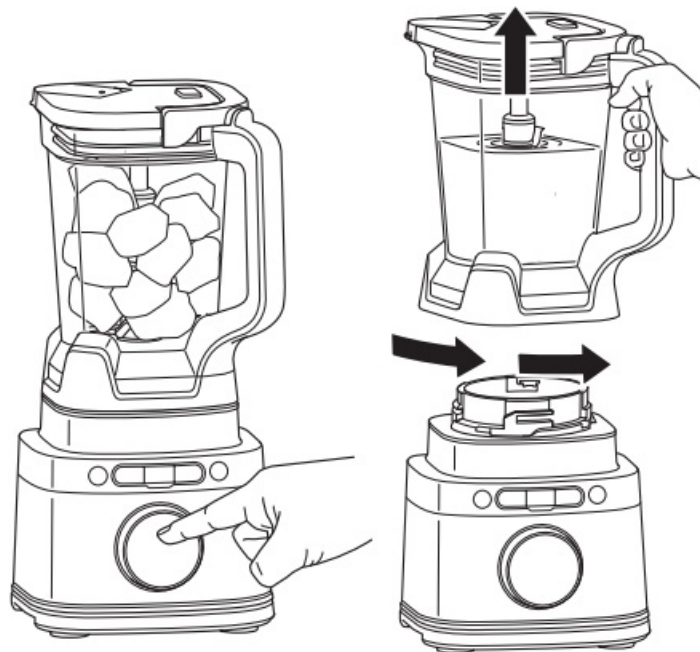
4. Add ingredients to the jug. DO NOT add ingredients past the **MAX LIQUID** line.
5. Place the lid on the jug. Press down on the handle until it clicks into place. Once the lid is locked in place, press the **Power** button to turn unit on. The **BlendSense** program will illuminate.



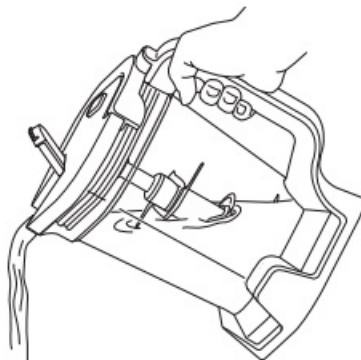
6. 6a If using the BlendSense program, simply press the dial. The program will automatically stop once complete. To stop the unit at any time, press the dial again.

- 6b If using a Processing Mode program, select MODE, then use the dial to select your desired program. To start, press the dial. The program will automatically stop once complete. To stop the unit at any time, press the dial again.
- 6c If using a Manual program, select MANUAL, then use the dial to select your desired speed (1–10). To start, press the dial. Once the ingredients have reached your desired consistency, press the dial again or wait 60 seconds for the unit to come to a complete stop on its own.

7. To remove the jug from the motor base, turn the jug anti-clockwise and then lift up

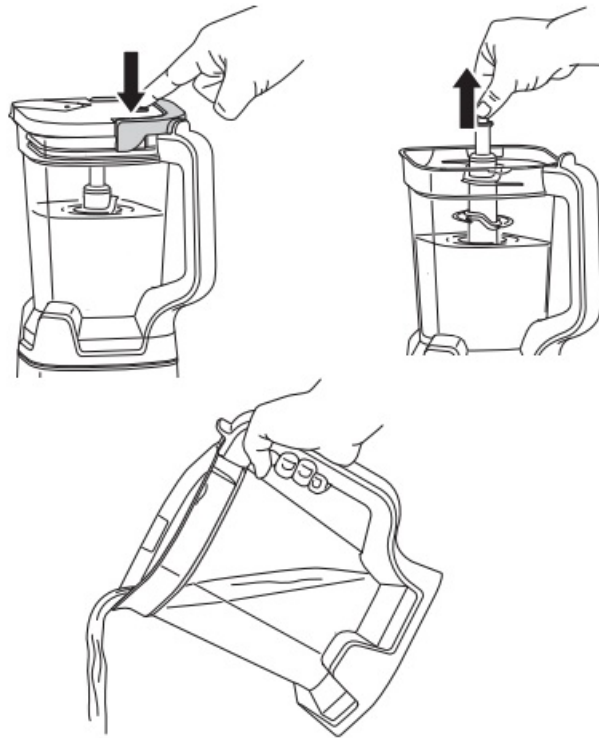


8. a To pour out thinner mixtures, ensure the lid is locked in place, then open the pour spout cap.



- b For thicker mixtures that cannot be emptied through the pour spout, remove the lid and Stacked Blade Assembly before pouring. To remove the lid, press the RELEASE button and lift the handle. To remove the blade assembly, carefully grasp it by the top of the shaft and pull straight up. The jug can then be

emptied.



9. Turn the unit off by pressing the Power button. Unplug the unit when finished. Refer to the Care & Maintenance section for cleaning and storage instructions.

BLADE ASSEMBLIES

USING THE POWER FOOD PROCESSOR BOWL BLADE ASSEMBLIES

IMPORTANT:

- Review all warnings at the beginning of this Owner's Guide before proceeding.
- As a safety feature, if the processor bowl and lid are not properly installed, the timer will display INSTALL and the motor will be disabled. If this happens, repeat step 5

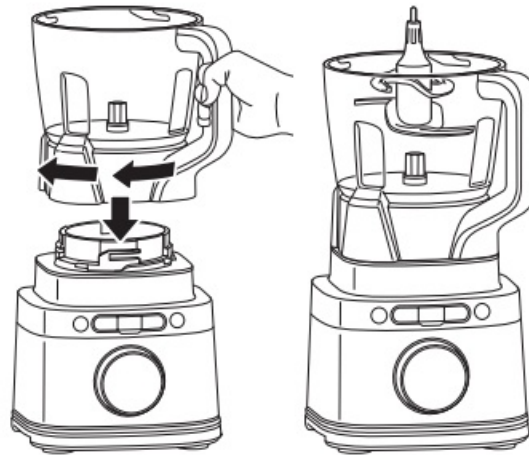
WARNING: Chopping Blade Assembly is loose, sharp, and NOT locked in place. Before removing blended ingredients from the bowl, carefully remove the blade assembly first, holding it by the shaft. Failure to do so will result in a risk of laceration.

NOTE:

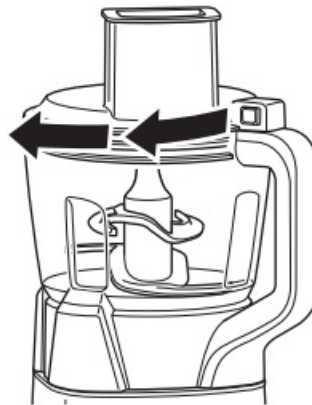
- DO NOT process or grind dry ingredients.
 - DO NOT add ingredients before completing the installation of the blade assembly.
 - Follow the same instructions to install the Dough Blade Assembly as the Chopping Blade Assembly
1. Plug in motor base and place on a clean, dry, level surface such as a countertop or table.
 2. Lower the Power Food Processor Bowl onto the motor base and rotate clockwise until it clicks into place.
 3. To install the blade assembly, exercise care and grasp the Chopping Blade Assembly by the top of the shaft and place it onto the drive gear inside the bowl. Note that the Chopping Blade Assembly will fit loosely onto the

drive gear.

4. Add ingredients to the bowl, making sure not to exceed the MAX FILL line.

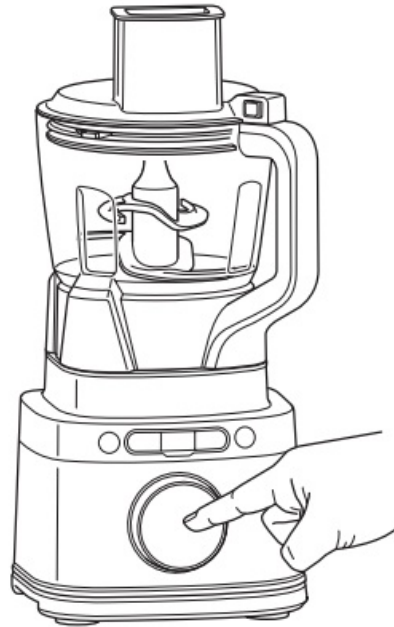


5. Place the feed chute lid on the bowl and turn clockwise until you hear a click, indicating the lid is locked in place. Once the lid is locked in place, press the Power button to turn unit on. The BlendSense program will illuminate.



6. 6a If using the BlendSense program, simply press the dial. The program will automatically stop once complete. To stop the unit at any time, press the dial again.
 - b If using a Processing Mode program, select MODE, then use the dial to select your desired program. To start, press the dial. The program will automatically stop once complete. To stop the unit at any time, press the dial again.

NOTE: When using the Chopping Blade Assembly, it is recommended to use MINCE, SMALL CHOP, or LARGE CHOP. Processing Mode programs are not recommended when using the Dough Blade Assembly
 - c If using a Manual program, select MANUAL, then use the dial to select your desired speed (LOW, MEDIUM, or HIGH). To start, press the dial. Once the ingredients have reached your desired consistency, press the dial again or wait 60 seconds for the unit to come to a complete stop on its own.



NOTE: When using the Dough Blade Assembly, only use LOW speed

7. When finished, press the button on the lid near the handle to unlock, then turn it anti-clockwise and lift up from the bowl. Always remove the Chopping Blade Assembly before emptying the ingredients from the bowl. To remove the Chopping Blade Assembly, carefully grasp it by the top of the shaft and lift it out of the bowl.
8. To remove the bowl from the motor base, turn the bowl anti-clockwise and then lift up.
9. Turn the unit off by pressing the Power button. Unplug the unit when finished. Refer to the Care & Maintenance section for cleaning and storage instructions.

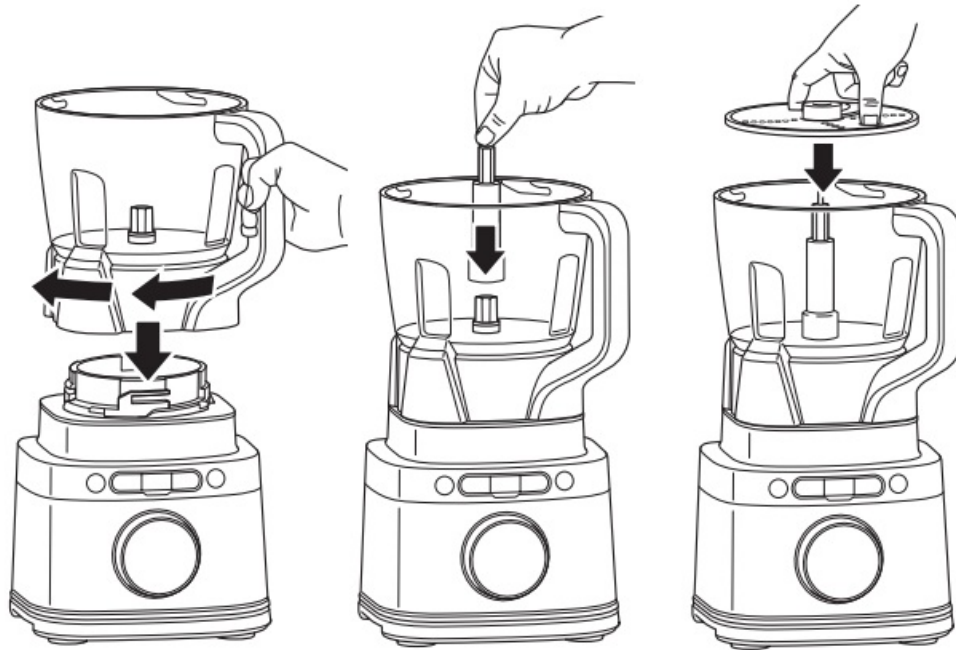


USING THE REVERSIBLE SLICING/SHREDDING DISC

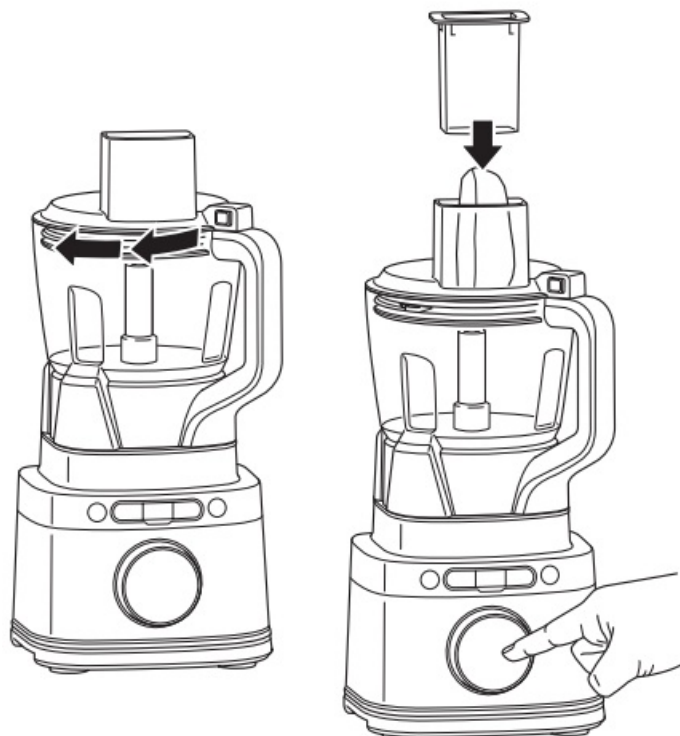
NOTES:

- The Slicing/Shredding Disc is reversible. Use the side labelled “Slicer” for slicing. Carefully flip the disc over to the side labelled “Shredder” for shredding.
- The feed chute lid features a pusher to guide food through the chute.

1. Plug in motor base and place on a clean, dry, level surface such as a countertop or table.
2. Lower the Power Food Processor Bowl onto the motor base and rotate clockwise until it clicks into place.
3. To install the Reversible Slicing/Shredding Disc, place the disc spindle onto the drive gear inside the bowl. Then, use the finger holes to grasp the Reversible Slicing/Shredding Disc and place it over the spindle, with the side you would like to use facing up

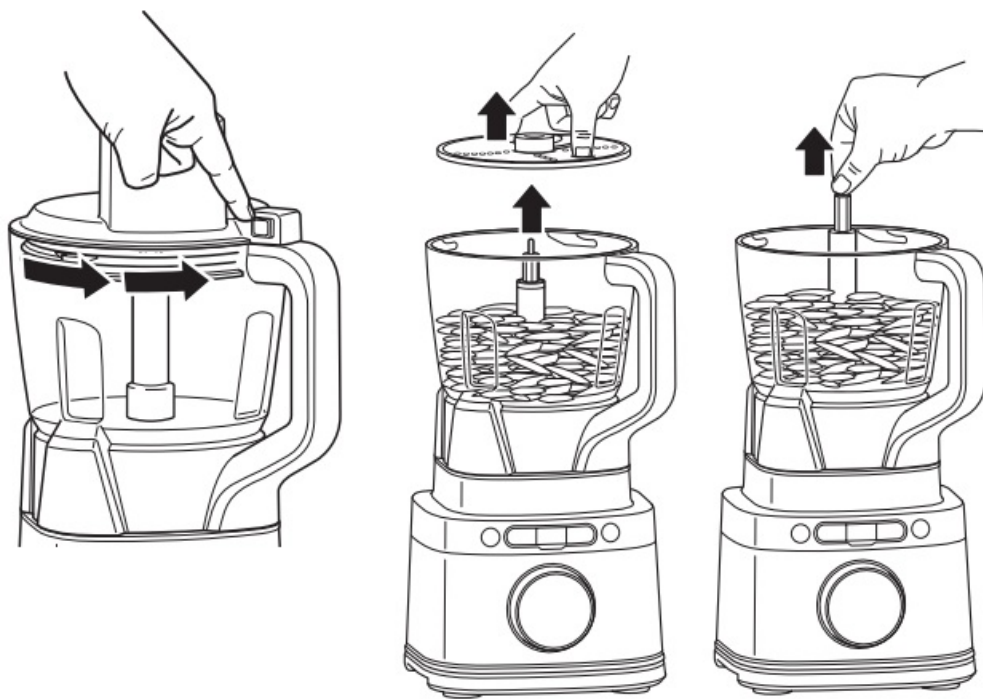


4. Place the feed chute lid on the bowl and turn clockwise until you hear a click, indicating the lid is locked in place. Once the lid is locked in place, press the Power button to turn unit on. The BlendSense program will illuminate.
5. a If using a Processing Mode program, select MODE, then use the dial to select DISC.
 - b If using a Manual program, select MANUAL, then use the dial to select your desired speed (LOW recommended).

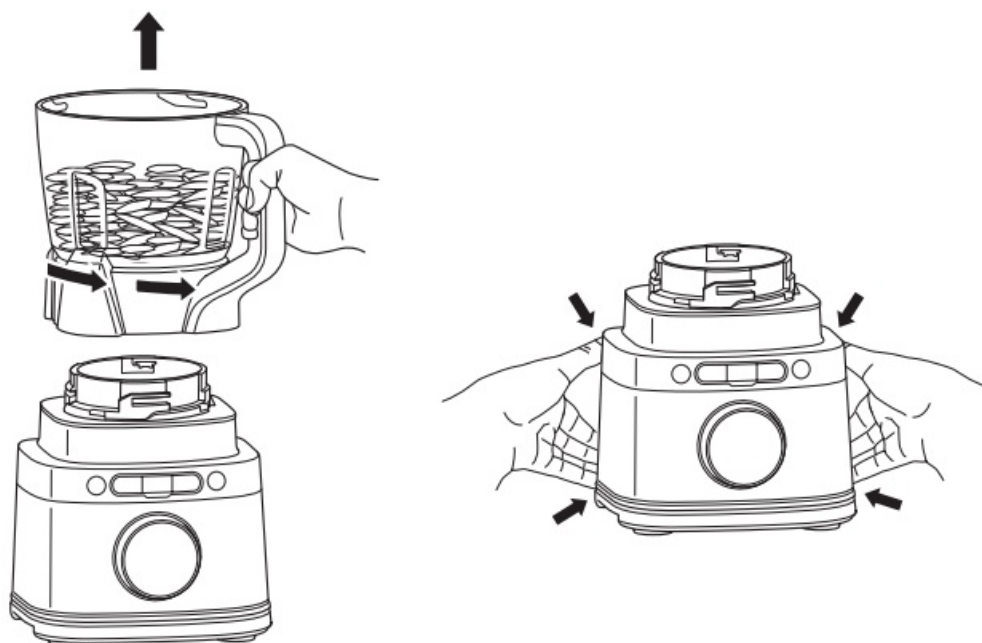


NOTE: It is not recommended to use the BlendSense program with the Reversible Slicing/Shredding Disc.

6. Press the dial to begin the program. Add the prepped ingredients you want to slice or shred through the feed chute on the lid. Use the pusher to help guide the ingredients through the feed chute. The program will automatically stop spinning once completed. To stop the unit at any time, press the dial again.
7. To remove the lid, press the button on the feed chute lid near the handle to unlock, then turn the lid anti-clockwise. Lift the lid from the bowl.
8. Using the finger holes, carefully lift the disc out of the bowl. Then, grasp the spindle by the top of the shaft and lift it out of the bowl.



9. To remove the bowl from the motor base, turn the bowl anti-clockwise and then lift up.
10. Turn the unit off by pressing the Power button. Unplug the unit when finished. Refer to the Care & Maintenance section for cleaning and storage instructions.



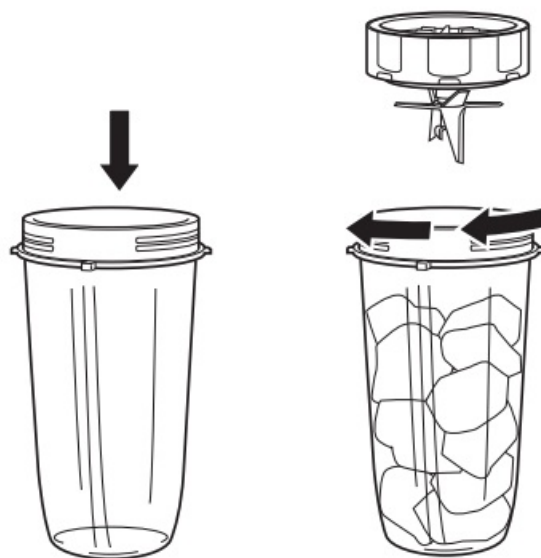
USING THE SINGLE-SERVE CUP

IMPORTANT: Review all warnings at the beginning of this Owner's Guide before proceeding.

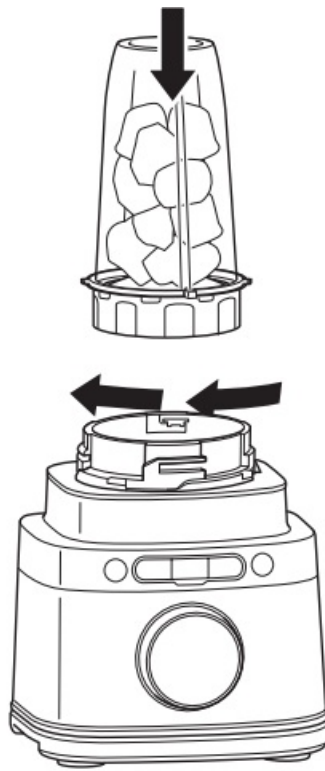
WARNING:

- Handle the Hybrid Edge Blades Assembly with care, as the blades are sharp.
- Remove utensils prior to processing. Failure to remove may cause the Single-Serve Cup to be damaged or to shatter, which may cause personal injury.
- DO NOT blend hot, effervescent, or carbonated liquids. Doing so may cause excessive pressure build-up, resulting in risk of laceration and/or the user being burned.
- DO NOT process or grind dry ingredients.
- Remove the Hybrid Edge Blades Assembly from the Single-Serve Cup upon completion of blending. DO NOT store ingredients before or after blending them in the cup with the blade assembly attached. Some foods may contain active ingredients or release gases that will expand if left in a sealed container, resulting in excessive pressure build-up that can pose a risk of injury

1. Plug in motor base and place on a clean, dry, level surface such as a countertop or table.
2. Add ingredients to the Single-Serve Cup. DO NOT add ingredients past the MAX LIQUID line on the cup.
3. Install the Hybrid Edge Blades Assembly onto the top of the cup. Twist the lid clockwise until it's sealed tightly.



4. Turn the cup upside down and install on the motor base. Align the tabs on the cup with the slots on the base, then rotate cup clockwise until it clicks into place. Once the cup is locked in place, press the Power button to turn unit on. The BlendSense program will illuminate.



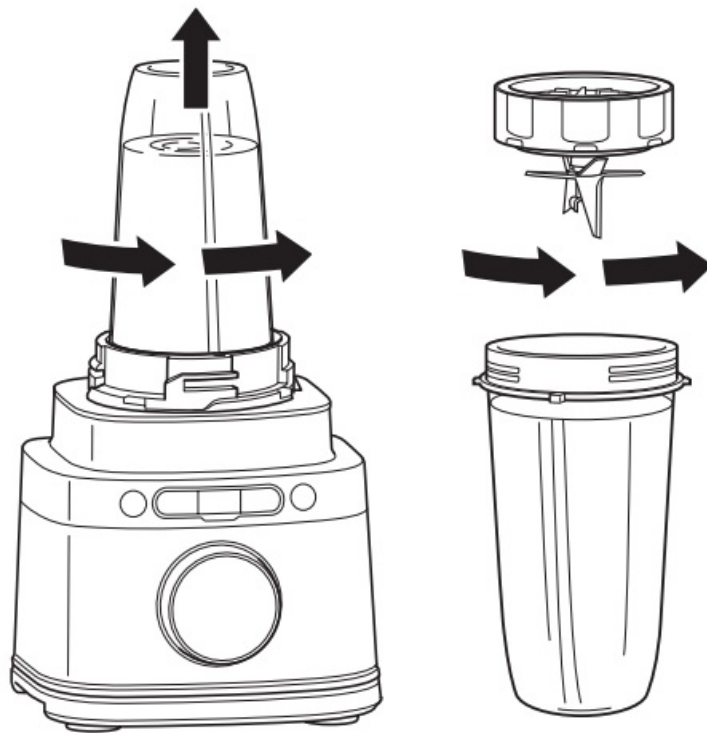
5. 5a If using the BlendSense program, simply press the dial. The program will automatically stop once complete. To stop the unit at any time, press the dial again.

- b If using a Manual program, select MANUAL then use the dial to select your desired speed (LOW, MEDIUM, or HIGH). To start, press the dial. Once the ingredients have reached your desired consistency, press the dial again or wait 60 seconds for the unit to come to a complete stop.

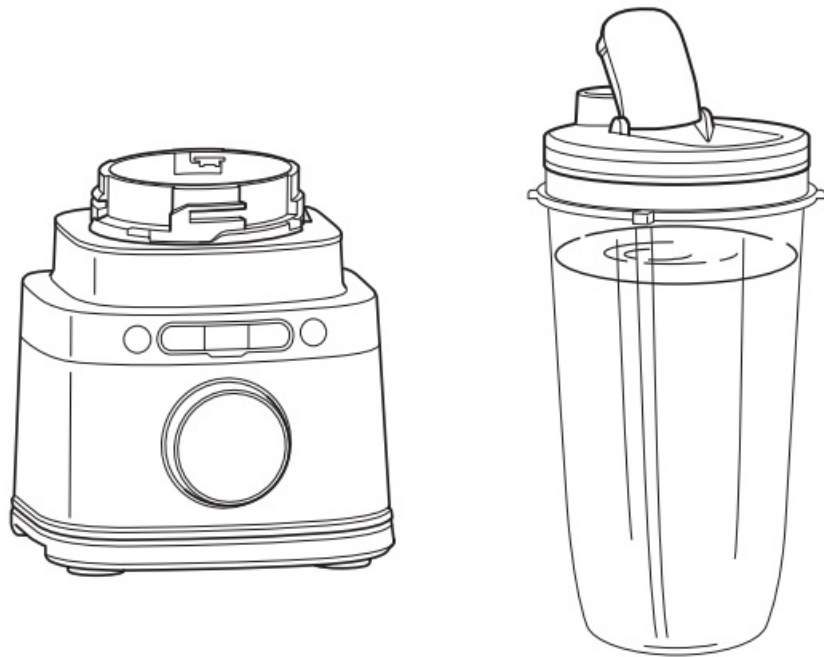


NOTE: Processing Mode programs are only compatible with the jug

6. To remove the cup from the motor base, turn the cup anti-clockwise and then lift up.
7. Remove the Hybrid Edge Blades Assembly by twisting the cap anti-clockwise. DO NOT store blended contents with blade assembly attached. Exercise care when handling the blade assembly, as the blades are sharp.



8. Turn the unit off by pressing the Power button. Unplug the unit when finished. Refer to the Care & Maintenance section for cleaning and storage instructions.
9. To enjoy your drink on the go, place the Spout Lid onto the cup and twist lid clockwise until firmly sealed. For storing ingredients in the cup, use only the Spout Lid to cover.



CARE & MAINTENANCE

CLEANING

Separate all parts. Wash all containers in warm, soapy water with a soft cloth.

- Hand-Washing

Wash blade assemblies in warm, soapy water using a dishwashing utensil with a handle to avoid direct contact

with the blades. Exercise care when handling blade assemblies, as the blades are sharp. Thoroughly rinse and air-dry all parts.

- **Dishwasher**

Accessories are top-rack dishwasher safe but should NOT be cleaned with a heated dry cycle. Ensure the blade assemblies are removed from their containers before placing in the dishwasher. Exercise care when handling blade assemblies.

- **Motor Base**

Turn off the unit and unplug the motor base before cleaning. Wipe motor base with a clean, damp cloth. DO NOT use abrasive cloths, pads, or brushes to clean the base.

STORING

- For cord storage, wrap cord with the hook-and-loop fastener near the back of the motor base. DO NOT wrap the cord around the bottom of the base for storage. Store the unit upright and store all blade assemblies inside or attached to their respective containers with their lids locked in place.
- DO NOT store blended or unblended ingredients in the Single-Serve Cup with the Hybrid Edge Blades assembly attached.
- DO NOT stack items on top of the containers. Store any remaining attachments alongside the unit or in a cabinet where they will not be damaged or create a hazard.

RESETTING THE MOTOR

This unit features a safety system that prevents damage to the motor and drive system should you inadvertently overload the it. If the unit is overloaded, the motor will be temporarily disabled. Should this occur, follow the reset procedure below.

1. Unplug the unit from the electrical outlet.
2. Allow the unit to cool for approximately 15 minutes.
3. Remove the container's lid and blade assembly. Empty the container and ensure no ingredients are jamming the blade assembly.

IMPORTANT: Ensure that maximum capacities are not exceeded. This is the most typical cause of appliance overload. If your unit needs servicing, please call Customer Service at 0800 862 0453. So we may better assist you, please register your product online at ninjakitchen.co.uk/register and have the product on hand when you call.

ORDERING REPLACEMENT PARTS

To order additional parts and attachments, visit ninjakitchen.co.uk

TROUBLESHOOTING GUIDE

WARNING: To reduce the risk of shock and unintended operation, turn power off and unplug unit before troubleshooting

Display will show “INSTALL” once connected to power.

- Place container on the base and rotate it clockwise until container clicks into place. Press the Power button to turn unit on, and the BlendSense program will illuminate, indicating the unit is ready for use.

Display reads “ADD LIQUID ” during the BlendSense Program.

- If the display reads “ADD LIQUID ” during the BlendSense program, the unit detects more liquid is needed to fully blend. Press START/STOP, remove the cup from the base, and add 120-240ml of additional liquid. Reinstall the cup on the base, then press START/STOP to run the BlendSense program again. Only available when using the Single-Serve Cup.

Display reads “Er”.

- If the display reads “Er,” unplug the unit from the electrical outlet and allow it to cool for 15 minutes. Remove the container’s lid and blade assembly and empty the contents to ensure no ingredients are jamming the blade assembly.

Lid/Hybrid Edge blade assembly is hard to install on the cup.

- Set the cup on a level surface. Carefully place the lid or Hybrid Edge Blades Assembly on the top of the cup and align the threads so the lid/Hybrid Edge Blades Assembly sits flat on the cup. Twist clockwise until you have a tight seal.

Unit doesn’t mix well; ingredients get stuck.

- Using the BlendSense program is the easiest way to achieve great results. The pulses and pauses allow the ingredients to settle toward the blade assembly. If ingredients are routinely getting stuck, adding some liquid will usually help.
- When filling the cup, start with liquids or yoghurt, followed by fresh fruit or veggies, then leafy greens or herbs. Next add seeds, powders, or nut butters. Finally, add ice or frozen ingredients.

Motor base won’t stick to the counter or tabletop.

- Make sure surface and suction feet are wiped clean. Suction feet will only stick to smooth surfaces.
- Suction feet will not stick on some surfaces such as wood, tile, and non-polished finishes.
- DO NOT attempt to use unit when the motor base is stuck to a surface that is not secure (cutting board, platter, plate, etc.).

Unit is difficult to remove from counter for storage.

- Place your hands underneath both sides of the motor base and gently pull the unit up and toward you.

Unit displays a blinking “- -” message.

- The unit can detect which container is on the motor base. You may be trying to use a program that is not designed for the container you have installed. The programs will light up, indicating which programs are

available for each container.

Food is not evenly chopped.

- For best results when chopping, cut pieces of ingredients in a uniform size and don't overfill the vessel.

The jug lid handle will not fold down.

- The handle will not fold down if the lid isn't attached to the jug. For storage, place the lid on the jug and press down on the handle until it clicks into place.

PRODUCT REGISTRATION

Please visit ninjakitchen.co.uk/register to register your new Ninja® product within ten (10) days of purchase. You will be asked to provide the store name, date of purchase, and model number along with your name and address. The registration will enable us to contact you in the unlikely event of a product safety notification. By registering, you acknowledge you have read and understood the instructions for use and warnings set forth in the accompanying instructions

GUARANTEE

TWO (2) YEAR LIMITED GUARANTEE

When a consumer buys a product in Europe, they get the benefit of legal rights relating to the quality of the product (your statutory rights). You can enforce these rights against your retailer. We give you an additional manufacturer's guarantee of two years. These terms and conditions relate to our manufacturer's guarantee only – your statutory rights are unaffected. The conditions below describe the prerequisites and scope of our guarantee. They do not affect your statutory rights or the obligations of your retailer and your contract with them.

Ninja® Guarantees

Every Ninja machine comes with a free parts and labour guarantee. You'll also find online support at www.ninjakitchen.eu

How do I register my Ninja guarantee?

You can register your guarantee online within 28 days of purchase. To save time, you'll need the following information about your fan

- Date you purchased the unit (receipt or delivery note).
- To register online, please visit www.ninjakitchen.eu

IMPORTANT:

- The guarantee will only cover your product from the date of purchase.
- Please keep your receipt at all times. Should you need to use your guarantee, we will need your receipt to verify the information you have supplied to us is correct. The inability to produce a valid receipt may invalidate your guarantee.

What are the benefits of registering my free Ninja guarantee?

When you register your guarantee, we'll have your details to hand if we ever need to get in touch. You can also receive tips and advice on how to get the best out of your Ninja unit and hear the latest news about new Ninja® technology and launches. If you register your guarantee online, you'll get instant confirmation that we've received your details.

What is covered by the free Ninja guarantee?

Repair or replacement of your Ninja machine (at Ninja's discretion), including all parts and labour. A Ninja guarantee is in addition to your legal rights as a consumer.

What is not covered by the free Ninja guarantee?

1. Normal wear and tear of wearable parts (such as accessories). Replacement parts are available for purchase at www.ninjakitchen.eu
2. Damage caused by misuse, abuse, negligent handling, failure to perform required maintenance or damage due to mishandling in transit.
3. Damage caused by maintenance not authorised by Ninja.

Where can I buy genuine Ninja spares and accessories?

You'll find a full range of Ninja spares and replacement parts/accessories for all Ninja machines at www.ninjakitchen.eu. Please remember that damage caused by the use of non-Ninja spares may not be covered under your guarantee

REGISTER YOUR PURCHASE

- ninjakitchen.co.uk/register
- Scan the QR code using a mobile device



RECORD THIS INFORMATION

- Model Number:
- Serial Number:
- Date of Purchase:
(Keep receipt)
- Store of Purchase:

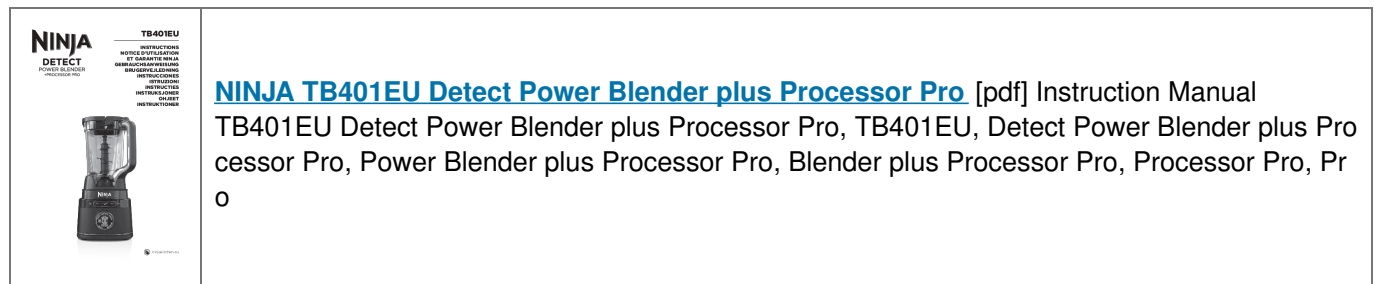
TECHNICAL SPECIFICATIONS

- Voltage: 220V – 240V, 50-60Hz
- Power: 1200 Watts

FAQ

- **Why should I register my Ninja blender warranty?**
 - Registering your product warranty ensures easy access to customer support and service in case of any issues or queries related to your blender.

Documents / Resources



References

- [+ Ninja Kundenservice | Offizielles Support- und Hilfezentrum](#)
- [User Manual](#)

[Manuals+](#), [Privacy Policy](#)

This website is an independent publication and is neither affiliated with nor endorsed by any of the trademark owners. The "Bluetooth®" word mark and logos are registered trademarks owned by Bluetooth SIG, Inc. The "Wi-Fi®" word mark and logos are registered trademarks owned by the Wi-Fi Alliance. Any use of these marks on this website does not imply any affiliation with or endorsement.