



# NINJA JC151EU Never Clog Cold Juicer Instruction Manual

[Home](#) » [Ninja](#) » NINJA JC151EU Never Clog Cold Juicer Instruction Manual 

## Contents

- [1 NINJA JC151EU Never Clog Cold Juicer](#)
- [2 Product Usage Instructions](#)
- [3 IMPORTANT SAFETY INSTRUCTIONS](#)
- [4 PARTS](#)
- [5 FEATURES](#)
- [6 USING THE JUICER](#)
- [7 CARE & MAINTENANCE](#)
- [8 TROUBLESHOOTING GUIDE](#)
- [9 TWO \(2\) YEAR LIMITED GUARANTEE](#)
- [10 FAQ](#)
- [11 Documents / Resources](#)
  - [11.1 References](#)
- [12 Related Posts](#)

# NINJA

**NINJA JC151EU Never Clog Cold Juicer**

**Specifications:**

- Power: 150 watts
- Voltage: 220-240V~, 50-60Hz

**Product Information:**

The Cold Press Juicer is designed to effortlessly extract juice by reducing pulp, providing hassle-free juicing experience. It is equipped with a powerful motor to handle pulp efficiently, ensuring smooth and easy juicing process.

**Product Usage Instructions****Care and Maintenance:**

After each use, disassemble the juicer and clean all parts with warm soapy water. Dry thoroughly before storage to prevent mold growth. Avoid overloading the juicer to prevent malfunction.

**Storage:**




Store the juicer in a cool, dry place away from direct sunlight. Keep all components together to avoid misplacement.

**Overloading the Appliance:**

Avoid overloading the appliance to prevent damage and ensure optimal performance.

**IMPORTANT SAFETY INSTRUCTIONS**

**PLEASE READ ALL INSTRUCTIONS BEFORE USE • FOR HOUSEHOLD USE ONLY**

	Read and review instructions for operation and use.
	Indicates the presence of a hazard that can cause personal injury, death, or substantial property damage if the warning included with this symbol is ignored.
	For indoor and household use only.
When using electrical appliances, basic safety precautions should always be followed, including the following:	

## **WARNING**

To reduce the risk of injury, fire, electrical shock, or property damage, basic safety precautions must always be followed, including the following numbered warnings and subsequent instructions. Do not use appliance for other than intended use.

1. Read all instructions prior to using the appliance and its accessories.
2. Carefully observe and follow all warnings and instructions. This unit contains electrical connections and moving parts that potentially present risk to the user.
3. DO NOT submerge the motor base or control panel in water or other liquids.
4. DO NOT spray motor base or control panel with any liquid. Take inventory of all contents to ensure you have all parts needed to properly and safely operate your appliance.
5. Always make sure pulp spout is securely in place before motor is turned on. DO NOT unfasten parts while juicer is in operation.
6. Be sure to turn the appliance off after each use. Make sure the motor stops completely before disassembling.
7. Turn the appliance OFF, then unplug the appliance from the outlet when not in use, before assembling or disassembling parts, and before cleaning. To unplug, grasp the plug by the body and pull from the outlet. NEVER unplug by grasping and pulling the flexible cord.
8. Before use, wash all parts that may contact food. Follow washing instructions covered in this instruction manual.
9. Before each use, inspect auger for damage. If auger is bent or damage is suspected, contact SharkNinja to arrange for replacement.
10. DO NOT use this appliance outdoors. It is designed for indoor household use only.
11. DO NOT modify the plug in any way.
12. DO NOT operate any appliance with a damaged cord or plug, or after the appliance malfunctions, or is dropped or damaged in any manner. This appliance has no user-serviceable parts. If damaged, contact SharkNinja for servicing.
13. This appliance has important markings on the plug blade. The entire supply cord is not suitable for replacement. If damaged, please contact SharkNinja for service.
14. Extension cords should NOT be used with this appliance.
15. To protect against the risk of electric shock, DO NOT submerge the appliance or allow the power cord to contact any form of liquid.
16. DO NOT allow the cord to hang over the edges of tables or counters. The cord may become snagged and pull the appliance off the work surface.
17. DO NOT allow the unit or the cord to contact hot surfaces, including stoves and other heating appliances.
18. ALWAYS use the appliance on a dry and level surface.
19. DO NOT allow children to operate this appliance or use as a toy. Close supervision is necessary when any appliance is used near children.

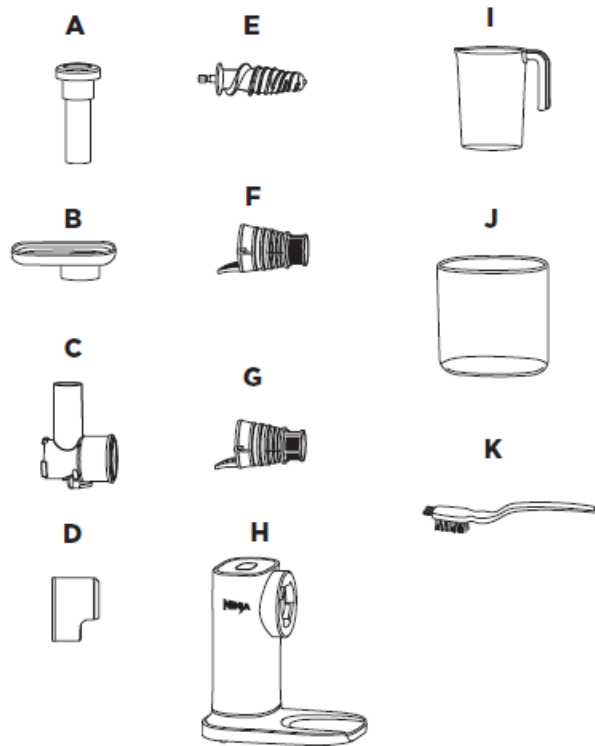
20. This appliance is NOT intended to be used by people with reduced physical, sensory, or mental capabilities, or lack of experience and knowledge, unless they have been given supervision or instruction concerning use of the appliance by a person responsible for their safety.
21. ONLY use attachments and accessories that are provided with the product or are recommended by SharkNinja. The use of attachments, including canning jars, not recommended or sold by SharkNinja may cause fire, electric shock, or injury.
22. DO NOT put your fingers or other objects into the juicer opening while it is in operation. If food becomes lodged in opening, use the tamper or another piece of fruit or vegetable to push it down. When this method is not possible, turn the motor off and disassemble juicer to remove the remaining food.
23. Keep hands, hair, and clothing out of the container when loading and operating.
24. During operation and handling of the appliance, avoid contact with moving parts.
25. DO NOT use the appliance if the rotating sieve is damaged.
26. DO NOT operate the appliance without the pulp container in place.
27. DO NOT microwave container or accessories provided with the appliance.
28. NEVER leave the appliance unattended while in use.
29. DO NOT juice hot liquids. Doing so may result in pressure buildup and steam exposure that can pose a risk of the user being burned.
30. NEVER operate the appliance without lids and caps in place. DO NOT attempt to defeat the interlock mechanism. Ensure attachments are properly installed before operation.
31. Before operation, ensure all utensils are removed from container. Failure to remove utensils can cause container to shatter and potentially result in personal injury and property damage.
32. DO NOT attempt to remove the feed chute chamber from the motor base while the auger is still spinning. Allow the appliance to come to a complete stop before removing attachments.
33. If the appliance is overloaded, the unit will temporarily disable the motor. Wait approximately 2 minutes before using again.
34. DO NOT juice hot ingredients.
35. Remove the seeds and pits from fruits such as mangoes or plums, as well as peels and tough skins from fruits such as oranges, lemons, and limes, as they could damage the unit.
36. DO NOT add water to the feed chute while the unit is operating to clean the unit.
37. DO NOT submerge the motor base or control panel in water or other liquids.
38. DO NOT spray motor base or control panel with any liquid.
39. DO NOT attempt to sharpen auger.
40. Turn off the appliance and unplug the motor base before cleaning.
41. DO NOT add frozen fruit, frozen vegetables, or ice to the juicer.
42. Consumers with sensitivity to pulp may wish to strain their juice as a precaution.

## **SAVE THESE INSTRUCTIONS**

## **PARTS**

- A Tamper
- B Food Tray
- C Feed Chute Chamber with Anti-Drip Lever
- D Pulp Spout

- E Auger
- F Black Filter (less pulp)
- G Orange Filter (lots of pulp)
- H Motor Base  
(power cord not shown)
- I Juice Jug
- J Pulp Container
- K Cleaning Brush



## BEFORE FIRST USE

**IMPORTANT:** Review all warnings at the beginning of this Owner's Guide before proceeding.

**NOTE:** All attachments are BPA free and dishwasher safe.

1. Remove all packaging materials from the unit.
2. Wash parts in warm, soapy water, then thoroughly rinse and air-dry all parts.
3. Wipe control panel with a soft cloth. Allow it to dry completely before using.

## ORDERING REPLACEMENT PARTS

To order additional parts and attachments, visit [ninjakitchen.eu](http://ninjakitchen.eu)

## FEATURES

The juicer comes with a tamper stick, food tray, juice cup, and motor base. It offers different filters for controlling the amount of pulp in the juice.

## USING THE CONTROL PANEL

Before use, read all safety warnings in the manual. Align the metal part of the filter at the bottom of the auger

before operation.



### **START/STOP**

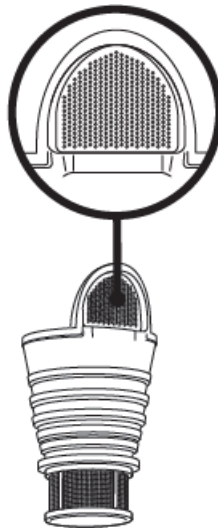
Press once to start continuous running up to 12 minutes; press again to stop.

### **HOLD**

If the feed chute chamber becomes blocked or ingredients are not processing, press and hold HOLD. There will be a beep and a brief pause, then the auger will rotate in the opposite direction. Release HOLD to stop. Repeat as needed. Press START/STOP to resume normal operation.

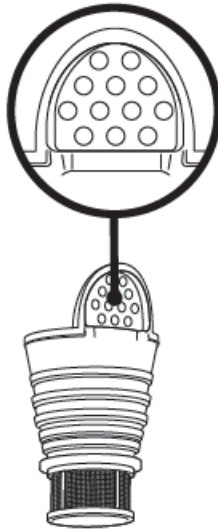
### **USING THE FILTERS FOR PULP CONTROL**

Control the amount of pulp by choosing the appropriate filter.



### **LESS PULP**

Use the Black filter with the finest mesh for juice with less pulp.



### LOTS OF PULP

Use the Orange filter with the largest mesh for juice with lots of pulp.

**NOTE:** For best results, we recommend using the Orange (Lots of Pulp) filter when processing soft fibrous fruits like pears, berries, seeded melons, and pineapple.

### USING THE JUICER

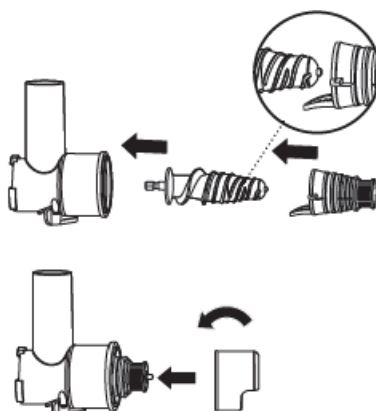
Ensure all parts are properly assembled. Place fruits or vegetables into the feeding chute and use the tamper stick to push them down for juicing.

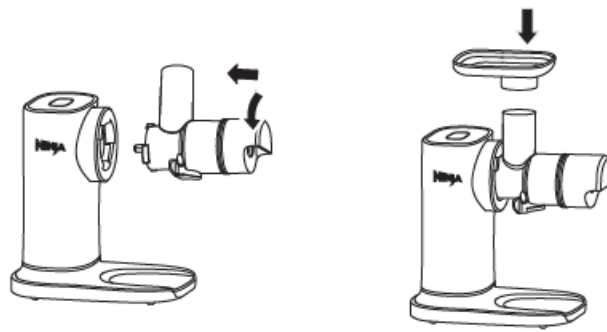
### IMPORTANT:

- Review all warnings before proceeding.
- DO NOT add frozen fruits and vegetables or ice to the unit.

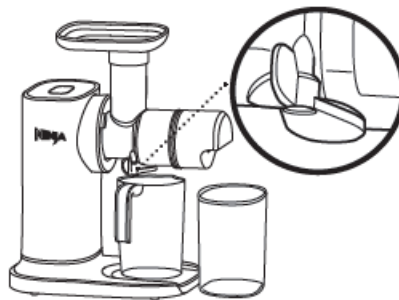
**NOTE:** If the feed chute chamber becomes blocked or ingredients are not processing, press and hold REVERSE. There will be a beep and a brief pause, then the auger will rotate in the opposite direction. Release REVERSE to stop. Repeat as needed. Press START/STOP to resume normal operation.

1. Plug in motor base and place on a clean, dry, level surface such as a countertop or table.
2. Insert the auger into the feed chute chamber, then attach the desired filter onto the auger, with the metal portion of the filter on the bottom of the auger. The filter will sit loosely around the auger.
3. Attach the pulp spout to the feed chute chamber by installing at an angle on top of the filter, then turning counterclockwise to lock in place.

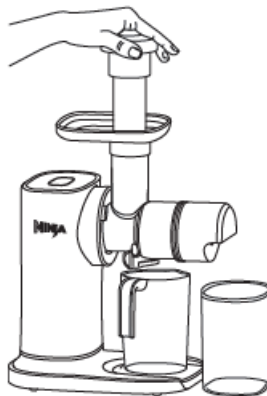




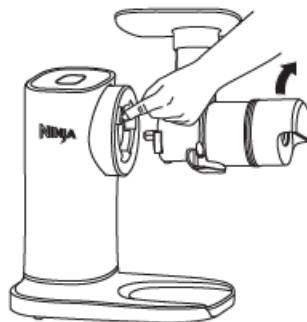
4. Install the assembled feed chute chamber on the motor base at an angle, then turn counterclockwise until it clicks into place.
5. Install the food tray on the top of the feed chute chamber.
6. Place the pulp container under the pulp spout, then place the juice jug under the anti-drip lever on the feed chute chamber.



Make sure the antidrip lever is open before juicing.



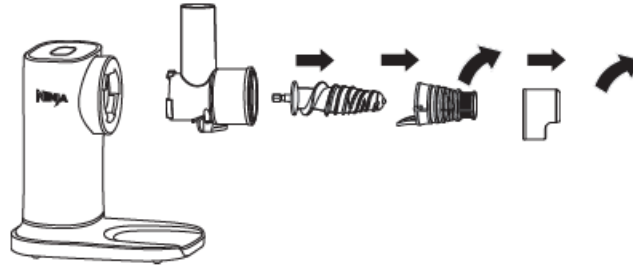
7. Select START/STOP, then gradually add ingredients to the feed chute. For best results, allow juicer to process each ingredient before adding more. Use the tamper to push ingredients down through the feed chute, as needed.
8. When juicing is complete, select START/STOP, then close the anti-drip lever. Stir juice and serve.



9. To disassemble, press and hold the RELEASE button while turning the feed chute chamber clockwise and removing it from motor base.
10. Remove the pulp spout from the feed chute chamber by turning clockwise. Remove the filter and auger by gently pulling them out of the feed chute chamber.



11. Unplug the unit when finished. If moving the unit, grab from the bottom of the base. Refer to the Care & Maintenance section for cleaning and storage instructions.



## CARE & MAINTENANCE

**IMPORTANT:** DO NOT attempt to clean the unit by adding water to the feed chute chamber while attached to the motor base.

### CLEANING

- Hand-Washing

Separate all parts and wash in warm, soapy water with a soft cloth. Thoroughly rinse and air-dry all parts.

- Dishwasher

All parts, except the motor base, are top-rack dishwasher safe and should NOT be cleaned with a heated dry cycle.

- Motor Base

Unplug the motor base before cleaning. Wipe with a clean, damp cloth.

- Filters

If there is pulp build up on the metal portion of the filter, use a cleaning utensil or toothpick to remove the excess before washing.

### STORING

For cord storage, wrap cord with hook-and-loop fastener near the back of the motor base.

DO NOT wrap the cord around the bottom of the base for storage. When moving the unit, lift from the bottom of the motor base. Store the auger and filter assembled in the feed chute chamber with the pulp spout installed. Place the juice jug into the pulp container for easy storage.

### OVERLOADING THE UNIT

This unit features a unique safety system that prevents damage to the motor and drive system should you inadvertently overload the motor. If the unit is overloaded, the motor will be temporarily disabled. Should this occur, wait 2 minutes, then press START/STOP to start the unit. If your unit needs servicing, please call Customer Service at 1-[877-646-5288](tel:877-646-5288). So we may better assist you, please register your product online at [registeryourninja.com](http://registeryourninja.com) and have the product on hand when you call.

### TROUBLESHOOTING GUIDE

If the REVERSE program is not working, check for any blockages or improper assembly. Contact customer support if issues persist.

**WARNING:** To reduce the risk of shock and unintended operation, turn power off and unplug unit before troubleshooting.

### **The REVERSE program is not operating.**

- After pressing and holding REVERSE, there will be a beep and a brief pause, then the auger will rotate in the opposite direction. Release REVERSE to stop. Repeat as needed. Press START/STOP to resume normal operation.

### **The unit stopped working and is beeping.**

- The unit was overloaded with ingredients. Wait 2 minutes then press START/STOP to start the unit.

### **Can I juice fruit with seeds and pits in it?**

- No. Seeds and pits should be removed from the fruit prior to juicing. For example, remove the seeds from cherries and the pit from a plum.

### **Can I juice frozen fruits and vegetables or add ice?**

- No, do not use frozen fruit, frozen vegetables, or ice with this unit.

### **The unit makes a squeaking noise when I juice certain ingredients.**

- When the auger is breaking down fibrous ingredients like apples, celery, herbs, and leafy greens, the unit will sometimes make this noise. This is normal and not a cause for concern.

### **The unit is producing less juice than I anticipated based on the amount of produce I used.**

- With the Ninja Cold Press Juicer, you can expect 450g of produce to yield approximately 250ml of juice.
- Depending on the seasonality of ingredients, you may experience lower juice and pulp yield when using the Less Pulp Filter. If this occurs, try using the Lots of Pulp Filter.

## **TWO (2) YEAR LIMITED GUARANTEE**

When a consumer buys a product in Europe, they get the benefit of legal rights relating to the quality of the product (your statutory rights). You can enforce these rights against your retailer. We give you an additional manufacturer's guarantee of two years. These terms and conditions relate to our manufacturer's guarantee only – your statutory rights are unaffected. The conditions below describe the prerequisites and scope of our guarantee. They do not affect your statutory rights or the obligations of your retailer and your contract with them.

### **Ninja® Guarantees**

Every Ninja machine comes with a free parts and labour guarantee. You'll also find online support at [www.ninjakitchen.eu](http://www.ninjakitchen.eu)

### **How do I register my Ninja guarantee?**

You can register your guarantee online within 28 days of purchase. To save time, you'll need the following information about your product.

- Date you purchased the unit (receipt or delivery note).

- To register online, please visit [www.ninjakitchen.eu](http://www.ninjakitchen.eu)

## **IMPORTANT:**

- The guarantee will only cover your product from the date of purchase.
- Please keep your receipt at all times. Should you need to use your guarantee we will need your receipt to verify the information you have supplied to us is correct. The inability to produce a valid receipt may invalidate your guarantee.

### **What are the benefits of registering my free Ninja guarantee?**

When you register your guarantee we'll have your details to hand if we ever need to get in touch. You can also receive tips and advice on how to get the best out of your Ninja unit and hear the latest news about new Ninja® technology and launches. If you register your guarantee online, you'll get instant confirmation that we've received your details.

### **What is covered by the free Ninja guarantee?**

Repair or replacement of your Ninja machine (at Ninja's discretion), including all parts and labour. A Ninja guarantee is in addition to your legal rights as a consumer.

### **What is not covered by the free Ninja guarantee?**

1. Normal wear and tear of wearable parts (such as accessories). Replacement parts are available for purchase at [www.ninjakitchen.eu](http://www.ninjakitchen.eu)
2. Damage caused by misuse, abuse, negligent handling, failure to perform required maintenance or damage due to mishandling in transit.
3. Damage caused by maintenance not authorized by Ninja.

### **Where can I buy genuine Ninja spares and accessories?**

You'll find a full range of Ninja spares and replacement parts/accessories for all Ninja machines at [www.ninjakitchen.eu](http://www.ninjakitchen.eu)

Please remember that damage caused by the use of non-Ninja spares may not be covered under your guarantee.



## **REGISTER YOUR PURCHASE**

- [ninjakitchen.co.uk/registerguarantee](http://ninjakitchen.co.uk/registerguarantee)
- Scan QR code using mobile device

## **RECORD THIS INFORMATION**

- Model Number: \_\_\_\_\_
- Serial Number: \_\_\_\_\_
- Date of Purchase: \_\_\_\_\_

(Keep receipt)

- Store of Purchase: \_\_\_\_\_

Illustrations may differ from actual product. We are constantly striving to improve our products, therefore the specifications contained herein are subject to change without notice. NINJA is a registered trademark in the European Union of SharkNinja Operating LLC.

© 2024 SharkNinja Operating LLC. PRINTED IN CHINA

SharkNinja Germany GmbH, Rotfeder-Ring 9, 60327 Frankfurt am Main, Germany

[ninjakitchen.eu](https://ninjakitchen.eu)

SharkNinja Europe Ltd, 1st/2nd Floor Building 3150, Thorpe Park, Century Way, Leeds, England, LS15 8ZB

[ninjakitchen.co.uk](https://ninjakitchen.co.uk)

## FAQ

- **Can I juice fruits with seeds and pits?**

Avoid juicing fruits with hard seeds or pits as they may damage the juicer. Remove seeds and pits before juicing for best results.

- **What are the benefits of registering my Ninja warranty?**


Registering your warranty ensures quick assistance in case of product issues and access to exclusive offers and promotions. Visit

[www.ninjakitchen.eu/register-guarantee](https://www.ninjakitchen.eu/register-guarantee) for registration.

- **What does the warranty cover?**

The warranty covers manufacturing defects and malfunctions under normal usage conditions. Refer to the warranty terms for detailed coverage.

## Documents / Resources

	<p><b><a href="#">NINJA JC151EU Never Clog Cold Juicer</a> [pdf] Instruction Manual</b></p> <p>JC151EU Never Clog Cold Juicer, JC151EU, Never Clog Cold Juicer, Clog Cold Juicer, Cold Juicer, Juicer</p>
---	---

## References

- [User Manual](#)

[Manuals+](#), [Privacy Policy](#)

This website is an independent publication and is neither affiliated with nor endorsed by any of the trademark owners. The "Bluetooth®" word mark and logos are registered trademarks owned by Bluetooth SIG, Inc. The "Wi-Fi®" word mark and logos are registered trademarks owned by the Wi-Fi Alliance. Any use of these marks on this website does not imply any affiliation with or endorsement.