



NINGBO VLH26 LED Bluetooth Controller User Manual

[Home](#) » [Ningbo](#) » NINGBO VLH26 LED Bluetooth Controller User Manual 

Contents

- [1 NINGBO VLH26 LED Bluetooth Controller](#)
- [2 Product Information](#)
- [3 Product Usage Instructions](#)
- [4 FAQ](#)
- [5 Technical Parameters](#)
- [6 Download App Software](#)
- [7 Instructions](#)
- [8 FCC Statement](#)
- [9 Documents / Resources](#)
 - [9.1 References](#)

NINGBO

NINGBO VLH26 LED Bluetooth Controller



Product Information

Specifications

- **Product Name:** LED Bluetooth Controller
- **Support System:** Android 4.4 and above/iOS 10.0 and above
- **Signal Mode:** Bluetooth 4.0

Product Usage Instructions

Color Adjustment

You can adjust the color using the color circle or select a single color. Customize the color and adjust the brightness of the white light by dragging the ring.

Device List Connections

Turn on the Bluetooth function on your mobile phone. For Android users, also enable the location function and allow necessary permissions. On the home page of the app, manually pull down to refresh and search for nearby devices. Click on the LED BLE device to access the lighting control interface.

Music Control

Utilize voice control or music for changing light effects. Voice control allows setting colors, modes, sensitivity, and effect changes. Music control involves playing songs on your phone to change lighting effects.

Mode Selection

Select one of the available modes or create a custom mode by selecting a color and adding songs from the song list.

FAQ

- **Q: How do I download the App software for the LED Bluetooth Controller?**

- A: Search for “LED LAMP” in major Centers or scan the provided QR code.

- **Q: Can I customize the color modes on the LED Bluetooth Controller?**

- A: Yes, you can customize modes to add custom color modes and select different lighting effects.

Technical Parameters

- Product Name RGB Light
- Support System Android4.4 and above/iOS10.0 and above
- Signal Mode Bluetooth 4.0

Download App Software

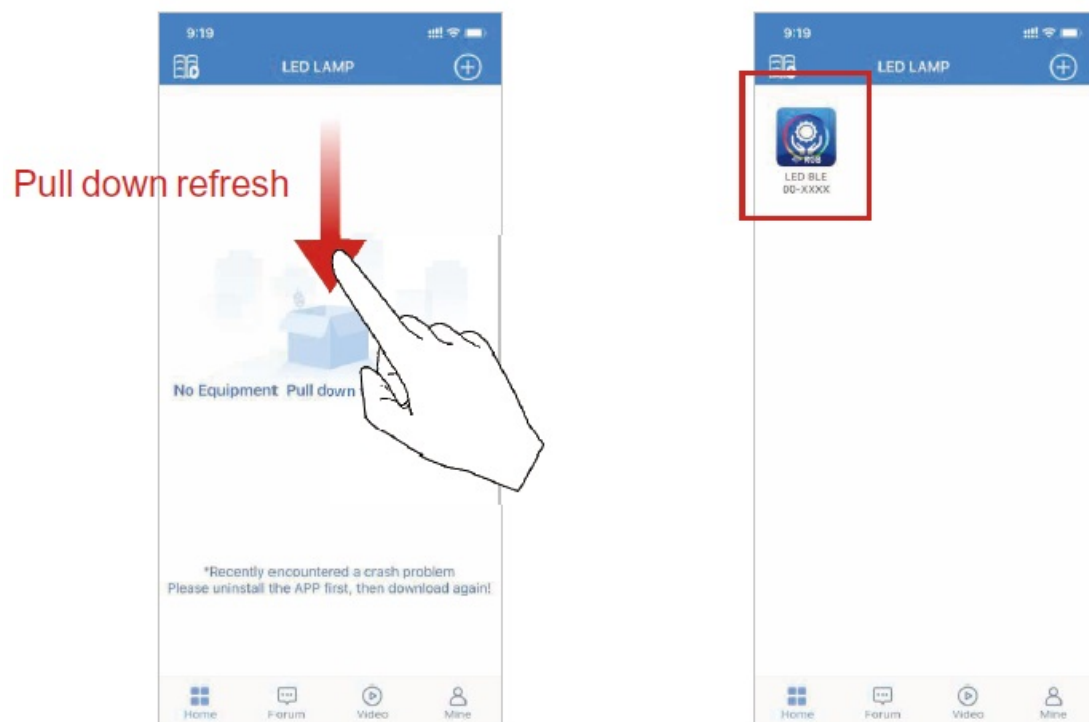
Please search LED LAMP in major Appcenters, or scan below QR code.




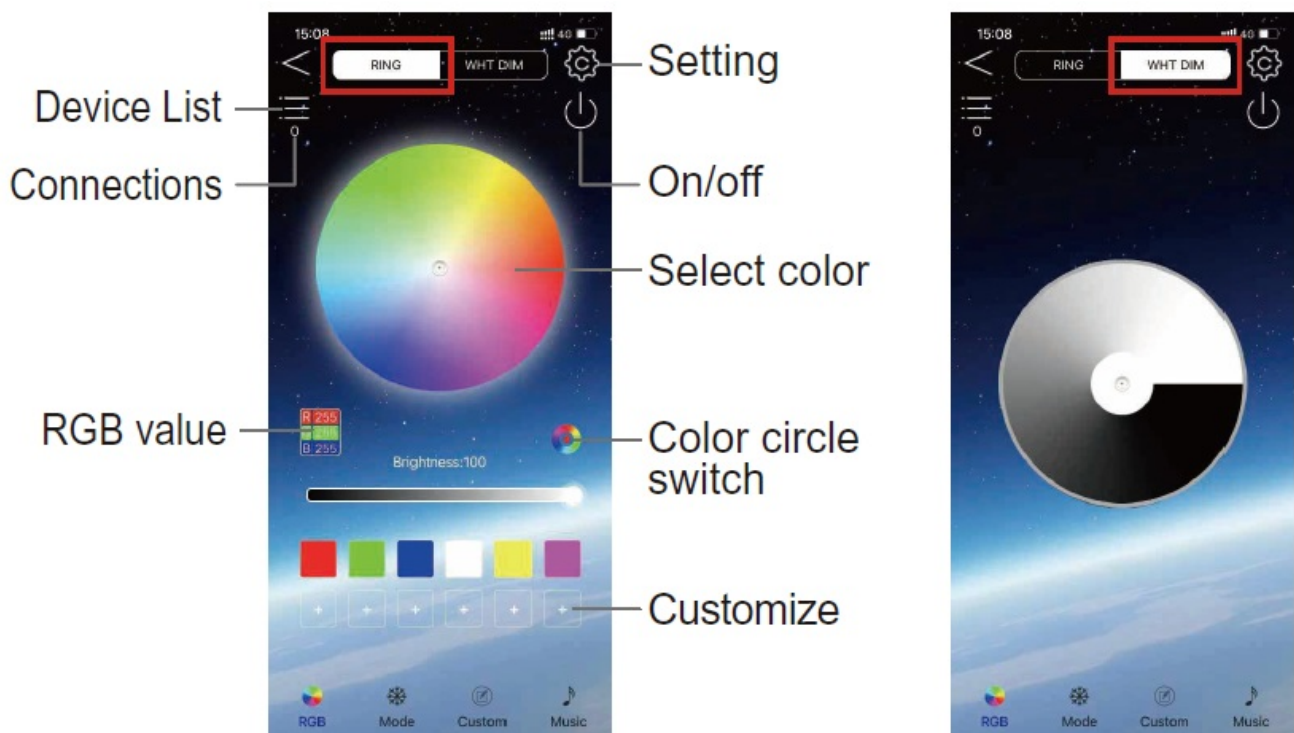
- First of all, you need to turn on the Bluetooth function of your mobile phone.
- Android phone users, also turn on the location function and allow permissions



Instructions

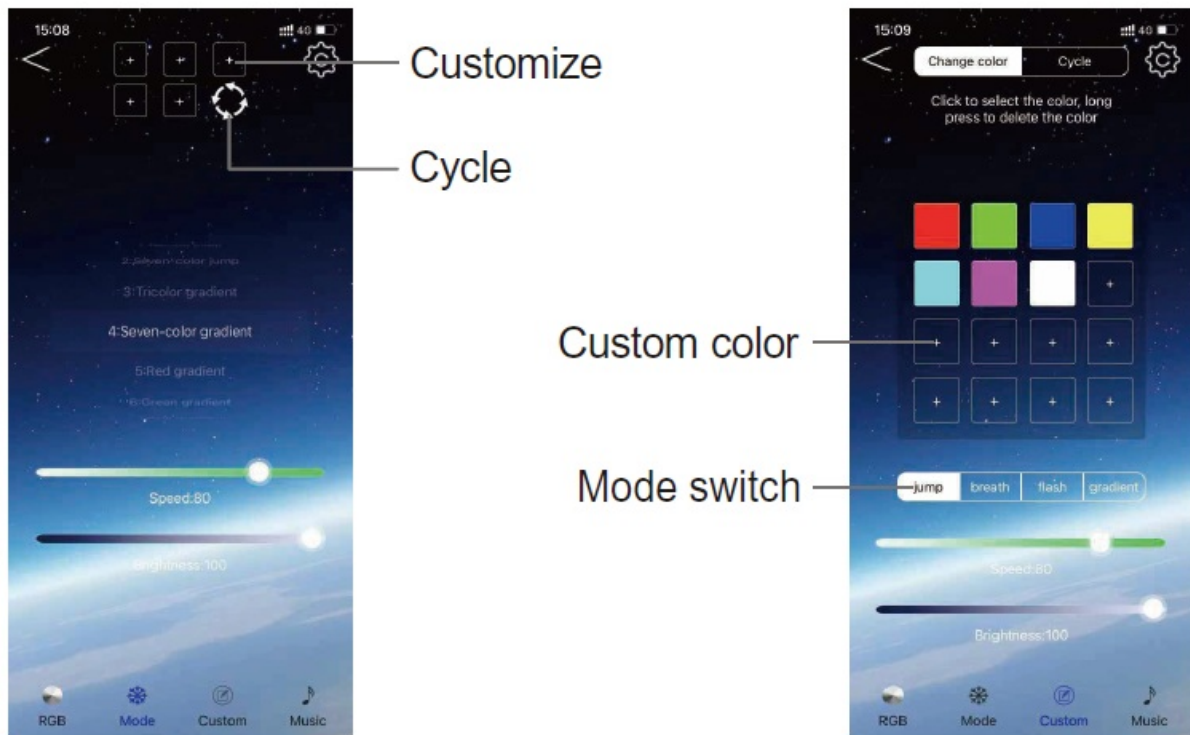
On the home page, manually pull down to refresh, the APP will automatically search for nearby devices, and click the “LED BLE 00-XXXX” device to enter the lighting control interface




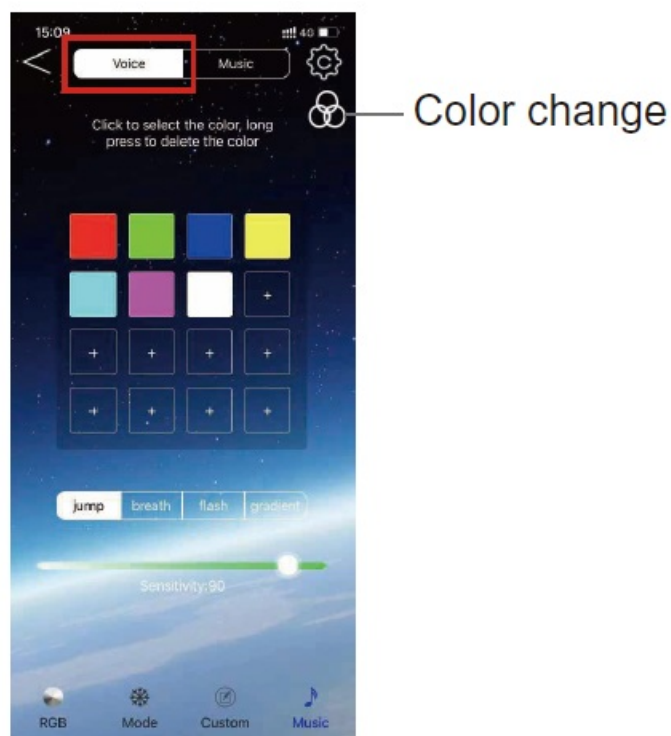
1.  ... Color: color circle and single color. You can adjust the color at will, customize the color, and adjust the brightness of the white light by dragging the ring.



2.  Mode: Select one of the modes to add a custom mode.
3.  Custom: You can customize the color, and then select the mode



4.  Music: There are voice control and music, and the voice control can set the color, mode, sensitivity, and change the effect of the light. Music can be changed by playing songs on the phone.



FCC Statement

FCC Caution: Any changes or modifications not expressly approved by the party responsible for compliance could void the user's authority to operate this device.

This device complies with Part 15 of the FCC Rules. Operation is subject to the following two conditions:

1. This device may not cause harmful interference, and

2. this device must accept any interference received, including interference that may cause undesired operation.

Note: This device has been tested and found to comply with the limits for a Class B digital


I device, according to part 15 of the FCC Rules. These limits are designed to provide reasonable protection against harmful interference in a residential installation. This device generates, uses, and can radiate radio frequency energy and, if not installed and used following the instructions, may cause harmful interference to radio communications. However, there is no guarantee that interference will not occur in a particular installation. If this device does cause harmful interference to radio or television reception, which can be determined by turning the device off and on, the user is encouraged to try to correct the interference by one or more of the following measures:

- Reorient or relocate the receiving antenna.
- Increase the separation between the device and receiver.
- Connect the device to an outlet on a circuit different from that to which the receiver is connected.
- Consult the dealer or an experienced radio/TV technician for help.

Radiation Exposure Statement

This device complies with FCC radiation exposure limits set forth for an uncontrolled environment. This device should be installed and operated with a minimum distance of 20cm between the radiator and your body.

Documents / Resources

	NINGBO VLH26 LED Bluetooth Controller [pdf] User Manual 2BLM4-VLH26, 2BLM4VLH26, VLH26 LED Bluetooth Controller, VLH26, LED Bluetooth Controller, Bluetooth Controller, Controller
---	---

References

- [User Manual](#)

[Manuals+](#), [Privacy Policy](#)

This website is an independent publication and is neither affiliated with nor endorsed by any of the trademark owners. The "Bluetooth®" word mark and logos are registered trademarks owned by Bluetooth SIG, Inc. The "Wi-Fi®" word mark and logos are registered trademarks owned by the Wi-Fi Alliance. Any use of these marks on this website does not imply any affiliation with or endorsement.