



Ningbo Litesun Electronics LTS Smart App User Manual

[Home](#) » [Ningbo Litesun Electronics](#) » Ningbo Litesun Electronics LTS Smart App User Manual

Contents [[hide](#)]

- 1 Ningbo Litesun Electronics LTS Smart App
- 2 Download and Install APP
- 3 Register/Login/Forgot password
- 4 Add device-Normal mode
- 5 Add device-Enter Wi-Fi password
- 6 Add device-Network connection process
- 7 Add device-Adding failed
- 8 Control device
- 9 Smart life scenario
- 10 Profile
- 11 Profile-Pattern Unlock
- 12 Profile-Device Sharing
- 13 FCC RULES
- 14 Documents / Resources
- 15 Related Posts



Ningbo Litesun Electronics LTS Smart App



Download and Install APP



Use your phone to scan the QR code below or search “LTS Smart” in the application market to download and install the App

Register/Login/Forgot password

Register

If you don't have an App account, register an account or sign in with verification code by SMS. This page describes the registration process.

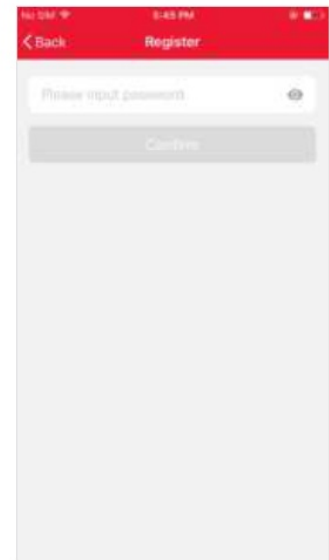
1. Tap to enter registration page
2. The system automatically recognises your country/area. You can also select your country code. Enter the mobile number/E-mail and tap “Next” , as shown in the picture 2
3. If you enter the mobile number, then enter the verification code in the message, as shown in picture 2, and enter the password tap”Confirm” to finish your registration.
4. If you enter the E-mail enter the password as shown in picture 4 and tap”Confirm” to finish your registration.



Picture 1

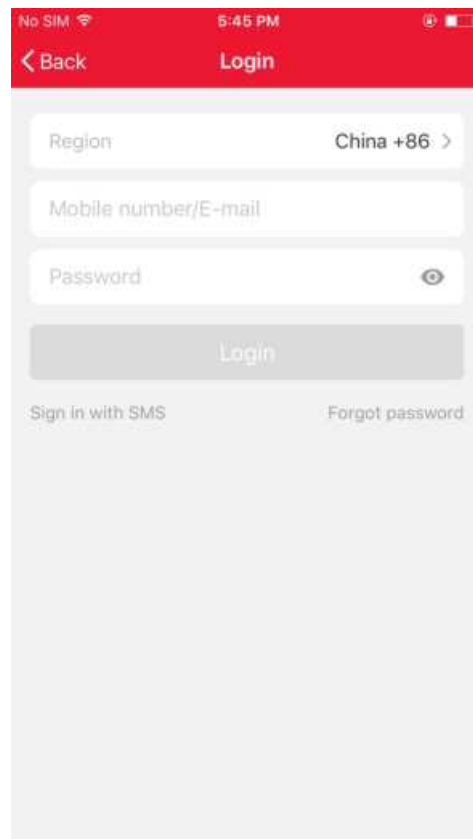


Picture 2



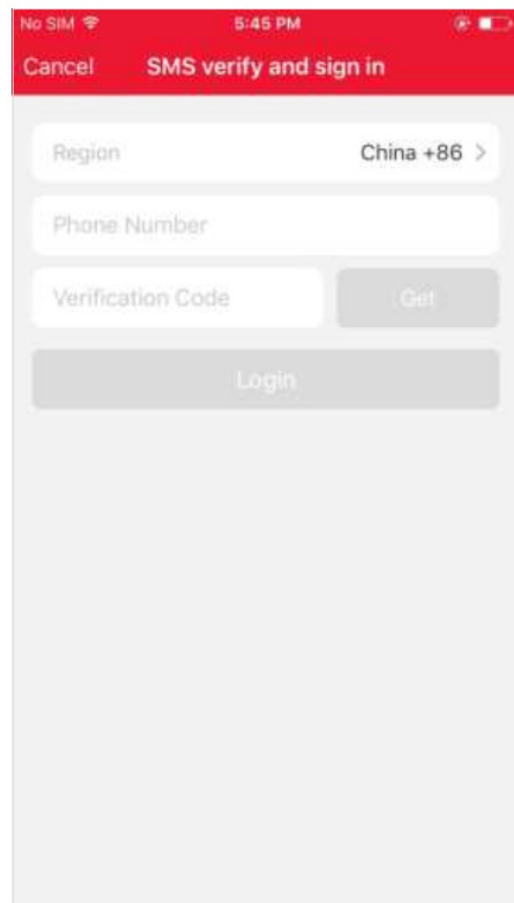
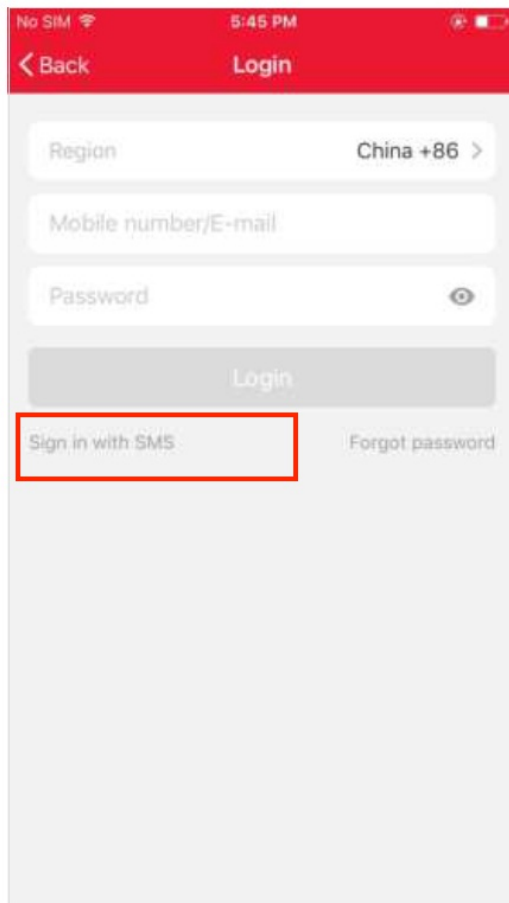
Picture 3

Sign in with username and password



1. The system automatically recognizes your country /area. You can also select your country code. Enter the mobile number/E-mail and tap "Next"
2. Enter your registered mobile number or Email, and password to login.

Sign in with verification code via SMS

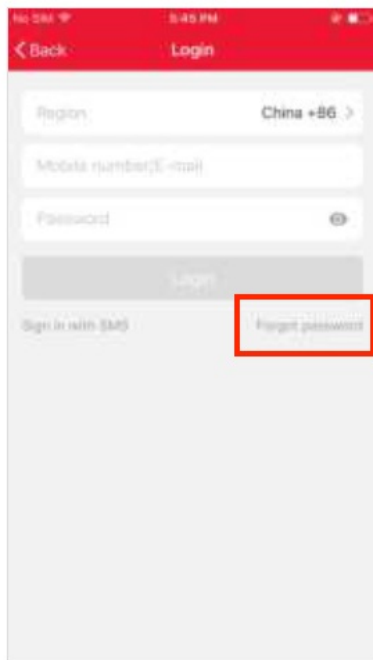


1. Tap "Sign in with SMS verification" to new page
2. The system automatically recognises your country / area. You can also select your country code by yourself.
3. Enter the mobile number and tap "Get" to get a message
4. Enter the verification code in the message and tap "Login" to login the App

Forgot password

To find your password back, please follow the procedures:

1. Tap "Forgot password" as shown in the picture 1
2. The system automatically recognises your country / area. You can also select your country code by yourself. Enter the mobile number/E-mail and tap "Next", as shown in the picture 2
3. Enter the verification code in the message/E-mail, as shown in the picture 3 and enter the new password tap "Confirm" to finish.



Picture 1

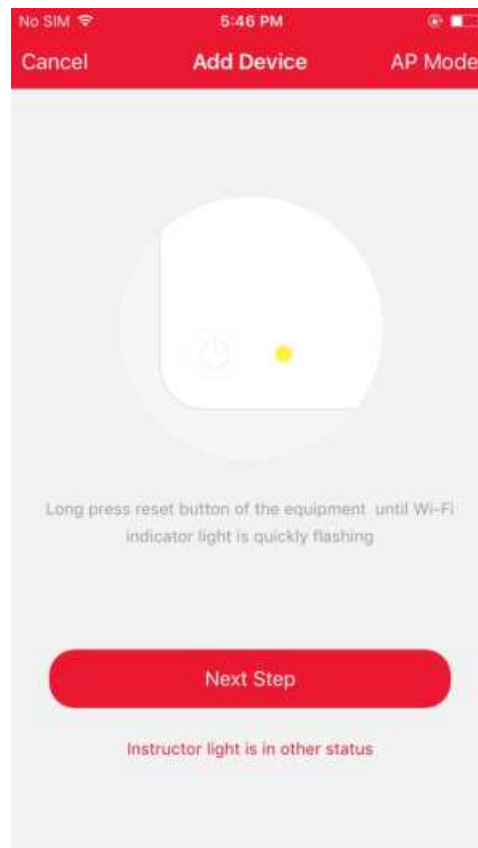


Picture 2



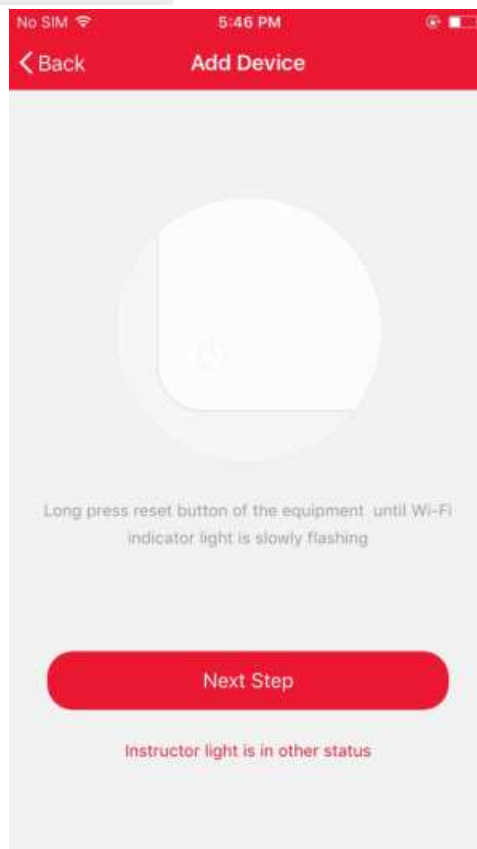
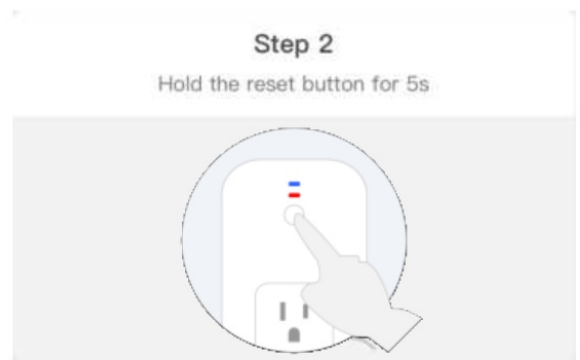
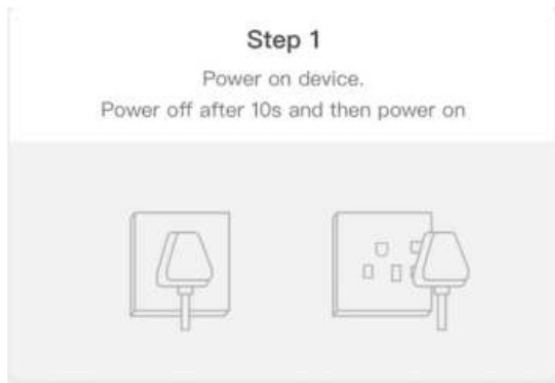
Picture 3

Add device-Normal mode



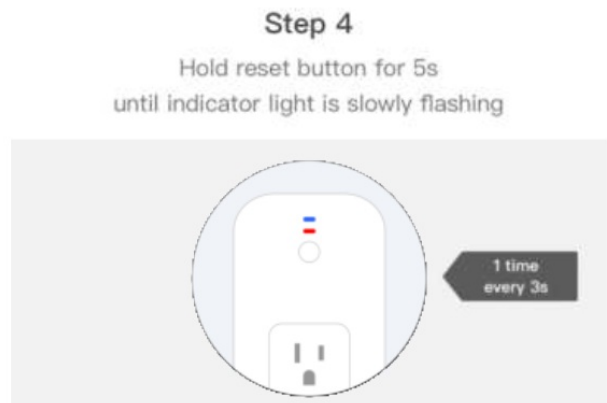
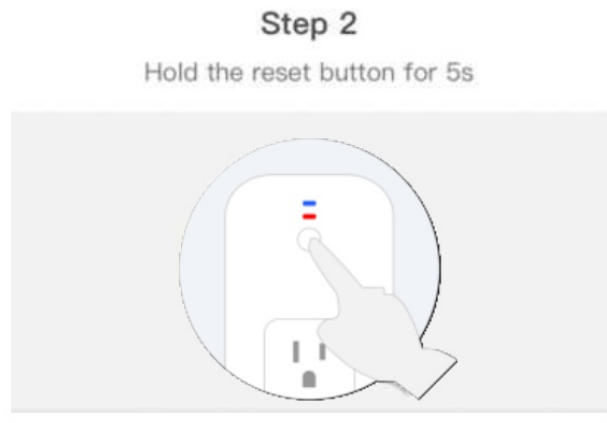
1. Enter the App, tap "+" in the upper right of the page to enter network connection page as shown in the picture
2. There are two network connection methods (Normal mode and AP mode). Normal mode is default. Users could tap the upper right corner to switch the connection method to AP mode.
3. For normal mode, please make sure the light rapidly flashes (2 times per second), tap to go on to the next step
4. If light is not rapidly flashing, tap "how to set light as rapid flashes" to view operation processes.

Notes: How to set light as rapid flashing

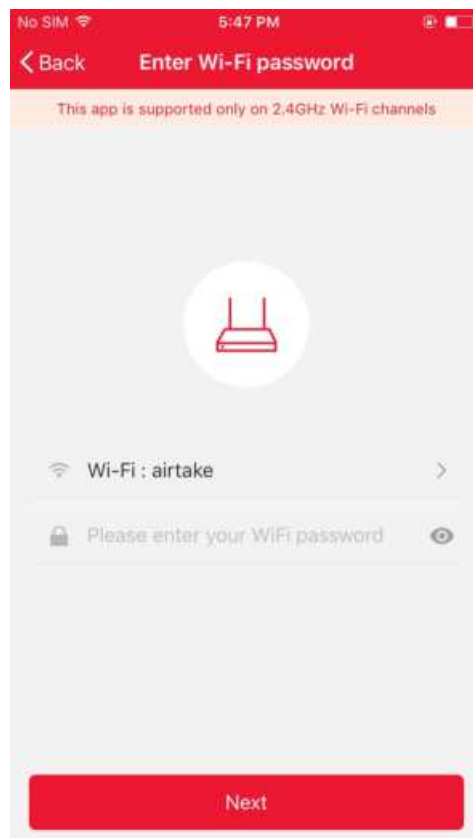


1. For AP mode, please make sure the device's indicator light slowly flashes(1 time every 3 seconds),tap to go on to the next step
2. If light is slowly flashing, tap "how to set light as slow flashes" to view operation processes.

Notes: How to set light as slow flashing



Add device-Enter Wi-Fi password

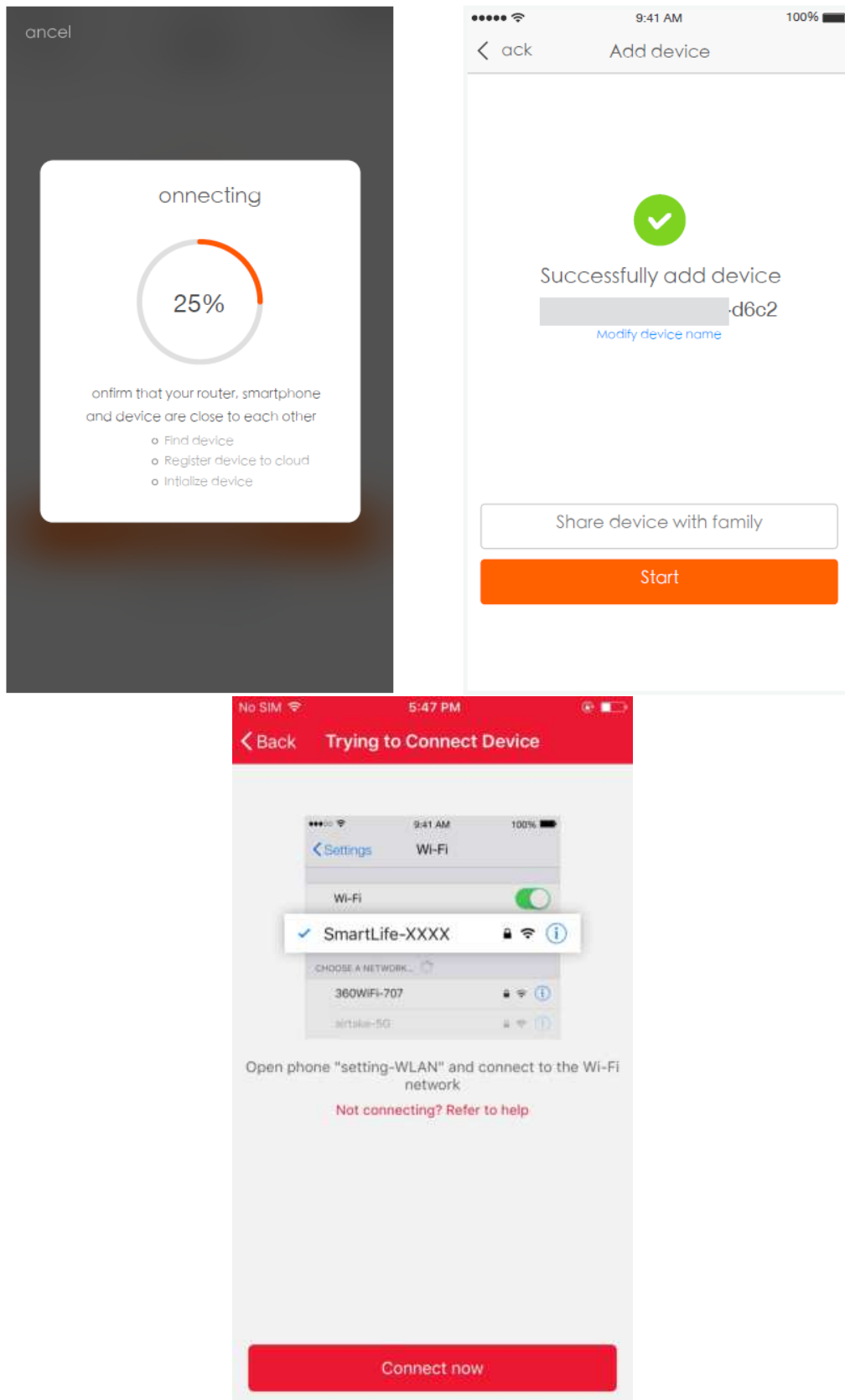


Select the Wi-Fi under which device is working, enter password and tap “Confirm” to enter network connection process, as shown in the picture below

Add device-Network connection process

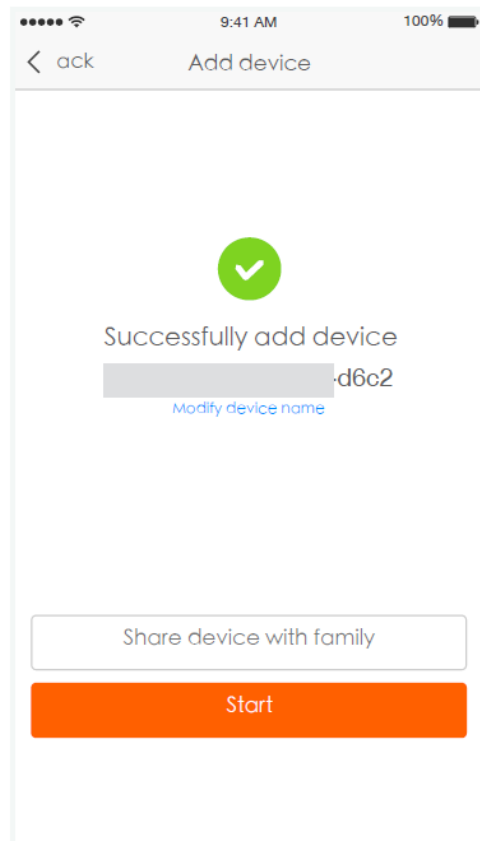
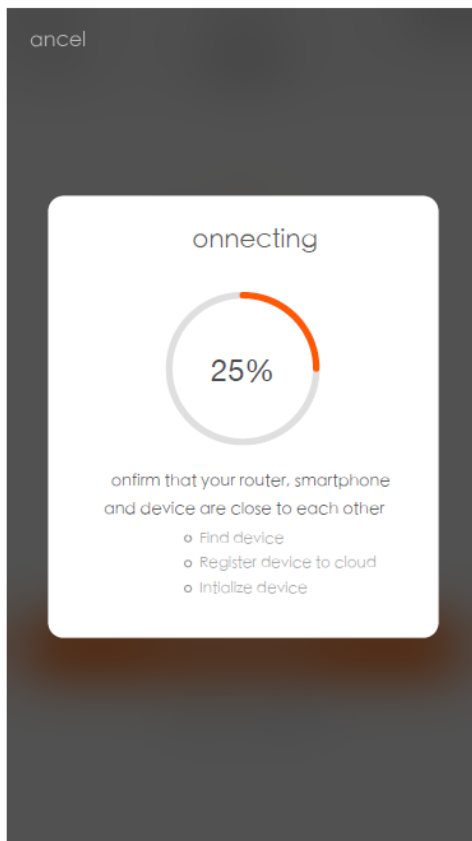
If you select normal mode to connect device to the network, the App goes through the processes as shown in the

picture 1. After the network connection is successfully, the App page will be shown in picture 2



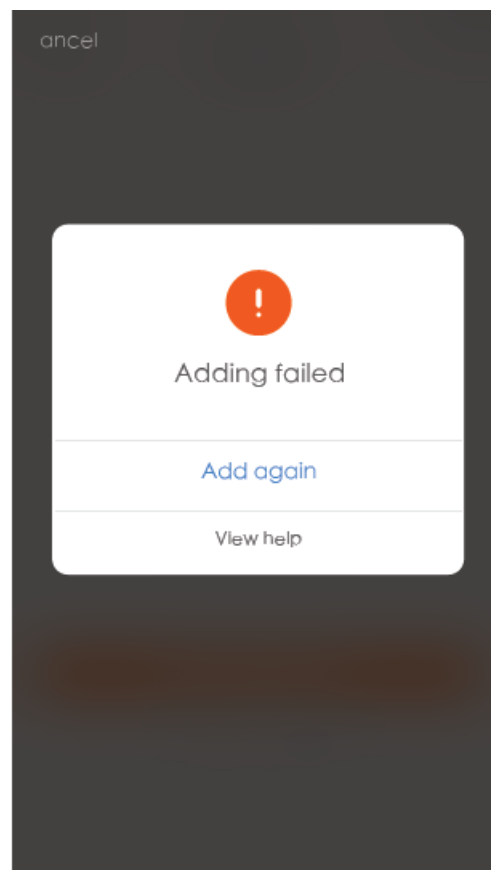
For AP mode connect to the Wi-Fi hotspot named "SmartLife", as shown in picture 2

Notes: Some devices might have different hotspot names.



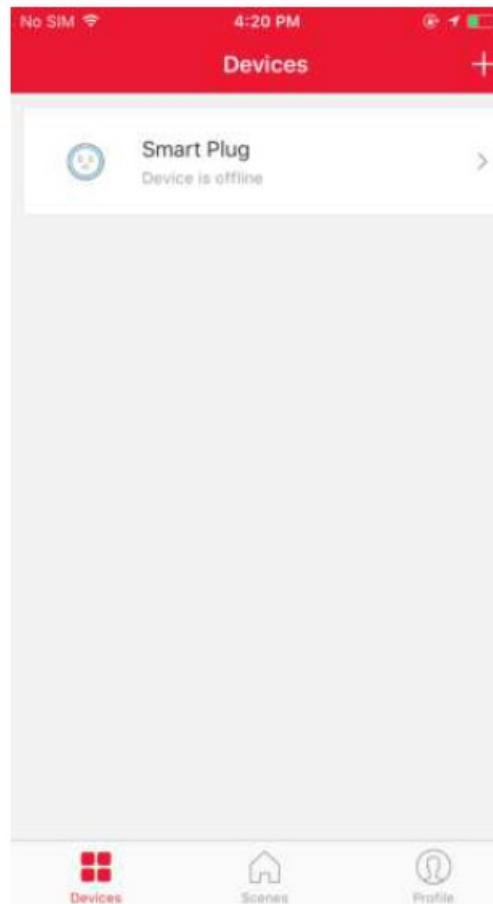
After connecting with the hotspot, back to the network connection page to enter network connection process. The App goes through as shown in the picture 1. Picture 2 shows the App page when the network connection is successful.

Add device-Adding failed



If your App interface is shown as in the picture, it means that the network connection failed. You could try by connecting again or view help.

Control device

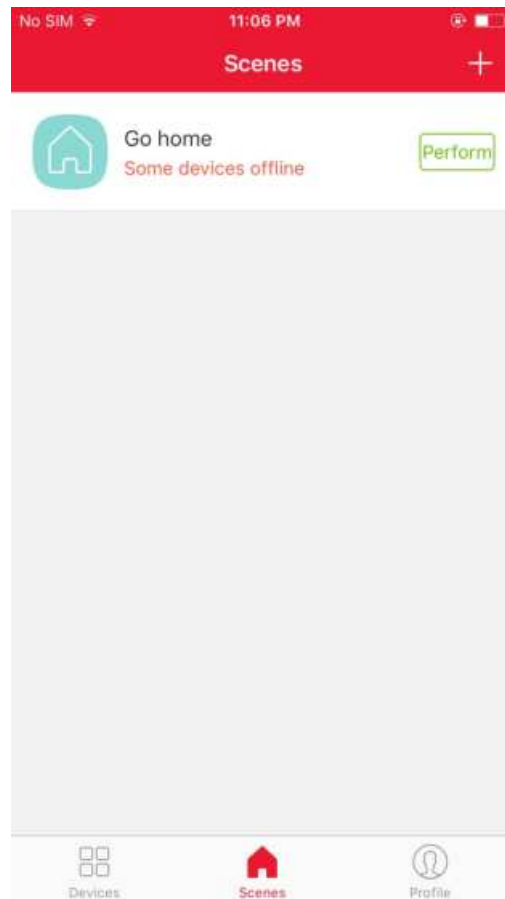


After successfully configuring the devices, the smart device will be shown on the home page. Tap to enter its control page

Note:

1. When device is online, it support short-cut operations
2. When device is offline, it displays “Offline” and can be controlled.

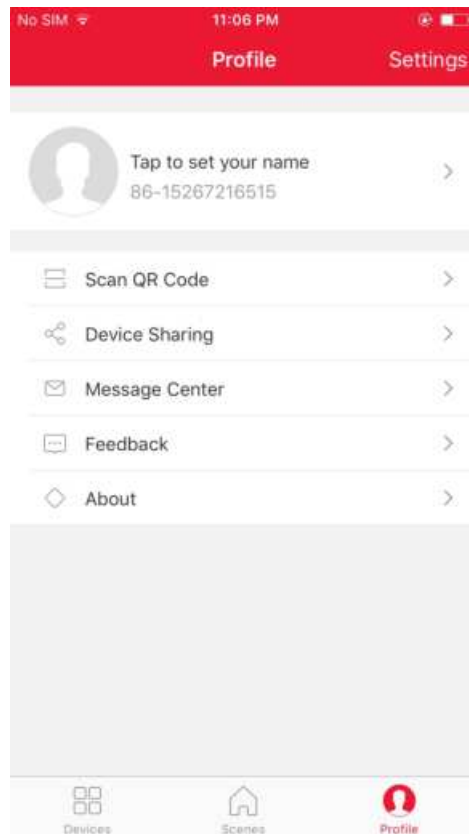
Smart life scenario



Smart life scenario supports that devices perform corresponding actions under various conditions. The main conditions include:

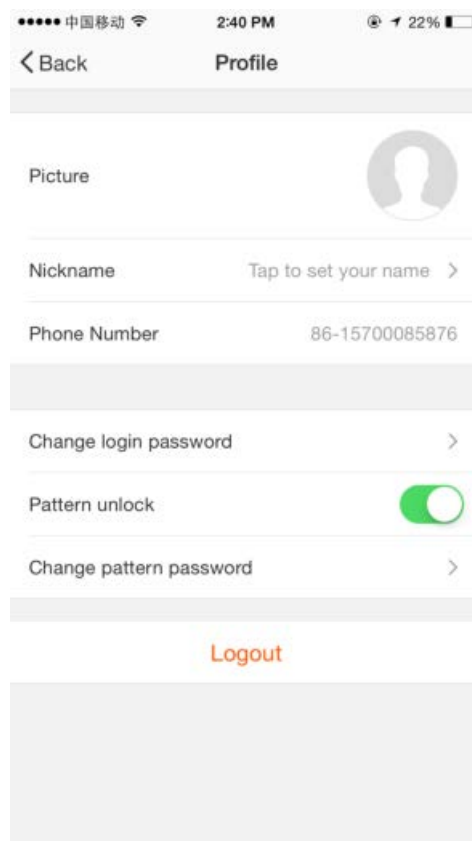
1. Temperature
2. Humidity
3. Weather
4. PM2.5
5. Air quality
6. Sunrise & sunset time
7. Device's actions (such as turn on/ff)

Profile



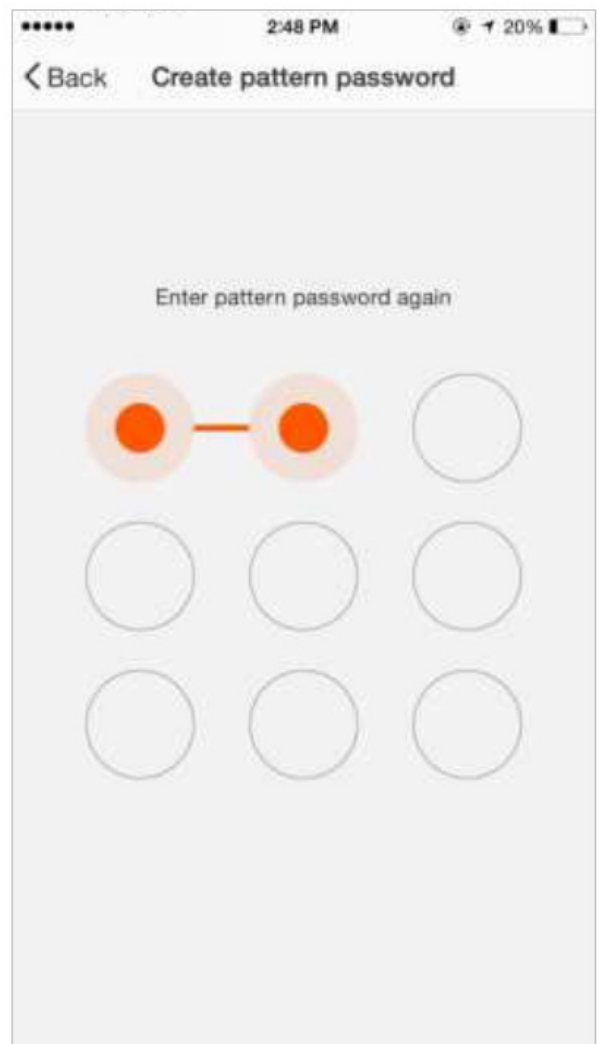
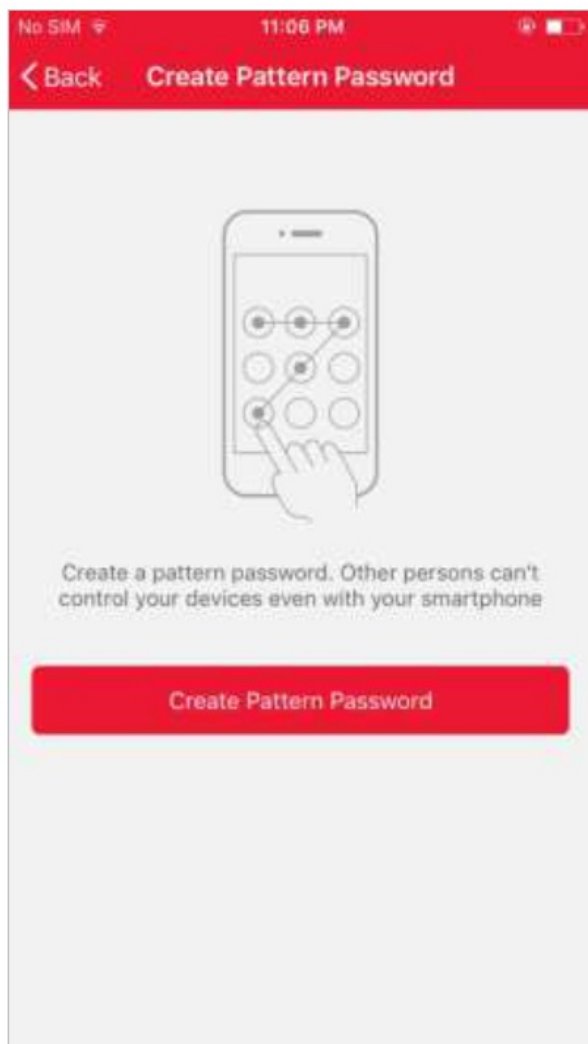
“Profile” page is where users could manage personal information. The key information is as follows:

1. Personal information
2. Device Sharing display the information of shared devices
3. Message center
4. Entry to submit feedback
5. About



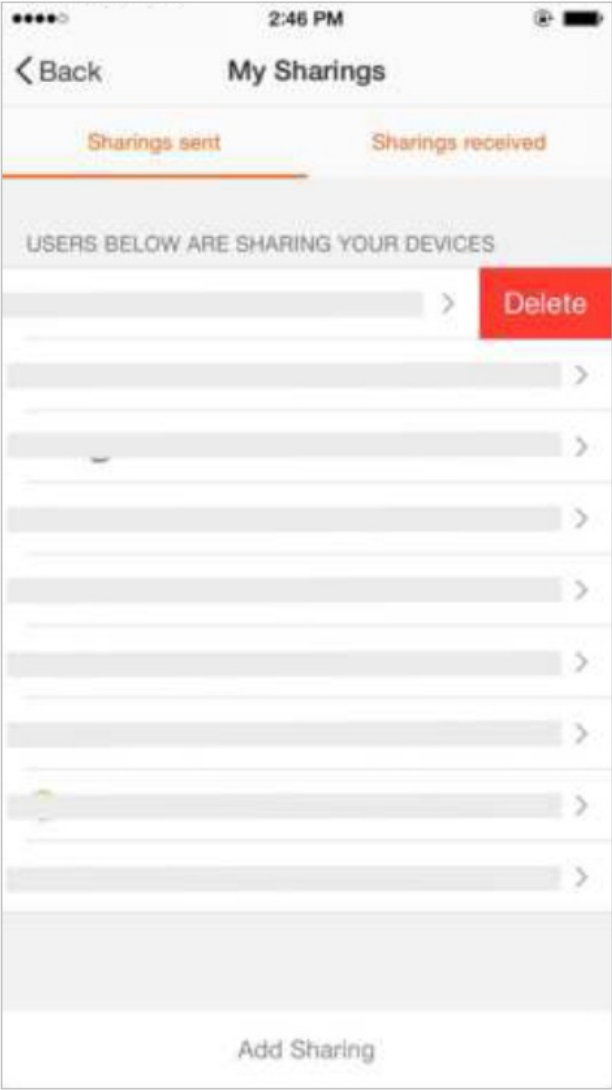
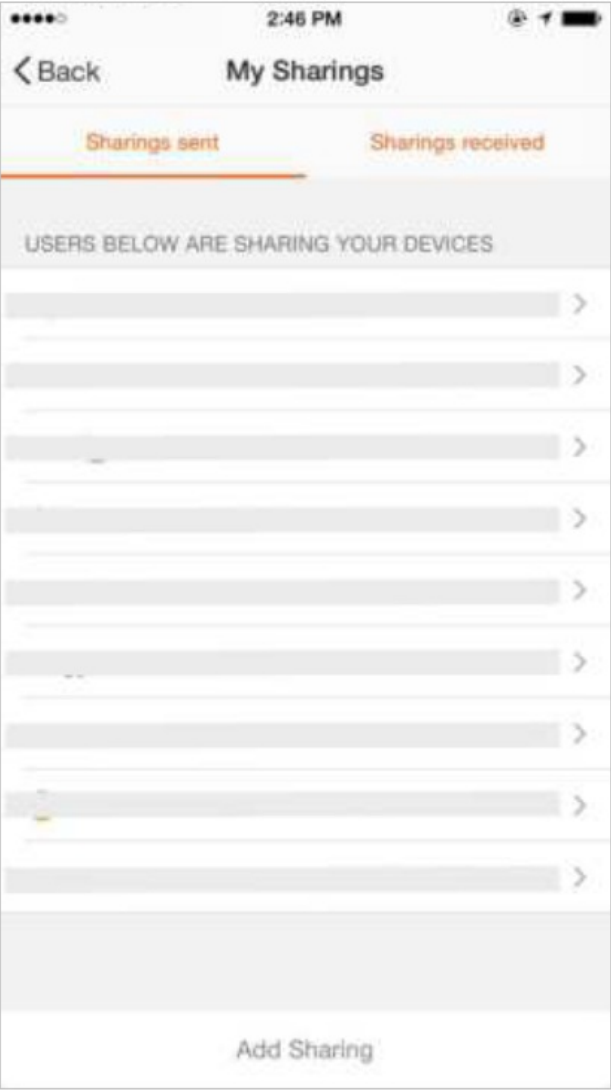
“Profile” page is for displaying personal account information. You can change login password, binding mobile number, set pattern unlock on this page.

Tap “Pattern unlock” to set your pattern. After setup, you have to enter your pattern to use the App



Profile-Pattern Unlock

Send sharing: The list shows all members who are added by your account. You can delete the member and delete the sharing by swiping left. Receive sharing: The list shows all devices that your account has received. You can delete the sharing by swiping left.



Profile-Device Sharing

No SIM 11:11 PM

< Back Add Sharing

Add new member to use smart device

Region China +86 >

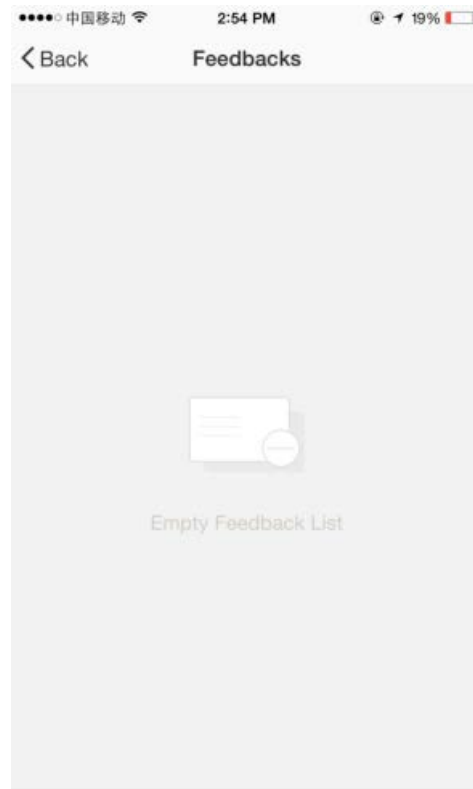
Enter mobile number/E-mail

Confirm

Add sharing: As shown in the picture, users could input a new member's mobile number and share the device with him. The new member could then control the shared device.

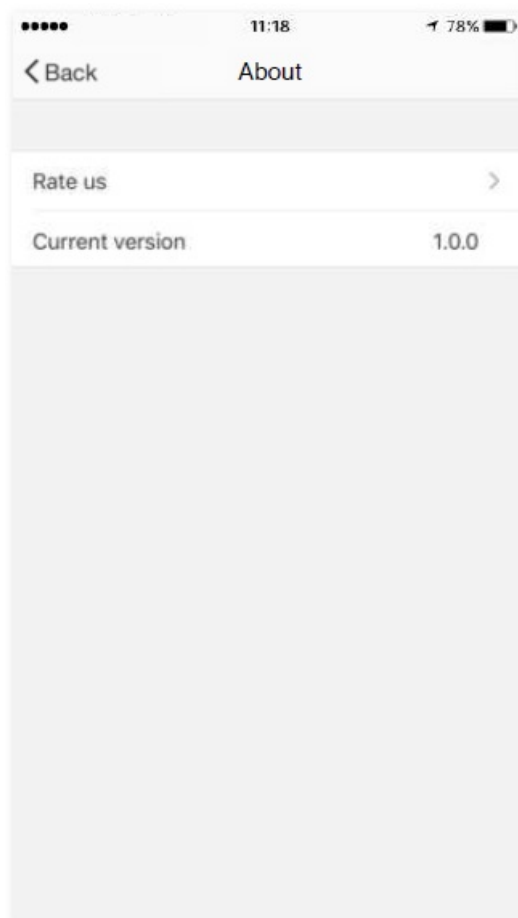


Message centre: Including notifications of new device and new sharing



New Feedback

Feedback: Entry where users could submit their feedback



App's other related information include:

1. Tap on "rate us", App will be redirected to a corresponding App market, where you could rate us
2. Show App version number

FCC RULES

This device complies with Part 15 of the FCC Rules / Industry Canada licence-exempt RSS standard(s).

Operation is subject to the following two conditions: (1) this device may not cause harmful interference, and (2) this device must accept any interference received, including interference that may cause undesired operation. Changes or modifications not expressly approved by the party responsible for compliance could void the user's authority to operate the equipment.

This equipment has been tested and found to comply with the limits for a Class B digital device, pursuant to part 15 of the FCC Rules. These limits are designed to provide reasonable protection against harmful interference in a residential installation. This equipment generates uses and can radiate radio frequency energy and, if not installed and used in accordance with the instructions, may cause harmful interference to radio communications. However, there is no guarantee that interference will not occur in a particular installation. If this equipment does cause harmful interference to radio or television reception, which can be determined by turning the equipment off and on, the user is encouraged to try to correct the interference by one or more of the following measures:

- Reorient or relocate the receiving antenna.
- Increase the separation between the equipment and receiver.
- Connect the equipment into an outlet on a circuit different from that to which the receiver is connected.
- Consult the dealer or an experienced radio/TV technician for help.

MPE Requirements

To satisfy FCC / IC RF exposure requirements, a separation distance of 20 cm or more should be maintained between the antenna of this device and persons during device operation. To ensure compliance, operations at closer than this distance is not recommended. Region Selection Limited by local law regulations, the version for North America does not have a region selection option.

Thank You

Remark

1. The pictures used in this manual are iOS app interface, the Android version is a bit different.
2. Product and software update periodically, the number and app interface in this manual are only for example.
No extra notification on further changes.

ISED RSS Warning/ISED RF Exposure Statement

ISED RSS Warning: This device complies with Innovation, Science and Economic Development Canada licence-exempt RSS standard(s). Operation is subject to the following two conditions:

1. this device may not cause interference, and
2. this device must accept any interference, including interference that may cause undesired operation of the device.

ISED RF exposure statement:

This equipment complies with ISED radiation exposure limits set forth for an uncontrolled environment. This equipment should be installed and operated with a minimum distance 20cm between the radiator& your body. This transmitter must not be co-located or operating in conjunction with any other antenna or transmitter.

Documents / Resources

LA-9A-12 USER MANUAL



[Ningbo Litesun Electronics LTS Smart App](#) [pdf] User Manual

WIFI-013, WIFI013, 2AMQ8-WIFI-013, 2AMQ8WIFI013, LTS Smart App, App