



## nince ARC Reverse Camera User Manual

[Home](#) » [nince](#) » nince ARC Reverse Camera User Manual 

nince ARC Reverse Camera

## Contents

### 1 TAYYEB POST

- 1.1 SAFETY INFORMATION
- 1.2 INTRODUCTION
- 1.3 INTENDED USE
- 1.4 THE PACKAGE
- 1.5 TECHNICAL DATA
- 1.6 Dimensions
- 1.7 MONITOR PARTS
- 1.8 INSTALLATION
- 1.9 THE MENU OF THE MONITOR
- 1.10 SAFETY INSTRUCTIONS
- 1.11 CLEANING
- 1.12 MAINTENANCE & SERVICE
- 1.13 STORAGE & TRANSPORT
- 1.14 DISPOSAL & RECYCLING
- 1.15 WARRANTY & LIABILITY
- 1.16 ENSURE SATISFACTION
- 1.17 CUSTOMER SUPPORT
- 1.18 Documents / Resources
  - 1.18.1 References
- 1.19 Related Posts

---

# TAYYEB POST



## SAFETY INFORMATION



This user manual accompanies the **Nince** reversing camera and contains important information about safety, use and disposal. Read the manual carefully and follow the instructions and warnings to ensure your own safety and the safety of others.

Keep the manual for further reference, even if you are familiar with the product. Make sure to include this manual when passing on this product to third parties.

The images in the manual are for illustrative purposes only and may differ slightly from the product. In that case, **Nince** is not obliged to adjust the manual. Use the actual product as a reference.

## INTRODUCTION

Thank you for choosing a **Nince** product. Read the user manual carefully before use, to ensure proper and safe use of the produce Our product complies with the following statutory national and European requirements: ct. Always follow the instructions to prevent damage or harm.

Our product complies with the following statutory national and European requirements:

**CE** **RoHS** **FC**

✓ **CE Mark:** The CE mark (an acronym for the French “conformité européenne”) certifies that a product meets EU health, safety, and environmental requirements, guaranteeing consumer safety.

✓ **Compliant with RoHS:** The Restriction of Hazardous Substances (RoHS) directive 2015/863/EU is an EU directive to restrict the use of certain hazardous substances in electrical and electronic equipment. Each EU Member State must adopt its law to implement this directive. If a product is RoHS certified, this confirms that the proportion of hazardous or difficult-to remove substances is limited to the maximum allowed.

✓ **FCC Certificate:** FCC (Federal Communications Commission) is the government agency that coordinates the activity of radio waves in broadcasting and communication. The FCC mark confirms that this device is compatible with the US market.

If you have any questions, remarks, or problems using the product please contact us by e-mail:

[jordynair@gmail.com](mailto:jordynair@gmail.com).

**We hope you enjoy your purchase!**

## INTENDED USE

The intended use of the **Nince** reversing camera is to assist drivers in reversing a vehicle safely. The camera is mounted at the rear of the vehicle, and its main purpose is to improve rear visibility and reduce blind spots when maneuvering. It is a valuable vehicle safety feature, especially for larger vehicles such as trucks, vans, and SUVs, where rear visibility is often more limited. There are no other uses for this product.



Only use this product as described in this user manual. Any other use is considered improper and may result in personal injury or material damage. **Nince** is not liable for damage or injury resulting from improper or careless use.

## THE PACKAGE

### Contents

**The following components are included in the scope of delivery:**

1. 1x monitor
2. 1x camera
3. 1x monitor holder
4. 1x antenna
5. 2x clip
6. 1x 12V cigarette lighter adapter cable
7. 1x DC power cable
8. 1x capacitor filter cable
9. 1x voltage regulator cable
10. 2x strap
11. 2x tape
12. 1x user manual

### Unpacking

Remove everything from the packaging and check for damage. If this is the case, do not use the reversing camera. Be very careful when opening the package to avoid damage to the product. After unpacking the product, check if the delivery is complete and if all parts are in good condition. If you are missing a part, or if you have a damaged part, contact us by e-mail: [jordynair@gmail.com](mailto:jordynair@gmail.com).

Before use, remove all packaging materials, the anti-scratch film, and stickers or labels.

## Safety During Unpacking

Do not leave packaging material or accessories lying around carelessly during unpacking. It may become dangerous playing material for children. Do not dispose of the packaging material until the reversing camera has been tried and is working.



**WARNING:** Plastic bags & foils.

To avoid the danger of suffocation, keep plastic bags and foils away from babies and children! Thin foils may cling to the nose and mouth and prevent breathing.



**WARNING:** Small parts.

Contains small parts not, for children under 3 years or any individuals who tend to place inedible objects in their mouths.

Small parts can be swallowed or lodged in the windpipe and create a choking hazard. As a general guide, a choking hazard is anything with small parts that are less than 31mm in diameter and 57mm long.



**WARNING:** Strangulation Hazard.

Cables, cords, or strings longer than 18 cm (7 inches) can be harmful to babies and very young children. Children may get entangled while playing with the cables. Do not leave the cables lying around.



## TECHNICAL DATA



**NOTE:**

Due to continuing improvements on our product, the technical specifications are subject to change without notice.

General data	
Product name	Reversing camera
Type	ARC1
Brand	Nince
Color	Black
Weight	124g
Certifications	CE, RoHS, FCC
Monitor	

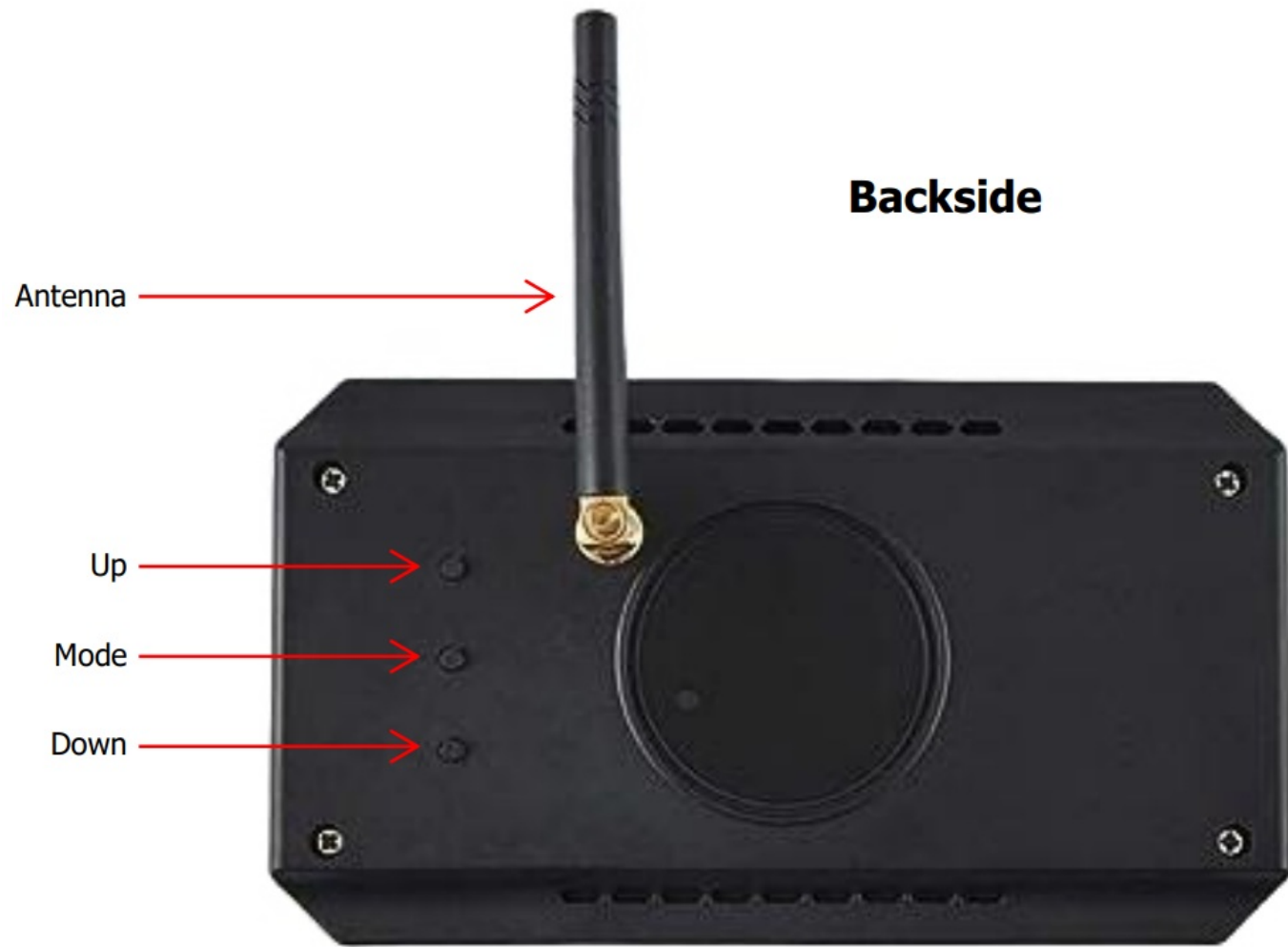
<b>Display size</b>	5 inch
<b>Buttons</b>	Mode, Up, Down
<b>Display type</b>	Color TFT LCD
<b>Resolution</b>	800 x 480 RGB (W x H)
<b>Voltage</b>	9-28V DC
<b>Channels</b>	2
<b>Parking guidelines</b>	5 options can be set via the menu
<b>Transmission distance</b>	100 meters in a free space
<b>Short latency time</b>	<200ms
<b>Mounting method</b>	Suction cup
<b>Min/max temperature</b>	-10°C ~ +60°C
<b>Dimensions</b>	14.86 x 8.17cm (W x H)
<b>Camera</b>	
<b>Image sensor</b>	¼ inch color CMOS
<b>Resolution</b>	720P
<b>Viewing angle</b>	140° Widescreen
<b>Maximum illumination</b>	0.1lux highly sensitive
<b>Voltage</b>	9-28V DC
<b>Camera current</b>	Max 150mAh
<b>Material</b>	Aluminum magnesium
<b>Waterproof grade</b>	IP67
<b>Mounting method</b>	3M double-sided tape
<b>Min/max temperature</b>	-10°C ~ +60°C

<b>Dimensions</b>	4.9 x 2.5cm (W x H)
-------------------	---------------------

### Dimensions



### MONITOR PARTS



### INSTALLATION

#### Guidelines & Warnings

1. Read the instructions before use.
2. Check all local, state, and federal laws regarding in-vehicle video monitors before installing your monitor. Many

- countries have specific laws regarding the position of a monitor in a vehicle. For safety reasons, do not install the device in a position where the driver can be distracted by the image or operate the controls while driving.
3. This device and other wireless devices may be subject to interference. Interference may be caused by mobile phones, Bluetooth headsets, Wi-Fi routers, power cables, and other electrical equipment.
  4. The reversing camera system is compatible with a wide variety of vehicles and video monitors. This kit contains the necessary wiring accessories and cable connectors sufficient for typical connections. However, additional accessory cables and installation materials may be required for the full safe and operational performance.

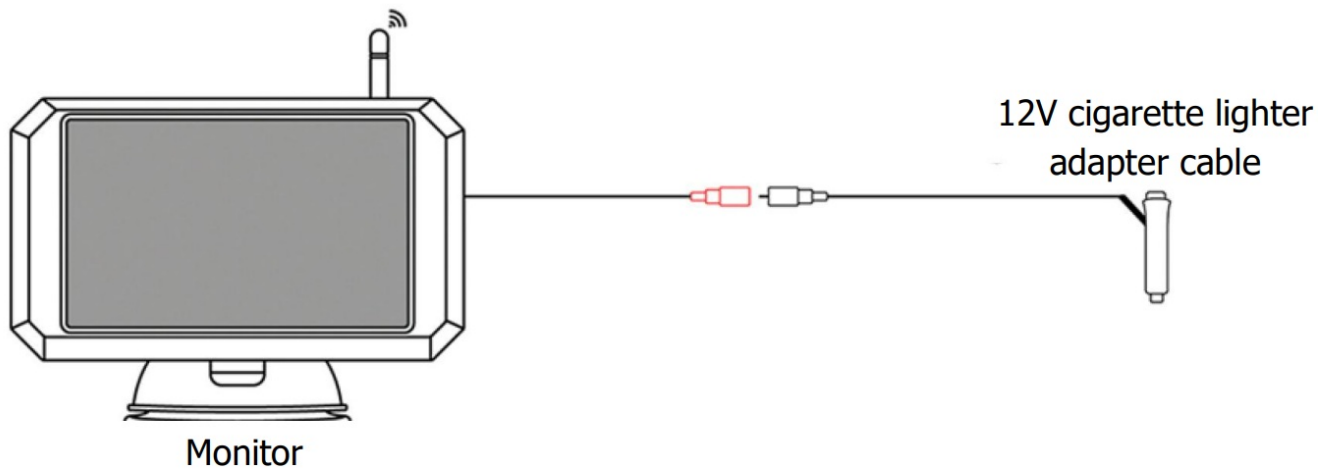
### **Camera – Wiring & Mounting**

1. The camera is easy to mount in the desired location using the supplied 3M tape. Clean the surface thoroughly before sticking it on the vehicle. Press the camera firmly and the installation is successful.
2. Chose the routing path for the camera's power cable to the power source. When installing the camera, you may need to temporarily remove an inner panel or other cover.
3. Some vehicles may have a hole available to route the wire through such as where the license plate lights are mounted. Or you can drill a hole close to where the power cable is connected to the camera. If you are using an existing opening, skip steps 4 and 5.
4. Before drilling the hole, make sure there are no components behind the surface you are drilling such as electrical cables or other important components that can be damaged.
5. After drilling the hole, route the camera cable into the opening.
6. Locate the power source required. Once you have located the power source, route the camera cables to that location. Never route the cables on the outside of the vehicle.
7. Connect the camera power cable with the capacitor filter cable. There are small notches on the connectors to align.
8. Connect the capacitor filter cable with the voltage regulator cable.
9. Connect the voltage regulator cable with the DC power cable.
10. The DC power cable must be spliced into the vehicle wire. Connect the red positive (+) wire from the camera and connect it to the positive (+) wire from the reverse lights. Connect the black negative (-) wire to the negative (-) wire of the reverse lights.
11. Make sure the battery's negative terminal is disconnected. After determining the positive and negative wires, splice the wires using quick connectors (not included).
12. When finished, reconnect the negative terminal to the battery.

### **Monitor – Wiring & Mounting**

1. Make sure the monitor is mounted in a location that will not obstruct your vision while driving.
2. Before mounting the monitor, clean the mounting surface well.
3. Position the suction cup to a smooth surface that suits your needs.
4. Adjust the position of the monitor to suit your viewing angle.
5. Connect the monitor to the supplied 12V cigarette lighter adapter cable.





### **Linking (Pairing) the Monitor and Camera**

**The monitor and camera(s) are already linked upon receipt. You can reconfigure the cameras if the signal is interrupted or if you connect a new camera. If the signal is good, do nothing. If there is no signal, do the following steps:**

1. Disconnect the camera power first. On the monitor, you will see that there is “no signal”.
2. On the default screen of the monitor, click the “+” button to switch to the camera channel that you are going to pair. The camera channel is visible on the top of the screen.
3. Click the “M” button to switch to the PAIR mode.
4. Click the “+” button to enter the PAIR mode. The PAIR icon is visible on the screen.
5. The pairing starts and you can see on the screen that there are no signals. Connect now the camera with the power. After a while, the camera image comes visible on the screen. The pairing was successful and the product is ready for use.

## **THE MENU OF THE MONITOR**

### **Menu Icons**



Brightness adjustment



Color adjustment



Contrast ratio adjustment

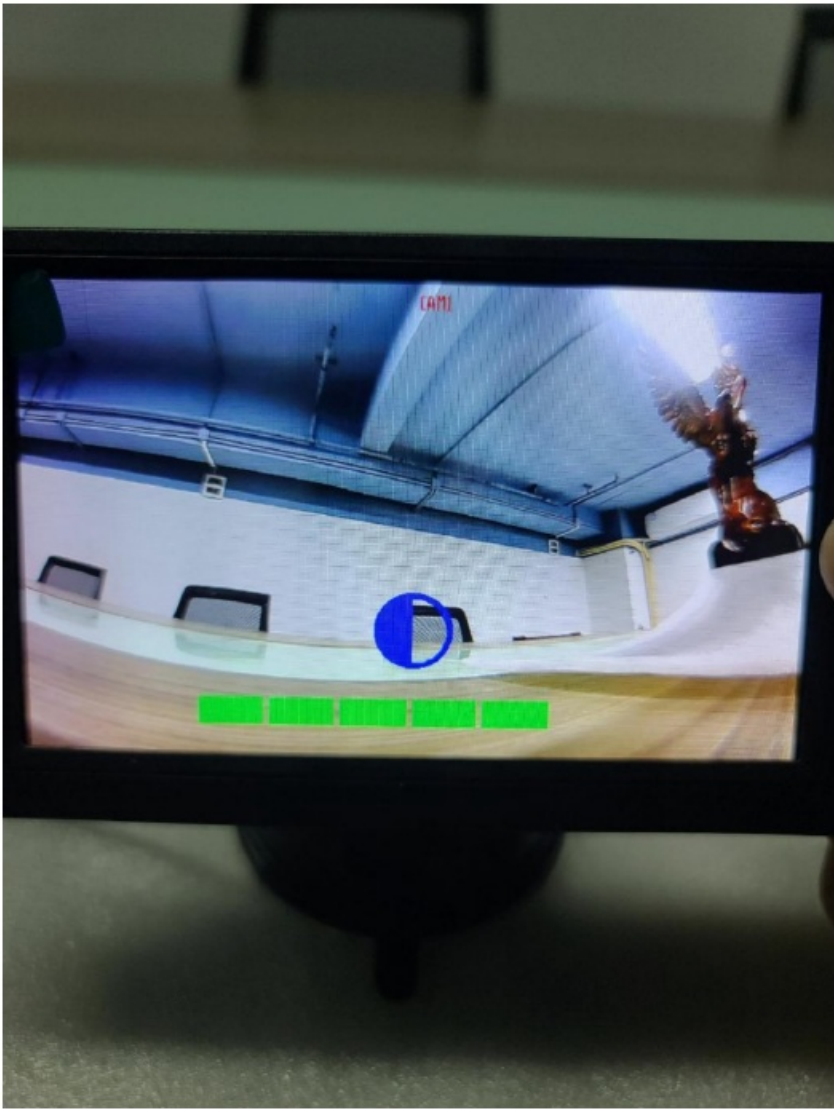
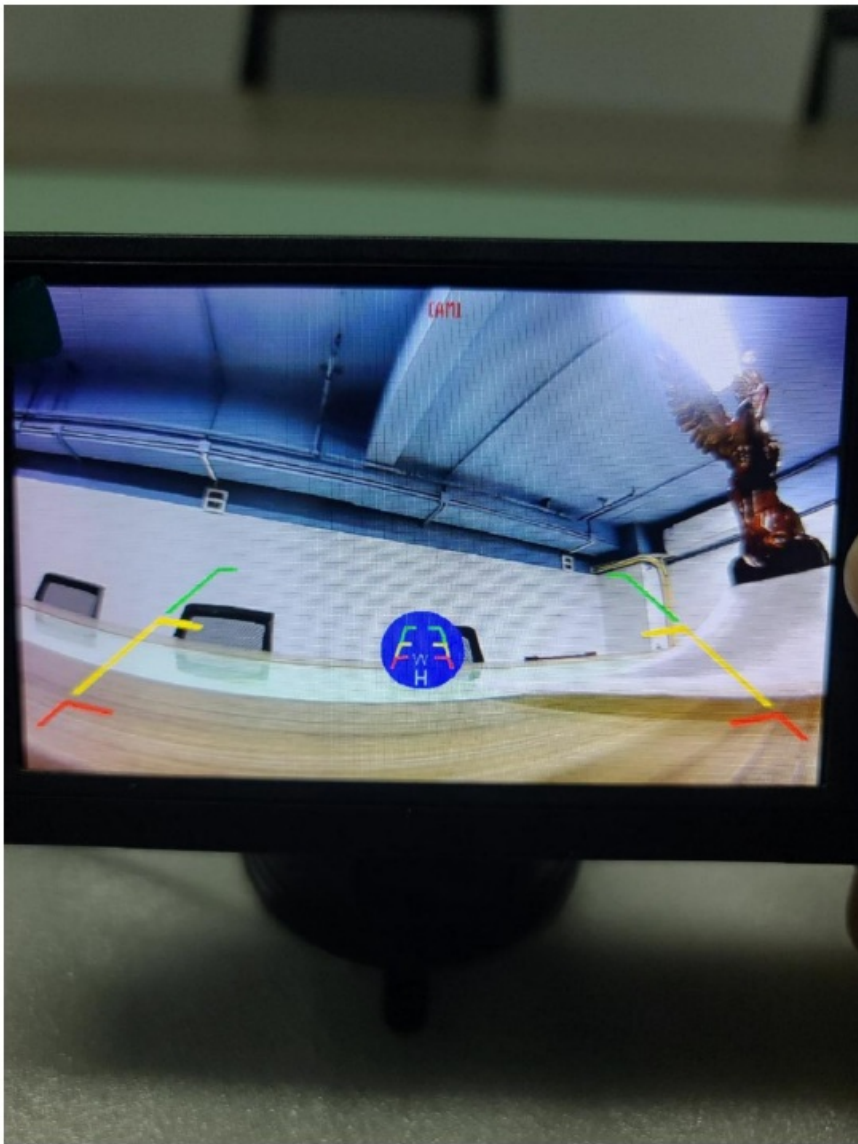


Image flipping

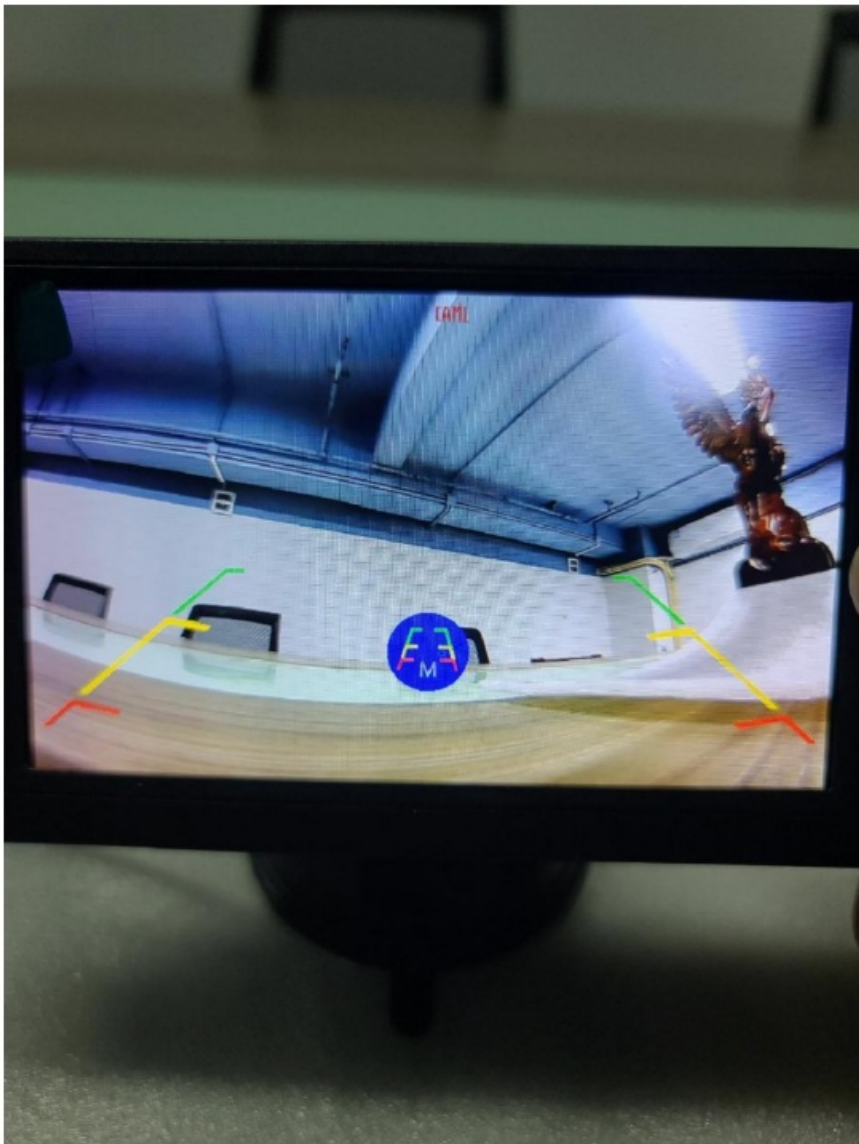


Parking guideline adjustment (W/H). Adjusting the guideline width and the height of the position.



Parking guideline adjustment (M). Adjusting the guideline position left/right.

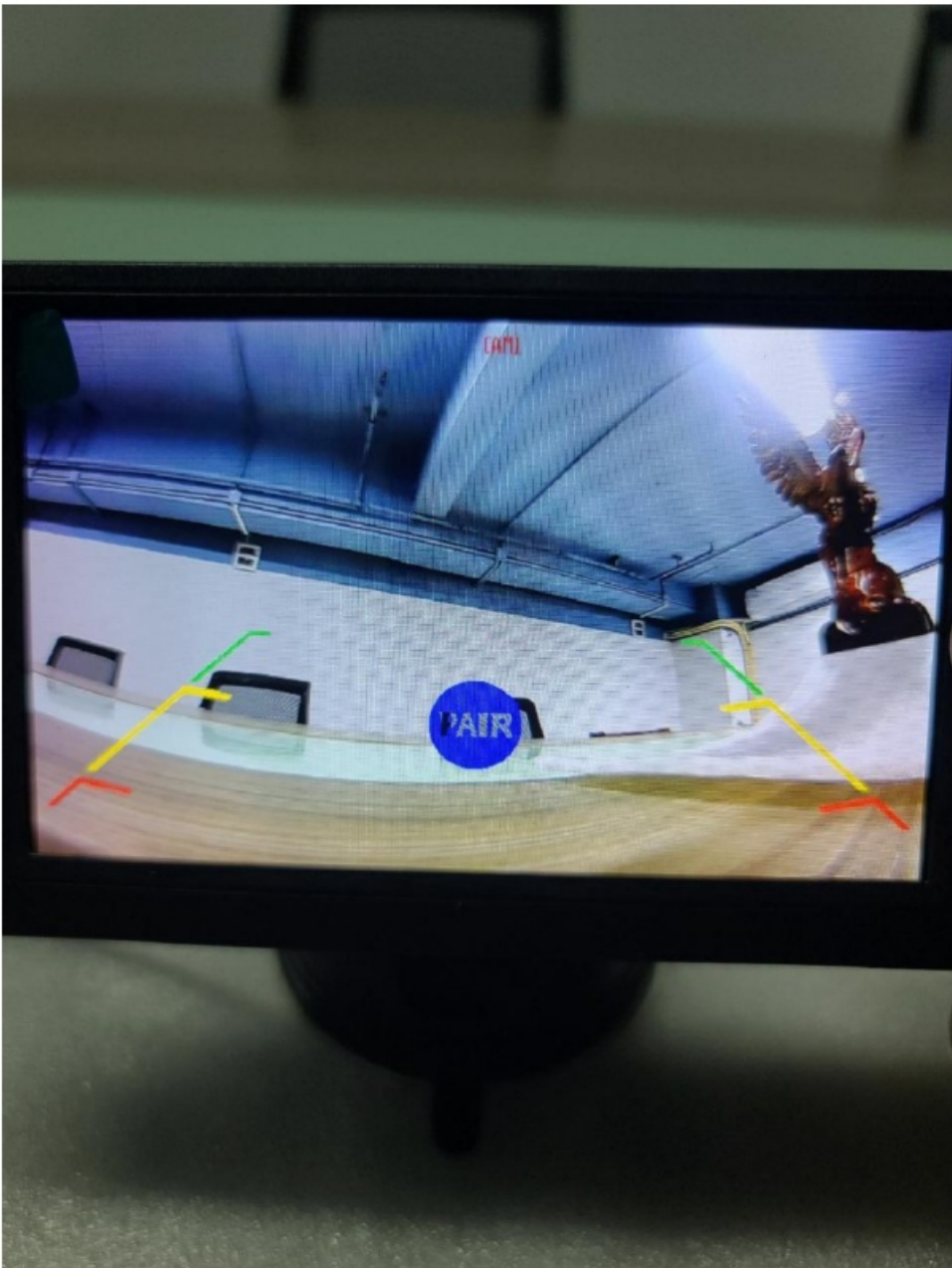




## The Functions



Signal pairing mode



#### **Camera channel switching:**

On the default screen, just click the “+” button. Each time you click the “+” button, it will cycle through CAM1 → CAM2 → split screen.

#### **Function switching:**

Click the “M” (menu) button to switch functions.

#### **Brightness adjustment:**

Click the “+” button to increase the brightness.

Click the “-” button to decrease the brightness.

#### **Color adjustment:**

Click the “+” button to increase the colors.

Click the “-” button to decrease the colors.

#### **Contrast ratio adjustment:**

Click the “+” button to increase the contrast.

Click the “-” button to decrease the contrast.

#### **Image Flipping:**

Click the “+” button to flip the image vertically.

Click the “-” button to flip the image horizontally.

#### **Parking guidelines adjustment (W/H):**

Click the “+” button to increase and decrease the guideline’s width.

Click the “-” button to move the guideline up/down.

#### **Parking guidelines adjustment (M):**



Click the “+” button to move the position of the guidelines to the left.  
Click the “-“ button to move the position of the guidelines to the right.

**Parking guidelines on/off:**

Click the “+” button to turn the guidelines on/off.  
Click the “-“ button to turn the guidelines on/off.

## SAFETY INSTRUCTIONS



**READ** the user instructions carefully and especially observe the safety information. If you do not follow the safety instructions and information on proper handling in this manual, we assume no liability for any resulting personal injury or damage to property. Such cases will invalidate the warranty.

Electrical devices can expose people, especially children, to hazards that can cause serious injury or death. The use of electrical devices can present hazards including, but not limited to, injury, fire, electric shock, and damage to the electrical system. These safety instructions are intended to give you the information you need to use the **Nince** reversing camera and avoid such hazards. Common sense and respect for the device will help reduce the risk of injury.

**All possible hazards cannot be covered here, but we have tried to highlight some of the important ones. Also, observe the warnings or safety instructions in the individual chapters of this manual.**

Contact us by e-mail at [jordynair@gmail.com](mailto:jordynair@gmail.com), if you have questions that remain unanswered by these warnings & safety instructions.

### General Device Safety

- Do not use the camera and monitor for any other purpose other than its intended use (see the chapter “INTENDED USE”).
- The camera and monitor are designed and intended for private use and are not suitable for commercial or industrial use.
- Do not use operate the monitor when you are on the road and have to pay attention to traffic.
- The monitor is intended for use in a vehicle only and must be protected from rain.
- Handle the devices carefully. Jolts, impacts, or a fall even from a low height can damage a device.
- Do not place the camera and monitor under mechanical stress.
- The camera and monitor need to be properly and securely installed and connected. Follow the instructions to prevent any possible damage/injury.
- Never use accessories not recommended by the manufacturer. They can pose a danger to the user and damage the devices.
- Never drop or insert any object or fingers into any opening.
- Do not apply excessive force when using the buttons on the monitor.
- Do not apply excessive force on the display and do not touch the display with sharp objects.
- Do not use the monitor in dusty environments.
- If it is no longer possible to operate the camera or monitor safely, take them out of operation and protect them from any accidental use. A safe operation can no longer be guaranteed if a device:
  - is visibly damaged,
  - is no longer working properly,
  - has been stored for extended periods in poor ambient conditions or
  - has been subjected to serious transport-related stresses.

### Persons & Use

- The camera and monitor are not toys. Keep and store them out of the reach of small children.
- The camera and monitor can be used by children aged 12 years and above and persons with reduced physical, sensory, or mental capabilities or lack of experience and knowledge if they have been given supervision or instruction concerning the use of the device safely and they understand the resulting hazards.

## **Electronics**

- You may not reconstruct, self-repair, or disassemble the camera and monitor. This can damage the devices.
- Maintenance, modifications, and repairs may only be carried out by the manufacturer, a professional workshop appointed by the manufacturer, or a similarly qualified person.
- Check the monitor and the camera from time to time for damage. Never use a device if it shows signs of damage.
- Make sure your vehicle battery supplies the correct power voltage to avoid damage to the devices.
- If the power fails during the operation, turn off the monitor immediately and disconnect the cigarette lighter adapter cable.
- If smoke is produced, or there are any unusual sounds or smells, immediately disconnect the cigarette lighter adapter cable. In these cases, the monitor and camera should not be used until they have been inspected by the manufacturer, or a similarly qualified person. Never inhale smoke from a potential device fire. If you have inhaled smoke, however, consult a doctor. The inhalation of smoke can be harmful.

## **Cables**

- Do not modify the cables.
- Check the cables periodically for damage. Never use a cable if there are any signs of damage.
- Never force a connector into a connection. If the connector and connection don't come together easily, they probably don't match. Check for obstructions and make sure the connector matches the connection and that you have correctly positioned the connector.
- Never unplug a cable by pulling the cable. Always pull on the connector.
- The cables must not be kinked, pinched, or twisted.
- Make sure that the cables are not squeezed, bent, damaged by sharp edges, or put under mechanical stress.
- Avoid excessive thermal stress on the cables due to extreme heat or cold.
- Children may get entangled when playing with the cables (danger of strangulation). Electric cables are not toys.

## **Heat & Cooling**

- The monitor may become warm during operation. This is normal.
- Do not cover the monitor while it is in operation as this may cause the device to overheat. This poses a risk of fire, electric shock, or injury.
- Make sure that the ventilation around the monitor is good during use.
- Keep the monitor and camera away from heat sources and away from areas where the ambient temperature is relatively high. Never use the devices near naked flames (such as burning candles) or on hot surfaces.
- The camera and monitor are designed to work best in normal ambient temperatures between – 10°C and +60°C and to be stored at temperatures between -10°C and +60°C. The devices may be damaged life may be shortened if the devices are stored or used outside this temperature range. Do not subject your devices to

dramatic changes in temperature.

## **Water**

**WARNING:** The monitor is not waterproof. The camera has an IP67 rating and is waterproof.

- Never use the monitor with damp or wet hands. Moisture can cause electric shock or short circuits.
- Do not expose the monitor to rain or water to avoid a short circuit. Close the sunroof and windows of your vehicle during rain.
- Never pour liquids over or near the monitor. There is a risk of electric shock. If liquid does get into the housing, immediately disconnect the cigarette lighter adapter cable.

## **CLEANING**

- Put the power off before cleaning. Always unplug your cigarette lighter adapter cable.
- The camera is waterproof and can be cleaned with water and a cloth.
- A soft dry cloth is recommended for cleaning the exterior of the monitor.
- Do not immerse the monitor in water or any other liquids. It is not allowed to rinse the device with water, to prevent the water from leaking into the electrical circuit and causing malfunctions.
- Be careful not to put too much pressure on the display and buttons of the monitor while cleaning.
- Under no circumstances use aggressive cleanings agent, cleaning alcohol, or other chemical solutions since these can penetrate the housing or impair functionality.
- Do not use abrasive objects for cleaning.
- Cleaning must not be performed by children.

## **MAINTENANCE & SERVICE**

- Apart from occasional cleaning, the monitor and the camera are maintenance-free.
- You may not reconstruct, self-repair, or disassemble the devices.
- Check regularly for damage and severe wear.
- Check the fixation of the camera regularly.



### **WARNINGS:**

- Do not attempt to open the devices for maintenance. Removing the housing or improper reassembly may cause electric shocks, damage, short circuit, or fire.
- If for any reason you open the housing, the warranty will become null and void. The devices contain no user-serviceable parts.
- Maintenance, service, and repairs may only be carried out by the manufacturer, a professional workshop appointed by the manufacturer, or a similarly qualified person. To obtain maintenance or service, contact us first at our e-mail address [jordynair@gmail.com](mailto:jordynair@gmail.com).
- For missing accessories such as the manual or other items, contact us at the above-mentioned email address.
- In case of a defect, return the product to **Nince** with a failure description, proof of purchase, and all accessories.

## STORAGE & TRANSPORT

- We advise cleaning the monitor and camera before long-time storage.
- Store the devices in a place not exposed to sunlight & humidity, and which is dust-free.
- Do not store the devices in extremely high or extremely low temperatures. This can damage the devices.
- Store the devices and accessories beyond the reach of small children.
- Do not wrap a cable tightly around a device when storing. This causes undue strain on the cable. Over time, this will damage the cable resulting in an unsafe condition for the user.
- Store the cables loosely coiled.
- Protect the devices against vibrations and shocks during transport.
- After transport or storage at very cold temperatures, the monitor must be accustomed to room temperature for approx. 30 minutes due to possible condensation. After that, the devices can be used.

## DISPOSAL & RECYCLING

This product is designed and manufactured with high-quality materials and components, which can be recycled and reused.

### Device Disposal



■ This product complies with the Waste Electrical and Electronic Equipment Directive 2012/19/EU (WEEE). The crossed-out wheeled bin symbol on the device indicates that, at the end of its life, the product must be disposed of separately from normal household waste and taken to a separate collection center for the recycling of electrical and electronic equipment or returned to the seller at the time a new similar device is purchased. The user is responsible for taking the device to a waste collection service at the end of its service life. Correct separate collection of waste with a view to subsequent recycling, processing, and environmentally friendly disposal of the device helps to prevent possible negative impacts on the environment and health and promotes the recycling of the materials of which the product is composed. The unlawful disposal of the product by the user results in administrative sanctions lay down by law. For more detailed information on the recycling of this product and the collection systems available, contact your local waste disposal service or the shop where you purchased the product. Comply with your legal obligations and contribute to the protection of the environment.

### Packing Material Disposal



**Follow the notes and markings on the packaging.**

Ensure that plastic bags, packaging, etc. are disposed of in an environmentally sound manner. Do not just dispose of these materials with your normal household waste, but make sure they are collected for recycling.

## WARRANTY & LIABILITY

**Nince** guarantees that for one year from the date of purchase, this product will be free from defects in materials and workmanship. This warranty applies to products used for personal purposes, and not for commercial or rental purposes. **Nince**, at its discretion, will replace or repair this product or any component of the product found to be defective during the warranty period. Replacement will be made with a new or refurbished product or component. If the product is no longer available, a replacement may be made with a similar product of equal or greater value, no refunds shall be given. This is your exclusive warranty. Your replacement unit will be returned to you for no charge and will be covered under this warranty for the balance of the warranty period.

This warranty is valid for the original purchaser from the date of initial purchase and is not transferrable. Proof of purchase is required to obtain support under the warranty.

**This warranty does not cover:**

- negligent use or misuse of the product;
- use with incorrect voltage or current;
- water damage;
- use contrary to the operating instructions;
- disassembly, repair, or modification by anyone other than Nince;
- damage caused by accidents or disasters, such as fire, flood, earthquake, war, vandalism, or theft;
- damage caused by incorrect maintenance and storage;
- change of color that might happen over time;
- normal wear and tear.

Damage caused by failure to observe this manual will void the warranty! We do not accept any liability for consequential damage! We accept no liability for material damage or personal injury caused by improper use or failure to observe the safety instructions! In such cases, the warranty becomes void!

**Nince** reserves the right to make changes at any time, without notice or obligation, in the user manual, colors, specifications, accessories, materials, and models.

All rights reserved. No part of this publication may be reproduced, distributed, or transmitted in any form or by any means, including photocopying, recording, or other electronic or mechanical methods, without the prior written permission of the publisher, except in the case of brief quotations embodied in critical reviews and certain other noncommercial uses permitted by copyright law. For permission requests, contact us at the address/e-mail on the last page.

## ENSURE SATISFACTION

Are you satisfied with your purchase? Then let us and future customers know! Scan code 1 to share your opinion on [bol.com](https://bol.com)!

Are you not satisfied? Please contact us via your bol.com dashboard so that we can help you. Scan code 2 for this.

**Satisfied? Scan this code.**



**Dissatisfied? Scan this code.**



## CUSTOMER SUPPORT

Geïmporteerd door: NINN Ecommerce Do Good Holding BV Tuinstraat 28 1815TM  
Alkmaar Nederland




: [jordynair@gmail.com](mailto:jordynair@gmail.com)

***nince***

---

## Documents / Resources

	<p><a href="#">nince ARC Reverse Camera</a> [pdf] User Manual ARC Reverse Camera, ARC, Reverse Camera, Camera</p>
---	---

## References

- [bol De winkel van ons allemaal | bol](#)
- [User Manual](#)

[Manuals+](#), [Privacy Policy](#)

This website is an independent publication and is neither affiliated with nor endorsed by any of the trademark owners. The "Bluetooth®" word mark and logos are registered trademarks owned by Bluetooth SIG, Inc. The "Wi-Fi®" word mark and logos are registered trademarks owned by the Wi-Fi Alliance. Any use of these marks on this website does not imply any affiliation with or endorsement.