

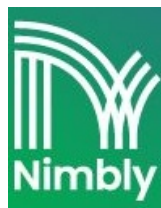


nimly Touch Pro Electronic Door Lock with Fingerprint Reader Installation Guide

[Home](#) » [nimly](#) » nimly Touch Pro Electronic Door Lock with Fingerprint Reader Installation Guide 

Contents

- [1 nimly Touch Pro Electronic Door Lock with Fingerprint Reader](#)
- [2 Product Information](#)
- [3 Features](#)
- [4 Contents of the Box](#)
- [5 Product Usage Instructions](#)
- [6 product Installation](#)
- [7 product Programming](#)
- [8 Installation Guide](#)
- [9 Programming Guide](#)
- [10 Documents / Resources](#)
- [11 Related Posts](#)



nimly Touch Pro Electronic Door Lock with Fingerprint Reader



Product Information

Touch Pro

Touch Pro is an electronic door lock system that offers keyless entry to your home or office. It can be easily installed on any standard door and comes with an outside unit, inside unit, and handles. Touch Pro uses a hook bolt and latch bolts to secure your door and can be programmed with up to 999 user codes.

Features

- Keyless entry
- Hook bolt and latch bolts for added security
- Programmable with up to 999 user codes
- Emergency key access
- Compatible with nimble Connect Module & Gateway (sold separately)

Contents of the Box

- Outside unit
- Inside unit
- Handles
- Emergency keys

- Screws and mounting hardware
- Battery holder and cover
- Insulation and rubber seals
- Spacer for strike plate

Product Usage Instructions

product Installation

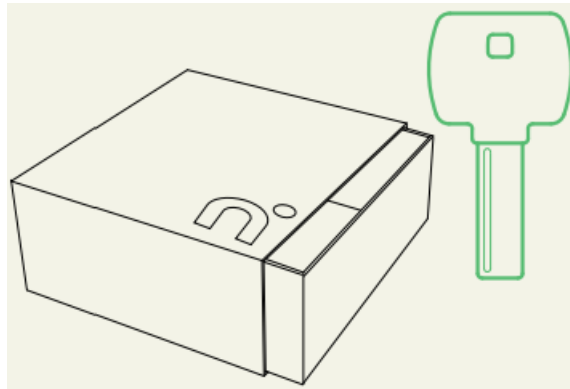
1. Review the contents of the box and find the emergency keys. Make sure you always have the emergency keys available during installation.
2. Mount the striker plate in your door frame, using the existing screws. If needed, you may readjust the adjustment tabs after the installation.
3. Verify that the latch bolts are set in the correct direction with the inclined side towards the doorframe. If necessary, remove the front plate and rotate the latch bolts. Mount the mortise in your door, using the existing screws.
4. Place the rubber seal and the outside unit on the door. Make sure that the recessed area of the gasket is mounted towards the back of the lock. The red mark on the square spindle must point up. Pass the wire through the top.
5. Adjust the cable screws so that they correspond to the thickness of the door and add an extra threaded portion. Use powerful pliers to cut to the desired length. The length should be equal on all screws. Cut further if necessary.
6. Locate the screw holes from the inside. Place the supplied insulation in both door holes. Mount the inside bracket with the cable screws. Tighten carefully. Two screws at the top and two at the bottom.
7. Place the rubber seal on the inner bracket and connect the cable to the inside unit. Make sure that the seal covers the entire bracket. Optional: Did you purchase nimble Connect? Install the module before proceeding.
8. Insert the excess cord into the door to prevent it from getting caught. Slide the inside unit into place.
9. Fit the inside of the lock by fastening both the screws in the battery holder and the one at the bottom. Install all batteries and the battery cover.
10. Mount both handles. The exterior door handle has a hole in the key cylinder. Place the handles in the desired direction and use the supplied tool to fasten the screws.
11. Make sure the lock works with your emergency keys before closing the door. Remove the key and store one or more of these safely outside your home. Test the lock electronically with factory code 123 #.
12. Close the door and verify that the hook bolt extends upon closure. If the gap between the door frame and the door becomes too large, you can use the included spacer behind the strike plate.

product Programming

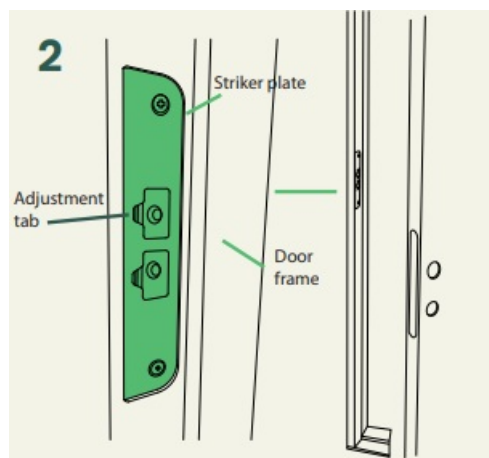
1. If you purchased the nimble Connect Module & Gateway, install the module according to its own instructions and carry out the programming by using the application. Otherwise, continue with the next step.
2. User slots 000, 001, and 002 are reserved for the master code(s). Only one is mandatory. The factory code is 123. All codes can contain up to 8 digits, we recommend at least 6 for improved security. Enter: * 000 123 * new master code * new master code * Example: * 000 123 * 345678 * 345678.
3. User codes can be added to user slots from 003 to 999. All codes can contain up to 8 digits.

Installation Guide

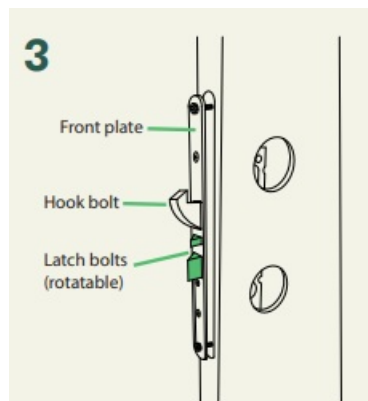
1. Review the contents of the box and find the emergency keys. Make sure you always have the emergency keys available during installation.



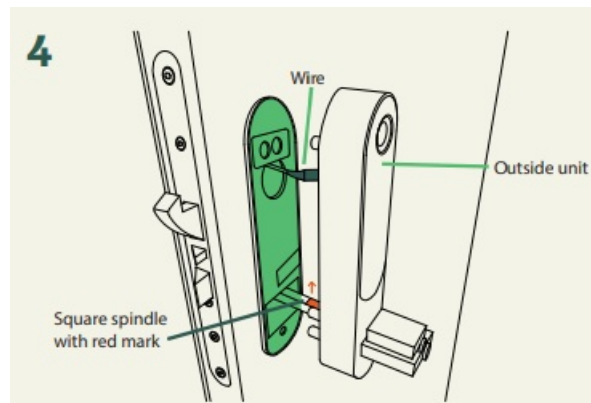
2. Mount the striker plate in your door frame, using the existing screws. If needed, you may readjust the adjustment tabs after the installation.



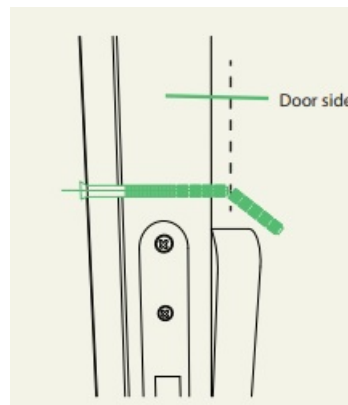
3. Verify that the latch bolts are set in the correct direction with the inclined side towards the doorframe. If necessary, remove the front plate and rotate the latch bolts. Mount the mortise in your door, using the existing screws.



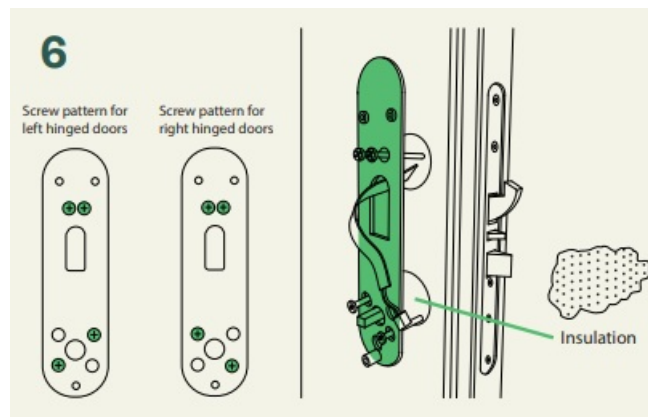
4. Place the rubber seal and the outside unit on the door. Make sure that the recessed area of the gasket is mounted towards the back of the lock. The red mark on the square spindle must point up. Pass the wire through the top.



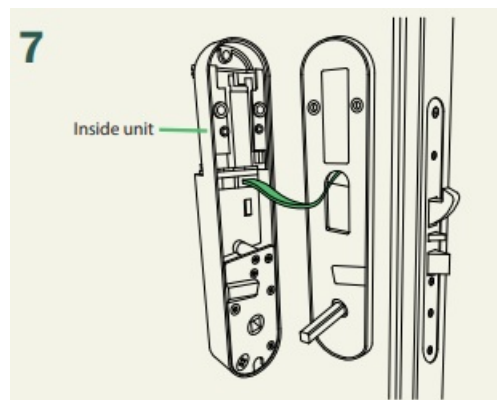
5. Adjust the cable screws so that they correspond to the thickness of the door and add an extra threaded portion. Use powerful pliers to cut to the desired length. The length should be equal on all screws. Cut further if necessary.



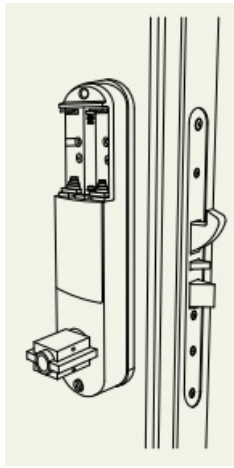
6. Locate the screw holes from the inside. Place the supplied insulation in both door holes. Mount the inside bracket with the cable screws. Tighten carefully. Two screws at the top and two at the bottom.



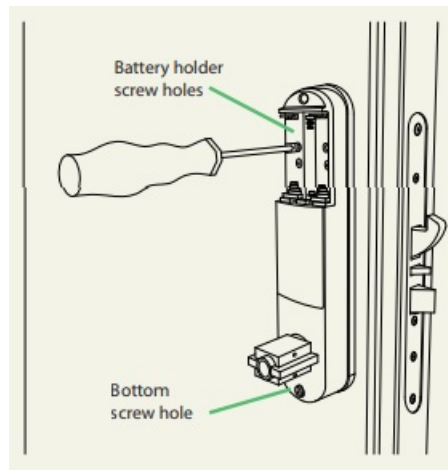
7. Place the rubber seal on the inner bracket and connect the cable to the inside unit. Make sure that the seal covers the entire bracket. Optional: Did you purchase nimble Connect? Install the module before proceeding.



8. Insert the excess cord into the door to prevent it from getting caught. Slide the inside unit into place.



9. Fit the inside of the lock by fastening both the screws in the battery holder and the one at the bottom. Install all batteries and the battery cover.



10. Mount both handles. The exterior door handle has a hole in the key cylinder. Place the handles in the desired direction and use the supplied tool to fasten the screws.

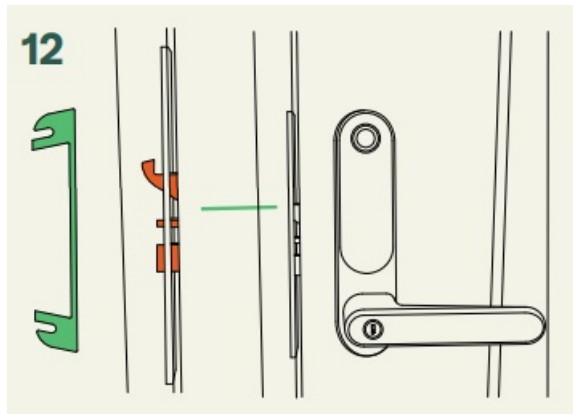


11. Make sure the lock works with your emergency keys before closing the door. Remove the key and store one or more of these safely outside your home. Test the lock electronically with factory code 123 #.



12. Close the door and verify that the hook bolt extends upon closure. If the gap between the door frame and the

door becomes too large, you can use the included spacer behind the strike plate.



Programming Guide

1. Did you purchase Connect Module & Gateway?

Install the module according to its own instructions and carry out the programming by using the application. Otherwise, continue with the next step.



2. **Create master code** – used for access and programming. User slot 000, 001 and 002 are reserved for the master code(s). Only one is mandatory. The factory code is 123. All codes can contain up to 8 digits, we recommend at least 6 for improved security.

- **Enter:** * 000 123 * new master code * new master code *
- **Example:** * 000 123 * 345678 * 345678.



3. **Create user code** – used for access only. User codes can be added to user slots from 003 to 999. All codes can contain up to 8 digits.

Enter: * 003 master code * new user code * new user code *

Example: * 003 345678 * 2323 * 2323 *



4. **Add key tag** – used for access only. Key tags can be added to user slots 000 to 999.

- **Enter:** #8 user slot master code # place key tag on the panel.
- **Example:** #8 000 345678 # place key tag on the panel.



5. **Add first master finger** – used for access and programming.

The first master finger is automatically assigned user location 000. For 001 or 002, see the advanced manual. Enter # # # and place your finger on the scanner. When it beeps, lift your finger off and place it back on the scanner, repeat again when prompted.



6. **Add first user finger** – used for access only. User fingers can be added to user slots 003 to 199. Enter # # # and place your master finger on the scanner. Enter user slot 003 and place the user finger on the scanner. When it beeps, lift your finger off and place it back on the scanner, repeat again when prompted.



ADVICE!

WRITE DOWN WHICH USER IS ALLOCATED TO WHAT USER SLOT

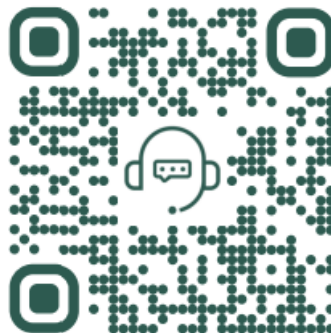
- **Want more detailed information?**

Scan for our advanced manual

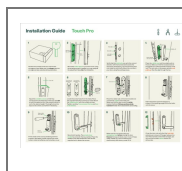


- **Do you need assistance?**

Scan to get in touch with customer support



Documents / Resources



[nimly Touch Pro Electronic Door Lock with Fingerprint Reader](#) [pdf] Installation Guide
Touch Pro Electronic Door Lock with Fingerprint Reader, Touch Pro, Electronic Door Lock with Fingerprint Reader, Touch Pro Electronic Door Lock with Fingerprint Reader, Touch Pro Electronic Door Lock, Electronic Door Lock, Door Lock, Lock