



# Nikon ML-L7 Remote Control User Manual

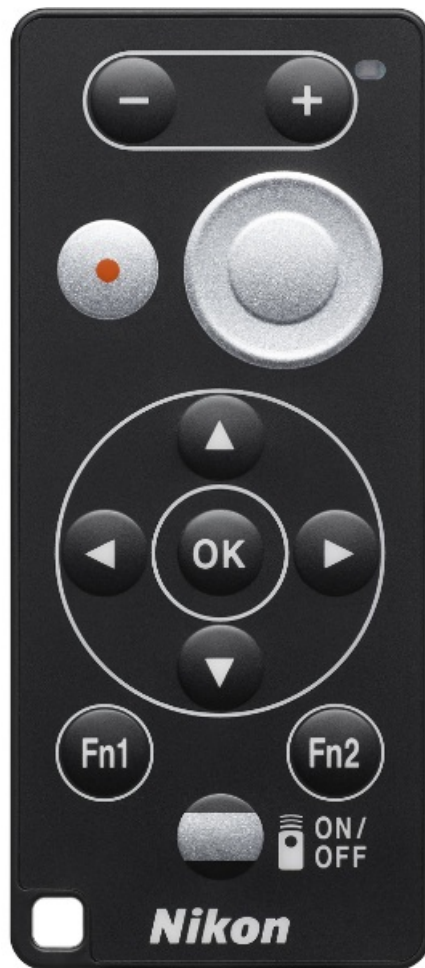
[Home](#) » [Nikon](#) » Nikon ML-L7 Remote Control User Manual 

## Contents

- [1 Nikon ML-L7 Remote Control](#)
- [2 Product Information](#)
- [3 Product Usage Instructions](#)
- [4 For Your Safety](#)
- [5 Precautions for Use](#)
- [6 How to Use](#)
- [7 Specifications](#)
- [8 Documents / Resources](#)
  - [8.1 References](#)
- [9 Related Posts](#)

# ***Nikon***

**Nikon ML-L7 Remote Control**



## Product Information

The ML-L7 Remote Control is a wireless remote control device that is compatible with select cameras. It allows users to remotely control the camera for still image shooting and movie recording.

### Specifications:

- **Model Name:** ML-L7
- **Compatible battery:** 3V CR2032 (DL2032/5004L) lithium battery
- **Battery life:** About 1 year (200 remote shooting operations per day)
- Bluetooth connectivity

## Product Usage Instructions

### Pairing the Remote Control and Camera

1. Enable pairing on the camera.
2. Press and hold the power button on the remote control for at least 3 seconds.

**Connecting to a Paired Camera** To connect the remote control to a paired camera, simply press and hold the power button. The status lamp on the remote control will indicate the connection status.

**Auto Off Function of the Remote Control** The remote control will automatically turn off in certain situations. To re-pair or check the pairing settings on the camera, press and hold the power button.

### Replacing the Battery To replace the battery, follow these steps:

1. As shown in Figure 2, pull out the battery holder.
2. Replace the battery, ensuring that the positive and negative sides are correctly oriented.

Please refer to your camera's manual for specific functions and details related to using the ML-L7 Remote Control.

## **Remote Control**

You can perform remote operations such as recording movies or taking pictures by connecting the ML-L7 Remote Control and camera via Bluetooth® wireless technology. The operations that can be performed with the ML-L7 Remote Control vary depending on the camera. For details, refer to the Reference Manual (PDF format) of your camera.

The Reference Manual can be downloaded from our Download Center at the URL below: <https://downloadcenter.nikonimglib.com>.

## **Compatible Cameras**

See our website or brochures for information about the cameras that are compatible with the ML-L7 Remote Control.

## **For Your Safety**

To prevent damage to property or injury to yourself or to others, read "For Your Safety" in its entirety before using this product. Keep these safety instructions that all those who use this product will read them

### **DANGER**

Failure to observe the precautions marked with this icon carries a high risk of death or severe injury.

### **WARNING**

Failure to observe the precautions marked with this icon could result in death or severe injury.

### **CAUTION**

Failure to observe the precautions marked with this icon could result in injury or property damage.

### **WARNING**

- Do not use it while walking or operating a vehicle. Failure to observe this precaution could result in accidents or other injury.
- Do not disassemble or modify this product. Do not touch internal parts that become exposed as a result of a fall or other accident. Failure to observe these precautions could result in electric shock or other injury.
- Should you notice any abnormalities such as the product producing smoke, heat, or unusual odors, immediately disconnect the batteries. Continued operation could result in fire, burns, or another injury.
- Keep dry. Do not handle it with wet hands. Failure to observe these precautions could result in fire or electric shock.
- Do not use this product in the presence of flammable dust or gases such as propane, gasoline, or aerosols. Failure to observe this precaution could result in an explosion or fire.
- Keep this product out of reach of children. Failure to observe this precaution could result in injury or product malfunction. In addition, note that small parts constitute a choking hazard. Should a child swallow any part of this product, seek immediate medical attention.
- Do not entangle, wrap or twist the straps around your neck. Failure to observe this precaution could result in

accidents.

- Do not use batteries not specifically designated for use with this product. Failure to observe this precaution could result in fire or electric shock.

## CAUTION

Turn this product off when its use is prohibited. Disable wireless features when the use of wireless equipment is prohibited. The radio-frequency emissions produced by this product could interfere with equipment onboard aircraft or in hospitals or other medical facilities.

- Remove the batteries if this product will not be used for an extended period. Failure to observe this precaution could result in fire or product malfunction.
- Do not leave the product where it will be exposed to extremely high temperatures, for an extended period such as in an enclosed automobile or in direct sunlight. Failure to observe this precaution could result in fire or product malfunction.

## DANGER for Batteries

- **Do not ingest batteries. Chemical burn hazard.** This product includes one or more lithium coin/button cell batteries. Swallowing lithium coin/button cell batteries can cause severe internal burns in just 2 hours and can lead to death. Keep new and used batteries away from children. If the battery compartment does not close securely, stop using the product and keep it out of reach of children. If you think batteries may have been swallowed or placed anywhere inside the body, seek immediate medical attention.
- Do not mishandle batteries. Failure to observe the following precautions could result in the batteries leaking, overheating, rupturing, or catching fire:
  - Do not expose batteries to flame or excessive heat.
  - Do not disassemble.
  - Do not short-circuit the terminals by touching them to necklaces, hairpins, or other metal objects.
  - Do not expose batteries or the products in which they are inserted to powerful physical shocks.
- If battery liquid comes into contact with the eyes, rinse with plenty of clean water and seek immediate medical attention. Delaying action could result in eye injuries.
- Follow the instructions of airline personnel. Batteries left unattended at high altitudes in an unpressurized environment may leak, overheat, rupture, or catch fire.

## WARNING for Batteries

- **Do not immerse batteries in water or expose them to rain.** Failure to observe this precaution could result in fire or product malfunction. Immediately dry the product with a towel or similar object should it become wet.
- **Discontinue use immediately should you notice any changes in the batteries, such as discoloration or deformation.** Failure to observe this precaution could result in the batteries leaking, overheating, rupturing, or catching fire.
- **Insert batteries in the correct orientation.** Failure to observe this precaution could result in the batteries leaking, overheating, rupturing, or catching fire.
- **Prior to disposal, insulate battery terminals with tape.**  
Overheating, rupture, or fire may result should metal objects come into contact with the terminals. Recycle or

dispose of batteries in accordance with local regulations.

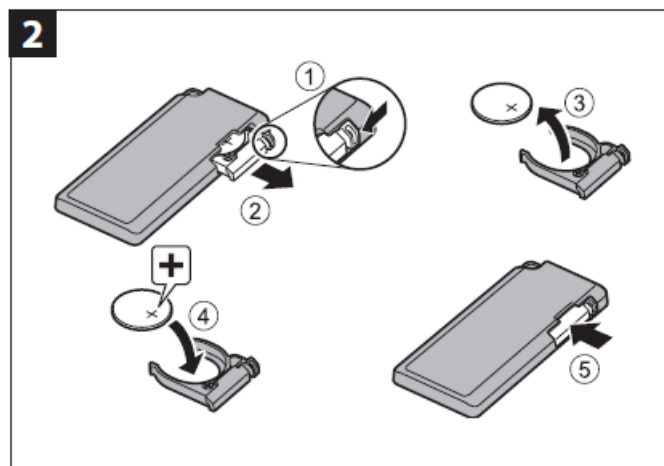
- **If battery liquid comes into contact with a person's skin or clothing, immediately rinse the affected area with plenty of clean water.** Failure to observe this precaution could result in skin irritation

## Notices

- No part of this manual may be reproduced, transmitted, transcribed, stored in a retrieval system, or translated into any language in any form, by any means, without Nikon's prior written permission.
- While every effort has been made to ensure that the information in this manual is accurate and complete, we would appreciate it were you to bring any errors or omissions to the attention of the Nikon representative in your area (address provided separately).

## Precautions for Use

- Do not drop the remote control, strike it against a hard object such as a rock, or expose it to water.
- Do not insert a wet battery in the remote control. Do not pull out the battery holder when the remote control or your hands are wet. Doing so may cause water to seep inside the remote control and result in a malfunction.
- If moisture such as water droplets or a foreign substance adheres to the outside of the remote control or the battery holder, immediately wipe it off with a soft dry cloth.
- Make sure that the battery holder is securely inserted.
- Do not leave the remote control in cold conditions or in hot conditions of 40°C (104°F) or more for a long period of time.
- Do not suddenly bring the remote control to a high-humidity environment if it is exposed to extreme cold for an extended period. Condensation may form inside the remote control.



## About Radio Wave Interference

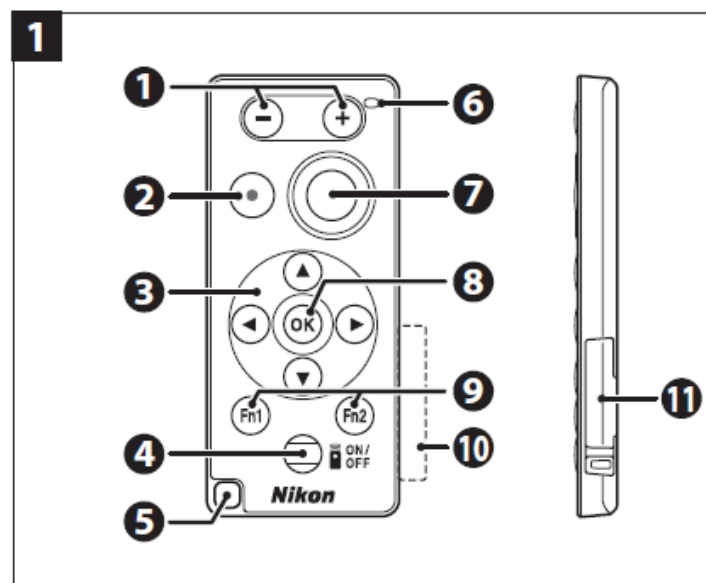
If there is any radio wave interference, the response of the remote control may be delayed.

## Caring for the Product

- If moisture such as water droplets or a foreign substance adheres to the remote control, wipe it off with a soft dry cloth.
- Do not use alcohol, thinner or other volatile chemicals.

## Parts and Functions of the Remote Control (Figure 1)

1. **button/+ button:** Performs operations such as zoom control.
2. **Movie record button:** Starts/stops movie recording.
3. **Multi-selector:** Functions similarly to the multi-selector on the camera. Can be used for manual focus adjustment or item selection.
4. Power button: Press the button to turn on the remote control and search for the camera that has already been paired. Keep holding down the button (for at least 3 seconds) to search for a camera that is not currently paired with the remote control. While the remote control is on, press the button to turn it off.
5. Strap eyelet (straps not included)
6. **Status lamp:** Indicates the remote control status or shooting session status, based on the color and behavior of the lamp. See “Status Lamp on the Remote Control” for more information.
7. **Shutter-release button:** Functions similarly to the shutter-release button on the camera.
  - Half-press and press-and-hold operations are not available.
  - Therefore, continuous shooting which needs press-and-hold operation is not available
  - When using the self-timer, you can press the button during the countdown to cancel shooting.
8. **OK (apply selection) button:** Functions similarly to the **OK** button on the camera.
9. **Fn1 button/Fn2 button:** Functions assigned to the **Fn1** button/**Fn2** button on the remote control via the camera can be used. (These buttons are not equivalent to the **Fn** buttons on the camera.)
10. **Battery insulation sheet:** Remove this when using the remote control for the first time.
11. Battery holder



### About the Remote Control

The functions that you can perform using the remote control may vary depending on the camera. See the manual of your camera for further details.

## How to Use

### Pairing the Remote Control and Camera


Before using the remote control for the first time, it must be paired with the camera.

- In this manual, “pairing” refers to the process of mutual authentication that is performed between Bluetooth devices to establish a connection.
- Only one camera can be paired with the remote control at a time. When another camera is paired with the remote control, the pairing information kept on the remote control is replaced by that of the newly paired camera.

#### 1. Enable pairing on the camera.

- Network menu on the camera → Choose connection → Remote control → OK button →  
 Network menu on the camera → Connection to remote → OK button

#### 2. Press and hold (for at least 3 seconds) the power button on the remote control.

- Pairing starts with the remote control and camera. While the process is being performed, the status lamp on the remote control flashes quickly (about every 0.5 seconds).
- When pairing is complete, the remote control and camera are connected. The  icon is displayed on the shooting screen of the camera.
- If a pairing failure message is displayed, perform the procedure again from step 1.
- To turn off the remote control, press the power button on the remote control.

Since operations may vary depending on the camera, see the manual of your camera for further details.

### Connecting to a Paired Camera

If the camera has already been paired with the remote control, a connection can be established simply by pressing the power button on the remote control. In this case, do not press and hold the button.

- Before establishing the connection, turn on the camera and select Remote control in Choose Connection in the network menu.
- If the connection is not established properly, check the camera settings and turn the remote control off and back on again.
- A camera that was previously paired with the remote control needs to be paired again if another camera is paired with the remote control or if the camera settings are reset.

#### Auto Off Function of the Remote Control

**The remote control automatically turns off in the following situations:**

- When no pairing device has been detected for 1 minute
- When the wireless connection is interrupted and not restored within 1 minute
- When another device is selected as the pairing device on the camera

Press and hold the power button to try re-pairing or check the pairing settings on the camera.

### Status Lamp on the Remote Control

Color	Status	Description
Green	Flashing about every second	Remote control is searching for a device that has already been paired.
Green	Flashing quickly (about every 0.5 seconds)	The pairing process is being performed.
Green	Flashing about every 3 seconds	Connection is established between the remote control and the camera.
Orange	Flashes once	Still, image shooting starts.
Orange	Flashes twice	Still image shooting ends.
Red	Flashes once	The movie recording starts.
Red	Flashes twice	The movie recording ends.

- The information may vary depending on the camera.

## Replacing the Battery

As shown in Figure 2, pull out the battery holder and replace the battery while making sure that the positive and negative sides of the battery are in the correct orientation.

## Specifications

### ML-L7 Remote Control

**Compatible battery**<sup>1</sup>: 3V CR2032 (DL2032/5004L) lithium battery

**Battery life**: About 1 year (200 remote shooting operations per day)<sup>2</sup>

### Bluetooth

**Communication protocols**: Bluetooth Specification Version 4.1

**Communication distance (line of sight)**: Approx. 10 m (10 yd)<sup>3</sup>

**Operating frequency**: 2402–2480 MHz

**Maximum output power**: 4.17 dBm (EIRP)

### Operating environment

**Temperature**: 0°C–40°C (32°F–104°F)

**Humidity**: 85% or less (no condensation)

**Dimensions (W × H × D)**: Approx. 35.0 × 80.0 × 7.3 mm (1.4 × 3.2 × 0.3 in.) (excluding projections)

**Weight**: Approx. 18 g (0.7 oz) (including battery)

1. The included battery is for trial use.
2. Varies with the operating environment, operating conditions, and storage conditions.
3. No interference is assumed; the range may vary with signal strength and the presence or absence of obstacles.
  - Nikon will not be held liable for any errors this manual may contain.
  - The appearance of this product and its specifications are subject to change without notice.



Trademark Information

The Bluetooth® word mark and logos are registered trademarks owned by Bluetooth SIG, Inc. and any use of such marks by Nikon Corporation is under license.

Notes About Wireless Communication Functions

Restrictions on Wireless Devices

The wireless transceiver included in this product conforms to wireless regulations in the country of sale and is not for use in other countries (products purchased in the EU or EFTA can be used anywhere within the EU and EFTA). Nikon does not accept liability for use in other countries. Users who are unsure as to the original country of sale should consult with their local Nikon service center or Nikon-authorized service representative. This restriction applies to wireless operation only and not to any other use of the product.

Precautions when Exporting or Carrying This Product Abroad


This product is controlled by the United States Export Administration Regulations (EAR). The permission of the United States government is not required for export to countries other than the following, which as of this writing are subject to embargo or special controls: Cuba, Iran, North Korea, Sudan, and Syria (list subject to change).

Notice for Customers in the Republic of South Africa

This device complies with radio-frequency regulations



Documents / Resources

	<p><a href="#">Nikon ML-L7 Remote Control</a> [pdf] User Manual ML-L7 Remote Control, ML-L7, Remote Control, Control</p>
---	--

References

-  [index.html](#)