



niko Single Surface Mounting Box for All Flush Mounting Devices Instructions

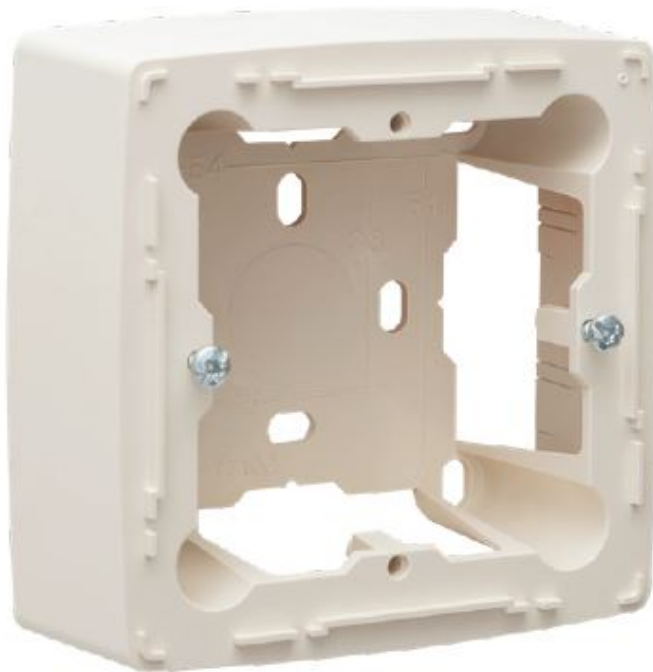
[Home](#) » [niko](#) » niko Single Surface Mounting Box for All Flush Mounting Devices Instructions 

Contents

- [1 niko Single Surface Mounting Box for All Flush Mounting Devices](#)
- [2 Technical data](#)
- [3 Documents / Resources](#)
 - [3.1 References](#)
- [4 Related Posts](#)



niko Single Surface Mounting Box for All Flush Mounting Devices



100-77100

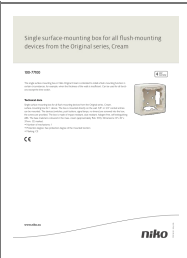
The single surface-mounting box in Niko Original Cream is intended to install a flush-mounting function in certain circumstances, for example, when the thickness of the walls is insufficient. Can be used for all functions except the time switch.

Technical data

Single surface-mounting box for all flush-mounting devices from the Original series, Cream.
surface-mounting box for 1 device. The box is mounted directly on the wall. 5/8" or 3/4" conduit entries can be mounted. The devices (switches, push buttons, signal lamps, no timers) are screwed into the box, the screws are provided. The box is made of impact-resistant, dust-resistant, halogen-free, self-extinguishing ABS. The base material is coloured in the mass, cream (approximately RAL 1013). Dimensions: 87 x 87 x 37mm. CE marked.

- **Number of mechanisms:** 1
- **Protection degree:** See the protection degree of the mounted function
- **Marking:** CE

Documents / Resources

	niko Single Surface Mounting Box for All Flush Mounting Devices [pdf] Instructions Single Surface Mounting Box for All Flush Mounting Devices, Single Surface Mounting Box, 100-77100
-------------------------------------------------------------------------------------	----------------------------------------------------------------------------------------------------------------------------------------------------------------------------------------------------------

References

- [Niko - home automation, switches, socket outlets and detector](#)