



Niko PM552-20803 Wireless Measuring Module User Manual

[Home](#) » [niko](#) » Niko PM552-20803 Wireless Measuring Module User Manual 

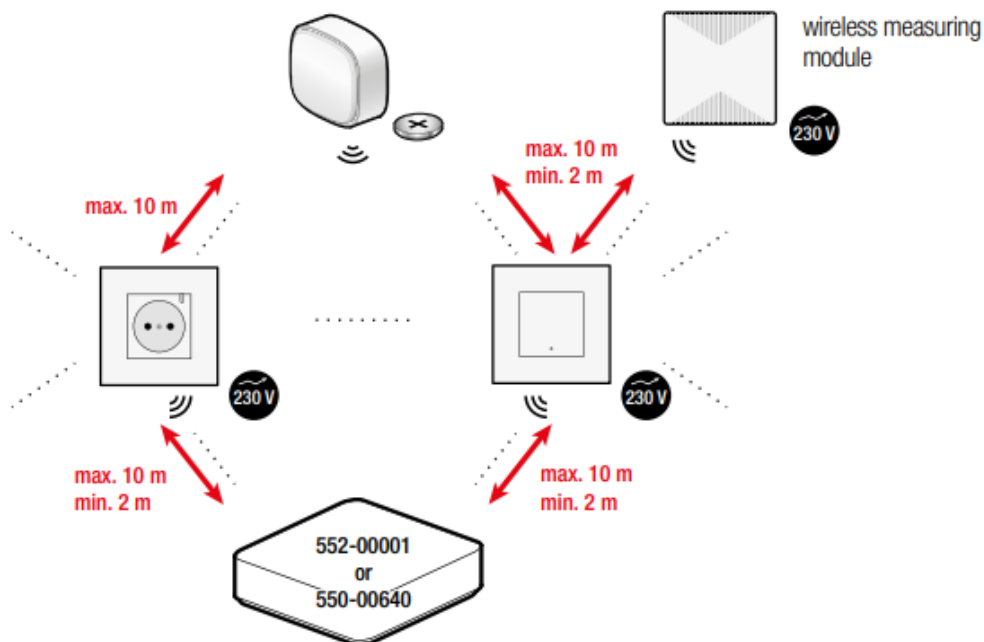
Niko PM552-20803 Wireless Measuring Module User Manual



Contents

- [1 Niko Home Control wireless network](#)
- [2 Wiring](#)
- [3 Dimensions](#)
- [4 Installation](#)
- [5 Onboarding](#)
- [6 Control](#)
- [7 LED behaviour](#)
- [8 Reset](#)
- [9 Online guide](#)
- [10 Specifications](#)
- [11 Documents / Resources](#)
 - [11.1 References](#)
- [12 Related Posts](#)

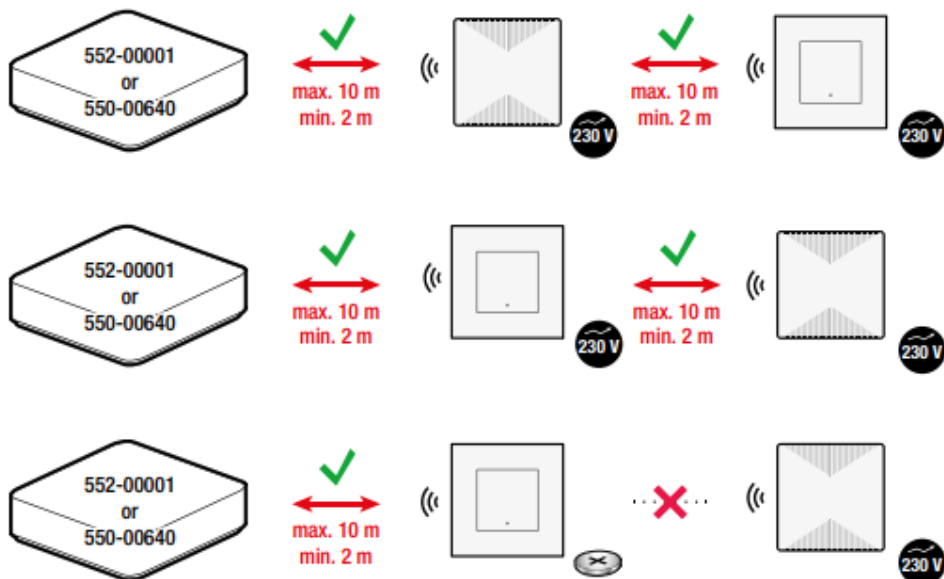
Niko Home Control wireless network



Niko Home Control draadloos netwerk

Follow the network setup advice to guarantee the meshing of the devices before installing the measuring module. More information on mesh network principles: guide.niko.eu

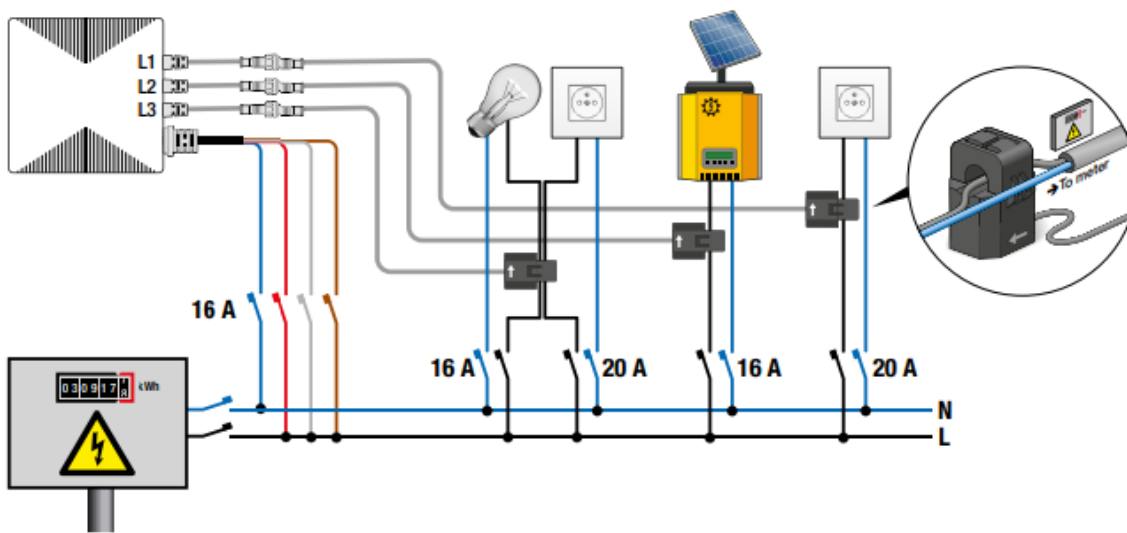
Also respect a minimum distance of 2 m between a Niko Home Control RF device (including the smart hub) and another RF transmitters (for example a Wi-Fi device) or devices such as motors, pumps, electronic LED transformers



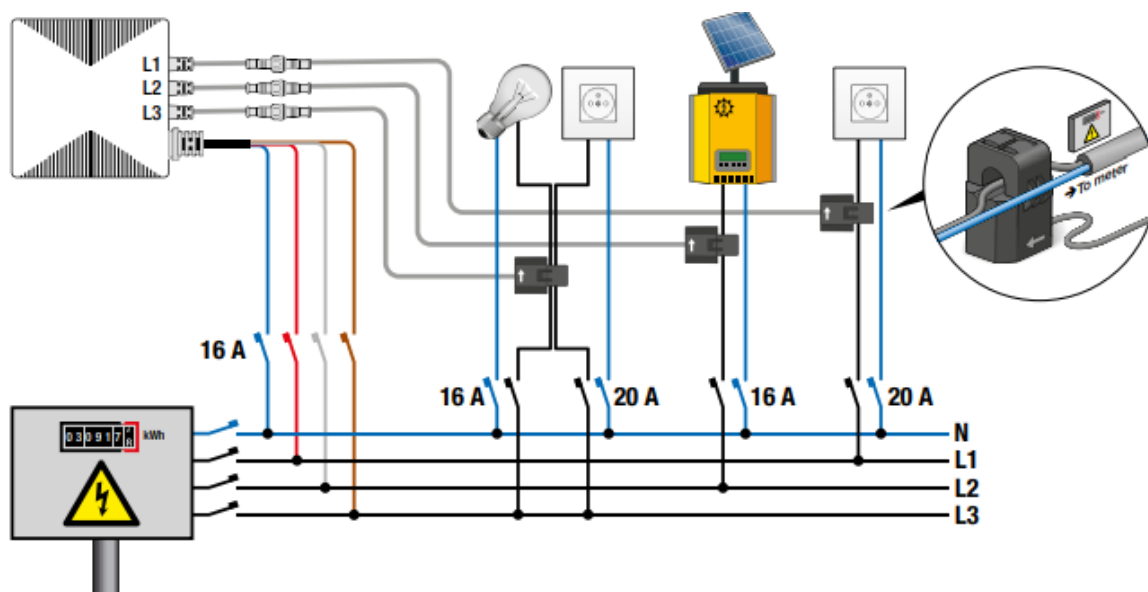
Wiring

The wireless measuring module can be submetered as follows:

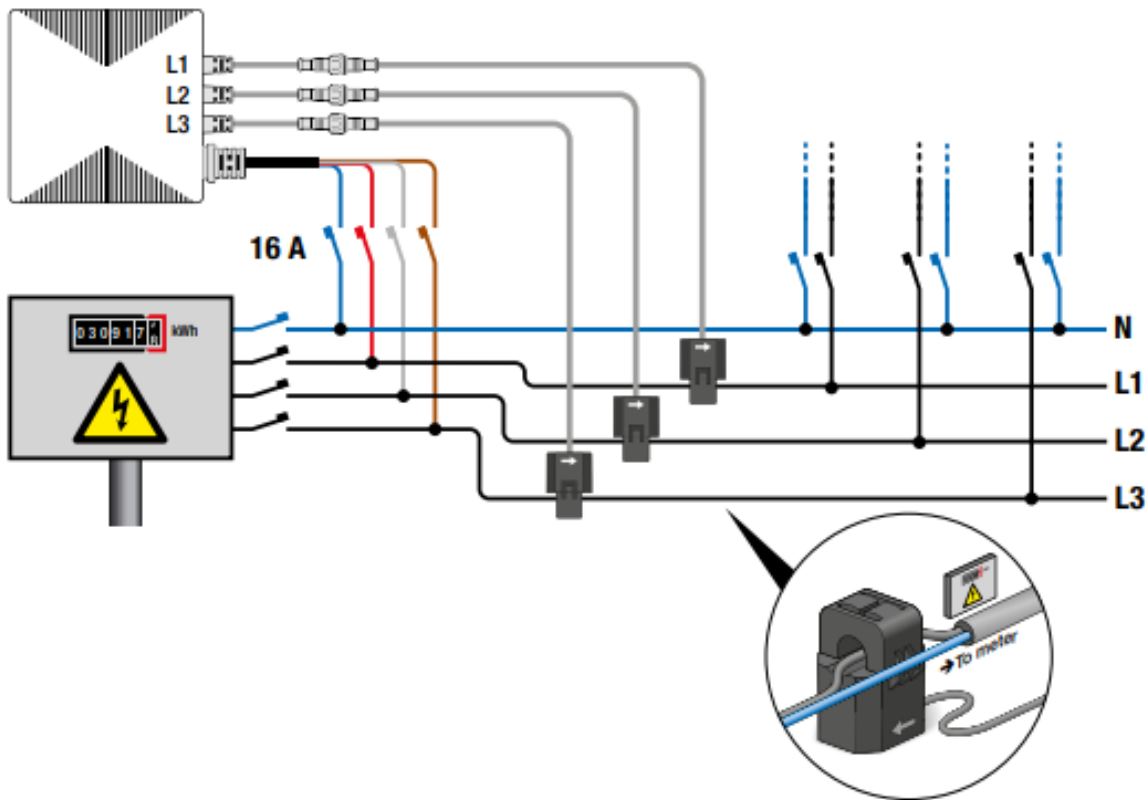
single-phase, three circuits



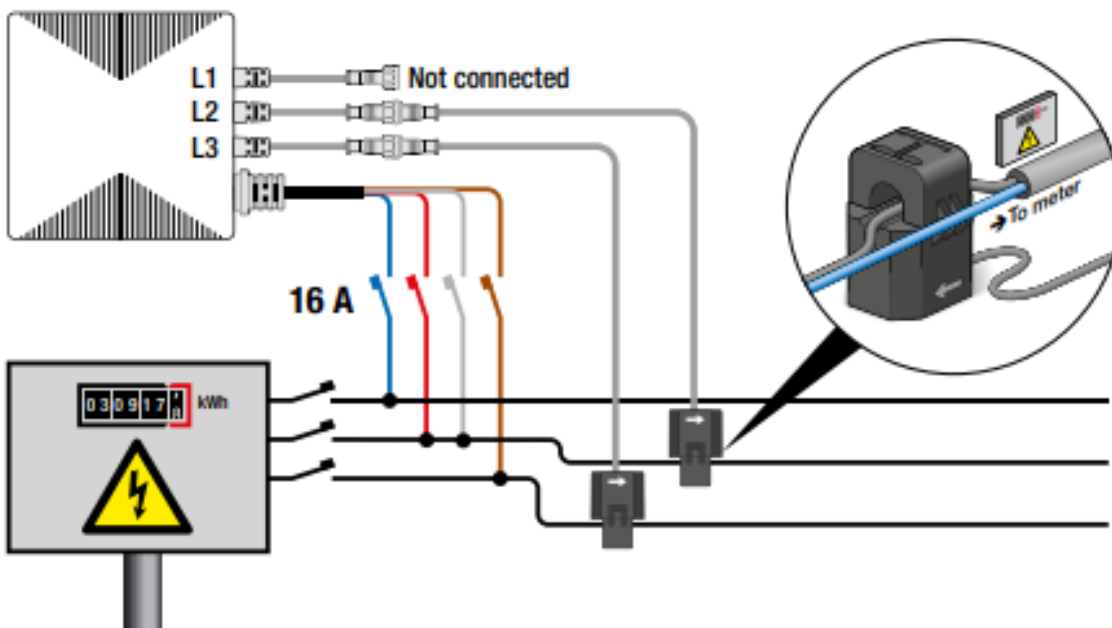
three-phase, three circuits



three-phase, 3P + N (400 Vac)

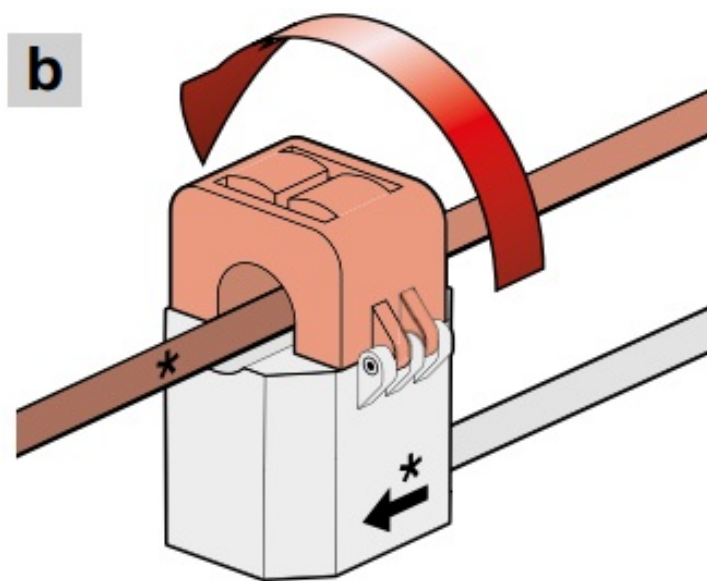
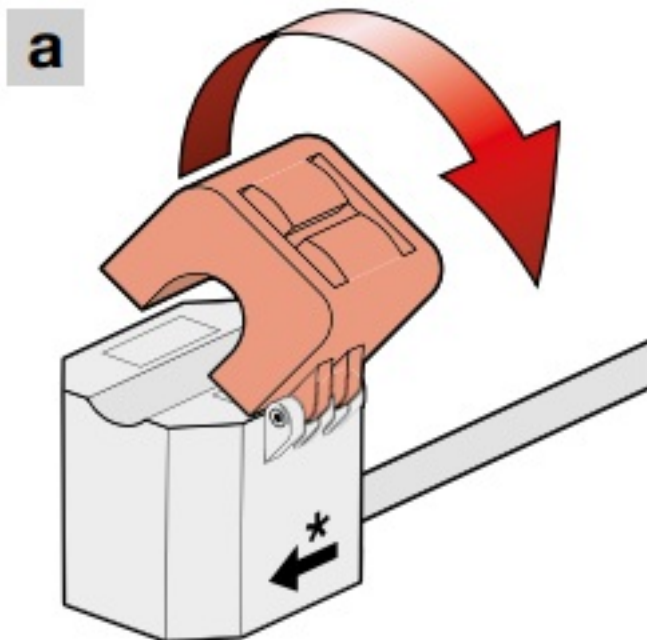


three-phase, 3P (3 x 230 Vac)

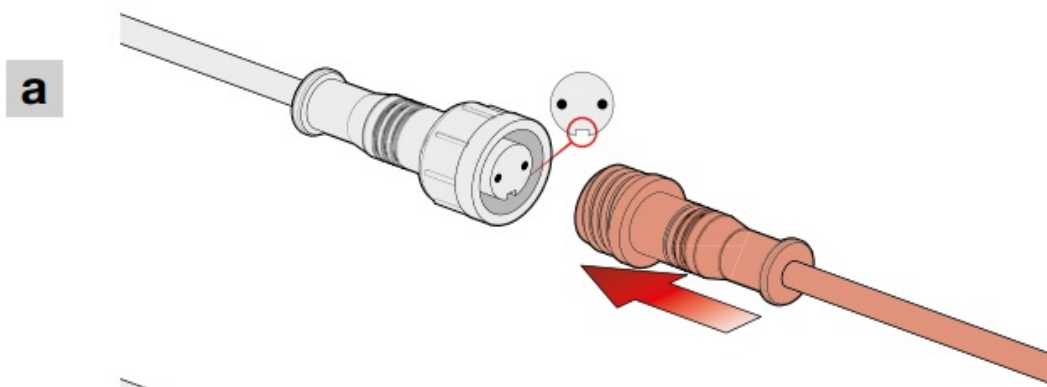


This product must be secured with a miniature circuit breaker (MCB) of max. 16 A in the electrical cabinet. The MCB rating is limited by national installation rules. Make sure to always connect the blue (N) and red (L1) wire to the same earth-leakage circuit breaker because the measuring module is powered by these wires. The cables comply with the Euroclass reaction to fire classification Eca

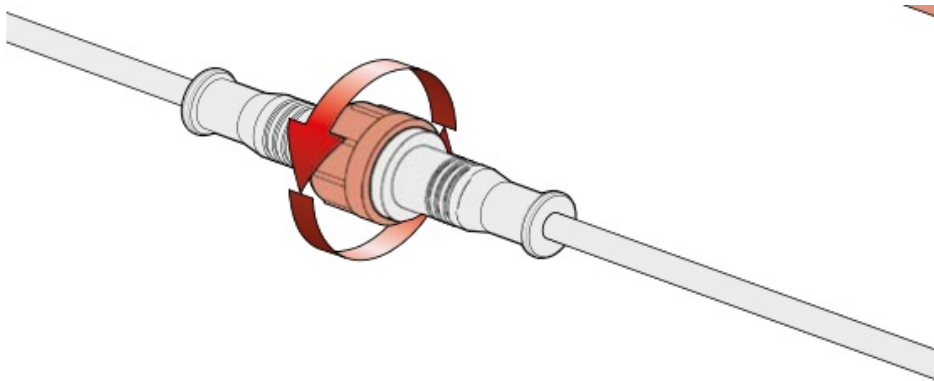
Dimensions



Mind the correct mounting direction.



b



Onboarding

The device can be onboarded via the Niko Home Control programming software.

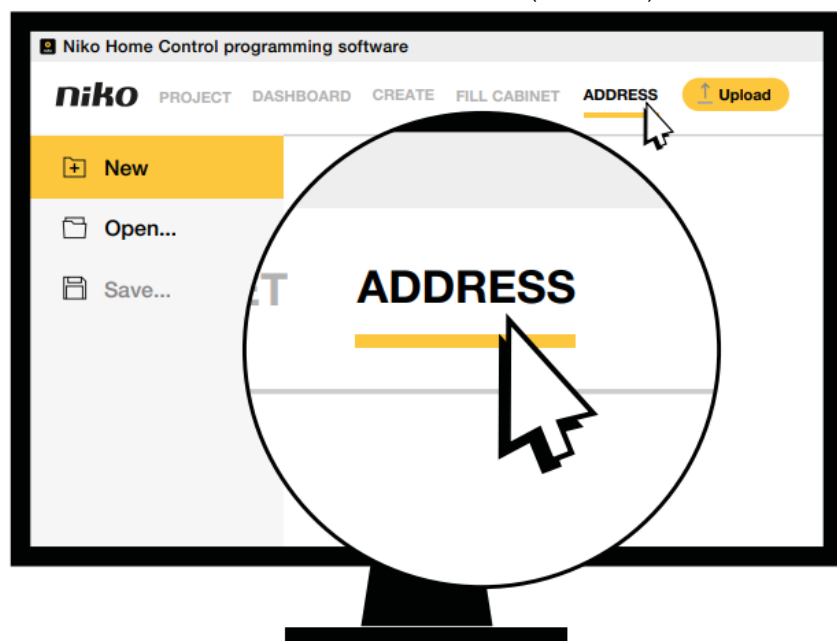
By default, the device will be in onboarding mode.

Follow the addressing instructions in the Niko Home Control programming software.

Niko Home Control programming software

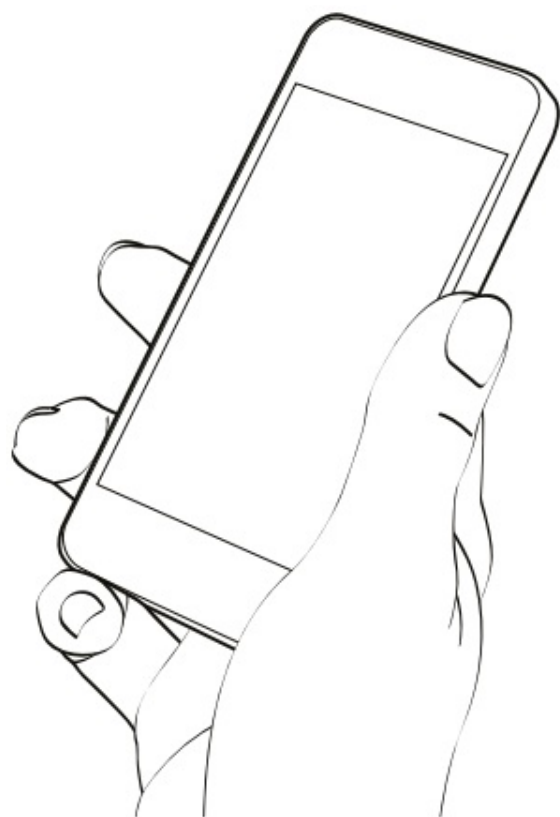


Download: www.niko.eu/article/550-99102 (Windows) www.niko.eu/article/550-99202 (Mac)





If an installation contains multiple measuring modules, ensure that only one module is powered during onboarding to avoid errors





Control

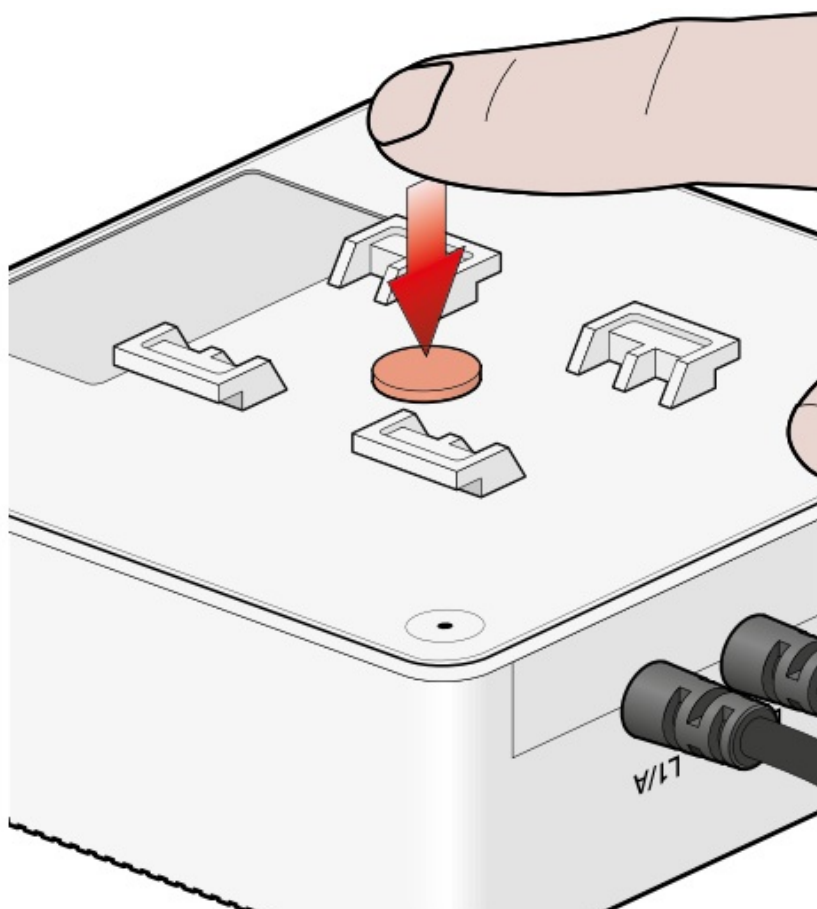


LED behaviour

Green LED flashing 3 time		The wireless measuring module is reset to its default factory settings
Red LED flashing		The wireless measuring module is ready to be added to the Niko Home Control wireless network

Reset

Step	Action	LED/led	
1	 press 10 s	 x 3	flashing
2			flashing



Online guide

Online handleiding

Consult guide.niko.eu for more information about the installation, onboarding and troubleshooting.



Specifications

Measurement range with the current clamps supplied: 0 W – 14490 W / 0.44 A – 63 A
Circuit breaker:maximum MCB rating16 A*
Maximum measurement range for the total measuring module: 3 x 14490 W
Wireless communication: 2.4 GHz IEEE 802.15.4 compatible with the mesh network ofthe wireless hub (552-00001)and wireless bridge (550-00640)
Maximum RF range: 10 m (mesh networking support for longer range)
Input voltage:230 Vac
Radio frequency power:19.5 dB
Number of current clamps:3 (included)
Maximum cable size in clamp:10 mm ²
Accuracy:> 100 W: IEC62053-21 class 2 (R), class 2 (L), 10 W < ... < 100 W: 5 %
Connection:three-phase: 3P+N (400 Vac), 50 Hz three-phase: 3P (3 x 230 Vac), 50 Hzsingle-phase: three circuits of 230 Vac, 50 Hz
Length of the connector cable at each current clamp: 90 cm
Dimensions:86(L) x 86(W) x 37(H) mm
Ambient temperature:0 – 40°C
Protection degree: IP20

The cables comply with the Euroclass reaction to fire classification Eca.
The MCB rating is limited by national installation rules.



Not suitable for measuring direct current components



Measuring data for informative purposes only, not valid for invoicing



Warnings regarding installation

The installation of products that will permanently be part of the electrical installation and which include dangerous voltages, should be carried out by a qualified installer and in accordance with the applicable regulations. This user manual must be presented to the user. It should be included in the electrical installation file and it should be passed on to any new owners. Additional copies are available on the Niko website or via Niko customer services



CE marking

This product complies with all of the relevant European guidelines and regulations. For radio equipment Niko Ilc

declares that the radio equipment in this manual conforms with the 2014/53/EU directive. The full text of the EU declaration of conformity is available at www.niko.eu under the product reference, if applicable

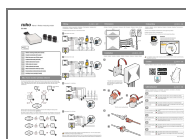
Support & contact

+32 3 778 90 80 support@niko.eu

Niko prepares its manuals with the greatest care and strives to make them as complete, correct and up to date as possible. Nevertheless, some deficiencies may subsist. Niko cannot be held responsible for this, other than within the legal limits. Please inform us of any deficiencies in the manuals by contacting Niko customer services at support@niko.eu

niko

Documents / Resources



[Niko PM552-20803 Wireless Measuring Module](#) [pdf] User Manual
PM552-20803 Wireless Measuring Module, PM552-20803, Wireless Measuring Module, Measuring Module

References

- [🌐 Confluence Mobile - Niko Guide](#)
- [🏠 Niko - home automation, switches, socket outlets and detector](#)
- [🏠 Niko Home Control II programming software for Windows](#)
- [🏠 Niko Home Control II programming software for Mac](#)
- [User Manual](#)

[Manuals+](#), [Privacy Policy](#)

This website is an independent publication and is neither affiliated with nor endorsed by any of the trademark owners. The "Bluetooth®" word mark and logos are registered trademarks owned by Bluetooth SIG, Inc. The "Wi-Fi®" word mark and logos are registered trademarks owned by the Wi-Fi Alliance. Any use of these marks on this website does not imply any affiliation with or endorsement.