



## niko 552-72101 Connected Single Switch User Manual

[Home](#) » [niko](#) » niko 552-72101 Connected Single Switch User Manual 

### Contents

- [1 niko 552-72101 Connected Single Switch](#)
- [2 Packaging content](#)
- [3 Radio specifications](#)
- [4 Dimensions](#)
- [5 Niko Home Control for traditional wiring ecosystem](#)
- [6 Minimum setup](#)
- [7 Before you get started](#)
- [8 Hardware installation](#)
- [9 Wireless smart hub](#)
- [10 Niko Home app](#)
- [11 Start using your installation](#)
- [12 Dismantling instructions](#)
- [13 Reset procedure](#)
- [14 Environment](#)
- [15 Support & contact](#)
- [16 Documents / Resources](#)
- [17 Related Posts](#)

# niko

**niko 552-72101 Connected Single Switch**



## Packaging content



connected single switch

+

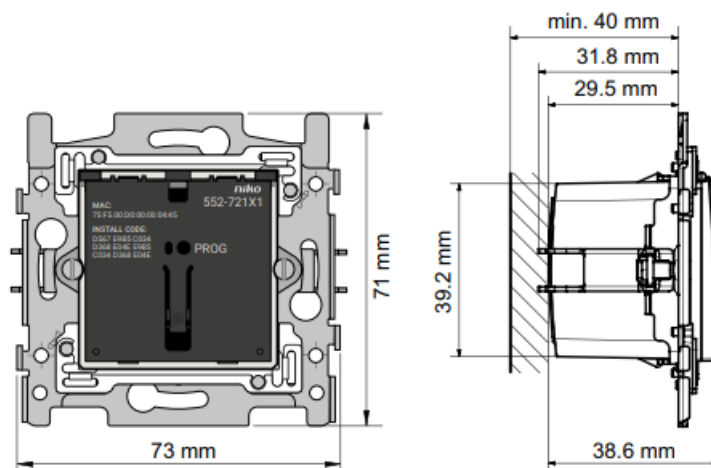


kickstarter  
manual

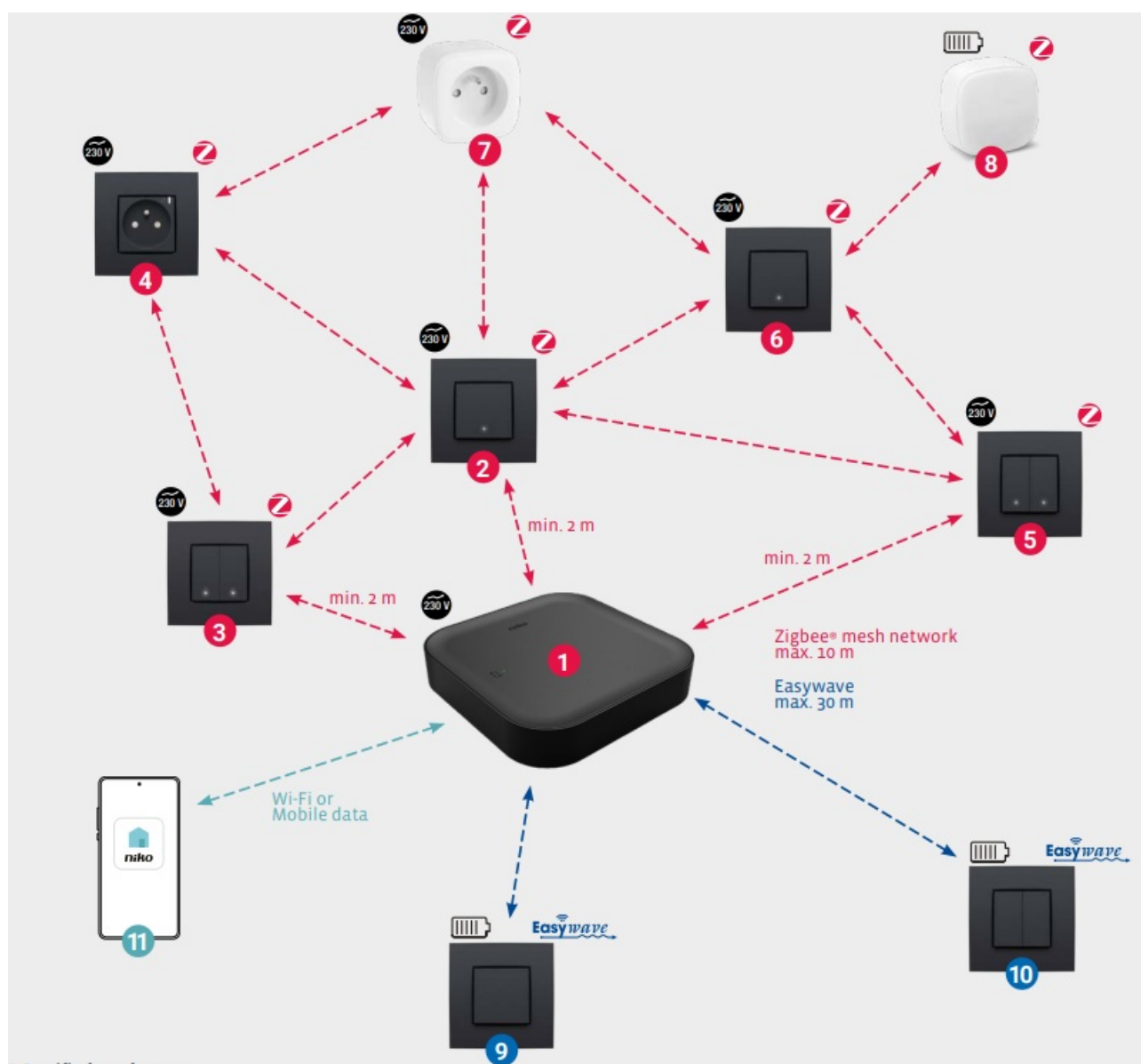
## Radio specifications

- **Operating frequency** 2.4 GHz
- **Maximum radio frequency power** 10 dBm

## Dimensions



## Niko Home Control for traditional wiring ecosystem



- **552-00001:** Wireless smart hub – recommended to install this device first
- **552-72101:** Connected single switch, Zigbee®
- **552-72102:** Connected double switch, Zigbee®
- **170-33505:** Connected switching socket outlet, Zigbee®

- **552-72301**: Connected motor control, Zigbee®
- **552-72201**: Connected dimmer, Zigbee®
- **552-80699**: Smart plug, Zigbee®
- **552-80401**: Wireless motion detector, Zigbee®
- **410-00001**: Wireless switch with 2 buttons, Easywave
- **410-00002**: Wireless switch with 4 buttons, Easywave
- Niko Home app

## Minimum setup

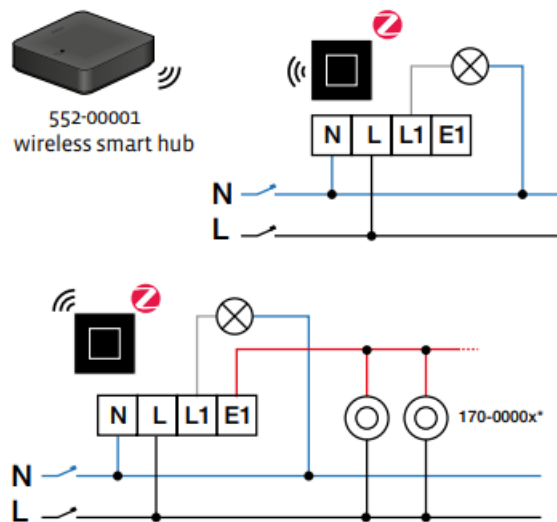


Not included, to be bought separately. Faceplates and finishing sets are available in other series and colors.

## Before you get started

- **Estimated duration:** 30 to 60 minutes
- **Tools needed:** screwdriver, cable stripper, multimeter, wire connectors and extra wiring
- **Wiring scheme**

This product must be secured with a miniature circuit breaker (MCB) of maximum 16 A in the electrical cabinet. This product must be installed in accordance with the national regulations. The Zigbee® connected single switch can be combined with mechanical push buttons. All mechanical push buttons wired to the same extension terminal, will show the same behavior (either control the lights that are directly wired to the buttons or act as programmed in the Niko Home app). It is not possible to configure the behavior of linked mechanical push buttons separately.



This product must be secured with a miniature circuit breaker (MCB) of max. 16 A in the electrical cabinet. This product must be installed in accordance with the national regulations. All mechanical push-button extensions wired to the same terminal, will show the same behavior. The maximum total wire length for all extension buttons connected to the Zigbee® switch is 50 m.

### More information

This product can be installed in different ways. Scan the QR code on page 2 to open the online manual with more detailed installation instructions, including wiring examples and programming instructions for the app.

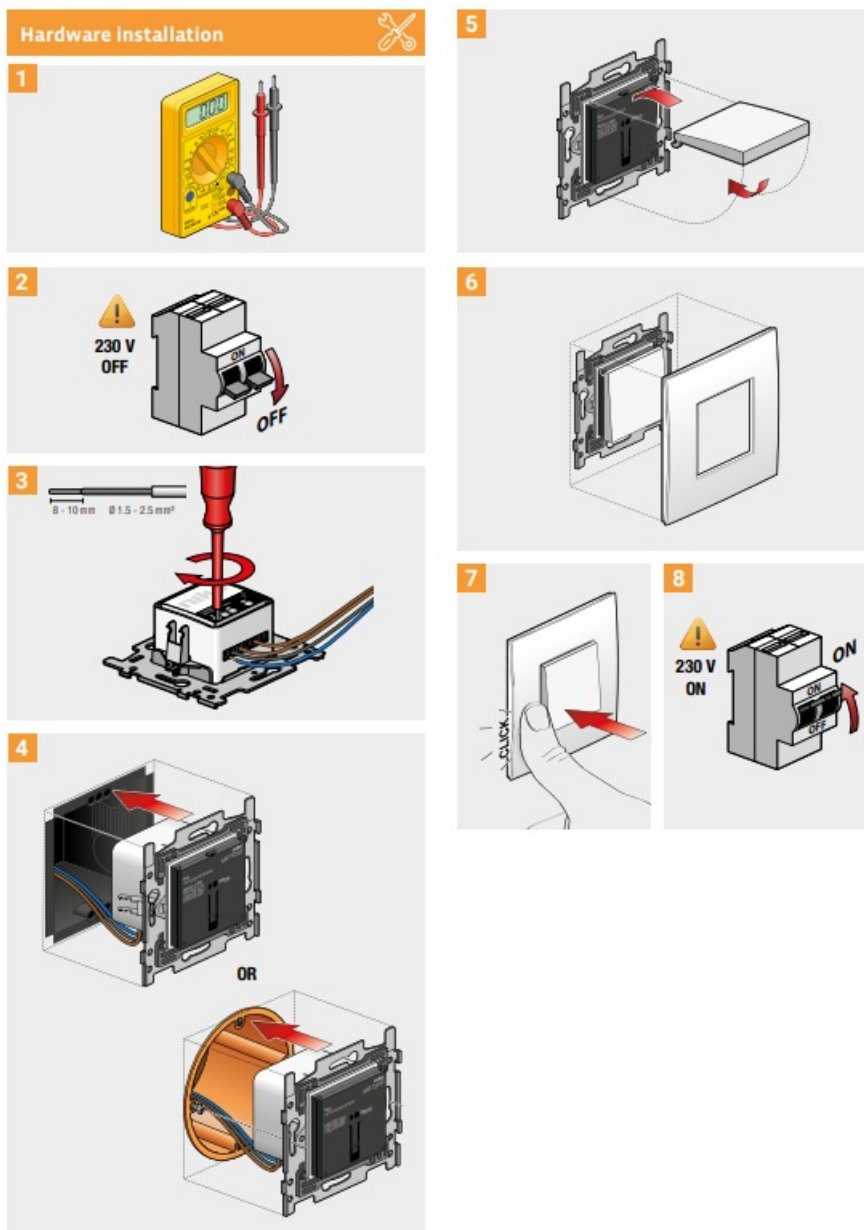
### Prerequisites

You have a modern (3- or 5-wire) electrical installation (set up after 1985). You have a wireless smart hub (552-00001) and a home network with internet connection. You have the following tools: screwdrivers, cable stripper, multimeter, wire connectors and extra wiring. Before you get up and running, it is recommended to check the website page on the Niko Home Control for traditional wiring ecosystem. You can access this page by scanning the QR code on page 1.

### Difficulty level

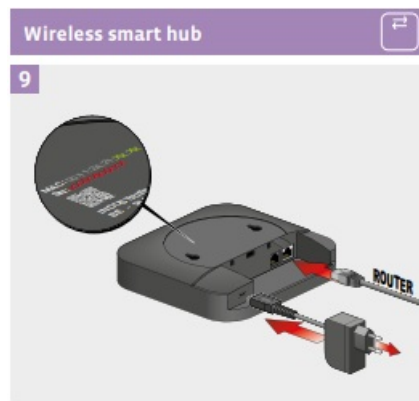
Technical background knowledge is required to install hardware: you are able to interpret the AREI regulations and you have a good understanding of the electrical wiring in your home.

### Hardware installation



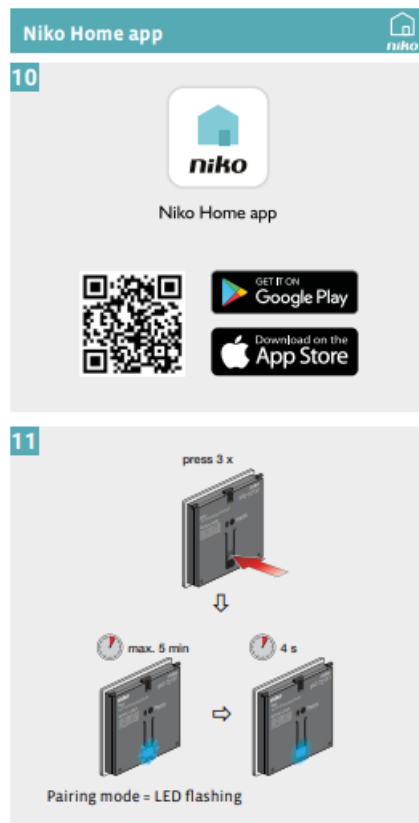
1. Map out the existing wiring (using a multimeter) and label the wires for later reference.
2. Switch off the miniature circuit breaker (MCB) for the circuit you are about to work on and use a multimeter to ensure that no wires are live.
3. Connect the wiring following the wiring scheme on page 2. Scan the QR code located above to view more detailed wiring examples.
4. Mount the switch in the wall-mounting box. To install the switch in a box in a timber wall, remove the claws and use screws to fix it instead.
5. Mount a finishing set (to be bought separately) on the base of the switch.
6. Add a faceplate (to be bought separately).
7. Secure the faceplate by clicking it onto the base of the switch.
8. Switch the miniature circuit breaker (MCB) back on. Test your installation to ensure that the connected switch (and the mechanical push buttons) operates the lighting as intended.

## Wireless smart hub



- **9** If you did not yet do so , install and register the wireless smart hub (552-00001). Follow the instructions in the accompanying manual.

## Niko Home app



- **10** Download and install the Niko Home app on your smartphone. Log in and, if prompted, upgrade your Niko Home Control installation.
- **11** Follow the instructions in the app to add the connected switch to your installation. When prompted, press the button on the switch 3 times consecutively. When prompted by the app, repeat this process for all mechanical push buttons wired to the extension terminal of your connected device.

## Start using your installation

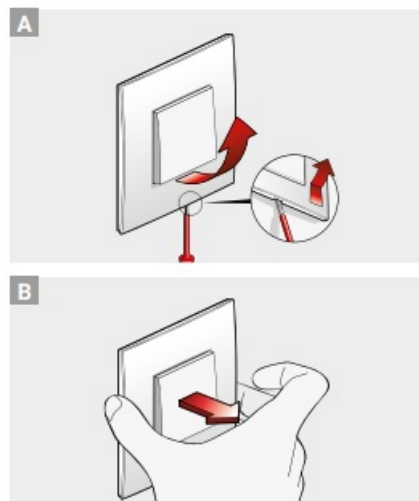


12



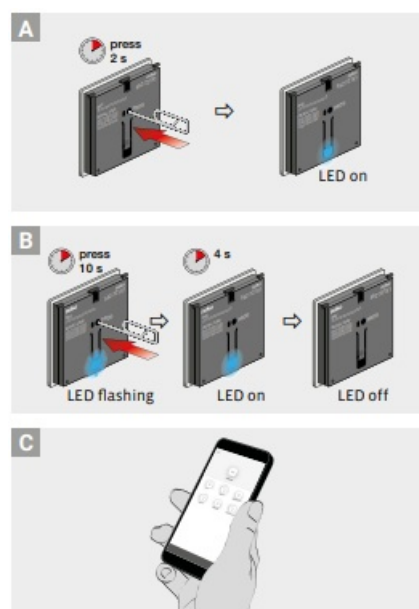
- **12** Start using your Niko Home Control installation. Use the app to give your devices another function or to program a routine. Check the online manual and ecosystem to get inspired.

## Dismantling instructions



- A Use a small screwdriver to lift the bottom of the faceplate.
- B Remove the faceplate and finishing set.

## Reset procedure





- A Use a paper clip or the tip of a ballpoint pen to press and hold the PROG button for 2 seconds. The blue LED turns on.
- B Press and hold the PROG button for about 10 seconds until the blue LED starts flashing. The blue LED turns on for 4 seconds and then turns off. The device is now disconnected from the smart hub.
- C Locate the device in the Niko Home app. Select the pencil icon to start editing and subsequently choose Remove control.

## Environment

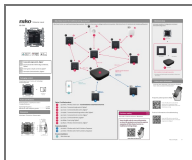
This product and/or the batteries provided cannot be disposed of in the non-recyclable waste. Take your discarded product to a recognized collection point. Just like producers and importers, you too play an important role in the promotion of sorting, recycling and reuse of discarded electrical and electronic equipment. To finance rubbish collection and waste treatment, the government levies recycling charges in certain cases (included in the price of this product).

## Support & contact

nv Niko sa  
 Industriepark West 40 9100 Sint-Niklaas, Belgium  
 +32 3 778 90 80  
[support@niko.eu](mailto:support@niko.eu)  
[www.niko.eu](http://www.niko.eu)

Niko prepares its manuals with the greatest care and strives to make them as complete, correct and up-to-date as possible. Nevertheless, some deficiencies may subsist. Niko cannot be held responsible for this, other than within the legal limits. Please inform us of any deficiencies in the manuals by contacting Niko customer services at [support@niko.eu](mailto:support@niko.eu).

## Documents / Resources



[niko 552-72101 Connected Single Switch](#) [pdf] User Manual  
 PH552-72101, 552-72101 Connected Single Switch, 552-72101, Connected Single Switch, Single Switch, Switch