



niko 552-720×2 Wireless Battery-Powered Switch Twofold Zigbee User Manual

[Home](#) » [niko](#) » niko 552-720×2 Wireless Battery-Powered Switch Twofold Zigbee User Manual 

Contents

- [1 niko 552-720×2 Wireless Battery-Powered Switch Twofold Zigbee](#)
- [2 Product Information](#)
- [3 Product Usage Instructions](#)
- [4 Description](#)
- [5 Dimensions](#)
- [6 Zigbee® network](#)
- [7 Installation](#)
- [8 Battery replacement](#)
- [9 Stand-alone use](#)
- [10 Connected use](#)
- [11 Online guide](#)
- [12 Troubleshooting](#)
- [13 LED behavior](#)
- [14 Reset](#)
- [15 Specifications](#)
- [16 Support & contact](#)
- [17 Documents / Resources](#)
 - [17.1 References](#)
- [18 Related Posts](#)

niko

niko 552-720×2 Wireless Battery-Powered Switch Twofold Zigbee



Product Information

- **Product Name:** Manual 552-720X2
- **Description:** Niko Original, Niko Intense, Niko Pure
- **Dimensions:** 71 mm x 10 mm x 47 mm
- **Compatibility:** Compatible with Niko Home Control installation
- **Power Supply:** 230 V
- **Max Range:** 10 m (stand-alone use), 30 m (connected use)
- **Battery:** Replaceable (refer to battery replacement instructions)

Product Usage Instructions

1. Connected Use:

- Connect the device to your wireless smart hub (552-00001) or wireless bridge (550-00640) using the Niko Home Control programming software or Niko Home app. More advanced functionalities become available when connected.
- Download the Niko Home Control programming software from the following links:
 - [Windows](#)
 - [Mac](#)
- Control your device with the Niko Home app.
- Perform EZ-mode pairing by following these steps:
 1. Press the button on the device once.
 2. Press the button three times within 90 seconds.
 3. Hold the button for 4 seconds until the LED starts flashing.
 4. Press the button twice within 4 seconds.
 5. Hold the button for 4 seconds until the LED turns on.
 6. The device is now paired and ready to use.

2. Stand-alone Use:

- Place the device within 10 cm of the receiver.
- Ensure the switch is not obstructed and within range of the receiver's radio signal.
- If the receiver does not respond, check if the battery is drained and replace it if necessary (refer to battery replacement instructions).

3. Troubleshooting:

- If the connected switch cannot be found in the Niko Home Control app, make sure the power supply of the wireless smart hub is turned on.
- If the receiver switch does not respond, check if it was paired correctly with the receiver. Move closer to the receiver or use a range extender if needed.
- If the receiver switch is sometimes moved outside the range or obstructed, consider using a range extender or integrating with a third-party system.

Additional Resources

- [Online Guide](#)

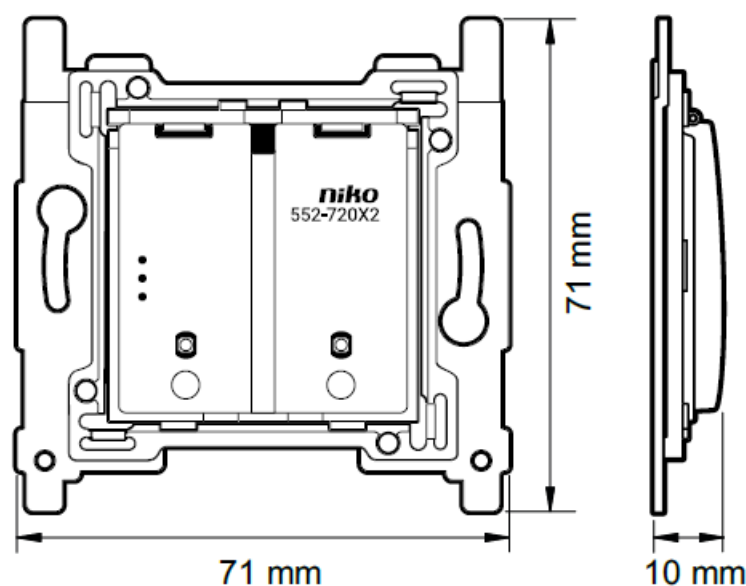
Wireless battery-powered switch, twofold, Zigbee®

Description

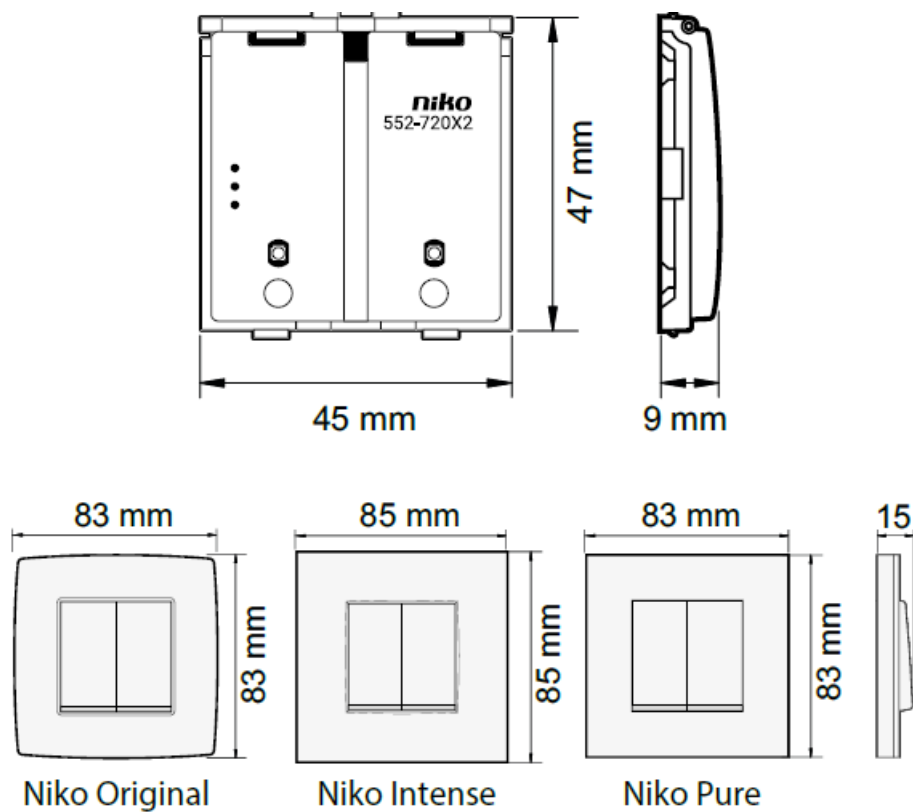
This twofold wireless battery-powered Zigbee® switch allows you to remotely control wireless Zigbee® devices. It can either be used in a Niko Home Control installation (max. fifty Zigbee® devices) or connected to a third-party Zigbee® system as a standard dimmer switch (ON/OFF/ dimming) via EZ-mode pairing. The switch also supports Touchlink or Find&Bind to pair with up to eight Zigbee® receivers (ON/OFF/dimming) for stand-alone use or decentral networks. The wireless Zigbee® switch is battery powered with a lifetime of at least five years, based on twenty short press actuations a day. The variant with a plastic baseplate (552-72002) is used for wall installation. Fixation is possible with double-sided adhesive tape (included) or screws (excluded). For flush-mounting box installation, use variant 552-72012 together with the metal baseplate (552-720X0) suitable for your region.

Dimensions

552-72002

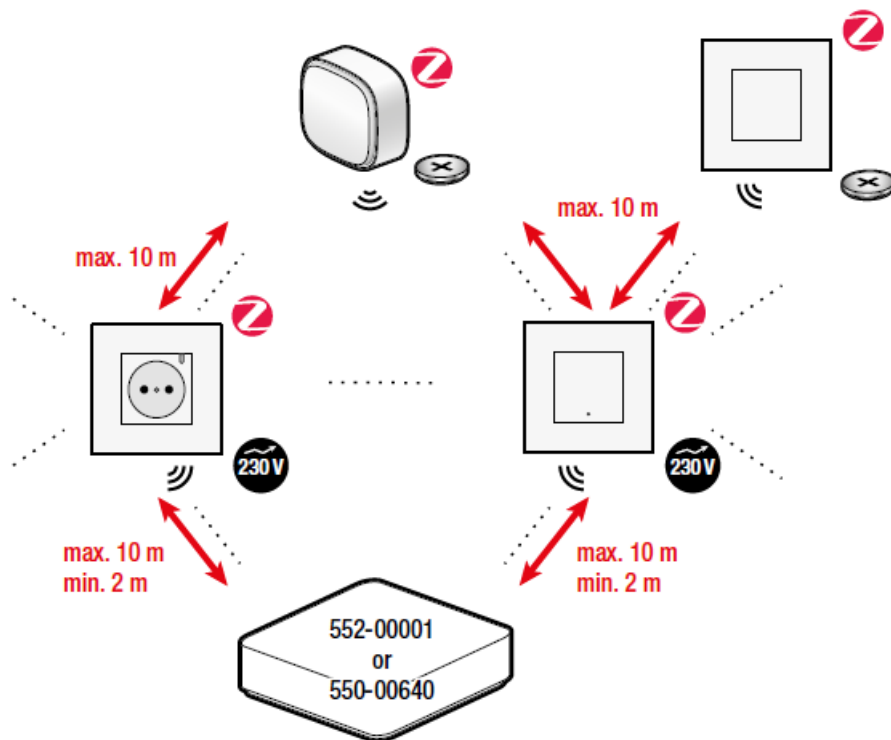


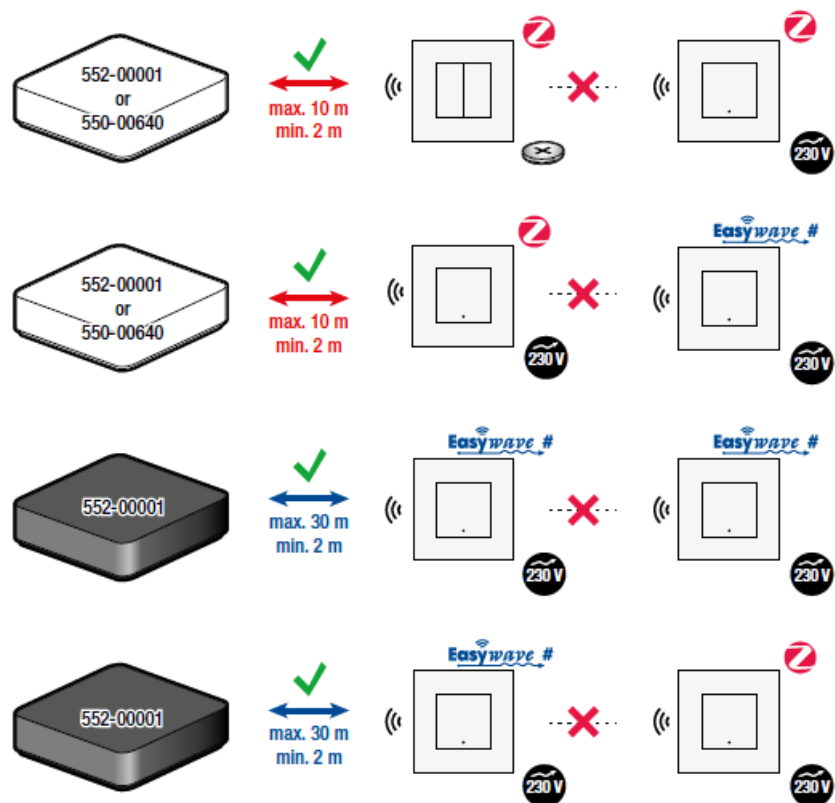
552-72012



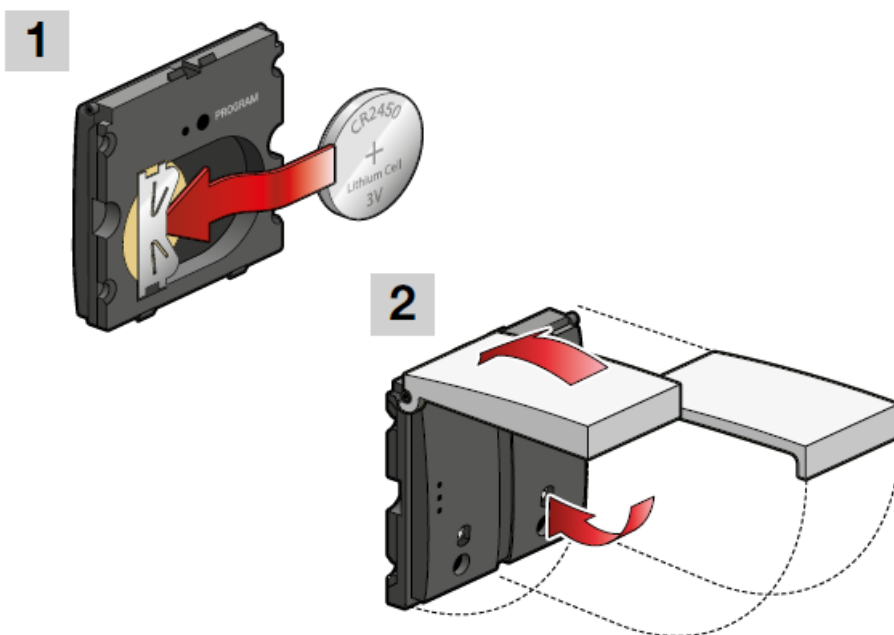
Zigbee® network

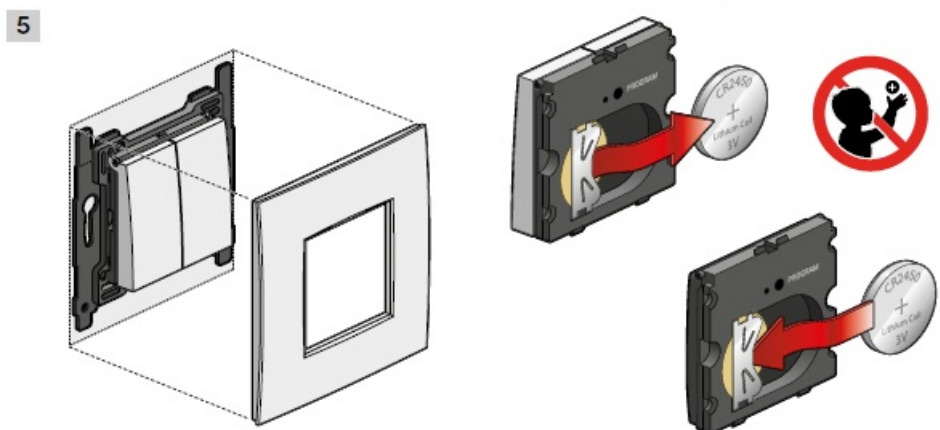
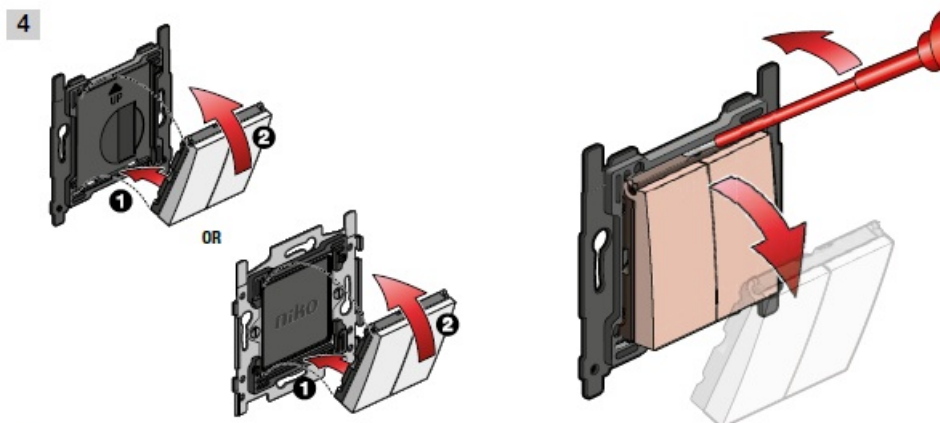
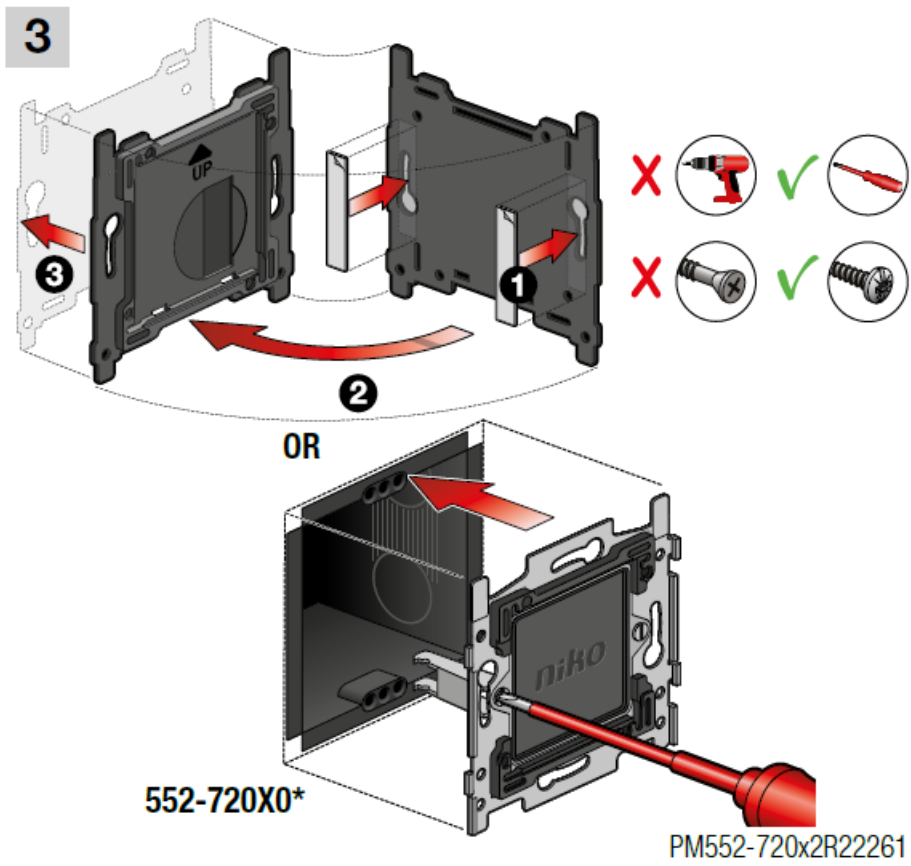
Install the twofold wireless battery powered Zigbee® switch within 10 m of a Zigbee® receiver. Battery-powered Zigbee® devices act as endpoints and do not support Zigbee® mesh networking. For more information on Zigbee® network principles and signal range, consult guide.niko.eu.



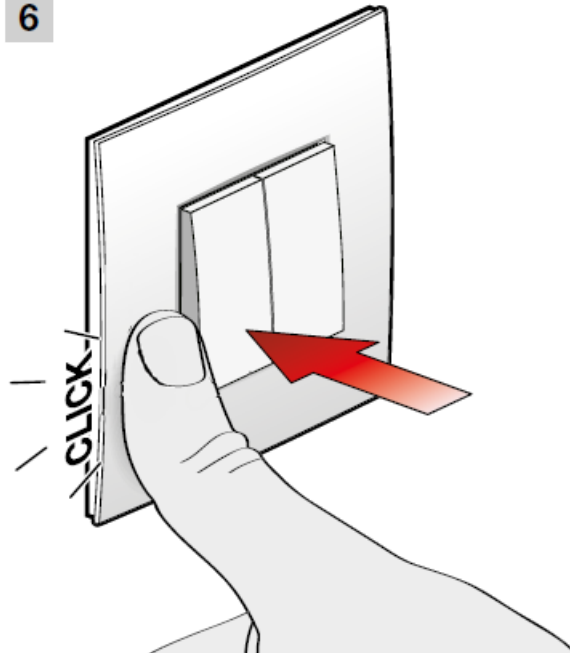


Installation

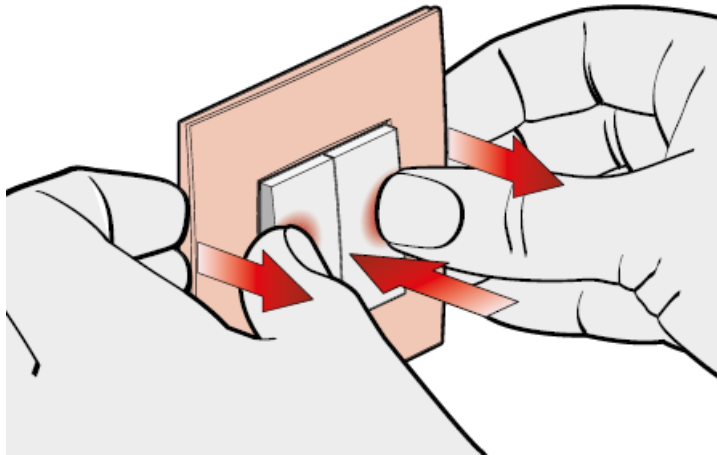




6



Battery replacement



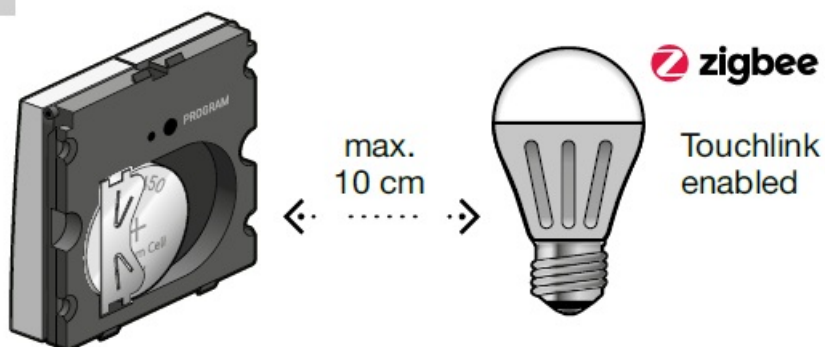
Stand-alone use

The twofold wireless battery-powered Zigbee® switch (522-720X2) can be used in stand-alone mode without a gateway. In this mode, each control button can be paired with Zigbee® receivers (ON/OFF/dimming). The twofold switch can be paired with up to eight Zigbee® receivers in total, such as a smart Zigbee® 3.0 lamp. Pairing is done via Touchlink or Find&Bind.

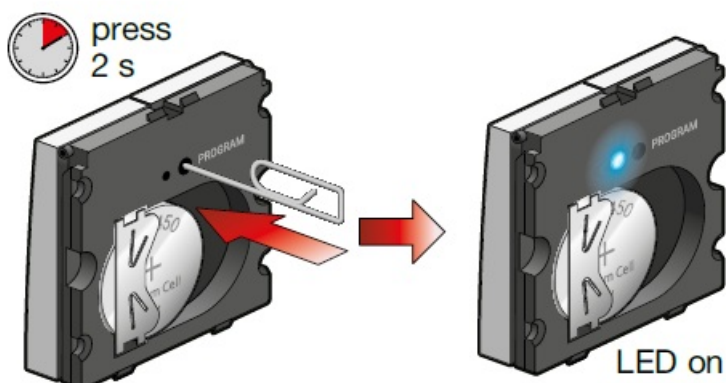
Touchlink pairing

Reset all Zigbee® devices if they were previously connected to another Zigbee® network. See § Reset.
For Find&Bind pairing consult guide.niko.eu

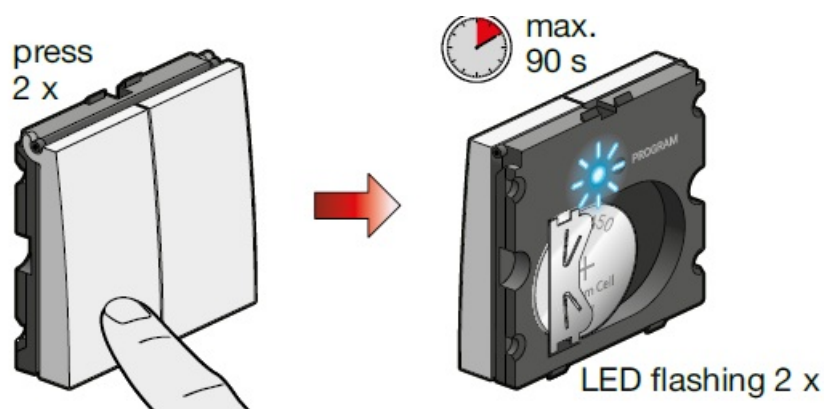
1



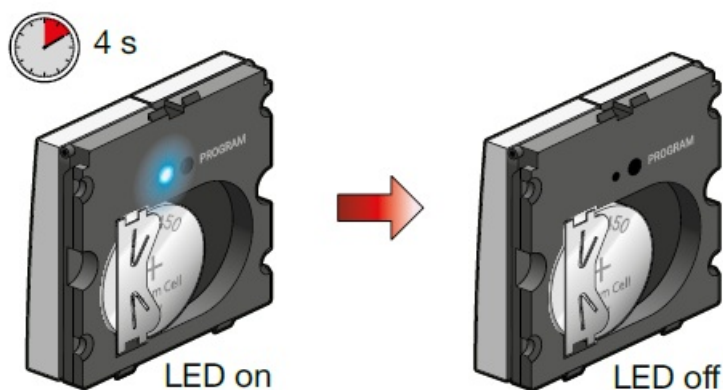
2



3



4



Connected use

More advanced functionalities become available if you connect this device to your wireless smart hub (552-00001) or wireless bridge (550-00640) using the Niko Home Control programming software or Niko Home app. Consult guide.niko.eu for more information about the installation and the connected use.

Download the Niko Home Control programming software
www.niko.eu/article/550-99102 (Windows)



Niko Home Control programming software

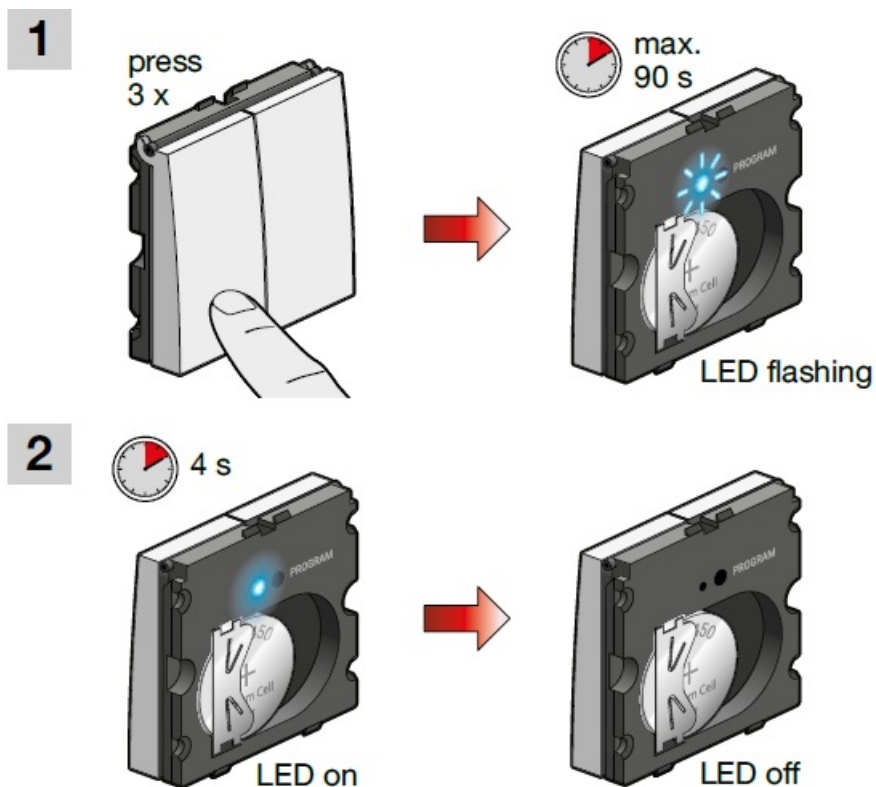


Control your device with the Niko Home app

How to connect the Niko device to the Niko Home Control network

1. Reset the Niko Zigbee® device if it is already connected to another network. See § Reset.
2. Follow the onboarding procedure in the Niko Home Control programming software or the Niko Home app to add new Niko Zigbee® devices
3. Set the Niko Zigbee® device in EZ-mode by pressing on of the switch buttons 3 x within 6 seconds > see the image on 'EZ-mode pairing'. The blue PROGRAM LED starts blinking for max. 90 seconds
4. The Zigbee® device is successfully added to the Niko Home Control installation when the blue PROGRAM LED is ON for 4 seconds and then turns OFF again.

EZ-mode pairing



Connected to a third-party Zigbee® network

The twofold wireless battery-powered Zigbee® switch can be connected to a third-party network via EZ-mode pairing. Refer to the third-party software or smartphone app to link a specific button of the battery-powered Zigbee® switch to an actor within the third-party network. You can also use Find&Bind pairing. Consult guide.niko.eu and the manufacturer's manual for more information on using third-party Zigbee® devices in their network. Note that specific Niko Home Control functions will not be enabled when Niko Zigbee® devices are connected to a third-party Zigbee® gateway. See also the disclaimer at <http://www.niko.eu/zigbee>

Online guide

Consult guide.niko.eu for more information about the installation, onboarding, the stand-alone/connected use and troubleshooting.








guide.niko.eu

Troubleshooting

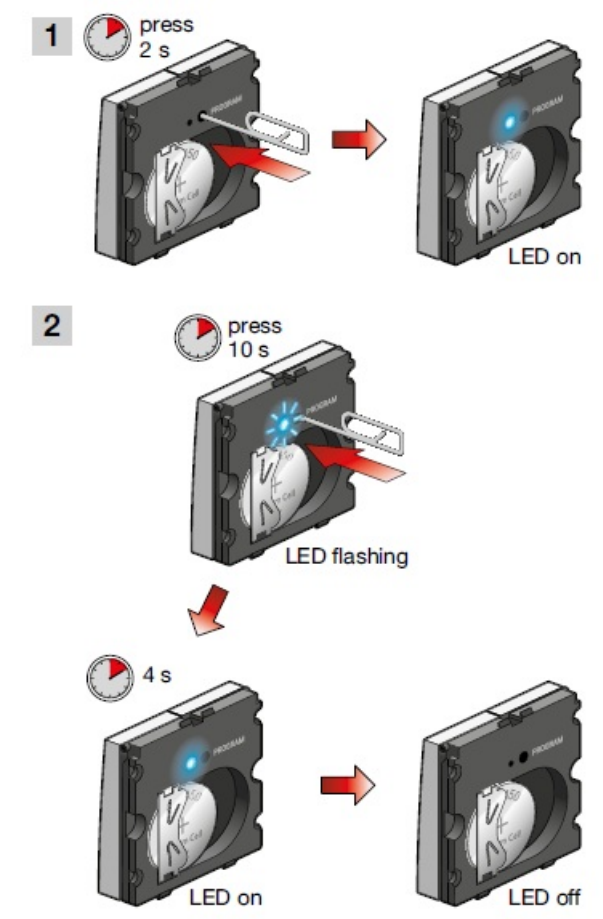
Problem	Cause	Action
---------	-------	--------

The connected switch cannot be found in the Niko Home app or programming software	The power supply of the wireless smart hub for Niko Home Control is OFF	Switch on the power supply of the wireless smart hub for Niko Home Control
	The battery of the Zigbee® switch is drained	A battery low warning is displayed on the Niko Home Control Home app. A battery low indication (red-coloured LED) will only be shown on the Zigbee® device after a long press on the PROGRAM button (see § Reset). Replace the coin cell battery (refer to § Battery replacement). Mind that the PROGRAM LED remains OFF when the battery voltage level is below the minimum threshold
The receiver never responds when I press a Zigbee® switch button in stand-alone use	The battery of the Zigbee® switch is drained	
	The Zigbee® switch is not correctly paired with the receiver	Reset the Zigbee® battery-powered switch if it was paired to another Zigbee® network. Pair the switch to a stand-alone receiver, Niko Home Control, or a third-party Zigbee® network. See guide. niko.eu for more details
	Another Zigbee® battery-powered switch is paired with the receiver	
	The Zigbee® battery-powered switch is mounted outside of the receiver's radio coverage or is sometimes moved outside the range	Move the Niko Zigbee® switch closer to the receiver or use a range extender such as a 230 V powered Zigbee® 3.0 device in a Niko Home Control installation or third-party system
	The radio path is obstructed, which attenuates the radio signal	Reposition the Zigbee® switch or use a range extender such as a 230 V powered Zigbee® 3.0 device in a Niko Home Control installation or third-party system
	A jammer or a source of interference is blocking the telegrams from the Zigbee® battery-powered switch to the receiver	Reposition the Zigbee® switch or Zigbee® receiver. Remove the interfering device or use a range extender such as a 230 V powered Zigbee® 3.0 device in a Niko Home Control installation or third-party system
	The Zigbee® battery-powered switch is defective	Replace the switch and pair the new Zigbee® battery-powered switch with the receiver. Both devices may have to be reset first
	The receiver is defective	Replace the receiver and pair it with the new Zigbee® receiver
The receiver doesn't always respond when I press the Niko Zigbee® battery-powered switch	The receiver is located at the border of the radio coverage area	Install the switch closer to the receiver or use a range extender such as a 230 V powered Zigbee® 3.0 device in a Niko Home Control installation or third-party system
	A jammer or a source of interference is blocking the telegrams from the Niko Zigbee® battery-powered switch to the receiver	Reposition the Zigbee® switch or receiver, remove the interfering device or use a range extender such as a 230 V powered Zigbee® 3.0 device in a Niko Home Control installation or third-party system

LED behavior

PROGRAM LED is OFF		The PROGRAM button is not pressed (correctly), or the battery is empty	Press the PROGRAM button long enough or replace the coin cell battery. The PROGRAM LED is not active during normal operation
PROGRAM LED is flashing blue	 	The switch is trying to connect to the Zigbee® network. The battery level is sufficiently high	Wait until the LED stops flashing, which can take up to 90 seconds. The blinking frequency depends on the pairing method: <ul style="list-style-type: none"> • repeated 1 x: EZ-mode pairing (Niko Home Control or third-party network) • repeated 2 x: Touchlink pairing • repeated 4 x: Find& Bind pairing A flashing red LED also indicates a low battery level
PROGRAM LED is blue for 4 seconds	 	The wireless battery-powered Zigbee® switch is connected to the Zigbee® network, and the battery level is sufficiently high	The PROGRAM LED will switch OFF after 4 seconds. The wireless battery-powered Zigbee® switch is ready to be used. A red LED also indicates a low battery level
PROGRAM LED is flashing red			
PROGRAM LED is permanently red		A red LED indicates that the battery level is low. See above for more information on the difference between a flashing LED and a LED that is permanently ON	Replace the coin cell battery. The red LED is not active during normal operation and remains OFF when the battery voltage level is too low

Reset



Specifications

- Article number.....552-721X2
- Power supply..... 3 V battery, CR2450
- Battery life span..... 5 years at 20 actuations/day
- Protocol..... Zigbee® 3.0, 2.4 GHz
- Mounting method 552-72002.....wall mounting
- Mounting method 552-72012..flush-mounting box in combination with metal baseplate 552-720X0
- Flush-mounting box specifications..... depth = min. 40 mm
.....claw/screw fixing = 60 mm
.....inner diameter box = 60 mm
.....multiple boxes centre distance horizontal = 71 mm
..... multiple boxes centre distance vertical = 71 mm
.....multiple boxes centre distance vertical = 60 mm for BE and FR
- Mounting height..... 105 – 120 cm
- Dimensions with Niko Original or Niko Pure faceplate (HxWxD)
..... 83 x 83 x 15 mm
- Dimensions with Niko Intense faceplate (HxWxD)
..... 85 x 85 x 15 mm
- Protection degree.....IP20
- Maximum range (between switch and smart hub or wireless bridge) 10 m
(longer ranges possible withmeshing capability of 230 V connected Zigbee® devices)
- Maximum per installation max. 50 connected Zigbee® devices per
..... Niko Home Control installation

-stand-alone: max. 8 Zigbee®
-ON/OFF/dimmable actuators per switch
- Operating frequency.....2.4 GHz
- Antenna..... integrated antenna
- Maximum RF power.....8 dBm EIRP
- Ambient temperature operation.....5 °C – 30 °C
- Ambient temperature storage.....0 °C – 40 °C
- Humidity..... 0 – 95 % relative humidity, non-condensing
- Weight 552-72002..... 23 g ±1 g
- Weight 552-72012..... 17 g ±1 g
- Marking..... CE, Zigbee

Warnings regarding installation

The installation of products that will permanently be part of the electrical installation and which include dangerous voltages, should be carried out by a qualified installer and in accordance with the applicable regulations. This user manual must be presented to the user. It should be included in the electrical installation file and it should be passed on to any new owners. Additional copies are available on the Niko website or via Niko customer services.

Support & contact

nv Niko sa
 Industriepark West 40
 9100 Sint-Niklaas, Belgium
www.niko.eu
 EN +32 3 778 90 80 support@niko.eu
 NL België: +32 3 778 90 80
Nederland: +31 880 15 96 10
support.be@niko.eu
support.nl@niko.eu

FR

Belgique: +32 3 778 90 80
France: +33 820 20 66 25
Suisse: +41 44 878 22 22
support.be@niko.eu
support.fr@niko.eu
support.ch@niko.eu

DE

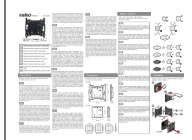
Deutschland: +49 7623 96697-0
Schweiz: +41 44 878 22 22
Österreich: +43 1 7965514
Belgien: +32 3 778 90 80
support.de@niko.eu
support.ch@niko.eu
support.at@niko.eu
support.be@niko.eu

DK +45 74 42 47 26 support.dk@niko.eu
 SE +46 8 410 200 15 support.se@niko.eu
 NO +47 66 77 57 50 support.no@niko.eu
 IT +41 44 878 22 22 support.ch@niko.eu
 PL +48 509 378 373 support.pl@niko.eu
 SK +421 2 63 825 155 support.sk@niko.eu

Niko prepares its manuals with the greatest care and strives to make them as complete, correct and up-to-date as

possible. Nevertheless, some deficiencies may subsist. Niko cannot be held responsible for this, other than within the legal limits. Please inform us of any deficiencies in the manuals by contacting Niko customer services at support@niko.eu

Documents / Resources



[niko 552-720x2 Wireless Battery-Powered Switch Twofold Zigbee](#) [pdf] User Manual
552-720x2 Wireless Battery-Powered Switch Twofold Zigbee, 552-720x2, Wireless Battery-Powered Switch Twofold Zigbee, Powered Switch Twofold Zigbee, Switch Twofold Zigbee

References

- [✖ Confluence Mobile - Niko Guide](#)
- [n Niko - home automation, switches, socket outlets and detector](#)
- [n Zigbee](#)
- [n Niko - home automation, switches, socket outlets and detector](#)
- [n Niko Home Control II programming software for Windows](#)
- [n Niko Home Control II programming software for Mac](#)
- [n Zigbee](#)