

niko 101-72311-41 Zigbee Connected Motor Control Instruction Manual

[Home](#) » [niko](#) » niko 101-72311-41 Zigbee Connected Motor Control Instruction Manual 



101-72311-41 Zigbee Connected Motor Control Instruction Manual



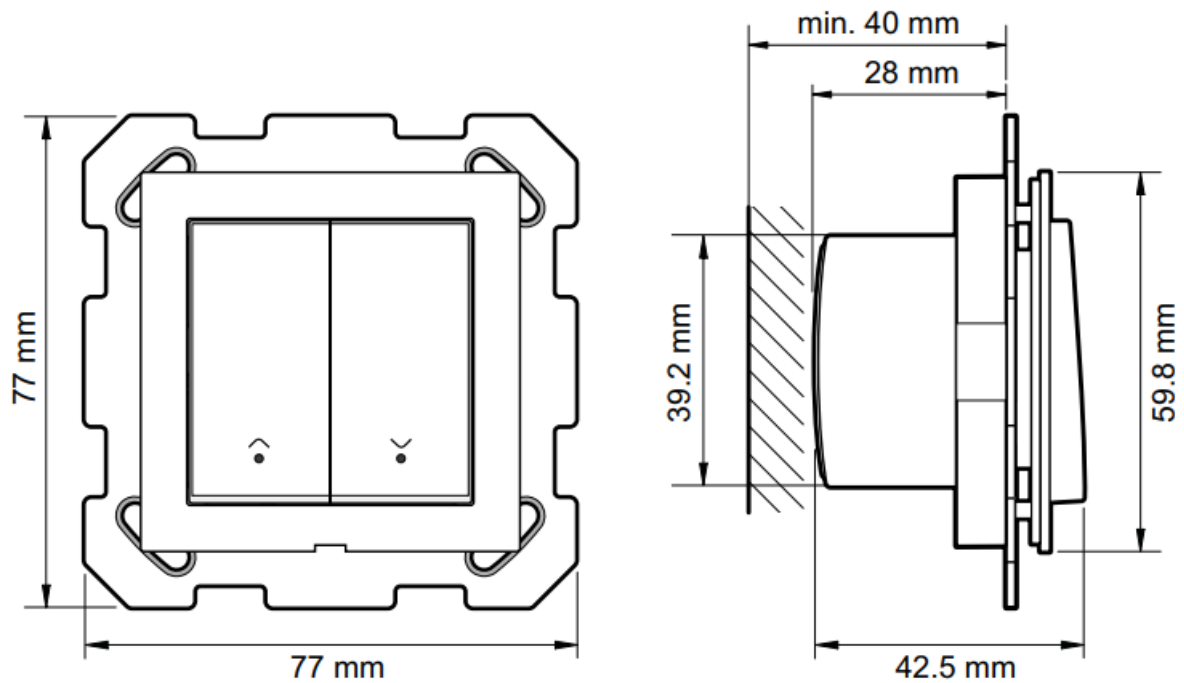
Niko Home Control
4 year warranty

Connected motor control, Zigbee®, Swiss line

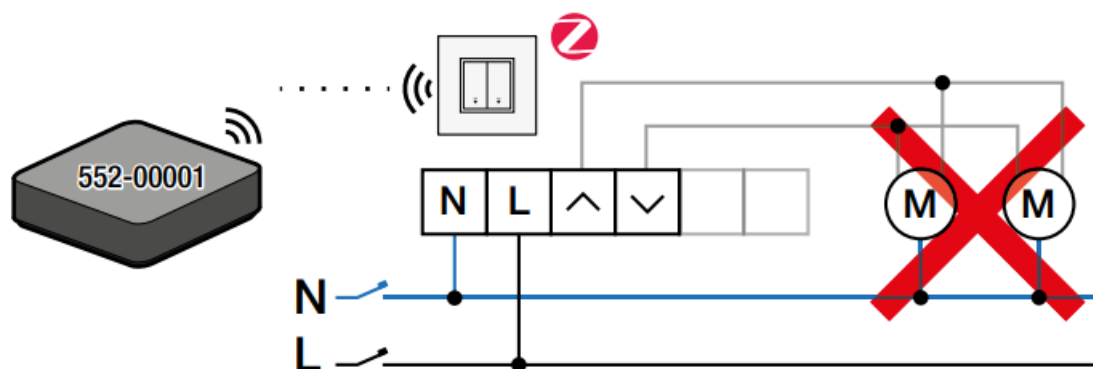
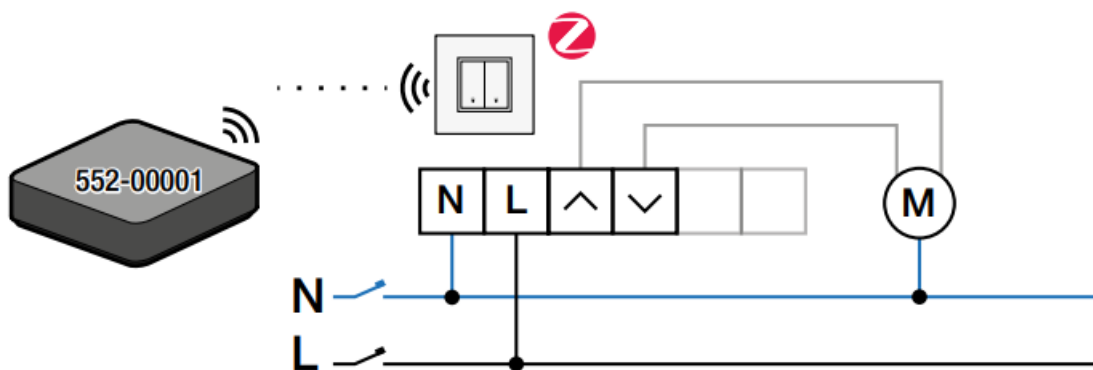
Contents

- [1 Dimensions](#)
- [2 Zigbee® network](#)
- [3 Installation](#)
- [4 Connected use](#)
- [5 Control](#)
- [6 Troubleshooting](#)
- [7 Reset](#)
- [8 Specifications](#)
- [9 Support & contact](#)
- [10 Documents / Resources](#)
 - [10.1 References](#)
- [11 Related Posts](#)

Dimensions



Wiring
230 V – OFF

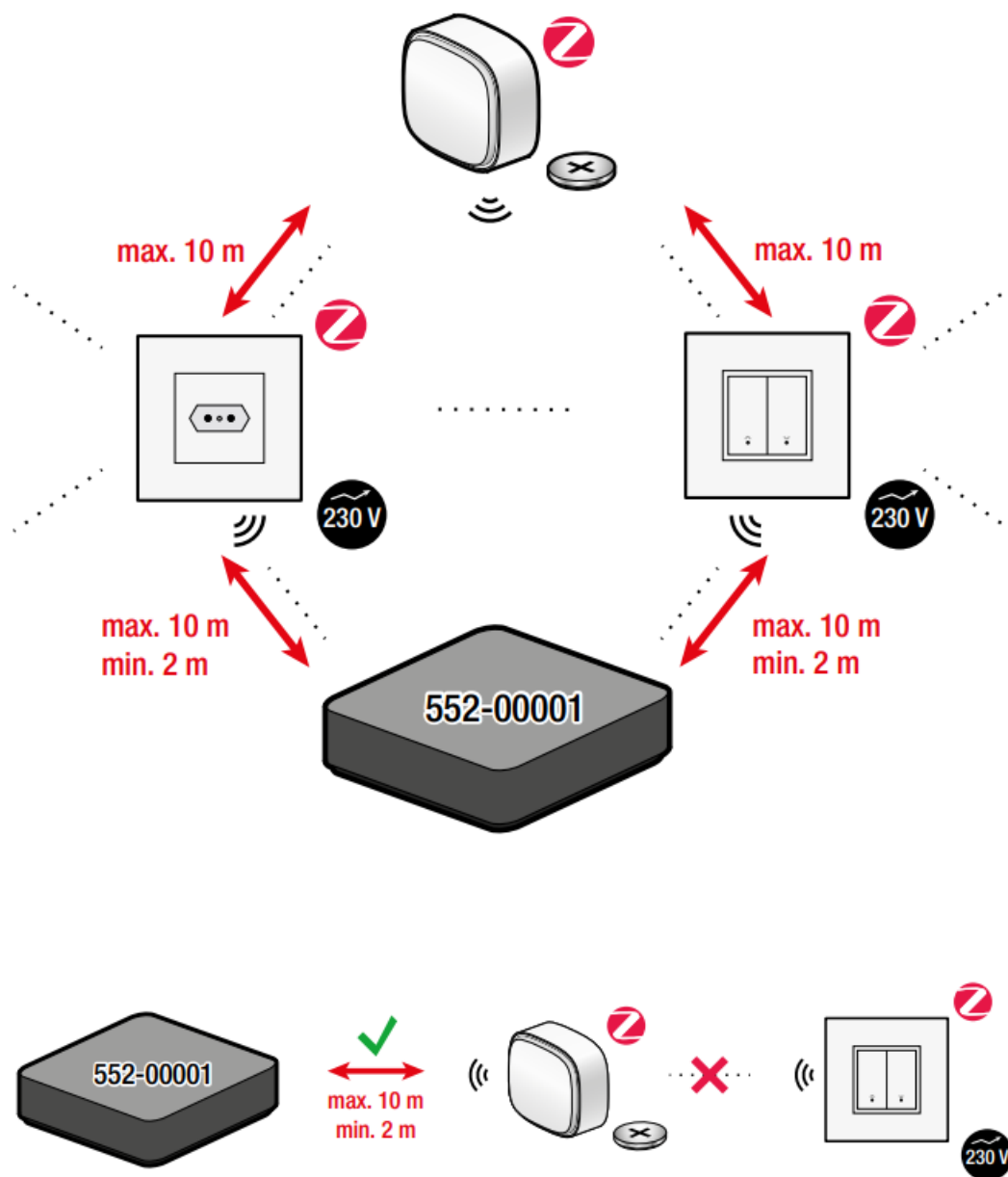


This product must be secured with a miniature circuit breaker (MCB) of max. 16 A in the electrical cabinet. The MCB rating is limited by national installation rules.

Zigbee® network

Network setup

Follow the Zigbee® network setup advice below to guarantee the meshing of the devices before installing the switch on the wall. More information on Zigbee® network principles: guide.niko.eu.

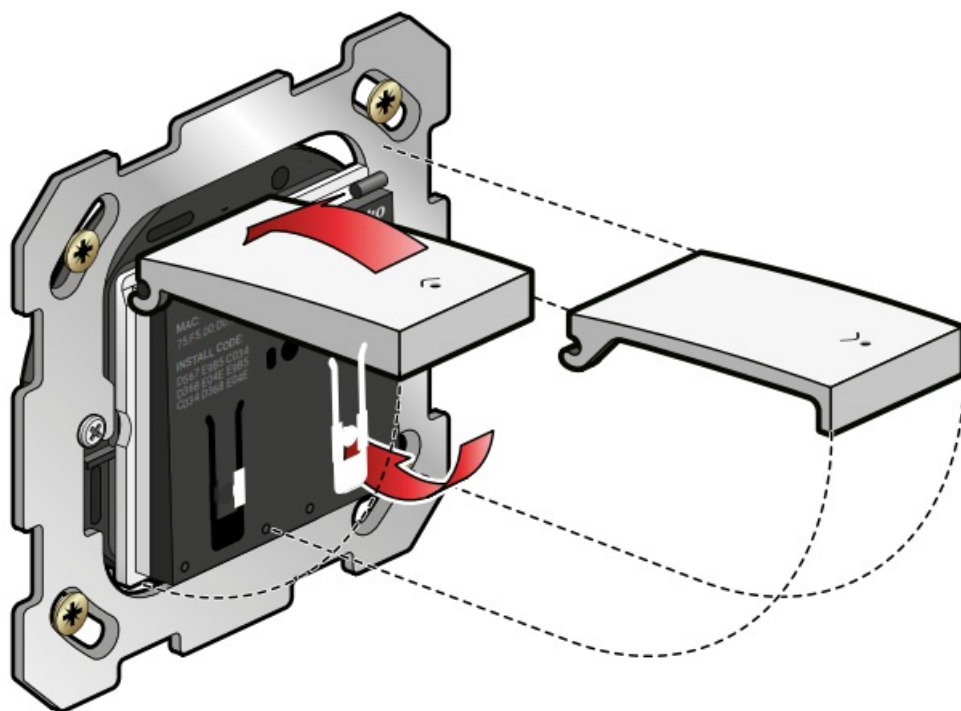


* Respect a minimum distance of 2 m between the smart hub and other RF transmitters (e.g. Wi-Fi devices) or devices such as motors, electronic transformers, solar panel inverters and home batteries to avoid signal interference in the Zigbee® network.

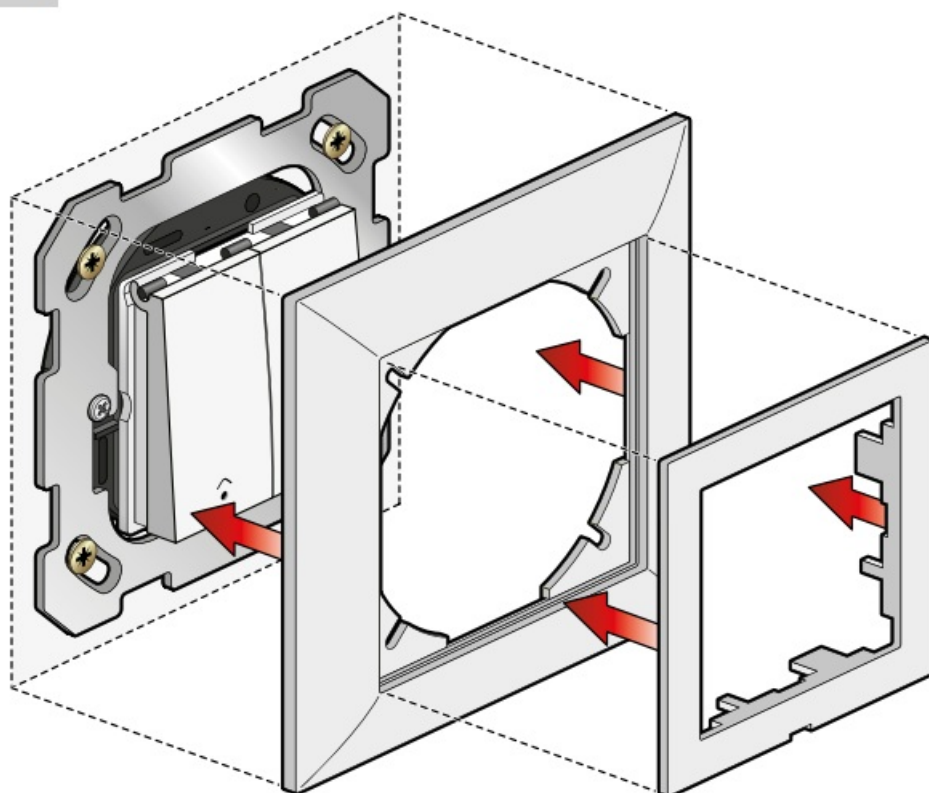
Installation

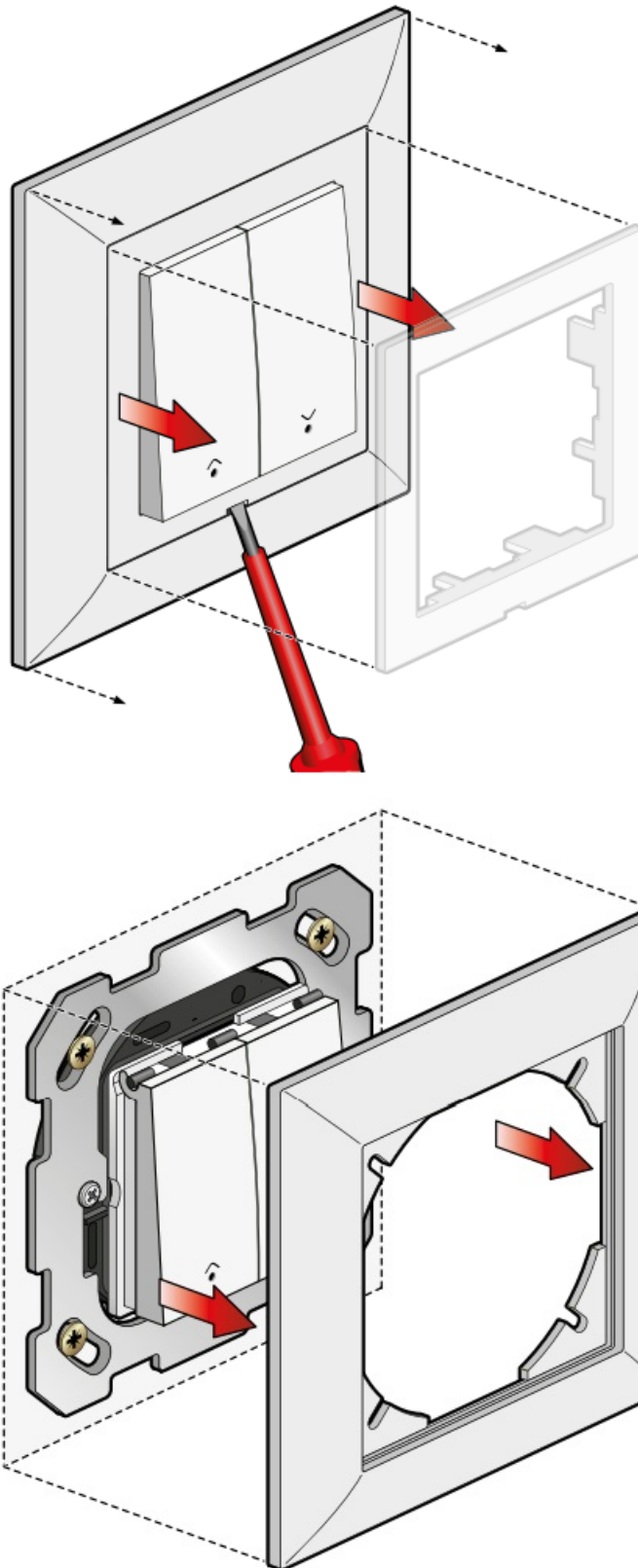


3



4





Stand-alone use

All 230 V connected devices for Niko Home Control for traditional wiring can be used in stand-alone mode until they are connected to a wireless smart hub (552-00001). In stand-alone mode, they switch their own contact.

Connected use

1. Connected to a Niko Home Control installation

More advanced functionalities become available if you connect this device to your wireless smart hub (552-00001) using the Niko Home Control programming software or Niko Home app. Consult guide.niko.eu for more

information about the installation and the connected use.

Download the Niko Home Control programming software



Niko Home Control programming software

www.niko.eu/article/550-99102 (Windows)

www.niko.eu/article/550-99202 (Mac)

Control your device with the Niko Home app

How to connect the Niko device to the Niko Home Control network

1. Reset the Niko Zigbee® device when it is already connected to another Zigbee® network. See § Reset.
2. Follow the onboarding procedure in the Niko Home Control programming software or the Niko Home app to add new Niko Zigbee® devices.
3. Set the Niko Zigbee® device in pairing mode by pressing the switch of programming software PROJECT DASHBOARD CREATE FILL CABINET ADDRESS Upload button 3 x within a period of 6 seconds > See image § Pairing mode. The blue LEDs start blinking for max. 5 minutes.
4. The connected motor control is successfully added to the Zigbee® network when the blue LEDs are ON for 4 seconds.

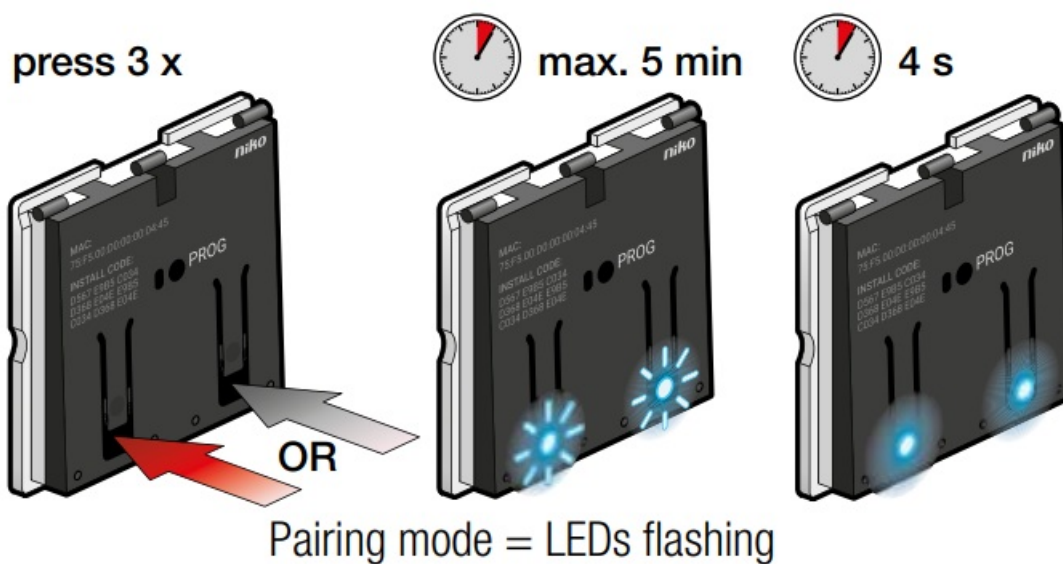
Connected to a third-party Zigbee® network

Niko connected Zigbee® devices behave like standard Zigbee® devices in ET ADDRESS third-party networks that allow this operation. Consult the manufacturer's manual for more information on the possibility to use third-party Zigbee® devices in their network.

Specific Niko Home Control functions will not be enabled with Niko Zigbee® devices connected to a third-party Zigbee® controller/gateway.

Consult the details on guide.niko.eu. See also the disclaimer on www.niko.eu/zigbee.

Pairing mode



Control



Online guide

Consult guide.niko.eu for more information about the installation, onboarding, the stand-alone/connected use and troubleshooting.

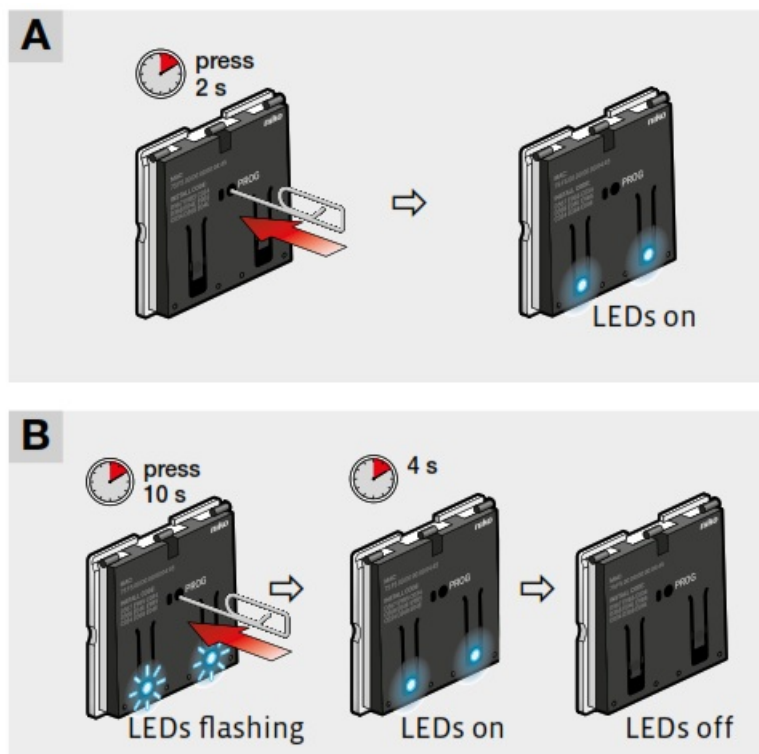


guide.niko.eu

Troubleshooting

Problem	Cause	Action
I want to use the connected motor control but I don't yet have a smart hub to connect it with	All 230 V connected devices for Niko Home Control can be used in stand-alone mode until they are connected to a smart hub. In this mode, they only switch their own contacts. The motor control includes an internal switch-over delay of 0.5 seconds when changing the run direction in stand-alone and in connected mode. This switch-over delay allows the motor capacitor to discharge its energy and protects the motor against current peaks and sudden torque changes	
My smart hub doesn't work anymore	Consult the manual of the wireless smart hub (552-00001) at www.niko.eu	If the power of the smart hub switches off, all 230 V connected devices will continue to operate in stand-alone mode. They will only switch or dim their own contacts. Consult the product manual to resolve the issue
	The power supply is off	Switch on the power supply
The connected motor control cannot be found in the Niko Home app or programming software	The distance between the connected motor control and the smart hub is too small	Make sure there is a distance of at least 2 meters between the device and the smart hub
	The connected motor control and the smart hub, or another connected device are located too far from each other	Make sure there is a distance of maximum 10 meters between the device and the smart hub or a subsequent 230 V connected Zigbee® device. To increase the range, you can for example add an additional 230 V powered Zigbee® device or a Zigbee® repeater into the network
	There is no connection between the Niko Home app or laptop/pc and the smart hub	Check the connection to the smart hub. Consult the product manual to resolve the issue
The load does not switch on	The motor is not suitable for this motor control	The two contacts of the connected motor control can handle a motor load of max. 1.5 A
	The connected motor control is defective	Replace the connected motor control
	The motor is defective	Replace the motor

Reset



Specifications

Article number	101-72311-41
Maximum load	3 A
Power supply	230 Vac \pm 10%, 50 Hz
Circuit Breaker	Maximum MCB rating 16 A*
Wire capacity	2 x 2.5 mm ²
Protocol	Zigbee® 3.0, 2.4 GHz
Mounting method	Flush-mounting box
..... min. depth 50 mm (10 mm cabling space included)	
Flush-mounting box specifications	Depth = min. 40 mm
.....(cabling space included)	
.....Screw fixing = 78 mm diagonal (for single application)	
..... Inner diameter box = min. 60 mm	
.....Multiple boxes centre distance horizontal = 60 mm	
..... Multiple boxes centre distance vertical = 60 mm	
Mounting height	110 – 120 cm
Modification of settings	Stand-alone mode:
.....Buttons on front panel, behind the central plate	
.....Connected mode:	
..... Niko Home Control programming software	
..... Niko Home app	
Maximum range (between switch and smart hub)	10 m
..... (longer ranges are possible with the meshing capability	
..... of 230 V connected Zigbee® devices)	
Maximum per installation	Max. 50 connected Zigbee® devices
Operating frequency	2.4 GHz
Maximum RF power	10 dBm
Protection degree	IP20
Ambient temperature	0 – 40 °C
Dimensions (HxWxD)	77 x 77 x 29 mm
Weight	70 g
Marking	CE, Zigbee®

* The MCB rating is limited by national installation rules.



Warnings regarding installation

The installation of products that will permanently be part of the electrical installation and which include dangerous voltages, should be carried out by a qualified installer and in accordance with the applicable regulations. This user manual must be presented to the user. It should be included in the electrical installation file and it should be passed on to any new owners. Additional copies are available on the Niko website or via Niko customer services.

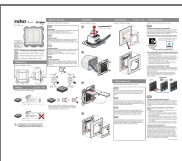
Support & contact

nv Niko sa
Industriepark West 40
9100 Sint-Niklaas, Belgium
www.niko.eu
+32 3 778 90 80
support@niko.eu

Niko prepares its manuals with the greatest care and strives to make them as complete, correct and up-to-date as possible.

Nevertheless, some deficiencies may subsist. Niko cannot be held responsible for this, other than within the legal limits. Please inform us of any deficiencies in the manuals by contacting Niko customer services at support@niko.eu.

Documents / Resources



[niko 101-72311-41 Zigbee Connected Motor Control](#) [pdf] Instruction Manual
101-72311-41, Zigbee Connected Motor Control, Motor Control, Zigbee Control, Connected Motor Control

References

- [✕ Confluence Mobile - Niko Guide](#)
- [n Niko - home automation, switches, socket outlets and detector](#)
- [n Niko - home automation, switches, socket outlets and detector](#)
- [n Niko Home Control II programming software for Windows](#)
- [n Niko Home Control II programming software for Mac](#)
- [n Zigbee](#)