



**Contents** [ [hide](#) ]

- [1 NHP CSPC2LD10150C Meter Isolator](#)
- [2 Specifications](#)
- [3 Product Usage Instructions](#)
- [4 overview](#)
- [5 TOOLS REQUIRED](#)
- [6 INSTALLATION](#)
- [7 OPERATION](#)
- [8 CONTACT](#)
- [9 FAQ](#)
- [10 Documents / Resources](#)
  - [10.1 References](#)



## **NHP CSPC2LD10150C Meter Isolator**



## Specifications

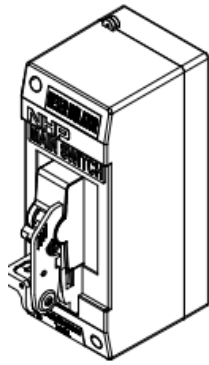
- Product: Meter Isolator
- Configuration: 1 Pole / 3 Pole
- MCB Ratings: 40A/50A/63A
- Current Fault Rating: 6kA/10kA

## Product Usage Instructions

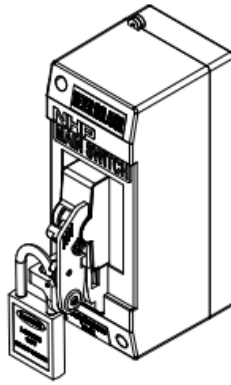
- Refer to Steps 1-1 to 1-11 on pages 2-5 for the installation procedure.
- Ensure de-energization before starting the installation process.
- Follow the wall mounting dimensions provided in the manual for both 1-Pole and 3-Pole configurations.
- Use the necessary tools and consumables as listed in the manual.
- Assemble the terminal pins to the MCB following the instructions.
- Terminate cables into terminal pins with a maximum size of 16 mm<sup>2</sup>.
- Complete the installation by assembling the top cover.
- Refer to Steps 2-1 & 2-2 on pages 5-6 for operational guidelines.
- Ensure the lockdown operation is set to the OFF position before proceeding.
- Follow the instructions for adding a padlock or wire seal for security measures.

## overview

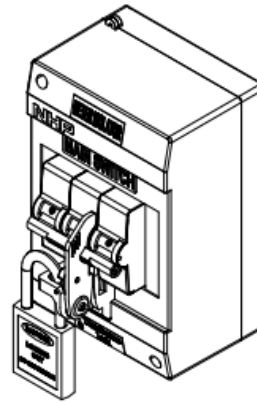
1 Pole / 3 Pole



1 Pole Padlock



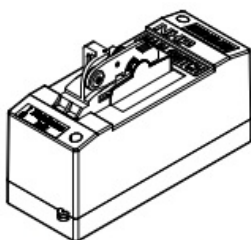
3 Pole Padlock



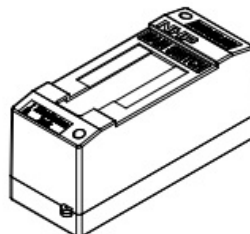
## Part Number

Part Number	No. of poles	Current Rating	Fault Rating
CSPC2LD10140C	1	40C	10kA
CSPC2LD10150C	1	50C	10kA
CSPC2LD10163C	1	63C	10kA
CSPC2LD10163D	1	63D	10kA
CSPC2LD6163C	1	63C	6kA
CSPC2LD6163D	1	63D	6kA
CSPC4LD10350C	3	50C	10kA
CSPC4LD10363C	3	63C	10kA
CSPC4LD6363C	3	63C	6kA
CSPC4LD10363D	3	63D	10kA

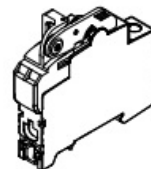
## CSPC2LDx 1 Pole KIT (supplied)



Part Numbers: See Table



A



B

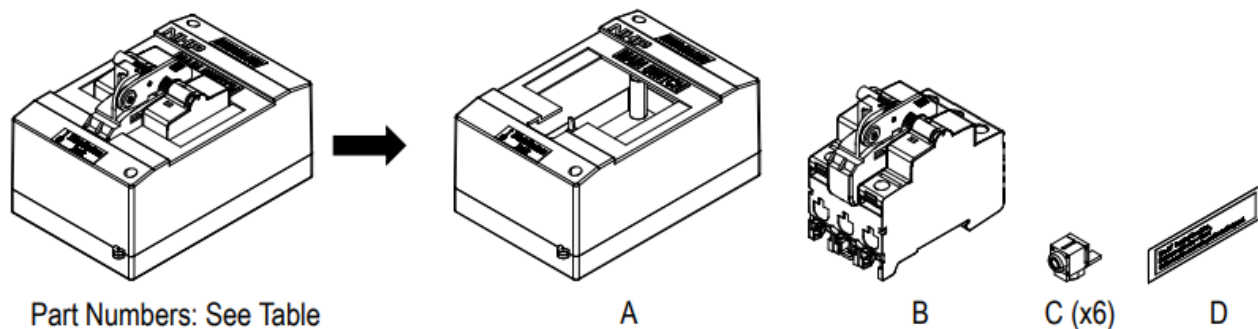


C (x2)



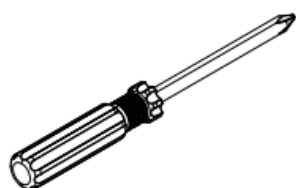
D

## CSPC4LDx 3 Pole KIT (supplied)



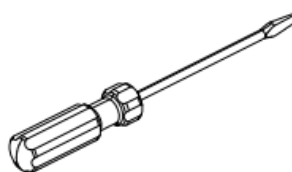
## TOOLS REQUIRED

T1



Screwdriver  
Pozi #2

T2

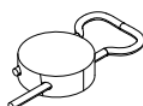


Screwdriver  
Flathead

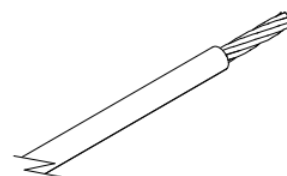
## CONSUMABLES (not supplied)



Padlock  
(maximum Ø 7mm hasp)



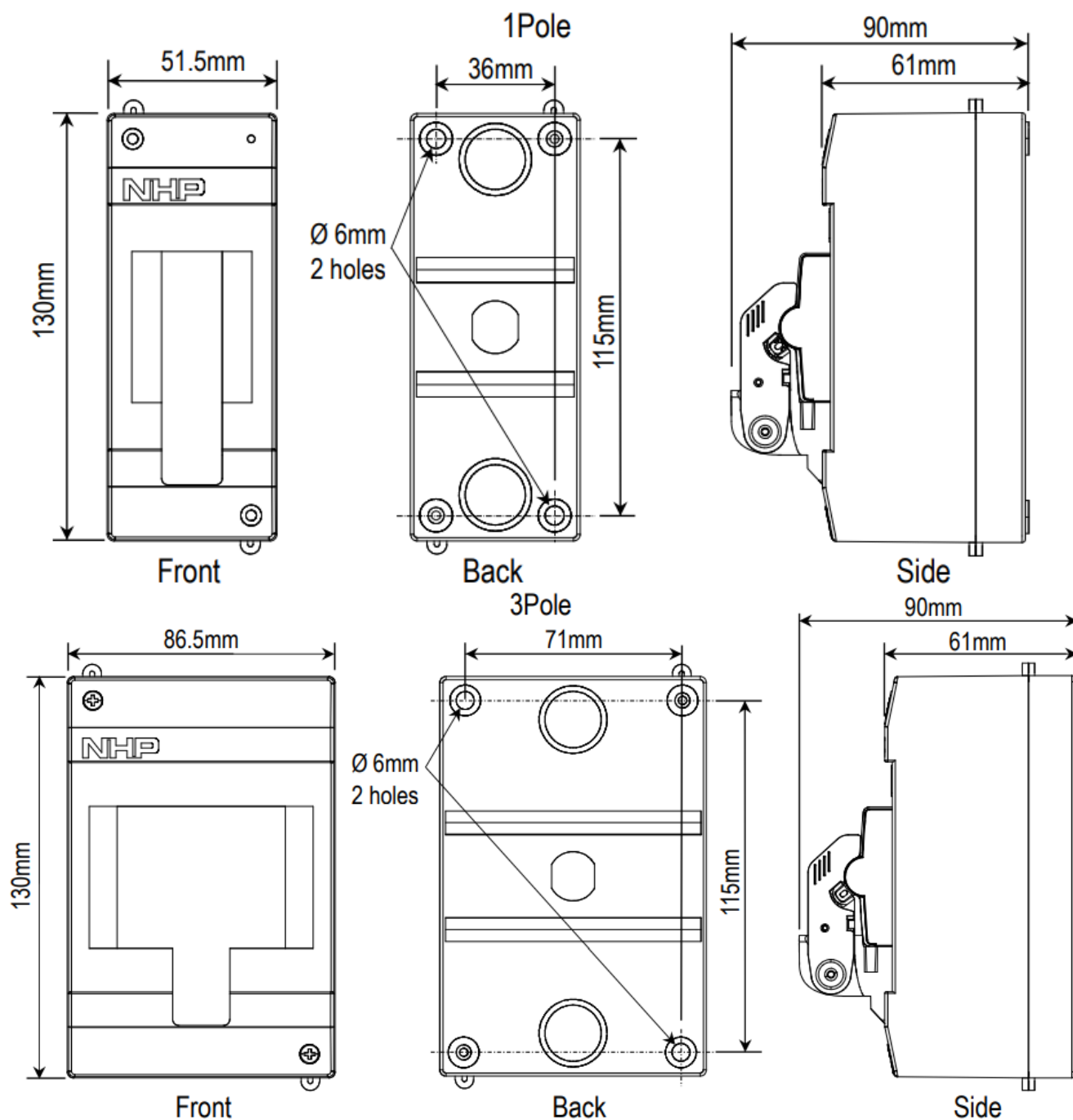
Wire seal  
(maximum Ø 1mm wire)



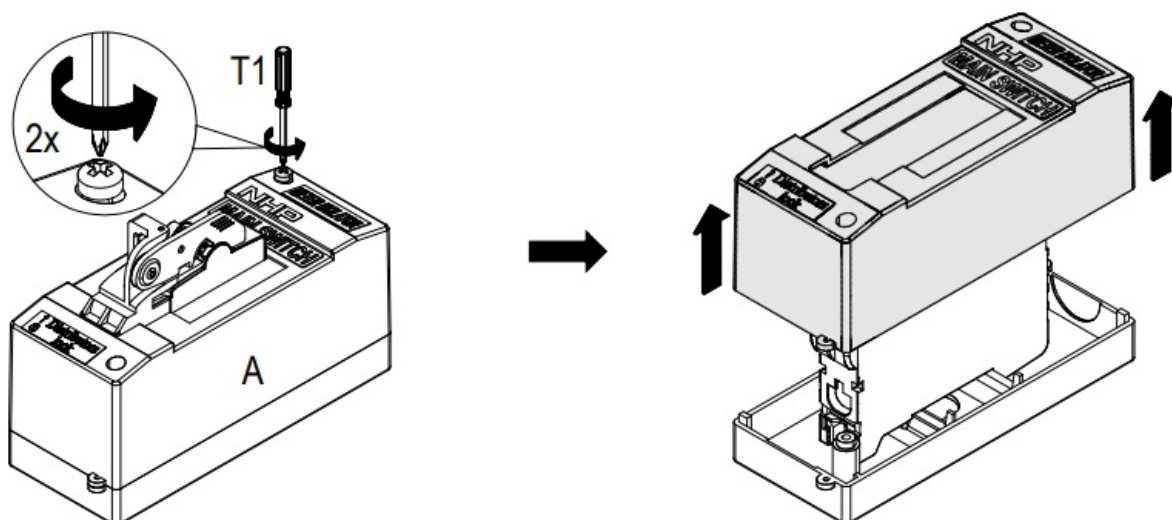
Cable  
(maximum 16mm<sup>2</sup>)

## INSTALLATION

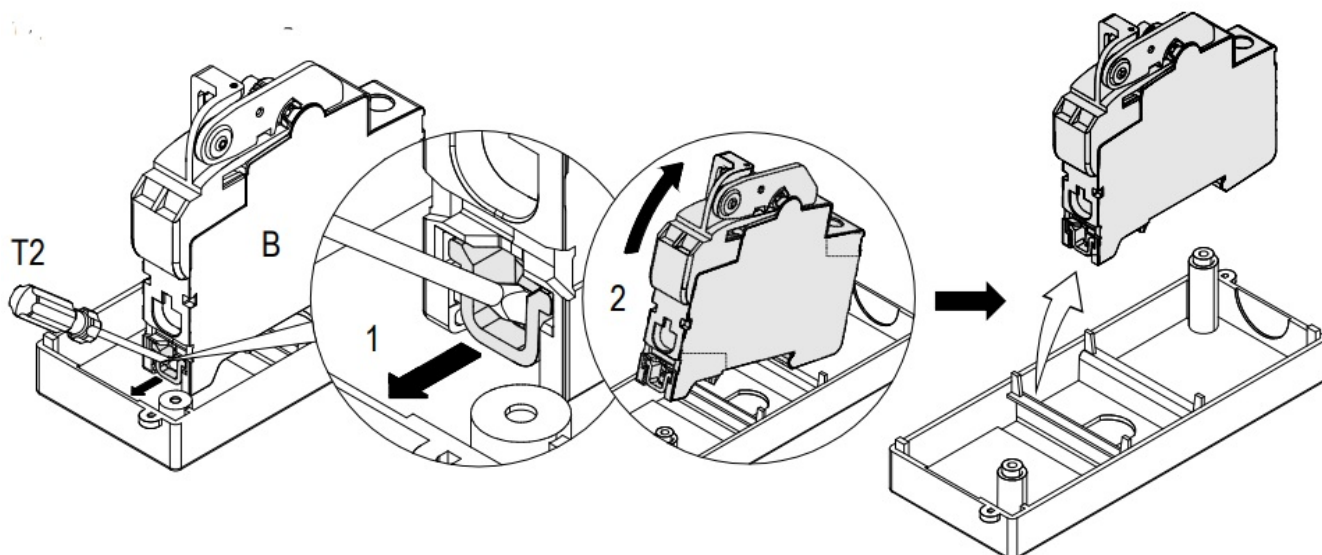
1. Wall mounting dimensions



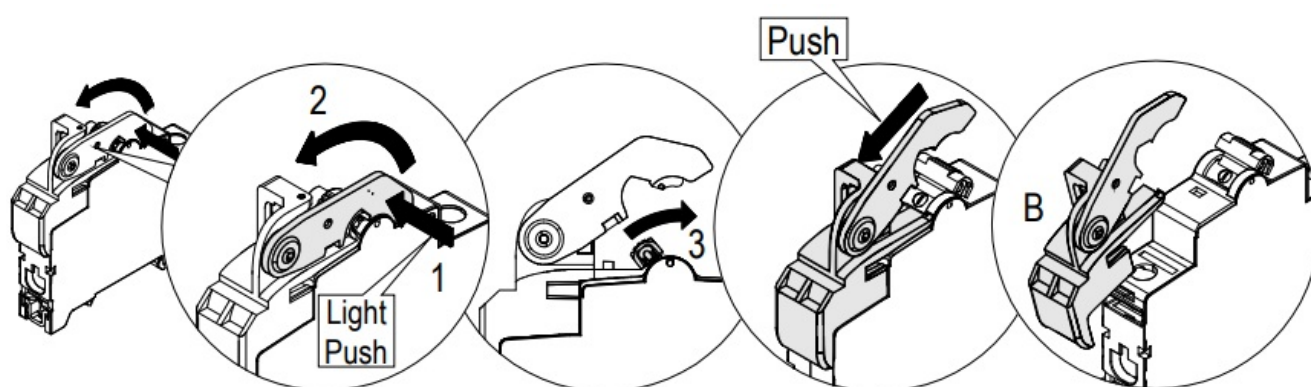
2. Remove top cover from the assembly



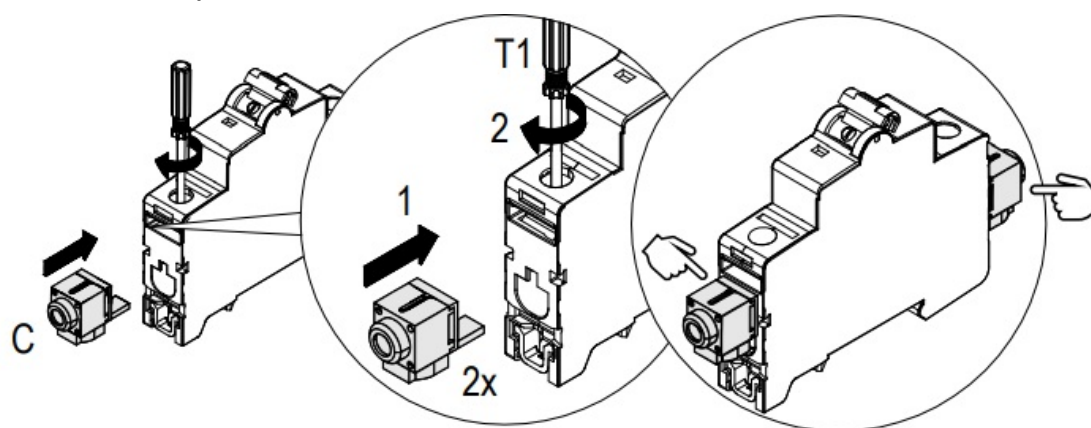
3. Remove MCB with lockdin attachment



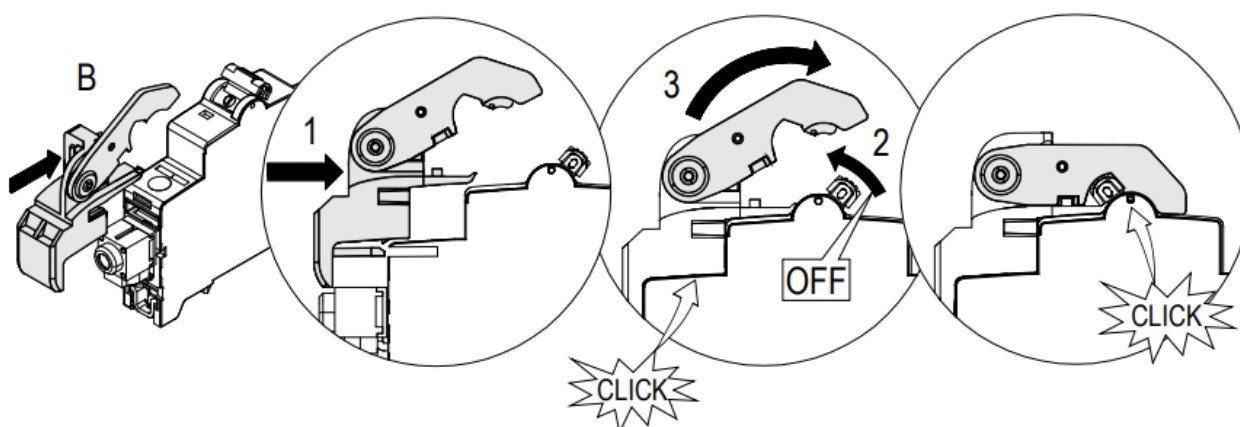
4. Remove the lockdin attachment from MCB



5. Assemble terminal pins to MCB

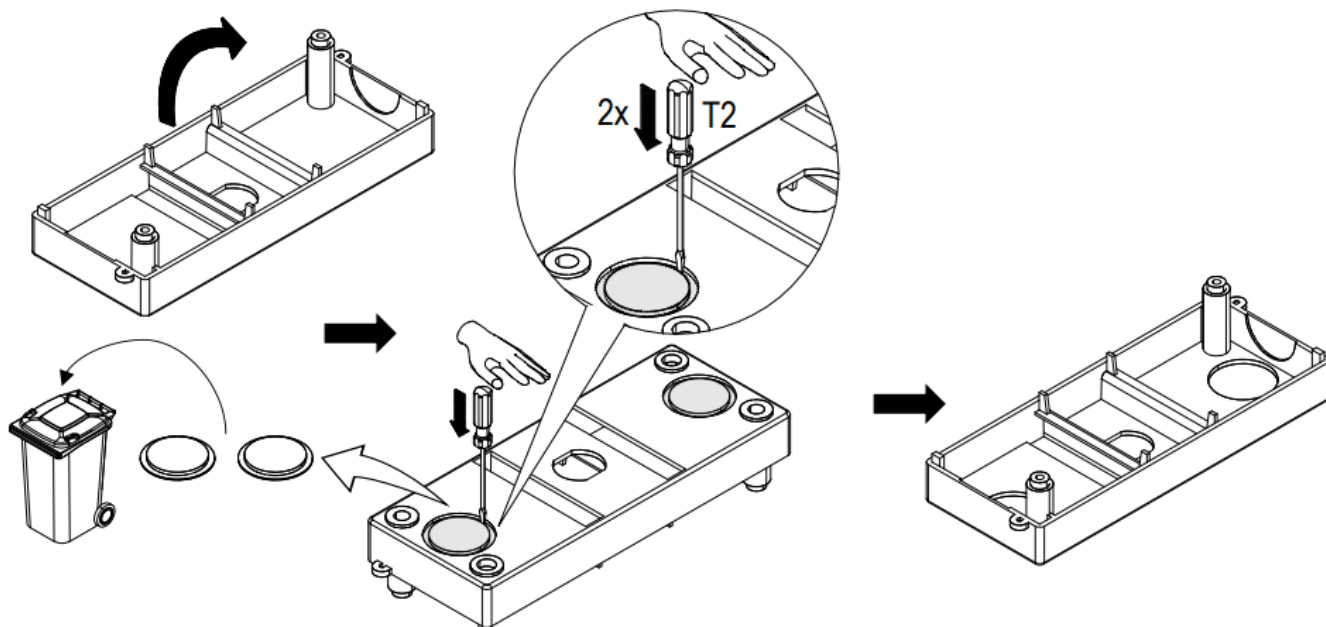


6. Reassemble the locking attachment to MCB

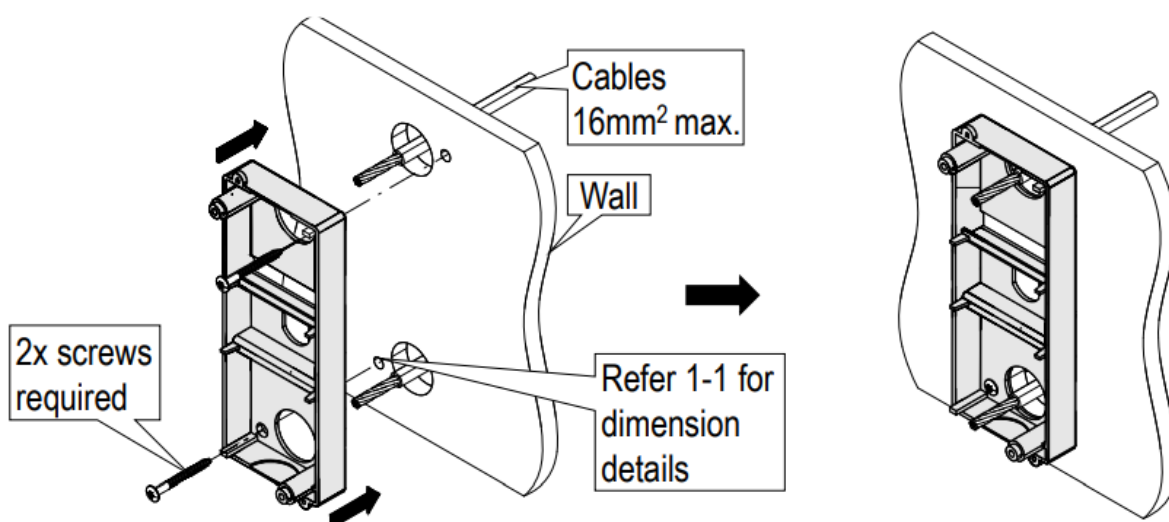


7. Knock-out Ø22mm holes on the enclosure base for rear cable entry

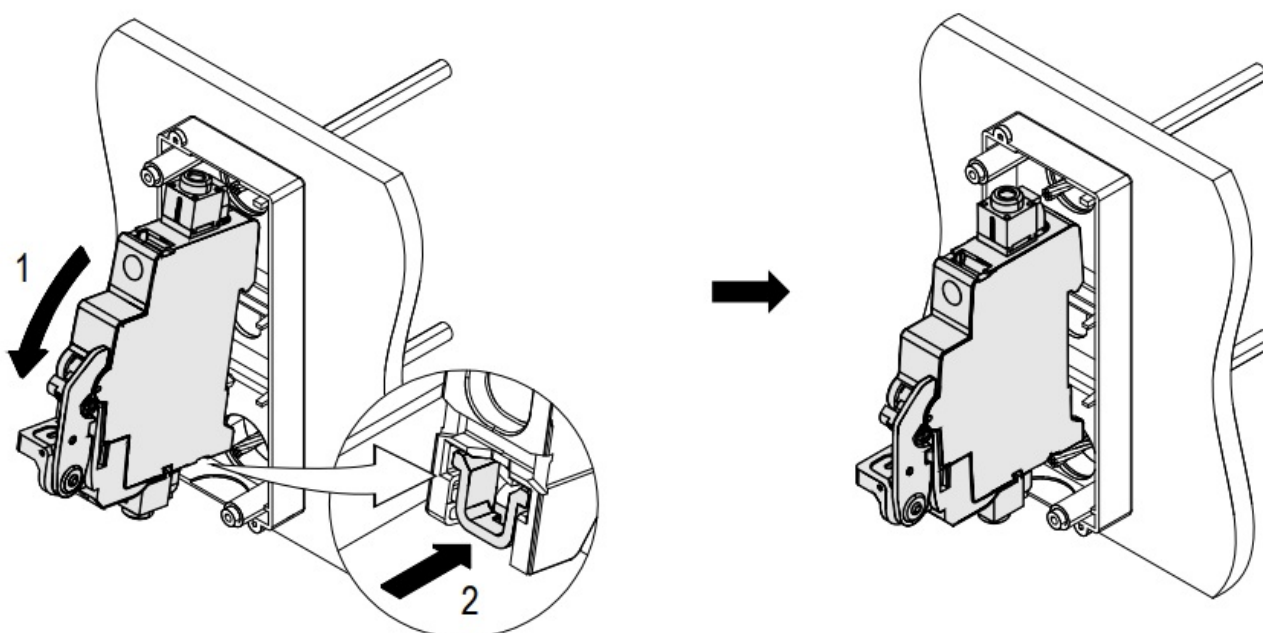




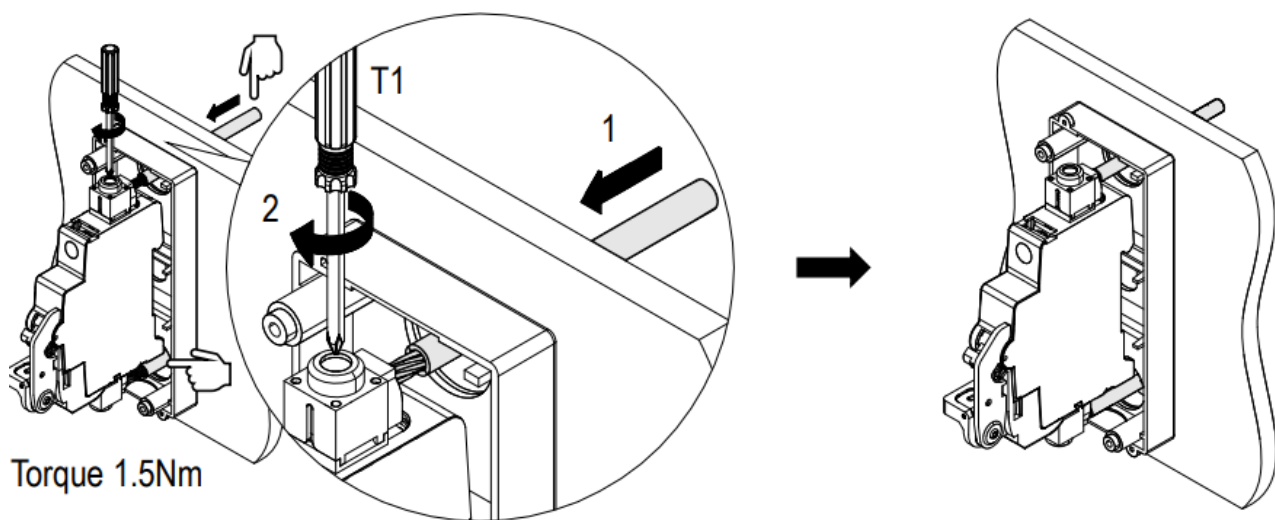
8. Wall mount enclosure base



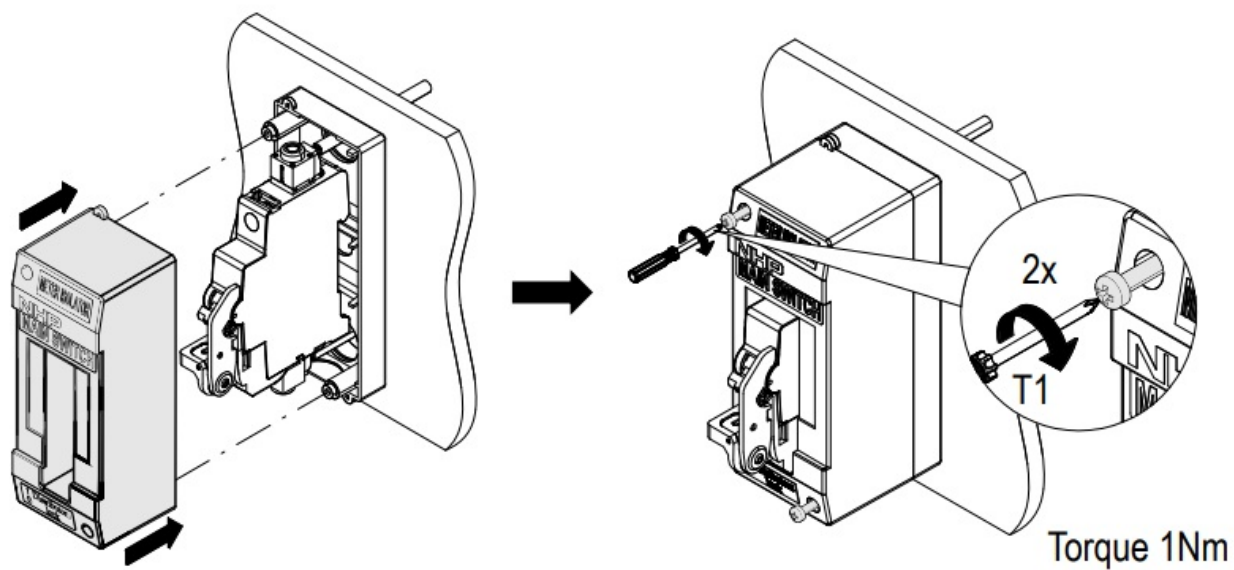
9. Install MCB lockdin assembly



10. Terminate 1-10 cable into terminal pins (maximum 16 mm<sup>2</sup>)



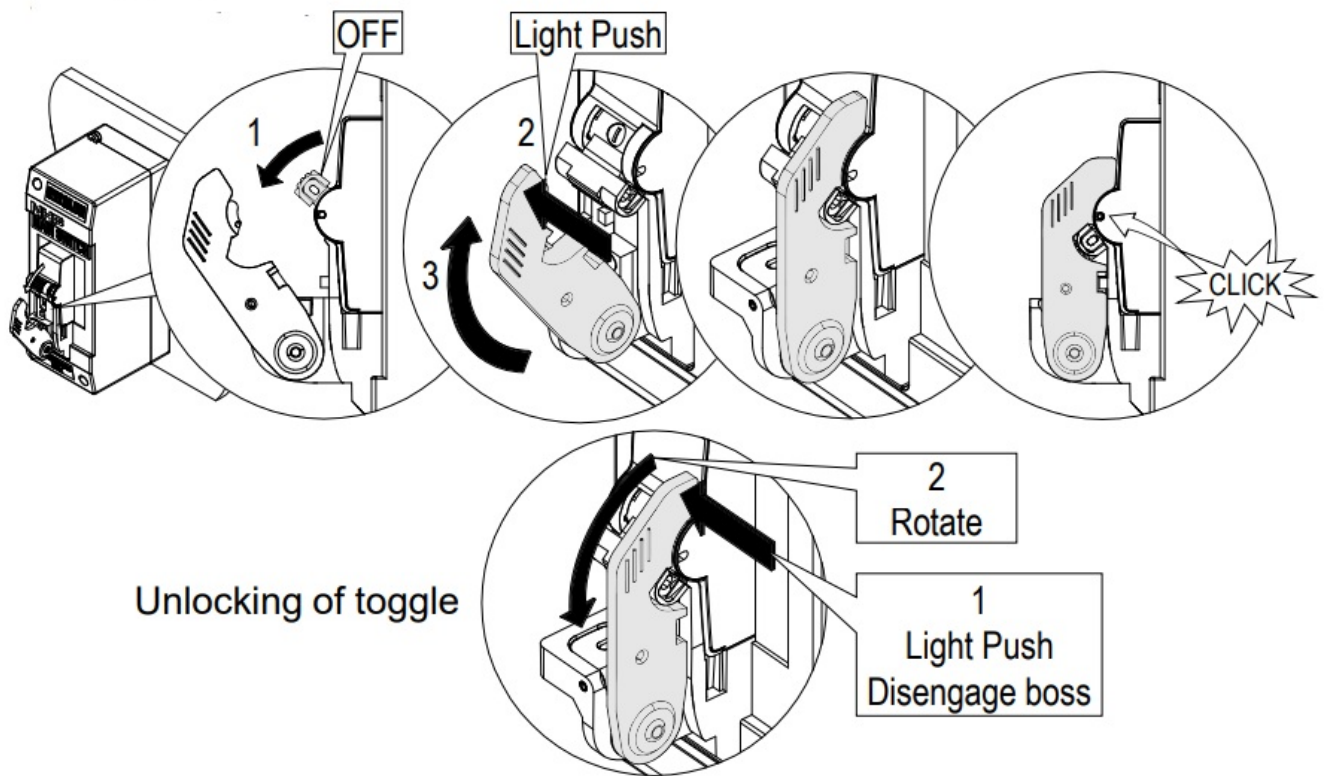
11. Assemble the top cover



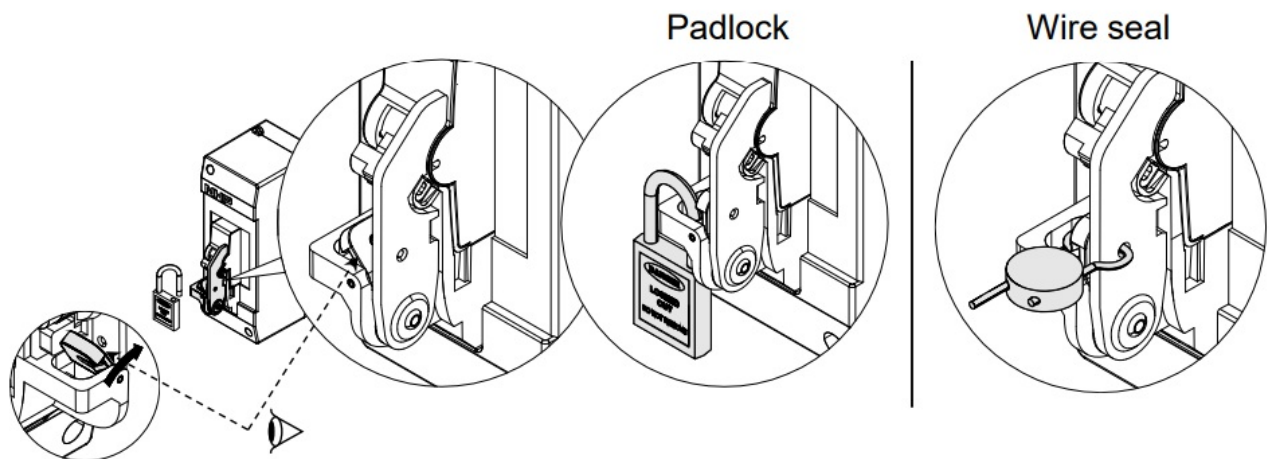
## OPERATION

1. Lockdin operation





## 2. Adding padlock/wire seal



## CONTACT

- AUS 1300 NHP NHP [nhp.com.au](http://nhp.com.au)
- NZ 0800 NHP NHP [nhp-nz.com](http://nhp-nz.com)
- NHP Electrical Engineering Products Pty Ltd A.B.N. 84 004 304 812
- CSPCLDx-IN-001-EN © Copyright NHP 2025.03.18


## FAQ

- **Q:** What should I do if the MCB trips frequently after installation?
- **A:** If the MCB trips frequently, it could indicate an overload or a fault in the electrical circuit. Check the connected loads and wiring for any issues. If problems persist,

consult a qualified electrician for further assistance.

- **Q:** Can I use this product for outdoor installations?
- **A:** The Meter Isolator is designed for indoor use. For outdoor installations, ensure proper weatherproofing and protection against environmental elements.
- **Q:** What is the recommended maintenance schedule for this product?
- **A:** Regular inspection of connections, cables, and overall condition is recommended. Any signs of wear or damage should be addressed promptly. Consult the user manual for specific maintenance guidelines.

## Documents / Resources

	<p><a href="#">NHP CSPC2LD10150C Meter Isolator [pdf]</a> Installation Guide</p> <p>CSPC2LD10140C, CSPC2LD10150C, CSPC2LD10163C, CSPC2LD10163D, CSPC2LD6163C, CSPC2LD6163D, CSPC4LD10350C, CSPC4LD10363C, CSPC4LD6363C, CSPC4LD10363D, CSPC2LD10150C Meter Isolator, CSPC2LD10150C, Meter Isolator, Isolator</p>
--	--

## References

- [User Manual](#)

📁 NHP

🔍 CSPC2LD10140C, CSPC2LD10150C, CSPC2LD10150C Meter Isolator, CSPC2LD10163C, CSPC2LD10163D, CSPC2LD6163C, CSPC2LD6163D, CSPC4LD10350C, CSPC4LD10363C, CSPC4LD10363D, CSPC4LD6363C, Isolator, Meter Isolator, NHP

---

## Leave a comment

Your email address will not be published. Required fields are marked \*

Comment \*

Name

Email

Website

☐ Save my name, email, and website in this browser for the next time I comment.

Post Comment

Search:

e.g. whirlpool wrf535swhz

Search

[Manuals+](#) | [Upload](#) | [Deep Search](#) | [Privacy Policy](#) | [@manuals.plus](#) | [YouTube](#)

This website is an independent publication and is neither affiliated with nor endorsed by any of the trademark owners. The "Bluetooth®" word mark and logos are registered trademarks owned by Bluetooth SIG, Inc. The "Wi-Fi®" word mark and logos are registered trademarks owned by the Wi-Fi Alliance. Any use of these marks on this website does not imply any affiliation with or endorsement.