

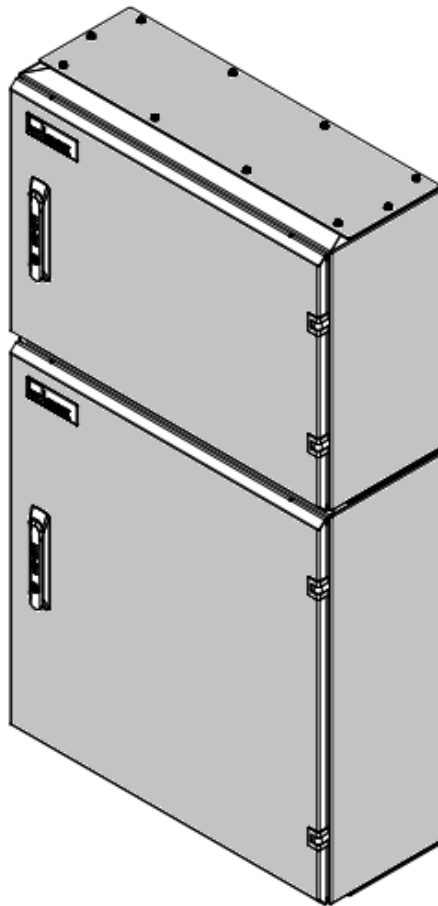


Contents [[hide](#)]

- [1 NHP Concept Plus Panelboard](#)
- [2 Specifications](#)
- [3 INSTRUCTIONS SUIT](#)
- [4 Tools Required \(not included\)](#)
- [5 JOINING GASKET](#)
- [6 Installation Steps](#)
- [7 FAQs](#)
- [8 Documents / Resources](#)
 - [8.1 References](#)



NHP Concept Plus Panelboard



Specifications

- Concept Plus IP42/IP52
- Concept Premier IP66
- MOD6+ Prime IP56

INSTRUCTIONS SUIT

- CONCEPT PREMIER IP66
- CONCEPT PLUS IP42/IP52
- MOD6+ PRIME IP56

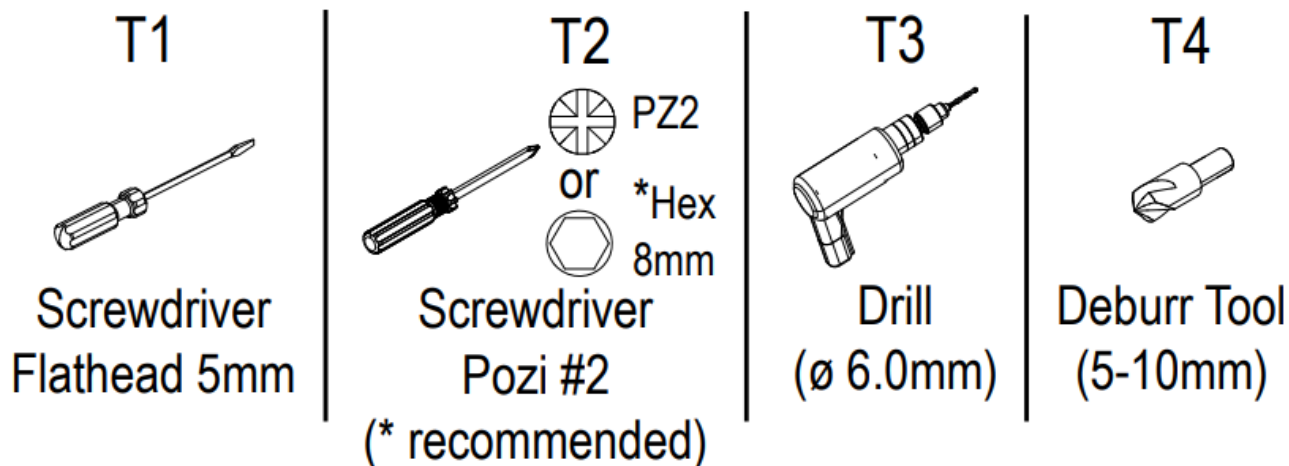
Installation as per these instructions will maintain the IP ratings for the enclosures.

ITEMS REQUIRED

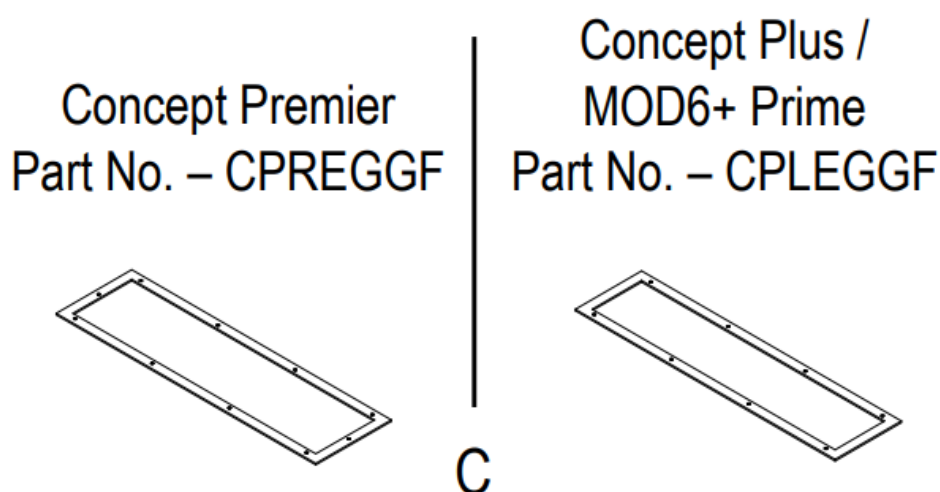


Two like model type enclosures and an appropriate joining gasket.

Tools Required (not included)

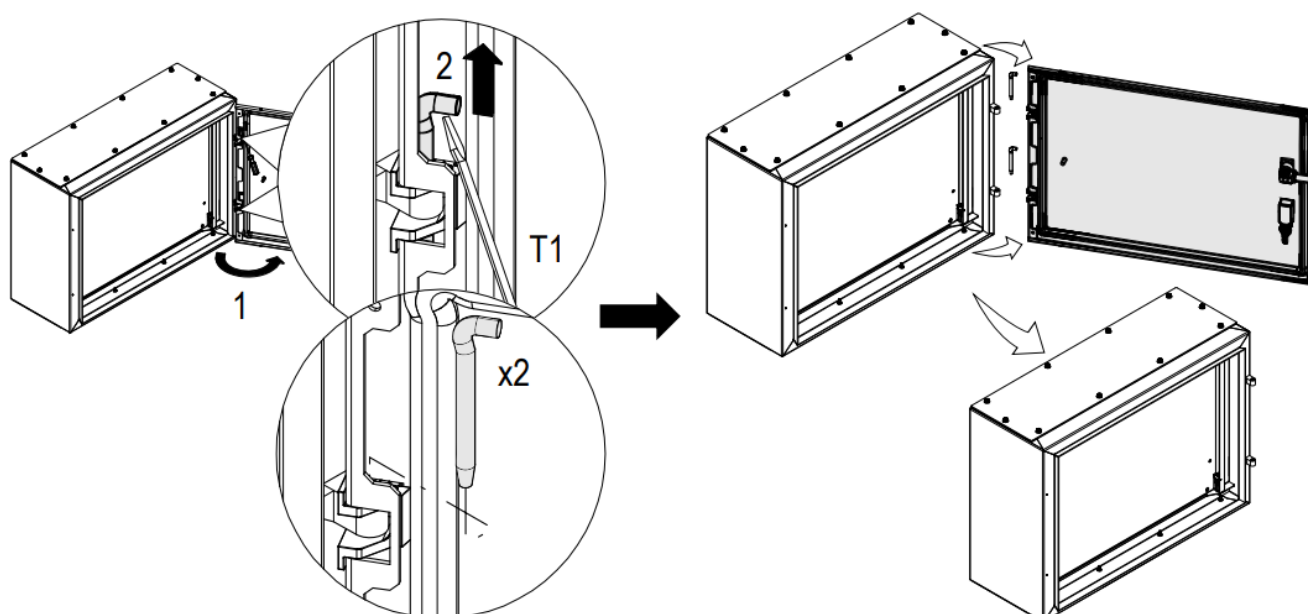


JOINING GASKET

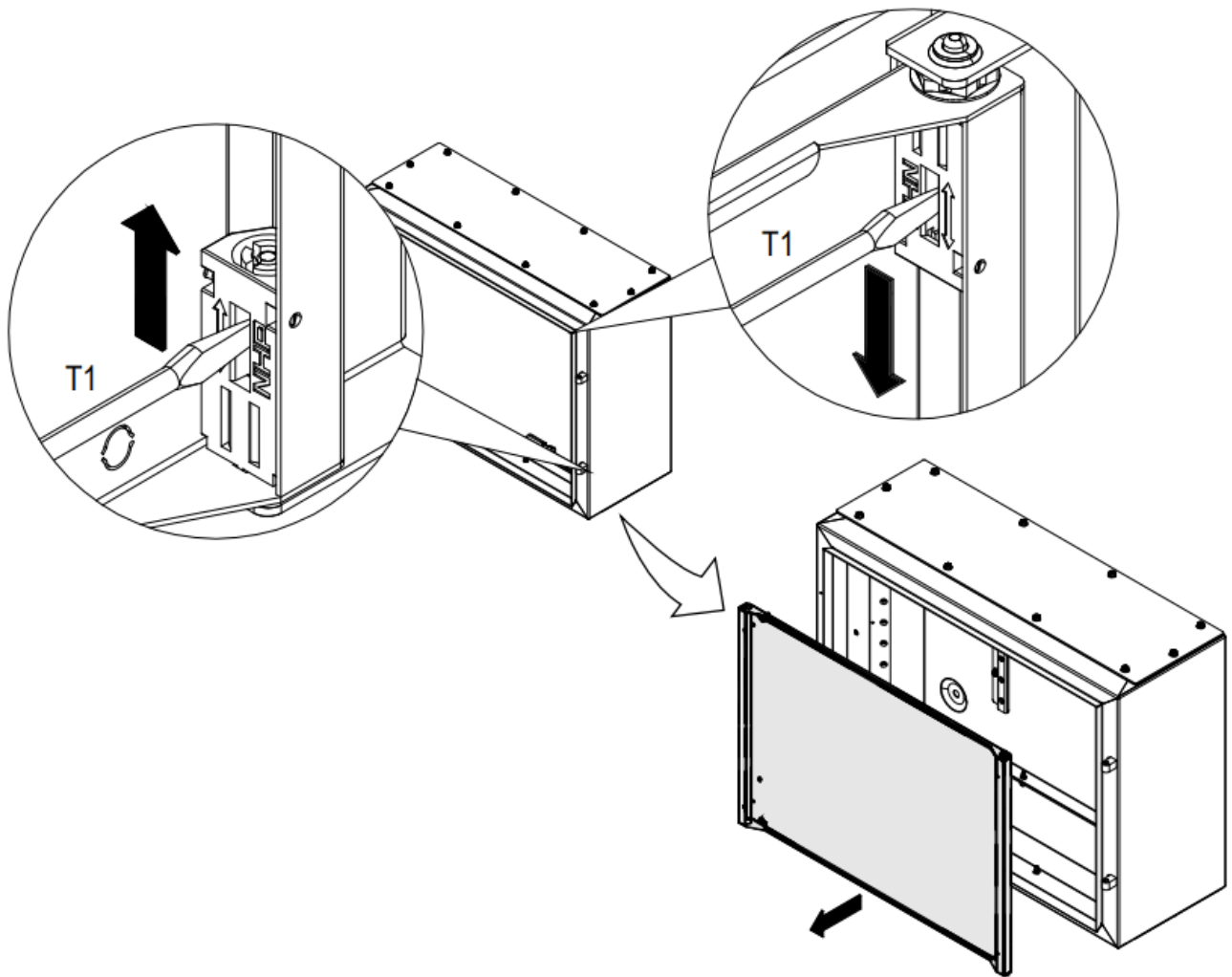


Installation Steps

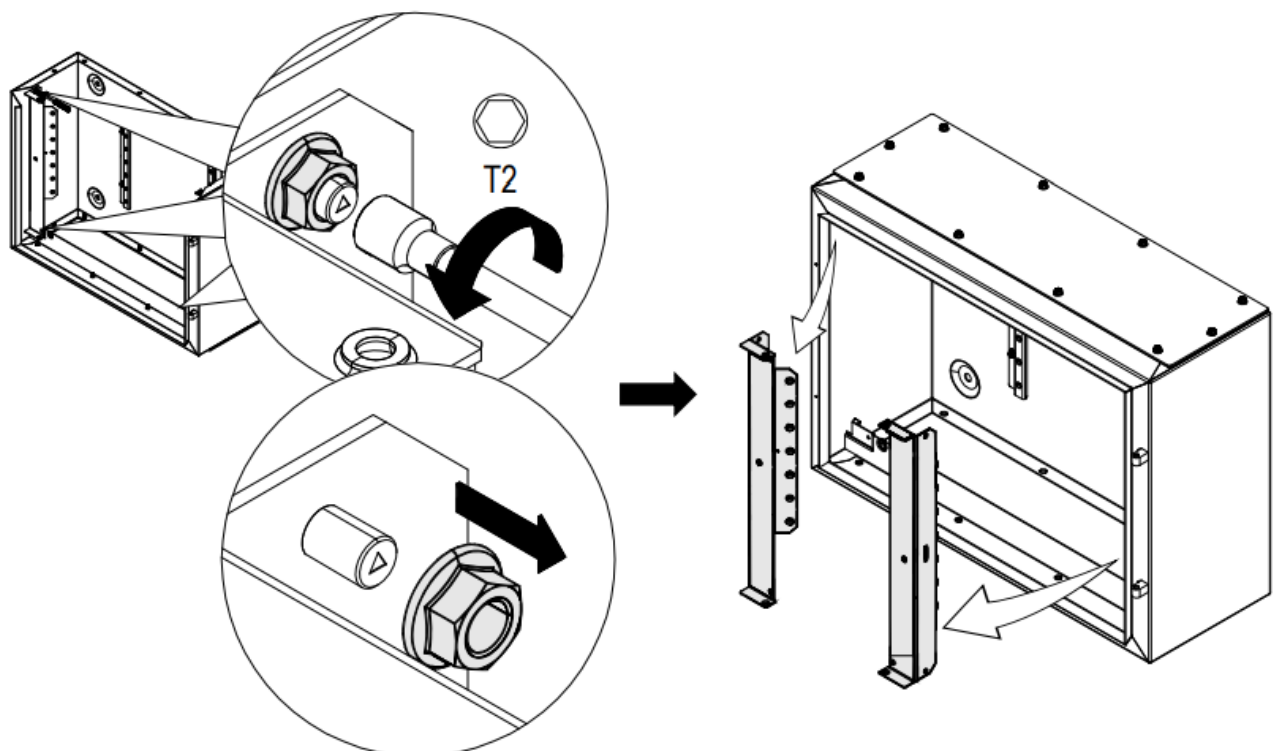
1. Remove the door from the smaller enclosure (if the enclosure sizes are equal)



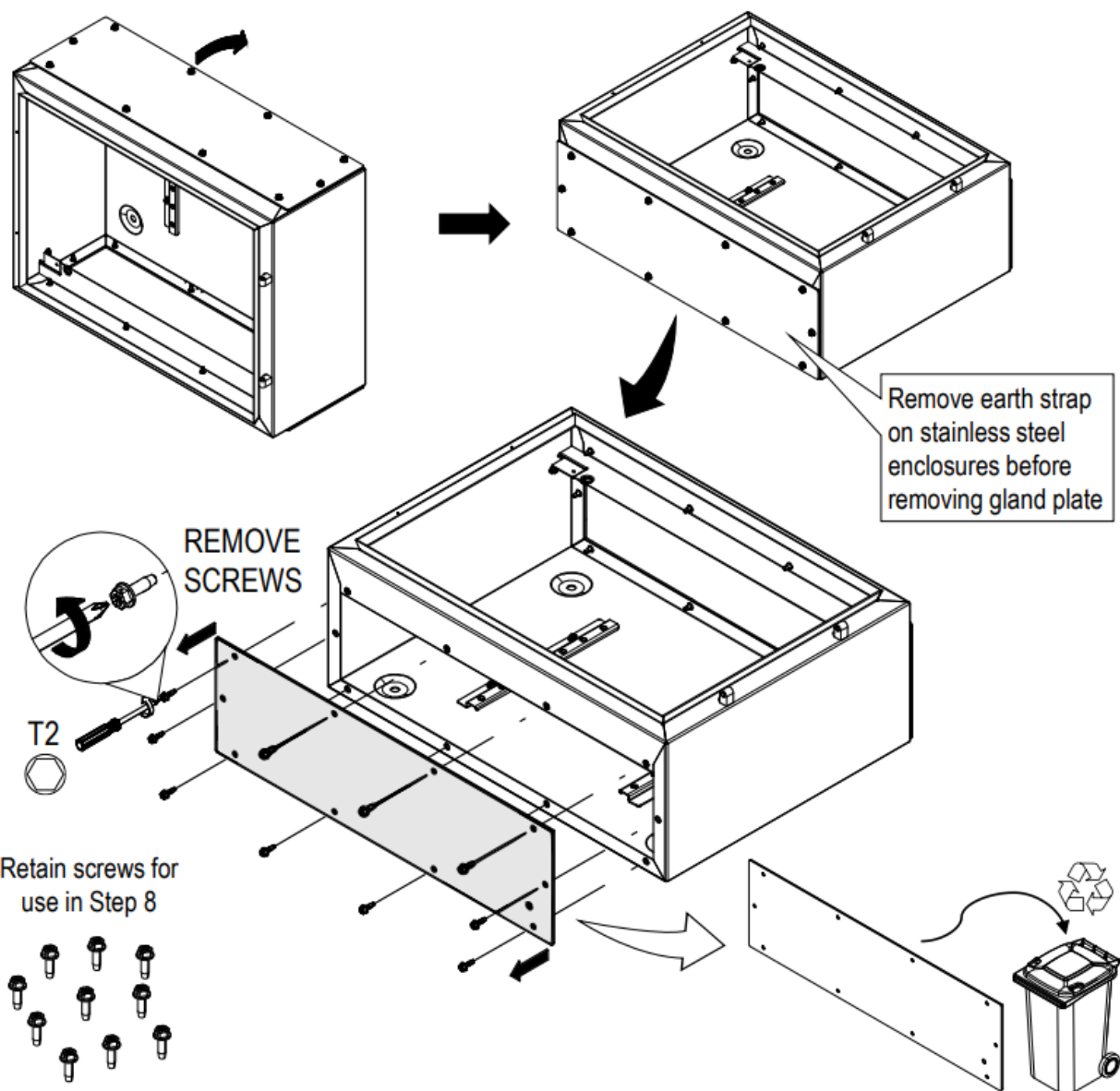
2. Remove the escutcheon from the smaller enclosure. Refer to CELES-IN-001-EN for escutcheon removal (Steps 1-5).



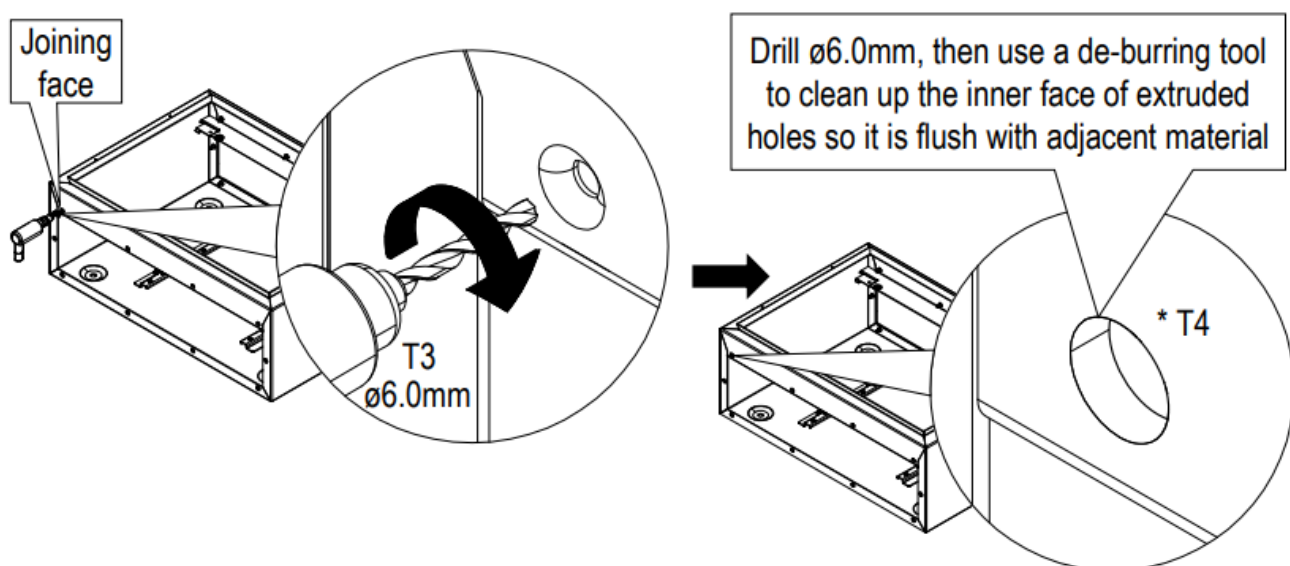
3. Remove side rails from the smaller enclosure.



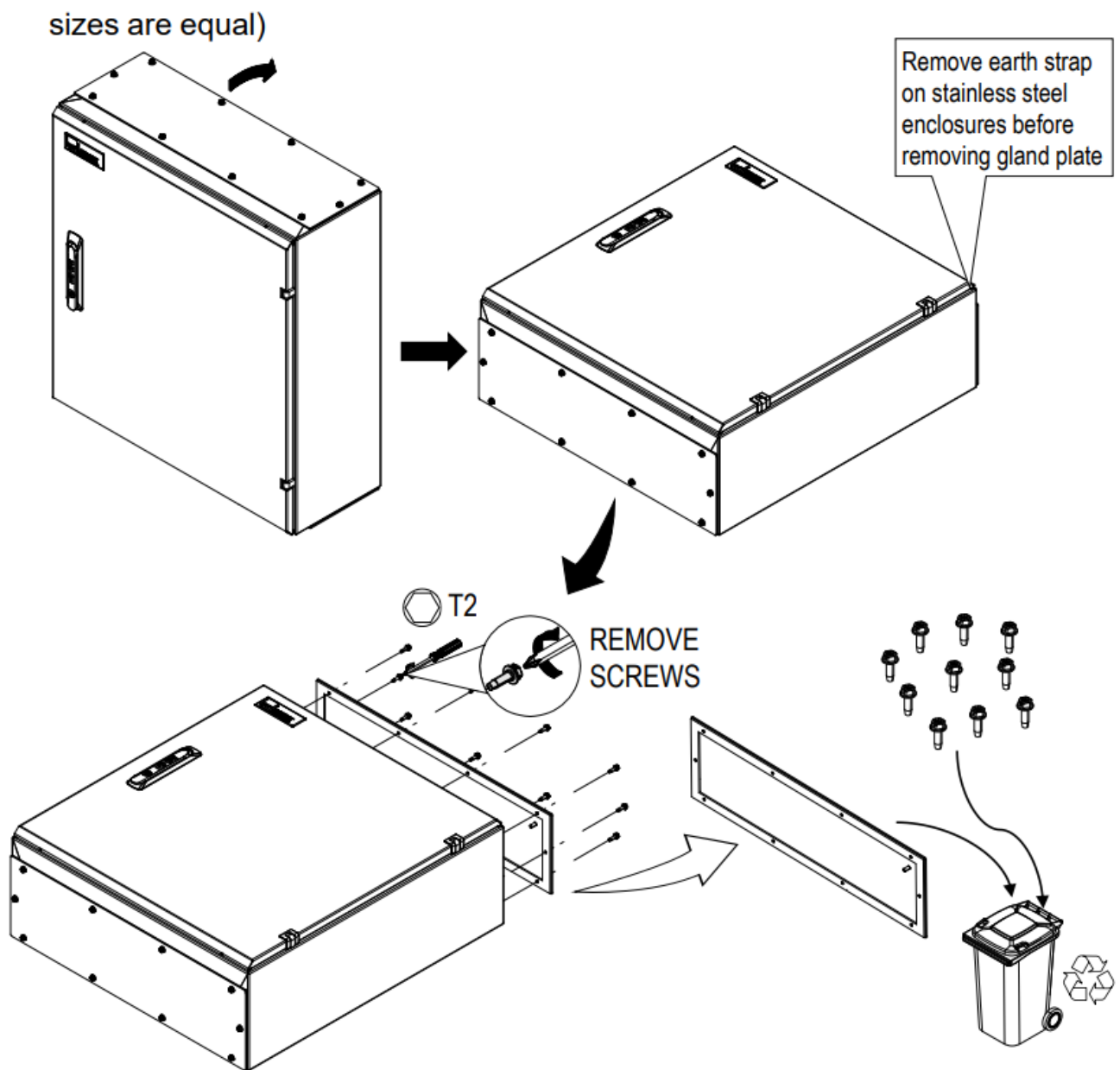
4. Remove the joining end gland plate from the smaller enclosure.



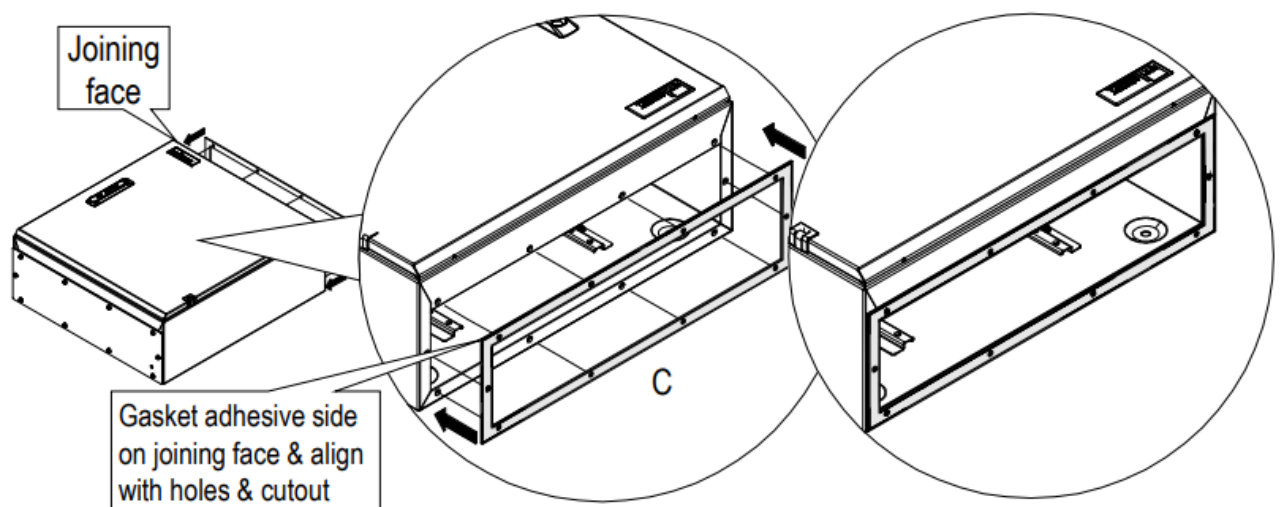
5. In the smaller enclosure, drill out the gland plate opening screw holes to $\varnothing 6.0\text{mm}$. T4—De-burring tool (if unavailable, a larger drill bit (e.g. $\varnothing 12\text{mm}$) may be used).



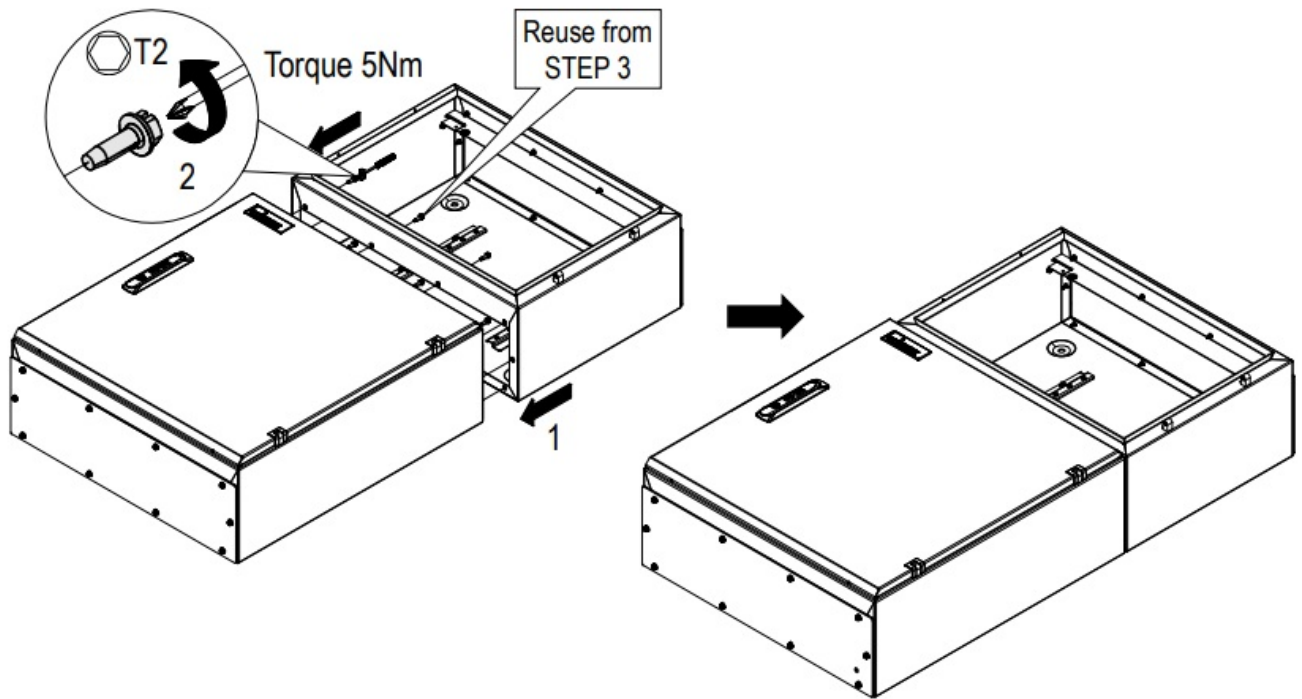
6. Remove the joining end gland plate from the larger enclosure (or other enclosure if sizes are equal).



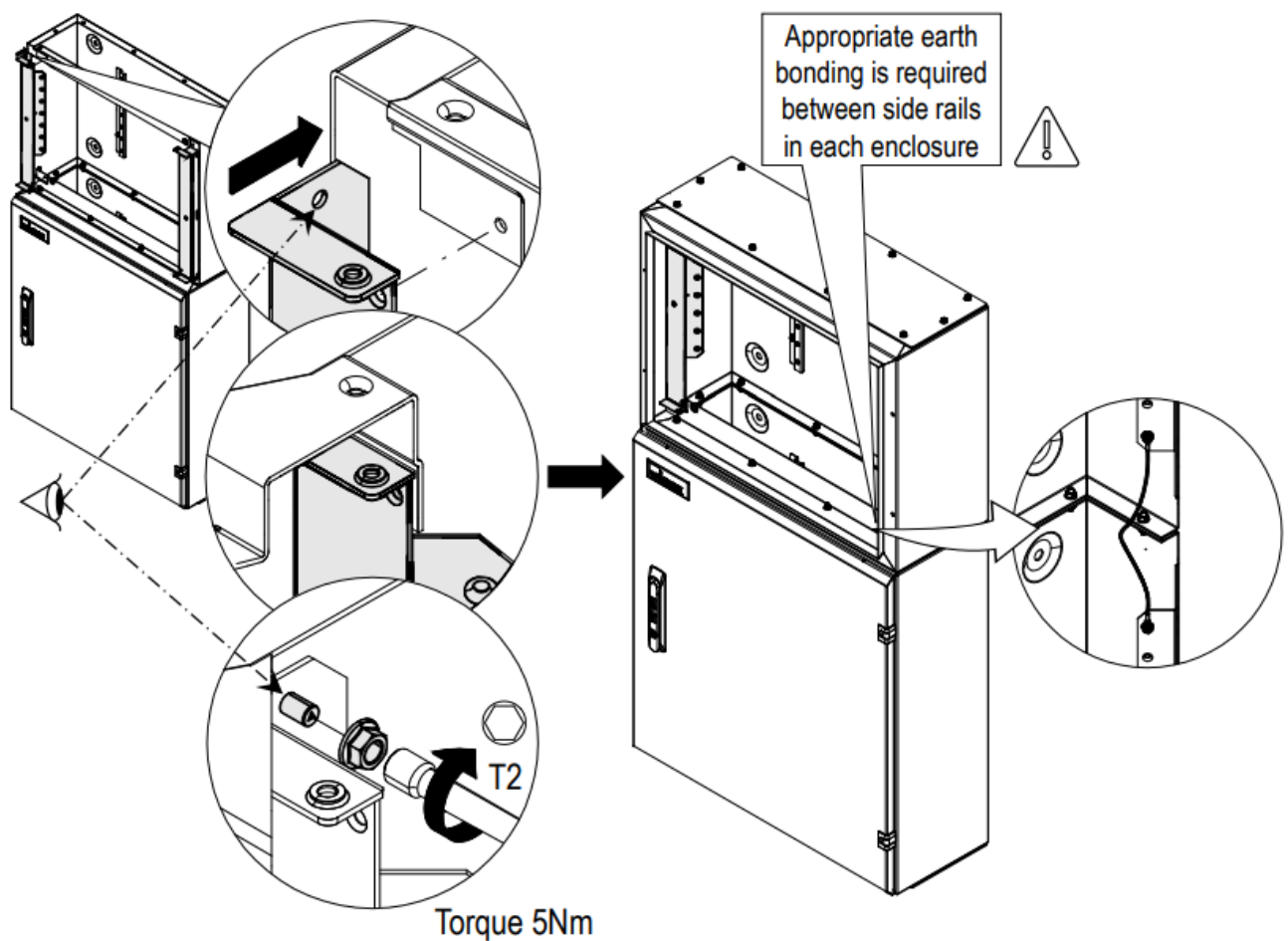
7. Remove the adhesive backing paper and stick the gasket to the joining face on the large enclosure.



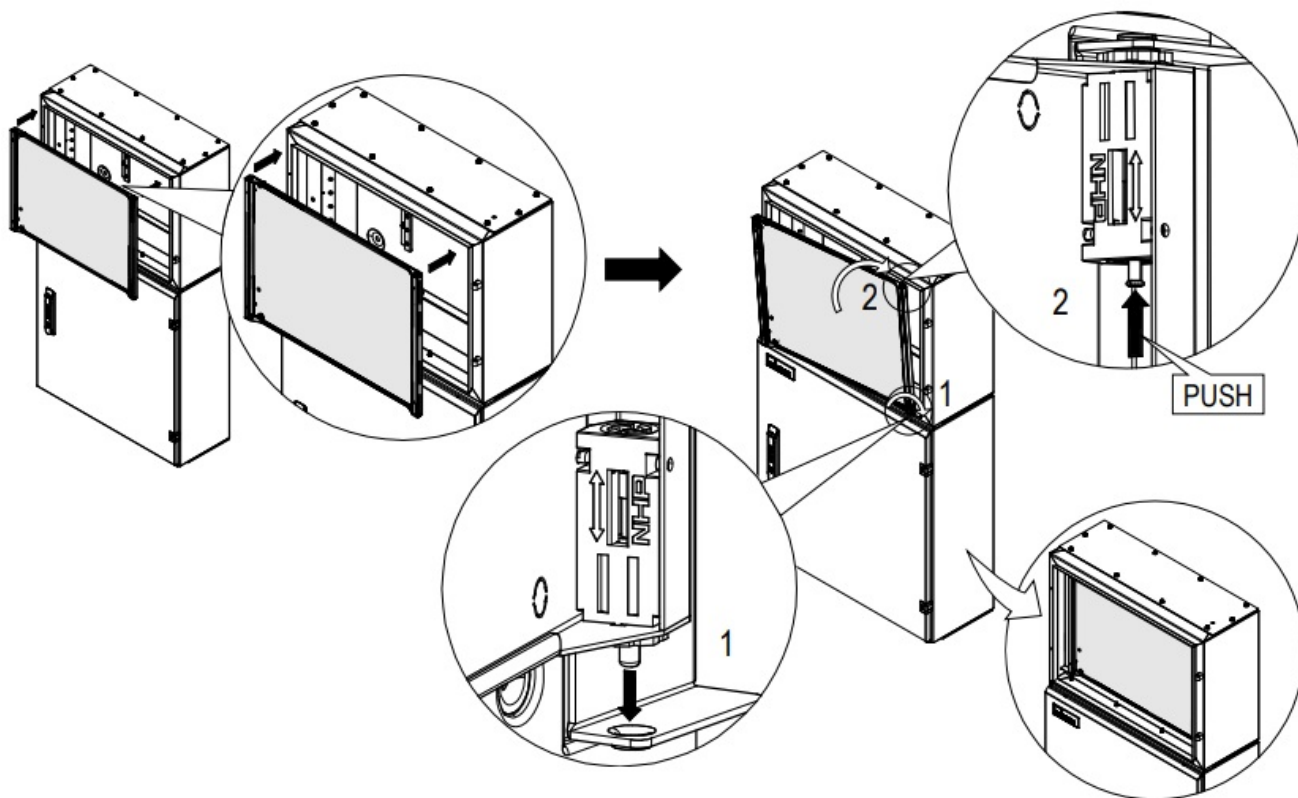
8. Align the two enclosures and secure using M5x16 screws from Step 4.



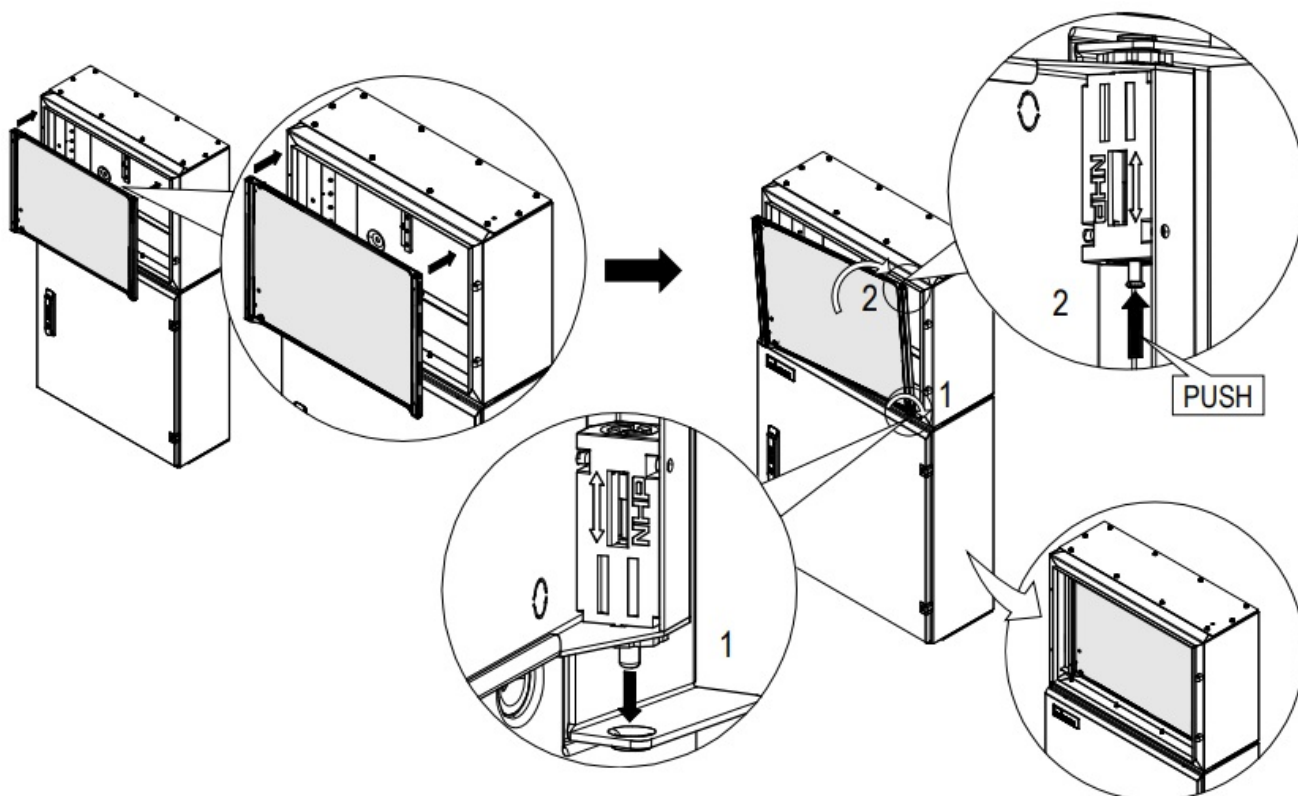
9. Reassemble the side rails into the smaller enclosure. Cross-section and top gland plate removed for clarity.

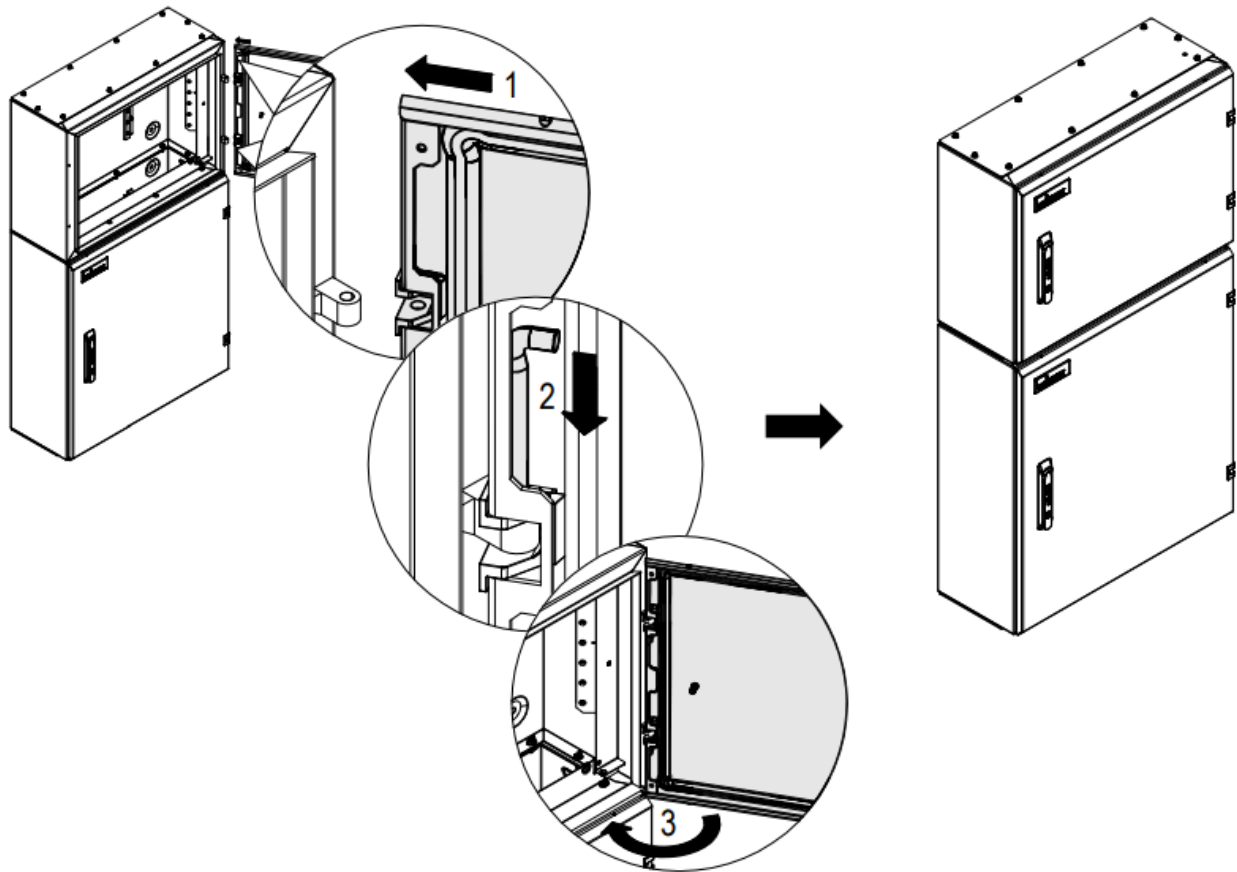


10. Reassemble the scutcheon into the smaller enclosure. Refer to CELES-IN-001-EN for scutcheon fitment (Steps 6-10).



11. Reassemble the door in the smaller enclosure.





NHP Electrical Engineering Products Pty Ltd

- A.B.N. 84 004 304 812
- IP66SEALINGENDONEND-IN-001-EN
- Copyright NHP 2025.03.26
-  AUS 1300 NHP NHP
- NZ 0800 NHP NHP
- nhp.com.au
- nhp-nz.com

FAQs

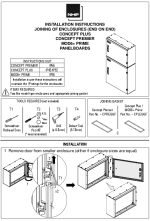
Q: Do I need to remove the earth strap on stainless steel Enclosures before removing the gland plate?

A: Yes, it is recommended to remove the earth strap on stainless steel enclosures before removing the gland plate.

Q: What is the recommended torque for securing the enclosures?

A: The recommended torque for securing the enclosures is 5Nm.

Documents / Resources

	NHP Concept Plus Panelboard [pdf] Instruction Manual CONCEPT PLUS, CONCEPT PREMIER, MOD6 PRIME, Concept Plus P anelboard, Panelboard
---	--

References

- [User Manual](#)

CONCEPT PLUS, Concept Plus Panelboard, CONCEPT PREMIER, MOD6 PRIME, NHP,
NHP Panelboard

Leave a comment

Your email address will not be published. Required fields are marked *

Comment *

Name

Email

Website

☐ Save my name, email, and website in this browser for the next time I comment.

Post Comment

Search:

e.g. whirlpool wrf535swhz

Search

[Manuals+](#) | [Upload](#) | [Deep Search](#) | [Privacy Policy](#) | [@manuals.plus](#) | [YouTube](#)

This website is an independent publication and is neither affiliated with nor endorsed by any of the trademark owners. The "Bluetooth®" word mark and logos are registered trademarks owned by Bluetooth SIG, Inc. The "Wi-Fi®" word mark and logos are registered trademarks owned by the Wi-Fi Alliance. Any use of these marks on this website does not imply any affiliation with or endorsement.