



NGTECO NG-C1200 Series Camera IP Cubo WiFi User Guide

[Home](#) » [NGTeco](#) » NGTECO NG-C1200 Series Camera IP Cubo WiFi User Guide 



Quick Start Guide
Model: NG-C1200 Series
Version: 1.0



Due to the regular upgrades of systems and products, NGTeco could not guarantee exact consistency between the actual product and the written information in this manual.

Contents

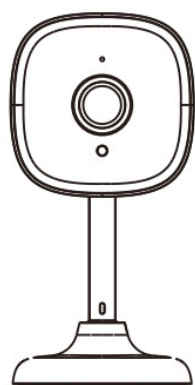
- [**1 Important Notes**](#)
- [**2 What's in the Box**](#)
- [**3 Product Overview**](#)
- [**4 Setup**](#)
- [**5 Watching the Videos from Browser**](#)
- [**6 Installation**](#)
- [**7 Product Features**](#)
- [**8 Documents / Resources**](#)
 - [**8.1 References**](#)

Important Notes

1. If you have any problems, please read this manual carefully or contact Customer Care.

2. The device can only connect to 2.4GHz Wi-Fi networks. If you have a dual-band router with separate 2.4GHz and 5GHz networks, make sure your phone is connected to the 2.4GHz network.
3. Make sure the entered Wi-Fi password is correct when adding a new device.
4. Please make sure the device is close to the router for a stable network connection.
5. Do not mount the camera before confirming a successful network connection and smooth live video.
6. We couldn't guarantee the exact consistency between the actual product and the written information in this manual due to the regular app and product updates.

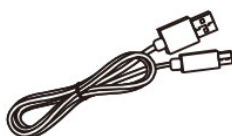
What's in the Box



Camera



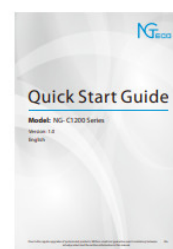
Power Adapter



USB Charging
Cable



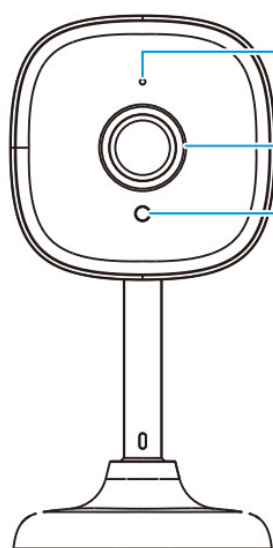
Screw Kit
(mounting
screws, anchors)



Quick Start
Guide

Note: The power plug may vary in different regions.

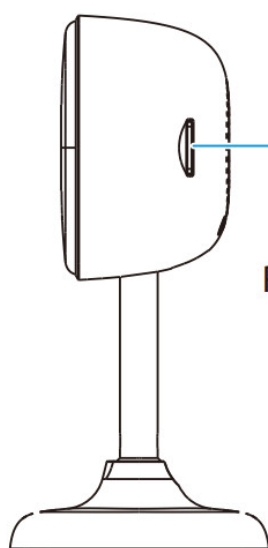
Product Overview



Microphone
/Status LED

Lens

Light Sensor

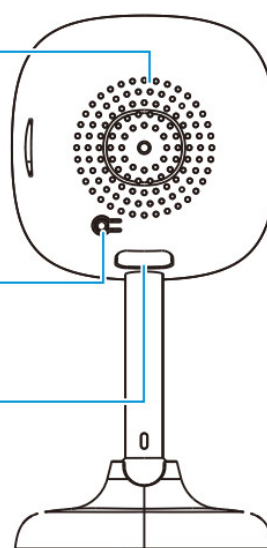


Speaker

Micro-SD
Card Slot

Reset Button

Power
Interface



Setup

Connecting the Device to NGTeco Home App

Step 1: Download the App and Register Your Account

Search for the NGTeco Home App in Apple App Store or Google Play Store and download the App to your mobile phone.

Open the NGTeco Home App and log in with your account. If you do not have an account, create an account with

your phone number or Email ID.



<https://a.smart321.com/ngtecongtecohome>

Step 2: Power on the Device

1. Plug the camera into the power socket using the provided power adapter and USB cable.
2. Wait for a few seconds until you hear the prompt "Camera start, please configure network".

Note: If you did not hear the prompt, press and hold the Reset Button for 5 seconds until you hear the prompt "Restore Factory Settings".

Step 3: Add the Device to the App

1. Open the app, tap the "+" button on the top right corner of the interface, and then select the "Add Device" option. Select the "Smart Camera" option and then choose the corresponding model purchased.
2. Tick "Next" if you have finished the above steps on the interface. Select the desired Wi-Fi and enter the correct password. Then tap the "Next" button.
3. Show the QR code towards the device lens, and the camera will scan the QR code. Once you hear the audio prompt "Camera configured, connecting to Network", tap the "I Heard a Prompt" button on your mobile, the App will connect the device automatically.

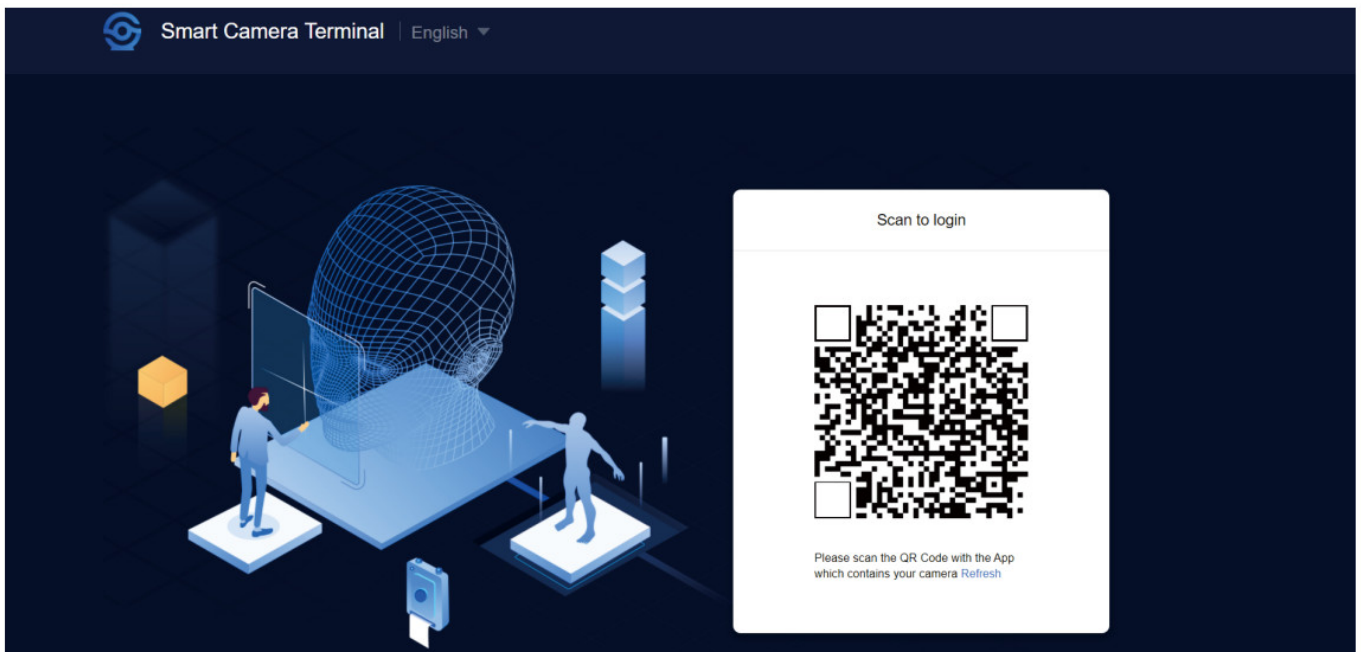
Note: Please hold the phone about 15-20 cm (6-8 inches) away from the camera. You can slightly move your mobile device forward and backward for better scanning.

4. You can manually change the name of the device once you see the message "Added successfully" on the mobile app. To finish the setting, tap the "Done" button.

Note: If you failed to connect your device to Wi-Fi, press and hold the RESET Button for 5 seconds until you hear the audio prompt "Restore Factory Settings", then repeat the above steps.

Watching the Videos from Browser

1. Visit <https://ipc-us.ismartlife.me>, and then select the corresponding data server on the top right corner of the interface.
2. Use NGTeco Home App to scan the QR code to login to your account.
3. Click the corresponding device to watch the live videos.



***Connecting the Device to Amazon Alexa or Google Assistant**

Tap the EDIT Button in the upper right corner of the device interface after successfully connecting the device to the NGTeco Home App. To link your NGTeco Home Account to Amazon Alexa or Google Assistant, select the Amazon Alexa or Google Assistant icon and follow the on-screen instructions. After completing the setup, you can use the supported voice commands that include:

- Echo, show me <device name>.
- Hey Google, show me <device name>.

Note:

1. Every time you change the name of a linked device, you must discover it again to update the name.
2. This voice control feature is optional, only the model NGC12XXA can support.

Installation

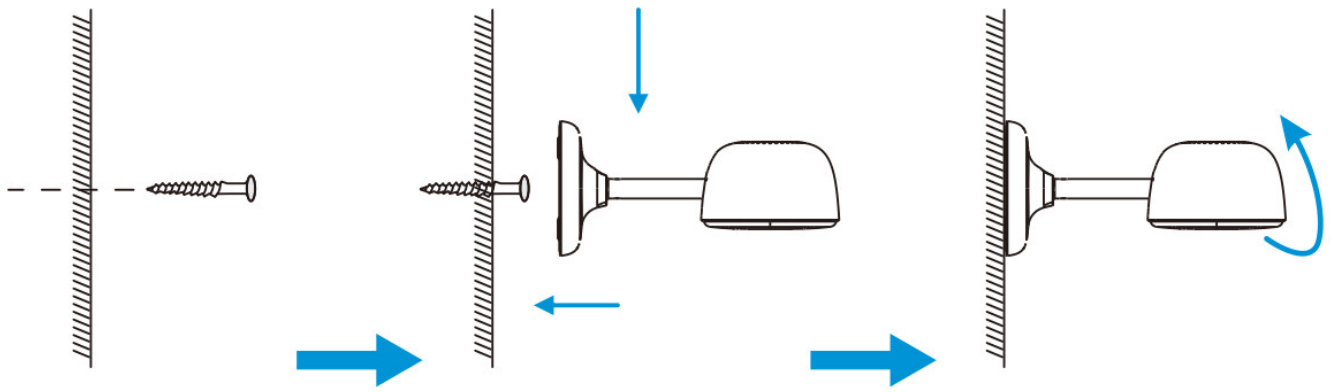
Installation Location

The device can be put on the ceiling or the wall, or it can be placed horizontally. Choose a location with a clear, unblocked field of view and with a good wireless signal to the device, and can reach a power outlet easily.

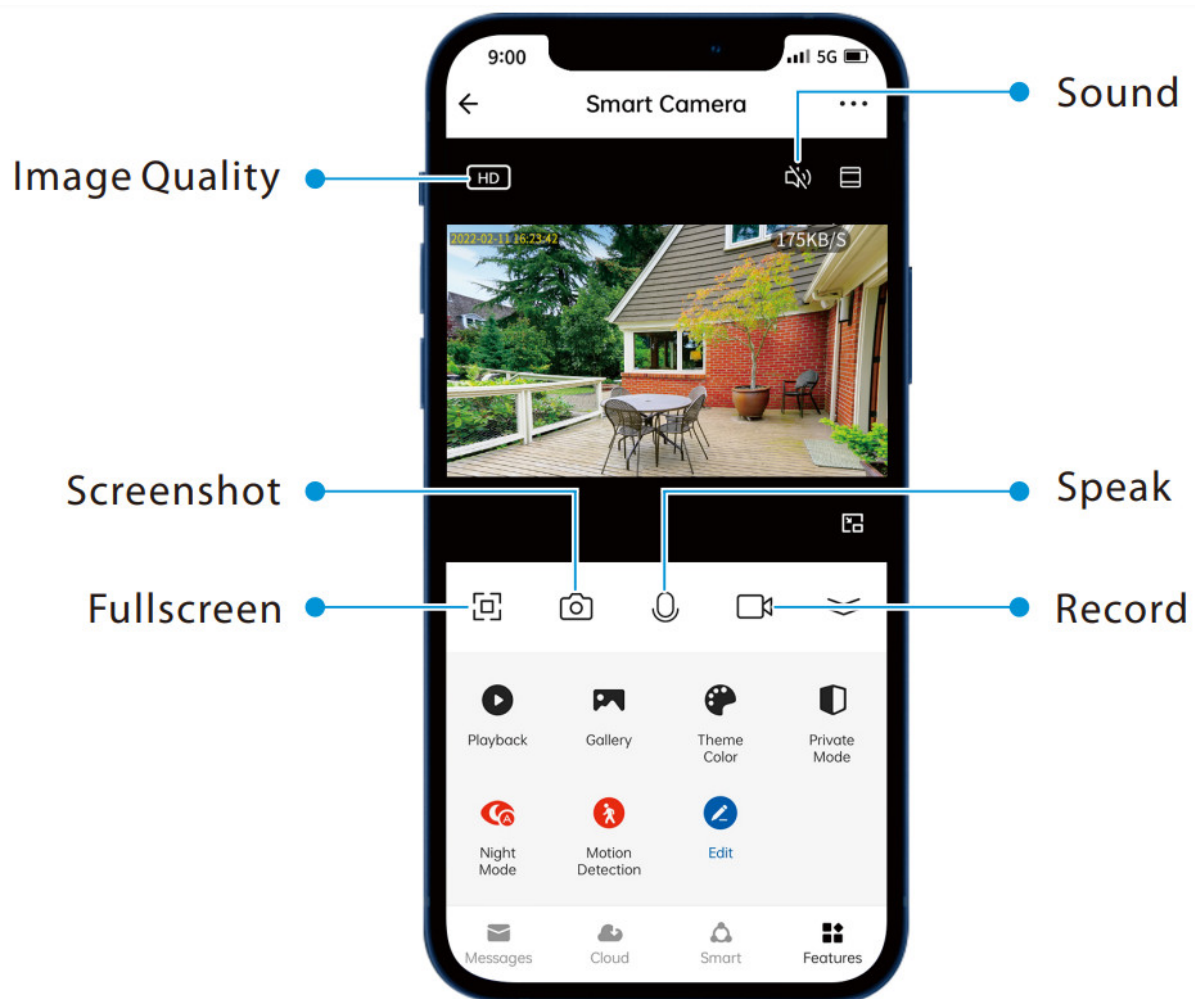
Installation Steps

After confirming a successful Wi-Fi connection and smooth live video, you can select the required position to mount the device. The installation steps are as follows:

1. Drill two holes in the wall according to the hole positions of camera base, and then insert the plastic anchor into the holes; anchors are necessary for walls that are made of hard materials such as concrete, brick or stucco. Leave some gap between the screws and the wall.
2. Align the screws with the grooves of the camera base, and then push the device down until it clicks into place.
3. Adjust the viewing angle by checking the live video in the mobile app.



Product Features



Main Interface:

Image Quality: To switch the image quality between HD and SD.

Sound: To mute or unmute the sound from the device.

Fullscreen: Tap it to switch to the full screen.

Screenshot: Capture a picture to the photo album in App.

Speak: Tap it to talk to people in front of the device.

Record: Manually record a video to the photo album in App.

Playback: Watch the recorded videos in the Micro-SD Card.

Gallery: Review the recorded photos when detecting the motion.

Theme Color: Change the UI theme to light mode or dark mode.

Private Mode: Disable the live videos with one click to protect your privacy.

Night Mode: Switch on/off the night vision mode or set it to Auto Mode.

Motion Detection: Enable or disable the alarm of motion detection.

***Cloud:** This Video Cloud Storage service is needed to pay for the monthly or annually subscription. You could

check the video from cloud storage with App anytime, anywhere. The cloud storage only supports recording the events video clips.

Smart: Manage the related smart automation settings.

More Settings:

Basic Settings:

- **Status Indicator:** The status LED can be set as ON or OFF.
- **Flip Screen:** Rotate the current monitoring image at 180 degrees.
- **Time Watermark:** Choose whether the monitoring interface displays the real time watermark.
- **Talk Mode:** To fit the actual requirements, select the oneway or two-way talk mode.

Detection Alarm Settings:

- **Motion Detection:** Enable or disable the alarm of motion detection.
- **Alarm Sensitivity Level:** The level can be set to High/Medium/Low modes as required.
- **Schedule:** Customize the schedule for the motion detection to be active.

Storage Settings: After inserting the Micro-SD card, you could check the status of storage capacity.

Recording Settings: Select the recording mode and set the schedule of the local recording.

***Voice Control:** To see live video from the Amazon Echo or Google Home device, use Amazon Alexa or Google Assistant voice commands. This feature is optional.

Offline Notification: It enables to receive the offline push message of the camera.

Remove Device: Remember to REMOVE the device from the current account when the owner of the camera changes.



Warning:

This device complies with Part 15 of the FCC Rules. Operation is subject to the following two conditions: (1) This device may not cause harmful interference, and (2) this device must accept any interference received, including interference that may cause undesired operation.

This equipment has been tested and found to comply with the limits for a Class B digital device, pursuant to Part 15 of the FCC Rules. These limits are designed to provide reasonable protection against harmful interference in a residential installation. This equipment generates, uses, and can radiate radio frequency energy and, if not installed and used in accordance with the instructions, may cause harmful interference to radio communications. However, there is no guarantee that interference will not occur in a particular installation. If this equipment does cause harmful interference to radio or television reception, which can be determined by turning the equipment off and on, the user is encouraged to try to correct the interference by one or more of the following measures:

- Reorient or relocate the receiving antenna.
- Increase the separation between the equipment and receiver.
- Connect the equipment into an outlet on a circuit different from that to which the receiver is connected.
- Consult the dealer or an experienced radio/TV technician for help.

FCC RF Radiation Exposure Statement:

- This Transmitter must not be co-located or operating in conjunction with any other antenna or transmitter.
- This equipment complies with RF radiation exposure limits set forth for an uncontrolled environment.

IMPORTANT! Any changes or modifications not expressly approved by the party responsible for compliance

could void the user's authority to operate the equipment.



1600 Union Hill Road Alpharetta, GA 30005

E-mail: service.ng@ngteco.com


www.ngteco.com

Copyright©2022 NGTECO CO., LIMITED. All rights reserved.



<http://ngteco.com>

Documents / Resources

	<p>NGTECO NG-C1200 Series Camera IP Cubo WiFi [pdf] User Guide</p> <p>NG-C1201, NG-C1200 Series Camera IP Cubo WiFi, NG-C1200 Series, Camera IP Cubo WiFi, Camera IP WiFi, IP Cubo WiFi, Camera</p>
--	--

References

- [NGTECO](#)
- ipc-us.ismartlife.me

Manuals+.