



## NGTECO H-N706F Smart Camera Version: 1.0 User Manual

[Home](#) » [NGTeco](#) » NGTECO H-N706F Smart Camera Version: 1.0 User Manual 



### Contents

- [1 NGTECO H-N706F Smart Camera Version: 1.0 User Manual](#)
- [2 Important Note](#)
- [3 Overview](#)
- [4 How to connect Smart Camera to NGTeco Home?](#)
- [5 Connect to camera through LAN cable](#)
- [6 Wi-Fi Camera Functions](#)
- [7 Documents / Resources](#)
  - [7.1 References](#)
- [8 Related Posts](#)

**NGTECO H-N706F Smart Camera Version: 1.0 User Manual**



## Important Note

1. Please make sure the device is connected to the power and your phone is connected with Wi-Fi.
2. Routers: If the router is a dual-band router the device does not support 5GHz network, please select a 2.4GHz network to add the device. You also need to enable the router broadcasting function.
3. Different kind of camera has different valid distance, NGC400/ NG-C500 within 8~15m; NG-C100/NG-C200 within 5~10m; NG-C300 within 5~8m.
4. Wireless Router: Set the encryption method as WPA2-PSK and authorization type as AES or set both as Auto. Please name the Wi-Fi router in English. To achieve better connectivity, please keep the device and router within a certain distance.
5. Check whether the devices connected to the router have achieved the maximum number. If so, please try to turn off the Wi-Fi connection of some devices.
6. Make sure the router wireless MAC filtering function is enabled.
7. Remove the device from the filter and make sure that the router is not prohibiting the device from the connection.
8. Make sure the entered Wi-Fi password is correct when adding a new device.

Due to regular upgrades of systems and products, NGTeco could not guarantee exact consistency between the actual product and the written information in this manual.

## Overview

Smart cameras, facial recognition devices and sirens, all these were seen at either banks or some high-profile office or building in the past. You can find one installed in homes or stores. Home security camera system have become one of the best way to keep your home safe. You can take care of your home without being actually there.

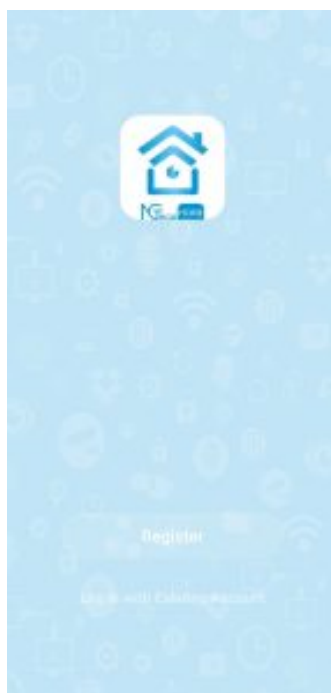
## How to connect Smart Camera to NGTeco Home?

### Step 1: Account Registration

Search the NGTeco HOME App in Apple App Store or Google Play Store and download the App to your mobile phone.



Open the NGTeco HOME App and log in with your account. If you do not have an account , create an account with your phone number or Email ID.



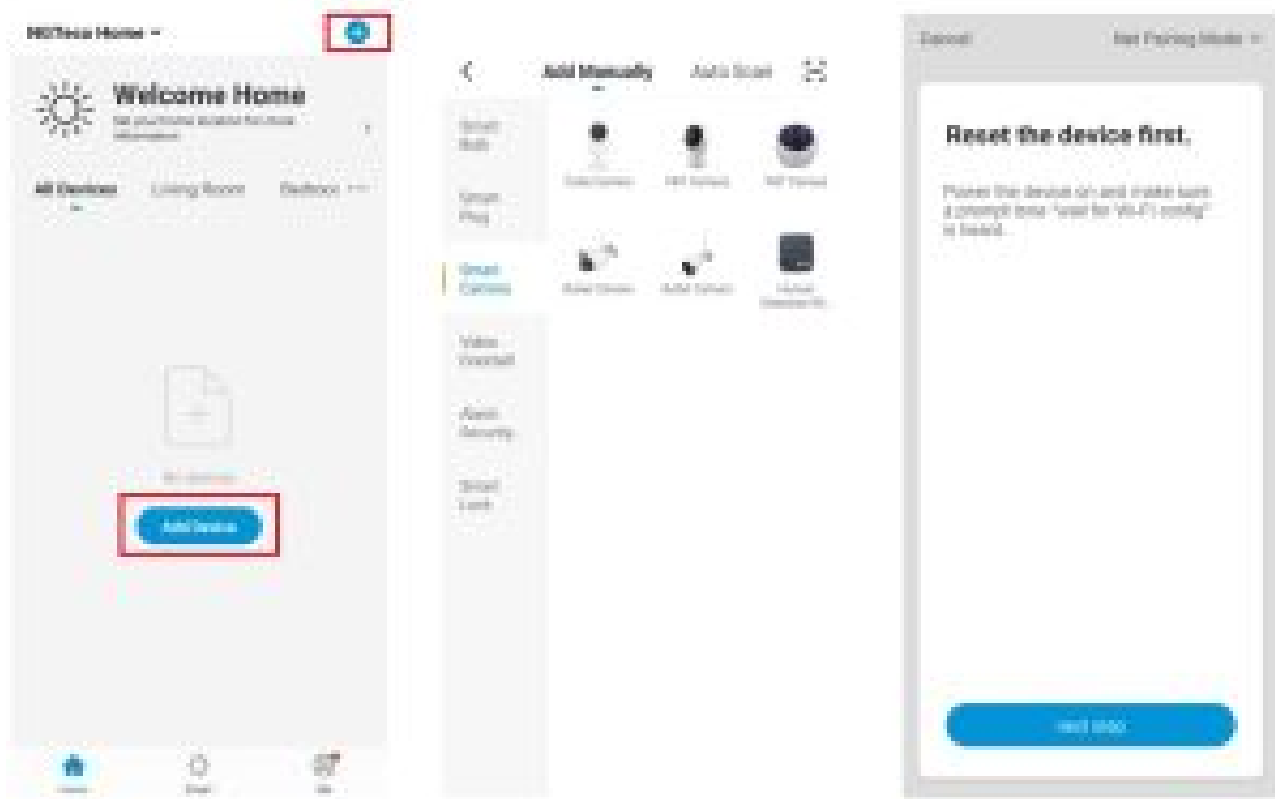
### Step 2: Power on the Camera

- Plug the camera into the power socket using the provided power adapter and USB cable.
- Wait for a few seconds until you hear the prompt **“Wait for Wi-Fi config”**.

**Note:** If you did not hear the prompt, please press and hold the **“Reset”** button until you hear the prompt **“Reset, Camera reboot”**.

### Step 3: Add the Camera to the App

Tap the “+” button on the top right corner of the interface, and then select the “Smart Camera” option and then choose the corresponding model purchased. Choose “Next Step” button on the next interface.



### Step 4: Add the Wi-Fi Details

Enter the Wi-Fi name and Password. Then tap the “Confirm” button.

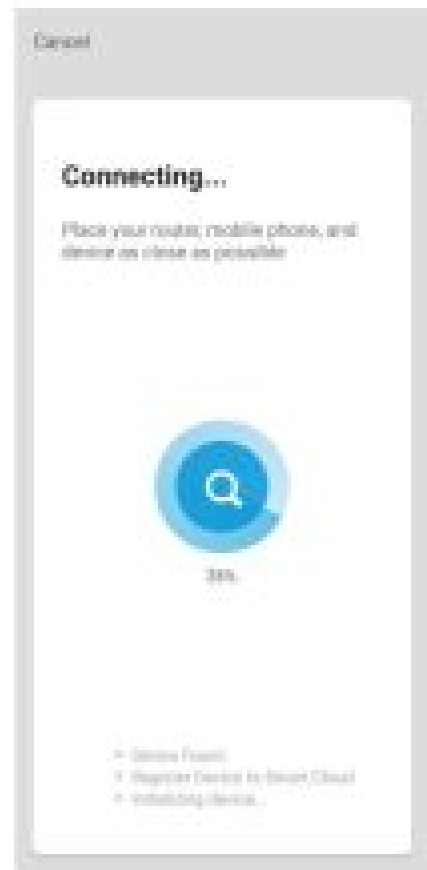
**Note:** The camera only works on 2.4GHz Wi-Fi networks.



### Step 5: Scan the QR Code

1. The App screen displays a QR code. Show the QR code towards the camera lens, and the camera will scan the QR code.
2. Once you hear the prompt "Connect router", tap the "I heard a prompt" button on your mobile, the App will connect the camera.

**Note:** Please hold the phone about 15 to 20 cm away from the camera.



### Step 6: Finish the Setup

Once you see the message “Added successfully” on the mobile app, you can edit the name of camera manually, tap the “Done” button to complete the setup.

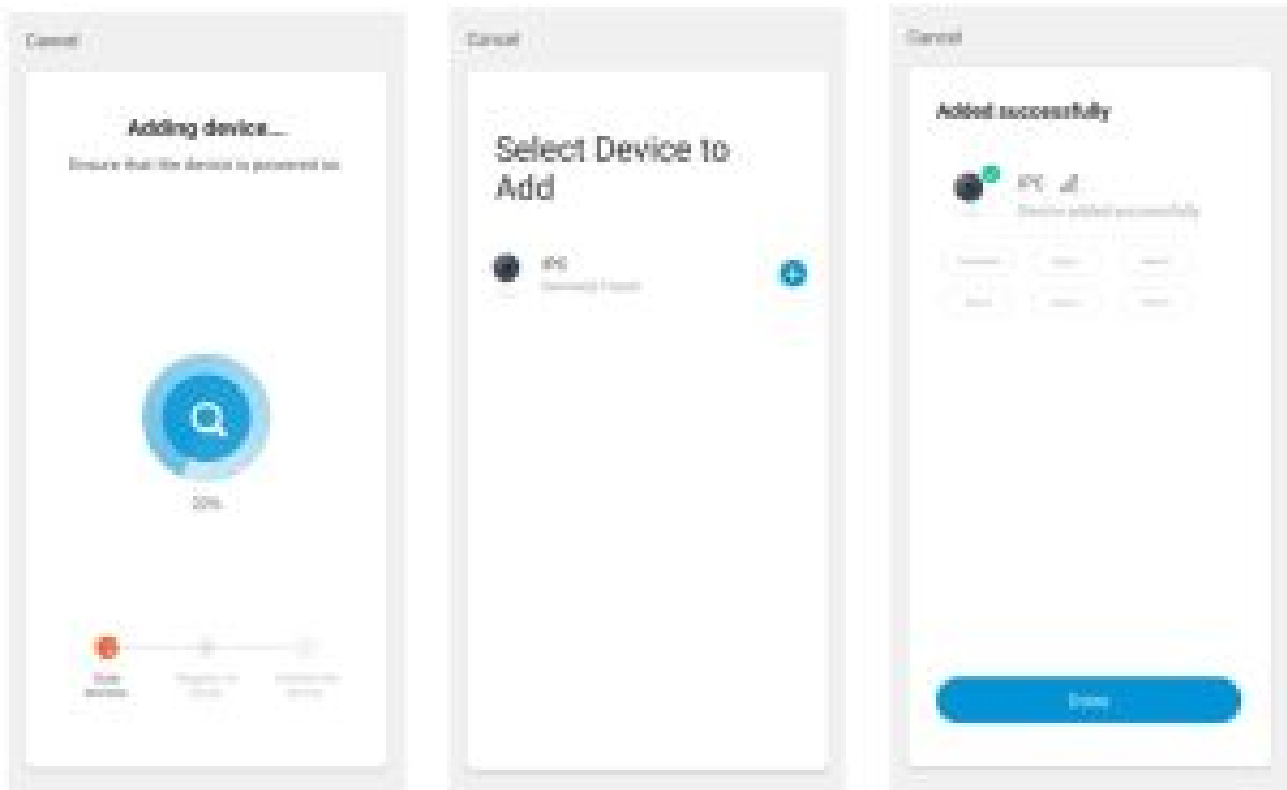


## Connect to camera through LAN cable

Connect your camera to a router with a LAN cable. Power on until you hear a prompt **“Connect to Internet”**, connect your smart phone to the router WiFi.

1. Tap “+” in the center or upper right corner.
2. Select your camera.
3. Click the upper right corner to change **“Net Pairing Mode”** to **“Cable”**.
4. Tap **“Next”**, the software will search your camera, wait for about 2 minutes.
5. Select device to add.
6. Name your camera, and click **“Done”**.





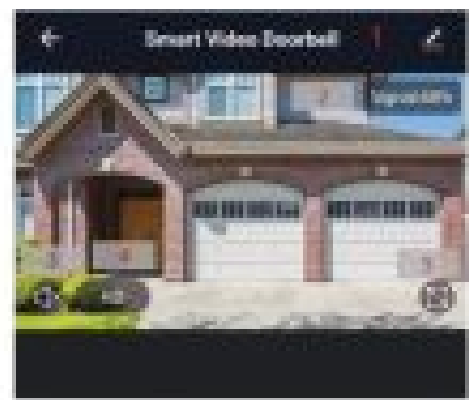
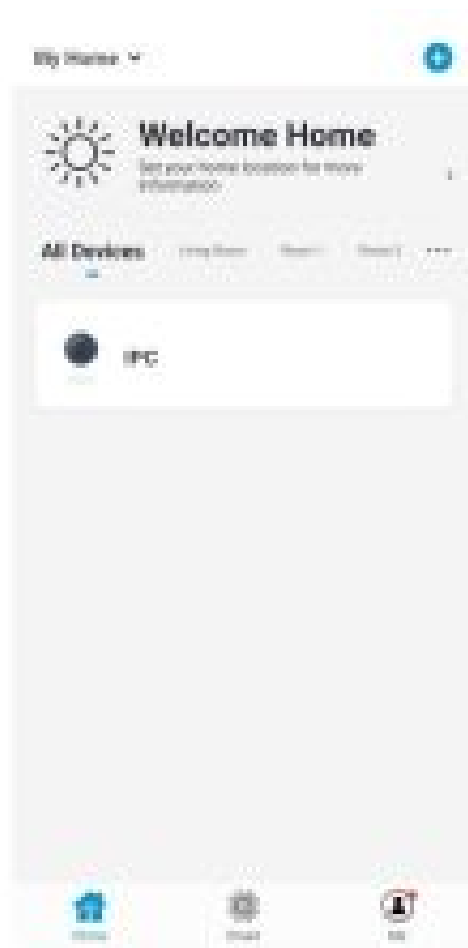
## Wi-Fi Camera Functions

The Wi-Fi Camera supports the following functions:

- Two-way Audio.
- Saves video recording to the local file.
- Captures the Playback Video image and save it to the
- Micro SD Card.

In the device list section, it shows all the devices connected successfully to the App. Click the corresponding device to view the live videos directly.





1. Settings and Management	2. Wi-Fi Signal Strength	3. Audio button
4. SD/HD	5. View Full Screen	6. Screenshot
7. Voice Chat	8. Record live view	9. Playback Video
10. Cloud Storage	11. PTZ Controls	12. Motion Detection Alarm
13. View Photo		

#### Note:

**PTZ control:** The camera can be arbitrarily rotated to give you a different perspective. You can move it up and down, or capture any corner you want to view (**only a part of camera support**).

**Motion detection alarm:** Abnormal report notification through intelligent detection of an anomaly in the home. You can go out confidently without any security concerns. You can set the alarm level according to the camera's field to obtain accurate results.



**Warning:**

This device complies with Part 15 of the FCC Rules. Operation is subject to the following two conditions: (1) This device may not cause harmful interference, and (2) this device must accept any interference received, including interference that may cause undesired operation.

This equipment has been tested and found to comply with the limits for a Class B digital device, pursuant to Part 15 of the FCC Rules. These limits are designed to provide reasonable protection against harmful interference in a residential installation. This equipment generates, uses, and can radiate radio frequency energy and, if not installed and used in accordance with the instructions, may cause harmful interference to radio communications. However, there is no guarantee that interference will not occur in a particular installation. If this equipment does cause harmful interference to radio or television reception, which can be determined by turning the equipment off and on, the user is encouraged to try to correct the interference by one or more of the following measures:

- Reorient or relocate the receiving antenna.
- Increase the separation between the equipment and receiver.
- Connect the equipment into an outlet on a circuit different from that to which the receiver is connected.
- Consult the dealer or an experienced radio/TV technician for help.

**IMPORTANT!** Any changes or modifications not expressly approved by the party responsible for compliance could void the user's authority to operate the equipment.

1600 Union Hill Road, Alpharetta, GA 30005

Tel: 770-800-2321(US)



[www.ngteco.com](http://www.ngteco.com)



Copyright©2020 NGTECO CO., LIMITED. All rights reserved.

**Read More About This Manual & Download PDF:**

Documents / Resources

<div></div> <div>User Manual Smart Camera Version 1.0</div>	<div><a href="#">NGTECO H-N706F Smart Camera Version: 1.0</a> [pdf] User Manual H-N706F, Smart Camera, Version 1.0</div>
<div></div> <div>User Manual Smart Camera Version 1.0</div>	<div><a href="#">NGTECO H-N706F Smart Camera Version: 1.0</a> [pdf] User Manual H-N706F, Smart Camera, Version 1.0</div>

References

-  [NGTECO](#)