



NGS-KEYBOARD-0368 Spell Kit Wireless Multi-Mode Keyboard and Mouse Set Instruction Manual

[Home](#) » [NGS](#) » NGS-KEYBOARD-0368 Spell Kit Wireless Multi-Mode Keyboard and Mouse Set Instruction Manual 

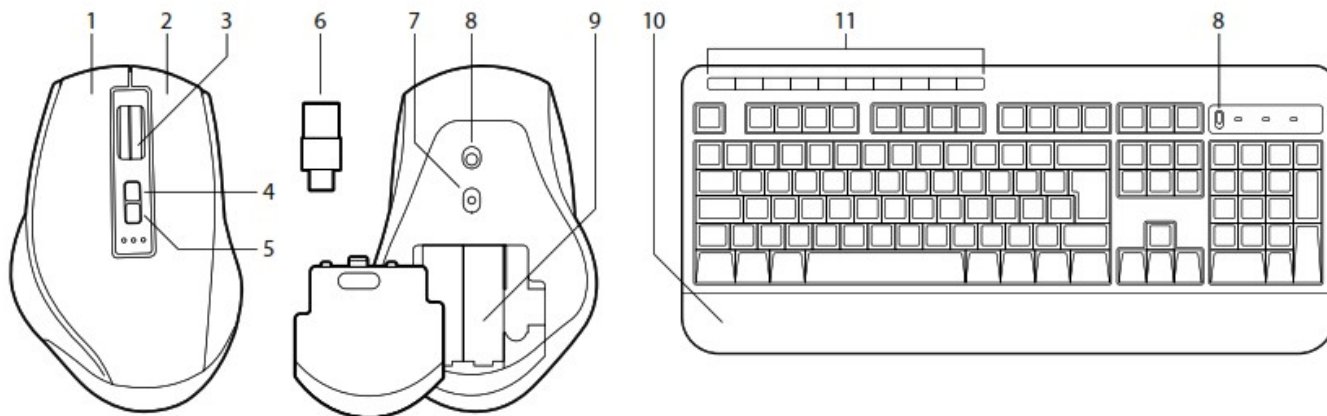


www.ngs.eu

Contents

- 1 SPELL KIT
- 2 TECHNICAL SPECIFICATIONS
- 3 DECLARATION OF CONFORMITY
- 4 Documents / Resources
 - 4.1 References
- 5 Related Posts

SPELL KIT



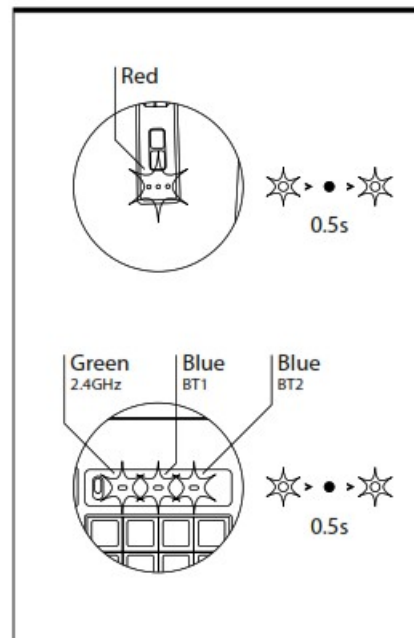
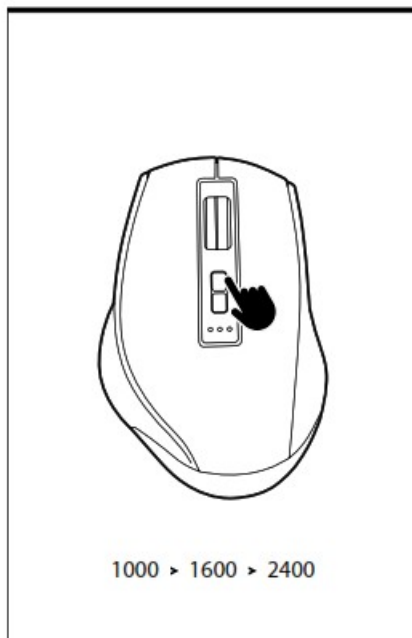
CONTROL BUTTONS

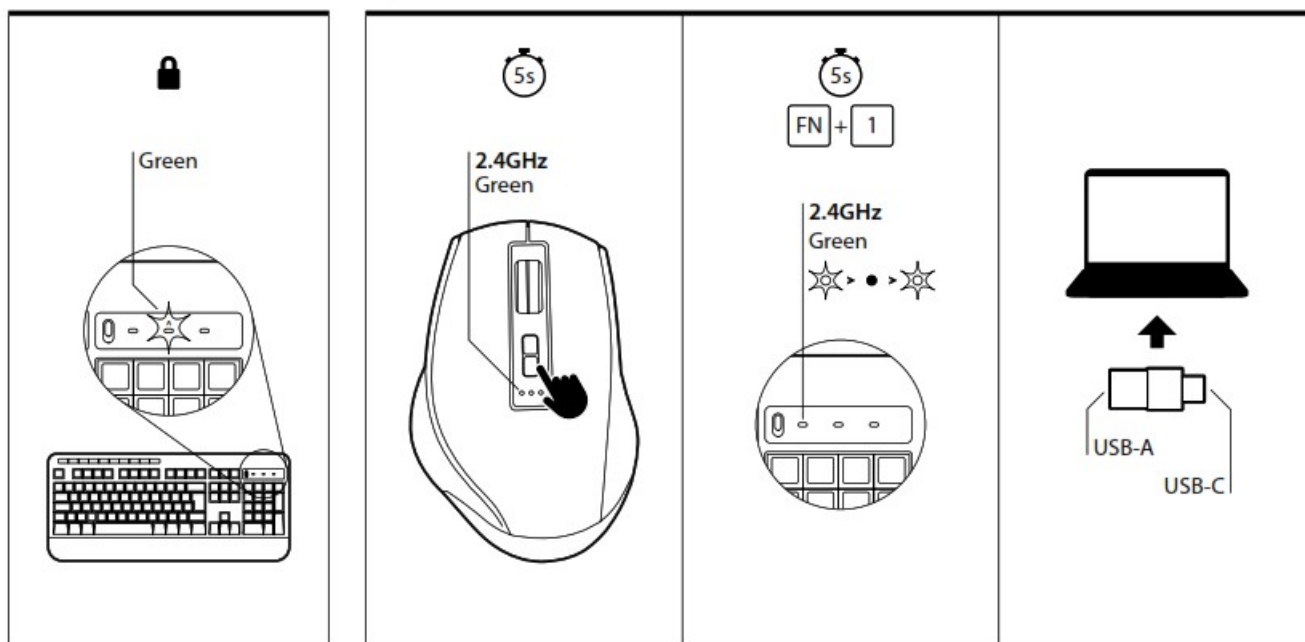
- 1. Left button
- 2. Right button
- 3. Scroll wheel
- 4. DPI button
- 5. Mode button
- 6. USB-A / USB-C receiver

- 7. Optical sensor
- 8. On/Off switch
- 9. Batteries compartment
- 10. Palm rest
- 11. Function keys

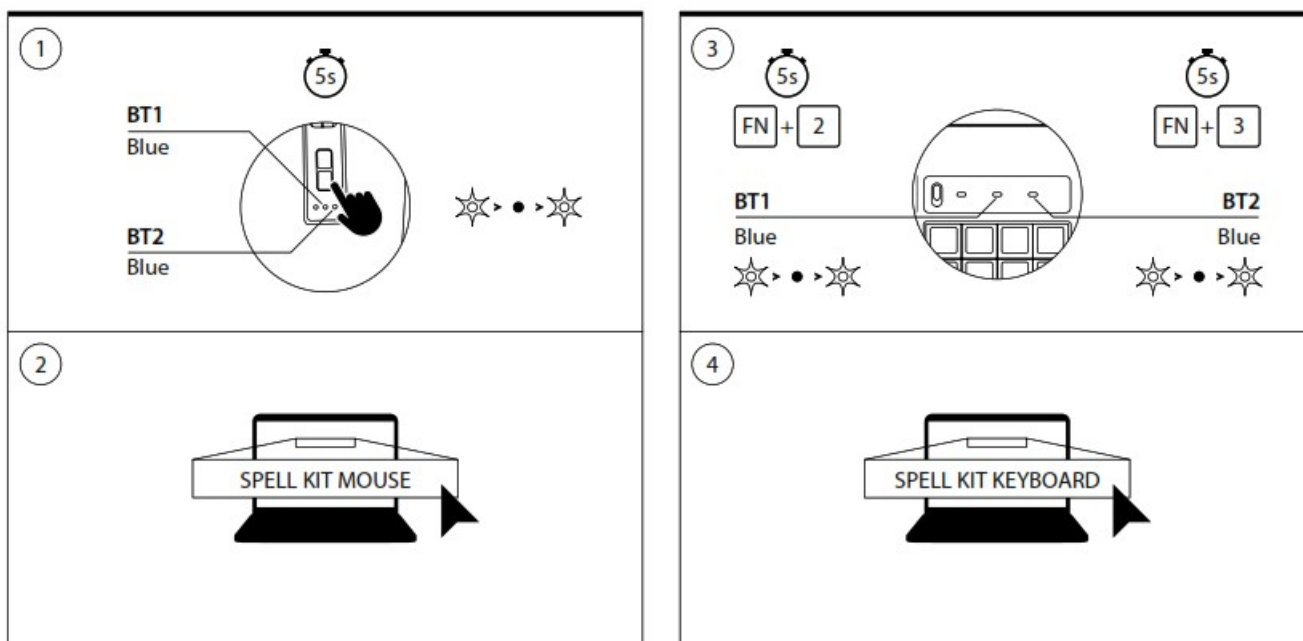


DPI



A

BT



TECHNICAL SPECIFICATIONS

KEYBOARD

- 2.4GHz+BT4.0+BT4.0 triple mode combo with power switch
- 8-10m range thanks to reliable wireless technology
- Auto power-saving mode
- Working current: $\leq 5\text{mA}$
- Idle current: $\leq 3\text{mA}$
- Sleeping current: $\leq 0.05\text{mA}$
- Mode indicator (2.4GHz mode indicator in green and blue for BT1 mode and BT 2 mode)
- Low power indicator (in green when low power in 2.4GHz mode and blue in BT1 mode)

- With cap lock indicator in green

Compatibility in 2.4GHz wireless mode: Windows 2000, Me, XP, Vista, Windows 7/8/10 Compatibility in BT 4.0 mode: Windows 8 or above

MOUSE

- 6 buttons + scroll mouse with adjustable dpi
- 1000/1600/2400 dpi
- Wireless frequency: 2402MHz-2480MHz
- Wireless transmission distance: 8-10 m
- Mouse rating working current: 10mA
- Idle current: $\leq 1\text{mA}$
- Sleeping current (idle for 5 seconds): $\leq 0.5\text{mA}$
- Mouse rating working voltage: 1.1-1.6V
- Power on/off switch at the bottom
- Dpi button on the top
- Mode indicator in white
- Low power indicator in red

Compatibility in 2.4GHz wireless mode: Windows 2000, Me, XP, Vista, Windows 7/8/10 Compatibility in BT 4.0 mode: Windows 8 or above



If at any time in the future you should need to dispose of this product please note that: Waste electrical products should not be disposed of with household waste. Please recycle where facilities exist.

Check with your Local Authority or retailer for recycling advice. (Waste Electrical and Electronic Equipment Directive)

DECLARATION OF CONFORMITY

WE, AUTHORIZED REPRESENTATIVE, **LURBE GRUP S.A**, SAN SEBASTIAN, SPAIN, DECLARE UNDER OUR SOLE RESPONSIBILITY THAT THE FOLLOWING PRODUCT:

NGS: **KEYBOARD + MOUSENGS** / MODEL: **SPELL KIT**

HAS BEEN TESTED AND FOUND IN CONFORMITY WITH THE FOLLOWING HARMONIZED EUROPEAN STANDARDS:

EN 55032: 2015.....ETSI EN 301 489-1 V2.1.1
 EN 55024: 2010 + A1: 2015ETSI EN 301 489-3 V2.1.1
 EN 61000-3-2: 2014.....ETSI EN 300 440 V2.1.1
 EN 61000-3-3: 2013..... JEC 62321
 EN 62479: 2010
 EN 60950-1: 2006 + A11: 2009 + A1: 2010 + A12: 2011 + A2: 2013

AND THEREFORE COMPLY WITH THE ESSENTIAL REQUIREMENTS AND PROVISIONS OF THE FOLLOWING DIRECTIVES OF THE EUROPEAN PARLIAMENT AND EUROPEAN COUNCIL:



AUTHORIZED REPRESENTATIVE: LURBE GRUP S.A PORTUETXE 27 20018 SAN SEBASTIAN
(GUIPUZCOA) SPAIN

SAN SEBASTIAN, FEBRUARY 15TH, 2021

SIGNED

NESTOR ALZUGARAY
PRODUCT MANAGER



technical support: www.ngs.eu/support
www.ngs.eu

Documents / Resources



[NGS NGS-KEYBOARD-0368 Spell Kit Wireless Multi-Mode Keyboard and Mouse Set](#) [pdf]

Instruction Manual

NGS-KEYBOARD-0368, Spell Kit Wireless Multi-Mode Keyboard and Mouse Set

References

- [NGS | Altavoces y auriculares compatible Bluetooth, teclados, ratones y más ...](#)
- [NGS](#)