



[Home](#) » [Nexxt Solutions](#) » **NEXXT SOLUTIONS NHC-OP3ODL Camera App User Guide** 

Contents [[hide](#)]

[1 NEXXT SOLUTIONS NHC-OP3ODL Camera App](#)

[2 FCC WARNING](#)

[3 Documents / Resources](#)

[3.1 References](#)



NEXXT SOLUTIONS NHC-OP3ODL Camera App



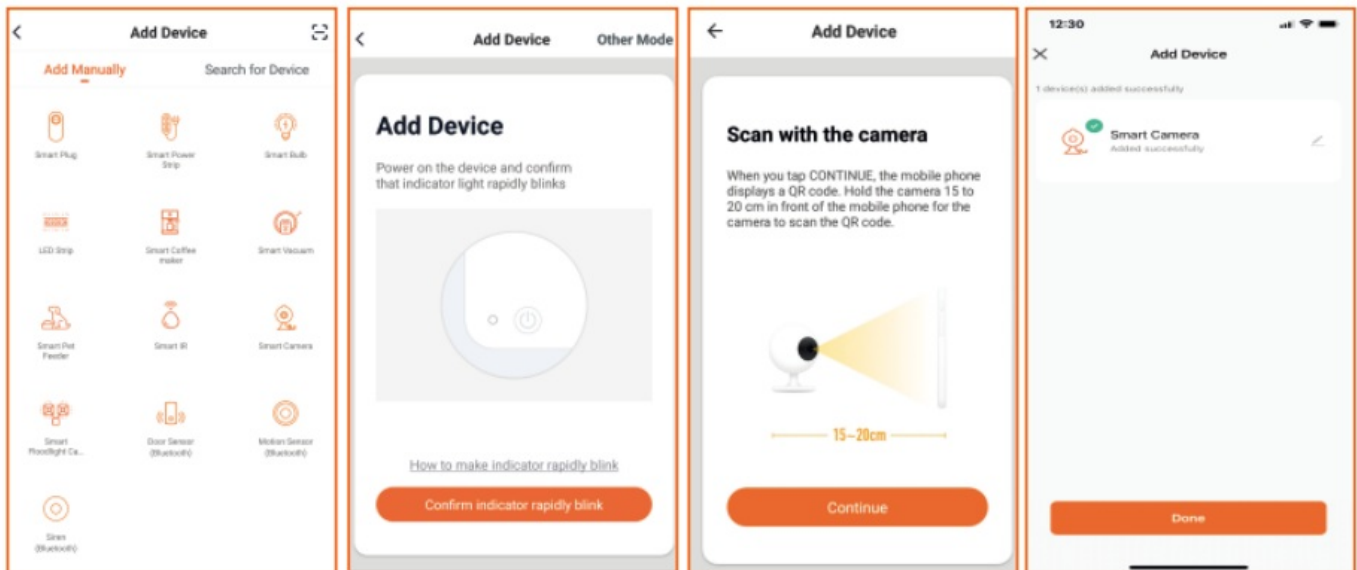
Scan the QR code or download the Nexxt Home app from the Google Play Store or Apple App Store.



Connect your mobile device to a Wi-Fi network.



Launch the Nexxt Home app and follow the in-app instructions to connect the smart camera to your home network.



Support: If you encounter any issues during installation or configuration, please visit www.nexxtsolutions.com/support for web support. You can also go to www.nexxtsolutions.com/nexxthome to download full product manual.

FCC WARNING

This device complies with part 15 of the FCC Rules. Operation is subject to the following two conditions:

1. This device may not cause harmful interference, and
2. This device must accept any interference received, including interference that may cause undesired operation.

Any changes or modifications not expressly approved by the party responsible for compliance could void the user's authority to operate the equipment.

NOTE: This equipment has been tested and found to comply with the limits for a Class B digital device, pursuant to Part 15 of the FCC Rules. These limits are designed to


provide reasonable protection against harmful interference in a residential installation. This equipment generates, uses, and can radiate radio frequency energy and, if not installed and

Using the instructions may cause harmful interference to radio communications. However, there is no guarantee that interference will not occur in a particular installation.

If this equipment does cause harmful interference to radio or television reception, which can be determined by turning the equipment off and on. The user is encouraged to try to correct the interference by one or more of the following measures:

1. Orient or relocate the receiving antenna.
2. Increase the separation between the equipment and receiver.
3. Connect the equipment to an outlet on a circuit different from that to which the receiver is connected.
4. Consult the dealer or an experienced radio/TV technician for help. To maintain compliance with FCC's RF Exposure guidelines, this equipment should be installed and operated with a minimum distance between 20cm the radiator of your body: Use only the supplied antenna.

Documents / Resources

	NEXXT SOLUTIONS NHC-OP3ODL Camera App [pdf] User Guide HACOP30DL, X4YHACOP30DL, NHC-OP3ODL Camera App, NHC-OP3ODL, Camera App, App
---	---

References

- [User Manual](#)

📁 Nexxt Solutions

📎 app, Camera App, HACOP30DL, Nexxt Solutions, NHC-OP3ODL, NHC-OP3ODL Camera App, X4YHACOP30DL

Leave a comment

Your email address will not be published. Required fields are marked *

Comment *

Name

Email

Website

☐ Save my name, email, and website in this browser for the next time I comment.

Post Comment

Search:

Search

[Manuals+](#) | [Upload](#) | [Deep Search](#) | [Privacy Policy](#) | [@manuals.plus](#) | [YouTube](#)

This website is an independent publication and is neither affiliated with nor endorsed by any of the trademark owners. The "Bluetooth®" word mark and logos are registered trademarks owned by Bluetooth SIG, Inc. The "Wi-Fi®" word mark and logos are registered trademarks owned by the Wi-Fi Alliance. Any use of these marks on this website does not imply any affiliation with or endorsement.