

NEXXT SOLUTIONS NHC-B200 ST Smart Wi-Fi Two Way Video Camera User Guide

Contents

- [1 NHC-B200 ST Smart Wi-Fi Two Way Video Camera](#)
 - [1.1 Camera NHC-B200ST](#)
 - [1.2 Quick setup guide](#)
- [2 Documents / Resources](#)
 - [2.1 References](#)
- [3 Related Posts](#)

NHC-B200 ST Smart Wi-Fi Two Way Video Camera

Camera NHC-B200ST



Quick setup guide



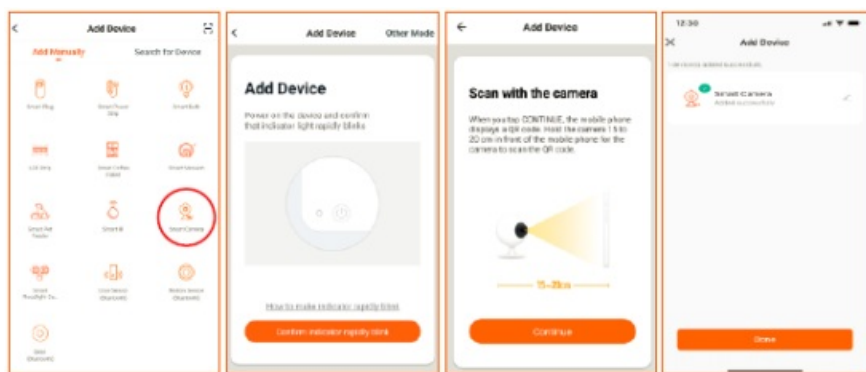
1 Scan the QR code or download the nexxt home app from google play store or Apple APP Store.



2 Connect your mobile device to a WI-FI network.



3 Launch the Nexxt Home app and follow the in-app instructions to connect the smart camera to your home network.



Support: If you encounter any issues during installation or configuration, please visit [www.nexxtsolutions.com/ support](http://www.nexxtsolutions.com/support) for web support. You can also go to www.nexxtsolutions.com/nexxthome to download full product manual.

FCC WARNING

This device complies with part 15 of the FCC Rules, Operation is subject to the following two conditions:

(A) this device may not cause harmful interference, and

(2) this device must accept any interference received, including interference that may cause undesired operation,

Any changes or modifications not expressly approved by the party responsible for compliance could void the user's authority to operate the equipment.

NOTE: This equipment has been tested and found to comply with the limits for a Class & digital device, pursuant to Part 15 of the FCC Rules, these limits are designed to provide reasonable protection against harmful interference in a residential installation, This equipment generates, uses and can radiate radio frequency energy and, if not installed and used in accordance with the instructions, may cause harmful interference to radio communications,

However, there's no guarantee that interference will not occur in @ particular installation, if this equipment does cause harmful interference to radio or television reception, which can be determined by turning the equipment off and on, the user is encouraged to try to correct the interference by one or more of the following measures

- Reorient or relocate the receiving antenna,
- Increase the separation between the equipment and receiver.
- Connect the equipment into an outlet on a circuit different from that to which the receiver is connected.
- Consult the dealer or an experienced radio/TV technician for help,

To maintain compliance with FCC's RF Exposure guidelines, this equipment should be installed and operated with` minimum distance between 20cm the radiator your body. Use only the supplied antenna.

Documents / Resources



[NEXXT SOLUTIONS NHC-B200 ST Smart Wi-Fi Two Way Video Camera](#) [pdf] User Guide
NHC-B200 ST, NHC-B200 ST Smart Wi-Fi Two Way Video Camera, Smart Wi-Fi Two Way Video Camera, Wi-Fi Two Way Video Camera, Two Way Video Camera, Video Camera

References

- [User Manual](#)

[Manuals+](#), [Privacy Policy](#)

This website is an independent publication and is neither affiliated with nor endorsed by any of the trademark owners. The "Bluetooth®" word mark and logos are registered trademarks owned by Bluetooth SIG, Inc. The "Wi-Fi®" word mark and logos are registered trademarks owned by the Wi-Fi Alliance. Any use of these marks on this website does not imply any affiliation with or endorsement.