

NEXXT
SOLUTIONS
Nexxt
Home App
For Camera



NEXXT SOLUTIONS Nexxt Home App For Camera User Guide

[Home](#) » [Nexxt Solutions](#) » NEXXT SOLUTIONS Nexxt Home App For Camera User Guide 

Contents

- 1 NEXXT SOLUTIONS Nexxt Home App For Camera
- 2 APP INSTRUCTIONS
- 3 MORE INFORMATION
- 4 FCC
- 5 Documents / Resources
 - 5.1 References



NEXXT SOLUTIONS Nexxt Home App For Camera



APP INSTRUCTIONS

1. Scan the QR code or download the Next Home app from the Google Play Store or Apple App Store.

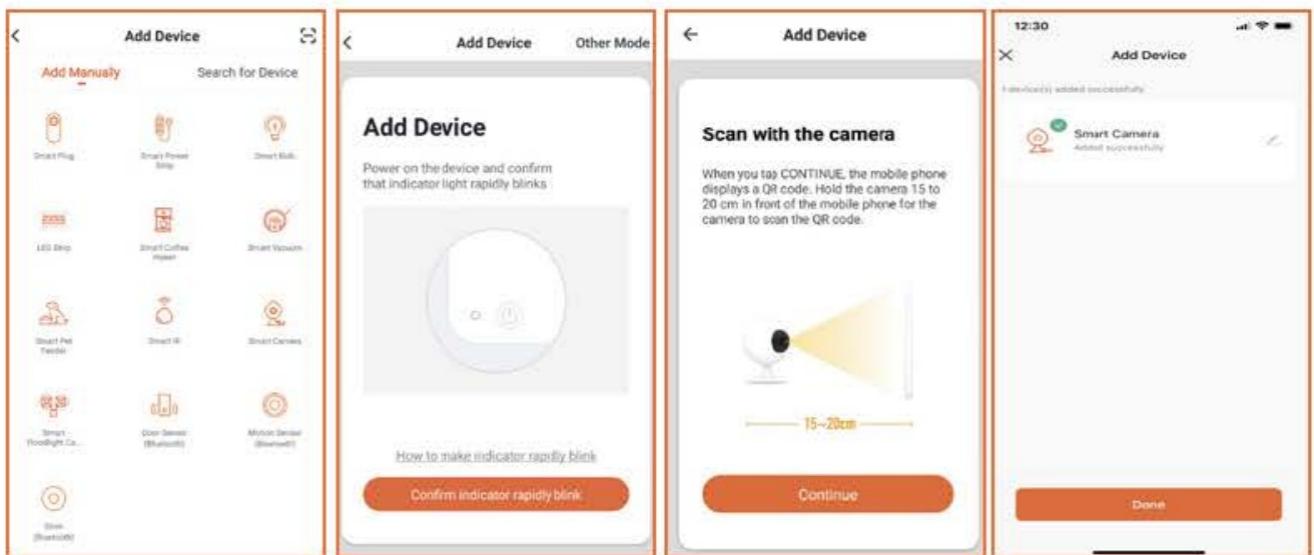


2. Connect your mobile device to a 2.4GHz Wi-Fi network.



- Note: The smart camera only supports 2.4GHz networks.

3. Launch the Next Home app and follow the in-app instructions to connect the smart camera to your home NETWORK



MORE INFORMATION

- **Support:** If you encounter any issues during installation or configuration, please visit
 - www.nexxtsolutions.com/support for web support. You can also go to
 - www.nexxtsolutions.com/nexxthome to download full product manual.

FCC

FCC Warning Statement

Changes or modifications not expressly approved by the party responsible for compliance could void the user's authority to operate the equipment. This equipment has been tested and found to comply with the limits for a Class B digital device, pursuant to Part 15 of the FCC Rules. These limits are designed to provide reasonable protection against harmful interference in a residential installation. This equipment generates uses and can radiate radio frequency energy and, if not installed and used in accordance with the instructions, may cause harmful interference to radio communications. However, there is no guarantee that interference will not occur in a particular installation. If this equipment does cause harmful interference to radio or television reception, which can be determined by turning the equipment off and on, the user is encouraged to try to correct the interference by one or more of the following measures:

- Reorient or relocate the receiving antenna.
- Increase the separation between the equipment and the receiver.
- Connect the equipment to an outlet on a circuit different from that to which the receiver is connected.
- Consult the dealer or an experienced radio/TV technician for help.


FCC Radiation Exposure Statement

The antennas used for this transmitter must be installed to provide a separation distance of at least 20 cm from all persons and must not be co-located for operating in conjunction with any other antenna or transmitter.

This device complies with Part 15 of the FCC Rules. Operation is subject to the following two conditions:

1. This device may not cause harmful interference, and
2. This device must accept any interference received, including interference that may cause undesired operation.

Documents / Resources

	<p>NEXXT SOLUTIONS Nexxt Home App For Camera [pdf] User Guide Nexxt Home App For Camera, App For Camera, Camera</p>
---	---

References

- [User Manual](#)

Manuals+, Privacy Policy

This website is an independent publication and is neither affiliated with nor endorsed by any of the trademark owners. The "Bluetooth®" word mark and logos are registered trademarks owned by Bluetooth SIG, Inc. The "Wi-Fi®" word mark and logos are registered trademarks owned by the Wi-Fi Alliance. Any use of these marks on this website does not imply any affiliation with or endorsement.