



NEXXT SOLUTIONS HACF610 Smart Flood Light Wi-Fi Camera User Guide

[Home](#) » [Nexxt Solutions](#) » NEXXT SOLUTIONS HACF610 Smart Flood Light Wi-Fi Camera User Guide 

Contents

- [1 NEXXT SOLUTIONS HACF610 Smart Flood Light Wi-Fi Camera](#)
- [2 Safety information](#)
- [3 Product overview](#)
- [4 Package content](#)
- [5 Initial inspection](#)
- [6 How it all fits together](#)
- [7 How it all fits together](#)
- [8 Federal Communications Commission \(FCC\) Statement](#)
- [9 Documents / Resources](#)
- [10 Related Posts](#)



NEXXT SOLUTIONS HACF610 Smart Flood Light Wi-Fi Camera



User guide

Thank you for purchasing the Smart floodlight WI-Fi camera from Nexxt Solutions. We are excited in being a part of making your life easier, safer and bringing peace of mind inside and outside your home.

Safety information

Precautions

Please read and understand this entire manual before attempting to assemble, install and operate this smart light fixture.

This smart light fixture requires 110-220 volt AC.

Installation and wiring should be performed by a qualified electrician. Do not attempt to perform installation if you are not familiar with hardwired electrical connections.

Improper installation can lead to loss of warranty.

This smart light fixture must be properly grounded.

This light fixture is intended for use with the enclosed gasket and with a junction box marked for use in wet locations.

For proper operation, this smart light fixture should be:

- Installed outdoors to a wall or eaves
- Installed 8ft. (2.4m) above the ground (if the light fixture is mounted higher than recommended height, aiming the sensor down will reduce the coverage area.)

WARNING:

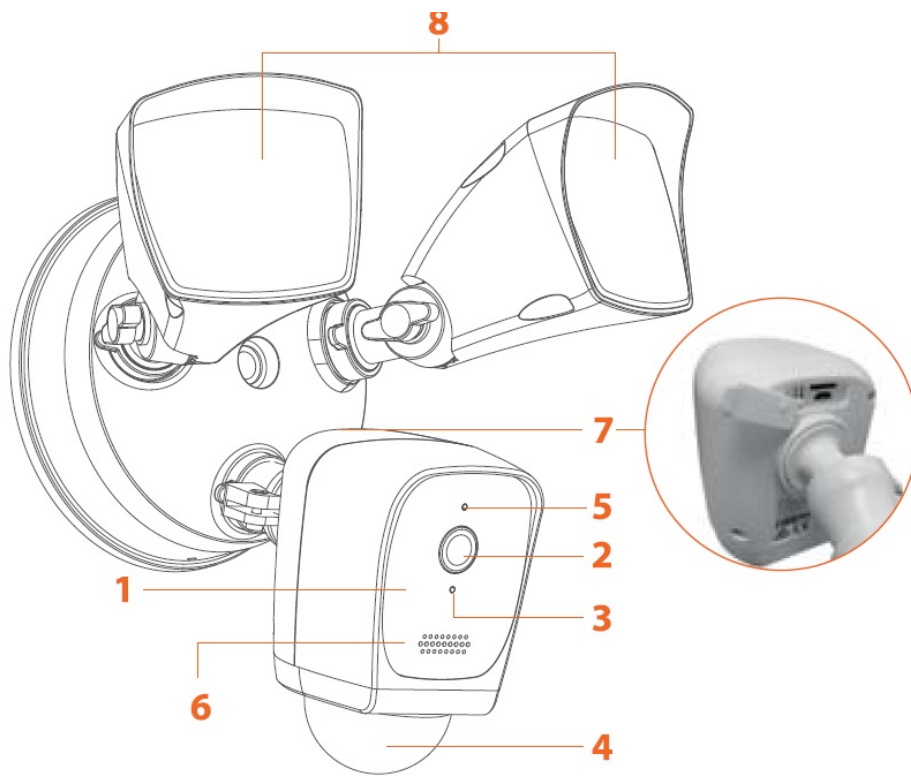
- Turn the power off at the circuit breaker or fuse.
Place tape over the circuit breaker switch and verify power is off at the light.
- WARNING: Risk of fire. Keep the bulbs at least 2in (51 mm) from combustible materials.
- WARNING: Keep the motion sensor at least 1 in (25mm) away from the bulbs.
- WARNING: To avoid water damage and risk of electric shock, the motion sensor control must be facing the ground when installation is complete.
- WARNING: Burn hazard. Allow the light fixture and the bulb to cool before touching
- WARNING: Do not connect the light fixture to a dimmer switch or timer.

Product overview

1. Infrared LED array: for night vision
2. Camera lens
3. LED status light

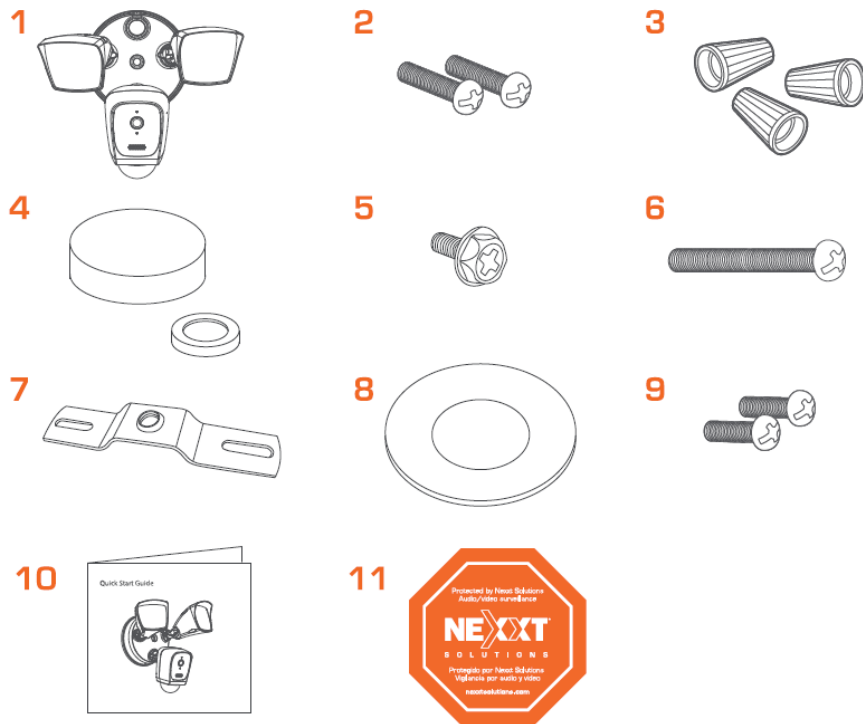
No.	LED status	Camera status
1	Red LED on	System is starting up
2	Red LED blinks	Standby mode for configuration
3	Blue LED blinks	The pairing of the camera with the network is under way
4	Blue LED on	The camera is paired and connected to the network

4. PIR motion sensor (for lights)
5. Light sensor: enables the night vision function for the camera
6. Front-facing built-in speaker and microphone: the speaker allows you to be heard from your phone via the Nexxt Home app. The microphone picks up the voice of anyone standing near the camera or sound in the surrounding area.
7. Built-In microSD- card slot: supports local storage for a card of up to 128G.
MicroUSB port: this is an external power port (SVDC, 1 A) for camera use only.
Note: the light will not turn on when powering the device through this microUSB port.
Also, make sure to keep this area sealed with the cover when not in use, to avoid water damage.
Reset button: press and hold this button for 5 seconds to reset the device. If you have modified any settings, they will return to factory default.
8. Flood light: effective long-range illumination of 1250 lumens per light.



Package content

1. Smart Wi-Fi camera
2. Plate screws
3. Wire nuts
4. Center screw silicon cap and washer
5. Ground screw
6. Center plate screw
7. Mounting plate
8. Waterproof gasket
9. Bracket screws
10. Quick start guide
11. Warning stickers



Initial inspection

Before installing the light fixture, ensure that all parts are present (see hardware included on previous page). If any part is missing or damaged, do not attempt to assemble, install, or operate this light fixture.

Estimated installation time: about 30 minutes.

Tools required but are not included for installation

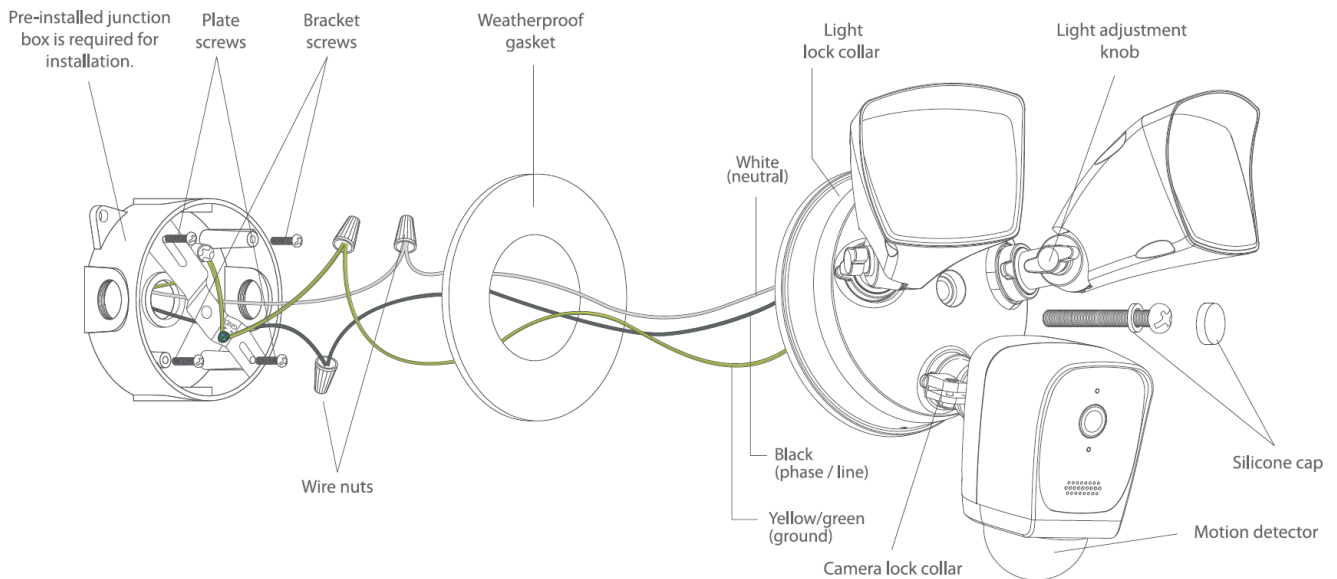
1. Phillips screwdriver
2. Flathead screwdriver
3. Pliers
4. Wire strippers/cutters
5. Circuit tester
6. Work gloves
7. Electrical tape
8. Safety goggles
9. Ladder



How it all fits together

IMPORTANT

Properly ground fixture



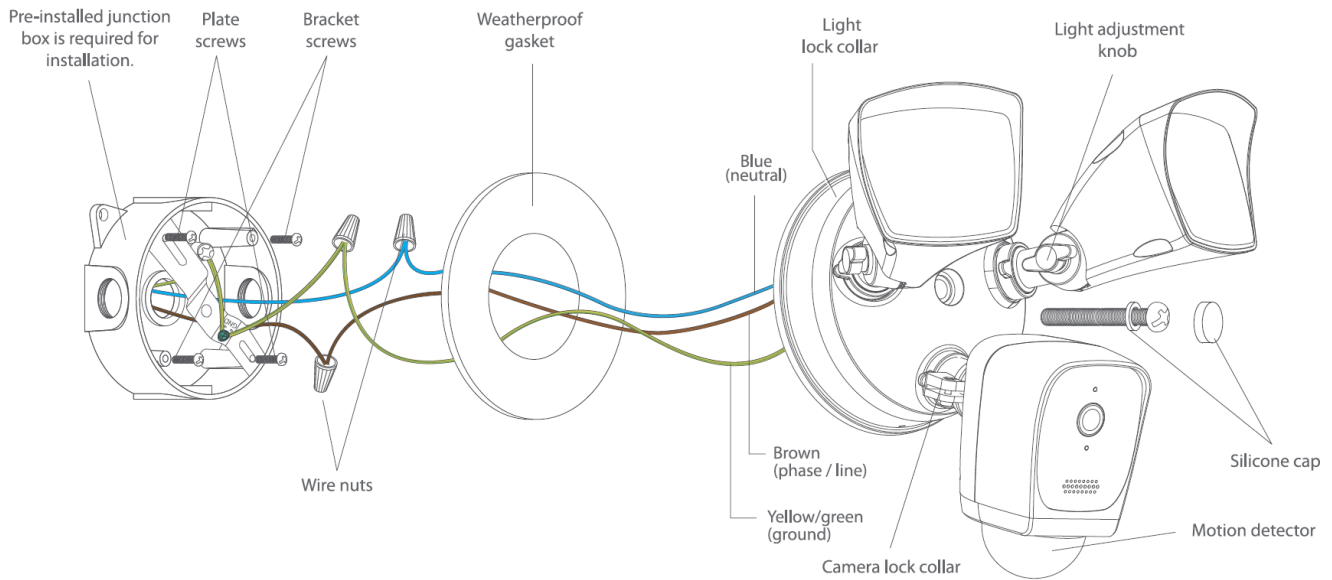
North American color code standard: black, white, yellow/green

How it all fits together

IMPORTANT

Properly ground fixture

Always follow code standards when installing wired connections.



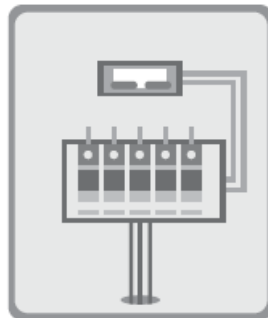
Europe/Australia color code standard: blue, brown, yellow/green

1. Shut power off at the breaker

And the breaker that controls the circuit for the junction box where the floodlight will be installed. Turn it off before you continue installation.

Place tape over the circuit breaker switch and verify power is off at the light.

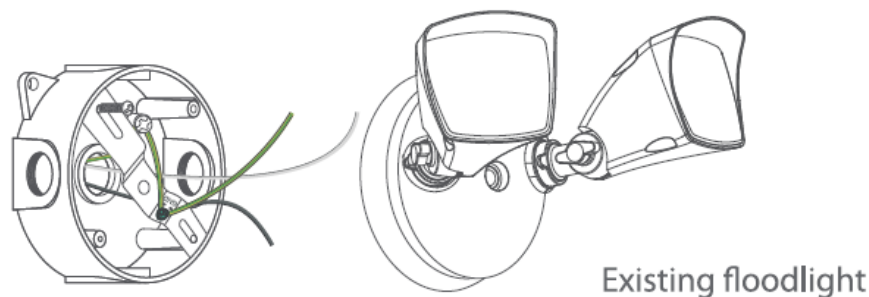
Note: you can use the circuit tester at this point to verify that power is cut off.



2. Determine the location

With the power off at the breaker, carefully remove any existing light fixture from the junction box.

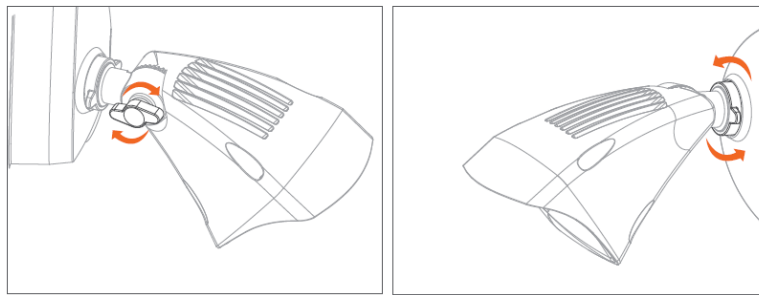
Make sure to label the wires (ground, line or phase and neutral) from existing fixture prior to removing.



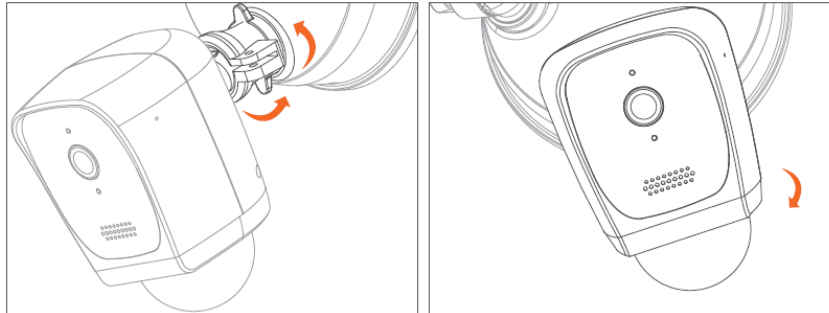
Note: If there wasn't a light fixture previously installed, then professional wiring installation will be required prior to proceeding to the next step. Seek technical help in this case.

3. Prepare your floodlight camera for installation

- Loosen the knobs on the light fixtures to rotate them out of the way and allow access to the mounting screws.



- Rotate the camera to adjust the viewing angle in the desired direction.



Federal Communications Commission (FCC) Statement

This device complies with part 15 of the FCC Rules. Operation is subject to the following two conditions: (1) This device may not cause harmful interference, and (2) this device must accept any interference received, including interference that may cause undesired operation.

Note: This equipment has been tested and found to comply with the limits for a Class B digital device, pursuant to part 15 of the FCC Rules. These limits are designed to provide reasonable protection against harmful interference in a residential installation. This equipment generates, uses and can radiate radio frequency energy and, if not installed and used in accordance with the instructions, may cause harmful interference to radio communications. However, there is no guarantee that interference will not occur in a particular installation. If this equipment does cause harmful interference to radio or television reception, which can be determined by turning the equipment off and on, the user is encouraged to try to correct the interference by one or more of the following measures:

- Reorient or relocate the receiving antenna.
- Increase the separation between the equipment and receiver.
- Connect the equipment into an outlet on a circuit different from that to which the receiver is connected.
- Consult the dealer or an experienced radio/TV technician for help.

Warning: Changes or modifications made to this device not expressly approved by Xian Chishine Optoelectronics Technology Co.,Ltd may void the FCC authorization to operate this device.

Note: The manufacturer is not responsible for any radio or TV interference caused by unauthorized modifications to this equipment. Such modifications could void the user's authority to operate the equipment.

Radiation Exposure Statement This equipment complies with FCC radiation exposure limits set forth for an uncontrolled environment. This equipment should be installed and operated with minimum distance 20cm between the radiator and your body.

This transmitter must not be co-located or operating in conjunction with any other antenna or transmitter.

Documents / Resources



[NEXXT SOLUTIONS HACF610 Smart Flood Light Wi-Fi Camera](#) [pdf] User Guide
HACF610, X4YHACF610, HACF610 Smart Flood Light Wi-Fi Camera, HACF610, Smart Flood Light Wi-Fi Camera

