



NEXTECH XC5910 11 in 1 Multifunction Hub With 2 HDMI DP Network SD Micro SD 100W PD Audio And Microphone Instruction Manual

[Home](#) » [Nextech](#) » NEXTECH XC5910 11 in 1 Multifunction Hub With 2 HDMI DP Network SD Micro SD 100W PD Audio And Microphone Instruction Manual 

Contents

1 NEXTECH XC5910 11-in-1 Multifunction Hub With 2 HDMI DP Network SD Micro SD 100W PD Audio And Microphone

2 INTRODUCTION

3 PRODUCT FEATURES

4 PRODUCT OVERVIEW

5 SYSTEM REQUIREMENTS

6 DISPLAY MODE SETTINGS

7 FAQ

8 Documents / Resources

9 Related Posts

NEXTECH

NEXTECH XC5910 11-in-1 Multifunction Hub With 2 HDMI DP Network SD Micro SD 100W PD Audio And Microphone



INTRODUCTION

Built in a slim, light, and miniature case, the MST (Multi-Stream Transport) dock is designed to meet the demands of extra USB peripherals and monitors. You can choose a DP or HDMI port for high-resolution display to extend or duplicate the content of your AV sources. In addition, you can also connect your laptop to the upstream USB-C port and get it charged. The dock also has three USB 3.0 interfaces, allowing you to transfer data at high speeds.

PRODUCT FEATURES

- **USB Power Delivery**

The upstream USB-C port is compliant with USB power delivery specification revision 3.0 and supports up to 100W power supply.

- **USB Data Transmission**

The MST dock has three USB 3.0 ports, providing your devices with plenty of connection possibilities with a data transfer rate of up to 5Gbps.

- **Triple Display**

This MST dock has 3 different video ports, you can either select one port or combine two or all three of them for your own needs.

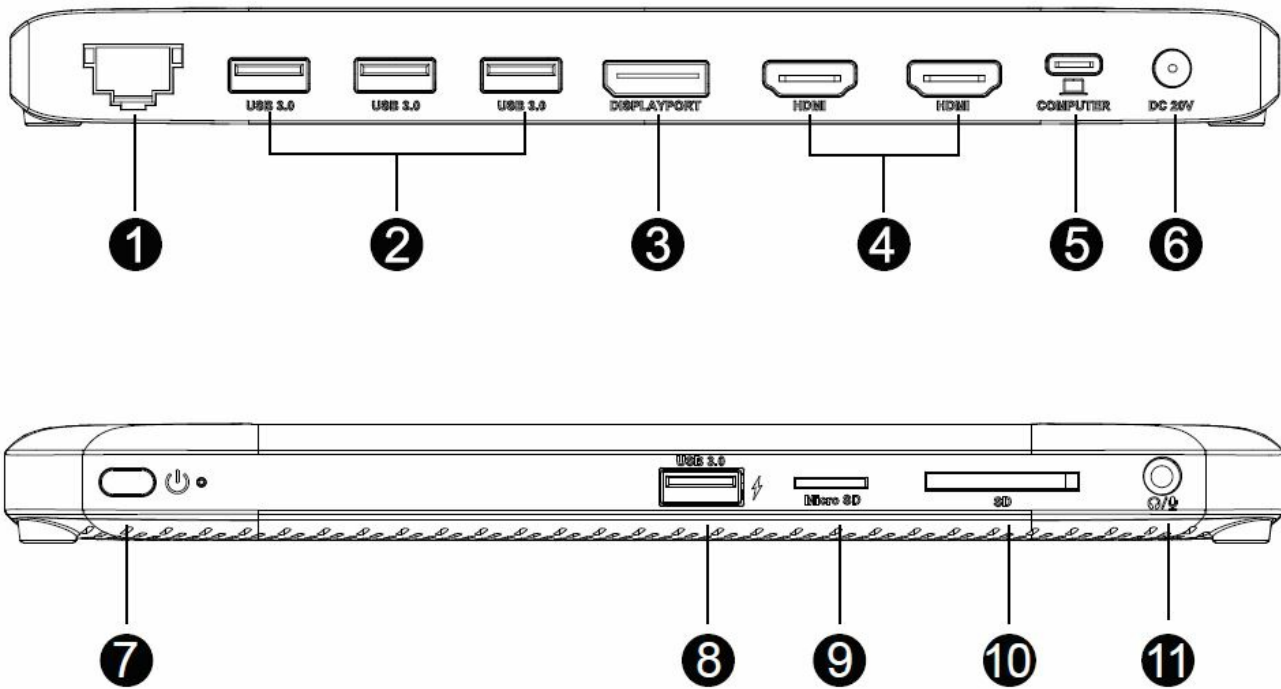
- **RJ45 Gigabit Ethernet**

A Gigabit Ethernet port provides high-speed networking and is backward compatible with 10/100/1000 Mbps.

- **SD/TF Card Reader**

Support Secure Digital™ v5.0 and SD v3.1 UHS-I. Support Card Reader SDHC/SDXC (Capacity up to 2TB).

PRODUCT OVERVIEW



1. Gigabit Ethernet port
2. 3 x USB 3.0 port
3. 1 x DisplayPort
4. 2 x HDMI port
5. Upstream USB-C port
6. Power port
7. Power button
8. USB 3.0 port with BC 1.2 fast charging
9. Micro SD card reader
10. SD card reader
11. 4-pole phone jack

SYSTEM REQUIREMENTS

- Windows 7/8/10 or later
- Mac OS X 10 or later
- CPU i7 or higher, RAM 4GB or above
- Host PC/laptop supporting PD 3.0
- PC/laptop with USB 3.1 full function Type-C port (Power Delivery, Video Alternate, Data Transfer)

SINGLE DISPLAY

Video Port		DP	HDMI	HDMI
DP version of PC/laptop	HBR2 (DP1.2)	3840 x 2160@30Hz	3840 x 2160@30Hz	3840 x 2160@30Hz
	HBR2 (DP1.4)	3840 x 2160@30Hz	3840 x 2160@60Hz	3840 x 2160@60Hz

DUAL DISPLAY

Video Port		Dual HDMI	DP + HDMI
DP version of PC/laptop	HBR2 (DP1.2)	1920 x 1080@60Hz	1920 x 1080@60Hz
	HBR2 (DP1.4)	2560 x 1440@60Hz	2560 x 1440@60Hz

TRIPLE DISPLAY

Video Port		DP + HDMI + HDMI		
DP version of PC/laptop	HBR2 (DP1.2)	1600 x 900@60Hz	1600 x 900@60Hz	1600 x 900@60Hz
	HBR2 (DP1.4)	1920 x 1080@60Hz	1920 x 1080@60Hz	1920 x 1080@60Hz

Note: If you want to use 3 displays with your PC/laptop simultaneously, please make sure that the Graphics card of the USB-C port supports at least 4 displays in DP ALT Mode, including your PC's own screen. Check with your PC's manufacturer on this. If your graphics card doesn't support 4 displays, please check FAQ Q2 for details.

Remarks for Windows-based PCs/laptops

1. Before you connect two or three monitors, we suggest you lower monitor resolution, please check FAQ Q3 for details.
2. Before you connect three monitors, we suggest you disconnect the laptop/PC first, please check FAQ Q2 for details.

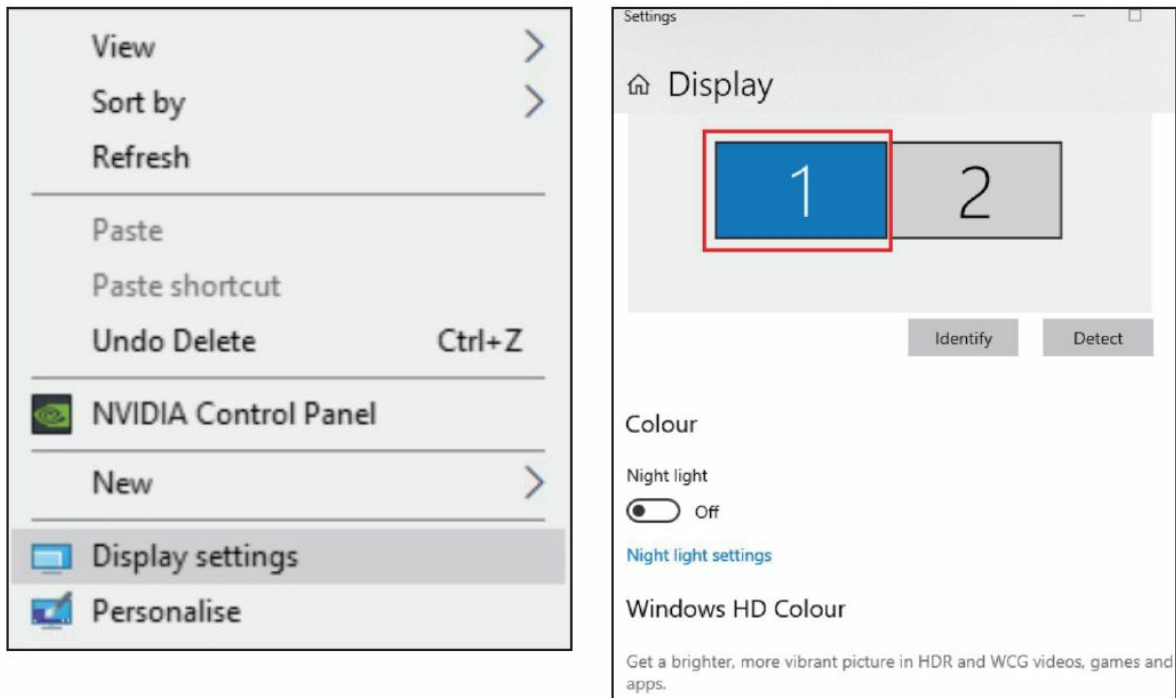
Remarks for Mac-based PCs/laptops

1. When you connect only one external monitor to the dock, there are both extend and mirror modes available.
2. If you have two or three monitors connected to the dock, then you can only extend to one monitor while the other one or two monitor(s) will copy the same content on your extended monitor.

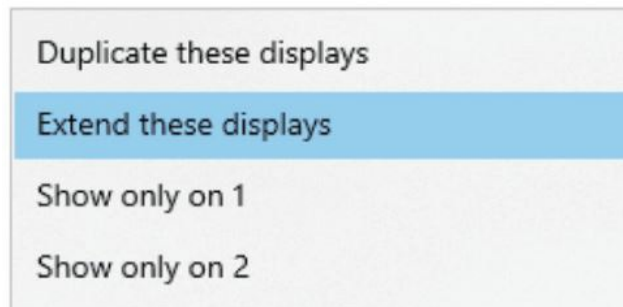
DISPLAY MODE SETTINGS

For Windows Users

1. Right-click at any spot on your desktop and select “Display settings”.



2. On “Display”, please select either monitor 1 or monitor 2.
3. Scroll down to “Multiple displays”, and select the mode in the drop-down list that is best for your needs.



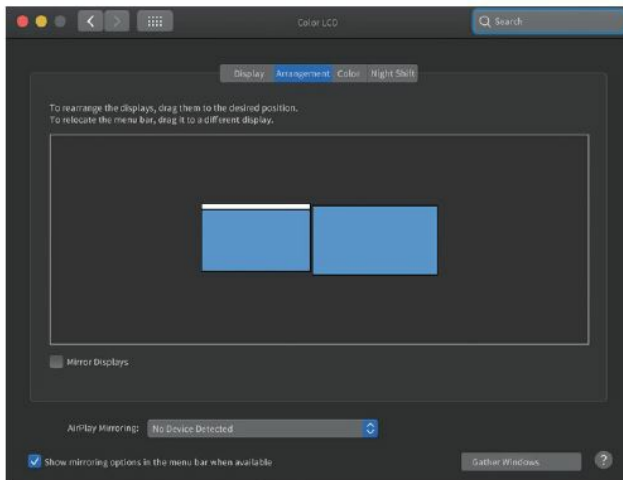
For Macintosh Users

1. Select “System Preferences” and then choose “Displays”.

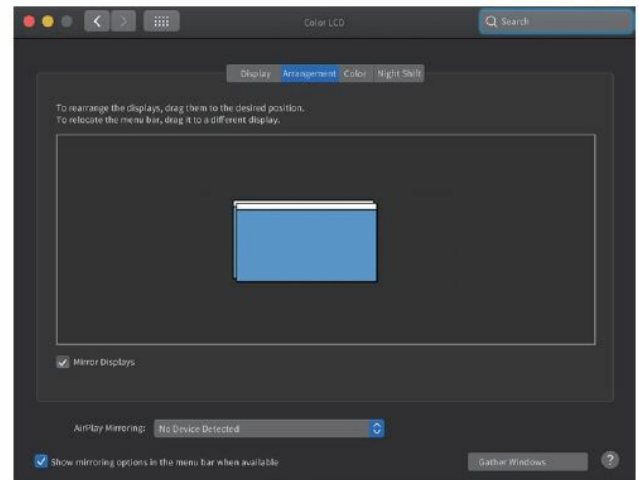


2. Click on “Arrangement” to change the position of displays currently connected.

3. Choose the expand or mirror mode according to your preferences.



Extend Mode

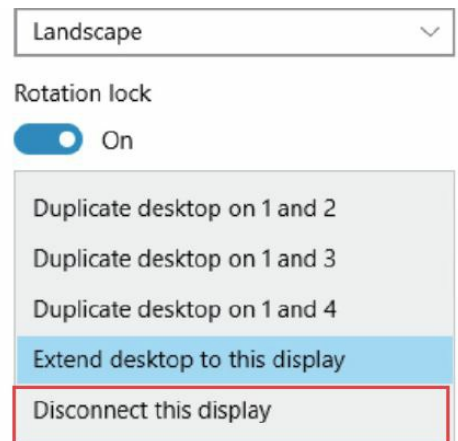
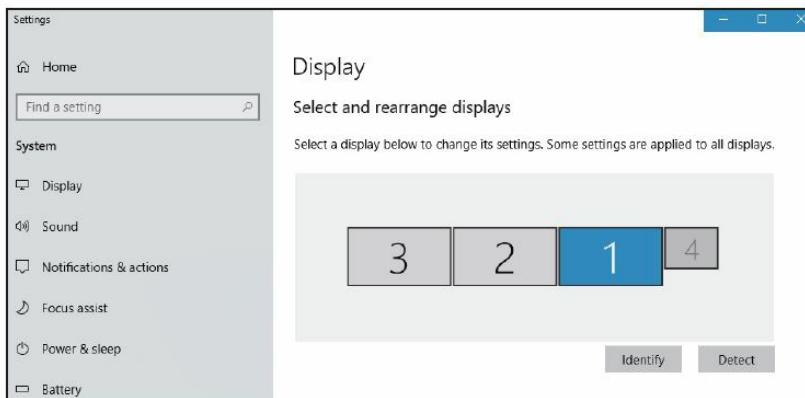


Mirror Mode

FAQ

How to figure out the maximum resolution (DP1.2/DP1.4) my laptop supports?

1. Firstly check the Graphics card version of your laptop;



2. Find "display adapter" in "Device Manager".



3. Check your Graphics card's information with the manufacturer.

Display

Landscape

Rotation lock

☒ On

Duplicate desktop on 1 and 2

Duplicate desktop on 1 and 3

Duplicate desktop on 1 and 4

Extend desktop to this display

Disconnect this display

Why doesn't my third monitor display when I set the triple display mode?

Choose the main display

1. Right-click to select "Display settings".
2. Disconnect laptop display

Display

Select and rearrange displays

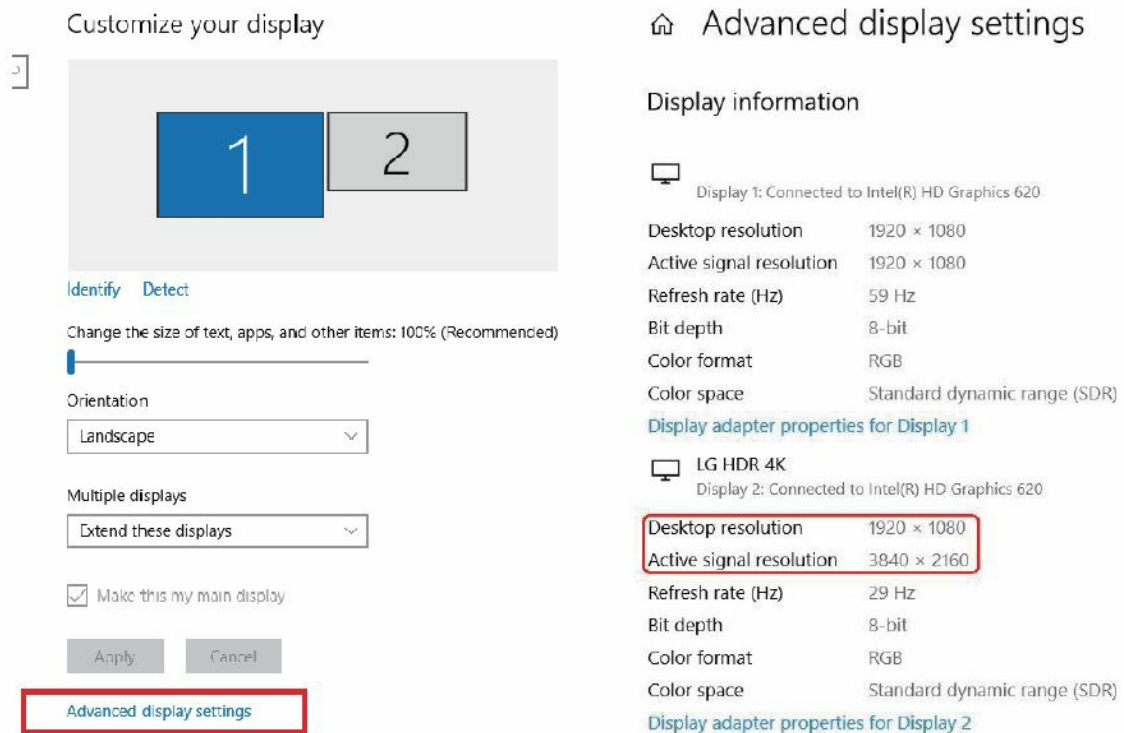
Select a display below to change its settings. Some settings are applied to all displays.



Identify

Detect

3. Choose a monitor display and scroll down to "Multiple displays".
4. Mark "Make this my main display".

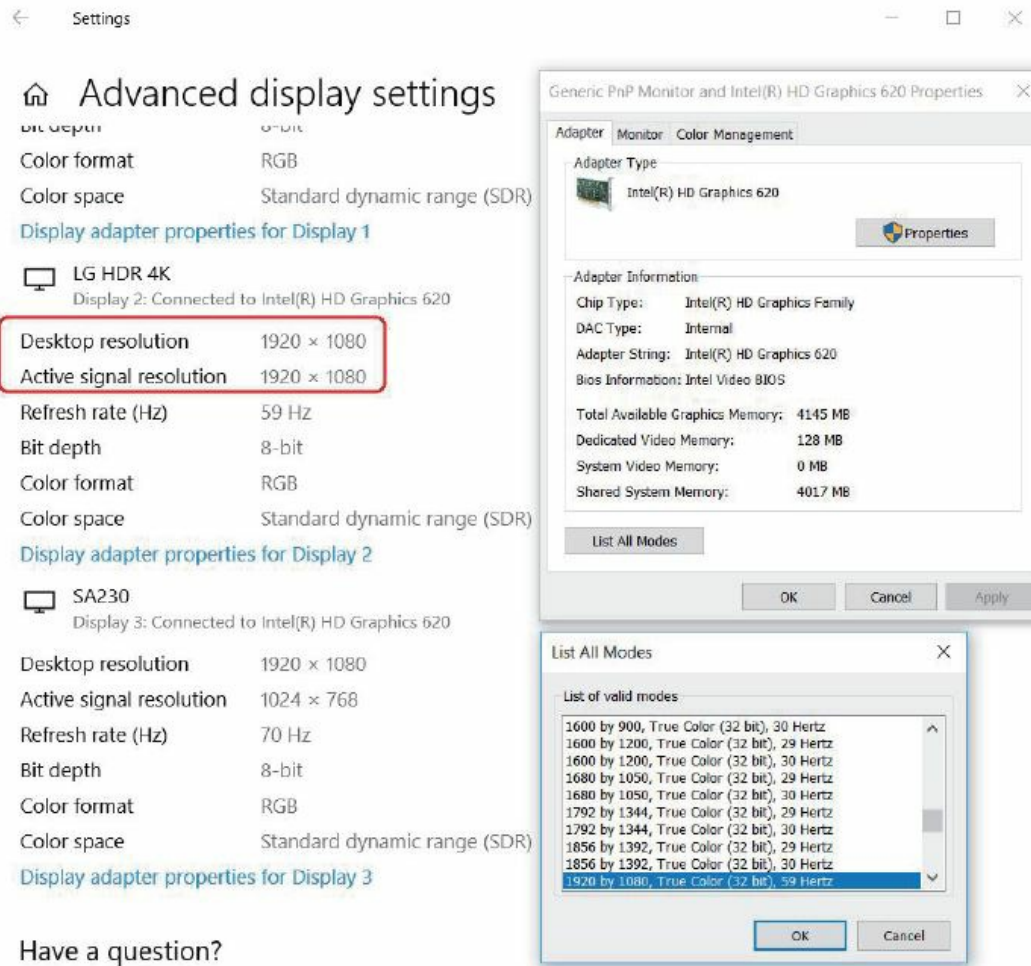


5. Select the laptop display ("1" is the default display for the laptop) and scroll down to "Multiple displays".
6. Select "Disconnect this display", then the laptop display panel will become disconnected.
7. Turn on the third monitor display. Choose the remaining monitor display, then scroll down to "Multiple displays".
8. Select "Extend desktop to this display" to enable this display.

Why do the displays on my 2K and 4K monitors appear unusual in dual or triple display mode?

The resolution of some branded monitors cannot be adjusted automatically, the "Active signal resolution" for example is different from Windows setting "Desktop resolution", hence you'd better set the resolution at the same value. Check your Graphics card's information with the manufacturer.

1. Right-click and select "Display settings".
2. Select your monitor display and click on it, then scroll down to select "Advanced display settings".



3. Check if the resolution values of each monitor on “Desktop resolution” and “Active signal resolution” are the same.
4. Click on “Display adapter properties for Display 2” and lower the resolution to the right value if the two values are different.

Why does it show “slow charging” on my laptop?

Some users may notice that the charging status shows “slow charging”, this is because some series of laptops have protection protocol, especially laptops that have both Thunderbolt 3 port and over 130W external DC power adapter. Please use the original laptop charger to charge.

What is High Dynamic Range (HDR)?

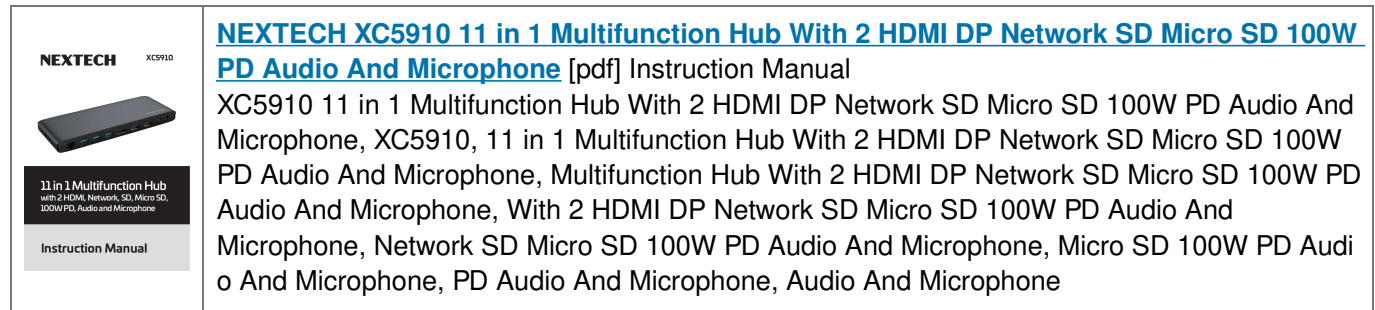
High Dynamic Range (HDR) creates much more lifelike experiences by allowing bright objects such as lights and highlights glinting off shiny objects to be displayed much more brightly than other objects in the scene. HDR also allows for more details in dark scenes. True HDR playback is not yet available on the built-in displays of laptops and tablets, many of TVs and PC monitors start to build in HDR-10 with HDCP2.2 to support. Some of the key HDR content sources today are:

- Streaming HDR (e.g. YouTube*) & Streaming premium HDR (e.g. Netflix*)
- Local HDR Video Files
- ULTRA HD Blu-ray*
- HDR games
- HDR content creation apps Also, if you need to stream HDR content with applications like Netflix and YouTube, make sure in Windows 10 the “Stream HDR Video” setting is “on” on the “Video playback settings” page.

Distributed by:

Electus Distribution Pty Ltd
46 Eastern Creek Dr,
Eastern Creek NSW 2766 Australia Ph 1300 738 555
Int'l +61 2 8832 3200
Fax 1300 738 500
www.electusdistribution.com.au

Documents / Resources



Manuals+,