



## **NEXTECH Outdoor WiFi PTZ Camera QC3859 User Manual**

Home » [Nextech](#) » NEXTECH Outdoor WiFi PTZ Camera QC3859 User Manual 

**NEXTECH Outdoor WiFi PTZ Camera QC3859 User Manual**



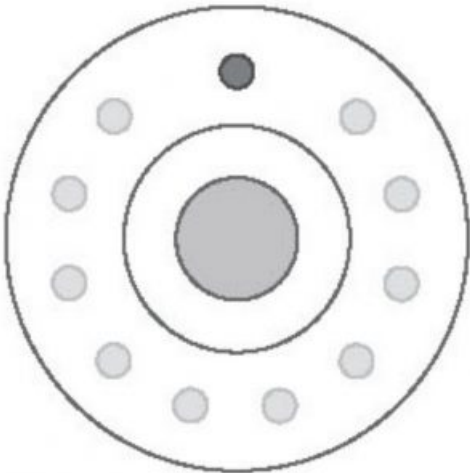
## Contents [ [hide](#) ]

- 1 [Product Introduction](#)
- 2 [Install APP](#)
- 3 [Add The Device-Scan QR code mode](#)
- 4 [Add The Device-AP Mode](#)
- 5 [Customer Support](#)
- 6 [File Downloads](#)
- 7 [Related Manuals](#)

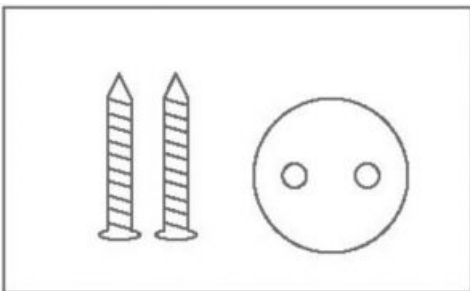
## Product Introduction

Packing list: Smart Camera x 1, Manual x 1, USB Power Cord x 1, Power Adapter x 1 ,Screw Accessories Package x 1

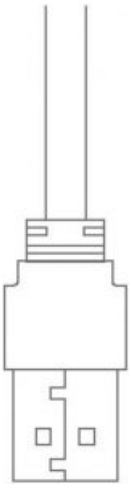
- Smart Camera



- Screw Accessories Package



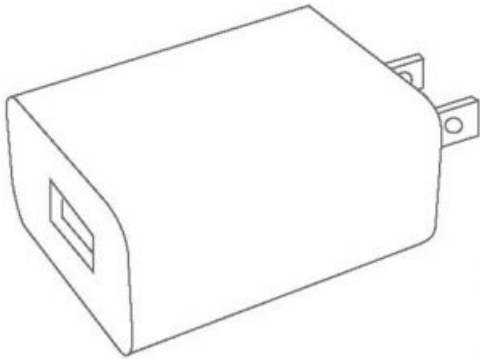
- USB Power Cord



- Manual



- Power Adapter



## Basic Parameters

- **Product Name:** Smart Camera
- **Pixel:** 1.0Mp/2.0MP
- **Video Compression:** H.264 High Profile
- **Image Enhancement:** Digital Wide Dynamic 3D Noise Reduction
- **Local Storage:** MicroTF card
- **Wireless Encryption:** WEP/WPA/WPA2 Encryption
- **Power Input:** 5V 1A(Min)
- **Total Power Consumption:** 5W (Max)
- **WirelessStandard:** 2.4G 802.11 b/g/n
- **Support Platform:** Android/iOS

### Component Description:

Reset Button: Long press “reset” hold 5 seconds.

It is recommended to use 8-64GB high-speed Micro SD card, otherwise it will be difficult for the camera to store and view past video recordings. support Important

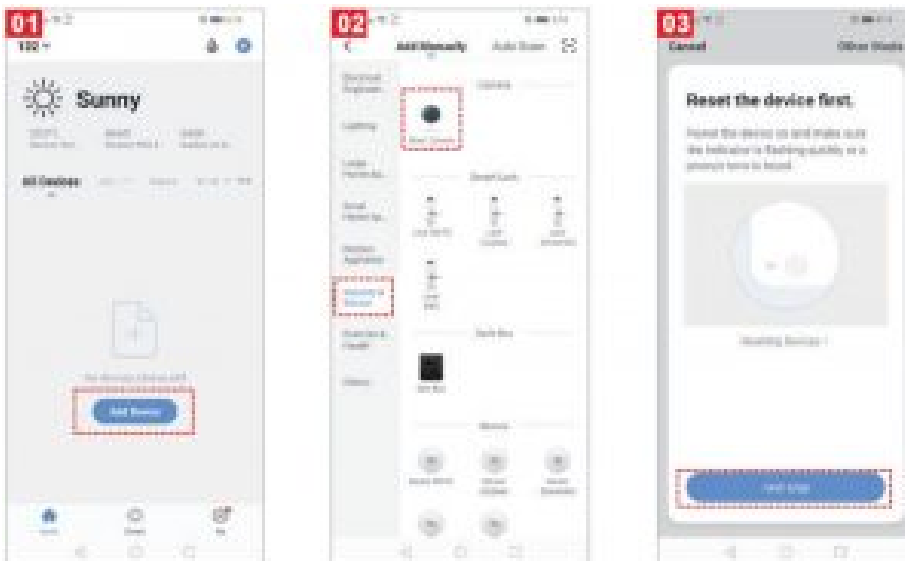
### Install APP

Download APP: scan the QR code below to download and install. Register and login: open the ” Smart Life” APP to register and login according to the prompts.

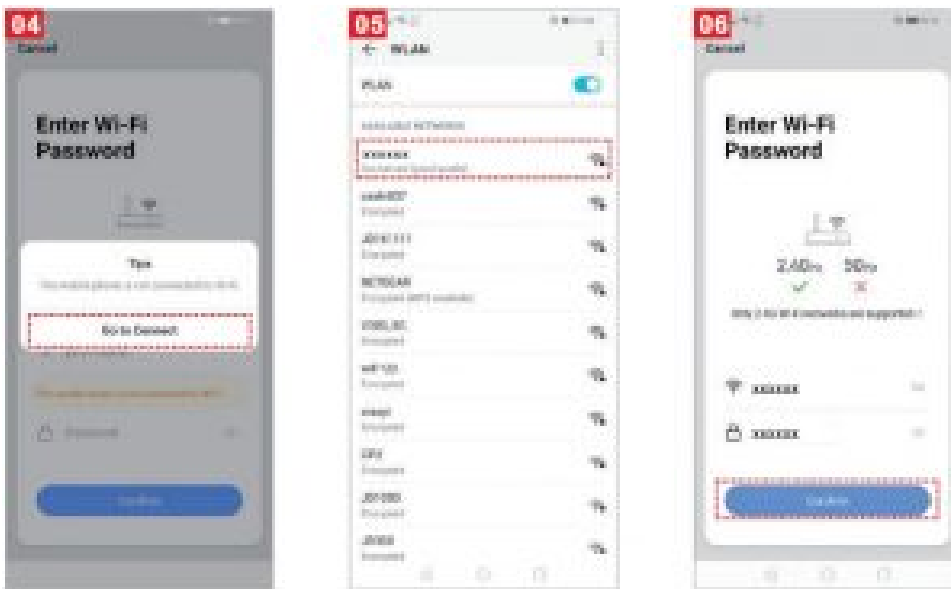


### Add The Device-Scan QR code mode

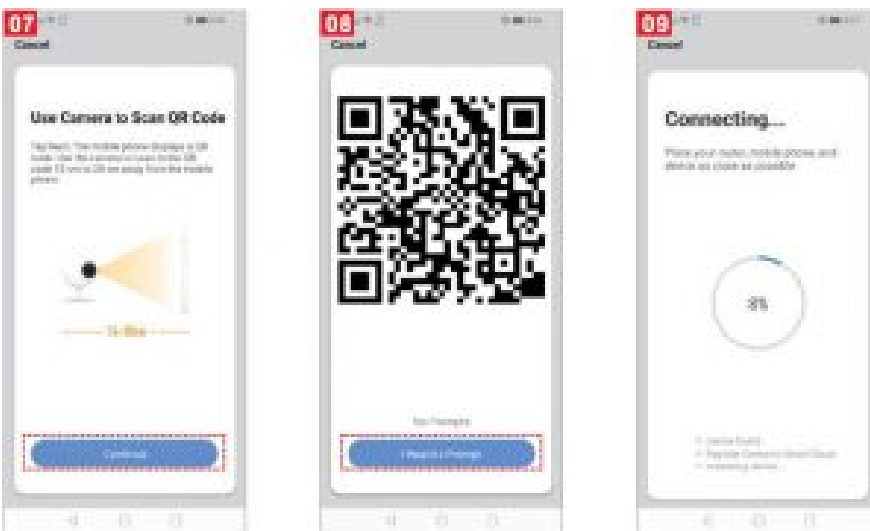
- Make sure Wi-Fi is available and connected to the Internet.
- Connect the camera to the power, then system startup completed.
- Open “Smart Life” APP, press the ‘+’ in the upper right corner of the main screen (**Figure 01**); choose “Security & Sensor”, click “Smart Camera” (Figure 02) to add camera; and then click “Next step” (**Figure 03**);



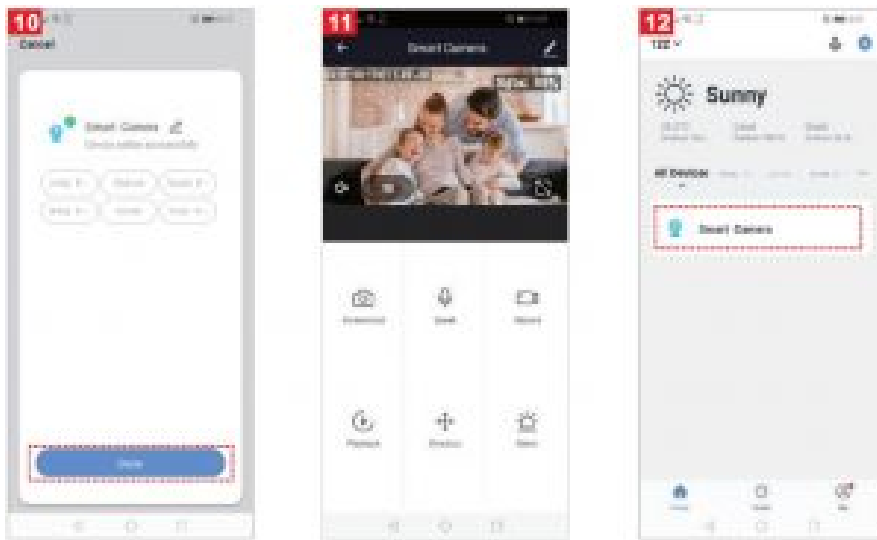
- If the mobile phone is not connected to wi-fi, please click “Connect to Wi-fi” (**Figure 04**);
- It will jump to the WLAN interface and connects Wi-Fi (Figure 05).Please note that only 2.4 GH Wi-Fi network is supported;
- If the phone is connected to Wi-Fi (Figure 06);



- click “Confirm”. It will jump to the interface to prompt to scan the QR code with camera and click “Continue” **(Figure. 07)**;
- A QR code will prompt on your screen and you need to scan it with the Smart Camera. (the camera is about 20-30 cm away from the mobile phone lens). Then click “hear the prompt sound” **(Figure. 08)**.
- “connecting” **(Figure. 09)**;



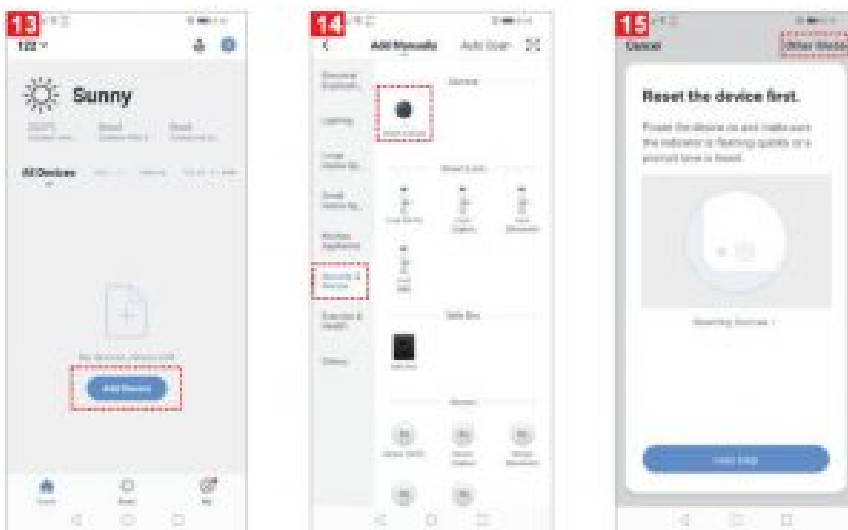
- When the progress reaches 100%,connection completed**(Figure 13)**, and click “Finish”;
- Then jump to preview interface **(Figure 11)**
- After closing the device preview interface, the interface returns to the APP home page. At this time, the connected device will appear on the APP home page **(Figure 14)**. Then you can click directly to the device interface to see the monitoring situation without re-adding afterwards.



## Add The Device-AP Mode

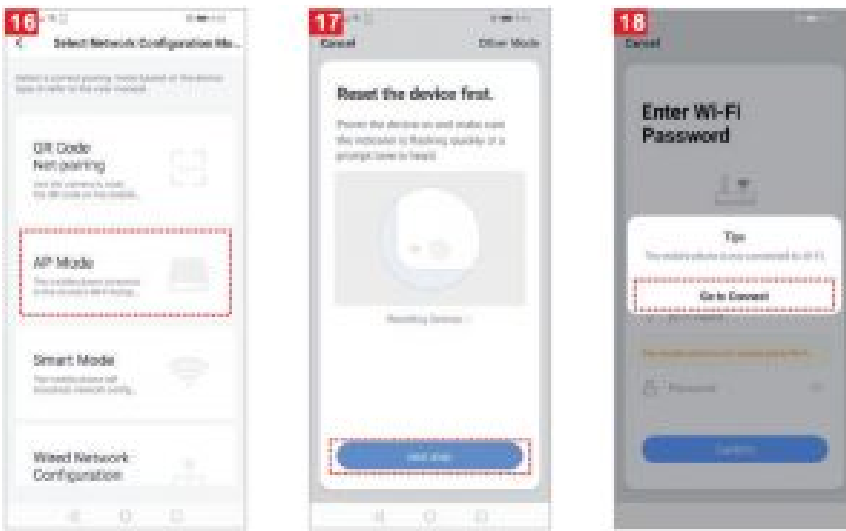
If you want to use AP Mode,press the reset button on the machine

- Make sure Wi-Fi is available and connected to the Internet.
- Connect the camera to the power, system startup completed.
- Open “Smart Life” APP, press the ‘+’ in the upper right corner of the main screen (**Figure 13**); choose “Security & Sensor”, click “Smart Camera” (**Figure 14**) to add camera ; Alternatively, choose “other ways” to add (as shown in **Figure 15**);

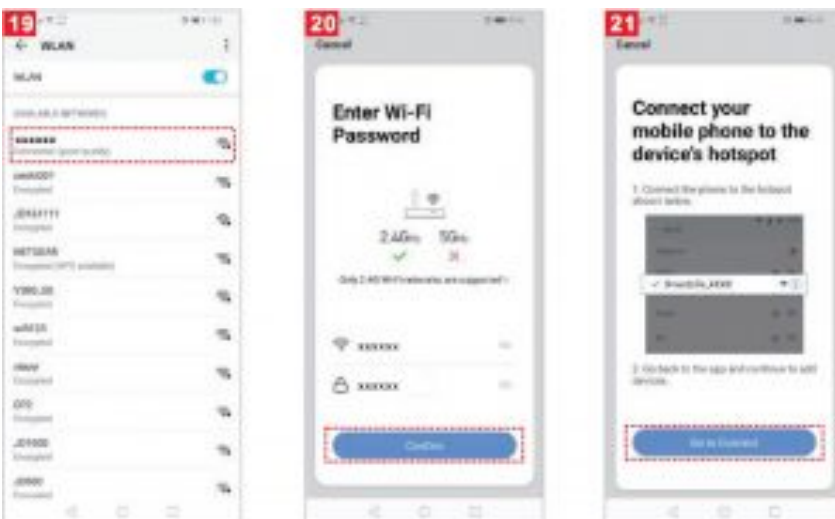


**Note** : Before using the “AP Mode”,you need to switch to “AP Mode” by lightly pressing the “Reset key” of the device.

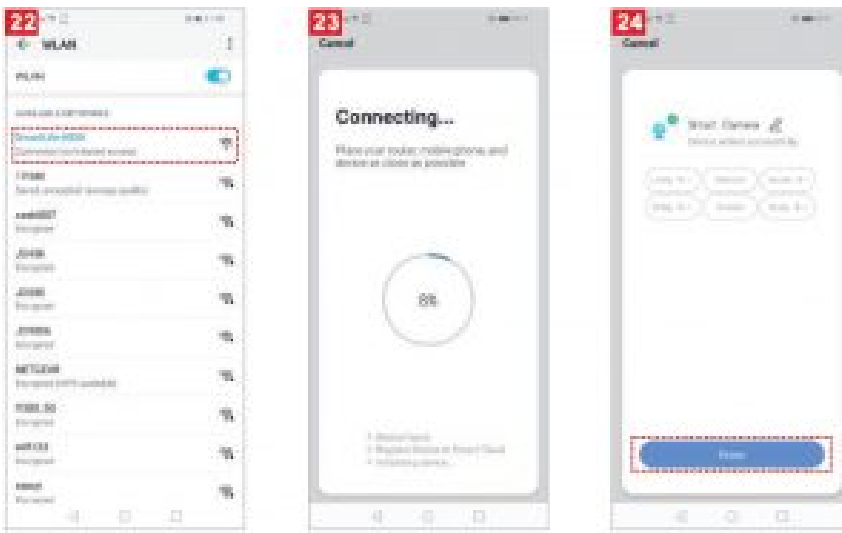
- Then click “hot spot configuration” (**Figure 16**);
- Then click” compatibility mode”, clicks”Next” (**Figure 17**);
- Then click “change Network” (**Figure 18**);



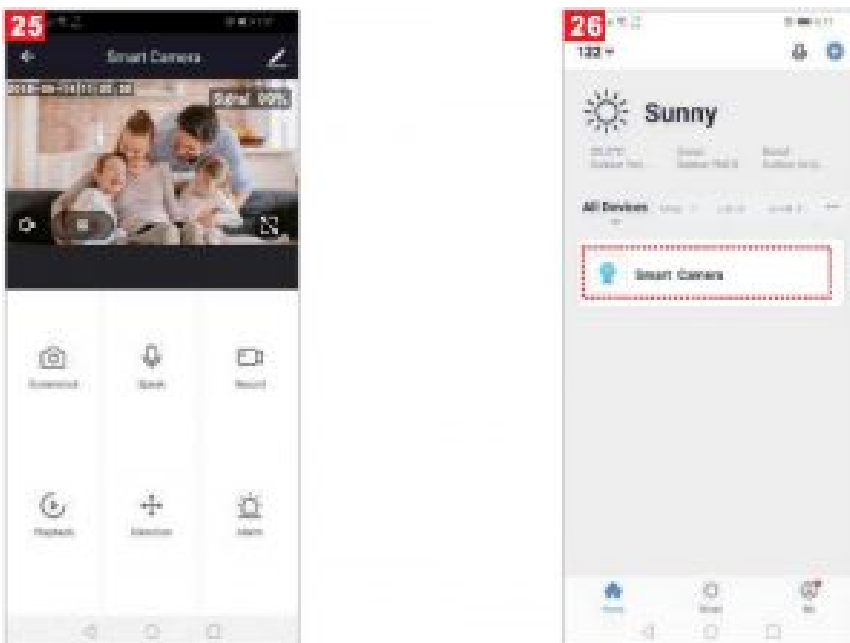
- Then enter the password to complete the connection **(Figure 19)**;
- Click Back and return to the APP compatible mode interface, where the Wi-Fi name and the connected Wi-Fi name are displayed Password, click the “Confirm” button **(Figure 20)**;
- The page jumps to where the interface prompts “Wi-fi” to connect to the device hotspot and clicks “Connect” **(Figure 21)**



- The interface jumps to the WALN connection interface, finds the Wi-Fi at the beginning of “Smart Lifi”, and clicks on the connection **(Figure 22)**;
- When the connection is completed, click back and return to the APP interface, at which time the APP display device is connected **(Figure 23)**.
- At this time, the device has been successfully connected; the interface jumps to “Add Device Successful” **(Figure 24)**;



- Then click “connected”, it will jump to the Preview Interface of the Device **(Figure 25)**
- Close the device preview interface and the interface returns to the APP home page, at which point the connected device will appear on the APP home page. **(Fig. 26)**, After entering the device interface to view, no need to re-add, click directly into the device interface to view .



## Customer Support

Distributed by: Electus Distribution  
 Pty. Ltd. 320 Victoria Rd, Rydalmere NSW 2116 Australia


[www.electusdistribution.com.au](http://www.electusdistribution.com.au)

Made in China

# NEXTECH

File Downloads



|   |   |  |
|---|---|--|
|  <p>NEXTECH<br/>Outdoor Wireless<br/>Wi-Fi PTZ Camera<br/>QC3859<br/>User Manual</p> | <p>NEXTECH User Manual<br/>NEXTECH, Outdoor WiFi PTZ Camera, QC3859</p> | <p><a href="#">Download</a> [optimized]<br/><a href="#">Download</a></p> |
|---|---|--|

## Related Manuals

1. [NEXTECH WiFi IP Camera with Alarm User Manual](#) Wi-Fi IP Camera With Alarm QC3870 User Manual Before using...
2. [NEXTECH 2K GPS Dash Camera Rear Camera User Manual](#) 2K GPS Dash Camera with Rear Camera QV3849 User Manual...
3. [HIKVISION Outdoor Network PTZ Speed Dome Camera User Manual](#) HIKVISION Outdoor Network PTZ Speed Dome Camera Features 1/2.8" Progressive...
4. [PTZ WiFi IP Camera User Manual](#) PTZ WiFi IP Camera User Manual Product List: After you...
5. [NEXTECH 1080p Dash Camera User Manual](#) 1080p Dash Camera User Manual QV-3845 Box Contents: ...
6. [NEXTECH 720p Security Camera Floodlights User Manual](#) NEXTECH 720p Security Camera Floodlights User Manual Product diagram Packing...