

## NextCentury RR4 Remote Reader User Guide

[Home](#) » [NextCentury](#) » NextCentury RR4 Remote Reader User Guide 

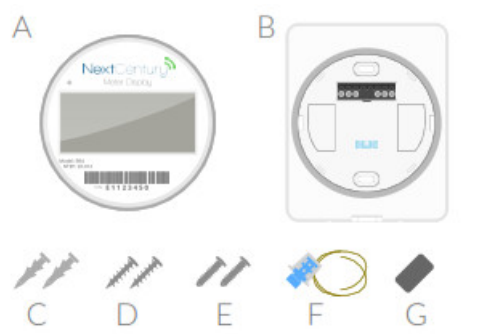


### RR4

#### Quick Start Guide

Welcome to your new Remote Reader. The RR4 is an advanced meter readisolu-on that provides a high visibility remote display of one or two u-limiters. Seng up and installed on the RR4 Remote Reader is quick and easy. A that includes built-in wireless AMR support is also available (RR4-TR).

#### Packaging Contents



- A) RR4 Remote Reader
- B) Mounting Plate
- C) Sheetrock Anchors
- D) Wall Mount Screws #6-20
- E) Box Mount Screws #6-32
- F) Wire Security Assembly
- G) AC-VA-on Magnet (one per case)

#### Important



During install-on, you will disconnect the Remote Reader from the Mounting Plate. It is not necessary to open the Remote Reader. The Remote Reader is a sealed, water-tight design, and should only be opened to replace the battery (10-year approximate battery life).

## Additional Resources



<http://products.nextcenturymeters.com/rr4>

For a full install-on guide, spec sheets, and add-on resources, please visit:

[products.nextcenturymeters.com/rr4](http://products.nextcenturymeters.com/rr4)

### Contact Information

Phone: 844.538.8203

Email: [support@nextcenturymeters.com](mailto:support@nextcenturymeters.com)

### Contents

- [1 Installation](#)
- [2 Wiring Guide](#)
- [3 Direct Connect](#)
- [4 Programming](#)
- [5 Documents / Resources](#)
- [6 Related Posts](#)

## Installation

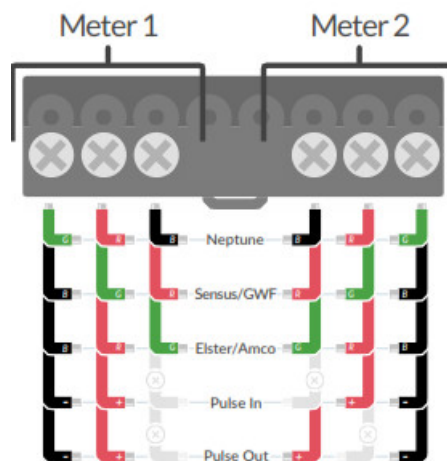


1. Pull Down Security Tab to Remove Remote Reader from Mounting Plate
2. Secure the Mounting Plate and Connect Meter(s)
3. Connect Remote Reader to Mounting Plate Then Lock Security Tab

## Installation Steps

1. Disconnect the Remote Reader from the Moun.ng Plate. Remember to first pull down on the Moun.ng Plate Security Tab.
2. Install the Moun.ng Plate using the anchors and #6-20 screws, or use the #6-32 screws to install on a single gang wall box.
3. Connect the wire output from one or two meters to the Remote Reader Moun.ng Plate (wiring instructions on the other side of this guide).
4. The Remote Reader ships with a default configuration to read a single pulse-type meter. To program the Remote Reader for other configurations use the NCSS Mobile App's Direct Connect tool.
5. Test the meter connection:
  - For pulse meters, ensure the pulse count increments when a pulse is sent from the connected meter.
  - For encoder meters, ensure the proper read is displayed. It may be necessary to tap the display or swipe a magnet to get the latest encoder meter read.

## Wiring Guide



### Possible Configurations

- 1x Pulse Meter – Default (Meter 1 Port)
- 1x Encoder Meter (Meter 1 Port)
- 2x Pulse Meters (Meter 1 & 2 Ports)
- 2x Encoder Meters (Meter 1 & 2 Ports)
- 1x Encoder & 1x Pulse (Meter 1 & 2 Ports)
- 1x Pulse & 1x Encoder (Meter 1 & 2 Ports)
- 1x Pulse with Pulse Out (Meter 1 & 2 Ports)

## Wiring Guide

An interactive Wiring Guide is also available through the NextCentury Mobile App (Android and iOS Support).

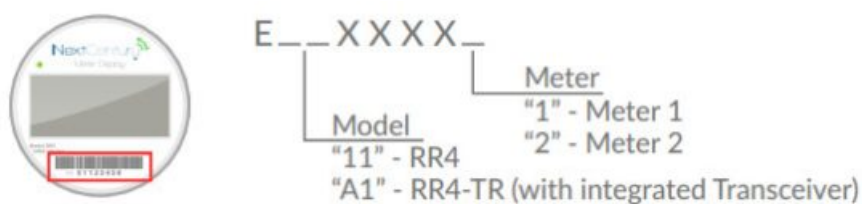
### Dual Meter+™ Technology

Meter+™ Technology has been developed to allow a single device to connect to virtually all modern meter outputs. These include a variety of different pulse-out meters as well as encoded output meters. Meter+™ Technology supports Neptune, Sensus, GWF, and Elster/AMCO 3-wire protocols. Simply wire the meter and program the Remote Reader with the applicable configuration. The Remote Reader includes two Meter+™ Technology ports, allowing for a large variety of different configurations.

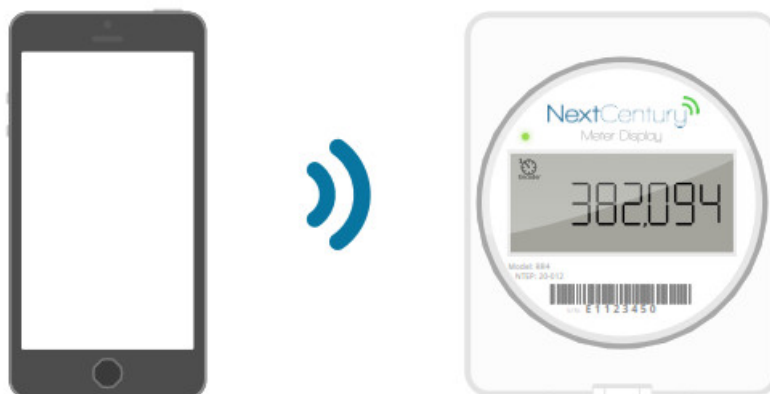
### Serial Number

The Serial Number is located on the face of the Remote Reader. This identification number always ends with a

“0.” When communicating with the NextCentury Web Platform through a Cellular Gateway, each meter is assigned a unique Transceiver Serial Number. The Serial Number for Meter 1 will end with a “1” and the serial number for Meter 2 will end with a “2.”



## Direct Connect



**Note:** the DC301 wireless programmer is not required for configuring this model.

## Programming

Configuring and testing the Remote Reader is completed using the NCSS Mobile App. The Mobile App's Direct Connect tool facilitates communication with your Remote Reader. The Mobile App allows simple in-field programming and configuration and does not require an active Internet connection.

## Mobile App Download



<http://products.nextcenturymeters.com/mobile?platform=ios&device=rr301>



<http://products.nextcenturymeters.com/mobile?platform=android&device=rr301>

## Additional Products

– RR4-TR: Remote Reader with an Integrated NextCentury Transceiver

- For more, visit: [www.nextcenturymeters.com](http://www.nextcenturymeters.com) or contact [sales@nextcenturymeters.com](mailto:sales@nextcenturymeters.com)

[illegible]

Manuals+,