



NextCentury RE4 Powerful Wireless Device User Guide

[Home](#) » [NextCentury](#) » NextCentury RE4 Powerful Wireless Device User Guide 

Contents

- [1 NextCentury RE4 Powerful Wireless Device](#)
- [2 Package Contents](#)
- [3 Installation](#)
- [4 Cloud Connected](#)
- [5 Verification](#)
- [6 Documents / Resources](#)
 - [6.1 References](#)
- [7 Related Posts](#)



NextCentury RE4 Powerful Wireless Device



Meet the next generation NextCentury Repeater! The RE4 is a powerful wireless device that extends network coverage on a property. With simple plug-n-play setup and the longest radio range in its class, the RE4 Repeater makes installation quick and easy.

Package Contents



- A) RE4
- B) Mounting Plate
- C) Power Supply
- D) Mounting Hardware

NextCentury Connect™ Technology

NextCentury Connect™ wireless technology has been developed to ensure excellent signal integrity in even the most challenging RF environments. Long-distance 900MHz radios and smart frequency hopping help mitigate interference and overcome line-of-sight obstacles.

The NextCentury Connect™ technology includes a bi-directional encryption engine for security and data privacy. Intelligent network balancing allows for efficient and reliable communication of meter end points.

Additional Resources

For full installation guide, spec sheets, and additional resources, please visit:
<http://products.nextcenturymeters.com/re4>

Contact Information

Phone: 844.538.8203 opt. 2

Email: support@nextcenturymeters.com

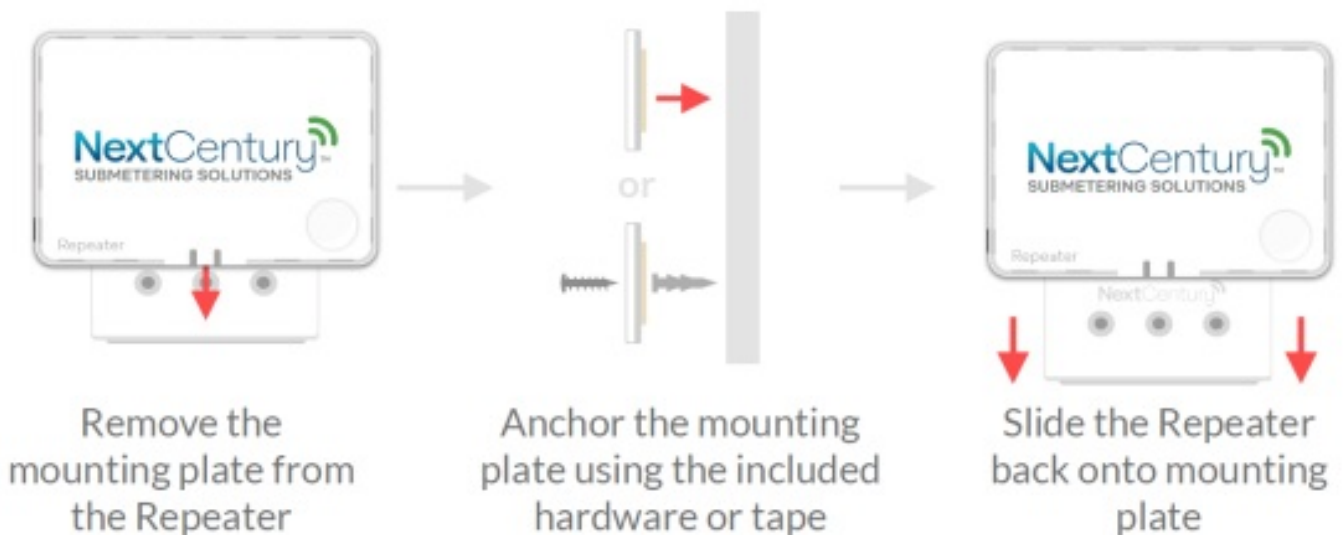
Installation

Where to Install

Repeaters extend the wireless coverage for Transceivers and other Repeaters and facilitate two-way communication with the Gateway. Where possible, select installation locations:

- Away from immediate obstructions (i.e. appliances and metal doors)
- Not directly mounted on metal supports, beams, or decking
- Mounted as high as possible within the location

Mounting On Wall



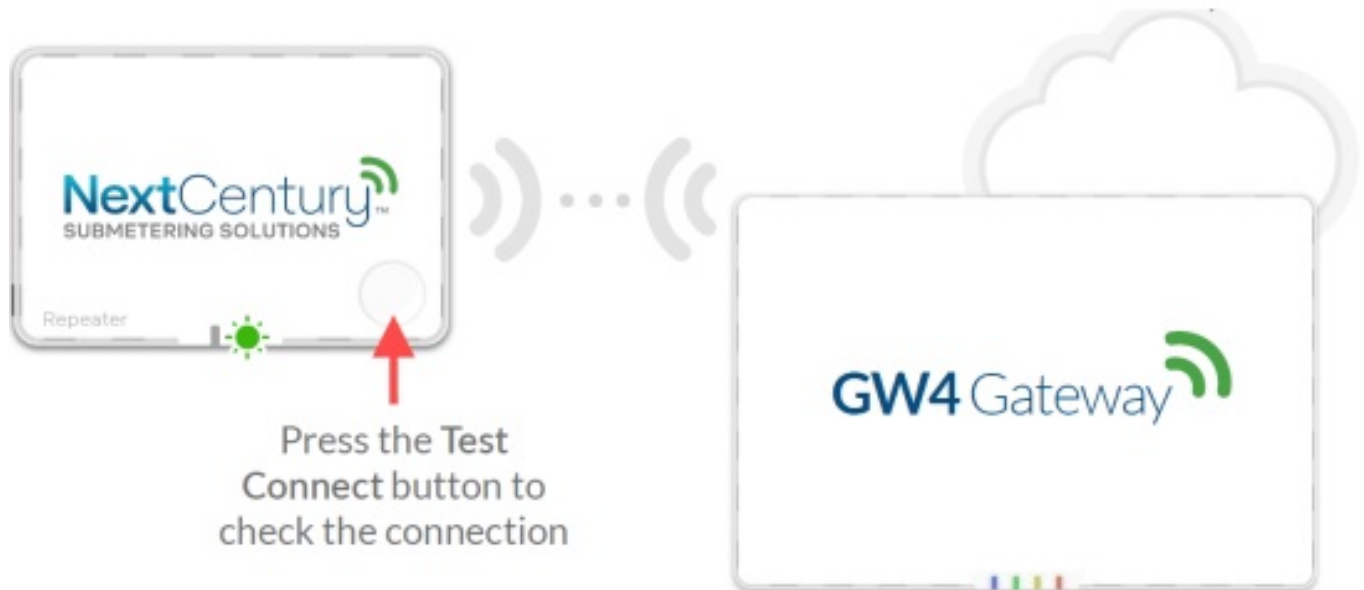
Power the Repeater using the included power supply

Note: Mount the RE4 at least 3' from GFCI outlets

Cloud Connected

Wireless Made Easy

When installing NextCentury Repeaters, you can instantly know if everything is working correctly by tapping the Test Connect button. The Repeater's RF LED will blink green when it is able to communicate with its Gateway.

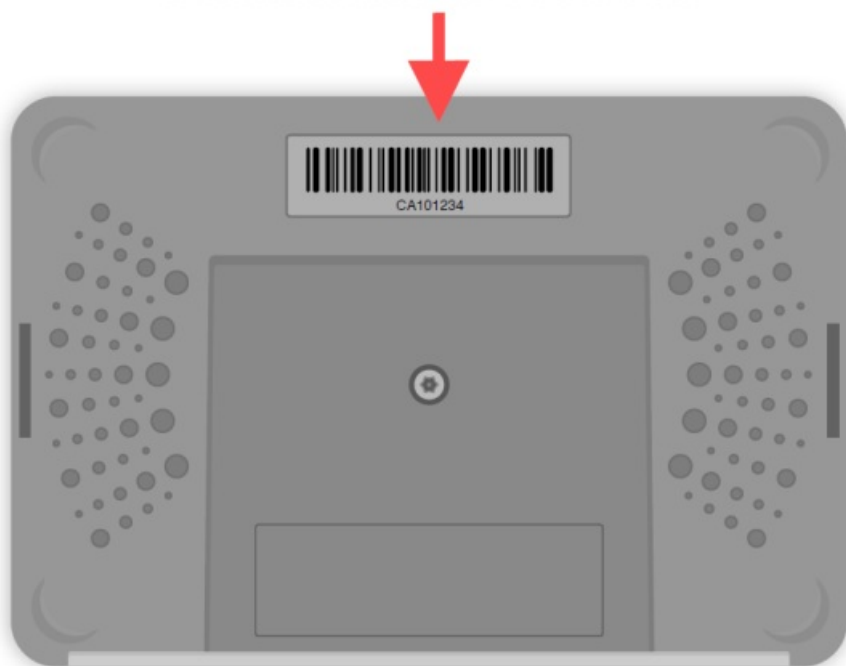


Easy Programming

To confirm the connection using the Test Connect button, make sure equipment is first programmed and the Gateway is connected to the NextCentury Cloud.

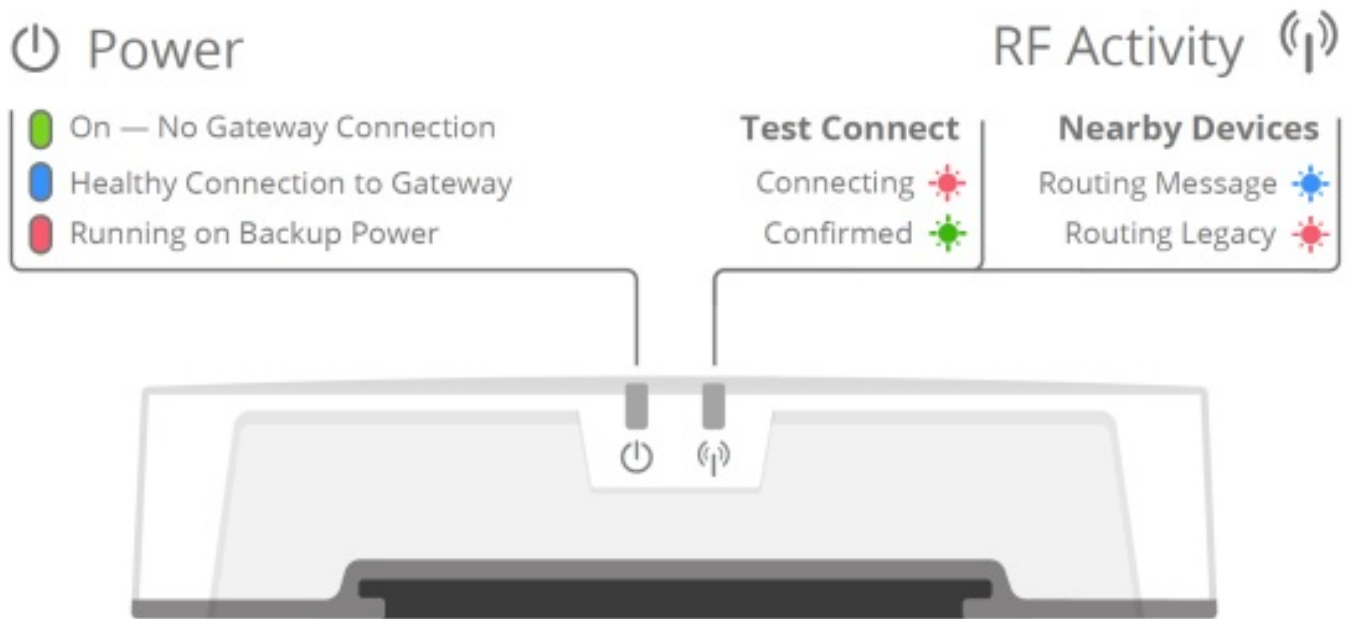
Programming Repeaters can be completed quickly on the NextCentury Web or Mobile App, either ahead of time or on-site. Simply scan the barcode found on the back of the Repeater.

Serial number location



Verification

LED Indicators



Note: After the Test Connect button is pressed, two slow blinks of the RF Activity LED show whether the Gateway can be reached. Fast blinks will occur at any time as signals are received from nearby NextCentury devices.

Mobile App Download



Additional Products

- Cellular Gateway
- Meter Transceiver
- Pre-Programming: Equipment configured and ready for install

For more, visit: www.nextcenturymeters.com or contact sales@nextcenturymeters.com

Documents / Resources

	<p>NextCentury RE4 Powerful Wireless Device [pdf] User Guide</p> <p>RE4, Powerful Wireless Device</p>
--	---

References

-  [NextCentury](#)

Manuals+.